

CAUTION

Cautions against hearing damage

Avoid continuous earphones-use at high volume. It may cause hearing loss.

Check the volume of the device to be connected before connecting the earphones.

Avoid using the wireless connection close to the micro wave, or other wireless devices which might effect quality of the wireless connection.

FOR YOUR SAFETY

In case the earphones irritate your skin, stop use immediately and visit a doctor.

NOTES ON USE

Refer also to the manuals supplied with the devices to be connected.

Do not use or disassemble the earphones in the case of a malfunction.

Clean the earphones with a soft dry cloth.

Do not expose the earphones to direct sunlight, dirt, heat or moisture.

ETIQUETTE

Do not use the earphones at excessively high volume in public. Noise leaks from the earphones.

WARRANTY POLICY

These earphones are covered by a limited warranty for one year from the date of purchase. In the unlikely event of failure due to defective materials or workmanship, VIE SHAIR will repair or replace them at no charge.

Please visit our website for full details.

Web: <http://vie.style/support/>

Information for Users on Collection and Disposal of Old Equipment

This symbol specified in the Directives 2002/96/EC indicates that used electrical and electronic products should not be mixed with general household waste.

For proper treatment to avoid harmful effect on human health and environment, please contact your local municipality, your waste disposal service or the point of sale where you purchased the items.

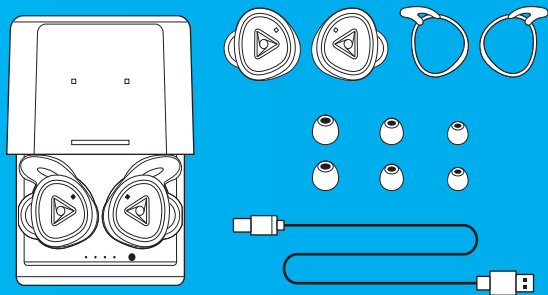


**VIE
FIT**

Feel the Life

「味わい深い人生を。」

1. CONTENTS (同梱物)



1. VIE FIT EARPHONE
2. CHARGING CASE
3. EAR TIPS (S/M/L)
4. EAR WINGS
5. USB Type-C CABLE

1. VIE FIT (イヤホン)
2. 充電ケース
3. イヤーチップ (S/M/L)
4. イヤーウィング
5. USB Type Cケーブル

6. Connectivity

When the Bluetooth connection is not stable, try the followings to improve your connectivity.

- 1: Shut down unnecessary app.
- 2: Restart your device to clear the working memory.
- 3: Turn off Wi-Fi of your device to reduce the radio influence.

7. Support and Warranty

These earphones are covered by a limited warranty for one year from the date of purchase. Please visit our website or contact by e-mail when you need support and the update information.

WEB: <http://vie.style/support/>

Mail: info@vie.style

6. 接続について

Bluetooth の接続が不安定な場合は下記の方法をお試しください。

- 1: お使いのデバイスで使用していないアプリを停止します。
- 2: 再起動しメモリーをクリアな状態にします。
- 3: お使いのデバイスで Wi Fi をオフにし電波の干渉を防ぎます。

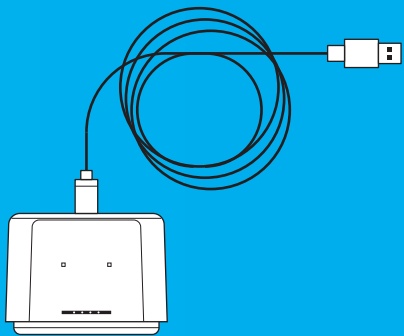
7. 保証・サポート

本製品には12ヶ月間の保証がついております。
修理・交換・サポート・更新情報などは、
下記アドレスにお問い合わせください。

WEB: <http://vie.style/support/>

Mail: info@vie.style

5. Charging (充電方法)



Earphones (イヤホン)

1. Automatically starts charging when stored into the case. (LED : Red)
2. Automatically stops charging when fully charged. (LED : Off)

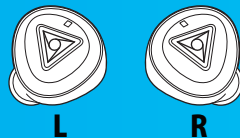
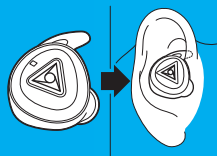
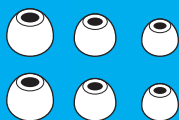
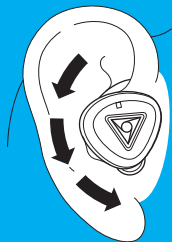
1. イヤホンをケースに戻すと自動的に充電を開始します。(LED : 赤点灯)
2. 満充電になると停止します。(LED : 消灯)

Charging Case (充電ケース)

1. Insert USB Type-C Cable to charge the charging case.
2. LED indicator of the case shows the battery remaining. (LED : Blue)

1. ケースを充電するには、USB Type C ケーブルを接続します。
2. ケースのLED インジケーターで充電残量が確認できます。(LED: 青点灯)

2. HOW TO WEAR (装着方法)



1. Confirm the side (L/R) and the angle .
2. Insert the earphones.
3. Turn and push them into ear canal.

上下左右を確認し、図のように、耳の奥に回すようにひねって挿入します。

Ear Tips (イヤーチップ)

Choose the size (S/M/L) to fit you most.
*If any of the ear tips are too big, Vie Fit can be used without ear tips.

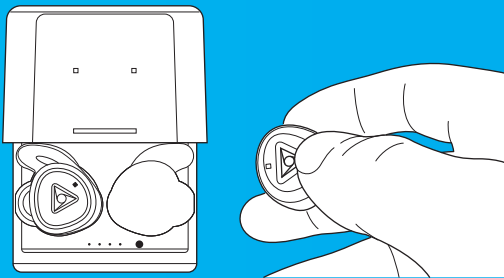
S・M・Lの三種類の中より、自分の耳に一番合ったものを選びます。*どのサイズも大きすぎる場合、イヤーチップなしでも、ご使用可能です。

Ear Wings (イヤーウィング)

If the earphones are loose, or when doing the sports, use the ear wings to extra-hold earphone.

イヤーウィングは、イヤホンが緩い場合や、激しいスポーツをする場合などに着用します。

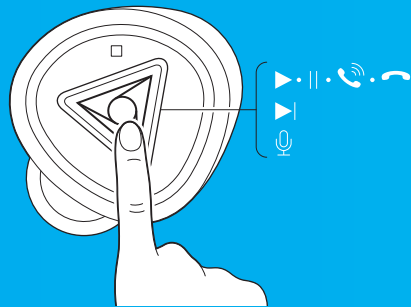
3. PAIRING (ペアリング)



1. Vie Fit will automatically turn on when taken from the charging case (LED : Blue Blink)
2. Push the button (either L or R) for 2 seconds to get into pairing mode. (LED : Blue/Red Blink)
3. Select "VIE FIT" on your device.
4. After paired, you hear the announce "Your device has been connected".
5. After the initial pairing, Vie Fit automatically connects to your device.
6. Each side can memorize the pairing of 1 device and switch each other. (Multipoint Function)

1. ケースより取り出すと、自動的に電源が入ります。(LED : 青点滅)
2. 左右どちらかのイヤホンを2秒長押しし、ペアリング・モードに入ります。(LED : 赤青点滅)
3. デバイスのBluetooth画面で「VIE FIT」を選択します。
4. 接続完了の音声案内が流れます。
5. 次回以降は、デバイスに自動的に接続されます。
6. 左右1台ずつ、2台の設定を保持でき、交互に接続を切り替えることが可能です。(マルチポイント機能)

4. Control (操作方法)



- | | |
|---------------------------------|----------------------------|
| 1 Push | Play / Stop |
| | Pick up / Hang up the call |
| 2 Push | Next Song |
| 3 Push | Call AI |
| Long Push (3sec) | Power On/Off |
| Long Push (2sec after Power on) | Pairing Mode |

- 1.1 プッシュ 音楽の再生・停止
電話の応答・終了
- 2.2 プッシュ 次の曲へ
- 3.3 プッシュ AI機能の呼び出し
- 4.長押し(3秒) 電源のオン・オフ
- 5.長押し(電源ON状態で2秒) ペアリングモード

FCC STATEMENT :

This device complies with Part 15 of the FCC Rules. Operation is subject to the following two conditions:

- (1) This device may not cause harmful interference, and
- (2) This device must accept any interference received, including interference that may cause undesired operation.

Warning: Changes or modifications not expressly approved by the party responsible for compliance could void the user's authority to operate the equipment.

NOTE: This equipment has been tested and found to comply with the limits for a Class B digital device, pursuant to Part 15 of the FCC Rules. These limits are designed to provide reasonable protection against harmful interference in a residential installation.

This equipment generates uses and can radiate radio frequency energy and, if not installed and used in accordance with the instructions, may cause harmful interference to radio communications. However, there is no guarantee that interference will not occur in a particular installation. If this equipment does cause harmful interference to radio or television reception, which can be determined by turning the equipment off and on, the user is encouraged to try to correct the interference by one or more of the following measures:

- Reorient or relocate the receiving antenna.

- Increase the separation between the equipment and receiver.

- Connect the equipment into an outlet on a circuit different from that to which the receiver is connected.

- Consult the dealer or an experienced radio/TV technician for help.

RF warning statement:

The device has been evaluated to meet general RF exposure requirement. The device can be used in portable exposure condition without restriction.