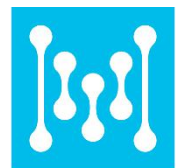




H6 Light Sensor Beacon

Smaller, Smarter, Stronger. The SLIM Bluetooth® H6 Light Sensor BEACON is the ideal beacon for the asset tracking and inventory of small equipment. Discreet and 100% autonomous, this beacon can be worn as a badge or necklace, but can also be glued to equipment thanks to a dedicated mounting sticker based on a high-performance adhesive stripe.

Further more, its high precision accelerometer sensor permits to detect most of asset movements and integrated light sensor can be help to monitor ambient light changes as well as anti-tamper purpose.



MOKO SMART

What are the benefits of H6?



IP65 Waterproof

Ultrasonic structure design with IP65 waterproof to guarantee the stability.



Independent SOS button

Mechanical SOS button available to trigger SOS alarm easier.



Extra thin

Discreet and slim structure design to fit for most installation and application scenarios.



Versatile Installation

Flexible deployment with double-sided adhesive tape , lanyard or necklace.



Wide temperature range

Rugged design with PC housing material to extend wider temperature range in $-20^{\circ}\text{C} \sim 60^{\circ}\text{C}$.



What are the features of H6?



Ambient light detection

Equipped with light sensor to detect ambient light changes, thus extending to smart IOT application scenarios.



Motion detection

3-axis accelerometer sensor makes it possible to detect movements and extend application scenarios.



LED alert notification

Provide alert notifications with red LED in low battery or other specific situations.



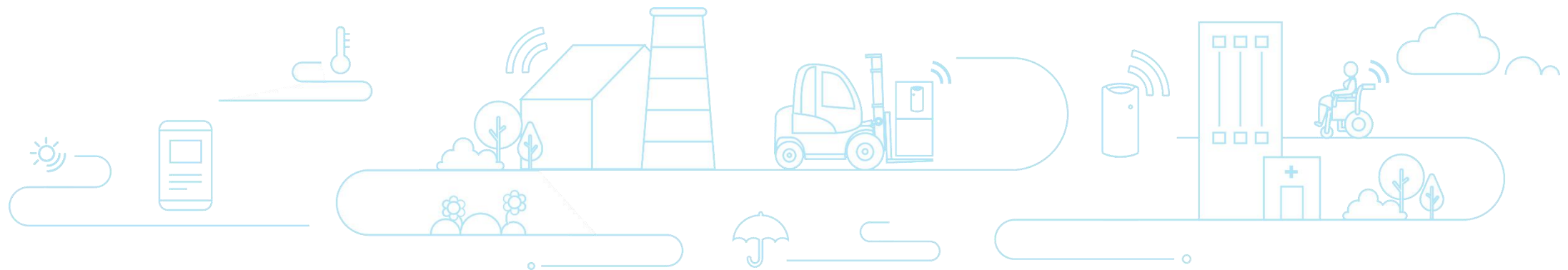
Anti-Tamper alarm

Alarm or broadcast specific advertisement to be a reminder when device removed or disassembled.



Intelligent battery management

Sense and switch intelligently between advertising mode and sleep mode through accelerometer sensor or light sensor, to reduce battery consumptions.



What are the applications of H6?



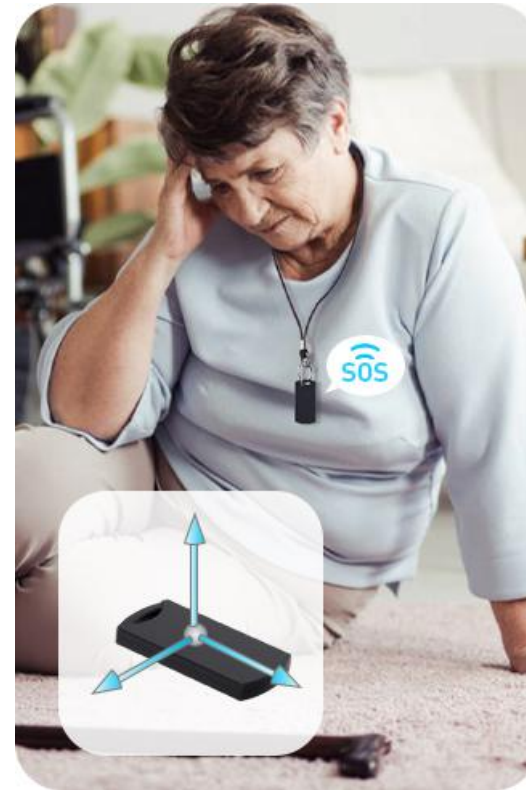
Hospital

- > Asset locating for effective distribution and maintenance.
- > Patient + Staff Locating
- > Nurse call Automation



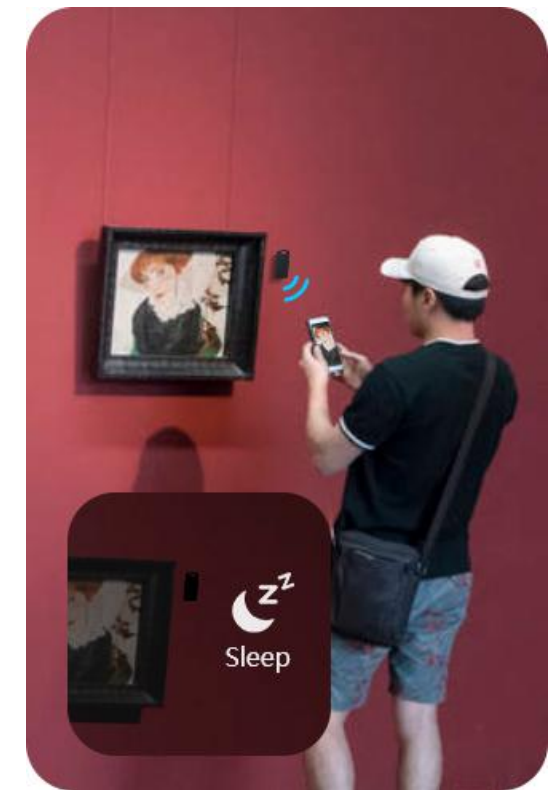
Logistics

- > Anti-Tamper alarm
- > Inventories accuracy improvements
- > Unpacking detection



Healthcare

- > Real-time fall detection
- > Patient tracking
- > SOS call automation



Exhibition center

- > Power saving mode
- > Exhibition items info pushing.
- > Anti-Tamper and asset tracking of valuable exhibits
- > Indoor navigation tag

Multiple Installation Styles



① Double-sided tape



② Lanyard



③ Key chain

Main Specifications

Dimensions

51.0mm x 24.5mm x 5.5mm

Built-in Sensor

Ambient light sensor
Accelerometer sensor

Advertising Range

Up to 150m
(Open area without obstacles)

Material

PC

Frame type

Eddystone - UID, URL, TLM
Apple - iBeacon
Customized - Accelerometer,
Device info

Chipset

Nordic nRF52 series

Battery

CR2032 Lithium coin cell battery
220mAh | Non-replaceable

Installation Styles

Sticker | Lanyard
Key chain

Color

Black

Certification

FCC, CE, RoHS, REACH



What customization services can we provide?



PCB re-layout design

Support customers in making hardware changes to accommodate mechanical design or functional requirements.



Firmware/APP customization

Assist customers in customizing the Firmware/APP to meet full compatibility of different end-users' requirements.



Logo/Packaging design

Offer customized packaging solution and logo design to meet customer's uniform requirements.



Product ID customization

We can set the Product ID according to customers' requirements to fit for different scenarios use.



Firmware verification

Offer professional engineer team to test and verify the functionality of customer's developed Firmware.



Pre-configuration service

Support customers to pre-configure required parameters in Beacon during mass production.

This device complies with part 15 of the FCC Rules. Operation is subject to the following two conditions: (1) This device may not cause harmful interference, and (2) this device must accept any interference received, including interference that may cause undesired operation.

Any changes or modifications not expressly approved by the party responsible for compliance could void the user's authority to operate the equipment.

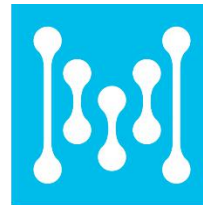
NOTE: This equipment has been tested and found to comply with the limits for a Class B digital device, pursuant to Part 15 of the FCC Rules. These limits are designed to provide reasonable protection against harmful interference in a residential installation. This equipment generates, uses and can radiate radio frequency energy and, if not installed and used in accordance with the instructions, may cause harmful interference to radio communications. However, there is no guarantee that interference will not occur in a particular installation.

If this equipment does cause harmful interference to radio or television reception, which can be determined by turning the equipment off and on, the user is encouraged to try to correct the interference by one or more of the following measures:

- Reorient or relocate the receiving antenna.
- Increase the separation between the equipment and receiver.
- Connect the equipment into an outlet on a circuit different from that to which the receiver is connected.
- Consult the dealer or an experienced radio/TV technician for help.

The device has been evaluated to meet general RF exposure requirement. The device can be used in portable exposure condition without restriction.

FCC ID: 2A094-H6



MOKO SMART

MOKO TECHNOLOGY LTD.

Address: 4F, Buidling 2, Guanghui Technology Park, MinQing Rd, Longhua,
Shenzhen, Guangdong, China

E-mail: Support_BLE@mokotechnology.com

Website: www.mokosmart.com

www.mokoblue.com