

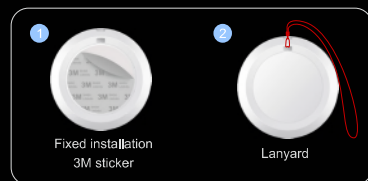


Safety in a Click

B3 Emergency Button

Introducing the B3 Emergency Button, a cutting-edge device powered by Bluetooth Low Energy technology. Featuring a prominent and easily accessible button with support for trigger functions, this device is equipped with a circular LED effect to provide noticeable user reminders. Primarily designed as a panic button, the B3 finds extensive applications in diverse settings, including elderly care, educational institutions, and vehicle scenarios. Experience enhanced safety and rapid response capabilities with the B3 Emergency Button.

Multiple Wearing Methods



Equipped with a circular LED effect for noticeable user reminders



Key point



Easy-to-Press
big button



Replaceable
battery



Programmable
button



Circular LED
effect

Applications



Vehicle

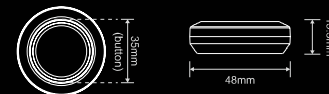


School

General specs

Connectivity:	BLE 5.0
Dimensions:	Φ48.0*15.3mm (Body)
	Φ35mm (Button)
Weight:	20g
Color:	White
LED:	Circular LED - Red/Green/Blue
Material:	PC
Battery capacity:	600mAh replaceable battery
Battery lifespan:	3 years in default settings
Operating temperature:	-20°C to 60°C

Transmission range:	150m (in open area without obstacles)
Installation:	3M Sticker, Lanyard
Certification:	FCC CE RoHS REACH



FCC STATEMENT

1. This device complies with Part 15 of the FCC Rules. Operation is subject to the following two conditions:

- (1) This device may not cause harmful interference.
- (2) This device must accept any interference received, including interference that may cause undesired operation.

2. Changes or modifications not expressly approved by the party responsible for compliance could void the user's authority to operate the equipment.

NOTE: This equipment has been tested and found to comply with the limits for a Class B digital device, pursuant to Part 15 of the FCC Rules. These limits are designed to provide reasonable protection against harmful interference in a residential installation.

This equipment generates uses and can radiate radio frequency energy and, if not installed and used in accordance with the instructions, may cause harmful interference to radio communications. However, there is no guarantee that interference will not occur in a particular installation. If this equipment does cause harmful interference to radio or television reception, which can be determined by turning the equipment off and on, the user is encouraged to try to correct the interference by one or more of the following measures:

- Reorient or relocate the receiving antenna.
- Increase the separation between the equipment and receiver.
- Connect the equipment into an outlet on a circuit different from that to which the receiver is connected.
- Consult the dealer or an experienced radio/TV technician for help.

RF warning statement:

The device has been evaluated to meet general RF exposure requirement. The device can be used in portable exposure condition without restriction.

*Default settings: Adv interval = 1000ms, Standby duration = 400ms, without accelerometer sensor