

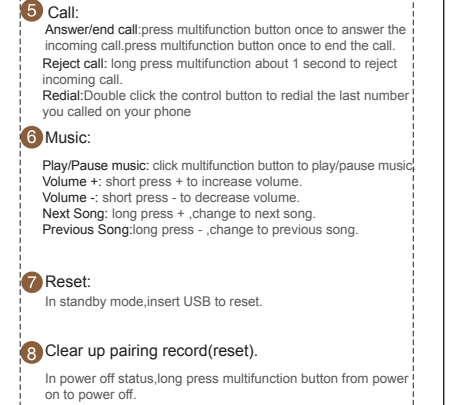
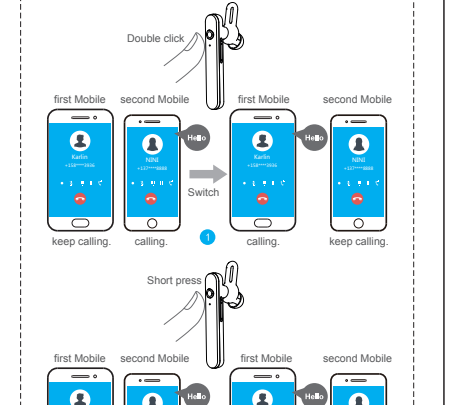
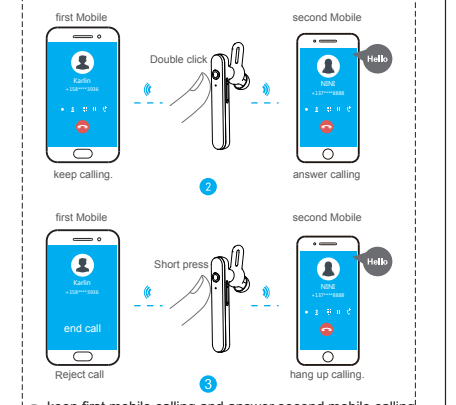
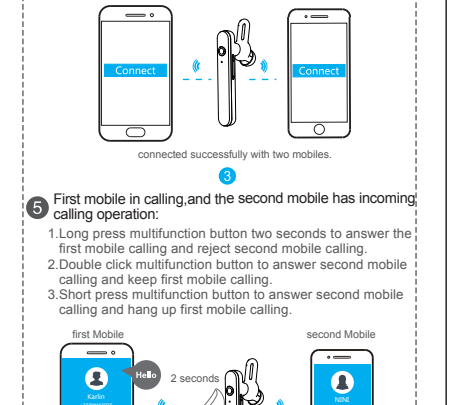
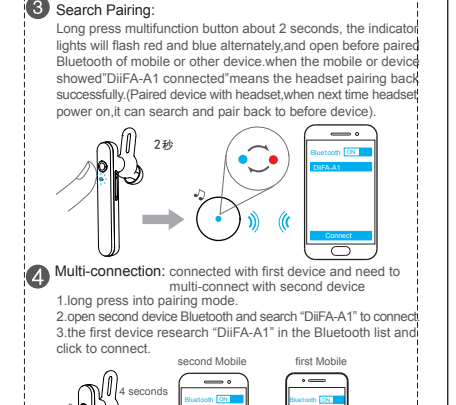
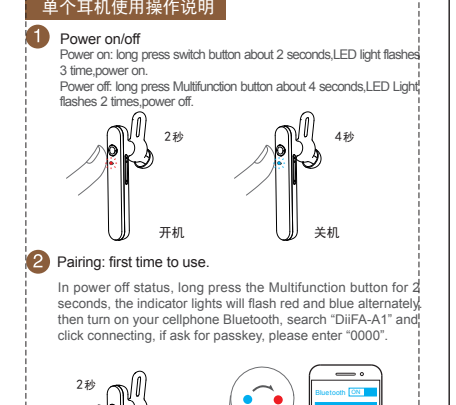
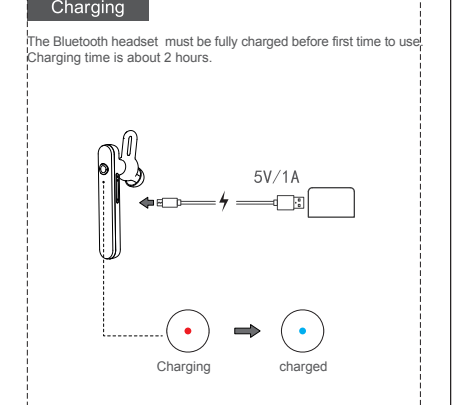
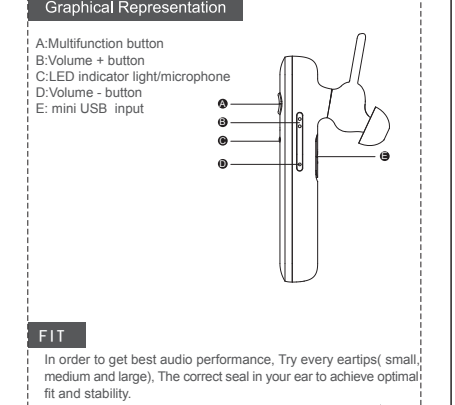
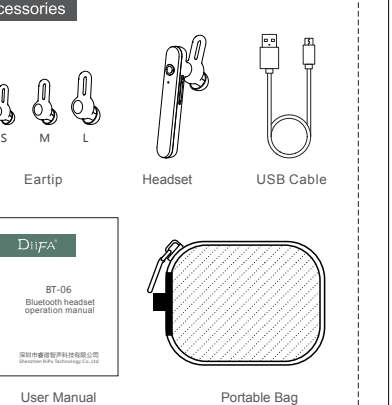
DiiFA

BT-06, BT-06M
Mono Bluetooth Earphone
operation manual

Shenzhen DiiFA Electronics Co., Ltd.

Congratulations, and thank you for choosing BT-06 Bluetooth Headset.
This manual will help you operate the Headset, but you should first familiarize yourself with the Bluetooth functionality of your mobile phone or other devices before using the Headset. To enjoy your time with our product.

- Safety rules:**
- Please follow the rules described in this manual closely to ensure your safety. Before using this Stereo Headset, we would strongly encourage you to read through this user manual.
 - Be more wary of any edges, uneven surfaces, metal parts accessories and its packaging so as to prevent any possible injury or damage.
 - Do not modify, repair or dismantle this Bluetooth Stereo Headset. Doing so may result in fires, electric shocks, complete breakdown of this Sport Bluetooth Stereo Headset, etc. All of which are not covered under warranty.
 - Do not use any diluents or volatile liquid to clean the sport Bluetooth stereo headset.
 - Do not use the sport bluetooth stereo headset in a hazardous location.



Specifications

Items	Specifications
Bluetooth Version	V4.1+EDR
Range	10m
Frequency response	50HZ-5KHZ.
Sensitivity	160dB
Impedance	32Ω
Maximum input	3mW
Output Voltage	5V
recharging current	70mA
Charging time	2 hours
Audio transmission protocols	A2DP/HFP/HSP/AVRCP
Product Certificate	FCC/CE/ROHS/BQB

Notice

- The mobile can not find the headset if the BT-06 is not paired. Please ensure the headset is in pairing model before you search it. (red and blue lights flashing alternately)
- If the headset can not find any pairing device for five minutes, it will power off automatically.

Warm tips

You must select a qualified adapter to charge this product. You must charge the bluetooth headset if it has not been used for more than 3 months.

Warning

- Do not put the product at the environment of too low or too high temperature for a long time, that may cause deformation, reduce the battery capacity, even shorten service lifetime.
- Do not use the device when the thunderstorm coming, may cause a failure, and increase the risk of struck by lightning.
- Do not remove or modified headset for any reason, otherwise may lead to headset fault or burned, please send headset to authorized service center for repairs.
- Place the device and all accessories out of the reach of children and pets, small parts may be swallowed cause suffocation and serious consequences.
- Do not put the headset into the water.

Troubleshooting

Phenomenon	Reason	Solution
Starting-up failure	low battery	charge for the headset
No sound after paired	wrong paired	re-pairing
Red light shines during phone talking	low battery warning	please charge immediately
No indicator during charging	Headset didn't put into the charging cable well	check the headset if it's well put into
Shut down automatically	low battery	charge for the headset
Echo	volume is too high or environment is too noisy	adjust volume or change environment
Noise during phone calls	environment disturbance or headphone is too far away from device	change environment or shorten the distance between headphone and device
Low volume of the caller	wrong wear of headphone	adjust headphone position
Signal is not well, interrupting	environment disturbance or headphone is too far away from device	far away from the interference signal or shorten the distance between headphone and device

Warranty and support

For more products and supports, please visit our company website: www.diifa-tech.com

FCC Caution.

This device complies with part 15 of the FCC Rules. Operation is subject to the following two conditions:

- (1) This device may not cause harmful interference, and
- (2) this device must accept any interference received, including interference that may cause undesired operation.

Any Changes or modifications not expressly approved by the party responsible for compliance could void the user's authority to operate the equipment.

Note: This equipment has been tested and found to comply with the limits for a Class B digital device, pursuant to part 15 of the FCC Rules. These limits are designed to provide reasonable protection against harmful interference in a residential installation. This equipment generates uses and can radiate radio frequency energy and, if not installed and used in accordance with the instructions, may cause harmful interference to radio communications. However, there is no guarantee that interference will not occur in a particular installation. If this equipment does cause harmful interference to radio or television reception, which can be determined by turning the equipment off and on, the user is encouraged to try to correct the interference by one or more of the following measures:

- Reorient or relocate the receiving antenna.
- Increase the separation between the equipment and receiver.
- Connect the equipment into an outlet on a circuit different from that to which the receiver is connected.
- Consult the dealer or an experienced radio/TV technician for help.

The device has been evaluated to meet general RF exposure requirement. The device can be used in portable exposure condition without restriction.