

# netvue

Feel free to contact us for additional help:



support@netvue.com



1(866)749-0567



Chat with us through App



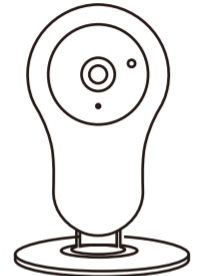
@NetvueTech

www.netvue.com

240 W Whittier Blvd Ste A, La Habra, CA 90631

© 2010-2018 Netvue Technologies Co., Ltd. All Rights Reserved.

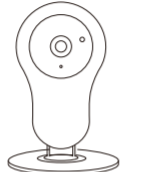
Version 1.8



netvue  
Home Cam

## Quick Start Guide

### packing list



Home Cam  
\*1



Quick start Guide  
\*1



Power Adapter  
\*1

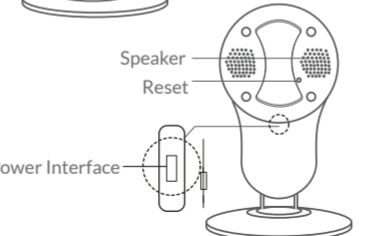
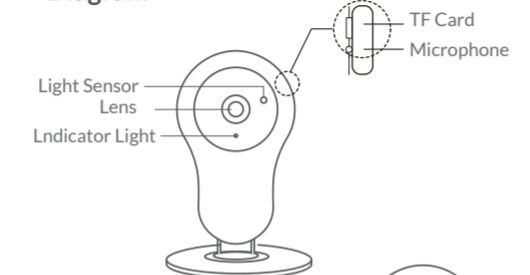


Screw Accessories  
\*1



Location label  
\*1

### Diagram



### App set-up



Scan QR code to download netvue app

### Connect device

1. Connect with matched adapter (DC 5V ,1A ).
2. Depending on the status of the indicator light, check the camera status.

#### LED Indicator Status

##### Red:

When power is on, the indicator light is red.

##### Blue:

- A. Flash slowly: Connecting server.
- B. Solid green: Connected server.
- C. Flash rapidly: WiFi configuration mode.



### Sign in and add device

1. Open the APP, register an account and log in.



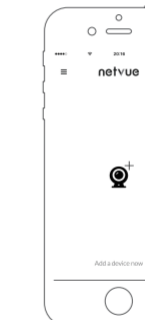
Open the app



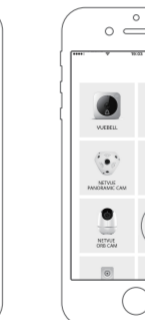
Register account



Add device



Choose Netvue Home Cam



Connect power



Enter password

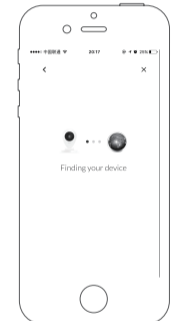
2. After logging in, click “+” sign, and choose Netvue Home Cam.

3. Configure WiFi step by step.



Scan QR code

4. Device added successfully. Return to app home page, your device should appear in the list of devices.

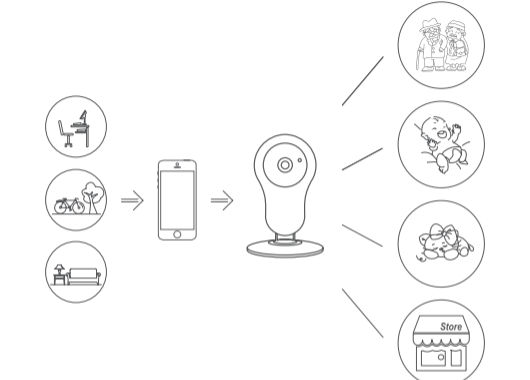


Device added



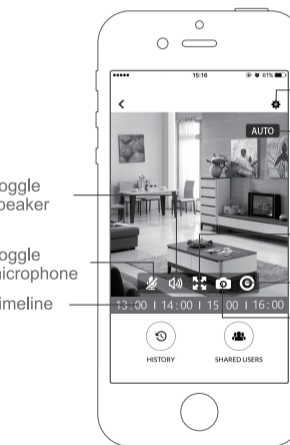
Device list

1. Use a valid email address to register your account.
2. Keep the device in a 2.4G WiFi environment with good signal.
3. After connecting to power, the device will make a "Di" sound for 3 seconds. Afterwards press the reset button, the indicator light will then flash rapidly.
4. Strong lights may interfere with the ability for the device to read the QR code.
5. After connecting to the router, the device will make a "ding dong" sound effect. After connecting to the server successfully, it will play a cheerful chime; if it fails, it will play a sad sound effect.
6. If the server fails to connect, you may scan the device ID to connect the device.



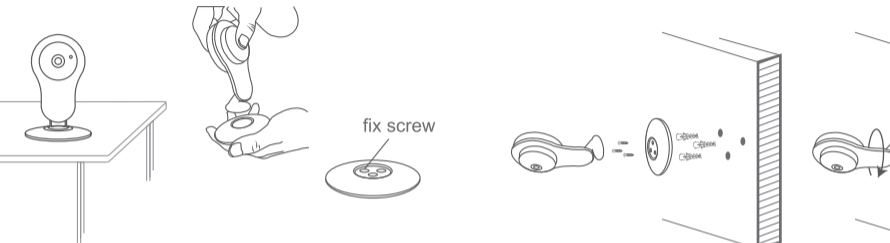
4. Congratulations !You have completed installtion of your camera, you can watch your home anywhere and anytime.

### How to use



- Toggle speaker
- Toggle microphone
- Timeline
- Settings
- Resolution adjustment (Auto) (SD) (HD)
- Full screen/ Vertical screen
- Record video
- Take a screenshot

### Caution



1. The device should be kept in open areas away from metal, avoid placing behind furniture or near microwaves. Keep away from areas with lots of cables if possible. Try to keep your device within range of your WiFi signal. For best results, keep as close to the source of WiFi as possible
2. When moving your device to anew place with a different WiFi, reconfigure your WiFi settings following the instructions on the app.

### Warning

This equipment has been tested and found to comply with the limits for a Class B digital device, pursuant to Part 15 of the FCC Rules. These limits are designed to provide reasonable protection against harmful interference when the equipment is operated in a commercial environment. This equipment generates uses and can radiate radio frequency energy and, if not installed and used in accordance with the instructions, may cause harmful interference to radio communications.

The antennas used for this transmitter must be installed to provide a separation distance of at least 20 cm from all persons and must not be co-located for operating in conjunction with any other antenna or transmitter.

FCC (USA) 15.9 prohibition against eavesdropping except for the operations of law enforcement officers conducted under lawful authority, no person shall use, either directly or indirectly, a device operated pursuant to the provision of this part for the purpose of overhearing or recording the private conversations of other unless such use is authorized by all of the parties engaging in the conversation.

### CE RED

This product can be used across EU member states. Feel free to contact us for additional help: