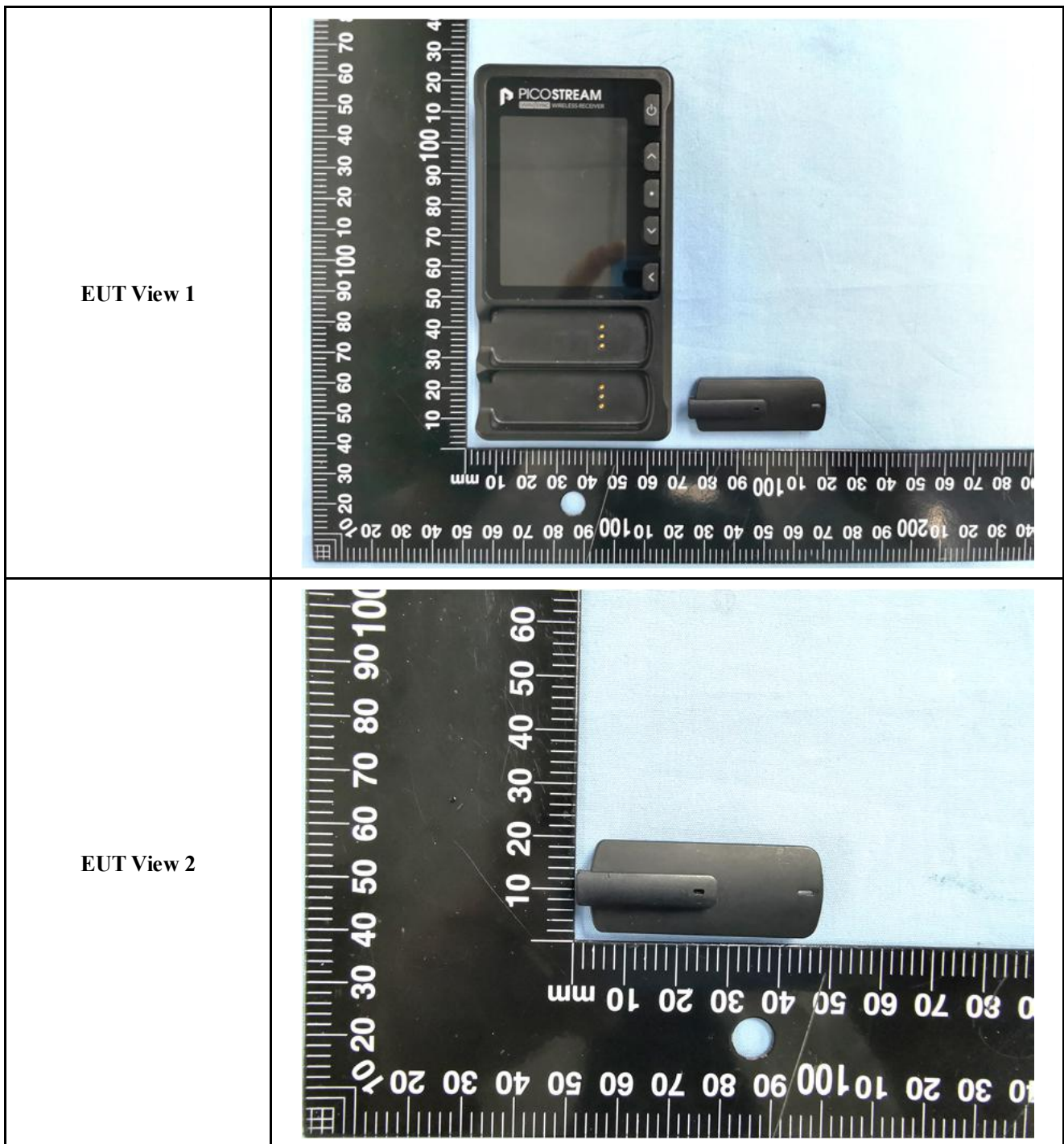
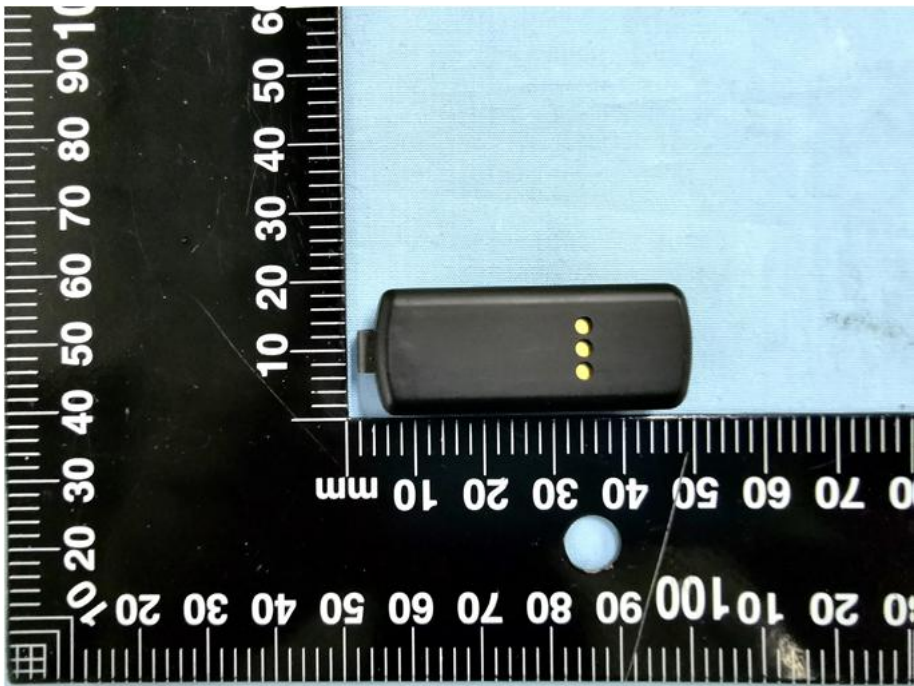

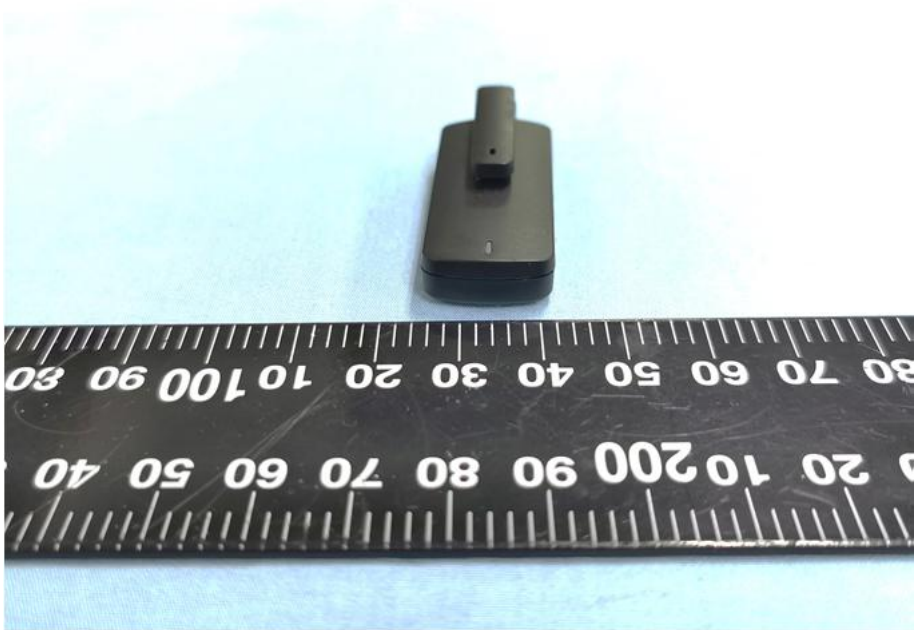



EXHIBIT 2 - EUT EXTERNAL PHOTOGRAPHS



| | |
|--------------------------|--|
| <p>EUT View 3</p> |  A black rectangular device is shown from a top-down perspective. It has three gold-colored pins protruding from its top surface. The device is placed on a light blue background next to a black millimeter ruler. The ruler shows markings from 0 to 100 mm, with the device spanning approximately from the 45 mm mark to the 65 mm mark. |
| <p>EUT View 4</p> |  A side view of the black rectangular device is shown. It has a slightly raised top edge with a small notch. The device is placed on a light blue background above a black millimeter ruler. The ruler shows markings from 0 to 100 mm, with the device spanning approximately from the 45 mm mark to the 65 mm mark. |

| | |
|--------------------------|---|
| <p>EUT View 5</p> |  A photograph showing a small, black, rectangular component with a small protrusion on top. The component is positioned above a black ruler with white markings. The ruler shows measurements in millimeters and centimeters, with the component's length appearing to be approximately 10-12 mm. |
| <p>EUT View 6</p> |  A photograph showing the same black component from a different perspective, highlighting its thickness and the protrusion. It is placed above a black ruler with white markings. The component's thickness is approximately 2-3 mm, and the protrusion is about 5 mm long. |

