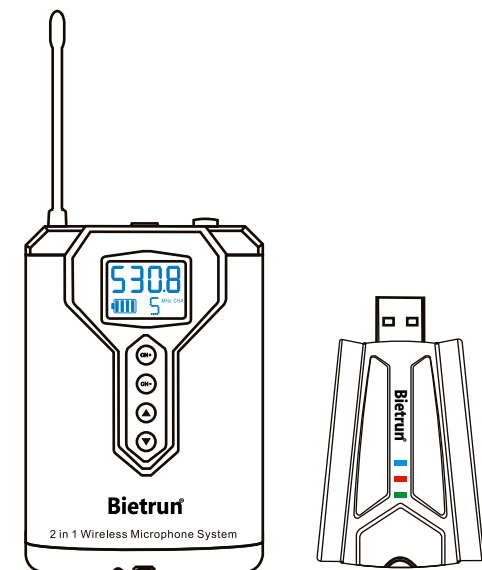


名称	Bietrun 腰包无线麦USB款 WXM024 说明书
尺寸	宽85mm* 高115mm
材质	折页 157g铜版纸

## Bietrun® Bietrun USB Wireless Microphone System WXM24 User Manual



If you have any questions, please feel free to contact us.  
E-mail: amazon@bietrun.com

### Product introduction:

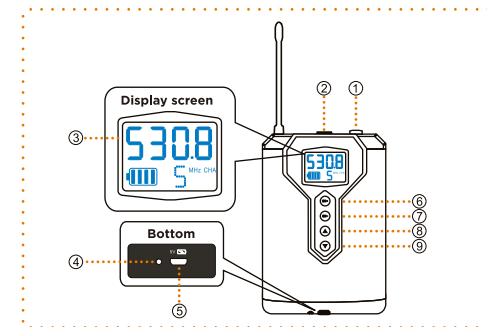
This wireless microphone adopts UHF frequency band for transmission, which has the characteristics of long transmission distance, strong anti-interference ability, low delay, clear sound quality. Easy to operate and debug. The product designed with extremely low power consumption and long battery life, which can be widely used in teaching, conferences, stage performances and other occasions.

### Product Features

1. UHF wireless transmission, get rid of the trouble of cable entanglement, good anti-interference performance, and clear signal sound quality
2. One-key power on/off, channel and volume control, simple operation;
3. The working status is displayed on the LED screen, which is clear at a glance;
4. A variety of microphones meet different use occasions;

### Product Description

#### Transmitter

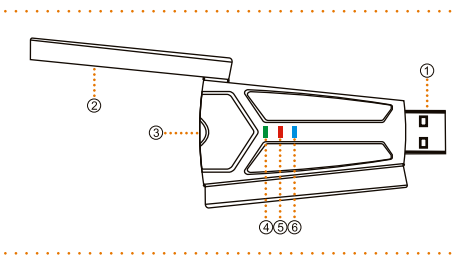


-1-

Serial NO.	Part Name	Function Description	Notes
1	Mic input port	can be connected to a lavalier microphone /a headset microphone to pick up sound signals	When unable to power on, please charge this product
2	Power button	Power on/off: Long press for 1 second and release to turn on/off the transmitter.	If the keys are locked, Changan can shut down for 1 second
3	Display screen	Microphone working status, including power, volume, frequency information	when  changes to  and blinks, it needs to charge
4	Charging indicator	charging indicator light is red in the charging state, and it lights up green when fully charged.	
5	Charging port	Connect an external DC 5V power supply to charge the transmitter.	(1) Please charge when the transmitter cannot be turned on. (2) When it's not used for a long time, make sure that it's charged at least once a month to ensure battery activity
6	Frequency switch button	(1) Press the key to increase the current channel, press the key to decrease the current volume (2) When there is interference in the same frequency band with other equipment or large environmental interference, you can press this button to change and adjust the transmitter frequency. There are 15 channels in total. (3) When adjusting the frequency, the blue indicator light of the receiver will flicker. After the frequency is matched, the blue light will be on again.	no need to adjust frequency under normal circumstances
7	Volume + / Volume -	(2)(1)  Press the key to increase the current volume (3)(1)  Press the key to decrease the current volume	The maximum volume of this machine is level 5, and the lowest level is level 1.

-2-

### Receiver

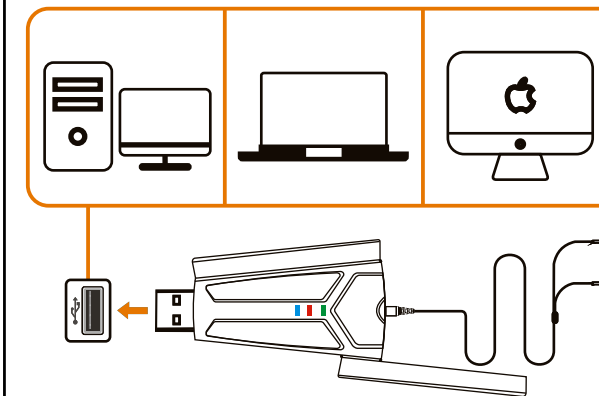


serial no	Part Name	Function Description	Notes
1	USB plug	Can be plugged into the computer's USB expansion port for use	When connecting to the computer for the first time, the device will automatically detect the driver and install it. You can use it only when prompted that the installation is successful
2	Receiver antenna	The receiver antenna needs to be unfolded when in use	<b>Unfolding will affect the receiving distance of the receiver</b>
3	Receiver 3.5mm output port	Plug into the AUX input port of the amplifier device through the cable	1. When using an adapter cable to plug the receiver into a 3.5mm pickup port, you need to supply power to the receiver first. <b>2. Not applicable to MIC port</b>
4	Audio pickup indicator	Green light on: Steady light means the transmitter is picking up sound	Flashing or not lighting means that the receiver has no external sound pickup
5	Power Indicator	Red light on: steady on when the receiver is in working condition	If this light is off, it means that the receiver is not working and needs to be connected to the power supply
6	Power Indicator	Blue light on: Steady light means that the transmitter and receiver are successfully connected	This light flashes to indicate that the connection signal is unstable. Please shorten the distance between the transmitter and the receiver to reduce space obstacles

-3-

### How to Use

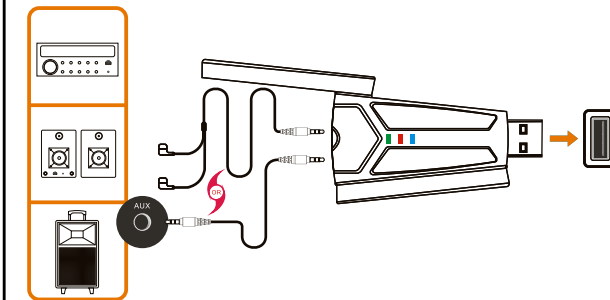
1. Computer USB power supply (digital output into the system, and can output analog signals for monitoring at the same time);



### Note:

- (1) Stable computer USB input port
  - (2) Support Windows 7, 8, 10 64-bit operating system
  - (3) Support Apple Mac, OS X operating system
  - (4) Support some third-party platform recording software and broadcasting software (some software may need to pay some fees)
  - (5) After normal connection, you need to select **Bietrun 04** as the microphone device or sound output device in the computer
2. External USB power supply-power bank, lever audio, USB port-powered equipment (analog output to speakers or monitor)

-4-



### Note:

- (2) Since the receiver is powered by USB and does not have a built-in battery, you must charge the receiver first before using it, and you can choose a device with a USB hole or a portable power bank to power the receiver.
- (2) Due to the design of the loudspeaker equipment, some loudspeaker equipment does not have a USB port, which makes it impossible to provide power to the receiver. This is not caused by this product. You can use a mobile power supply or other USB port power supply.

-5-

### Troubleshooting

Serial NO.	Breakdown	Elimination
1	The receiver cannot be turned on	Check the USB power supply
2	The transmitter cannot be turned on	Charge for 4H or more before powering on
3	Transmitter does not charge	1. Check whether the power adapter is powered on 2. Check whether the cable and the charging plug of the machine are inserted in place
4	The microphone sound is intermittent, and the receiver's green light flashes	(1) Shorten the distance between the receiver and the transmitter. (2) Adjust the receiver to the visible range as much as possible. (3) Try to switch channels.
5	No sound from MIC	(1) Check whether the receiver and transmitter have been properly connected, and whether the transmitter has been turned on normally. (2) Whether the external microphone is connected in place (3) Whether the receiver is correctly connected to the PA equipment. (4) Whether the loudspeaker equipment is turned on and whether the volume control is appropriate.
6	Low sound from Mic	Adjust the transmitter volume. Shorten the distance between the MIC and the mouth
7	The sound of the amplifying equipment is too small	(1) Adjust the volume of the loudspeaker equipment. (2) Adjust the microphone volume. (3) Adjust the direction and distance between the microphone and the mouth
8	Signal interference	(1) Adjust the receiver to the visible range as much as possible. (2) Try to switch channels.

-6-

### Product Parameters

Wireless frequency band	U Band	Microphone type	Electret condenser microphone	
Audio signal	Digital sampling 48KHz	Pairing method	Factory connected and paired	
Frequency response	20Hz-18KHz	Power supply	Receiver	USB powered
Working time	Around 8 Hours		Transmitter	Lithium polymer battery
Wireless distance	Classroom environment 30M			

### Package List

- 1X Lavalier Microphone
- 1X Headset Microphone
- 1X Receiver
- 1X 3.5mm Audio Cable
- 1x USB Adapter Cable
- 1X Charging Cable
- 1X User Manual

### Manufacturer:

SHENZHEN LONGXIANG INTELLIGENT TECHNOLOGY CO, LTD.  
Address: FLOOR 4, BUILDING D, FUXINLIN INDUSTRIAL AREA, HANGCHENG INDUSTRIAL ZONE FUHUA COMMUNITY XIXIANG STREET, BAOAN DISTRICT SHENZHEN GUANGDONG CHINA

-7-

#### FCC Statement

This equipment has been tested and found to comply with the limits for a Class B digital device, pursuant to part 15 of the FCC Rules. These limits are designed to provide reasonable protection against harmful interference in a residential installation. This equipment generates, uses and can radiate radio frequency energy and, if not installed and used in accordance with the instructions, may cause harmful interference to radio communications. However, there is no guarantee that interference will not occur in a particular installation. If this equipment does cause harmful interference to radio or television reception, which can be determined by turning the equipment off and on, the user is encouraged to try to correct the interference by one or more of the following measures:

- Reorient or relocate the receiving antenna.
- Increase the separation between the equipment and receiver.
- Connect the equipment into an outlet on a circuit different from that to which the receiver is connected.
- Consult the dealer or an experienced radio/TV technician for help.

Caution: Any changes or modifications to this device not explicitly approved by manufacturer could void your authority to operate this equipment.

This device complies with part 15 of the FCC Rules. Operation is subject to the following two conditions: (1) This device may not cause harmful interference, and (2) this device must accept any interference received, including interference that may cause undesired operation.

#### RF Exposure Information

The device has been evaluated to meet general RF exposure requirement. The device can be used in portable exposure condition without restriction.

#### Specific Absorption Rate (SAR) information:

This SHENZHEN JINGDU TECHNOLOGY CO.,LTD meets the government's requirements for exposure to radio waves. The guidelines are based on standards that were developed by independent scientific organizations through periodic and thorough evaluation of scientific studies. The standards include a substantial safety margin designed to assure the safety of all persons regardless of age or health. FCC RF Exposure Information and Statement the SAR limit of USA (FCC) is 1.6 W/kg averaged over one gram of tissue. Device types: SHENZHEN JINGDU TECHNOLOGY CO.,LTD has also been tested against this SAR limit. This device was tested for typical body-worn operations with the back of the Wireless USB Microphone kept 0mm from the body. To maintain compliance with FCC RF exposure requirements, use accessories that maintain an 0mm separation distance between the user's body and the back of the Wireless USB Microphone. The use of belt clips, holsters and similar accessories should not contain metallic components in its assembly. The use of accessories that do not satisfy these requirements may not comply with FCC RF exposure requirements, and should be avoided.