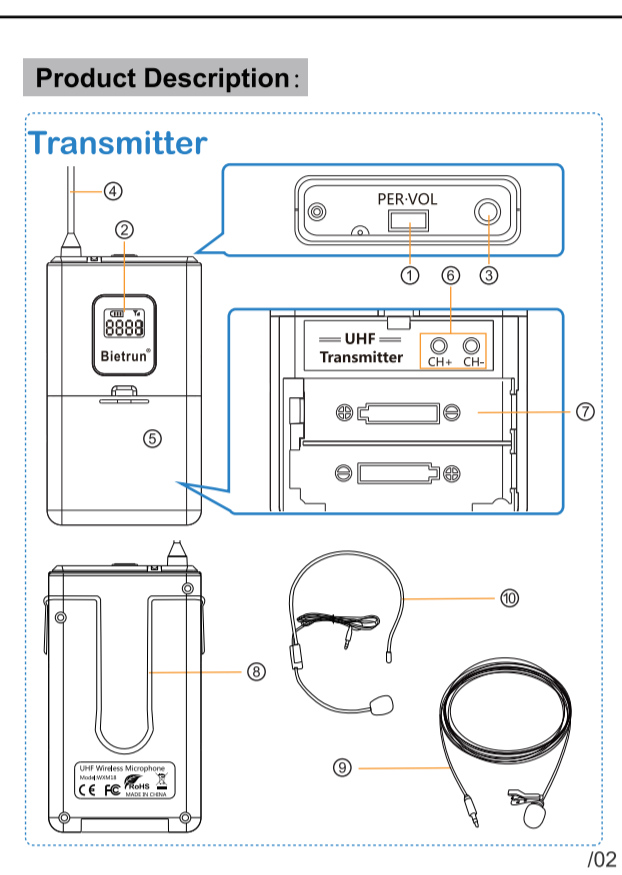


Product Introduction:
This wireless microphone adopts UHF frequency band transmission, which has the characteristics of long transmission distance, strong anti-interference ability, low delay and crystal clear sound quality. Easy to use, operate and debug. The whole machine has extremely low power consumption and long battery life, and can be widely used in teaching, conferences, stage performances and other occasions.

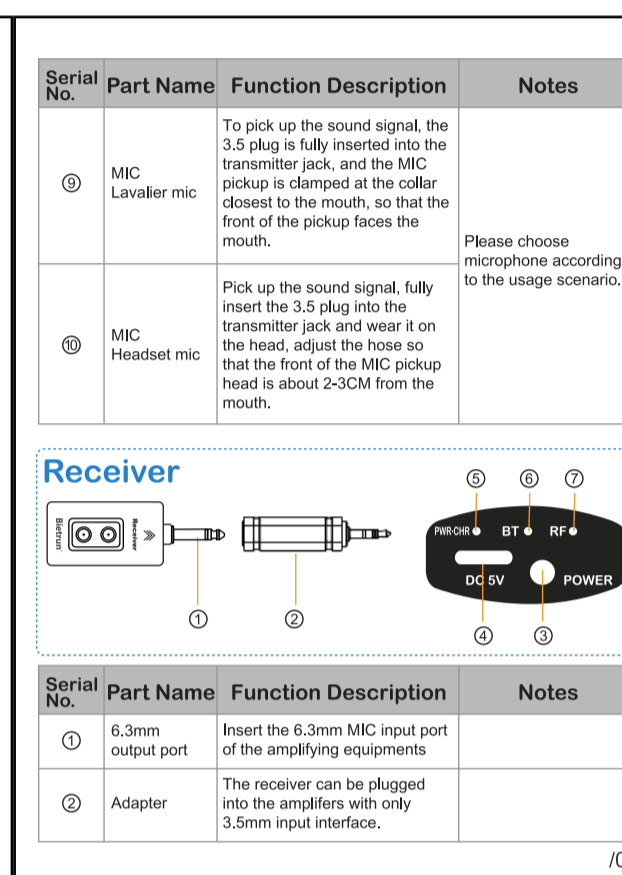
Notes:
Please read and follow all warnings carefully before use, and keep this manual for subsequent use.

Product Feature:
1. UHF frequency band wireless transmission, get rid of the trouble of cable entanglement, good anti-interference performance, clear signal sound quality.
2. One-key startup, shutdown, and volume control, simple operation.
3. LED screen display, clear at a glance.
4. A variety of microphones meet different use occasions.
5. With Bluetooth receiving function, it is more widely used.



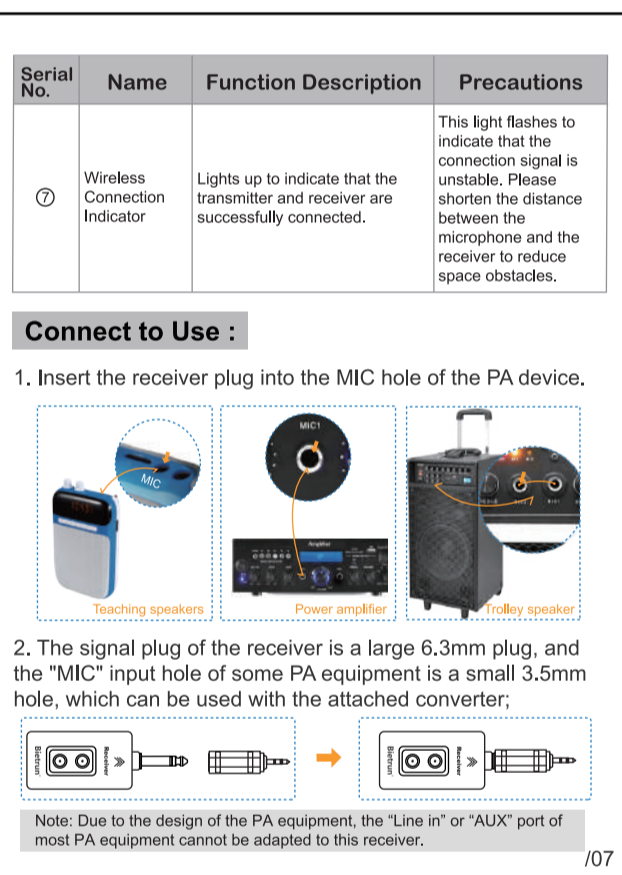
Serial No.	Part Name	Function Description	Notes
①	Power button	Turn on/off the power. Short press to adjust the volume in the power-on state, a total of 12 levels, the smallest is the fifth level, each press increases the volume by one level, and 4 cycles between 5-12.	
②	Display screen	1. The working status of the microphone, including power, signal, and channel. 2. After power on, if there is no key operation, it will enter the power saving mode and only display the power information. Press any key to reactivate the display.	When the channel changes to C and flashes, you need to replace the new battery, otherwise it will automatically shut down.
③	Mic jack	External microphone jack	It is recommended to use the standard microphone of this product.
④	Transmission antenna	The microphone signal is sent to the receiver through this antenna	Do not bend the antenna excessively, so as not to affect the distance and sound effect.
⑤	Battery compartment	Opening, the battery can be removed and the channel can be switched.	

Serial No.	Part Name	Function Description	Notes
①	Frequency switch	1. When there is interference in the same frequency band with other equipment or large environmental interference, you can press CH+ or CH- to switch channels, there are 15 channels in total. 2. When the channel is switched, the receiver microphone indicator will flash, and after repeating the frequency, it will be on again.	No need to adjust frequency under normal circumstances
②	Battery holder	Correctly install two AA 1.5V batteries of the same brand according to the polarity mark	1. The old and new batteries cannot be mixed. 2. It is recommended to use AA alkaline batteries. 3. It is not recommended to use rechargeable batteries (the low voltage of 1.2V affects the working time of the product).
③	Securing die	Can be inserted into the waist and fixed on the belt, pocket or bracket.	



正面

Serial No.	Name	Function Description	Precautions
①	Power Button	Long press 2S to turn on/off the receiver. When turned on, short press to turn off or turn on the Bluetooth function, the BT light will be blue when turned on.	Bluetooth is turned on by default every time you turn it on.
②	Charging port	External DC 5V power supply to charge the receiver	1. Please charge when the receiver cannot be turned on. 2. When it is not used for a long time, ensure that it is charged at least once a month to ensure battery activity.
③	PWR-ON	1. White: The receiver is turned on fully charged. 2. Red light: low battery-flashing, while charging/light on, when fully charged-white light on.	
④	BT Bluetooth Indicator	1. Blinking: Bluetooth is turned on and is waiting to be connected. 2. Steady on: Bluetooth device is connected. Off: Bluetooth is off.	Bluetooth is turned on by default every time you turn it on. Short press the power button to turn off and turn on the Bluetooth function.



Serial No.	Breakdown	How to fix
1	The receiver cannot be turned on	Charge first
2	The transmitter cannot be turned on	Check whether the battery installation direction is correct. Replace with new battery (1.2V rechargeable battery is not recommended).
3	The microphone sound is intermittent and the receiver green light flashes	Shorten the distance between the receiver and the microphone. Adjust the receiver to the visible range as much as possible. Can switch channels.
4	Bluetooth sound is intermittent	Shorten the distance between the Bluetooth device and the receiver
5	No sound from MIC	Check whether the receiver and microphone are properly connected, and whether the microphone is turned on normally. Whether the receiver is correctly connected to the PA equipment. Whether the PA equipment is turned on and whether the volume control is appropriate.
6	MIC low sound	Adjust the transmitter volume. Close the distance between the MIC and the mouth.
7	The sound of amplifying equipment is too small	Adjust the volume of the loudspeaker equipment. Adjust the microphone volume. Adjust the direction and distance between the microphone and the mouth.

Serial No.	Breakdown	How to fix
8	Bluetooth not found	Check whether the receiver is turned on. Whether the Bluetooth function of the receiver is turned on. If the BT light is always on/flashing, it means that the Bluetooth has been turned on. If the BT light is off, short press the POWER button to turn on the Bluetooth and connect again.

Product Parameter:

Wireless frequency	U Band
Audio signal	48KHz
Frequency response	50Hz-16KHz
Working time	About 6 hours
Wireless distance	Classroom environment 30M
Microphone type	Condenser microphone
Pairing method	Factory connected and paired
Power supply	Receiver: Lithium polymer battery Transmitter: AA alkaline batteries

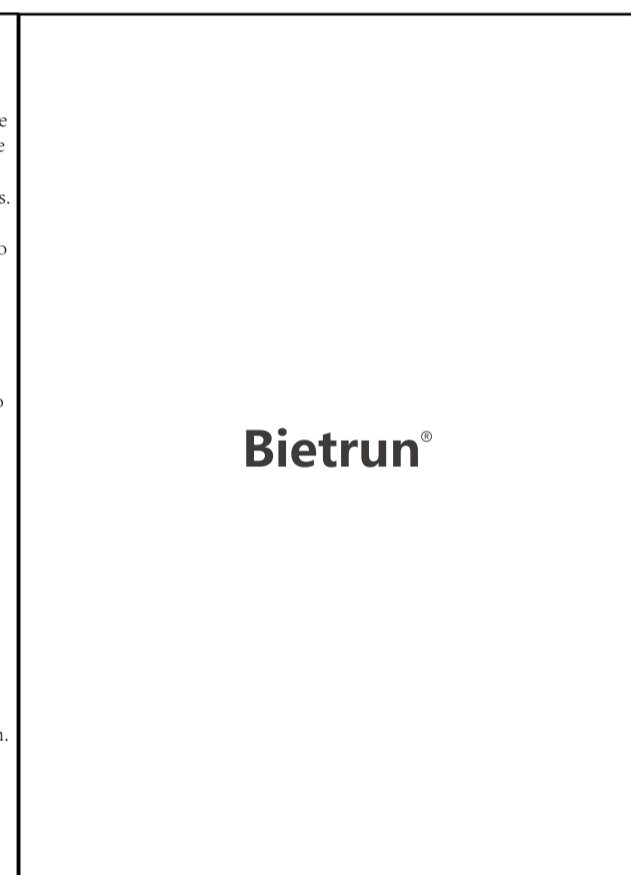
Package List:

- 1X Lavalier microphone
- 1X Headset microphone
- 1X Receiver
- 1X 3.5mm converter
- 1X Charging cable
- 1X User Manual

Manufacturer:
SHENZHEN LONGXIANG INTELLIGENT TECHNOLOGY CO., LTD.
Address: FLOOR 4, BUILDING D, FUXINLIN INDUSTRIAL AREA, HANGCHENG INDUSTRIAL ZONE FUHUA COMMUNITY XIXIANG STREET, BAOAN DISTRICT SHENZHEN GUANGDONG CHINA

FCC Statement:
This equipment has been tested and found to comply with the limits for a Class B digital device, pursuant to part 15 of the FCC Rules. These limits are designed to provide reasonable protection against harmful interference in a residential installation. This equipment generates, uses and can radiate radio frequency energy and, if not installed and used in accordance with the instructions, may cause harmful interference to radio communications. However, there is no guarantee that interference will not occur in a particular installation. If this equipment does cause harmful interference to radio or television reception, which can be determined by turning the equipment off and on, the user is encouraged to try to correct the interference by one or more of the following measures:
- Reorient or relocate the receiving antenna.
- Increase the separation between the equipment and receiver.
- Connect the equipment into an outlet on a circuit different from that to which the receiver is connected.
- Consult the dealer or an experienced radio/TV technician for help.
Caution: Any changes or modifications to this device not explicitly approved by manufacturer could void your authority to operate this equipment.
This device complies with part 15 of the FCC Rules. Operation is subject to the following two conditions: (1) This device may not cause harmful interference, and (2) this device must accept any interference received, including interference that may cause undesired operation.

RF Exposure Information:
The device has been evaluated to meet general RF exposure requirement. The device can be used in portable exposure condition without restriction.



日期	
产品名称	腰包麦克风领夹夹说明书
型号	WXM18
文件名	
图纸类型	手板 <input type="checkbox"/> 打样 <input type="checkbox"/> 生产 <input type="checkbox"/>
版本号	
设计	吴嘉欣
确认	
批准	

深圳璟都科技有限公司

图例:

工艺要求说明:

- 手板要求菱角分明, 最大限度接近3D模型文件。
- 表面纹理清晰, 质感接近成品。
- 未标注到的零件参照同类零件处理。

备注:

尺寸: 85 x 115 mm
材质: 铜版纸157g, 过胶折页