

FCC TEST REPORT

Client Name : SHENZHEN JINGDU TECHNOLOGY CO.,LTD
Address : 3F, Building D, Fuxinlin Park, Hangcheng industrial Park,
Qianjin 2 Road, Xixiang town, Baoan District, Shenzhen,
China
Product Name : Wireless Microphone
Date : Mar. 17, 2022

Shenzhen Anbotek Compliance Laboratory Limited



Contents

1. General Information.....	4
1.1. Client Information.....	4
1.2. Description of Device (EUT).....	4
1.3. Auxiliary Equipment Used During Test.....	5
1.4. Description of Test Configuration.....	5
1.5. Test Equipment List.....	6
1.6. Measurement Uncertainty.....	7
1.7. Description of Test Facility.....	7
2. Summary of Test Results.....	8
3. RF Output Power Test.....	9
3.1. Test Standard and Limit.....	9
3.2. Test Setup.....	9
3.3. Test Procedure.....	9
3.4. Test Data.....	10
4. Modulation Deviation Test.....	11
4.1. Test Standard and Limit.....	11
4.2. Test Setup.....	11
4.3. Test Procedure.....	11
4.4. Test Data.....	12
5. Frequency Stability Test.....	13
5.1. Test Standard and Limit.....	13
5.2. Test Setup.....	13
5.3. Test Procedure.....	13
5.4. Test Data.....	13
6. Operating Bandwidth & Emission Mask Test.....	16
6.1. Test Standard and Limit.....	16
6.2. Test Setup.....	16
6.3. Test Procedure.....	16
6.4. Test Data.....	17
7. Radiation Spurious Emission Test.....	19
7.1. Test Standard and Limit.....	19
7.2. Test Setup.....	19
7.3. Test Procedure.....	20
7.4. Test Data.....	20
APPENDIX I -- TEST SETUP PHOTOGRAPH.....	24
APPENDIX II -- EXTERNAL PHOTOGRAPH.....	25
APPENDIX III -- INTERNAL PHOTOGRAPH.....	28

TEST REPORT

Applicant : SHENZHEN JINGDU TECHNOLOGY CO.,LTD
Manufacturer : Shenzhen LongXiang Intelligent Technology Co.Ltd.
Product Name : Wireless Microphone
Model No. : WXM08, WXM08-1, WXM08-2, WXM08-3, WXM08-4, WXM08-5, WXM08-6,
WXM08A, WXM08B, WXM08C, WXM08D, WXM08E, WXM08F
Trade Mark : Bietrun, KAPEBOW
Rating(s) : Input: DC 3V by AA*2 battery

Test Standard(s) : **FCC Part 74 Subpart H, Section 74.861**
ANSI C63.26-2015;

Test Method(s) : **KDB 971168 D01 Power Meas License Digital Systems v03r01**

The device described above is tested by Shenzhen Anbotek Compliance Laboratory Limited to determine the maximum emission levels emanating from the device and the severe levels of the device can endure and its performance criterion. The measurement results are contained in this test report and Shenzhen Anbotek Compliance Laboratory Limited is assumed full of responsibility for the accuracy and completeness of these measurements. Also, this report shows that the EUT (Equipment Under Test) is technically compliant with the FCC Part 74 Subpart H requirements.

This report applies to above tested sample only and shall not be reproduced in part without written approval of Shenzhen Anbotek Compliance Laboratory Limited.

Date of receipt

Mar. 01, 2022

Date of Test

Mar. 01~10, 2022

Prepared By



(Ella Liang)

Approved & Authorized Signer



(Kingkong Jin)

1. General Information

1.1. Client Information

Applicant	:	SHENZHEN JINGDU TECHNOLOGY CO.,LTD
Address	:	3F, Building D, Fuxinlin Park, Hangcheng industrial Park, Qianjin 2 Road, Xixiang town, Baoan District, Shenzhen, China
Manufacturer	:	Shenzhen LongXiang Intelligent Technology Co.Ltd.
Address	:	FLOOR 4, BULIDING D, FUXINLIN INDUSTRIAL AERA, HENGCHENG INDUSTRIAL ZONE FUHUA COMMUNITY, XIXIANG STREET, BAOAN DISTRICT SHENZHEN GUANGDONG CHINA
Factory	:	Shenzhen LongXiang Intelligent Technology Co.Ltd.
Address	:	FLOOR 4, BULIDING D, FUXINLIN INDUSTRIAL AERA, HENGCHENG INDUSTRIAL ZONE FUHUA COMMUNITY, XIXIANG STREET, BAOAN DISTRICT SHENZHEN GUANGDONG CHINA

1.2. Description of Device (EUT)

Product Name	:	Wireless Microphone
Model No.	:	WXM08, WXM08-1, WXM08-2, WXM08-3, WXM08-4, WXM08-5, WXM08-6, WXM08A, WXM08B, WXM08C, WXM08D, WXM08E, WXM08F (Note: All samples are the same except the model number and appearance, so we prepare "WXM08" for test only.)
Trade Mark	:	Bietrun, KAPEBOW
Test Power Supply	:	DC 3V Battery
Test Sample No.	:	1-2-1(Normal Sample), 1-2-2(Engineering Sample)
Product Description	Operation Frequency:	Group A: 560.5-574.5MHz Group B: 580.5-594.5MHz
	Channel Spacing	1MHz
	Number of Channel:	30 Channels
	Modulation Type:	GFSK
	Antenna Type:	Monopole antenna
	Antenna Gain(Peak):	2 dBi (Provided by customer)
	Adapter:	Model: GAT-0501000U Input: 100-240V~50/60Hz, 0.4A Output: 5V 1000mA
Remark: 1) For a more detailed features description, please refer to the manufacturer's specifications or the User's Manual.		

1.3. Auxiliary Equipment Used During Test

Description	Rating(s)
--	--

1.4. Description of Test Configuration

Channel	Frequency (MHz)	Channel	Frequency (MHz)	Channel	Frequency (MHz)
1	560.5	11	570.5	21	585.5
2	561.5	12	571.5	22	586.5
3	562.5	13	572.5	23	587.5
4	563.5	14	573.5	24	588.5
5	564.5	15	574.5	25	589.5
6	565.5	16	580.5	26	590.5
7	566.5	17	581.5	27	591.5
8	567.5	18	582.5	28	592.5
9	568.5	19	583.5	29	593.5
10	569.5	20	584.5	30	594.5

Note:

1. The engineering test program was provided and the EUT was programmed to be in continuously transmitting mode.
2. EUT was tested with Channel 1, 8 and 30.

1.5. Test Equipment List

Item	Equipment	Manufacturer	Model No.	Serial No.	Last Cal.	Cal. Interval
1.	Three Phase V-type Artificial Power Network	CYBERTEK	EM5040DT	E215040DT001	Jul 05, 2021	1 Year
2.	EMI Test Receiver	Rohde & Schwarz	ESCI	100627	Oct. 22, 2021	1 Year
3.	EMI Test Receiver	Rohde & Schwarz	ESR26	101481	Oct. 22, 2021	1 Year
4.	RF Switching Unit	Compliance Direction	RSU-M2	38303	Oct. 22, 2021	1 Year
5.	MAX Spectrum Analysis	Agilent	N9020A	MY51170037	Oct. 22, 2021	1 Year
6.	Preamplifier	SKET Electronic	BK1G18G30 D	KD17503	Oct. 22, 2021	1 Year
7.	Double Ridged Horn Antenna	Instruments corporation	GTH-0118	351600	Oct. 22, 2021	2 Year
8.	Bilog Broadband Antenna	Schwarzbeck	VULB9163	VULB 9163-289	Oct. 22, 2021	2 Year
9.	Loop Antenna	Schwarzbeck	FMZB1519B	00053	Oct. 22, 2021	2 Year
10.	Horn Antenna	A-INFO	LB-180400-K F	J211060628	Oct. 22, 2021	2 Year
11.	Pre-amplifier	SONOMA	310N	186860	Oct. 22, 2021	1 Year
12.	EMI Test Software EZ-EMC	SHURPLE	N/A	N/A	N/A	N/A
13.	RF Test Control System	YIHENG	YH3000	2017430	Oct. 22, 2021	1 Year
14.	Power Sensor	DAER	RPR3006W	15100041SN045	Oct. 22, 2021	1 Year
15.	Power Sensor	DAER	RPR3006W	15100041SN046	Oct. 22, 2021	1 Year
16.	MXA Spectrum Analysis	KEYSIGHT	N9020A	MY53280032	Oct. 22, 2021	1 Year
17.	MXG RF Vector Signal Generator	Agilent	N5182A	MY48180656	Oct. 22, 2021	1 Year
18.	Signal Generator	Agilent	E4421B	MY41000743	Oct. 22, 2021	1 Year
19.	DC Power Supply	IVYTECH	IV3605	1804D360510	Oct. 22, 2021	1 Year
20.	Constant Temperature Humidity Chamber	ZHONGJIAN	ZJ-KHWS80 B	N/A	Oct. 22, 2021	1 Year

1.6. Measurement Uncertainty

Radiation Uncertainty	Ur = 3.9 dB (Horizontal)
	Ur = 3.8 dB (Vertical)

1.7. Description of Test Facility

The test facility is recognized, certified, or accredited by the following organizations:

FCC-Registration No.: 184111

Shenzhen Anbotek Compliance Laboratory Limited, EMC Laboratory has been registered and fully described in a report filed with the (FCC) Federal Communications Commission. The acceptance letter from the FCC is maintained in our files. Registration No. 184111.

ISED-Registration No.: 8058A

Shenzhen Anbotek Compliance Laboratory Limited, EMC Laboratory has been registered and fully described in a report filed with the (ISED) Innovation, Science and Economic Development Canada. The acceptance letter from the ISED is maintained in our files. Registration 8058A.

Test Location

Shenzhen Anbotek Compliance Laboratory Limited.

1/F, Building D, Sogood Science and Technology Park, Sanwei community, Hangcheng Street, Bao'an District, Shenzhen, Guangdong, China.518102

2. Summary of Test Results

Standard Section	Test Item	Result
74.861(e)(1)	RF Output Power	PASS
74.861(e)(3)	Modulation Deviation	N/A
74.861(e)(4)	Frequency Stability	PASS
74.861(e)(5)(7)	Operating Bandwidth & Emission Mask	PASS
74.861(e)(7)	Radiated Spurious Emissions	PASS
Remark: "N/A" is an abbreviation for Not Applicable.		

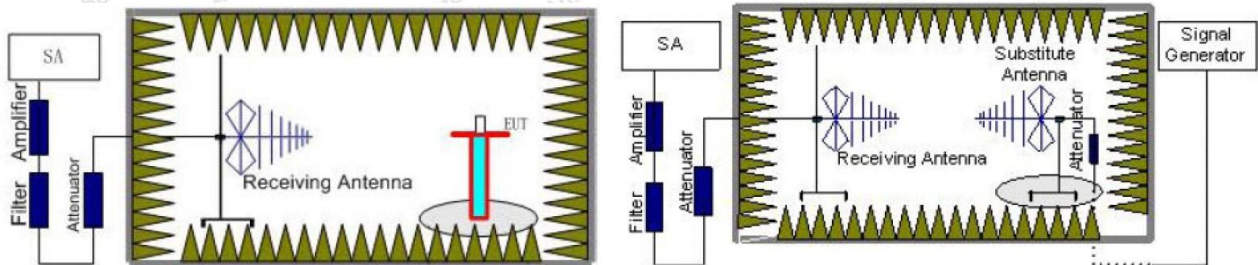
3. RF Output Power Test

3.1. Test Standard and Limit

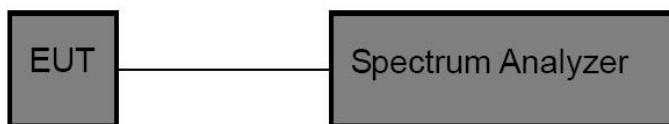
Test Standard	FCC Part 74 Subpart H, §74.861(e)(1)	
Test Limit	Frequency Band	Limit
	54-72, 76-88, and 174-216 MHz	<input type="checkbox"/> 50mW (17dBm) EIRP
	470-608 and 614-698	<input checked="" type="checkbox"/> 250mW (24dBm) conducted power
	600 MHz duplex gap	<input type="checkbox"/> 20mW (13dBm) EIRP

3.2. Test Setup

EIRP Test Method



Conducted Power Test Method



3.3. Test Procedure

EIRP Test Method (ANSI C63.26 Section 5.2.7)

1. The EUT was placed on the top of the turntable 0.8 meter above ground. The phase center of the receiving antenna mounted on the top of a height-variable antenna tower was placed 3 meters far away from the turntable.
2. Power on the EUT and all the supporting units. The turntable was rotated by 360 degrees to determine the position of the highest radiation.
3. The height of the broadband receiving antenna was varied between one meter and four meters above ground to find the maximum emissions field strength of both horizontal and vertical polarization.
4. For each suspected emissions, the antenna tower was scan (from 1 M to 4 M) and then the turntable was rotated (from 0 degree to 360 degrees) to find the maximum reading.
5. Set the test-receiver system to Peak or CISPR quasi-peak Detect Function with specified bandwidth under Maximum Hold Mode.
6. $EIRP [dBm] = E[dB(\mu V)/m] - 95.2$

Conducted Power Test Method (ANSI C63.26 Section 5.2.3.3)

1. Connect EUT RF output port to the Spectrum Analyzer through an RF attenuator.
2. RBW \geq OBW..
3. VBW \geq 3*RBW.
4. Span \geq 2*OBW.
5. Sweep time \geq 10 x (number of points in sweep) x (transmission symbol period) .
6. Detector: Peak.
7. Trace mode = Max hold.
8. Allow trace to stabilize. Use the marker-to-peak function to set the marker to the peak of the emission.

The indicated level is the peak output power, after any corrections for external attenuators and cables.

3.4. Test Data

Test Item	:	Output Power	Test Mode	:	CH Low ~ CH High
Test Voltage	:	DC 3V Battery	Temperature	:	23.6℃
Test Result	:	PASS	Humidity	:	53 %

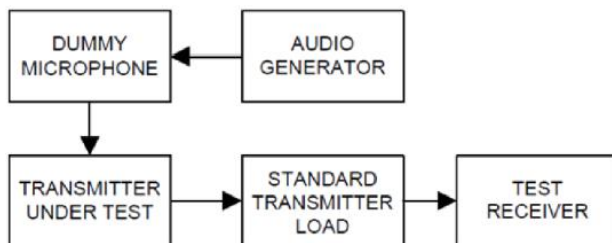
Frequency (MHz)	Peak Power output (dBm)	Limit (dBm)	Results
560.5	3.09	24	PASS
567.5	3.40	24	PASS
594.5	3.35	24	PASS

4. Modulation Deviation Test

4.1. Test Standard and Limit

Test Standard	FCC Part 74 Subpart H, §74.861(e)(3)
Test Limit	± 75 kHz

4.2. Test Setup



4.3. Test Procedure

Test Method: TIA/EIA-603-E

Audio Frequency Response:

- Connect the equipment as illustrated.
- Set the test receiver to measure peak positive deviation. Set the audio bandwidth for ≤ 50 Hz to $\leq 15,000$ Hz. Turn the de-emphasis function off.
- Adjust the transmitter per the manufacturer's procedure for full rated system deviation.
- Apply a 1000 Hz tone and adjust the audio frequency generator to produce 20% of the rated system deviation.
- Set the test receiver to measure rms deviation and record the deviation reading as DEV_{REF} .
- Set the audio frequency generator to the desired test frequency between 300 Hz and 3000 Hz.
- Record the test receiver deviation reading as DEV_{FREQ} .
- Calculate the audio frequency response at the present frequency as:

$$\text{audio frequency response} = 20 \log_{10} \left(\frac{DEV_{FREQ}}{DEV_{REF}} \right)$$

- Repeat steps f) through h) for all the desired test frequencies.

Modulation limiting:

- Connect the equipment as illustrated.
- Adjust the transmitter per the manufacturer's procedure for full rated system deviation.
- Set the test receiver to measure peak positive deviation. Set the audio bandwidth for ≤ 0.25 Hz to $\geq 15,000$ Hz. Turn the de-emphasis function off.
- Apply a 1000 Hz modulating signal to the transmitter from the audio frequency generator, and adjust the level to obtain 60% of full rated system deviation.

- e) Increase the level from the audio generator by 20 dB in 5 dB increments recording the deviation as measured from the test receiver in each step. Verify that the audio level used to make the OBW measurement is included in the sweep.
- f) Repeat for step e) at 300 Hz, 2500 Hz and 3000 Hz at a minimum using the 0 dB reference level obtained in step d).
- g) Set the test receiver to measure peak negative deviation and repeat step d) through step f).
- h) The values recorded in step f) and step g) are the modulation limiting.

4.4. Test Data

N/A

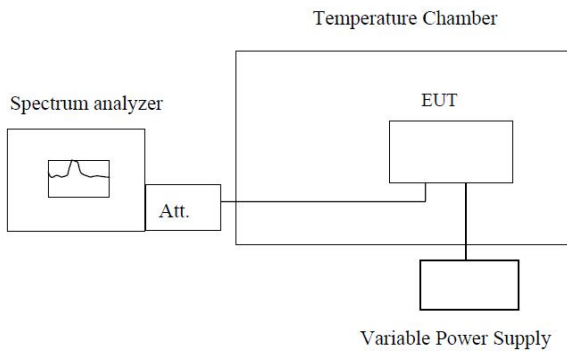


5. Frequency Stability Test

5.1. Test Standard and Limit

Test Standard	FCC Part 74 Subpart H, §74.861(e)(4)
Test Limit	The frequency tolerance of the transmitter shall be 0.005 percent.

5.2. Test Setup



Note : Measurement setup for testing on Antenna connector

5.3. Test Procedure

According to FCC 2.1055, (a) the frequency stability shall be measured with variation of ambient temperature as follows:

1. The equipment under test was connected to an external power supply.
2. RF output was connected to a frequency counter or spectrum analyzer via feed through attenuators.
3. The EUT was placed inside the temperature chamber.
4. Set the spectrum analyzer RBW low enough to obtain the desired frequency resolution and measure EUT 25°C operating frequency as reference frequency.
5. Turn EUT off and set the chamber temperature to -30°C. After the temperature stabilized for approximately 30 minutes recorded the frequency.
6. Repeat step measure with 10°C increased per stage until the highest temperature of +50°C reached.

5.4. Test Data

Test Item	: Frequency Stability	Test Mode	: CH Low ~ CH High
Test Voltage	: DC 3V Battery	Temperature	: 23.6°C
Test Result	: PASS	Humidity	: 53 %

Test channel: 560.5MHz				
Temperature (°C)	Power Supplied (DC V)	Measured frequency (MHz)	Error (ppm)	Limit (ppm)
-30	3.0	560.519285	34.41	50
-20		560.518879	33.68	50
-10		560.520097	35.86	50
0		560.519488	34.77	50
10		560.518473	32.96	50
20		560.519285	34.41	50
30		560.518067	32.23	50
40		560.517864	31.87	50
50		560.519082	34.04	50
20	2.7	560.517255	30.79	50
20	3.3	560.518879	33.68	50
Test channel: 567.5MHz				
Temperature (°C)	Power Supplied (DC V)	Measured frequency (MHz)	Error (ppm)	Limit (ppm)
-30	3.0	567.518810	33.15	50
-20		567.518414	32.45	50
-10		567.519602	34.54	50
0		567.519008	33.49	50
10		567.518018	31.75	50
20		567.518810	33.15	50
30		567.517622	31.05	50
40		567.517424	30.70	50
50		567.518612	32.80	50
20	2.7	567.516830	29.66	50
20	3.3	567.518414	32.45	50

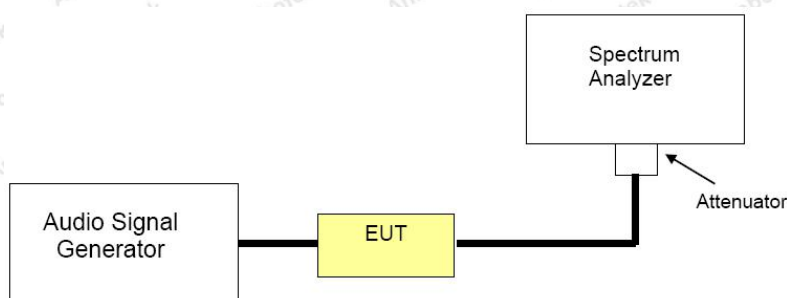
Test channel: 594.5MHz				
Temperature (°C)	Power Supplied (DC V)	Measured frequency (MHz)	Error (ppm)	Limit (ppm)
-30	3.0	594.518050	30.36	50
-20		594.517670	29.72	50
-10		594.518810	31.64	50
0		594.518240	30.68	50
10		594.517290	29.08	50
20		594.518050	30.36	50
30		594.516910	28.44	50
40		594.516720	28.12	50
50		594.517860	30.04	50
20	2.7	594.516150	27.17	50
20	3.3	594.517670	29.72	50

6. Operating Bandwidth & Emission Mask Test

6.1. Test Standard and Limit

Test Standard	FCC Part 74 Subpart H, §74.861(e)(5)(7)
Test Limit	<p>The operating bandwidth shall not exceed 200 kHz.</p> <p>Analog emissions within the band from one megahertz below to one megahertz above the carrier frequency shall comply with the emission mask in section 8.3.1.2 of the European Telecommunications Institute Standard ETSI EN 300 422-1 v1.4.2 (2011-08), Electromagnetic compatibility and Radio spectrum Matters (ERM); Wireless microphones in the 25 MHz to 3 GHz frequency range; part 1: Technical characteristics and methods of measurement. Digital emissions within the band from one megahertz below to one megahertz above the carrier frequency shall comply with the emission mask in section 8.3.2.2 (Figure 4) of the European Telecommunications Institute Standard ETSI EN 300 422-1 v1.4.2 (2011-08), Electromagnetic compatibility and Radio spectrum Matters (ERM); Wireless microphones in the 25 MHz to 3 GHz frequency range; part 1: Technical characteristics and methods of measurement. Beyond one megahertz below and above the carrier frequency, emissions shall comply with the limits specified in section 8.4 of ETSI EN 300 422-1 v1.4.2 (2011-08). The requirements of this paragraph (e)(7) shall not apply to applications for certification of equipment in these bands until nine months after release of the Commission's Channel Reassignment Public Notice, as defined in § 73.3700(a)(2) of this chapter.</p>

6.2. Test Setup



6.3. Test Procedure

The OBW is according to KDB 971168 D01v03r01

The Emission Mask is according to section 8.3 of ETSI EN 300 422-1 V1.4.2 (2011-08).

6.4. Test Data

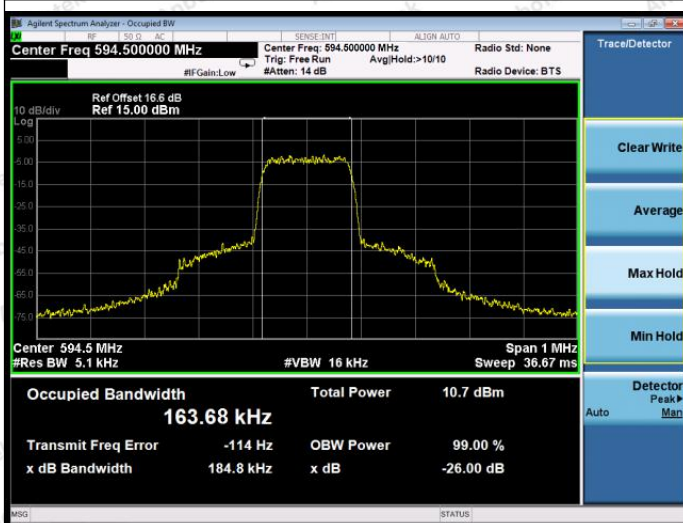
Test Item	:	Bandwidth	Test Mode	:	CH Low ~ CH High
Test Voltage	:	DC 3V Battery	Temperature	:	23.6°C
Test Result	:	PASS	Humidity	:	53 %

Frequency (MHz)	99% Bandwidth (KHz)	Limit (KHz)	Test Result
560.5	164.36	200	Pass
567.5	164.77	200	Pass
594.5	163.68	200	Pass

99% Bandwidth



Channel: 560.5MHz

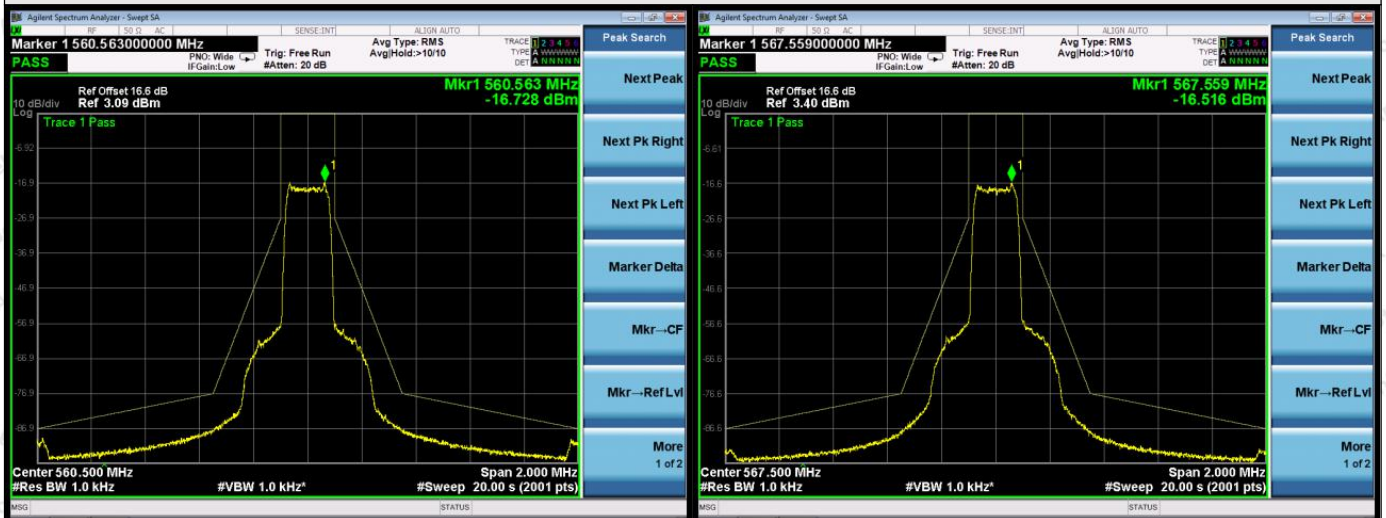


Channel: 594.5MHz

Channel: 567.5MHz

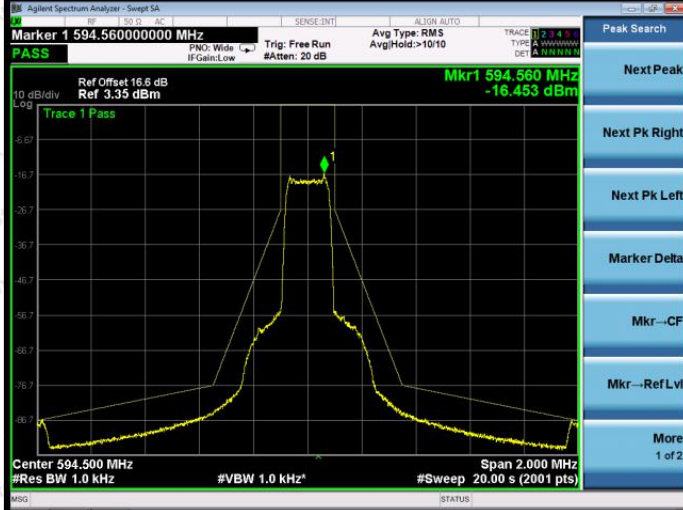


Necessary Bandwidth



Channel: 560.5MHz

Channel: 567.5MHz



Channel: 594.5MHz

7. Radiation Spurious Emission Test

7.1. Test Standard and Limit

Test Standard	FCC Part 74 Subpart H, §74.861(e)(7)
Test Limit	Analog emissions within the band from one megahertz below to one megahertz above the carrier frequency shall comply with the emission mask in section 8.3.1.2 of the European Telecommunications Institute Standard ETSI EN 300 422-1 v1.4.2 (2011-08), Electromagnetic compatibility and Radio spectrum Matters (ERM); Wireless microphones in the 25 MHz to 3 GHz frequency range; part 1: Technical characteristics and methods of measurement. Digital emissions within the band from one megahertz below to one megahertz above the carrier frequency shall comply with the emission mask in section 8.3.2.2 (Figure 4) of the European Telecommunications Institute Standard ETSI EN 300 422-1 v1.4.2 (2011-08), Electromagnetic compatibility and Radio spectrum Matters (ERM); Wireless microphones in the 25 MHz to 3 GHz frequency range; part 1: Technical characteristics and methods of measurement. Beyond one megahertz below and above the carrier frequency, emissions shall comply with the limits specified in section 8.4 of ETSI EN 300 422-1 v1.4.2 (2011-08). The requirements of this paragraph (e)(7) shall not apply to applications for certification of equipment in these bands until nine months after release of the Commission's Channel Reassignment Public Notice, as defined in § 73.3700(a)(2) of this chapter.

7.2. Test Setup

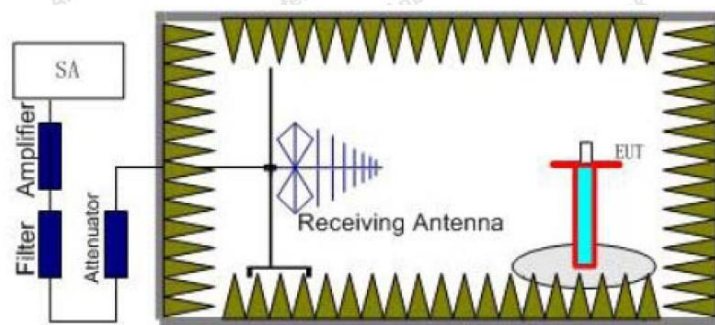


Figure 1

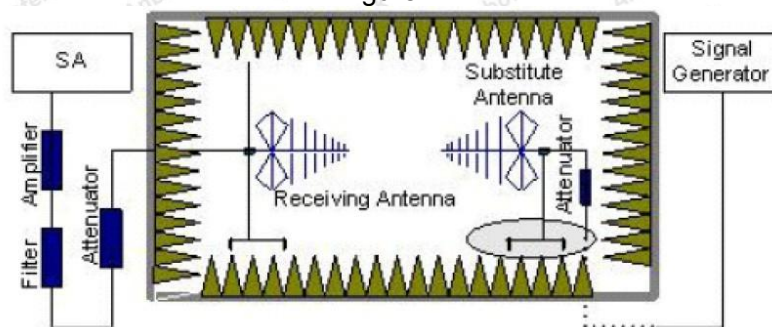


Figure 2

7.3. Test Procedure

1. EUT was placed on a 0.8 meter for below 1GHz and 1.5 meter for above 1GHz high non-conductive stand at a 3 meter test distance from the receive antenna. A receiving antenna was placed on the antenna mast 3 meters from the EUT for emission measurements. The height of receiving antenna is 1.0m. Detected emissions were maximized at each frequency by rotating the EUT through 360° and adjusting the receiving antenna polarization. The radiated emission measurements of all transmit frequencies in three channels (High, Middle, Low) were measured with peak detector.
2. A log-periodic antenna or double-ridged waveguide horn antenna shall be substituted in place of the EUT. The log-periodic antenna will be driven by a signal generator and the level will be adjusted till the same power value on the spectrum analyzer or receiver. The level of the spurious emissions can be calculated through the level of the signal generator, cable loss, the gain of the substitution antenna and the reading of the spectrum analyzer or receiver.
3. The EUT is then put into continuously transmitting mode at its maximum power level during the test. Set Test Receiver or Spectrum RBW=1MHz, VBW=3MHz for above 1GHz and RBW=100kHz, VBW=300kHz for 30MHz to 1GHz, And the maximum value of the receiver should be recorded as (Pr).
4. The EUT shall be replaced by a substitution antenna. In the chamber, an substitution antenna for the frequency band of interest is placed at the reference point of the chamber. An RF Signal source for the frequency band of interest is connected to the substitution antenna with a cable that has been constructed to not interfere with the radiation pattern of the antenna. A power (PMea) is applied to the input of the substitution antenna, and adjust the level of the signal generator output until the value of the receiver reach the previously recorded (Pr). The power of signal source (PMea) is recorded. The test should be performed by rotating the test item and adjusting the receiving antenna polarization.
5. A amplifier should be connected to the Signal Source output port. And the cable should be connect between the Amplifier and the Substitution Antenna. The cable loss (Pcl), the Substitution Antenna Gain (Ga) and the Amplifier Gain (PAg) should be recorded after test.
6. The measurement results are obtained as described below:
Power(EIRP)=PMea- PAg - Pcl + Ga
We used SMF100A micowave signal generator which signal level can up to 33dBm,so we not used power Amplifier for substitution test; The measurement results are amend as described below:
Power(EIRP)=PMea- Pcl + Ga
7. This value is EIRP since the measurement is calibrated using an antenna of known gain (2.15 dBi) and known input power.
ERP can be calculated from EIRP by subtracting the gain of the dipole, ERP = EIRP-2.15dBi.

7.4. Test Data

PASS

The test data are shown in the following pages.

Test Results:

Test Channel: 560.5MHz				
Below 1GHz:				
Frequency MHz	Measurement (dBm)	Limit (dBm)	Margin (dB)	Antenna Polar (H/V)
62.15	-70.48	-13.00	-57.48	H
154.79	-52.18	-13.00	-39.18	H
227.18	-74.40	-13.00	-61.40	H
560.50	-17.59	-13.00	-4.59	H
817.53	-65.99	-13.00	-52.99	H
1000.00	-62.46	-13.00	-49.46	H
53.91	-71.45	-13.00	-58.45	V
163.01	-61.00	-13.00	-48.00	V
178.77	-71.24	-13.00	-58.24	V
560.50	-32.49	-13.00	-19.49	V
549.15	-61.43	-13.00	-48.43	V
1000.00	-59.32	-13.00	-46.32	V
Above 1GHz:				
Frequency MHz	Measurement (dBm)	Limit (dBm)	Margin (dB)	Antenna Polar (H/V)
1681.50	-33.27	-13.00	-20.27	H
1799.21	-46.85	-13.00	-33.85	H
2242.00	-50.33	-13.00	-37.33	H
1799.21	-37.83	-13.00	-24.83	V
1681.50	-52.06	-13.00	-39.06	V
2242.00	-53.30	-13.00	-40.30	V

Remark: Margin = Limit - Measurement

Test Channel: 567.5MHz				
Below 1GHz:				
Frequency MHz	Measurement (dBm)	Limit (dBm)	Margin (dB)	Antenna Polar (H/V)
69.77	-68.89	-13.00	-55.89	H
143.88	-58.27	-13.00	-45.27	H
199.09	-72.66	-13.00	-59.66	H
567.50	-21.81	-13.00	-8.81	H
607.45	-64.37	-13.00	-51.37	H
1000.00	-62.55	-13.00	-49.55	H
56.40	-72.02	-13.00	-59.02	V
122.49	-55.60	-13.00	-42.60	V
190.01	-73.08	-13.00	-60.08	V
567.50	-28.69	-13.00	-15.69	V
607.03	-63.45	-13.00	-50.45	V
1000.00	-58.60	-13.00	-45.60	V
Above 1GHz:				
Frequency MHz	Measurement (dBm)	Limit (dBm)	Margin (dB)	Antenna Polar (H/V)
1702.50	-30.02	-13.00	-17.02	H
1821.68	-43.93	-13.00	-30.93	H
2270.00	-49.37	-13.00	-36.37	H
1821.68	-37.80	-13.00	-24.80	V
1702.50	-52.17	-13.00	-39.17	V
2270.00	-46.40	-13.00	-33.40	V

Remark: Margin = Limit - Measurement

Test Channel: 594.5MHz				
Below 1GHz:				
Frequency MHz	Measurement (dBm)	Limit (dBm)	Margin (dB)	Antenna Polar (H/V)
63.75	-70.87	-13.00	-57.87	H
134.28	-55.74	-13.00	-42.74	H
217.93	-72.99	-13.00	-59.99	H
594.50	-16.42	-13.00	-3.42	H
702.84	-62.38	-13.00	-49.38	H
1000.00	-60.63	-13.00	-47.63	H
52.31	-73.75	-13.00	-60.75	V
163.73	-57.55	-13.00	-44.55	V
199.27	-74.63	-13.00	-61.63	V
594.50	-27.61	-13.00	-14.61	V
519.69	-62.57	-13.00	-49.57	V
1000.00	-61.12	-13.00	-48.12	V
Above 1GHz:				
Frequency MHz	Measurement (dBm)	Limit (dBm)	Margin (dB)	Antenna Polar (H/V)
1783.50	-32.76	-13.00	-19.76	H
1908.35	-43.41	-13.00	-30.41	H
2378.00	-49.56	-13.00	-36.56	H
1908.35	-37.92	-13.00	-24.92	V
1783.50	-46.26	-13.00	-33.26	V
2378.00	-50.52	-13.00	-37.52	V

Remark: Margin = Limit - Measurement

APPENDIX I -- TEST SETUP PHOTOGRAPH

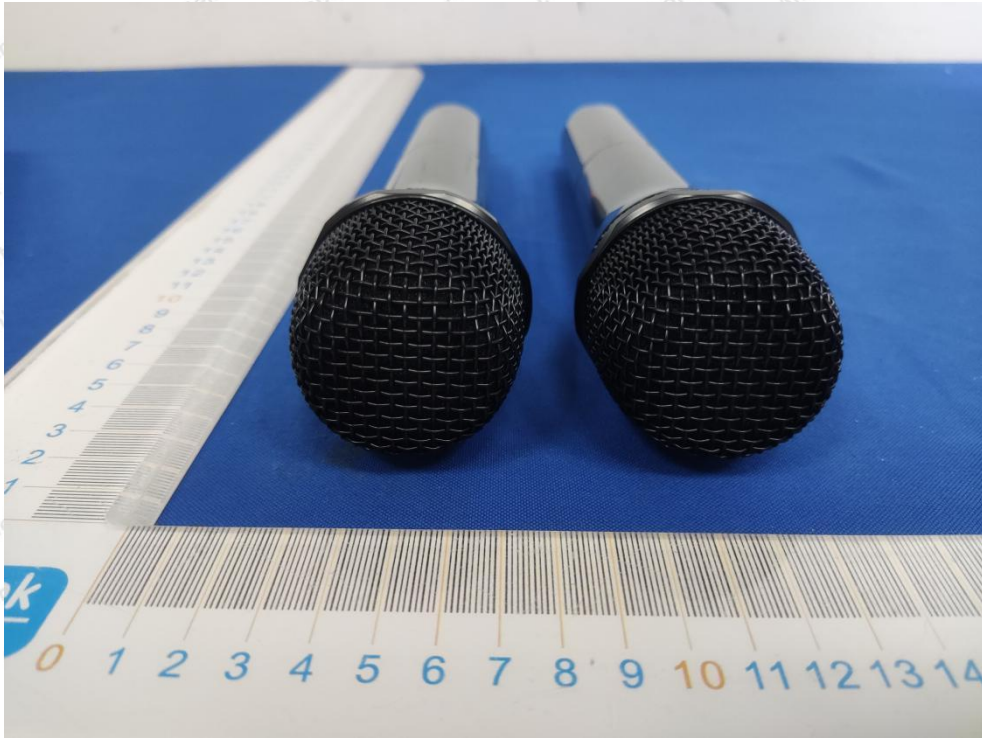
Photo of Radiation Emission Test



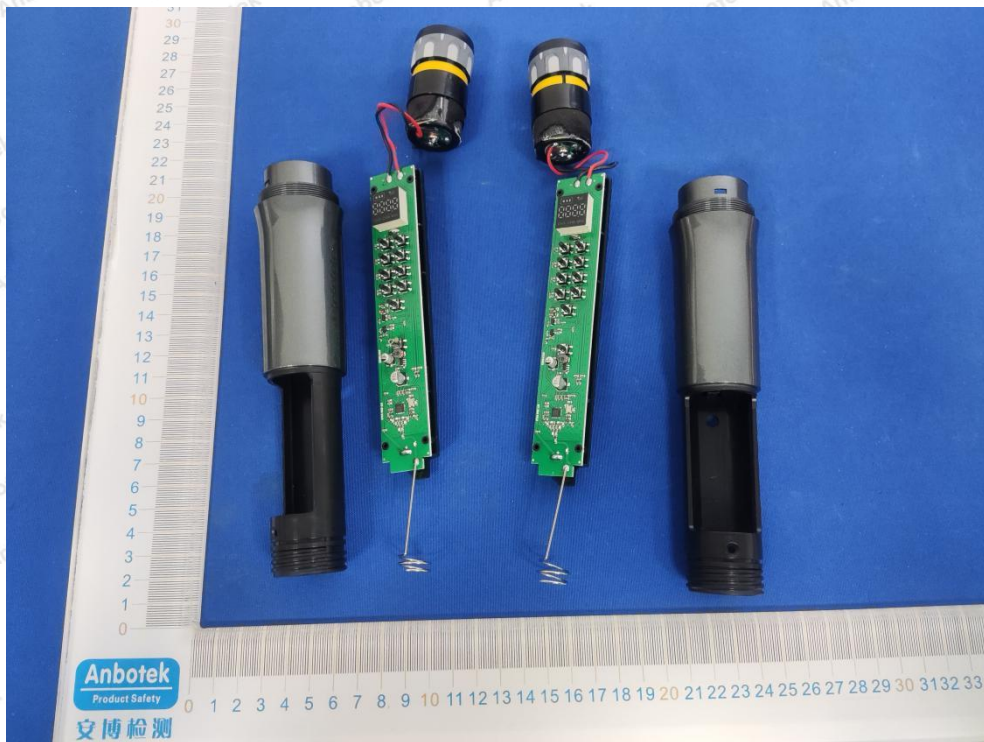
APPENDIX II -- EXTERNAL PHOTOGRAPH

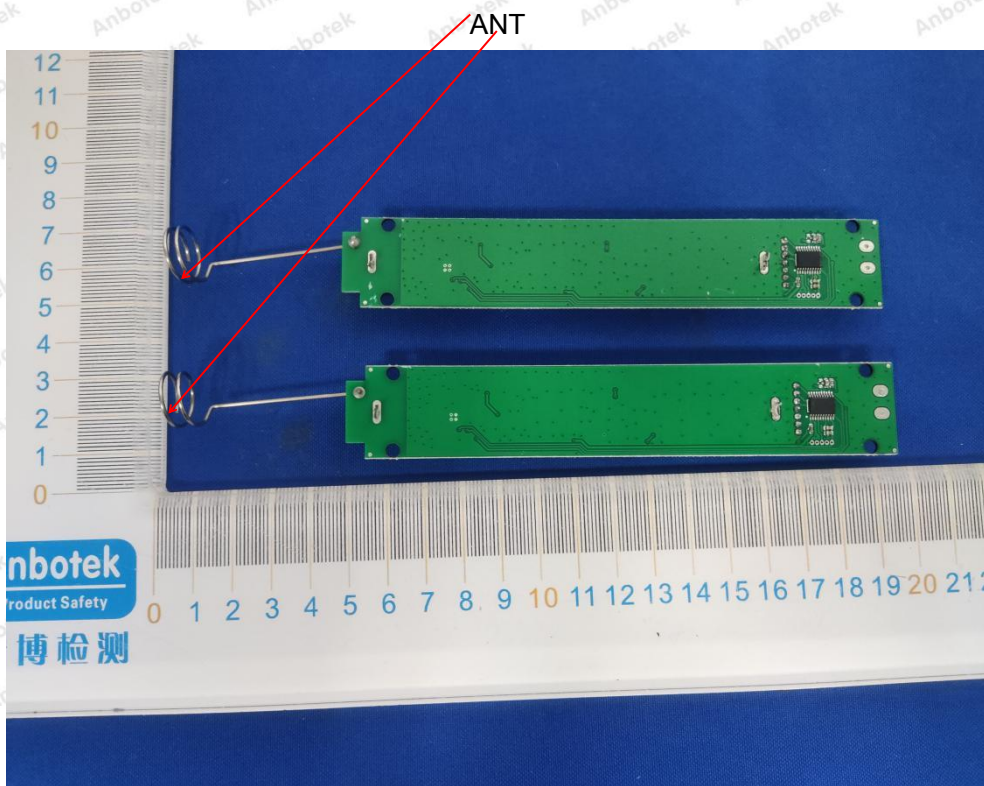
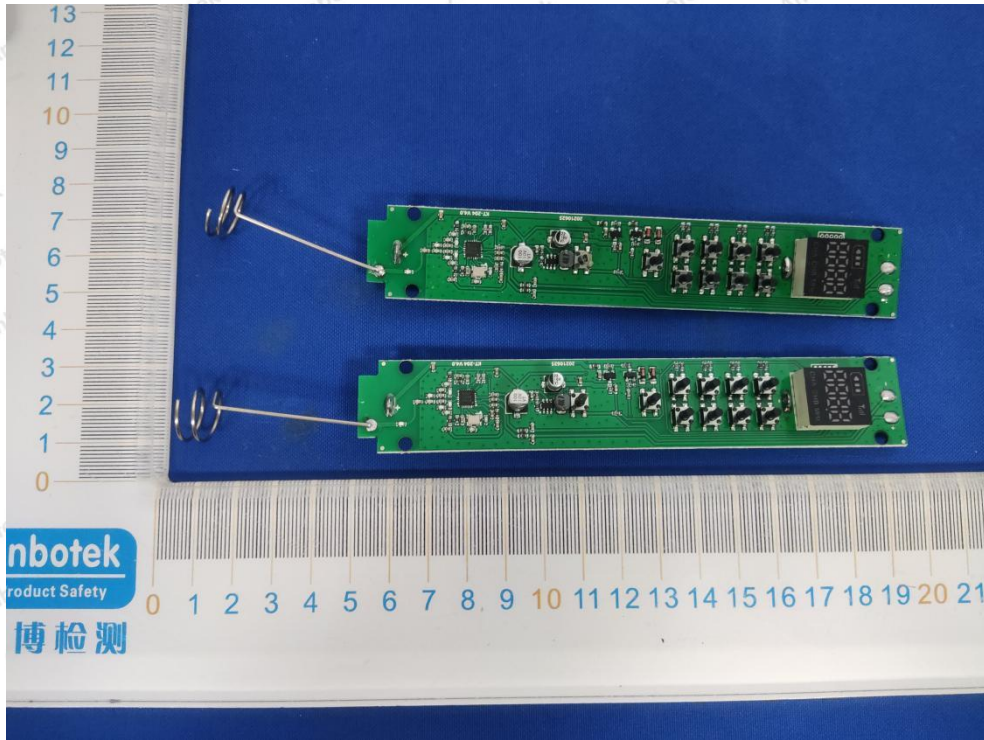


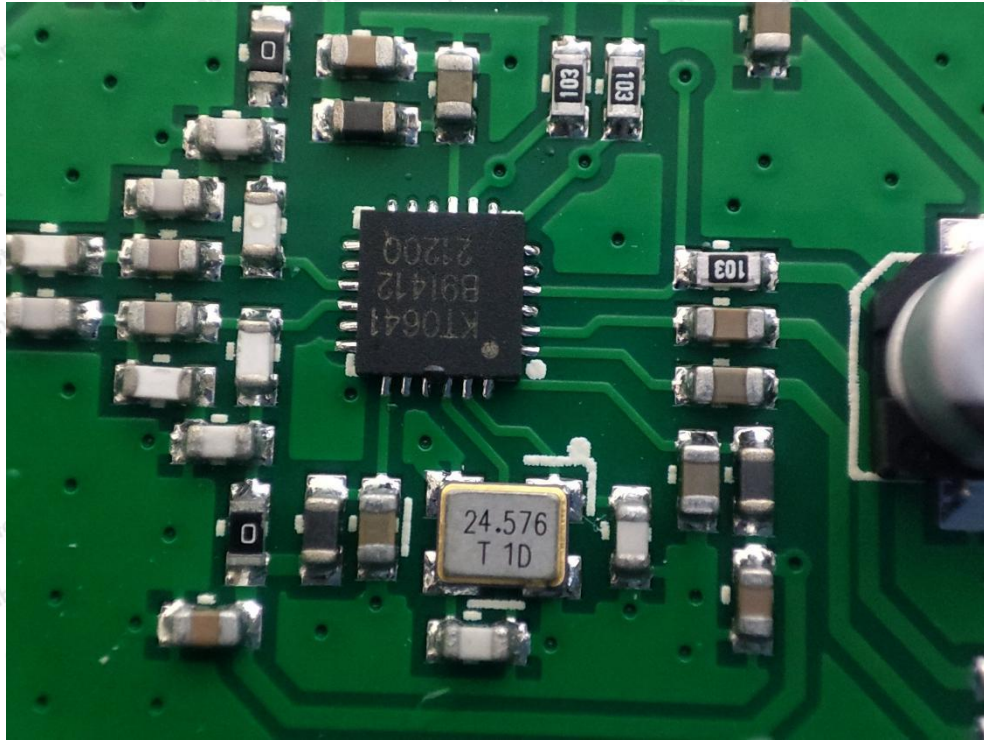




APPENDIX III -- INTERNAL PHOTOGRAPH







----- End of Report -----