

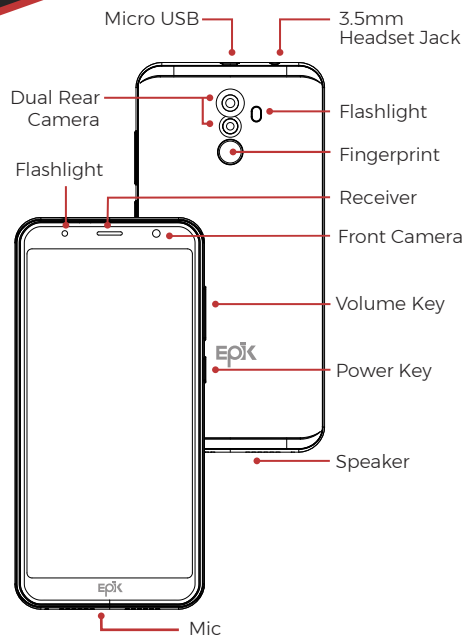


# Jaguar X572

## QUICK GUIDE

A New Mobile Experience

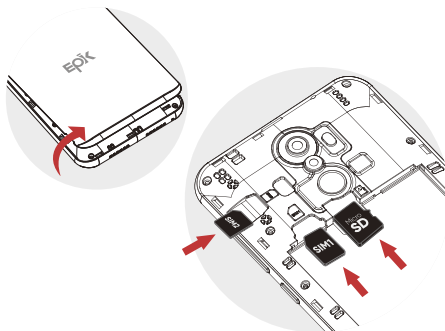
Visit [epikmobile.com](http://epikmobile.com) for full version of user manual.



### SIM Card and SD Card

#### Dual Sim Installation

- Carefully remove the back cover of phone.
- Insert SIM by sliding it into the slot of SIM 1.
- Repeat steps with SIM 2 ( If available).
- Insert MicroSD Card by sliding it into the slot.
- When finished, put back cover and turn on the device.



### Battery

This phone has a removable battery. Please fully charge your phone before using it (min. 2 hours).



### Set up Wi-Fi Connection

Go to Settings > Wireless & Networks > Wi-Fi > Select desired Network, insert password and connect.



### Fingerprint

Settings > Security > Fingerprint > Follow steps on the screen.



### Dual Rear & Front Camera

Enjoy better quality pictures with dual rear camera and front camera, both with flash.



### Settings

Access settings for more options in your device.

### ▲ Safety information

- Do not make or receive handheld calls while driving, and never text while driving.
- Do not use at gas stations.
- Keep your phone at least 15 mm away from your ear or body while making calls.
- Your phone may produce a bright or flashing light.
- Small parts may cause choking.
- Please do not dispose of used batteries in the trash. The proper disposal of your waste battery will help to protect the environment and human health.
- Your phone can produce a loud sound.
- Avoid contact with magnetic fields.
- Keep away from pacemakers and other electronic medical devices.
- Avoid extreme temperatures.
- Switch off in hospitals and other medical facilities when requested.
- Avoid contact with liquids. Keep your phone dry.
- Switch off in aircraft and airports when requested.
- Do not disassemble your phone.
- Switch off when near explosive materials or liquids.
- Please use only authentic Epikone accessories with this phone, and do not use the battery with any other type of phone.
- Do not rely on your phone for emergency communications.

### 🌐 Visit our website

[epikmobile.com](http://epikmobile.com)

On this website, you can also find our Privacy and Terms of Use Policies relating to our phones, the Epik mobile application and our website (our "Services"). Please take a moment to review them and familiarize yourself with our privacy and use practices. Whenever you use our Services, you consent to the practices listed in these Policies.

This manual and the installed software of the X572 are subject to change by Epik One America Corporation without advance notice.

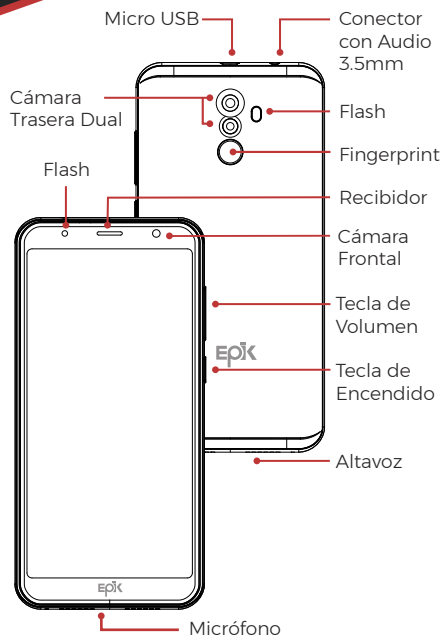


# Jaguar X572

## GUÍA RÁPIDA

Una nueva experiencia móvil

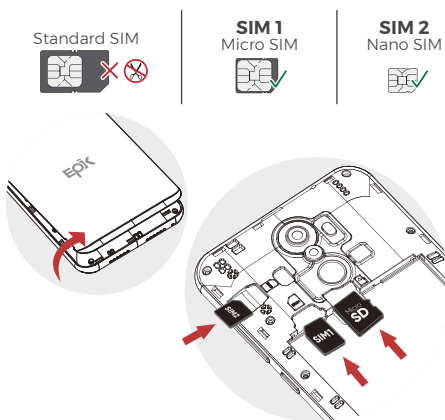
Visita epikmobile.com para una versión completa del manual de usuario.



### Tarjeta SIM y Tarjeta SD

#### Instalación de tarjetas SIM

- Retire con cuidado la cubierta trasera del teléfono.
- Inserte la tarjeta SIM deslizándola en la ranura SIM 1.
- Repita los pasos para la SIM 2 (Si está disponible).
- Inserte la tarjeta MicroSD deslizándola en la ranura asignada.
- Cuando termine, ponga de nuevo la cubierta trasera y encienda el dispositivo.



### Batería

Este teléfono cuenta con batería removible. Favor de cargar la batería completamente antes de utilizar el dispositivo (mín. 2 horas).



### Configurar conexión de Red Wi-Fi

Configuración > Conexiones inalámbricas y redes > WI-Fi > Seccionar red deseada, ingrese contraseña y conectar.



### Sensor de Huella Digital

Configuración > Seguridad > Huella Digital > Seguir instrucciones.



### Dual Trasera & Cámara Frontal

Disfruta de imágenes con mejor calidad con la cámara dual trasera y la cámara frontal, ambas con flash.



### Configuraciones

Acceda a más opciones de configuración en su dispositivo.

### ⚠ Instrucciones de Seguridad

- No hacer o recibir llamadas mientras conduce, y no escribir mensajes de texto mientras conduce.
- No utilizar el teléfono en las gasolineras.
- Mantenga su teléfono por lo menos a 15 mm de distancia de la oreja o el cuerpo mientras hace llamadas.
- Su teléfono puede producir una luz brillante o que parpadea.
- Las partes pequeñas pueden causar asfixia.
- Favor de no tirar la batería en el bote de basura. La eliminación adecuada de la batería ayudará a proteger el medio ambiente y la salud humana.
- El teléfono puede producir un sonido fuerte.
- Evite el contacto con campos de magnetismo.
- Mantener alejado de marcapasos y otros dispositivos médicos electrónicos.
- Evite temperaturas extremas.
- Apagar dispositivo en hospitales y otros centros médicos cuando sea requerido.
- Evitar el contacto con líquidos. Mantener el teléfono seco.
- Apagar dispositivo en aviones y aeropuertos cuando sea requerido.
- Favor de usar solo accesorios auténticos de Epik para este teléfono, y no utilizar la batería con ningún otro teléfono.
- No depender de su teléfono para llamadas de emergencia.

### 🌐 Vista nuestra página web

epikmobile.com

En esta página web puedes encontrar nuestras políticas de privacidad y condiciones de uso respecto a nuestros teléfonos, nuestra aplicación móvil Epik y nuestra página de internet (nuestros "Servicios"). Favor de tomar un momento para familiarizarse con nuestras prácticas de privacidad y uso. Cada vez que usted usa nuestros servicios, da consentimiento a las prácticas que aparecen en estas pólizas.

Este manual y el programa instalado del X572 están sujetos a cambios por parte de Epik One America Corporation sin previo aviso.

### **FCC Rules Compliance**

#### **(United States Federal Communications Commission)**

Any Changes or modifications not expressly approved by the party responsible for compliance could void the user's authority to operate the equipment.

This mobile phone complies with part 15 of the FCC Rules. Operation is subject to the following two conditions: (1) This device may not cause harmful interference, and (2) this device must accept any interference received, including interference that may cause undesired operation.

This mobile phone has been tested and found to comply with the limits for a Class B digital device, pursuant to Part 15 of the FCC Rules. These limits are designed to provide reasonable protection against harmful interference in a residential installation. This equipment generates uses and can radiate radio frequency energy and, if not installed and used in accordance with the instructions, may cause harmful interference to radio communications. However, there is no guarantee that interference will not occur in a particular installation if this equipment does cause harmful interference to radio or television reception, which can be determined by turning the equipment off and on, the user, is encouraged to try to correct the interference by one or more of the following measures:

- Reorient or relocate the receiving antenna.
- Increase the separation between the equipment and receiver.
- Connect the equipment into an outlet on a circuit different from that to which the receiver is connected.
- Consult the dealer or an experienced radio/TV technician for help.

### **RF Exposure Information (SAR)**

---

SAR tests are conducted using standard operating positions accepted by the FCC with the phone transmitting at its highest certified power level in all tested frequency bands, although the SAR is determined at the highest certified power level, the actual SAR level of the phone while operating can be well below the maximum value.

Before a new model phone is available for sale to the public, it must be tested and certified to the FCC that it does not exceed the exposure limit established by the FCC, tests for each phone are performed in positions and locations (e.g. at the ear and worn on the body) as required by the FCC.

For body worn operation, this phone has been tested and meets the FCC RF exposure guidelines for use with an accessory that contains no metal and the positions the handset a minimum of 1.0cm from the body. Use of other accessories may not ensure compliance with FCC RF exposure guidelines. If you do not use a body-worn accessory and are not holding the phone at the ear, position the handset a minimum of 10mm from your body when the phone is switched on.