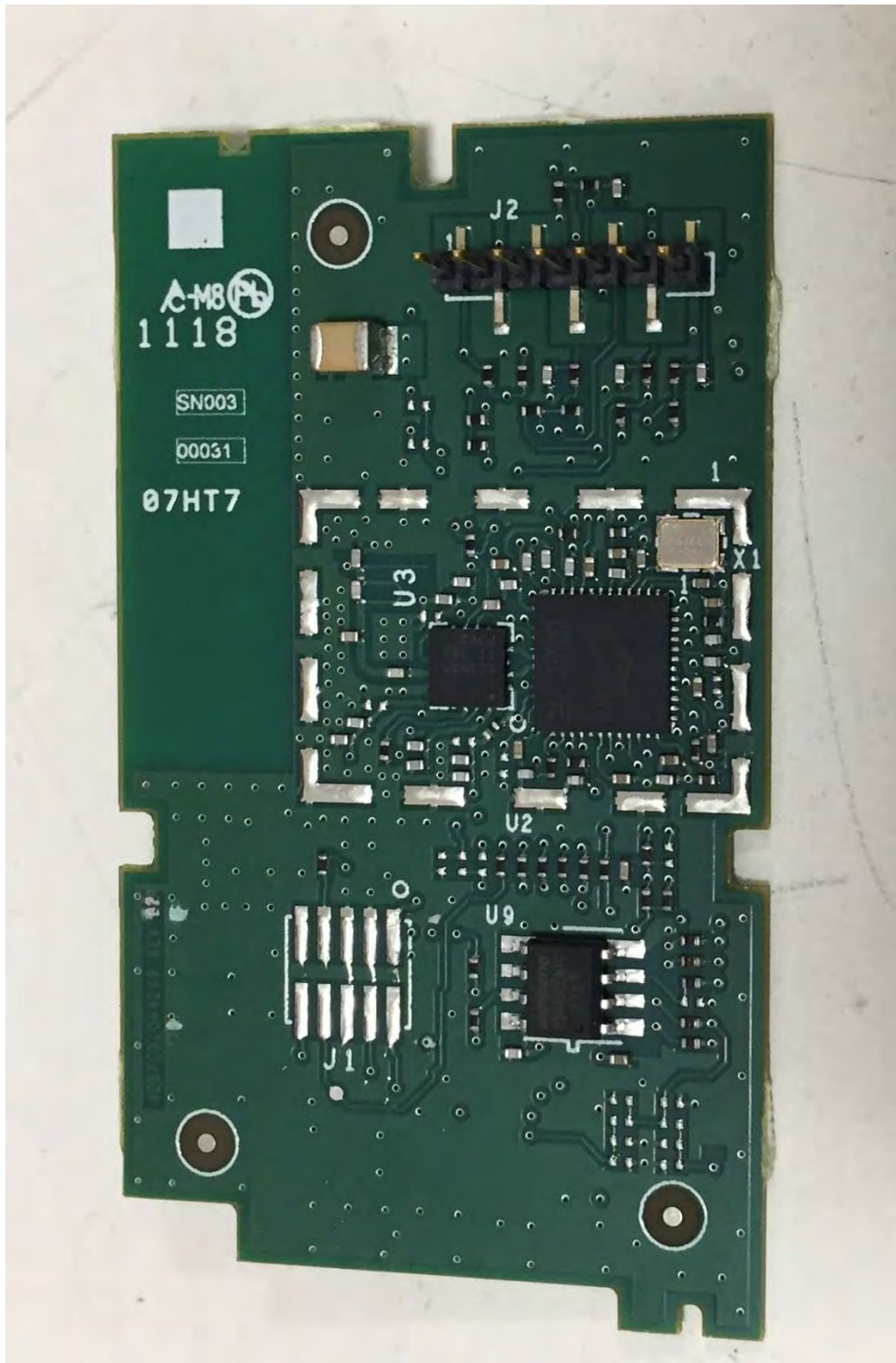
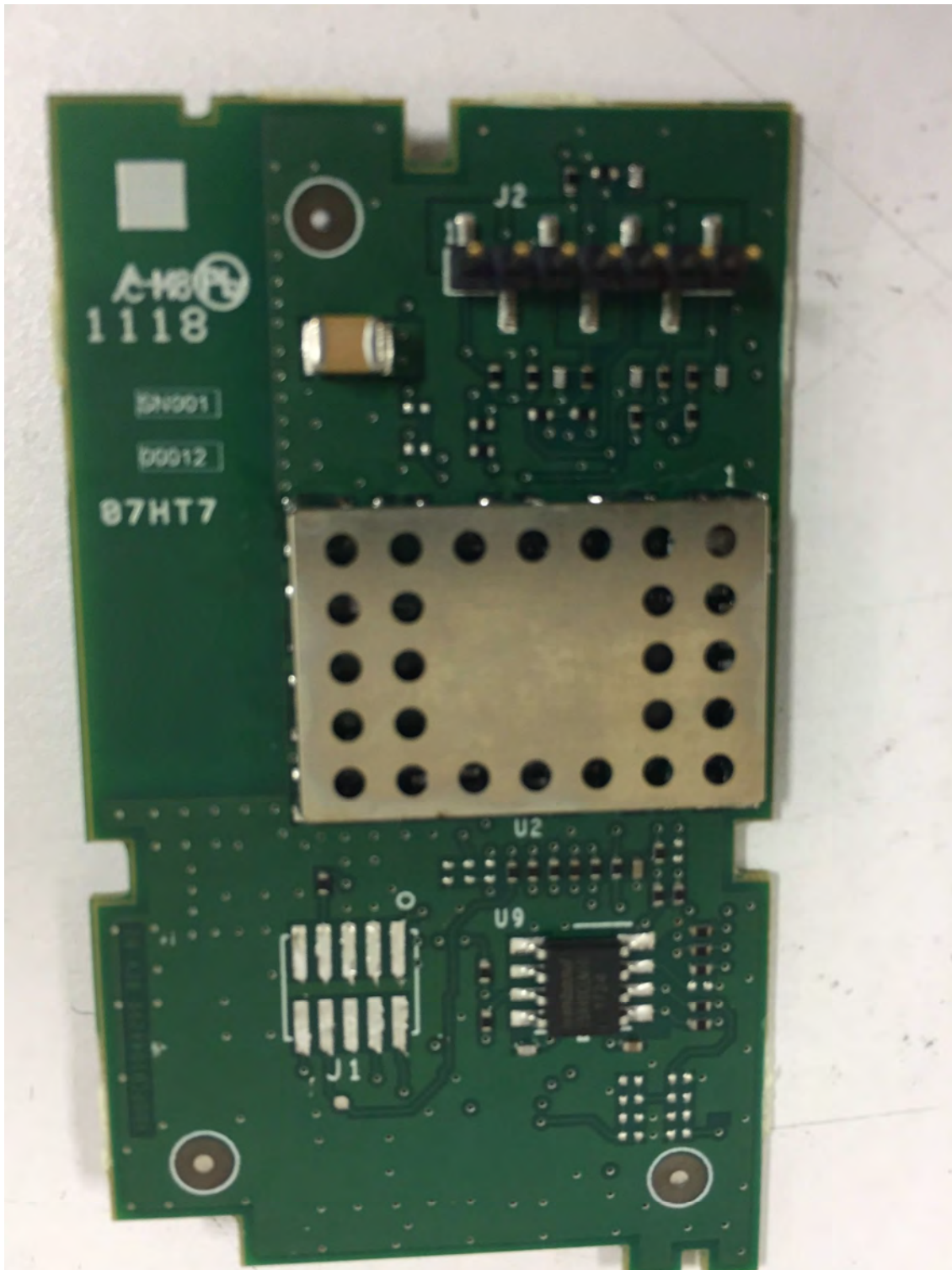


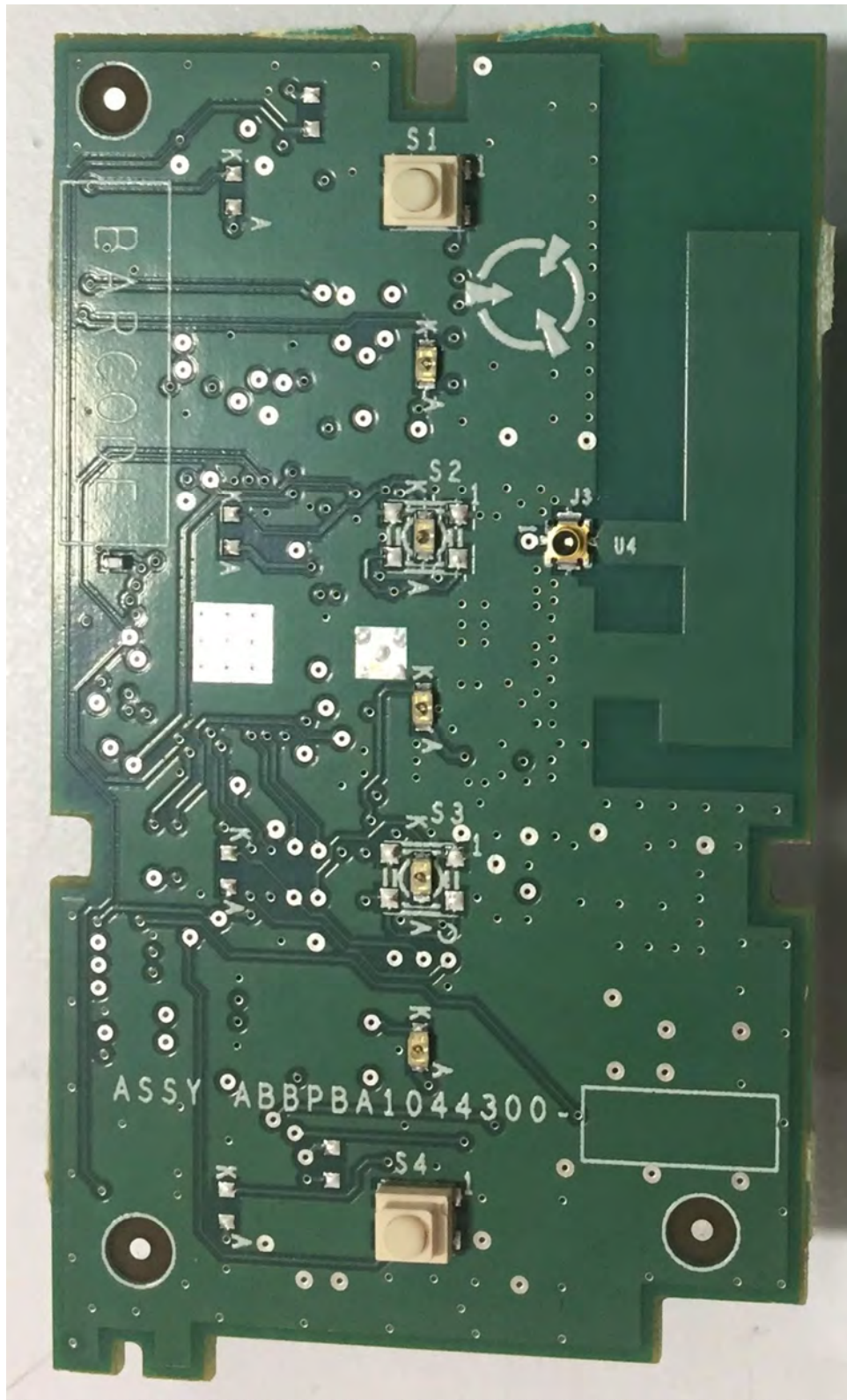
Internal Pictures for the In Wall Product Series



Common Logic Board – Bottom - No shield
(Bottom of the board is the same for Keypad Logic Board)



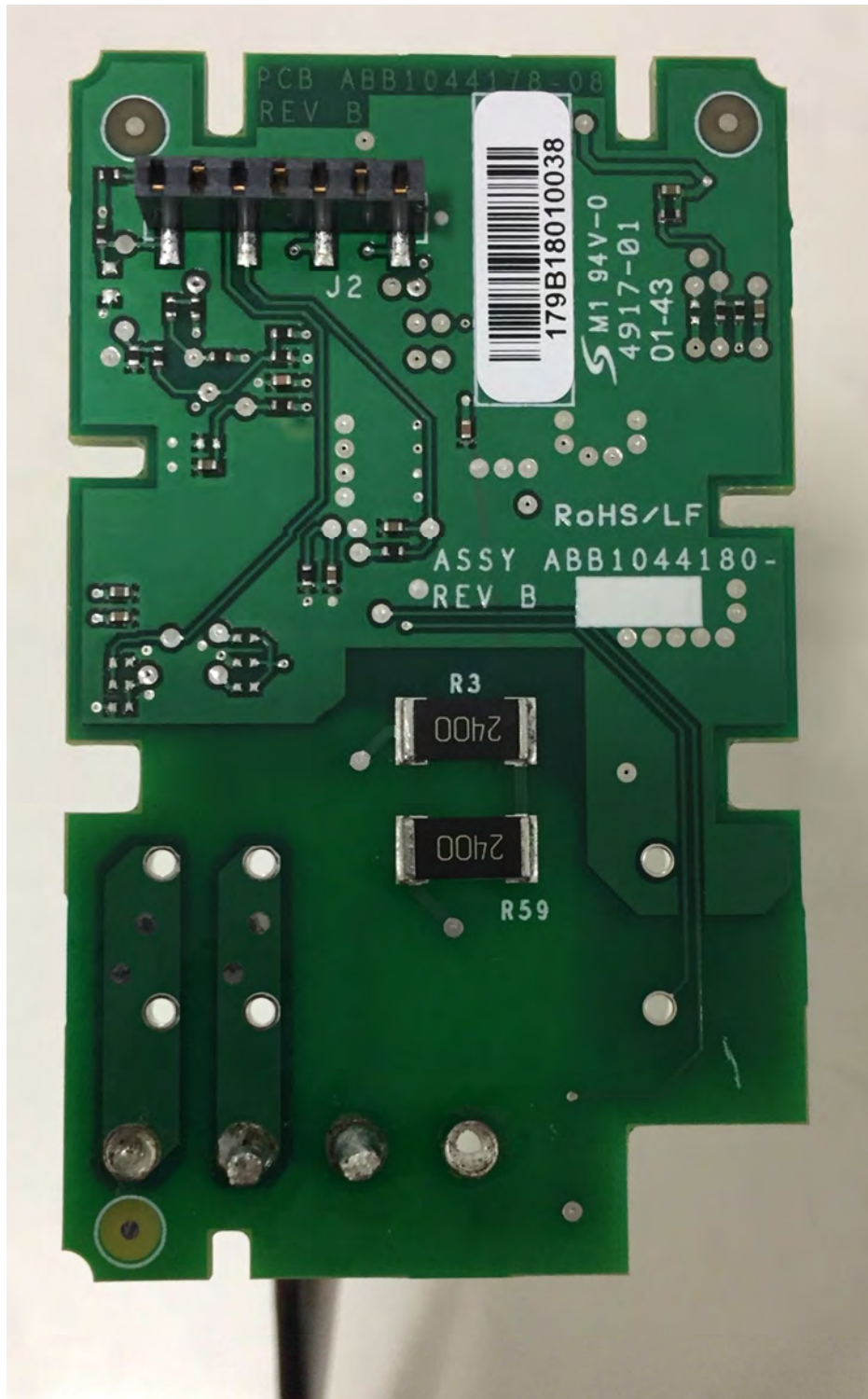
Common Logic Board – Bottom – with shield
(Bottom of the board is the same for Keypad Logic Board)



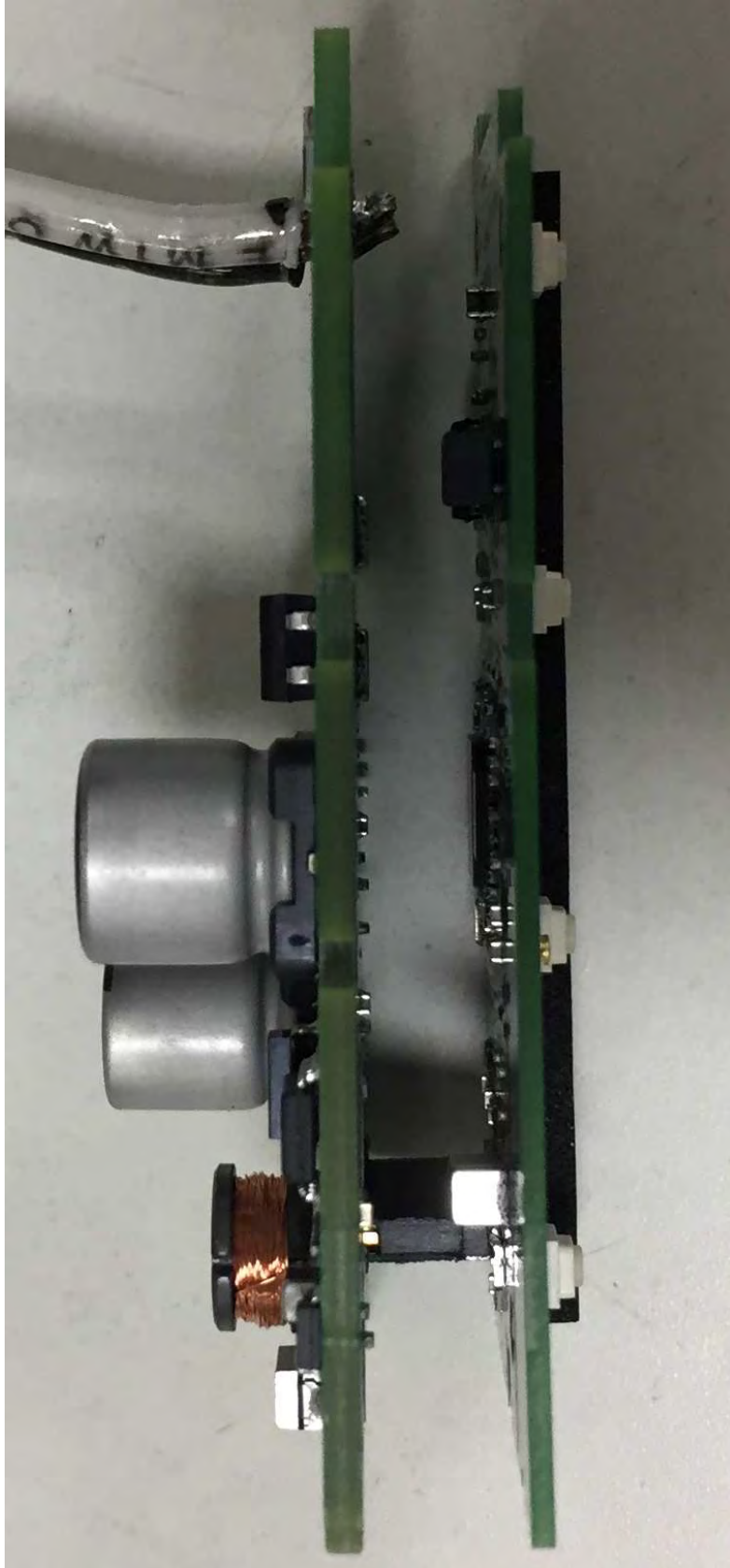
Common Logic Board - Top



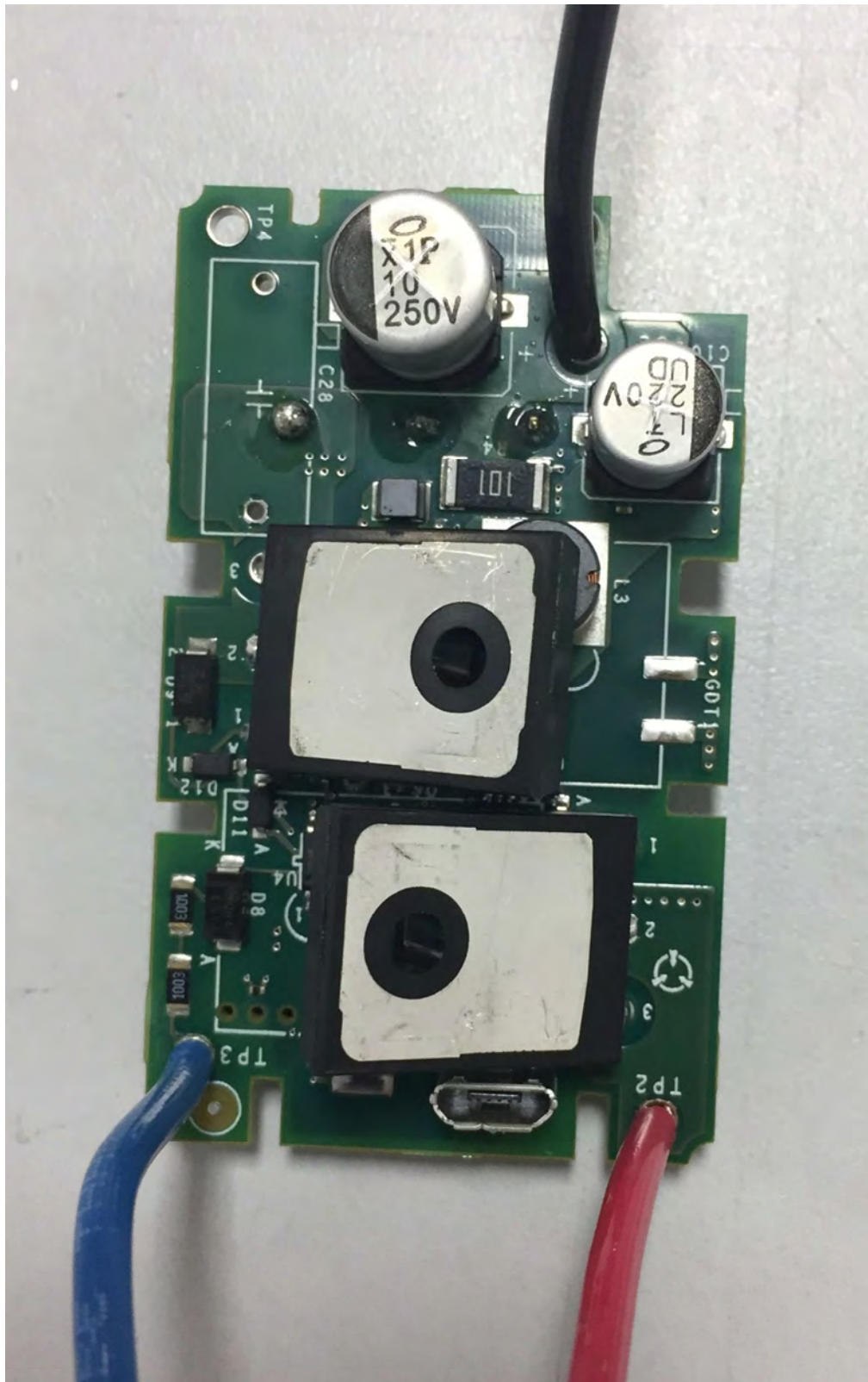
Keypad Logic Board – Top



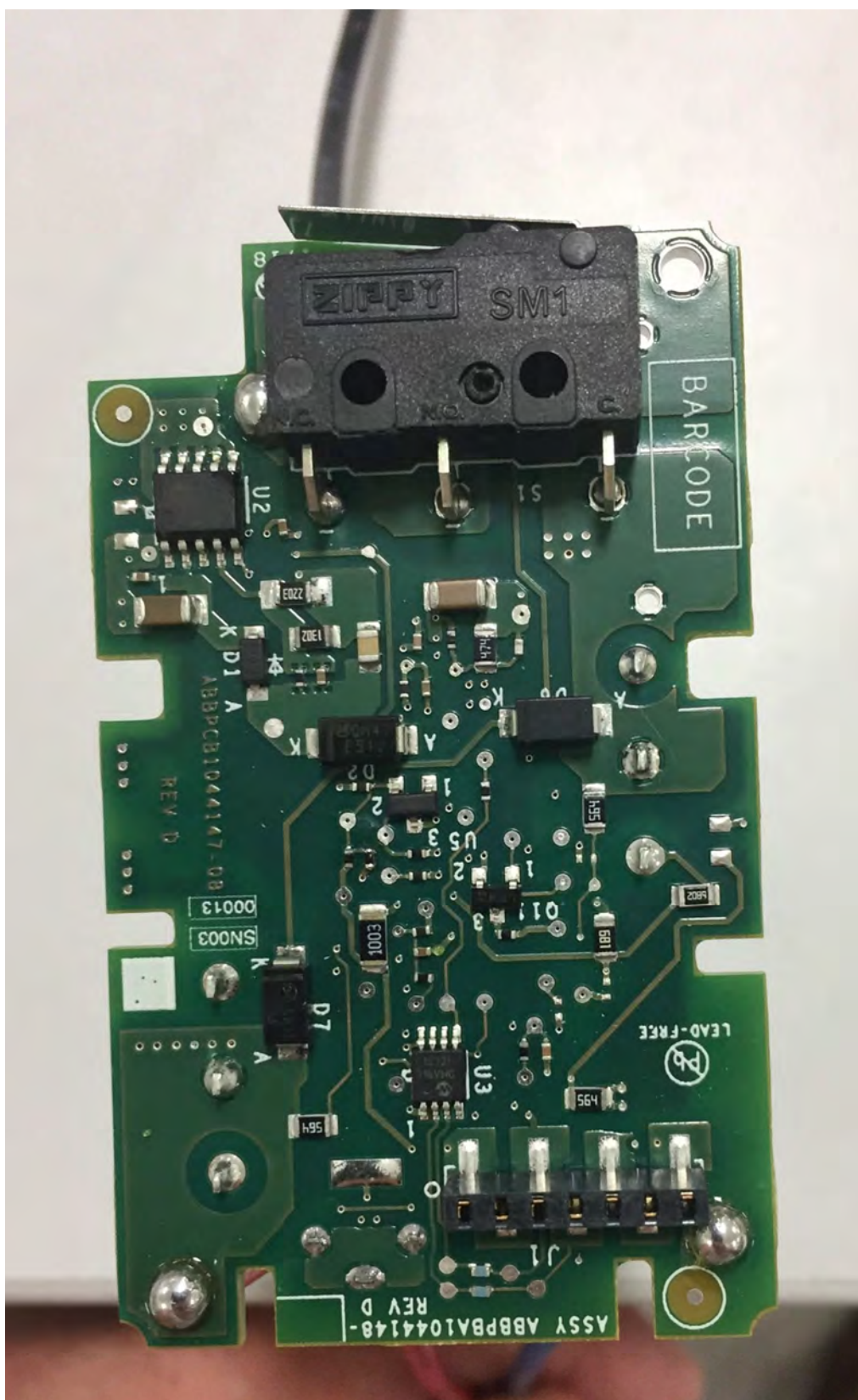
Keypad Power Board – Bottom



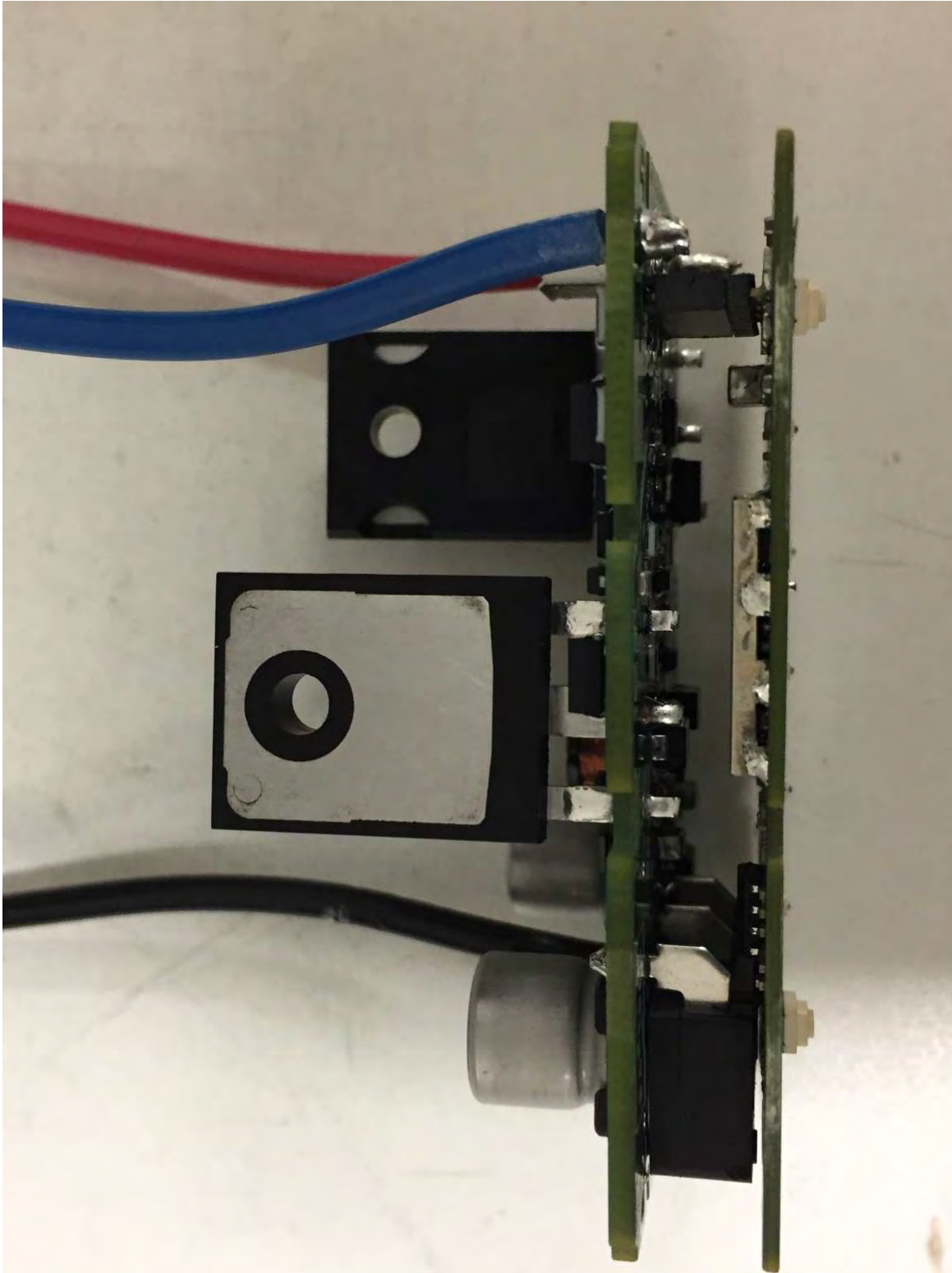
Keypad Power Board – Interconnect with logic board



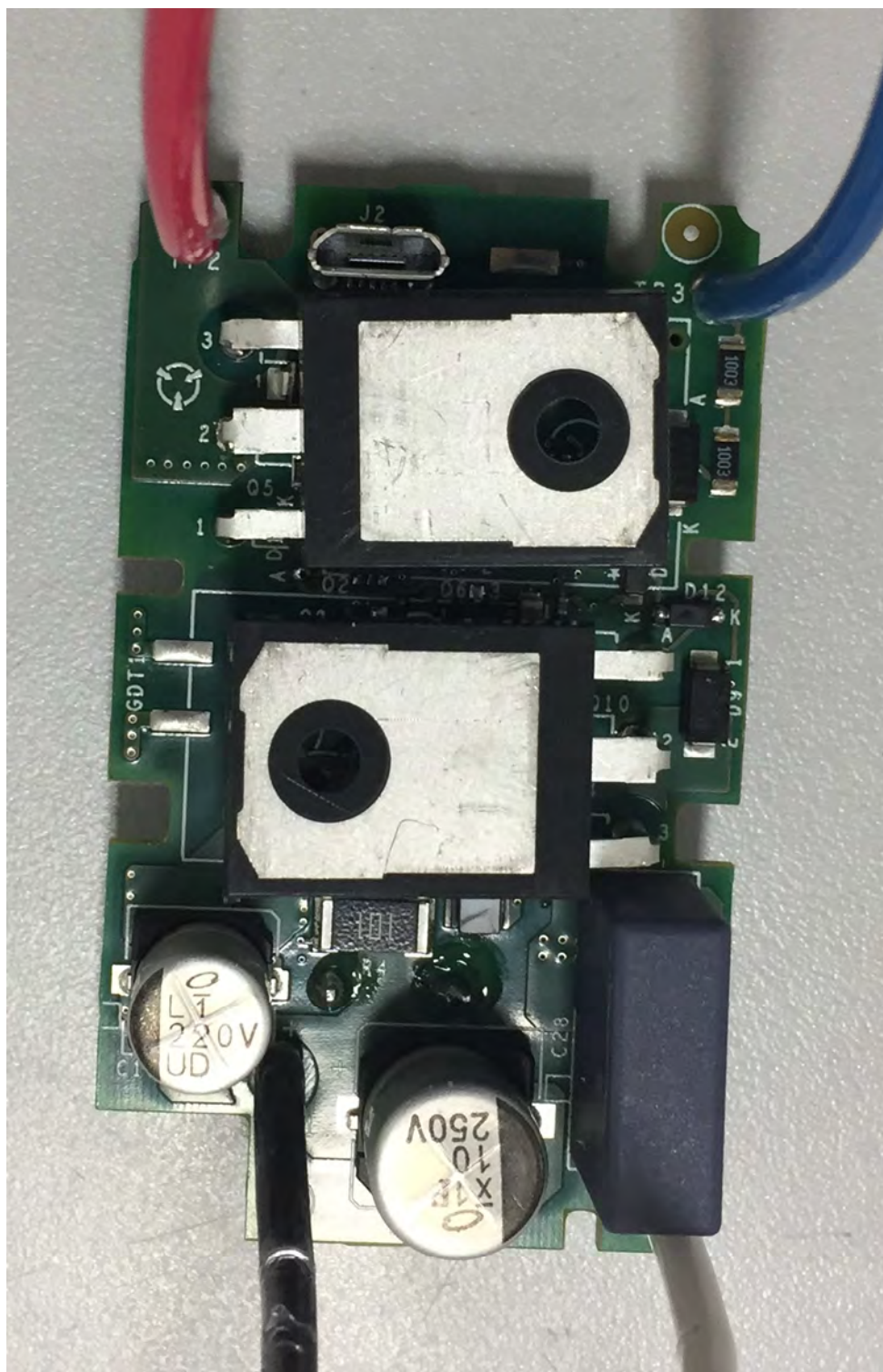
2 Wire Dimmer Power Board – Top



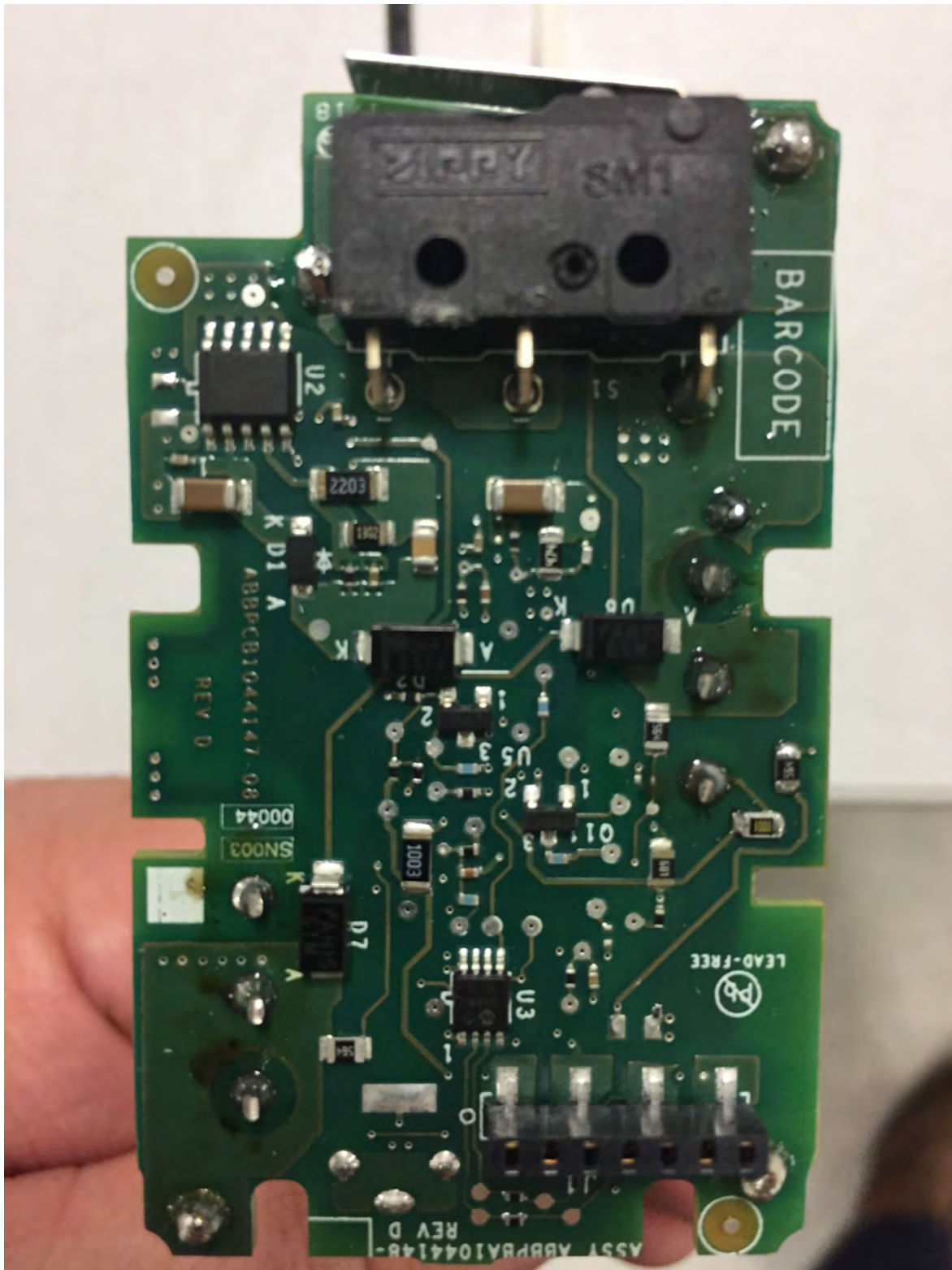
2 Wire Dimmer Power Board - Bottom



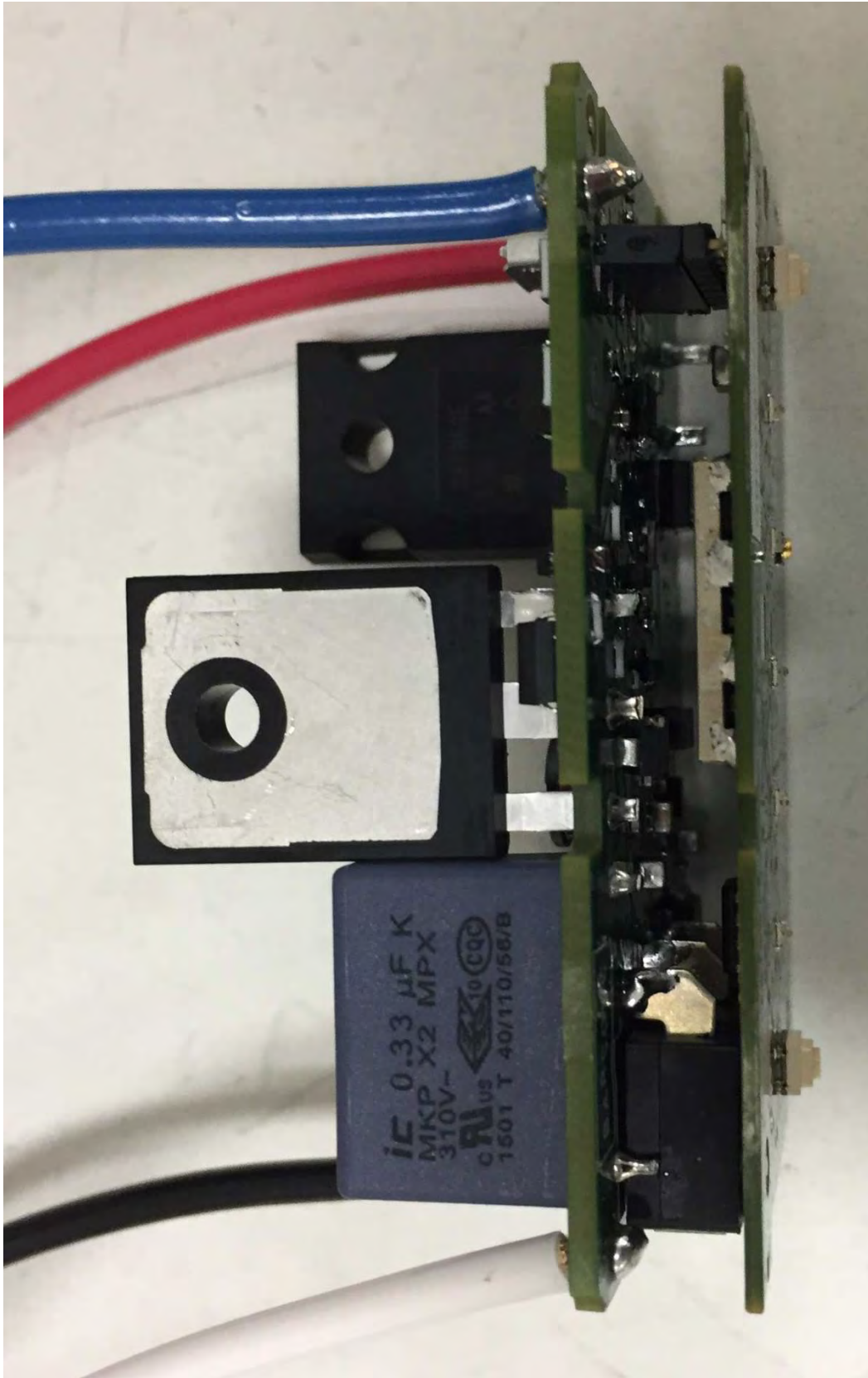
2 Wire Dimmer Power Board – Interconnect with Logic Board



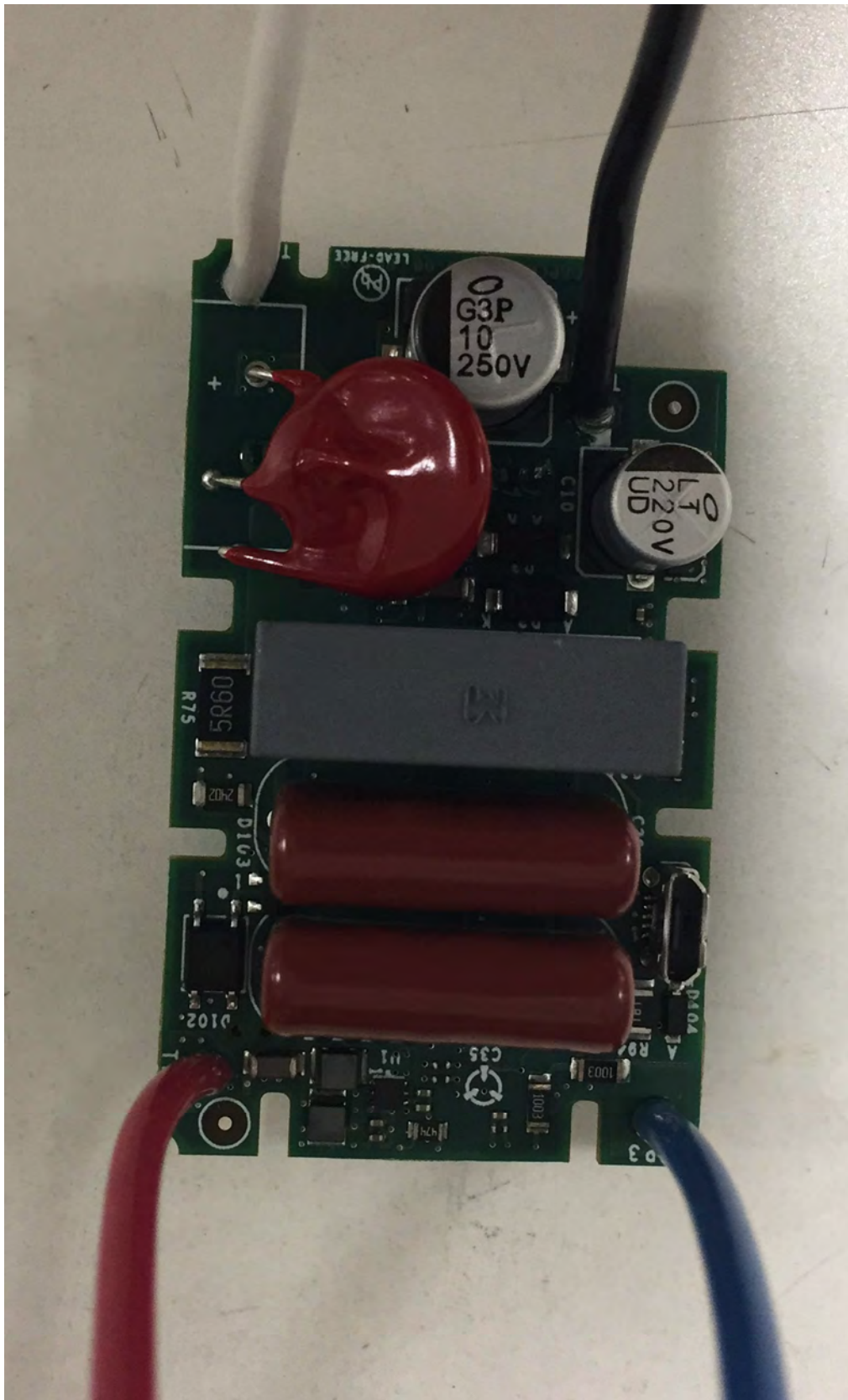
3 wire dimmer Power Board – Top



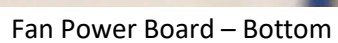
3 wire dimmer Power Board – Bottom



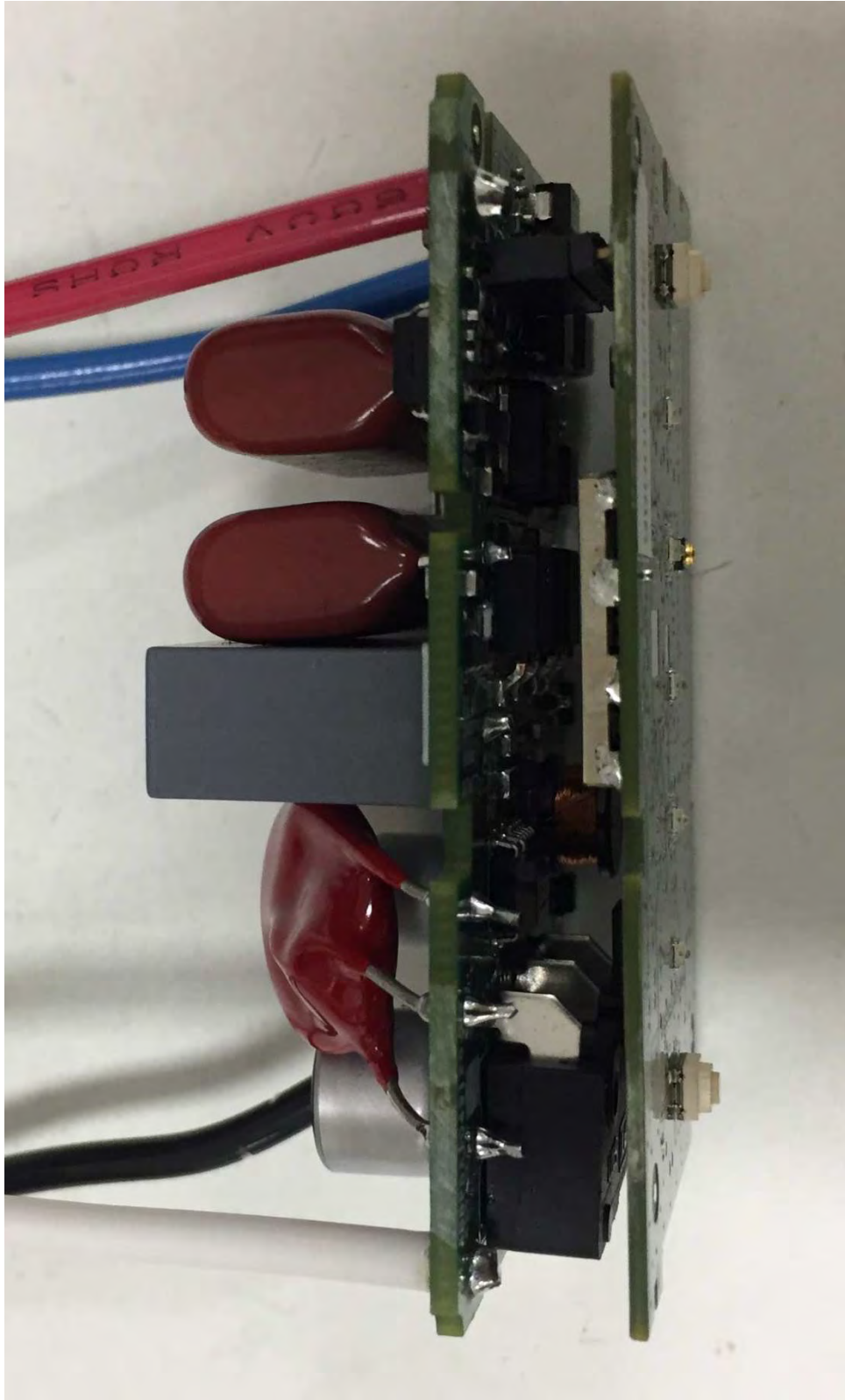
3 wire dimmer Power Board – Interconnect with Logic Board



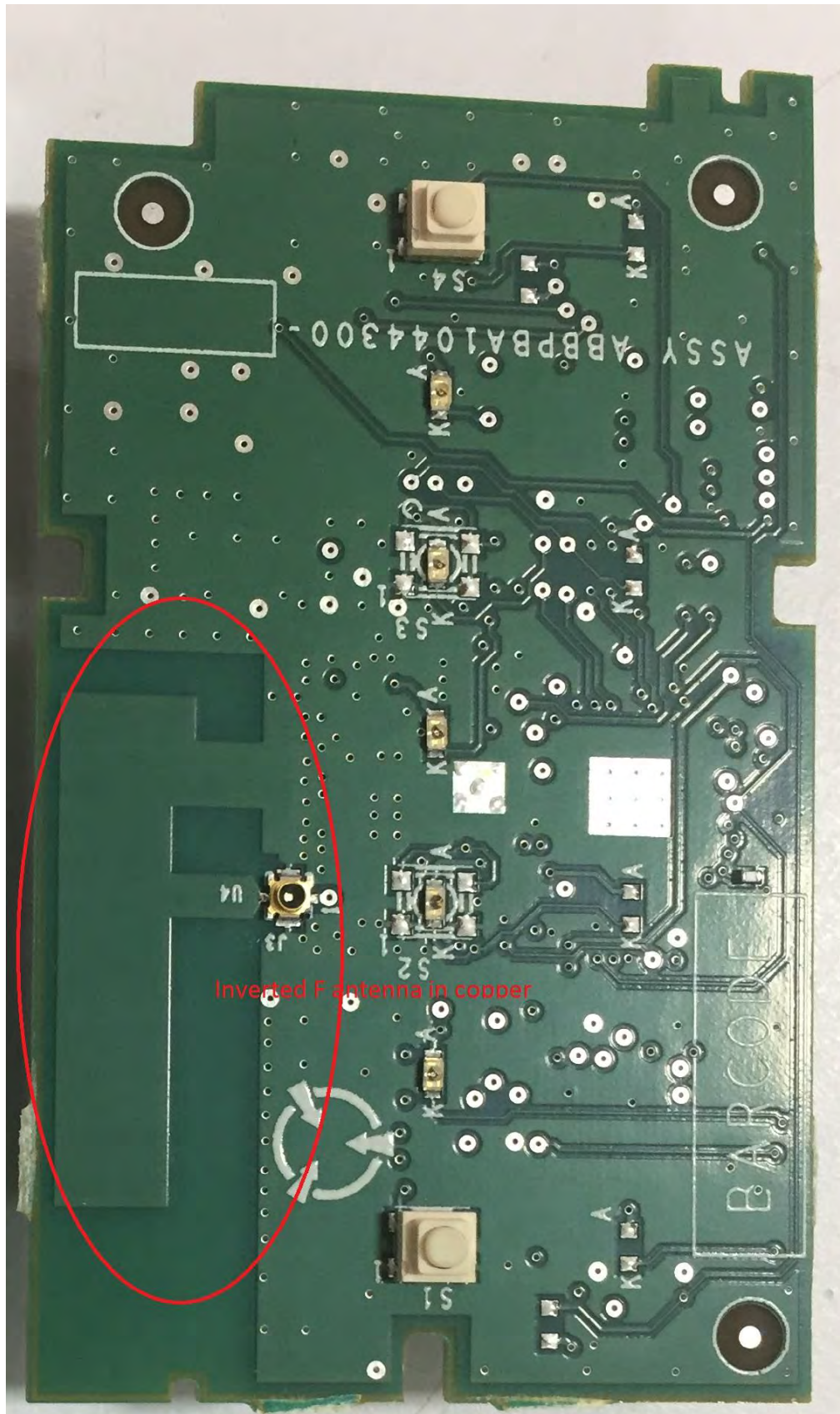
Fan Power Board – Top



Fan Power Board – Bottom



Fan Power Board – Interconnect with logic board



Omnidirectional Inverted-F antenna etched in copper on the PCB