

FCC REPORT

Applicant: Super BrightLEDs Inc
Address of Applicant: 4400 Earth City Expressway, Earth City, Missouri 63045, United States
Manufacturer/Factory: Super BrightLEDs Inc
Address of Manufacturer/Factory: 4400 Earth City Expressway, Earth City, Missouri 63045, United States
Equipment Under Test (EUT)
Product Name: 2.4G Wireless remote controller
Model No.: LPD-TWHR
FCC ID: 2AO5Z-LPD-TWHR
Applicable standards: FCC CFR Title 47 Part 15 Subpart C Section 15.247
Date of sample receipt: July 16, 2018
Date of Test: July 17-25, 2018
Date of report issued: July 26, 2018
Test Result : PASS *

* In the configuration tested, the EUT complied with the standards specified above.

Authorized Signature:




Robinson Lo
Laboratory Manager

This results shown in this test report refer only to the sample(s) tested, this test report cannot be reproduced, except in full, without prior written permission of the company. The report would be invalid without specific stamp of test institute and the signatures of compiler and approver.

2 Version

| Version No. | Date | Description |
|-------------|---------------|-------------|
| 00 | July 26, 2018 | Original |
| | | |
| | | |
| | | |
| | | |

Prepared By:

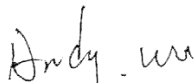


Date:

July 26, 2018

Project Engineer

Check By:



Date:

July 26, 2018

Reviewer

3 Contents

| | Page |
|---|------|
| 1 COVER PAGE | 1 |
| 2 VERSION | 2 |
| 3 CONTENTS | 3 |
| 4 TEST SUMMARY | 4 |
| 4.1 MEASUREMENT UNCERTAINTY | 4 |
| 5 GENERAL INFORMATION | 5 |
| 5.1 GENERAL DESCRIPTION OF EUT | 5 |
| 5.2 TEST MODE | 7 |
| 5.3 DESCRIPTION OF SUPPORT UNITS | 7 |
| 5.4 TEST FACILITY | 7 |
| 5.5 TEST LOCATION | 7 |
| 6 TEST INSTRUMENTS LIST | 8 |
| 7 TEST RESULTS AND MEASUREMENT DATA | 10 |
| 7.1 ANTENNA REQUIREMENT | 10 |
| 7.2 CONDUCTED PEAK OUTPUT POWER | 11 |
| 7.3 CHANNEL BANDWIDTH | 13 |
| 7.4 POWER SPECTRAL DENSITY | 15 |
| 7.5 BAND EDGES | 17 |
| 7.5.1 Conducted Emission Method | 17 |
| 7.5.2 Radiated Emission Method | 19 |
| 7.6 SPURIOUS EMISSION | 22 |
| 7.6.1 Conducted Emission Method | 22 |
| 7.6.2 Radiated Emission Method | 24 |
| 8 TEST SETUP PHOTO | 32 |
| 9 EUT CONSTRUCTIONAL DETAILS | 33 |

4 Test Summary

| Test Item | Section in CFR 47 | Result |
|----------------------------------|-------------------|--------|
| Antenna requirement | 15.203/15.247 (c) | Pass |
| AC Power Line Conducted Emission | 15.207 | N/A |
| Conducted Peak Output Power | 15.247 (b)(3) | Pass |
| Channel Bandwidth | 15.247 (a)(2) | Pass |
| Power Spectral Density | 15.247 (e) | Pass |
| Band Edge | 15.247(d) | Pass |
| Spurious Emission | 15.205/15.209 | Pass |

Pass: The EUT complies with the essential requirements in the standard.

Remark : Test according to ANSI C63.10:2013

N/A means not applicable.

4.1 Measurement Uncertainty

| Test Item | Frequency Range | Measurement Uncertainty | Notes |
|----------------------------------|-----------------|-------------------------|-------|
| Radiated Emission | 9kHz ~ 30MHz | ± 4.34dB | (1) |
| Radiated Emission | 30MHz ~ 1000MHz | ± 4.24dB | (1) |
| Radiated Emission | 1GHz ~ 26.5GHz | ± 4.68dB | (1) |
| AC Power Line Conducted Emission | 0.15MHz ~ 30MHz | ± 3.45dB | (1) |

Note (1): The measurement uncertainty is for coverage factor of k=2 and a level of confidence of 95%.

5 General Information

5.1 General Description of EUT

| | |
|----------------------|-------------------------------------|
| Product Name: | 2.4G Wireless remote controller |
| Model No.: | LPD-TWHR |
| Serial No.: | 80020180503 |
| Test sample(s) ID: | GTS201803000255-1 |
| Sample(s) Status | Engineer sample |
| Hardware Version: | V03 |
| Software Version: | V2.0 |
| Operation Frequency: | 2405MHz~2480MHz |
| Channel numbers: | 16 |
| Channel separation: | 5MHz |
| Modulation type: | FSK |
| Antenna Type: | Internal Antenna |
| Antenna gain: | 1.5dBi(Declared by applicant) |
| Power supply: | DC3.0V (2 x 1.5V"AAA" Size battery) |

| Operation Frequency each of channel | | | | | | | |
|-------------------------------------|-----------|---------|-----------|---------|-----------|---------|-----------|
| Channel | Frequency | Channel | Frequency | Channel | Frequency | Channel | Frequency |
| 1 | 2405MHz | 5 | 2425MHz | 9 | 2445MHz | 13 | 2465MHz |
| 2 | 2410MHz | 6 | 2430MHz | 10 | 2450MHz | 14 | 2470MHz |
| 3 | 2415MHz | 7 | 2435MHz | 11 | 2455MHz | 15 | 2475MHz |
| 4 | 2420MHz | 8 | 2440MHz | 12 | 2460MHz | 16 | 2480 MHz |

Note:

In section 15.31(m), regards to the operating frequency range over 10 MHz, the Lowest frequency, the middle frequency, and the highest frequency of channel were selected to perform the test, and the selected channel see below:

| Channel | Frequency |
|---------------------|-----------|
| The lowest channel | 2405MHz |
| The middle channel | 2440MHz |
| The Highest channel | 2480MHz |

5.2 Test mode

| | |
|--|---|
| Transmitting mode | Keep the EUT in continuously transmitting mode. |
| <i>Remark: During the test, the test voltage was tuned from 85% to 115% of the nominal rated supply voltage, and found that the worst case was under the nominal rated supply condition. So the report just shows that condition's data.</i> | |

5.3 Description of Support Units

| |
|-------|
| None. |
|-------|

5.4 Test Facility

| |
|--|
| <p>The test facility is recognized, certified, or accredited by the following organizations:</p> <ul style="list-style-type: none">● FCC —Registration No.: 381383 Global United Technology Services Co., Ltd., Shenzhen EMC Laboratory has been registered and fully described in a report filed with the (FCC) Federal Communications Commission. The acceptance letter from the FCC is maintained in files. Registration 381383, January 08, 2018● Industry Canada (IC) —Registration No.: 9079A-2 The 3m Semi-anechoic chamber of Global United Technology Services Co., Ltd. has been registered by Certification and Engineering Bureau of Industry Canada for radio equipment testing with Registration No.: 9079A-2, August 15, 2016. |
|--|

5.5 Test Location

| |
|---|
| All tests were performed at: |
| Global United Technology Services Co., Ltd. Address: No. 301-309, 3/F., Jinyuan Business Building, No.2, Laodong Industrial Zone, Xixiang Road, Baoan District, Shenzhen, Guangdong, China Tel: 0755-27798480 Fax: 0755-27798960 |

6 Test Instruments list

| Radiated Emission: | | | | | | |
|--------------------|-------------------------------------|--------------------------------|-----------------------------|---------------|---------------------|-------------------------|
| Item | Test Equipment | Manufacturer | Model No. | Inventory No. | Cal.Date (mm-dd-yy) | Cal.Due date (mm-dd-yy) |
| 1 | 3m Semi- Anechoic Chamber | ZhongYu Electron | 9.2(L)*6.2(W)* 6.4(H) | GTS250 | July. 03 2015 | July. 02 2020 |
| 2 | Control Room | ZhongYu Electron | 6.2(L)*2.5(W)* 2.4(H) | GTS251 | N/A | N/A |
| 3 | EMI Test Receiver | Rohde & Schwarz | ESU26 | GTS203 | June. 27 2018 | June. 26 2019 |
| 4 | BiConiLog Antenna | SCHWARZBECK MESS-ELEKTRONIK | VULB9163 | GTS214 | June. 27 2018 | June. 26 2019 |
| 5 | Double -ridged waveguide horn | SCHWARZBECK MESS-ELEKTRONIK | 9120D-829 | GTS208 | June. 27 2018 | June. 26 2019 |
| 6 | Horn Antenna | ETS-LINDGREN | 3160 | GTS217 | June. 27 2018 | June. 26 2019 |
| 7 | EMI Test Software | AUDIX | E3 | N/A | N/A | N/A |
| 8 | Coaxial Cable | GTS | N/A | GTS213 | June. 27 2018 | June. 26 2019 |
| 9 | Coaxial Cable | GTS | N/A | GTS211 | June. 27 2018 | June. 26 2019 |
| 10 | Coaxial cable | GTS | N/A | GTS210 | June. 27 2018 | June. 26 2019 |
| 11 | Coaxial Cable | GTS | N/A | GTS212 | June. 27 2018 | June. 26 2019 |
| 12 | Amplifier(100kHz-3GHz) | HP | 8347A | GTS204 | June. 27 2018 | June. 26 2019 |
| 13 | Amplifier(2GHz-20GHz) | HP | 8349B | GTS206 | June. 27 2018 | June. 26 2019 |
| 14 | Amplifier (18-26GHz) | Rohde & Schwarz | AFS33-18002 650-30-8P-44 | GTS218 | June. 27 2018 | June. 26 2019 |
| 15 | Band filter | Amindeon | 82346 | GTS219 | June. 27 2018 | June. 26 2019 |
| 16 | Power Meter | Anritsu | ML2495A | GTS540 | June. 27 2018 | June. 26 2019 |
| 17 | Power Sensor | Anritsu | MA2411B | GTS541 | June. 27 2018 | June. 26 2019 |
| 18 | Wideband Radio Communication Tester | Rohde & Schwarz | CMW500 | GTS588 | June. 27 2018 | June. 26 2019 |
| 19 | Splitter | Agilent | 11636B | GTS237 | June. 27 2018 | June. 26 2019 |
| 20 | Loop Antenna | ZHINAN | ZN30900A | GTS534 | June. 27 2018 | June. 26 2019 |

| Conducted: | | | | | | |
|-------------------|--|---------------------|------------------|-------------------|--------------------------------|------------------------------------|
| Item | Test Equipment | Manufacturer | Model No. | Serial No. | Cal.Date (mm-dd-yy) | Cal.Due date (mm-dd-yy) |
| 1 | MXA Signal Analyzer | Agilent | N9020A | GTS566 | June. 27 2018 | June. 26 2019 |
| 2 | EMI Test Receiver | R&S | ESCI 7 | GTS552 | June. 27 2018 | June. 26 2019 |
| 3 | Spectrum Analyzer | Agilent | E4440A | GTS533 | June. 27 2018 | June. 26 2019 |
| 4 | MXG vector Signal Generator | Agilent | N5182A | GTS567 | June. 27 2018 | June. 26 2019 |
| 5 | ESG Analog Signal Generator | Agilent | E4428C | GTS568 | June. 27 2018 | June. 26 2019 |
| 6 | USB RF Power Sensor | DARE | RPR3006W | GTS569 | June. 27 2018 | June. 26 2019 |
| 7 | RF Switch Box | Shongyi | RFSW3003328 | GTS571 | June. 27 2018 | June. 26 2019 |
| 8 | EMI Test Receiver | R&S | ESCI 7 | GTS552 | June. 27 2018 | June. 26 2019 |
| 9 | Programmable Constant Temp & Humi Test Chamber | WEWON | WHTH-150L-40-880 | GTS572 | June. 27 2018 | June. 26 2019 |

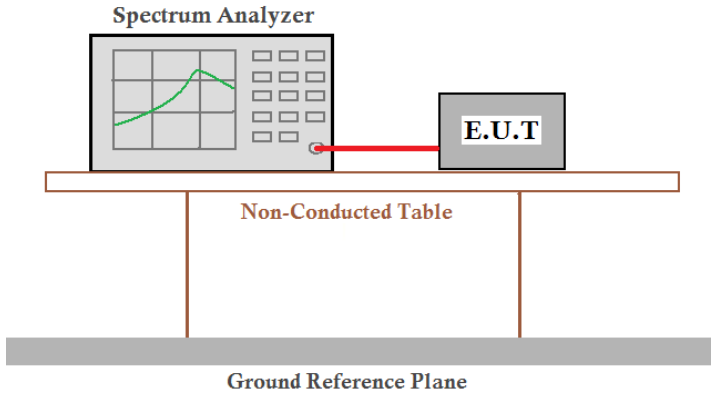
| General used equipment: | | | | | | |
|--------------------------------|-----------------------|---------------------|------------------|----------------------|--------------------------------|------------------------------------|
| Item | Test Equipment | Manufacturer | Model No. | Inventory No. | Cal.Date (mm-dd-yy) | Cal.Due date (mm-dd-yy) |
| 1 | Barometer | ChangChun | DYM3 | GTS257 | June 27 2018 | June 26 2019 |

7 Test results and Measurement Data

7.1 Antenna requirement

| | |
|--|-------------------------------------|
| Standard requirement: | FCC Part15 C Section 15.203 /247(c) |
| <p>15.203 requirement:</p> <p>An intentional radiator shall be designed to ensure that no antenna other than that furnished by the responsible party shall be used with the device. The use of a permanently attached antenna or of an antenna that uses a unique coupling to the intentional radiator, the manufacturer may design the unit so that a broken antenna can be replaced by the user, but the use of a standard antenna jack or electrical connector is prohibited.</p> <p>15.247(c) (1)(i) requirement:</p> <p>(i) Systems operating in the 2400-2483.5 MHz band that is used exclusively for fixed. Point-to-point operations may employ transmitting antennas with directional gain greater than 6dBi provided the maximum conducted output power of the intentional radiator is reduced by 1 dB for every 3 dB that the directional gain of the antenna exceeds 6dBi.</p> | |
| EUT Antenna: | |
| <p><i>The antenna is Internal antenna, the best case gain of the antenna is 1.5dBi</i></p>  | |

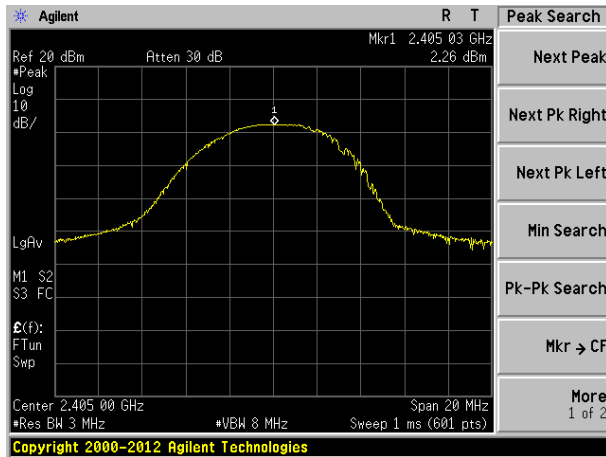
7.2 Conducted Peak Output Power

| | |
|-------------------|---|
| Test Requirement: | FCC Part15 C Section 15.247 (b)(3) |
| Test Method: | ANSI C63.10:2013 and KDB558074 D01 DTS Meas Guidance V04 |
| Limit: | 30dBm |
| Test setup: |  <p>The diagram illustrates the test setup. A Spectrum Analyzer is connected to an E.U.T. (Equipment Under Test) via a red cable. Both are placed on a Non-Conducted Table, which is supported by a Ground Reference Plane.</p> |
| Test Instruments: | Refer to section 6.0 for details |
| Test mode: | Refer to section 5.2 for details |
| Test results: | Pass |

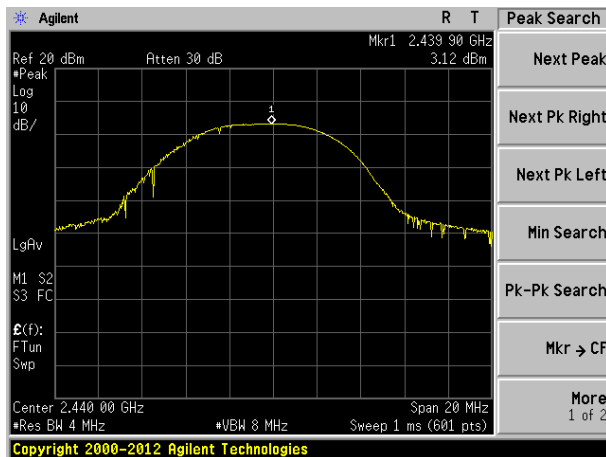
Measurement Data

| Frequency (MHz) | Peak Output Power (dBm) | Limit(dBm) | Result |
|-----------------|-------------------------|------------|--------|
| 2405 | 2.26 | 30 | PASS |
| 2440 | 3.12 | | |
| 2480 | 3.80 | | |

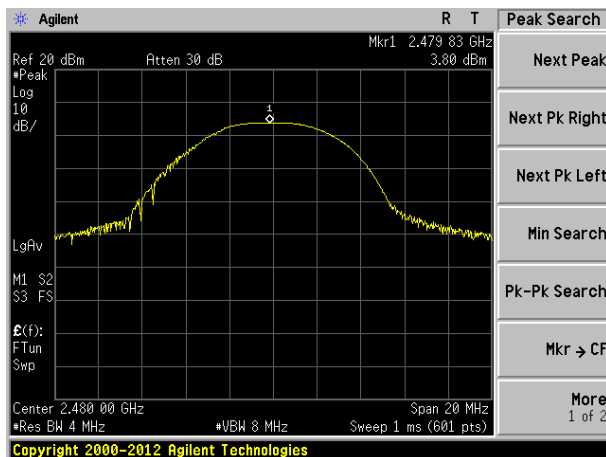
Test plot as follows:



2405MHz

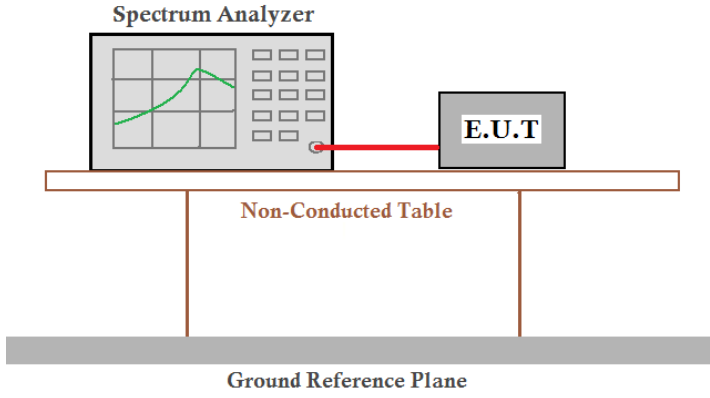


2440MHz



2480MHz

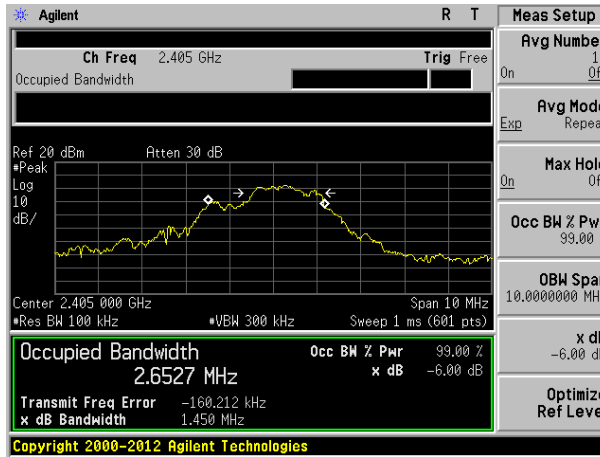
7.3 Channel Bandwidth

| | |
|-------------------|---|
| Test Requirement: | FCC Part15 C Section 15.247 (a)(2) |
| Test Method: | ANSI C63.10:2013 and KDB558074 D01 DTS Meas Guidance V04 |
| Limit: | >500KHz |
| Test setup: |  <p>The diagram illustrates the test setup. A Spectrum Analyzer is connected to an E.U.T. (Equipment Under Test) via a red cable. Both are placed on a Non-Conducted Table, which is supported by a Ground Reference Plane.</p> |
| Test Instruments: | Refer to section 6.0 for details |
| Test mode: | Refer to section 5.2 for details |
| Test results: | Pass |

Measurement Data

| Frequency (MHz) | Channel Bandwidth (MHz) | Limit(KHz) | Result |
|-----------------|-------------------------|------------|--------|
| 2405 | 1.450 | >500 | Pass |
| 2440 | 0.953 | | |
| 2480 | 1.425 | | |

Test plot as follows:



2405MHz

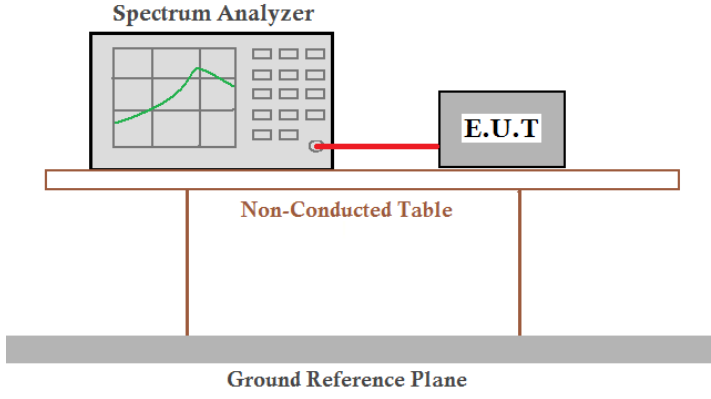


2440MHz



2480MHz

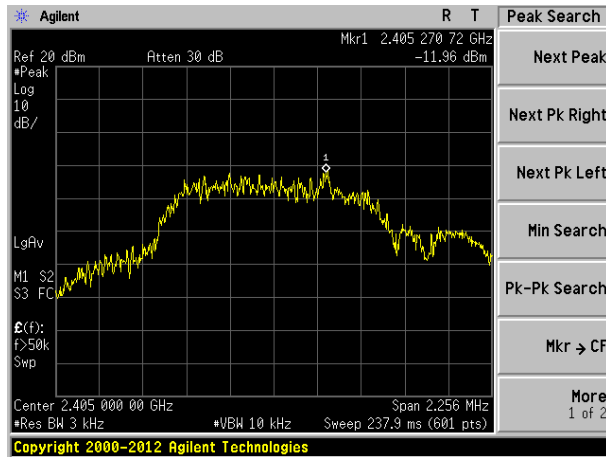
7.4 Power Spectral Density

| | |
|-------------------|---|
| Test Requirement: | FCC Part15 C Section 15.247 (e) |
| Test Method: | ANSI C63.10:2013 and KDB558074 D01 DTS Meas Guidance V04 |
| Limit: | 8dBm/3kHz |
| Test setup: |  <p>The diagram illustrates the test setup. A Spectrum Analyzer is connected to an E.U.T. (Equipment Under Test) via a red cable. Both are placed on a Non-Conducted Table, which is supported by a Ground Reference Plane.</p> |
| Test Instruments: | Refer to section 6.0 for details |
| Test mode: | Refer to section 5.2 for details |
| Test results: | Pass |

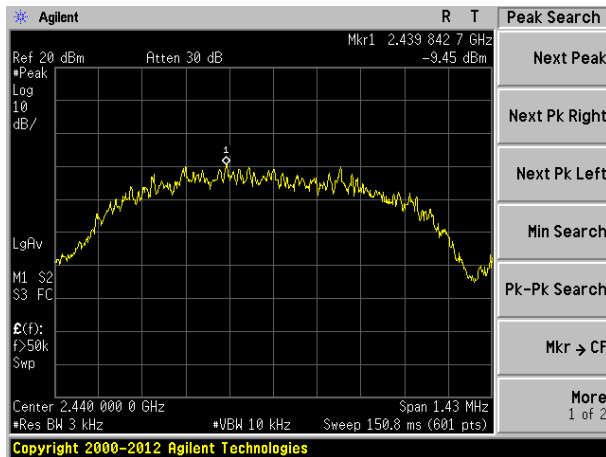
Measurement Data

| Frequency (MHz) | Power Spectral Density (dBm) | Limit (dBm/3kHz) | Result |
|-----------------|------------------------------|------------------|--------|
| 2405 | -11.96 | 8.00 | Pass |
| 2440 | -9.45 | | |
| 2480 | -8.97 | | |

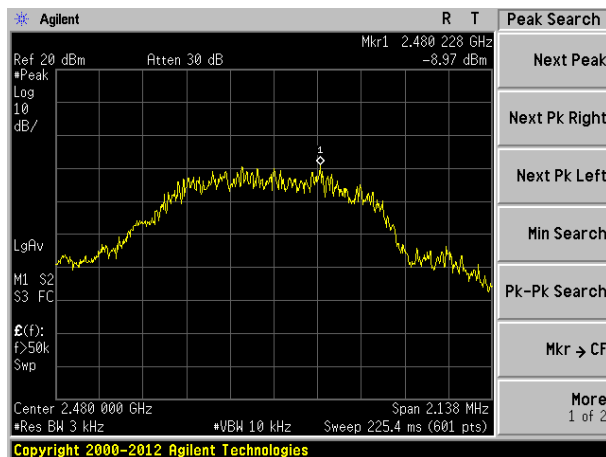
Test plot as follows:



2405MHz



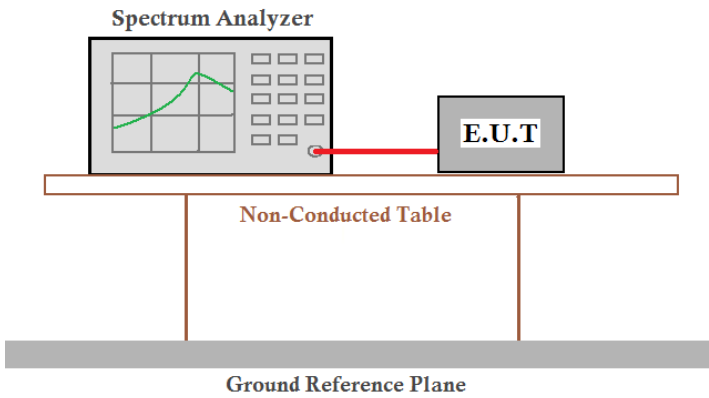
2440MHz



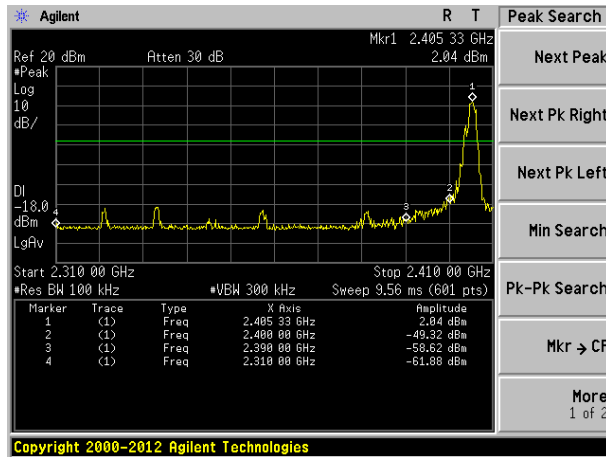
2480MHz

7.5 Band edges

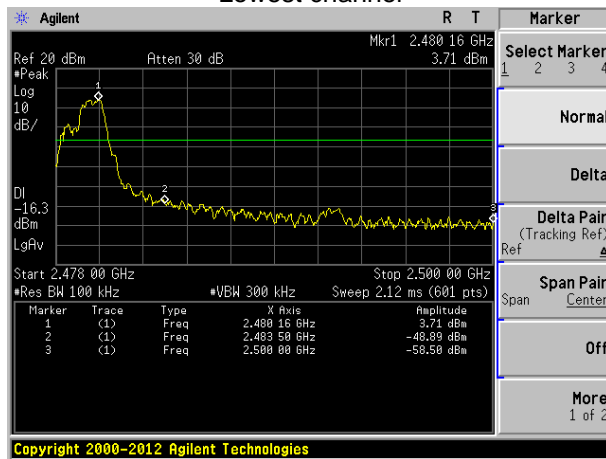
7.5.1 Conducted Emission Method

| | |
|-------------------|---|
| Test Requirement: | FCC Part15 C Section 15.247 (d) |
| Test Method: | ANSI C63.10:2013 and KDB558074 D01 DTS Meas Guidance V04 |
| Limit: | In any 100 kHz bandwidth outside the frequency band in which the spread spectrum intentional radiator is operating, the radio frequency power that is produced by the intentional radiator shall be at least 20 dB below that in the 100 kHz bandwidth within the band that contains the highest level of the desired power, based on either an RF conducted or a radiated measurement. |
| Test setup: |  <p>The diagram illustrates the test setup. A Spectrum Analyzer is connected to an E.U.T. (Equipment Under Test) via a red cable. Both are placed on a Non-Conducted Table, which is supported by two legs. Below the table is a Ground Reference Plane.</p> |
| Test Instruments: | Refer to section 6.0 for details |
| Test mode: | Refer to section 5.2 for details |
| Test results: | Pass |

Test plot as follows:

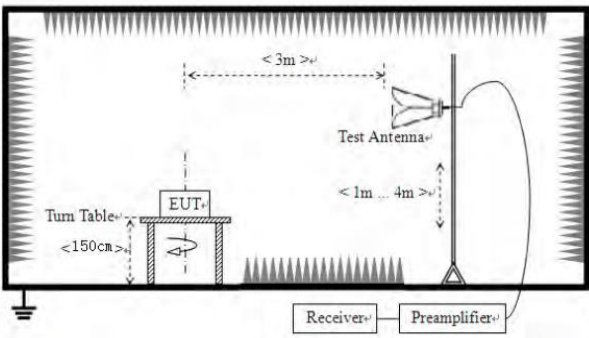


Lowest channel



Highest channel

7.5.2 Radiated Emission Method

| | | | | | |
|-----------------------|---|----------|--------------------|------|---------|
| Test Requirement: | FCC Part15 C Section 15.209 and 15.205 | | | | |
| Test Method: | ANSI C63.10:2013 | | | | |
| Test Frequency Range: | All of the restrict bands were tested, only the worst band's (2310MHz to 2500MHz) data was showed. | | | | |
| Test site: | Measurement Distance: 3m | | | | |
| Receiver setup: | Frequency | Detector | RBW | VBW | Value |
| | Above 1GHz | Peak | 1MHz | 3MHz | Peak |
| | | RMS | 1MHz | 3MHz | Average |
| Limit: | Frequency | | Limit (dBuV/m @3m) | | Value |
| | Above 1GHz | | 54.00 | | Average |
| | | | 74.00 | | Peak |
| Test setup: |  | | | | |
| Test Procedure: | <ol style="list-style-type: none"> 1. The EUT was placed on the top of a rotating table 1.5 meters above the ground at a 3 meter camber. The table was rotated 360 degrees to determine the position of the highest radiation. 2. The EUT was set 3 meters away from the interference-receiving antenna, which was mounted on the top of a variable-height antenna tower. 3. The antenna height is varied from one meter to four meters above the ground to determine the maximum value of the field strength. Both horizontal and vertical polarizations of the antenna are set to make the measurement. 4. For each suspected emission, the EUT was arranged to its worst case and then the antenna was tuned to heights from 1 meter to 4 meters and the rota table was turned from 0 degrees to 360 degrees to find the maximum reading. 5. The test-receiver system was set to Peak Detect Function and Specified Bandwidth with Maximum Hold Mode. 6. If the emission level of the EUT in peak mode was 10dB lower than the limit specified, then testing could be stopped and the peak values of the EUT would be reported. Otherwise the emissions that did not have 10dB margin would be re-tested one by one using peak, quasi-peak or average method as specified and then reported in a data sheet. 7. The radiation measurements are performed in X, Y, Z axis positioning. And found the Y axis positioning which it is worse case, only the test worst case mode is recorded in the report. | | | | |
| Test Instruments: | Refer to section 6.0 for details | | | | |
| Test mode: | Refer to section 5.2 for details | | | | |
| Test results: | Pass | | | | |

Measurement data:

Remark: The pre-test were performed on lowest, middle and highest frequencies, only the worst case's (lowest and highest frequencies) data was showed.

| | |
|---------------|----------------|
| Test channel: | Lowest channel |
|---------------|----------------|

Peak value:

| Frequency (MHz) | Read Level (dBuV) | Antenna Factor (dB/m) | Cable Loss (dB) | Preamp Factor (dB) | Level (dBuV/m) | Limit Line (dBuV/m) | Over Limit (dB) | Polarization |
|-----------------|-------------------|-----------------------|-----------------|--------------------|----------------|---------------------|-----------------|--------------|
| 2310.00 | 39.44 | 27.91 | 5.30 | 24.64 | 48.01 | 74.00 | -25.99 | Vertical |
| 2390.00 | 36.12 | 27.59 | 5.38 | 24.71 | 44.38 | 74.00 | -29.62 | Vertical |
| 2400.00 | 40.32 | 27.58 | 5.39 | 24.72 | 48.57 | 74.00 | -25.43 | Vertical |
| 2310.00 | 36.89 | 27.91 | 5.30 | 24.64 | 45.46 | 74.00 | -28.54 | Horizontal |
| 2390.00 | 36.98 | 27.59 | 5.38 | 24.71 | 45.24 | 74.00 | -28.76 | Horizontal |
| 2400.00 | 39.85 | 27.58 | 5.39 | 24.72 | 48.10 | 74.00 | -25.90 | Horizontal |

Average value:

| Frequency (MHz) | Read Level (dBuV) | Antenna Factor (dB/m) | Cable Loss (dB) | Preamp Factor (dB) | Level (dBuV/m) | Limit Line (dBuV/m) | Over Limit (dB) | Polarization |
|-----------------|-------------------|-----------------------|-----------------|--------------------|----------------|---------------------|-----------------|--------------|
| 2310.00 | 30.11 | 27.91 | 5.30 | 24.64 | 38.68 | 54.00 | -15.32 | Vertical |
| 2390.00 | 27.44 | 27.59 | 5.38 | 24.71 | 35.70 | 54.00 | -18.30 | Vertical |
| 2400.00 | 30.10 | 27.58 | 5.39 | 24.72 | 38.35 | 54.00 | -15.65 | Vertical |
| 2310.00 | 29.22 | 27.91 | 5.30 | 24.64 | 37.79 | 54.00 | -16.21 | Horizontal |
| 2390.00 | 26.34 | 27.59 | 5.38 | 24.71 | 34.60 | 54.00 | -19.40 | Horizontal |
| 2400.00 | 27.33 | 27.58 | 5.39 | 24.72 | 35.58 | 54.00 | -18.42 | Horizontal |

| | |
|---------------|-----------------|
| Test channel: | Highest channel |
|---------------|-----------------|

Peak value:

| Frequency (MHz) | Read Level (dBuV) | Antenna Factor (dB/m) | Cable Loss (dB) | Preamp Factor (dB) | Level (dBuV/m) | Limit Line (dBuV/m) | Over Limit (dB) | Polarization |
|-----------------|-------------------|-----------------------|-----------------|--------------------|----------------|---------------------|-----------------|--------------|
| 2483.50 | 43.22 | 27.53 | 5.47 | 24.80 | 51.42 | 74.00 | -22.58 | Vertical |
| 2500.00 | 35.26 | 27.55 | 5.49 | 24.86 | 43.44 | 74.00 | -30.56 | Vertical |
| 2483.50 | 36.87 | 27.53 | 5.47 | 24.80 | 45.07 | 74.00 | -28.93 | Horizontal |
| 2500.00 | 29.65 | 27.55 | 5.49 | 24.86 | 37.83 | 74.00 | -36.17 | Horizontal |

Average value:

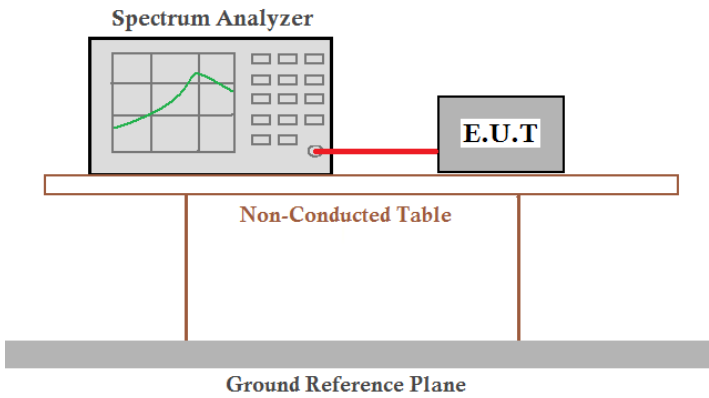
| Frequency (MHz) | Read Level (dBuV) | Antenna Factor (dB/m) | Cable Loss (dB) | Preamp Factor (dB) | Level (dBuV/m) | Limit Line (dBuV/m) | Over Limit (dB) | Polarization |
|-----------------|-------------------|-----------------------|-----------------|--------------------|----------------|---------------------|-----------------|--------------|
| 2483.50 | 35.44 | 27.53 | 5.47 | 24.80 | 43.64 | 54.00 | -10.36 | Vertical |
| 2500.00 | 25.44 | 27.55 | 5.49 | 24.86 | 33.62 | 54.00 | -20.38 | Vertical |
| 2483.50 | 26.37 | 27.53 | 5.47 | 24.80 | 34.57 | 54.00 | -19.43 | Horizontal |
| 2500.00 | 20.99 | 27.55 | 5.49 | 24.86 | 29.17 | 54.00 | -24.83 | Horizontal |

Remark:

1. *Final Level = Receiver Read level + Antenna Factor + Cable Loss – Pre-amplifier Factor*
2. *The emission levels of other frequencies are very lower than the limit and not show in test report.*

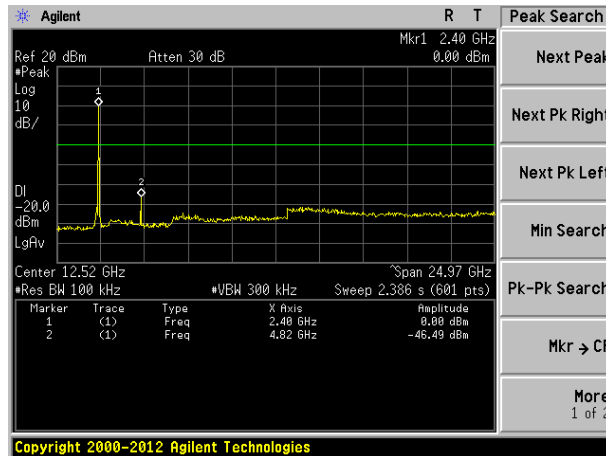
7.6 Spurious Emission

7.6.1 Conducted Emission Method

| | |
|-------------------|---|
| Test Requirement: | FCC Part15 C Section 15.247 (d) |
| Test Method: | ANSI C63.10:2013 and KDB558074 D01 DTS Meas Guidance V04 |
| Limit: | In any 100 kHz bandwidth outside the frequency band in which the spread spectrum intentional radiator is operating, the radio frequency power that is produced by the intentional radiator shall be at least 20 dB below that in the 100 kHz bandwidth within the band that contains the highest level of the desired power, based on either an RF conducted or a radiated measurement. |
| Test setup: |  <p>The diagram illustrates the test setup. A Spectrum Analyzer is connected to an E.U.T. (Equipment Under Test) via a red cable. Both are placed on a Non-Conducted Table, which sits on a Ground Reference Plane.</p> |
| Test Instruments: | Refer to section 6.0 for details |
| Test mode: | Refer to section 5.2 for details |
| Test results: | Pass |

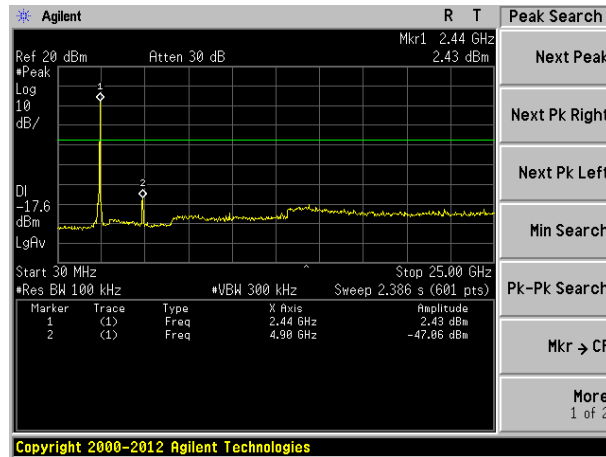
Test plot as follows:

Lowest channel



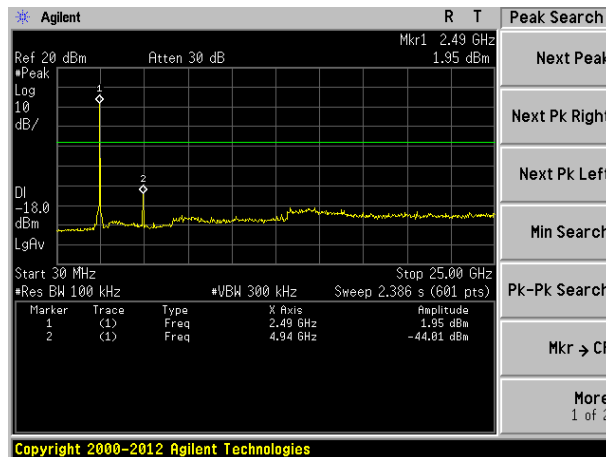
30MHz~25GHz

Middle channel



30MHz~25GHz

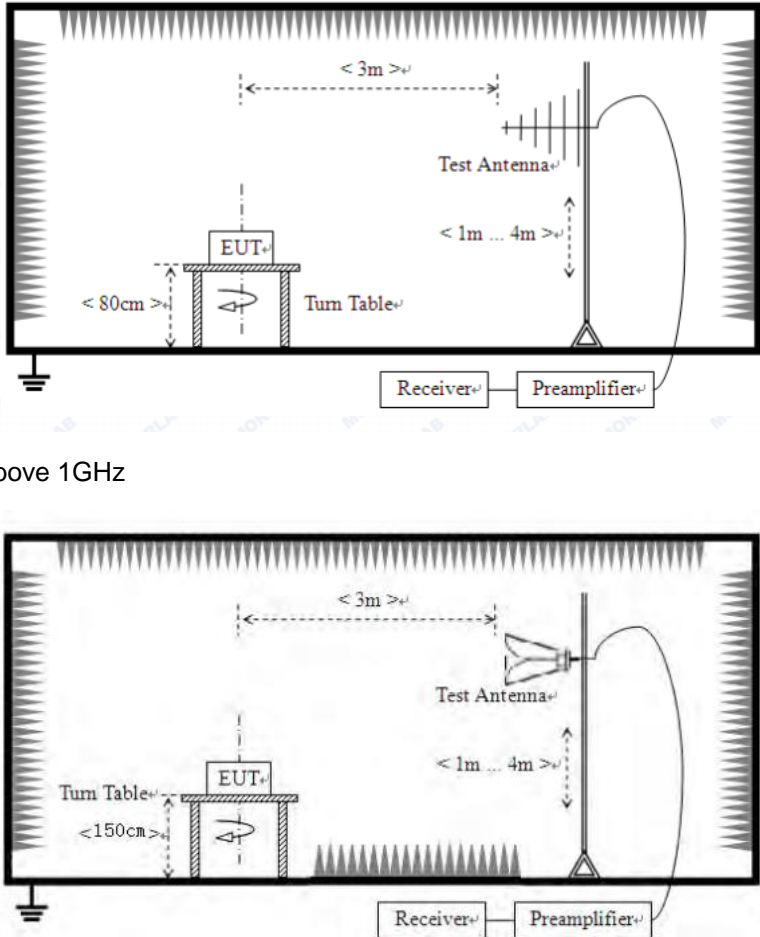
Highest channel



30MHz~25GHz

7.6.2 Radiated Emission Method

| | | | | | |
|--------------------------------|---|--------------|---------|----------------------|------------|
| Test Requirement: | FCC Part15 C Section 15.209 | | | | |
| Test Method: | ANSI C63.10:2013 | | | | |
| Test Frequency Range: | 9kHz to 25GHz | | | | |
| Test site: | Measurement Distance: 3m | | | | |
| Receiver setup: | Frequency | Detector | RBW | VBW | Value |
| | 9KHz-150KHz | Quasi-peak | 200Hz | 600Hz | Quasi-peak |
| | 150KHz-30MHz | Quasi-peak | 9KHz | 30KHz | Quasi-peak |
| | 30MHz-1GHz | Quasi-peak | 100KHz | 300KHz | Quasi-peak |
| | Above 1GHz | Peak | 1MHz | 3MHz | Peak |
| Peak | | 1MHz | 10Hz | Average | |
| Limit: (Spurious Emissions) | Frequency | Limit (uV/m) | Value | Measurement Distance | |
| | 0.009MHz-0.490MHz | 2400/F(KHz) | QP | 300m | |
| | 0.490MHz-1.705MHz | 24000/F(KHz) | QP | 300m | |
| | 1.705MHz-30MHz | 30 | QP | 30m | |
| | 30MHz-88MHz | 100 | QP | 3m | |
| | 88MHz-216MHz | 150 | QP | | |
| | 216MHz-960MHz | 200 | QP | | |
| | 960MHz-1GHz | 500 | QP | | |
| | Above 1GHz | 500 | Average | | |
| 5000 | | Peak | | | |
| Test setup: | Below 30MHz | | | | |
| | <p>The diagram illustrates the test setup for frequencies below 30 MHz. It shows an Equipment Under Test (EUT) mounted on a turn table. The EUT is positioned at a distance of 3m from the test antenna. The turn table is 80cm from the EUT. The test antenna is connected to a receiver and a preamplifier. The measurement distance is 3m, and the antenna is 1m from the EUT.</p> | | | | |
| Below 1GHz | | | | | |

| | |
|------------------------|--|
| |  <p>Above 1GHz</p> |
| <p>Test Procedure:</p> | <ol style="list-style-type: none"> 1. The EUT was placed on the top of a rotating table (0.8m for below 1G and 1.5m for above 1G) above the ground at a 3 meter camber. The table was rotated 360 degrees to determine the position of the highest radiation. 2. The EUT was set 3 meters away from the interference-receiving antenna, which was mounted on the top of a variable-height antenna tower. 3. The antenna height is varied from one meter to four meters above the ground to determine the maximum value of the field strength. Both horizontal and vertical polarizations of the antenna are set to make the measurement. 4. For each suspected emission, the EUT was arranged to its worst case and then the antenna was tuned to heights from 1 meter to 4 meters and the rota table was turned from 0 degrees to 360 degrees to find the maximum reading. 5. The test-receiver system was set to Peak Detect Function and Specified Bandwidth with Maximum Hold Mode. 6. If the emission level of the EUT in peak mode was 10dB lower than the limit specified, then testing could be stopped and the peak values of the |

| | |
|-------------------|---|
| | EUT would be reported. Otherwise the emissions that did not have 10dB margin would be re-tested one by one using peak, quasi-peak or average method as specified and then reported in a data sheet. |
| Test Instruments: | Refer to section 6.0 for details |
| Test mode: | Refer to section 5.2 for details |
| Test results: | Pass |

Measurement data:

9 kHz ~ 30 MHz

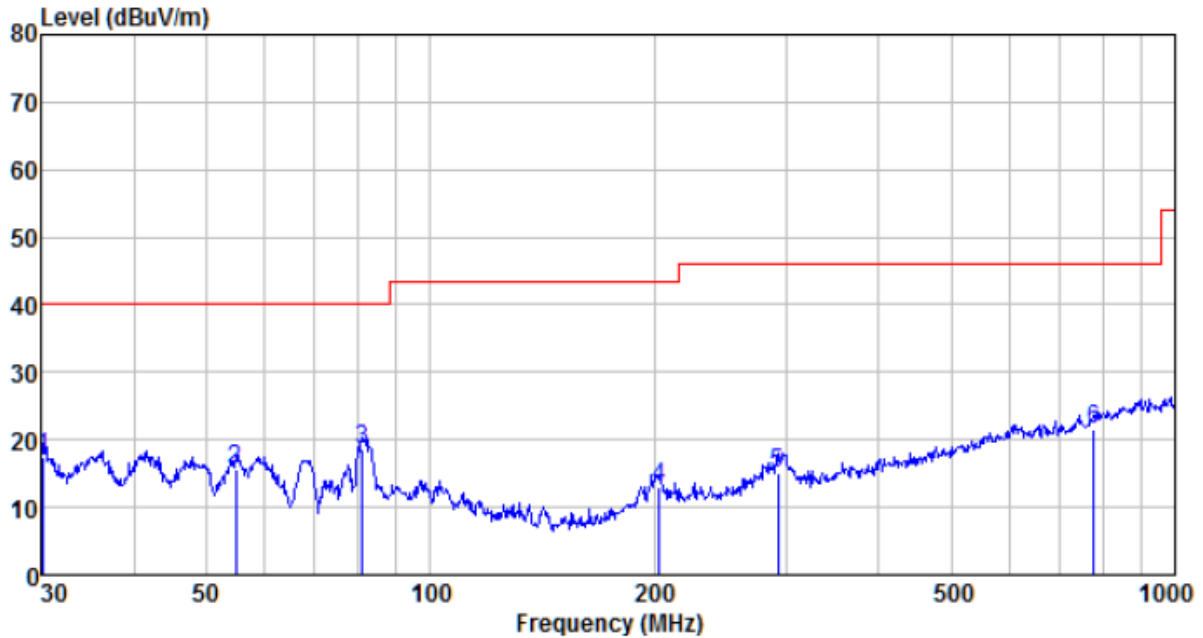
The low frequency, which started from 9 kHz to 30 MHz, was pre-scanned and the result which was 20 dB lower than the limit line per 15.31(o) was not reported.

Remark:

Pre-scan all kind of the place mode (X-axis, Y-axis, Z-axis), and found the Y-axis which it is worse case.

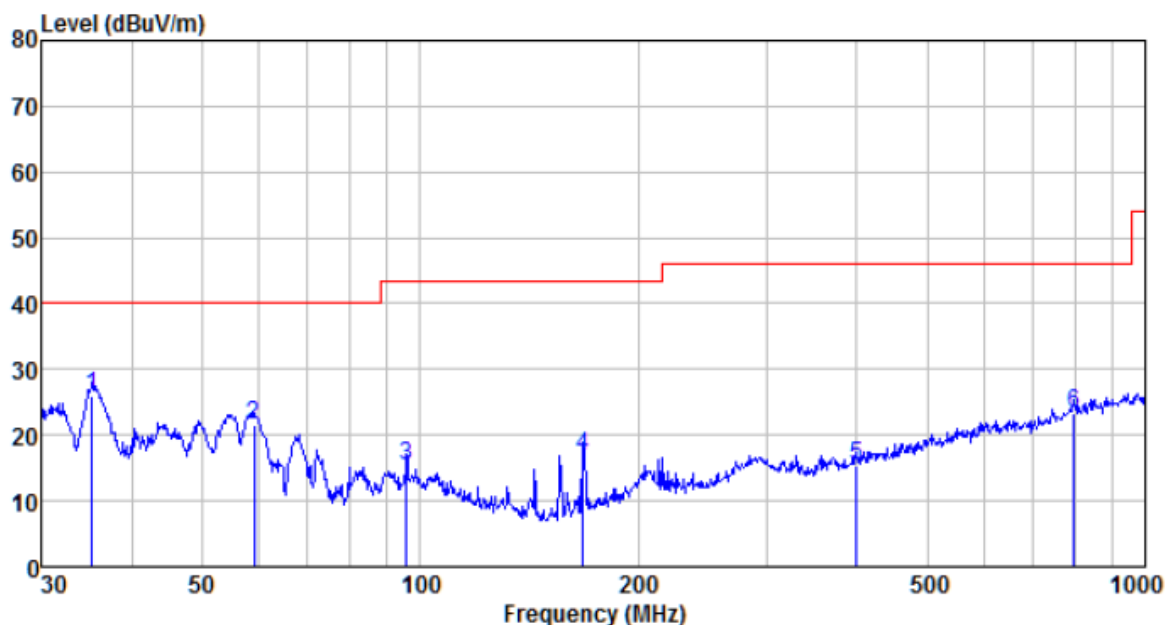
■ Below 1GHz

| | | | |
|-----------------|-------------------|---------------|------------|
| Mode: | Transmitting mode | Test by: | Jason |
| Temp./Hum.(%H): | 26°C/56%RH | Polarization: | Horizontal |



| Freq MHz | Reading level dBUV | Antenna factor dB/m | Cable loss dB | Preamp factor dB | level dBUV | Limit level dBUV/m | Over limit dB | Remark |
|-------------|--------------------------|---------------------------|---------------------|------------------------|---------------|--------------------------|---------------------|--------|
| 30.211 | 40.73 | 11.21 | 0.55 | 35.02 | 17.47 | 40.00 | -22.53 | QP |
| 54.835 | 39.39 | 11.80 | 0.82 | 36.25 | 15.76 | 40.00 | -24.24 | QP |
| 80.927 | 46.38 | 7.65 | 1.04 | 36.56 | 18.51 | 40.00 | -21.49 | QP |
| 202.810 | 37.84 | 10.51 | 1.86 | 37.33 | 12.88 | 43.50 | -30.62 | QP |
| 293.084 | 36.62 | 13.42 | 2.32 | 37.41 | 14.95 | 46.00 | -31.05 | QP |
| 776.878 | 33.85 | 21.03 | 4.37 | 37.62 | 21.63 | 46.00 | -24.37 | QP |

| | | | |
|-------------------------|--------------------------|----------------------|-----------------|
| Mode: | Transmitting mode | Test by: | Jason |
| Temp./Hum.(%RH): | 26°C/56%RH | Polarization: | Vertical |



| Freq MHz | Reading level dBuV | Antenna factor dB/m | Cable loss dB | Preamp factor dB | level dBuV | Limit level dBuV/m | Over limit dB | Remark |
|-------------|--------------------------|---------------------------|---------------------|------------------------|---------------|--------------------------|---------------------|--------|
| 35.251 | 49.31 | 11.36 | 0.61 | 35.37 | 25.91 | 40.00 | -14.09 | QP |
| 59.025 | 45.51 | 11.40 | 0.85 | 36.31 | 21.45 | 40.00 | -18.55 | QP |
| 95.762 | 39.18 | 11.59 | 1.16 | 36.69 | 15.24 | 43.50 | -28.26 | QP |
| 167.824 | 44.01 | 8.46 | 1.67 | 37.18 | 16.96 | 43.50 | -26.54 | QP |
| 400.432 | 34.78 | 15.34 | 2.85 | 37.52 | 15.45 | 46.00 | -30.55 | QP |
| 796.183 | 35.09 | 21.34 | 4.45 | 37.62 | 23.26 | 46.00 | -22.74 | QP |

■ Above 1GHz

| | |
|---------------|----------------|
| Test channel: | Lowest channel |
|---------------|----------------|

Peak value:

| Frequency (MHz) | Read Level (dBuV) | Antenna Factor (dB/m) | Cable Loss (dB) | Preamp Factor (dB) | Level (dBuV/m) | Limit Line (dBuV/m) | Over Limit (dB) | polarization |
|-----------------|-------------------|-----------------------|-----------------|--------------------|----------------|---------------------|-----------------|--------------|
| 4810.00 | 50.28 | 31.17 | 8.60 | 37.66 | 52.39 | 74.00 | -21.61 | Vertical |
| 7215.00 | 39.33 | 36.09 | 11.66 | 35.69 | 51.39 | 74.00 | -22.61 | Vertical |
| 9620.00 | 30.88 | 37.84 | 14.14 | 34.91 | 47.95 | 74.00 | -26.05 | Vertical |
| 12025.00 | 27.46 | 38.61 | 15.03 | 36.13 | 44.97 | 74.00 | -29.03 | Vertical |
| 4810.00 | 49.46 | 31.17 | 8.60 | 37.66 | 51.57 | 74.00 | -22.43 | Horizontal |
| 7215.00 | 41.92 | 36.09 | 11.66 | 35.69 | 53.98 | 74.00 | -20.02 | Horizontal |
| 9620.00 | 28.22 | 37.84 | 14.14 | 34.91 | 45.29 | 74.00 | -28.71 | Horizontal |
| 12025.00 | 27.65 | 38.61 | 15.03 | 36.13 | 45.16 | 74.00 | -28.84 | Horizontal |

Average value:

| Frequency (MHz) | Read Level (dBuV) | Antenna Factor (dB/m) | Cable Loss (dB) | Preamp Factor (dB) | Level (dBuV/m) | Limit Line (dBuV/m) | Over Limit (dB) | polarization |
|-----------------|-------------------|-----------------------|-----------------|--------------------|----------------|---------------------|-----------------|--------------|
| 4810.00 | 44.33 | 31.17 | 8.60 | 37.66 | 46.44 | 54.00 | -7.56 | Vertical |
| 7215.00 | 30.23 | 36.09 | 11.66 | 35.69 | 42.29 | 54.00 | -11.71 | Vertical |
| 9620.00 | 20.15 | 37.84 | 14.14 | 34.91 | 37.22 | 54.00 | -16.78 | Vertical |
| 12025.00 | 17.30 | 38.61 | 15.03 | 36.13 | 34.81 | 54.00 | -19.19 | Vertical |
| 4810.00 | 43.66 | 31.17 | 8.60 | 37.66 | 45.77 | 54.00 | -8.23 | Horizontal |
| 7215.00 | 30.69 | 36.09 | 11.66 | 35.69 | 42.75 | 54.00 | -11.25 | Horizontal |
| 9620.00 | 19.22 | 37.84 | 14.14 | 34.91 | 36.29 | 54.00 | -17.71 | Horizontal |
| 12025.00 | 17.39 | 38.61 | 15.03 | 36.13 | 34.90 | 54.00 | -19.10 | Horizontal |

Remark:

1. Final Level = Receiver Read level + Antenna Factor + Cable Loss – Preamplifier Factor
2. The emission levels of other frequencies are very lower than the limit and not show in test report.
3. “*”, means this data is the too weak instrument of signal is unable to test.

| | |
|---------------|----------------|
| Test channel: | Middle channel |
|---------------|----------------|

Peak value:

| Frequency (MHz) | Read Level (dBUV) | Antenna Factor (dB/m) | Cable Loss (dB) | Preamp Factor (dB) | Level (dBUV/m) | Limit Line (dBUV/m) | Over Limit (dB) | polarization |
|-----------------|-------------------|-----------------------|-----------------|--------------------|----------------|---------------------|-----------------|--------------|
| 4880.00 | 50.11 | 31.26 | 8.66 | 37.68 | 52.35 | 74.00 | -21.65 | Vertical |
| 7320.00 | 40.33 | 36.32 | 11.72 | 35.64 | 52.73 | 74.00 | -21.27 | Vertical |
| 9760.00 | 29.78 | 38.01 | 14.25 | 34.98 | 47.06 | 74.00 | -26.94 | Vertical |
| 12200.00 | 27.01 | 38.64 | 15.14 | 36.26 | 44.53 | 74.00 | -29.47 | Vertical |
| 4880.00 | 48.65 | 31.26 | 8.66 | 37.68 | 50.89 | 74.00 | -23.11 | Horizontal |
| 7320.00 | 39.57 | 36.32 | 11.72 | 35.64 | 51.97 | 74.00 | -22.03 | Horizontal |
| 9760.00 | 29.66 | 38.01 | 14.25 | 34.98 | 46.94 | 74.00 | -27.06 | Horizontal |
| 12200.00 | 27.33 | 38.64 | 15.14 | 36.26 | 44.85 | 74.00 | -29.15 | Horizontal |

Average value:

| Frequency (MHz) | Read Level (dBUV) | Antenna Factor (dB/m) | Cable Loss (dB) | Preamp Factor (dB) | Level (dBUV/m) | Limit Line (dBUV/m) | Over Limit (dB) | polarization |
|-----------------|-------------------|-----------------------|-----------------|--------------------|----------------|---------------------|-----------------|--------------|
| 4880.00 | 42.88 | 31.26 | 8.66 | 37.68 | 45.12 | 54.00 | -8.88 | Vertical |
| 7320.00 | 33.22 | 36.32 | 11.72 | 35.64 | 45.62 | 54.00 | -8.38 | Vertical |
| 9760.00 | 22.50 | 38.01 | 14.25 | 34.98 | 39.78 | 54.00 | -14.22 | Vertical |
| 12200.00 | 16.32 | 38.64 | 15.14 | 36.26 | 33.84 | 54.00 | -20.16 | Vertical |
| 4880.00 | 40.32 | 31.26 | 8.66 | 37.68 | 42.56 | 54.00 | -11.44 | Horizontal |
| 7320.00 | 22.97 | 36.32 | 11.72 | 35.64 | 35.37 | 54.00 | -18.63 | Horizontal |
| 9760.00 | 21.85 | 38.01 | 14.25 | 34.98 | 39.13 | 54.00 | -14.87 | Horizontal |
| 12200.00 | 17.77 | 38.64 | 15.14 | 36.26 | 35.29 | 54.00 | -18.71 | Horizontal |

Remark:

1. Final Level = Receiver Read level + Antenna Factor + Cable Loss – Pre-amplifier Factor
2. The emission levels of other frequencies are very lower than the limit and not show in test report.
3. “*”, means this data is the too weak instrument of signal is unable to test.

| | |
|---------------|-----------------|
| Test channel: | Highest channel |
|---------------|-----------------|

Peak value:

| Frequency (MHz) | Read Level (dBuV) | Antenna Factor (dB/m) | Cable Loss (dB) | Preamp Factor (dB) | Level (dBuV/m) | Limit Line (dBuV/m) | Over Limit (dB) | polarization |
|-----------------|-------------------|-----------------------|-----------------|--------------------|----------------|---------------------|-----------------|--------------|
| 4960.00 | 50.17 | 31.36 | 8.73 | 37.69 | 52.57 | 74.00 | -21.43 | Vertical |
| 7440.00 | 39.65 | 36.59 | 11.79 | 35.58 | 52.45 | 74.00 | -21.55 | Vertical |
| 9920.00 | 29.17 | 38.22 | 14.38 | 35.07 | 46.70 | 74.00 | -27.30 | Vertical |
| 12400.00 | 26.37 | 38.68 | 15.27 | 36.43 | 43.89 | 74.00 | -30.11 | Vertical |
| 4960.00 | 48.50 | 31.36 | 8.73 | 37.69 | 50.90 | 74.00 | -23.10 | Horizontal |
| 7440.00 | 39.68 | 36.59 | 11.79 | 35.58 | 52.48 | 74.00 | -21.52 | Horizontal |
| 9920.00 | 27.69 | 38.22 | 14.38 | 35.07 | 45.22 | 74.00 | -28.78 | Horizontal |
| 12400.00 | 28.34 | 38.68 | 15.27 | 36.43 | 45.86 | 74.00 | -28.14 | Horizontal |

Average value:

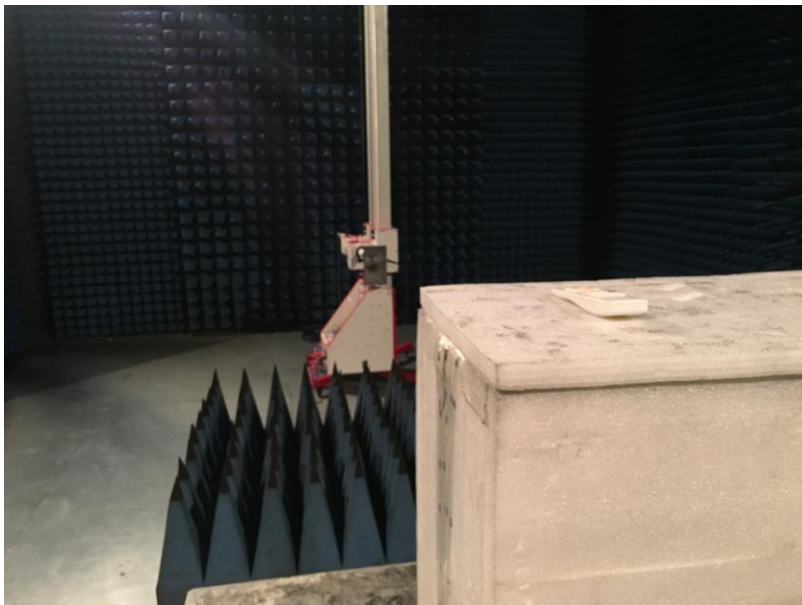
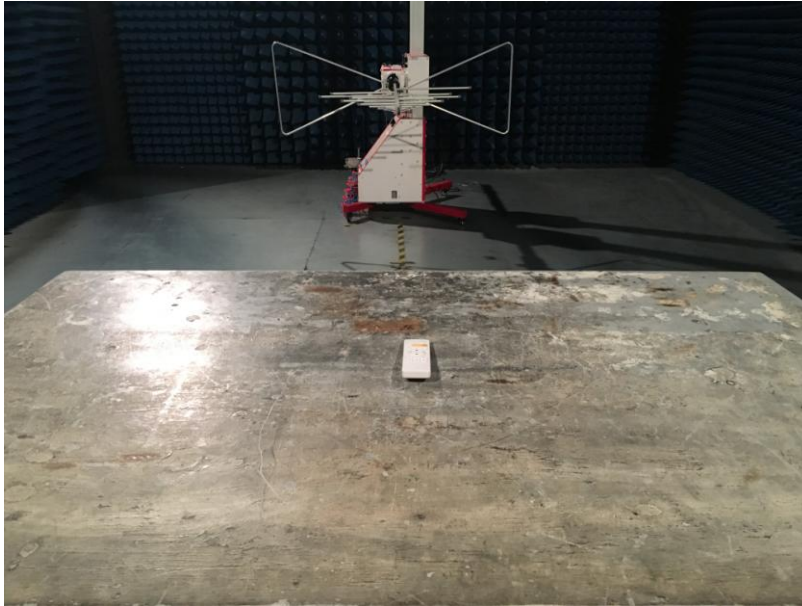
| Frequency (MHz) | Read Level (dBuV) | Antenna Factor (dB/m) | Cable Loss (dB) | Preamp Factor (dB) | Level (dBuV/m) | Limit Line (dBuV/m) | Over Limit (dB) | polarization |
|-----------------|-------------------|-----------------------|-----------------|--------------------|----------------|---------------------|-----------------|--------------|
| 4960.00 | 42.50 | 31.36 | 8.73 | 37.69 | 44.90 | 54.00 | -9.10 | Vertical |
| 7440.00 | 31.77 | 36.59 | 11.79 | 35.58 | 44.57 | 54.00 | -9.43 | Vertical |
| 9920.00 | 20.96 | 38.22 | 14.38 | 35.07 | 38.49 | 54.00 | -15.51 | Vertical |
| 12400.00 | 17.64 | 38.68 | 15.27 | 36.43 | 35.16 | 54.00 | -18.84 | Vertical |
| 4960.00 | 40.45 | 31.36 | 8.73 | 37.69 | 42.85 | 54.00 | -11.15 | Horizontal |
| 7440.00 | 31.50 | 36.59 | 11.79 | 35.58 | 44.30 | 54.00 | -9.70 | Horizontal |
| 9920.00 | 20.98 | 38.22 | 14.38 | 35.07 | 38.51 | 54.00 | -15.49 | Horizontal |
| 12400.00 | 18.80 | 38.68 | 15.27 | 36.43 | 36.32 | 54.00 | -17.68 | Horizontal |

Remark:

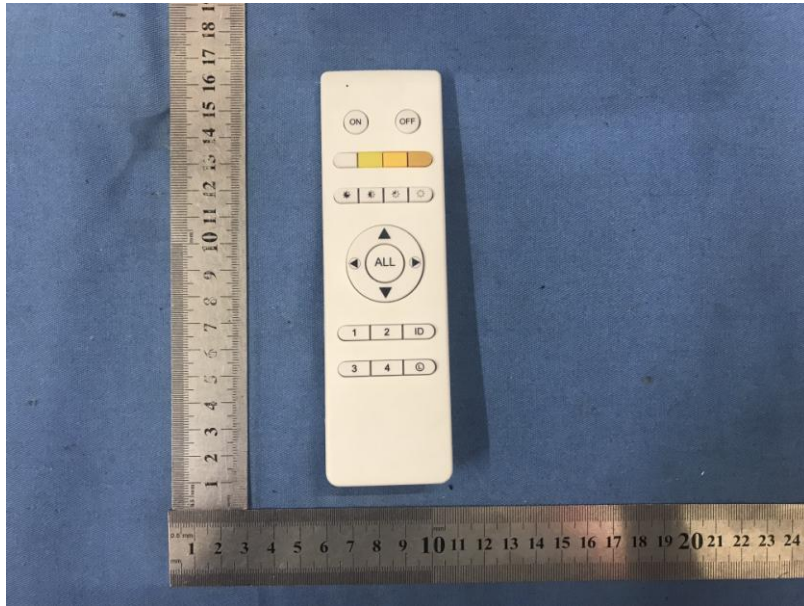
1. Final Level = Receiver Read level + Antenna Factor + Cable Loss – Pre-amplifier Factor
2. The emission levels of other frequencies are very lower than the limit and not show in test report.
3. “*”, means this data is the too weak instrument of signal is unable to test.

8 Test Setup Photo

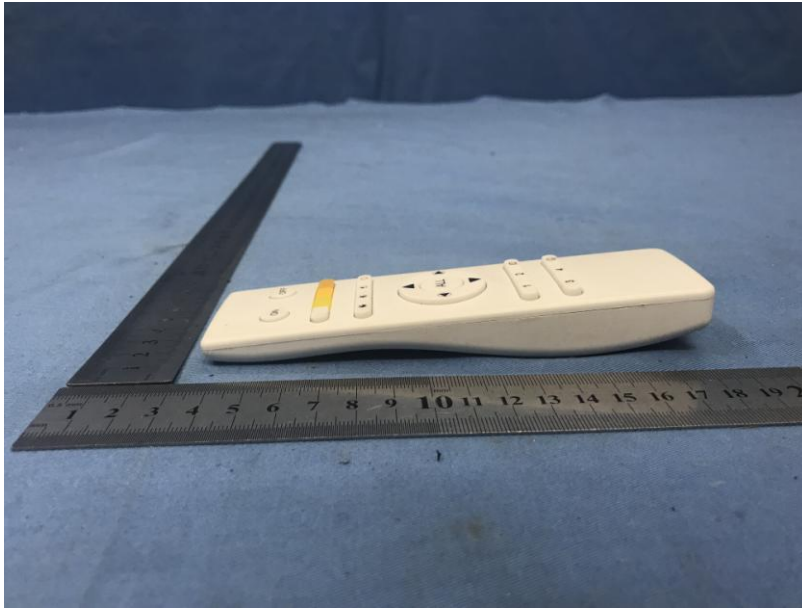
Radiated Emission

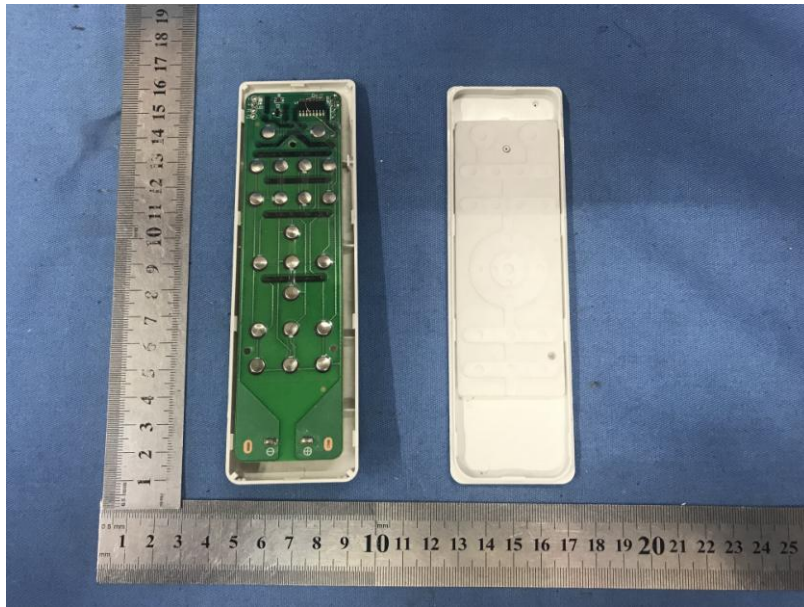


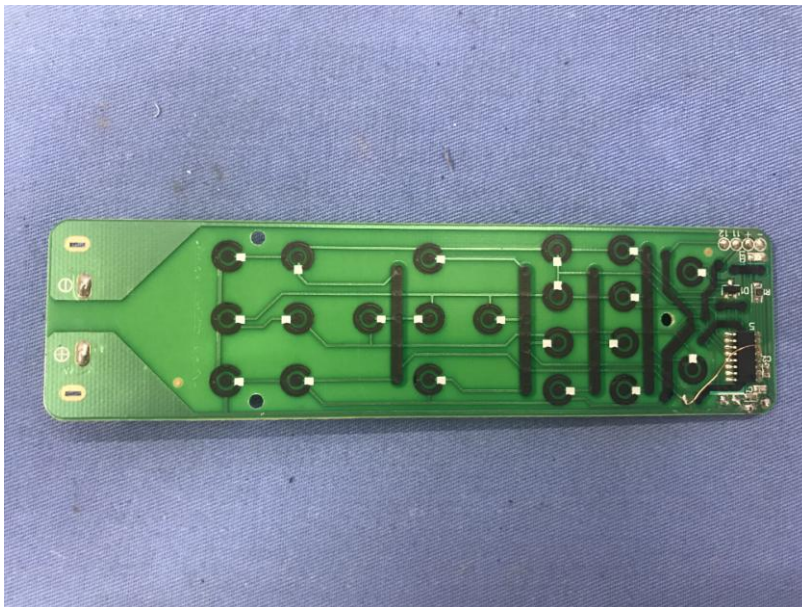
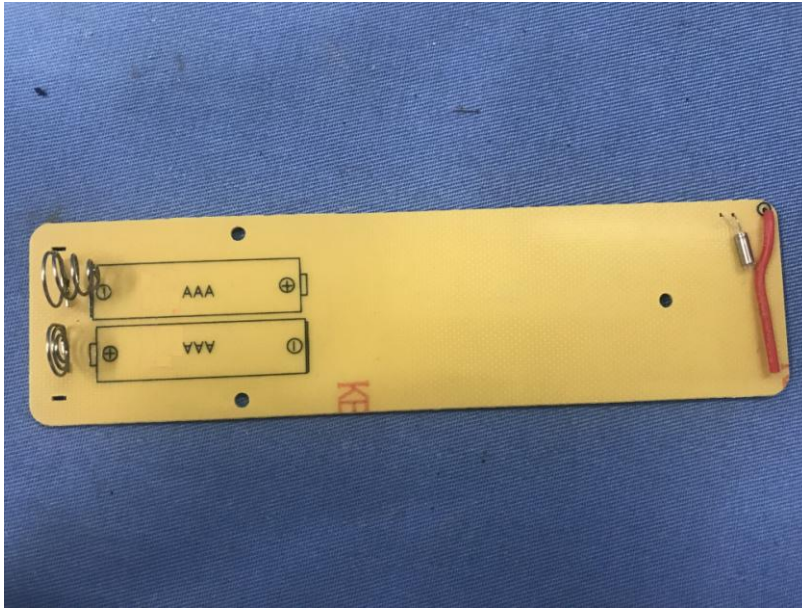
9 EUT Constructional Details

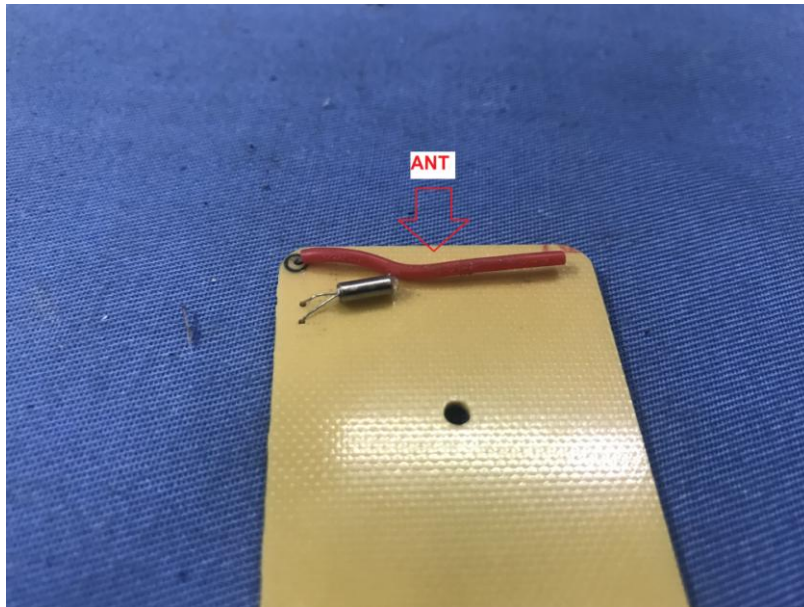












-----End-----