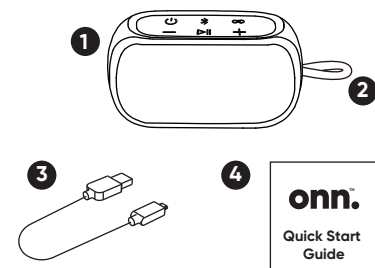


**onn.**<sup>TM</sup>

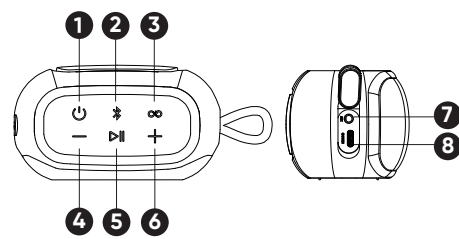
Small Rugged Speaker  
Quick Start Guide

**What's in the Box?**



- 1. Bluetooth Speaker
- 2. Strap
- 3. Charging Cable
- 4. Quick Start Guide

**Get to Know Small Rugged Speaker**

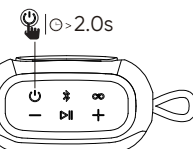


- 1. Power
- 2. Bluetooth
- 3. broadcast
- 4. Volume -
- 5. Play / Pause
- 6. Volume +
- 7. AUX port
- 8. Charging port

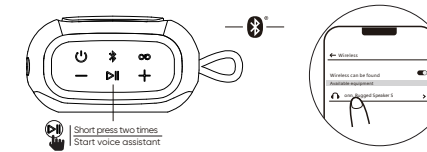
**Power on/off & Bluetooth Pairing**

01

Press "⏻" button for 2s to turn on or turn off.



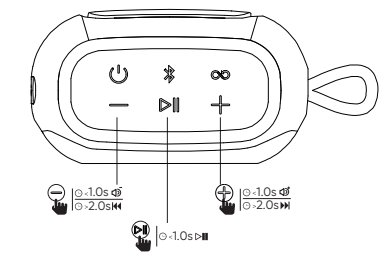
Short press "\*" button to activate the bluetooth device. Use phone to search device's pairing name "onn. Rugged Speaker S", click pairing name for connection and pairing.



**Play music**

02

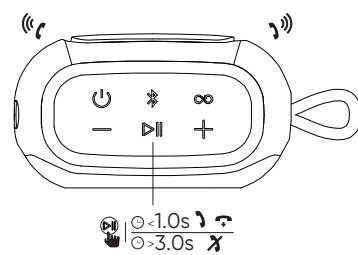
Short press "▶||" button to execute play and pause.  
Short press volume "+" to increase volume.  
Long press volume "+" to next song.  
Short press volume "-" to reduce volume.  
Long press volume "-" to previous song.



**Answer/End/Reject a call**

03

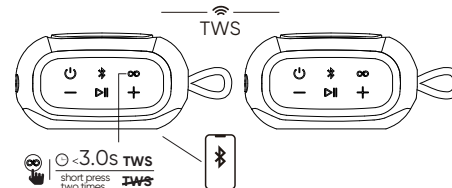
Short press "▶||" button to answer incoming calls.  
Short press "▶||" to end the call.  
Long press "▶||" button for 3s to reject a call.



**Pairing two speakers together**

04

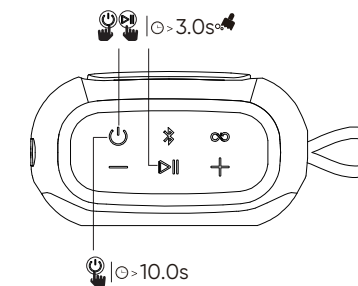
Power on two speakers at the same time, and wait for prompt tone "Searching for connection" from both speakers. Then choose one of the speakers as primary, and long press "∞" button for 3s to enter TWS pairing mode. You will hear "left channel, right channel" and now the two speakers are paired. Use your mobile device to pair with the primary speaker by Bluetooth pairing method, you are now able to play audio in unison using your mobile device. In addition, press "∞" button two times will disconnect the TWS.



**Clear pairing records and reset speaker**

05

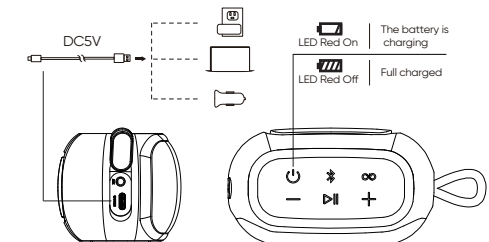
Press "⏻" "▶||" for 3s, all pairing records will be cleared and restore default volume.  
Press "⏻" for 10s, The speaker can be reset.



**Charging and connect outside audio**

06

To preserve battery lifespan, fully charge at least once every 45 days.  
It takes about four hours to fully charge.



Need help?  
We're here for you every day from 7 a.m. – 9 p.m. CST.  
Give us a call at 1-888-516-2630

©2022 Walmart  
onn. is a trademark of Walmart  
All Rights Reserved.

AABLSV100081918

6 81131 41604 7

We'd love to hear from you. Scan with your Walmart app and let us know what you think.

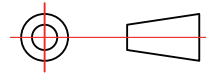
80\*5P

80



赣州得辉达科技有限公司  
GANZHOU DEHUIDA ELECTRONICS CO.,LTD.

机型: BM2020  
料号:PKG.17BM202000001  
品名:警示卡  
版本: A.0



A 4 单位: mm

材质要求: 如描述 绘图: 覃圣涛  
表面处理: 如描述 审核: 胡可  
比例: 1: 1 批准: [Signature]  
页数: 1 生效日期: 2021.12.23

版本	描述	日期
A.0	初步发行	2021.12.23

## 正反面印刷

80

WARNING

Changes or modifications to this unit not expressly approved by the party responsible for compliance could void the user's authority to operate the equipment.  
NOTE: This equipment has been tested and found to comply with the limits for a Class B digital device, pursuant to Part 15 of the FCC Rules. These limits are designed to provide reasonable protection against harmful interference in a residential installation. This equipment generates, uses and can radiate radio frequency energy and, if not installed and used in accordance with the instructions, may cause harmful interference to radio communications.

However, there is no guarantee that interference will not occur in a particular installation. If this equipment does cause harmful interference to radio or television reception, which can be determined by turning the equipment off and on, the user is encouraged to try to correct the interference by one or more of the following measures:

- Reorient or relocate the receiving antenna.
- Increase the separation between the equipment and receiver.
- Connect the equipment into an outlet on a circuit different from that to which the receiver is connected.
- Consult the dealer or an experienced radio/TV technician for help.

This device complies with Part 15 of the FCC Rules. Operation is subject to the following two conditions:  
(1) this device may not cause harmful interference, and  
(2) this device must accept any interference received, including interference that may cause undesired operation.

Need help?  
We're here for you every day from 7 a.m. - 9 p.m. CST. Give us a call at 1-888-516-2630

80

**Party sync mode compatible model list:**

AABLSV100081918	AALAV100081918
AALUN100081918	AACORRA100081918
AAGRY100081918	

### 技术要求:

- 1.W80\*H80mm 80g铜版纸 1C 沃尔玛通用 BM2020 环保
2. 其它未标注尺寸及公差请参照图档及公差表。

ROHS  HF  REACH  CA65

尺寸公差: +/-1mm