

|                    |                                 |                          |                |
|--------------------|---------------------------------|--------------------------|----------------|
| <b>EUT</b>         | Bluetooth True Wireless Headset | <b>Model Name</b>        | ROCKit         |
| <b>Temperature</b> | 25° C                           | <b>Relative Humidity</b> | 55.4%          |
| <b>Pressure</b>    | 960hPa                          | <b>Test Voltage</b>      | Normal Voltage |
| <b>Test Mode</b>   | Mode 3                          | <b>Antenna</b>           | Horizontal     |

| Frequency (MHz) | Meter Reading (dBμV) | Factor (dB) | Emission Level (dBμV/m) | Limits (dBμV/m) | Margin (dB) | Value Type |
|-----------------|----------------------|-------------|-------------------------|-----------------|-------------|------------|
| 4960.000        | 51.15                | 0.22        | 51.37                   | 74              | -22.63      | peak       |
| 4960.000        | 46.42                | 0.22        | 46.64                   | 54              | -7.36       | AVG        |
| 7440.000        | 41.57                | 2.64        | 44.21                   | 74              | -29.79      | peak       |
| 7440.000        | 37.58                | 2.64        | 40.22                   | 54              | -13.78      | AVG        |
|                 |                      |             |                         |                 |             |            |
|                 |                      |             |                         |                 |             |            |

Remark:  
Factor = Antenna Factor + Cable Loss – Pre-amplifier.

|                    |                                 |                          |                |
|--------------------|---------------------------------|--------------------------|----------------|
| <b>EUT</b>         | Bluetooth True Wireless Headset | <b>Model Name</b>        | ROCKit         |
| <b>Temperature</b> | 25° C                           | <b>Relative Humidity</b> | 55.4%          |
| <b>Pressure</b>    | 960hPa                          | <b>Test Voltage</b>      | Normal Voltage |
| <b>Test Mode</b>   | Mode 3                          | <b>Antenna</b>           | Vertical       |

| Frequency (MHz) | Meter Reading (dBμV) | Factor (dB) | Emission Level (dBμV/m) | Limits (dBμV/m) | Margin (dB) | Value Type |
|-----------------|----------------------|-------------|-------------------------|-----------------|-------------|------------|
| 4960.000        | 49.68                | 0.22        | 49.9                    | 74              | -24.1       | peak       |
| 4960.000        | 44.73                | 0.22        | 44.95                   | 54              | -9.05       | AVG        |
| 7440.000        | 39.63                | 2.64        | 42.27                   | 74              | -31.73      | peak       |
| 7440.000        | 35.11                | 2.64        | 37.75                   | 54              | -16.25      | AVG        |
|                 |                      |             |                         |                 |             |            |
|                 |                      |             |                         |                 |             |            |

Remark:  
Factor = Antenna Factor + Cable Loss – Pre-amplifier.

**RESULT: PASS**

**Note:**

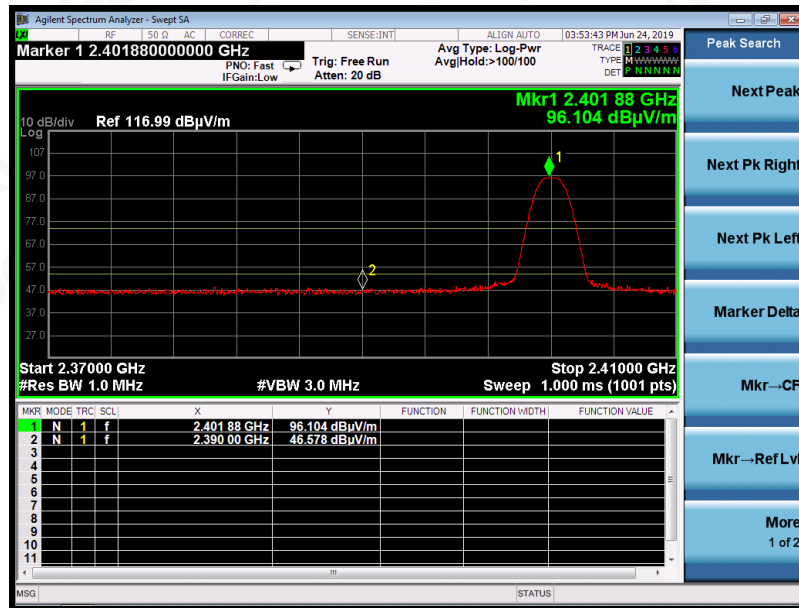
Other emissions from 1G to 25 GHz are considered as ambient noise. No recording in the test report.  
Factor = Antenna Factor + Cable loss - Amplifier gain, Over=Measure-Limit.  
The “Factor” value can be calculated automatically by software of measurement system.



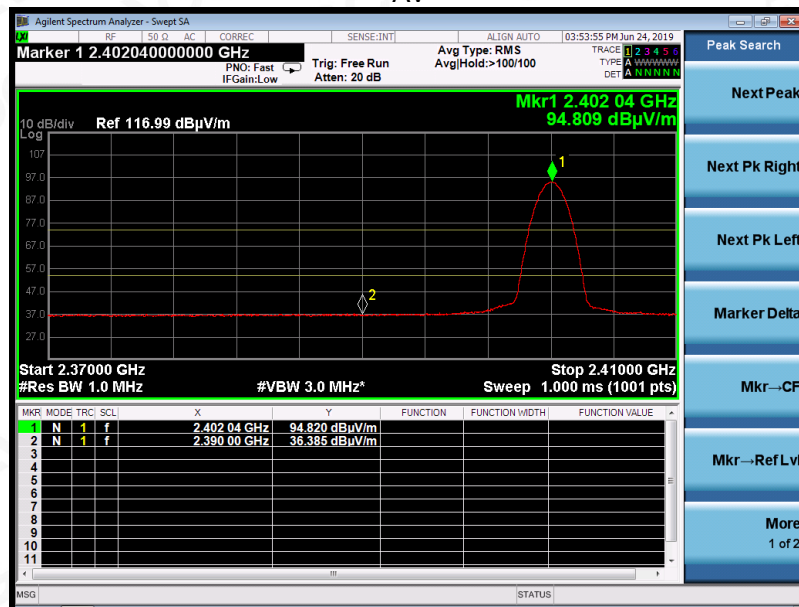
**TEST RESULT FOR RESTRICTED BANDS REQUIREMENTS**

|                    |                                 |                          |                |
|--------------------|---------------------------------|--------------------------|----------------|
| <b>EUT</b>         | Bluetooth True Wireless Headset | <b>Model Name</b>        | ROCKit         |
| <b>Temperature</b> | 25° C                           | <b>Relative Humidity</b> | 55.4%          |
| <b>Pressure</b>    | 960hPa                          | <b>Test Voltage</b>      | Normal Voltage |
| <b>Test Mode</b>   | Mode 1                          | <b>Antenna</b>           | Horizontal     |

PK



AV



**RESULT: PASS**

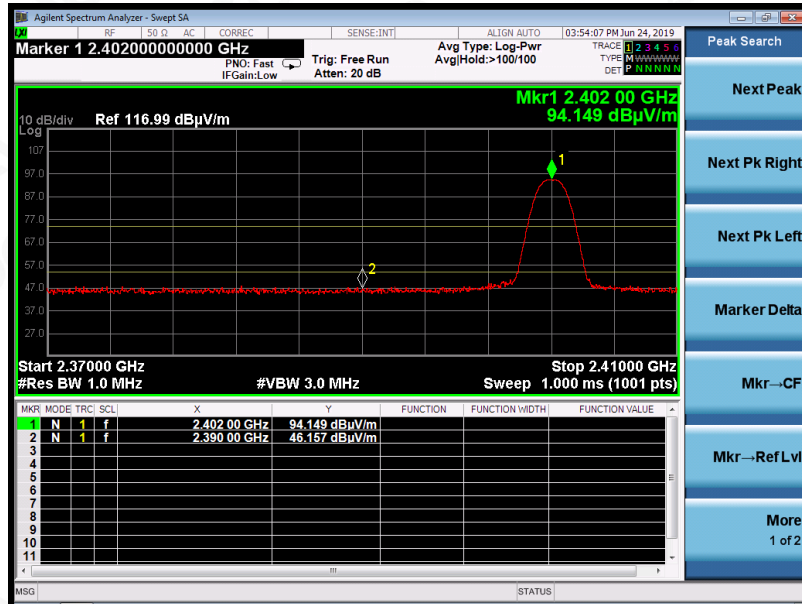


Attestation of Global Compliance(Shenzhen)Co.,Ltd.

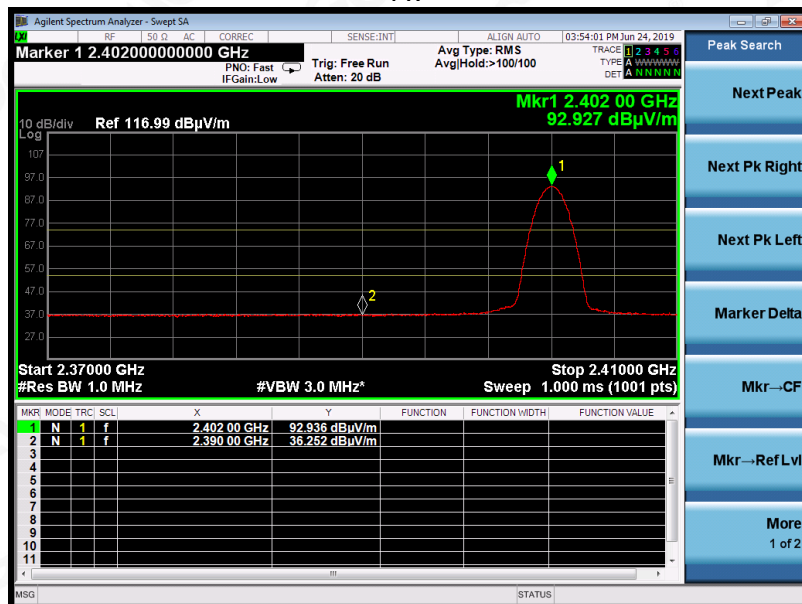
Add: 2/F., Building 2, No.1-4, Chaxi Sanwei Technial Industrial Park, Gushu, Xixiang, Bao'an District, Shenzhen, Guangdong, China  
Tel: +86-755 2523 4088 E-mail: agc@agc-cert.com Service Hotline:400 089 2118

|             |                                 |                   |                |
|-------------|---------------------------------|-------------------|----------------|
| EUT         | Bluetooth True Wireless Headset | Model Name        | ROCKit         |
| Temperature | 25° C                           | Relative Humidity | 55.4%          |
| Pressure    | 960hPa                          | Test Voltage      | Normal Voltage |
| Test Mode   | Mode 1                          | Antenna           | Vertical       |

PK



AV



RESULT: PASS

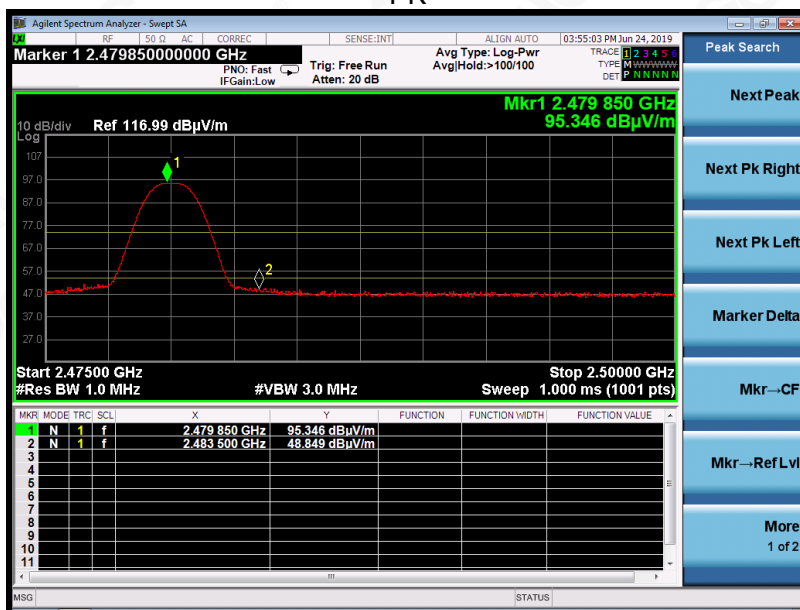


Attestation of Global Compliance(Shenzhen)Co.,Ltd.

Add: 2/F., Building 2, No.1-4, Chaxi Sanwei Technial Industrial Park, Gushu, Xixiang, Bao'an District, Shenzhen, Guangdong, China  
Tel: +86-755 2523 4088 E-mail: agc@agc-cert.com Service Hotline:400 089 2118

|             |                                 |                   |                |
|-------------|---------------------------------|-------------------|----------------|
| EUT         | Bluetooth True Wireless Headset | Model Name        | ROCKit         |
| Temperature | 25° C                           | Relative Humidity | 55.4%          |
| Pressure    | 960hPa                          | Test Voltage      | Normal Voltage |
| Test Mode   | Mode 3                          | Antenna           | Horizontal     |

PK



AV



RESULT: PASS



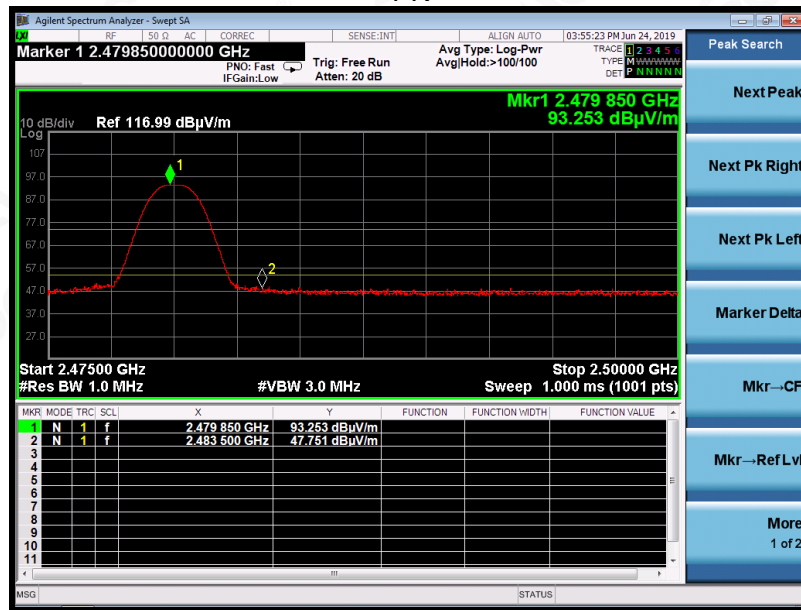
Attestation of Global Compliance(Shenzhen)Co.,Ltd.

Add: 2/F., Building 2, No.1-4, Chaxi Sanwei Technial Industrial Park, Gushu, Xixiang, Bao'an District, Shenzhen, Guangdong, China  
Tel: +86-755 2523 4088 E-mail: agc@agc-cert.com Service Hotline:400 089 2118

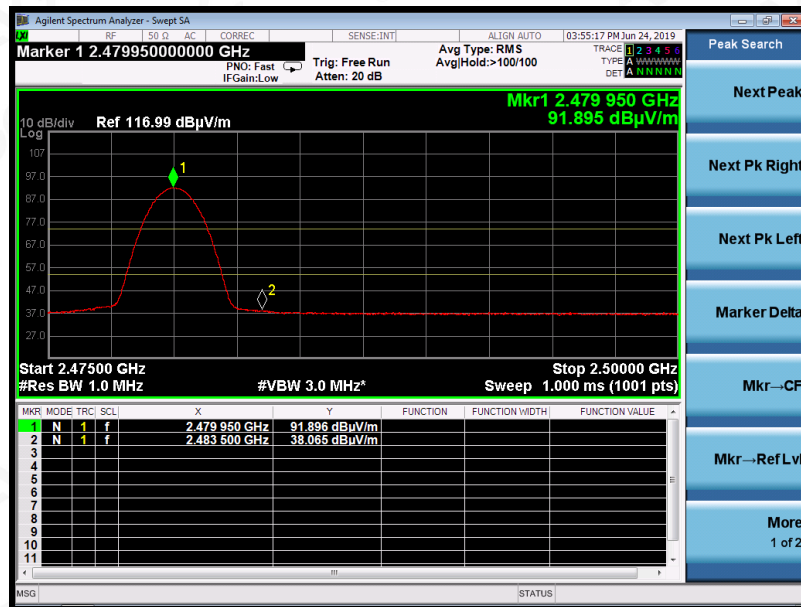


|             |                                 |                   |                |
|-------------|---------------------------------|-------------------|----------------|
| EUT         | Bluetooth True Wireless Headset | Model Name        | ROCKit         |
| Temperature | 25° C                           | Relative Humidity | 55.4%          |
| Pressure    | 960hPa                          | Test Voltage      | Normal Voltage |
| Test Mode   | Mode 3                          | Antenna           | Vertical       |

PK



AV



**RESULT: PASS**

**Note:** The factor had been edited in the “Input Correction” of the Spectrum Analyzer. So the Amplitude of test plots is equal to Reading level plus the Factor in dB. Use the A dB(µV) to represent the Amplitude. Use the F dB(µV/m) to represent the Field Strength. So A=F.

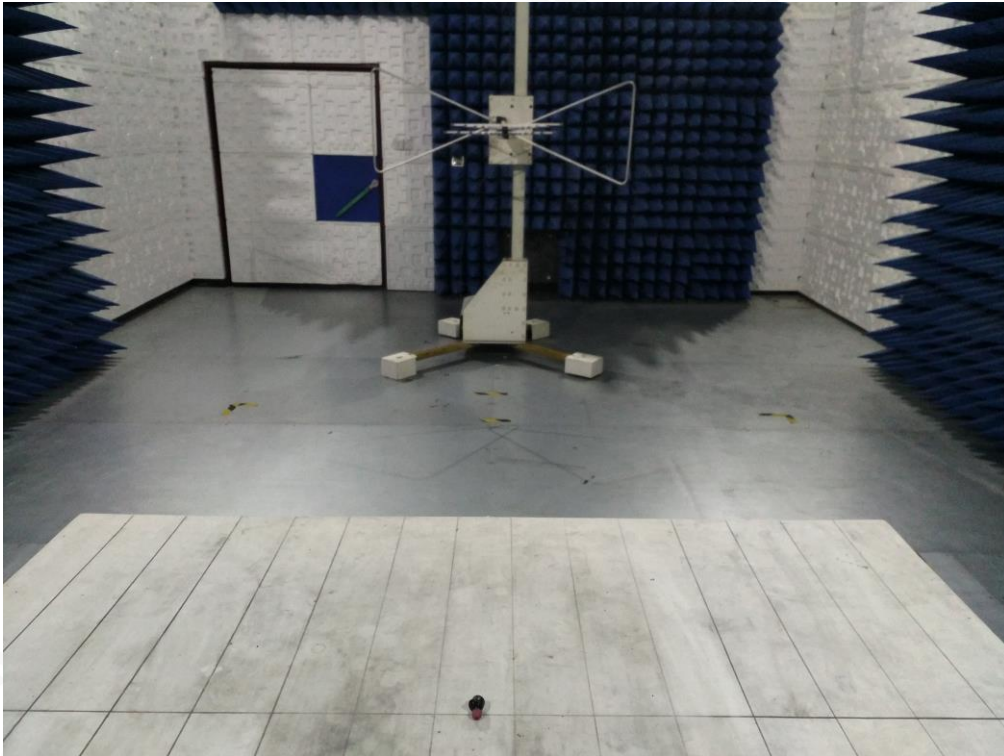


Attestation of Global Compliance(Shenzhen)Co.,Ltd.

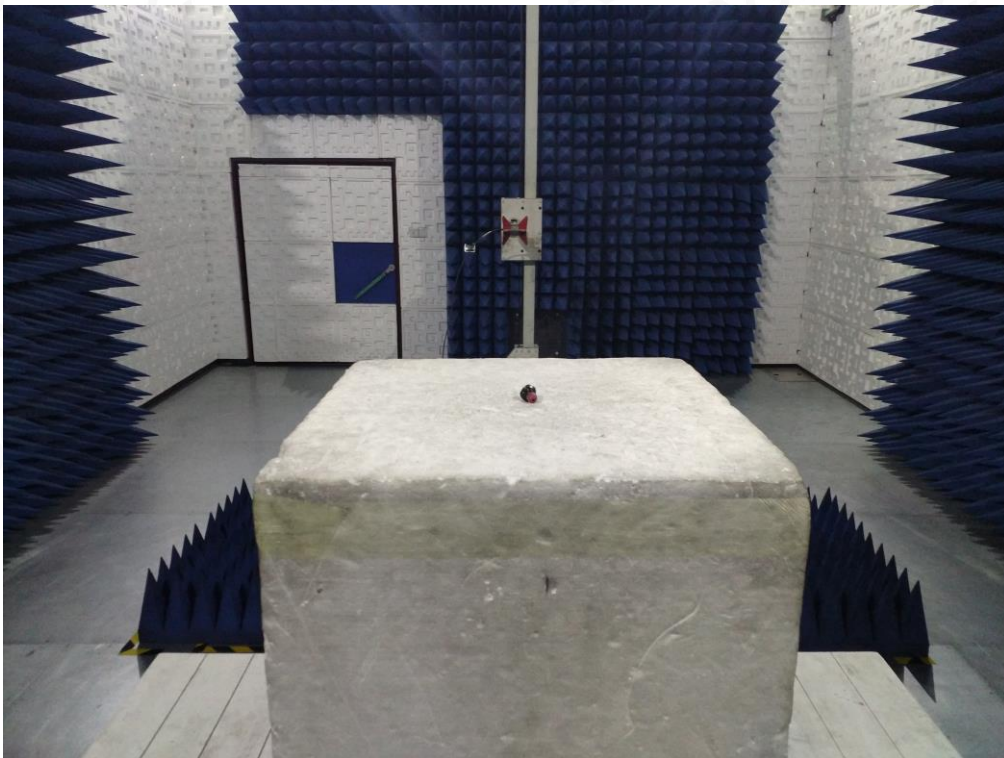
Add: 2/F., Building 2, No.1-4, Chaxi Sanwei Technical Industrial Park, Gushu, Xixiang, Bao'an District, Shenzhen, Guangdong, China  
Tel: +86-755 2523 4088 E-mail: agc@agc-cert.com Service Hotline:400 089 2118

## APPENDIX A: PHOTOGRAPHS OF TEST SETUP

### RADIATED EMISSION TEST SETUP BELOW 1GHZ



### RADIATED EMISSION TEST SETUP ABOVE 1GHZ



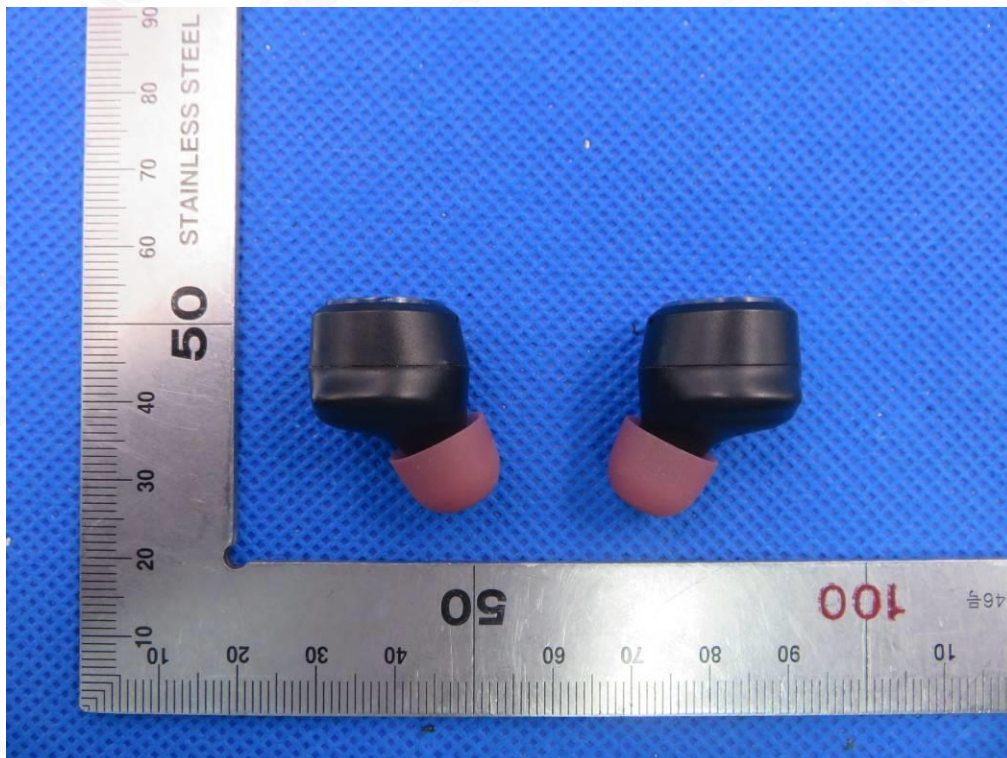


**APPENDIX B: PHOTOGRAPHS OF EUT**

ALL VIEW OF EUT



TOP VIEW OF EUT



Attestation of Global Compliance(Shenzhen)Co.,Ltd.

Add: 2/F., Building 2, No.1-4, Chaxi Sanwei Technial Industrial Park, Gushu,  
Xixiang, Bao'an District, Shenzhen, Guangdong, China

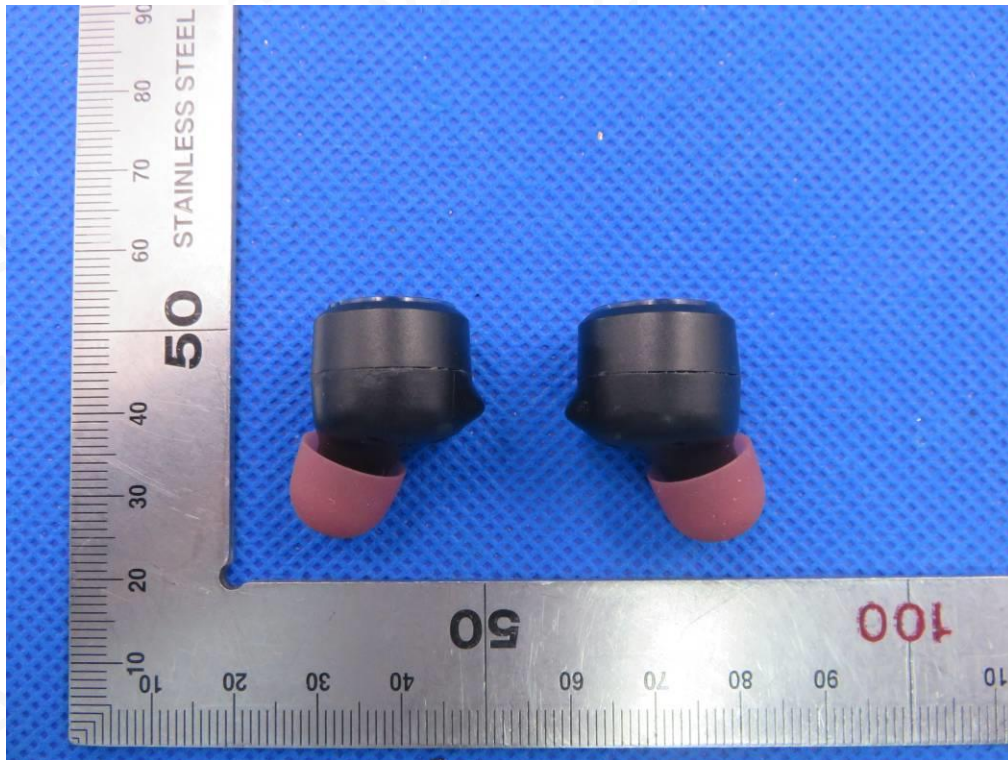
Tel: +86-755 2523 4088

E-mail: agc@agc-cert.com

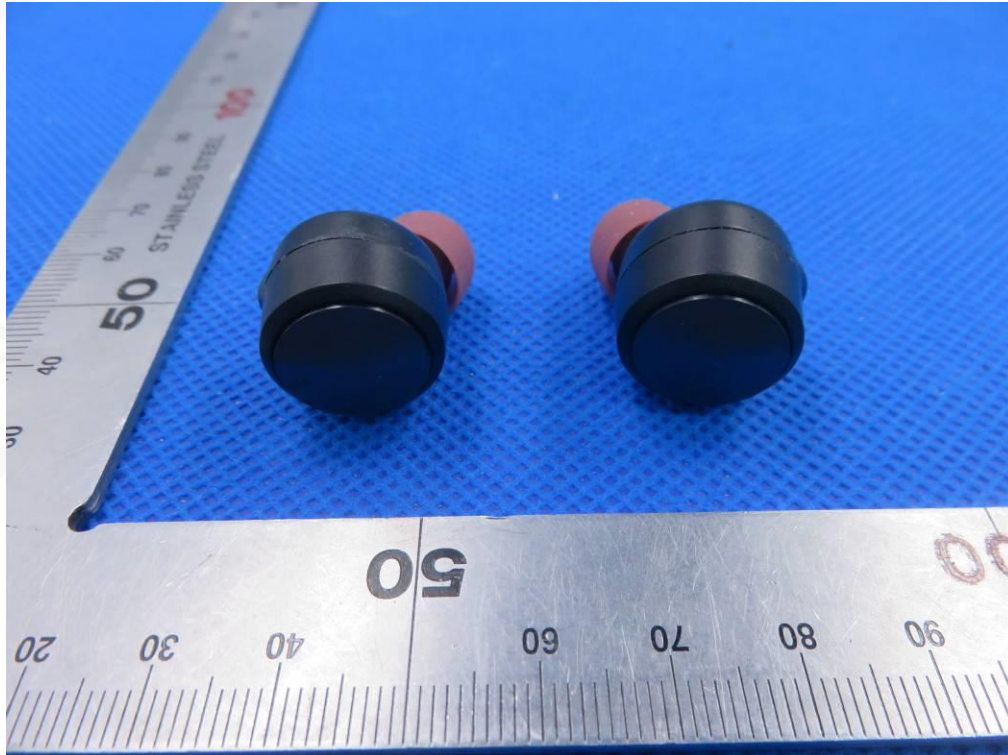
Service Hotline:400 089 2118



BOTTOM VIEW OF EUT



FRONT VIEW OF EUT



Attestation of Global Compliance(Shenzhen)Co.,Ltd.

Add: 2/F., Building 2, No.1-4, Chaxi Sanwei Technial Industrial Park, Gushu,  
Xixiang, Bao'an District, Shenzhen, Guangdong, China

Tel: +86-755 2523 4088

E-mail: agc@agc-cert.com

Service Hotline:400 089 2118



BACK VIEW OF EUT



LEFT VIEW OF EUT



Attestation of Global Compliance(Shenzhen)Co.,Ltd.

Add: 2/F., Building 2, No.1-4, Chaxi Sanwei Technical Industrial Park, Gushu,  
Xixiang, Bao'an District, Shenzhen, Guangdong, China

Tel: +86-755 2523 4088

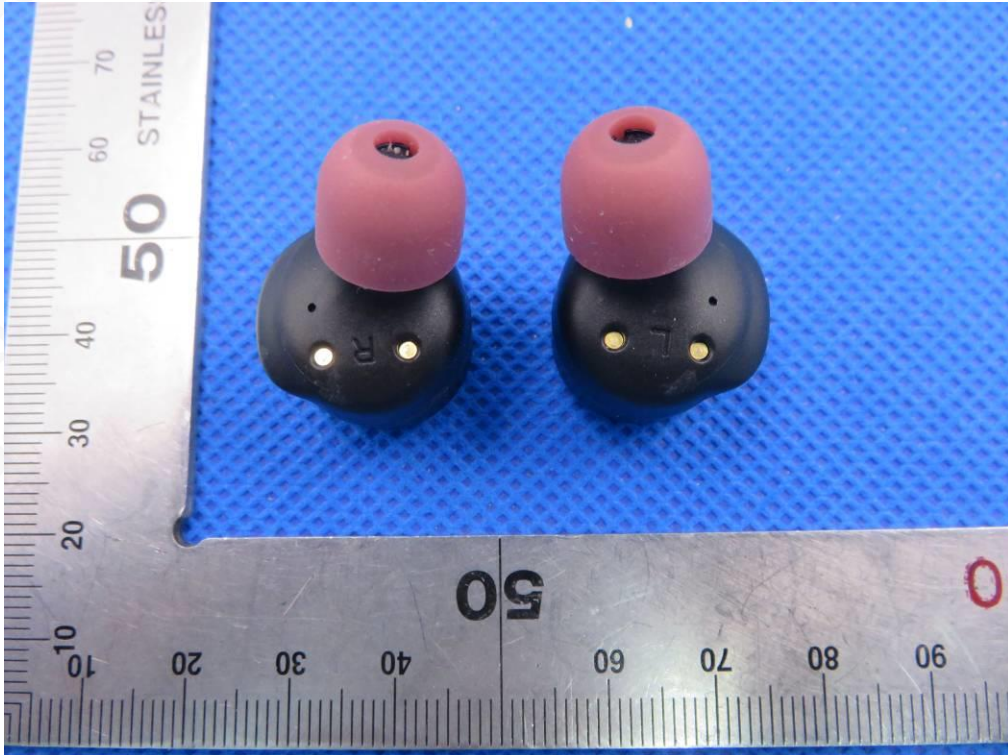
E-mail: agc@agc-cert.com

Service Hotline:400 089 2118

RIGHT VIEW OF EUT



VIEW OF EUT(PORT)



Attestation of Global Compliance(Shenzhen)Co.,Ltd.

Add: 2/F., Building 2, No.1-4, Chaxi Sanwei Technial Industrial Park, Gushu, Xixiang, Bao'an District, Shenzhen, Guangdong, China

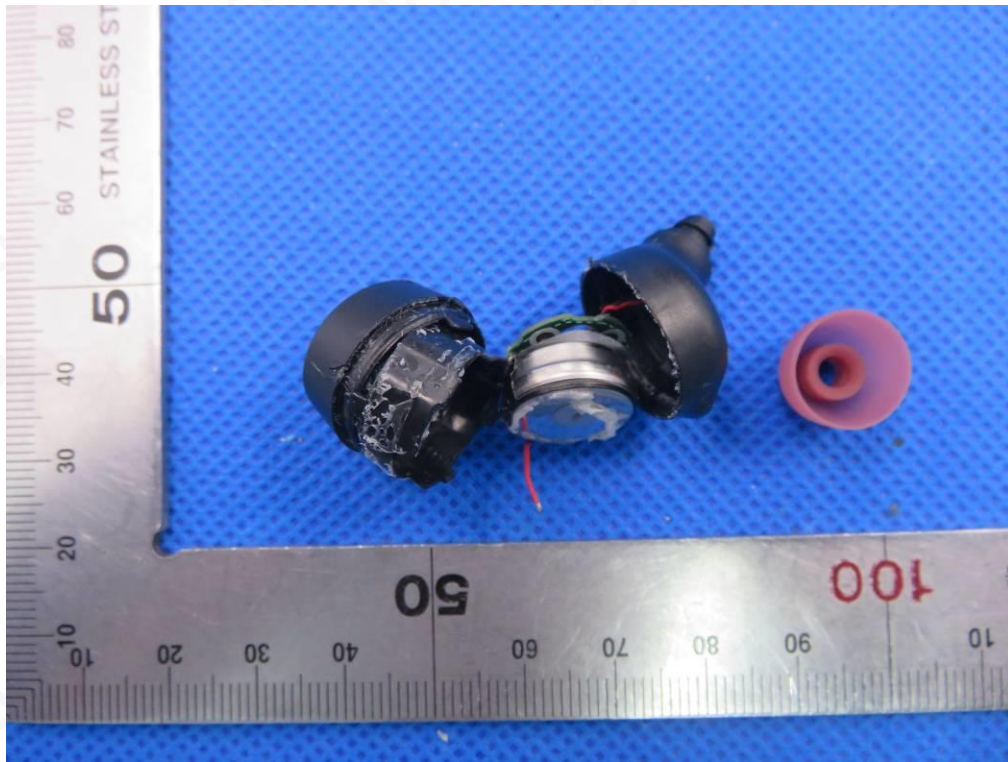
Tel: +86-755 2523 4088

E-mail: agc@agc-cert.com

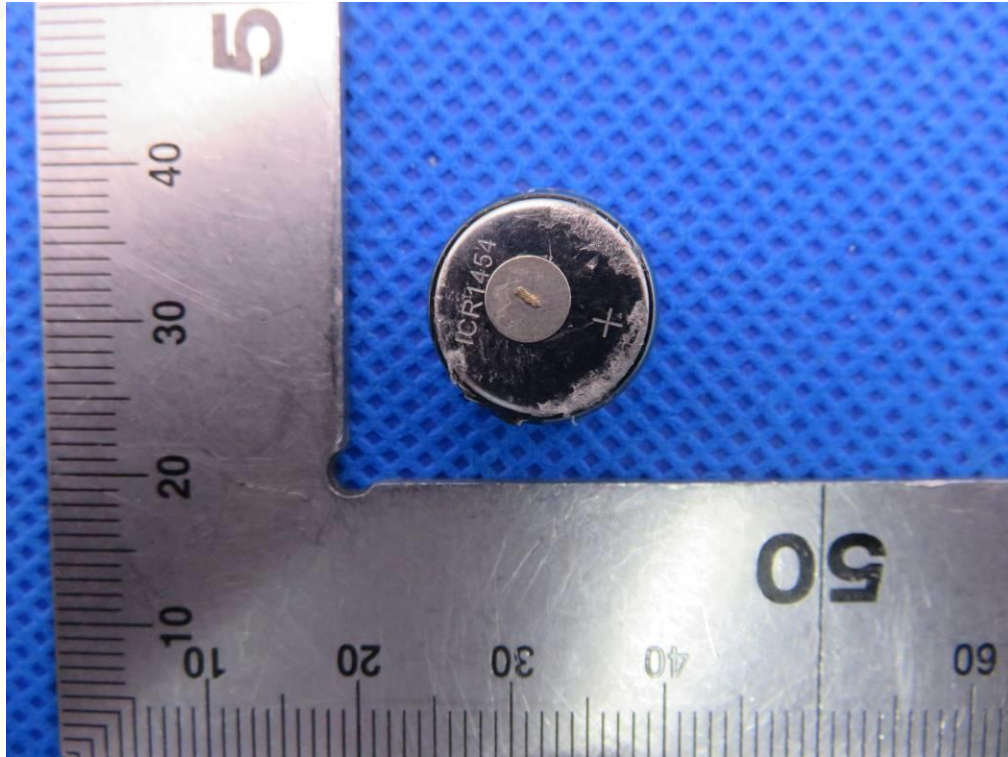
Service Hotline:400 089 2118



OPEN VIEW OF EUT(left)



VIEW OF BATTERY



Attestation of Global Compliance(Shenzhen)Co.,Ltd.

Add: 2/F., Building 2, No.1-4, Chaxi Sanwei Technial Industrial Park, Gushu, Xixiang, Bao'an District, Shenzhen, Guangdong, China

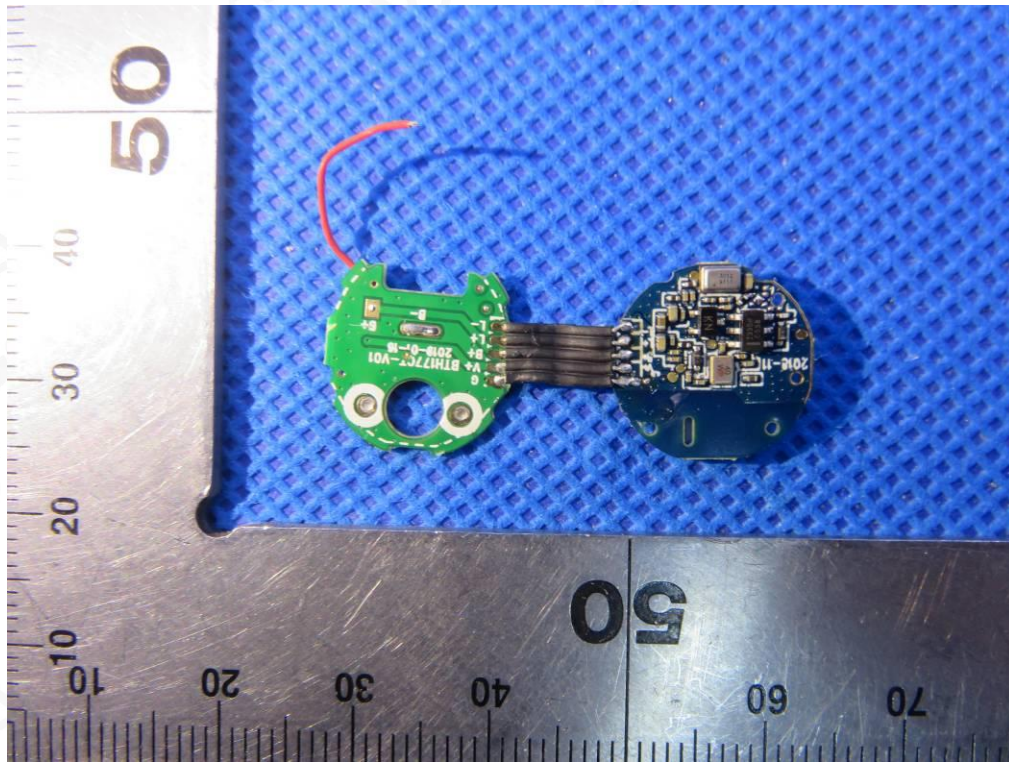
Tel: +86-755 2523 4088

E-mail: agc@agc-cert.com

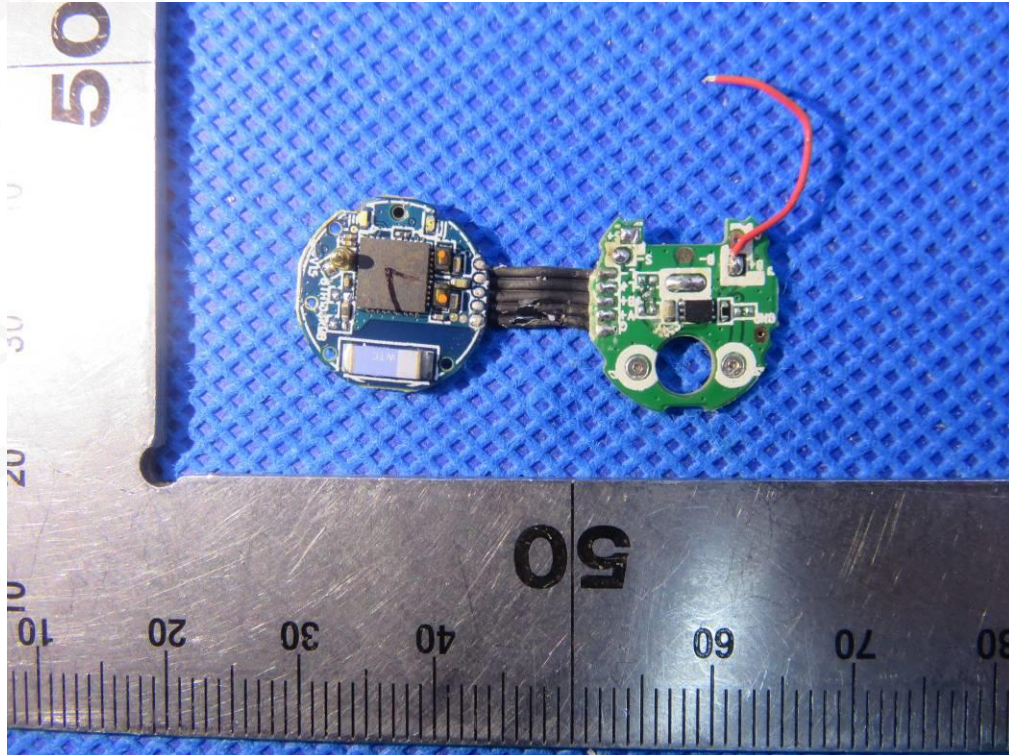
Service Hotline:400 089 2118



INTERNAL VIEW OF EUT-1

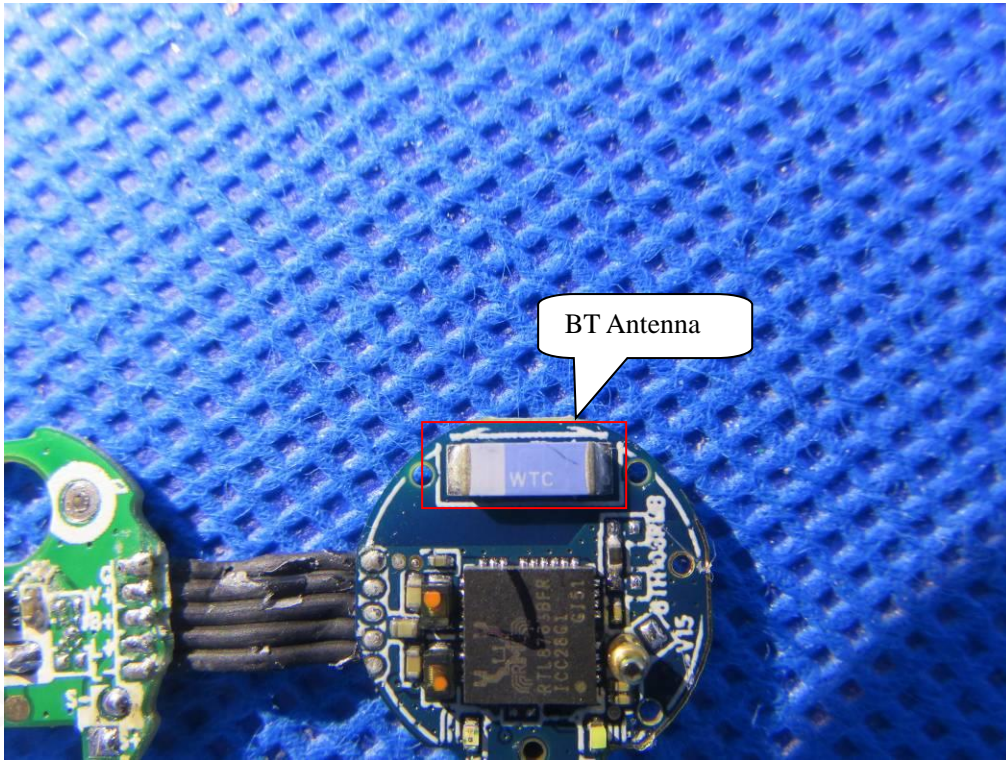


INTERNAL VIEW OF EUT-2

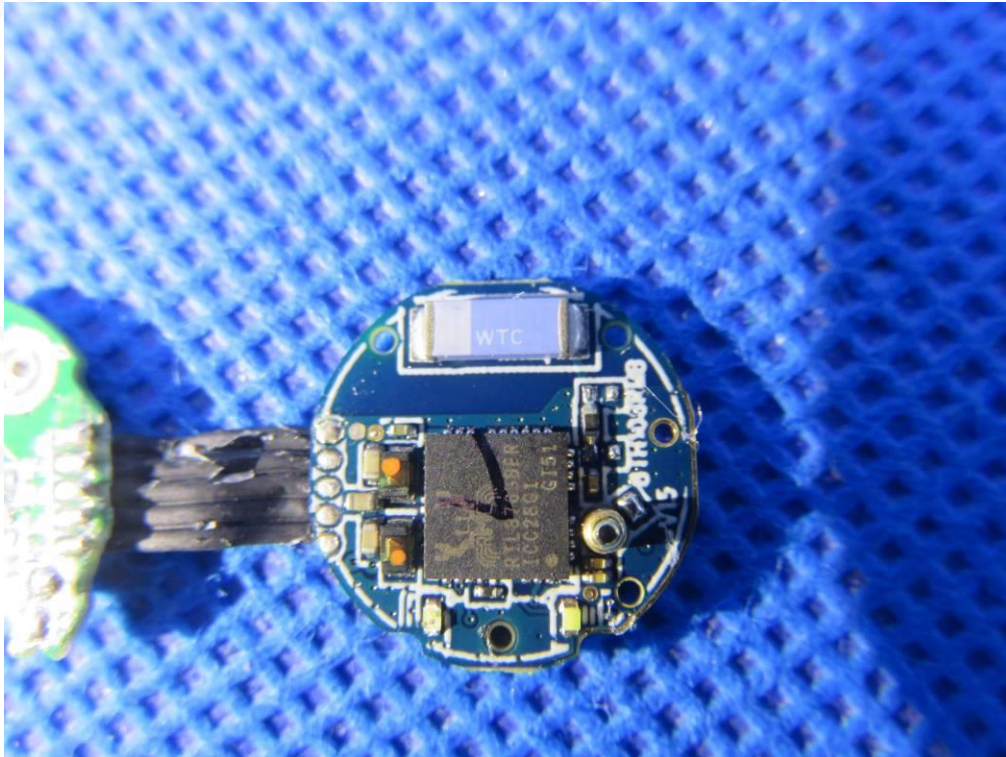




INTERNAL VIEW OF EUT-3

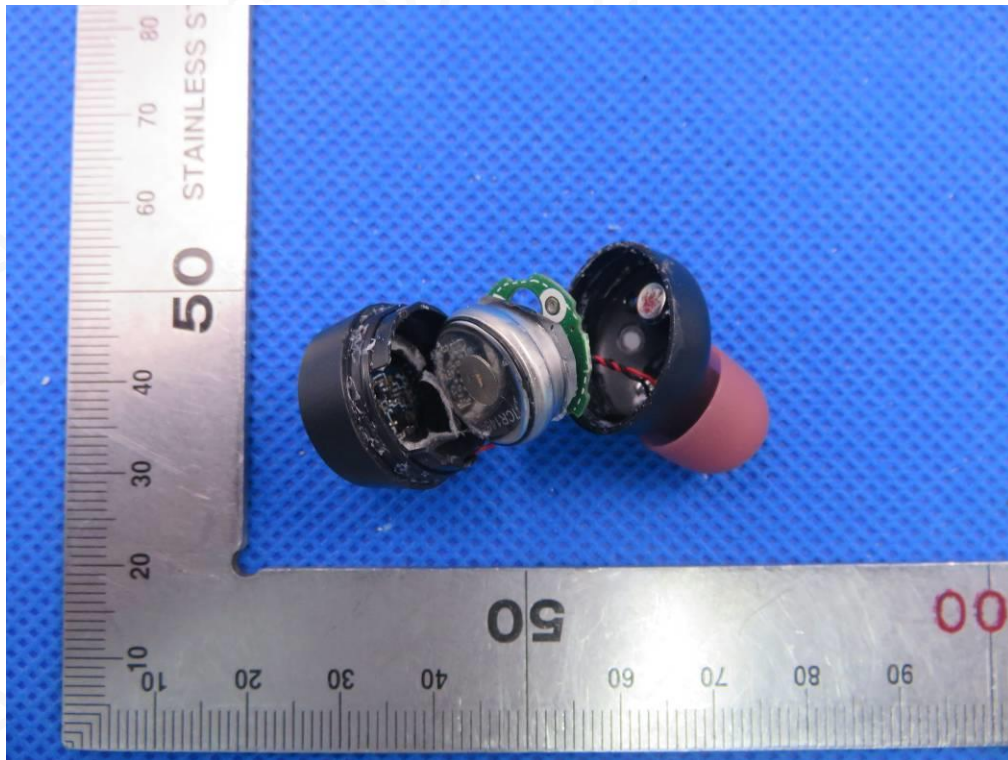


INTERNAL VIEW OF EUT-4

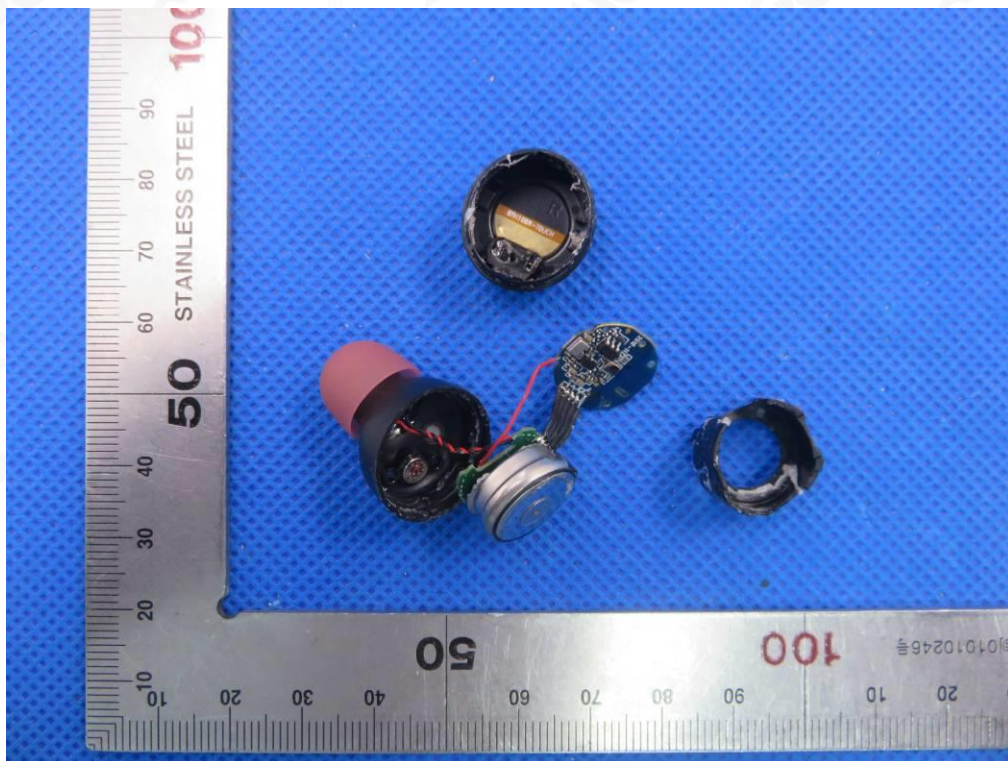




OPEN VIEW OF EUT-1(right)



OPEN VIEW OF EUT-2(right)



Attestation of Global Compliance(Shenzhen)Co.,Ltd.

Add: 2/F., Building 2, No.1-4, Chaxi Sanwei Technial Industrial Park, Gushu, Xixiang, Bao'an District, Shenzhen, Guangdong, China

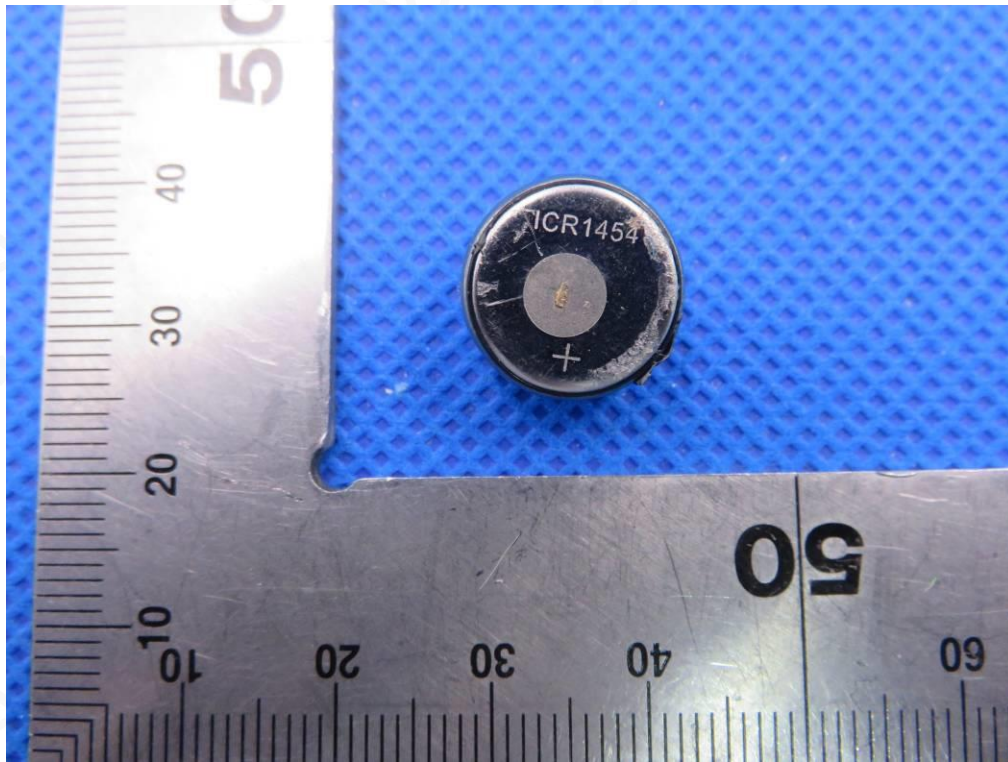
Tel: +86-755 2523 4088

E-mail: agc@agc-cert.com

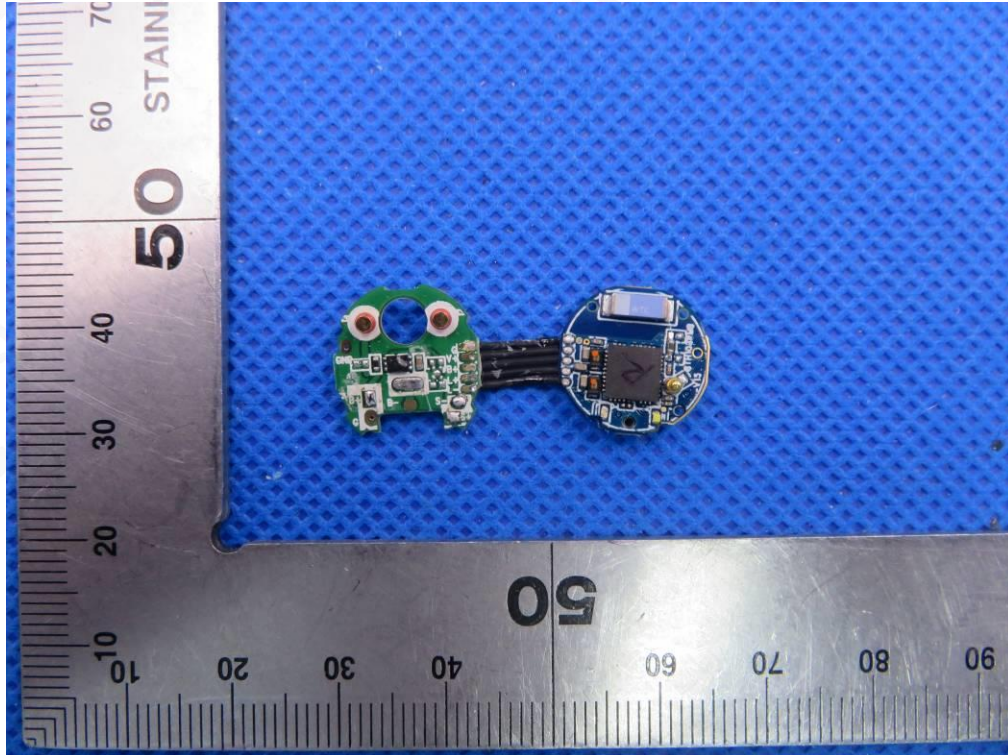
Service Hotline:400 089 2118



VIEW OF BATTERY



INTERNAL VIEW OF EUT-1



Attestation of Global Compliance(Shenzhen)Co.,Ltd.

Add: 2/F., Building 2, No.1-4, Chaxi Sanwei Technial Industrial Park, Gushu,  
Xixiang, Bao'an District, Shenzhen, Guangdong, China

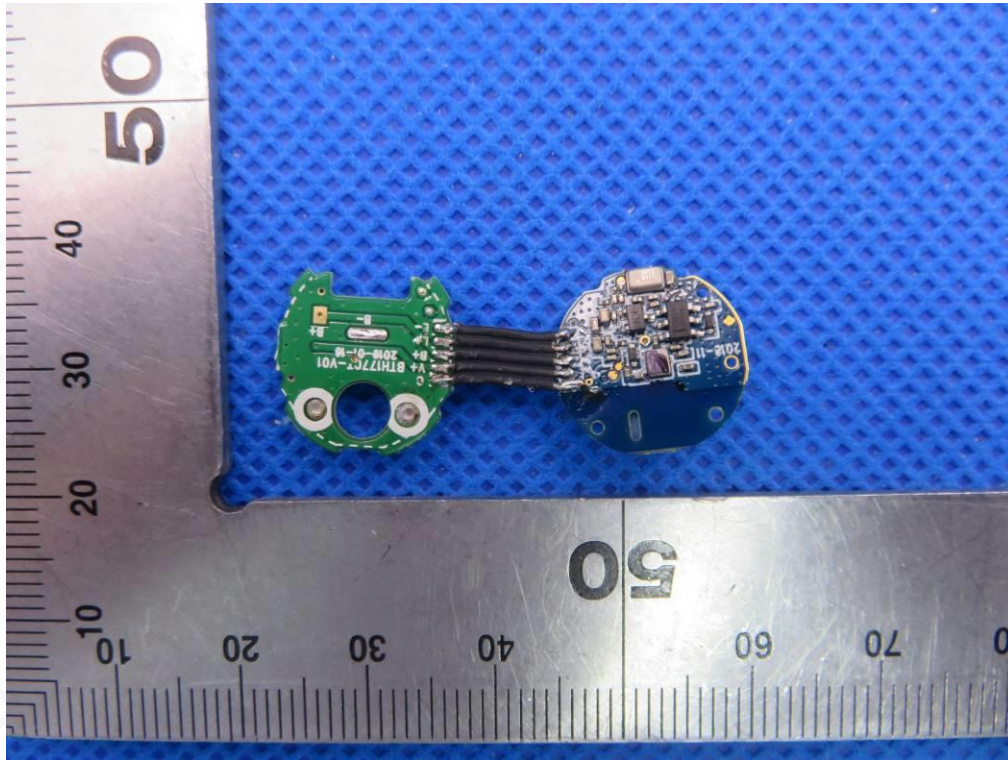
Tel: +86-755 2523 4088

E-mail: agc@agc-cert.com

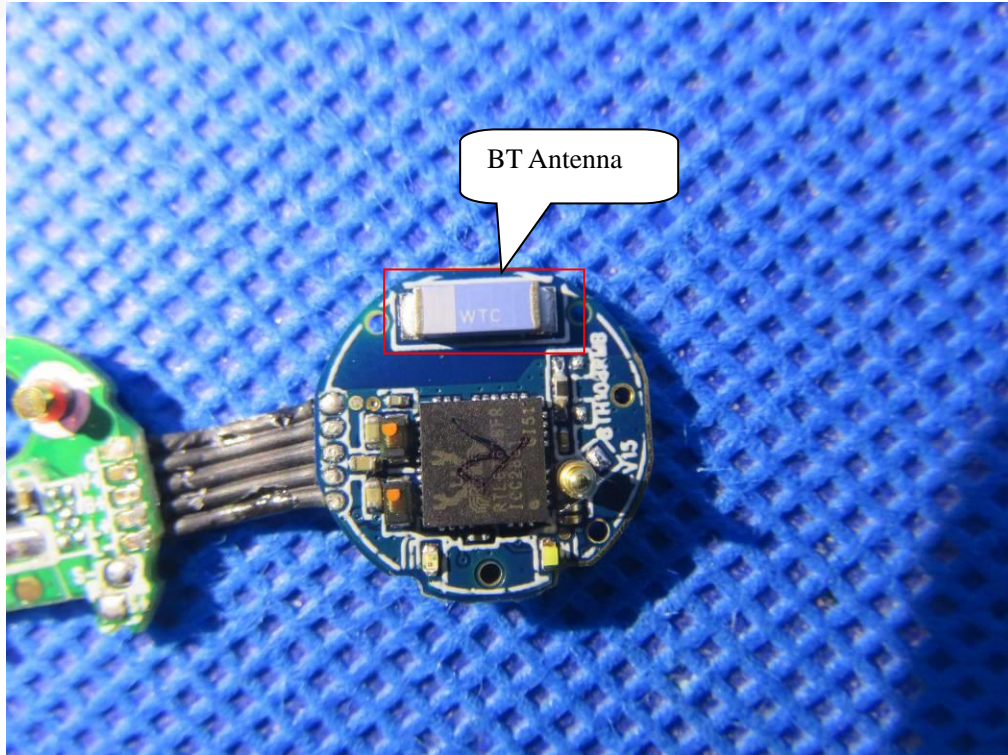
Service Hotline:400 089 2118



INTERNAL VIEW OF EUT-2

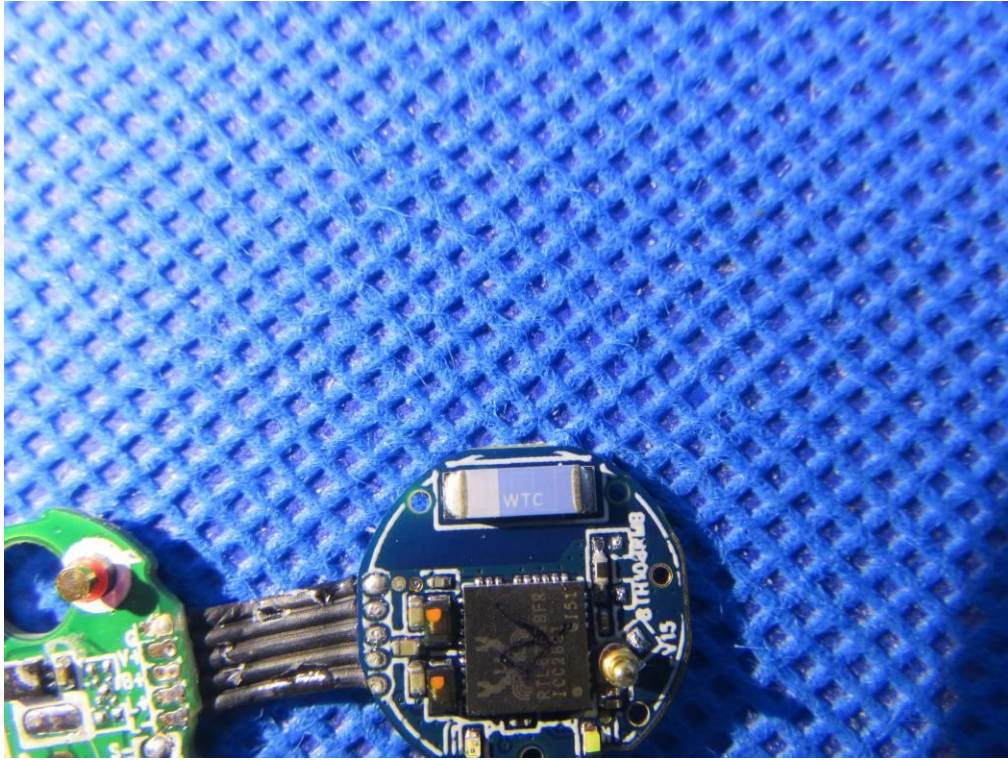


INTERNAL VIEW OF EUT-3





INTERNAL VIEW OF EUT-4



----END OF REPORT----



Attestation of Global Compliance(Shenzhen)Co.,Ltd.

Add: 2/F., Building 2, No.1-4, Chaxi Sanwei Technial Industrial Park, Gushu,  
Xixiang, Bao'an District, Shenzhen, Guangdong, China

Tel: +86-755 2523 4088

E-mail: agc@agc-cert.com

Service Hotline:400 089 2118