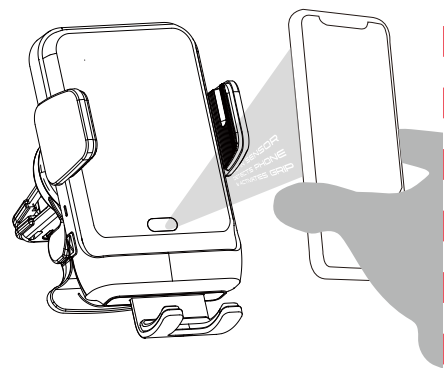


INFRARED SENSOR FAST WIRELESS CHARGER

Wireless Car Charger



B18 User Manual

Thank you for choosing B18 infrared sensor fast wireless charger of smart car phone holder product, to ensure the safe use and best performance, please read this user manual carefully.

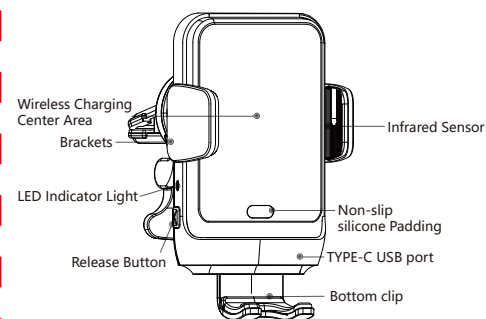
Package Contents

- B18 Smart Car Phone Holder × 1
- Air Vent Clip × 1
- USB TO TYPE-C Cable × 1
- User Manual × 1

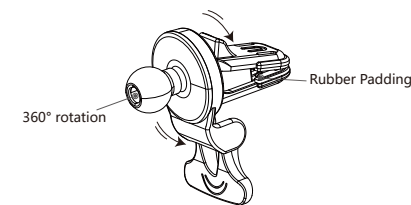
PRODUCT FEATURES

- Smart wireless charging.
- Automatic infrared sensor with telescopic arm.
- Provides a full 360 degree rotation to achieve any view angle.
- Over Temp Protection, Over Current Protection, Over/Under Volatage power, FOD.
- Compatible with most smartphones models with wireless charging. For other devices you can add a wireless charging receiver. (Users can buy according to your own needs).

Product Components (Car Phone Holder)

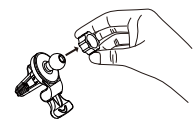


PRODUCT COMPONENTS (AIR VENT CLIP)

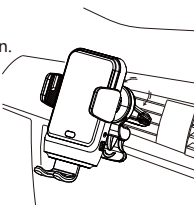
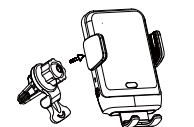


INSTRUCTIONS FOR INSTALLATION

1.Insert the ball adjuster of the air vent clip into the groove socket located on the back of the car phone holder and tight it.



2.Choose a suitable safe angle position in the air condition vent of the car, fix the air vent clip, lock the gear switch as required, and complete the installation.

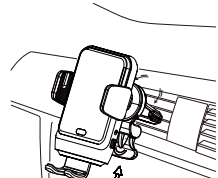


(注: 本产品不单独配备车载充电头, 用户可根据需要自行购买。若想实现7.5W/10W快速无线充电, 请务必使用QC2.0/QC3.0标准的车载充电头)

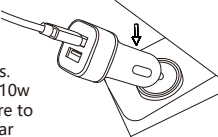
1.使用USB TO TYPE-C数据线连接车载手机支架和车载充电头, 并把车载充电头插入车载点烟器口; 或根据车内配置, 也可将数据线直接接入车内USB口使用。

INSTRUCTIONS FOR USE

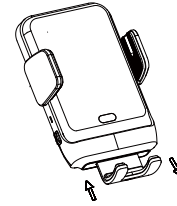
1.Use USB TO type-c cable to connect the car phone holder and car charging head, and insert the car charging head into the car cigarette lighter socket; or according to the car configuration, you can also just connect the USB cable into the car USB port for use.



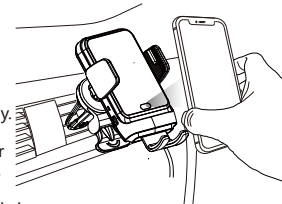
(Note: This product does not contain car charging head, user can buy it according to your own needs. If you want to achieve 7.5w/10w fast wireless charging, be sure to use QC2.0/QC3.0 standard car charging head.



2.The bottom clip of this holder is not automatically opening, but can adjust the height within the range of its travel. Users can adjust the height according to different phones, so that the phone is in the best charging position (the wireless charging area of the phone is aimed at the wireless charging center area of the holder).



3.When the phone is close to the infrared sensor of the car phone holder, the holder will open its brackets automatically. At this time, please immediately aim your phone at the wireless charging area of the holder, the holder will close the brackets automatically and clip tight of the phone, and enter into automatic wireless charging mode.



4. When the phone is in charging mode, the LED will be always blue to indicate it's working normally; When the phone is fully charged, the LED will turn on green; When the charger's interface has metallic foreign body or when the phone doesn't aim at the center area of car phone holder, the LED will flash blue light to indicate abnormal charging and FOD protection mode. In this case, please take off your phone and check whether the charger has metallic foreign body or reposition your phone to the wireless charging center area.

5. To release the phone just tap the left or right releasing button, the holder will open its brackets automatically. (When you tap the button, please ensure your hand is close to the brackets and hold the phone safely)

LED FUNCTIONS

LED INDICATION	MEANING
Solid Green Light	Harger standby Mode/Fully charged
Solid Blue Light	Device is charging
Blue Light Flashes	FOD Warning/Device not put in right area
LED Flashes 4 Times (Green, Blue, Blue, Green)	Power On

PRODUCT SPECIFICATIONS

MODEL:B18
TYPE-C Input: DC 5V-2A/DC 9V-1.67A
Output Power (wireless): 5W&7.5W&10W
Product Size: 121mm*73mm*55mm
Net Weight: 120g
Charging Frequency: 115-205KHZ
Max Charging Distance≤8mm
Power Conversion≥70%

SAFETY PRECAUTIONS

- Carefully inspect your charger before attempting to use for the first time
- Do not attempt to pierce, strike, or apply strong pressure with sharp or heavy objects. Strong impact or shocks could cause irreversible damage to the unit
- Do not operate the charger if it has been exposed to any liquid or if it is visibly wet or moist
- When charging, the charging contact surface on the phone's back cannot carry metal materials
- Always remember to unplug from your DC outlet when not using the charger.
- Keep the charger away from small children at all times, or ensure strict supervision by an adult at all times
- Do not expose the charger or any electrical parts to extremely high or low temperatures or high pressure. Do not expose the charger to fire, direct sunlight, or other hot location. This may cause the unit to generate heat, ignite, or explode. Using the charger this way may also result in a loss of performance and in a shortened life expectancy.
- Do not attempt to disassemble or modify the smart wireless charger car holder in any way.
- Do not put any cards with magnetic strips or chips close to this product to avoid demagnetization or damage the data inside the chip;
- Immediately discontinue use of the charger if it has any visibly exposed parts or appears malfunction in any way.

FCC WARNING

This device complies with part 15 of the FCC Rules. Operation is subject to the following two conditions: (1) this device may not cause harmful interference, and (2) this device must accept any interference received, including interference that may cause undesired operation.

Any changes or modifications not expressly approved by the party responsible for compliance could void the user's authority to operate the equipment.

NOTE: This equipment has been tested and found to comply with the limits for a Class B digital device, pursuant to Part 15 of the FCC Rules. These limits are designed to provide reasonable protection against harmful interference in a residential installation. This equipment generates, uses and can radiate radio frequency energy and, if not installed and used in accordance with the instructions, may cause harmful interference to radio communications.

However, there is no guarantee that interference will not occur in a particular installation.

If this equipment does cause harmful interference to radio or television reception, which can be determined by turning the equipment off and on, the user is encouraged to try to correct the interference by one or more of the following measures:

- Reorient or relocate the receiving antenna.
- Increase the separation between the equipment and receiver.
- Connect the equipment into an outlet on a circuit different from that to which the receiver is connected.
- Consult the dealer or an experienced radio/TV technician for help.

To maintain compliance with FCC's RF Exposure guidelines, This equipment should be installed and operated with minimum distance between 20cm the radiator your body: Use only the supplied antenna.