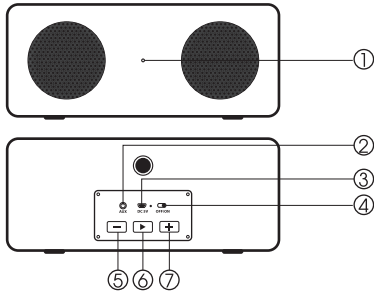


HYPE® QUICK START GUIDE

DELUXE PRO WIRELESS SPEAKER



FEATURES/PARTS

1. Microphone
2. AUX Input
3. Charge port (Micro USB)
4. OFF/ON Switch
5. Previous Song/Volume Decrease
6. Play/Pause/Call/Answer
7. Next Song/ Volume Increase

HYPE® QUICK START GUIDE

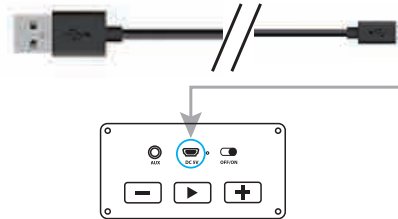
DELUXE PRO WIRELESS SPEAKER

CHARGING THE SPEAKER

Charge the speaker before using it for the first time.

Plug in the cable to the micro USB port and charge for 2 hours.

Connect the charging cable to charging port.

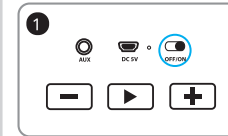


HYPE® QUICK START GUIDE

DELUXE PRO WIRELESS SPEAKER

PAIRING YOUR SPEAKER

Your speaker will work best if it is within 30 ft. of your smart device. You may experience sound briefly cutting off if you are out of range or if your wireless connection is weak. Make sure Bluetooth is enabled on your smart phone or tablet before starting the pairing process.



Turn on the speaker by flipping the Power Switch to the "On" position. The speaker will "beep" when it is ready to connect.

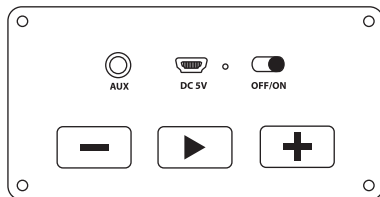


From your smart phone or tablet, find a list of nearby devices and choose "HY-WDW". Enter "0000" if asked. The speaker will "beep" again when pairing is complete!

HYPE® QUICK START GUIDE

DELUXE PRO WIRELESS SPEAKER

MEDIA KEY FUNCTIONS



- | | | |
|--|---|--|
| | Press Once - Play/ Pause music/ Answer Call/Hang Up | Press & Hold - Reject Call
Press Twice - Redial |
| | Press Once - Increase volume | Press & Hold - Next Track |
| | Press Once - Previous Track | Press & Hold - Decrease volume |

HYPE® QUICK START GUIDE

DELUXE PRO WIRELESS SPEAKER

FCC STATEMENT

This device complies with part 15 of the FCC Rules. Operation is subject to the following two conditions: (1) This device may not cause harmful interference, and (2) this device must accept any interference received, including interference that may cause undesired operation.

Please note that changes or modifications not expressly approved by the party responsible for compliance could void the user's authority to operate the equipment.

FCC INSTRUCTIONS FOR A CLASS B DIGITAL DEVICE OR PERIPHERAL

Note: This equipment has been tested and found to comply with the limits for a Class B digital device, pursuant to part 15 of the FCC Rules. These limits are designed to provide reasonable protection against harmful interference in a residential installation. This equipment generates, uses and can radiate radio frequency energy and, if not installed and used in accordance with the instructions, may cause harmful interference to radio communications. However, there is no guarantee that interference will not occur in a particular installation. If this equipment does cause harmful interference to radio or television reception, which can be determined by turning the equipment off and on, the user is encouraged to

HYPE® QUICK START GUIDE

DELUXE PRO WIRELESS SPEAKER

try to correct the interference by one or more of the following measures:

- Reorient or relocate the receiving antenna.
- Increase the separation between the equipment and receiver.
- Connect the equipment into an outlet on a circuit different from that to which the receiver is connected.
- Consult the dealer or an experienced radio/TV technician for help.

FCC Radiation Exposure Statement

The device has been evaluated to meet general RF exposure requirement.

The device can be used in portable exposure condition without restriction.

WARRANTY

This product is covered by a 3 month limited manufacturer's warranty. Contact us if you have any problems at support@dglusa.com.

WARNING

Keep away from water and moisture.
Keep away from heat sources.
Do not disassemble.

FCC: 2A052-5B601BT
BT ID: D034634