

**NOTE:**

Operating multiple vehicles with the same frequency in close proximity will cause interference and poor performance. Works best away from electrical hazards and large obstacles.  
 Do not put objects or fingers near the front or rear of the wheels while it is turning.  
 Vehicle may not run properly on rough terrain. Make sure objects do not get obstructed in the wheels.  
 Avoid hard crashes.  
 Never give the vehicle or controller to any child under the age of 3 as it contains small parts.  
 When not in use, remove batteries from compartments.  
 Normal working distance is about 26 feet (8 meters).

**TROUBLE SHOOTING**

PROBLEMS	REASONS	SOLUTIONS
Running Problems	Battery inside the controller is weak	Replace with new Alkaline batteries.
	There is a weak or low reception to the controller.	
	Battery inside the vehicle is weak.	Recharge vehicle in the controller.
Operating Problems	Small object obstructs movement of the tire.	Use tweezers to remove obstruction.
	Vehicle driven on carpet and has fabric threads caught in the wheels.	Operating on carpet is not recommended. Run vehicle on a flat and hard surface.
Other	Vehicle does not respond to the controller.	Make sure the vehicle is linked to the controller. Operate in close proximity to the controller.
	The controller's frequency is disrupted by something around the environment.	Some other equipment using the same radio wave could disrupt transmission. Either run the vehicle in different location or turn off the other equipment.

**PLEASE NOTE:**

This equipment has been tested and found to comply with the limits for a Class B digital device, pursuant to part 15 of the FCC Rules. These limits are designed to provide reasonable protection against harmful interference in a residential installation. This equipment generates, uses and can radiate radio frequency energy and, if not installed and used in accordance with the instructions, may cause harmful interference to radio communications. However, there is no guarantee that interference will not occur in a particular installation. If this equipment does cause harmful interference to radio or television reception, which can be determined by turning the equipment off and on, the user is encouraged to try to correct the interference by one or more of the following measures:

- Reorient or relocate the receiving antenna.
- Increase the separation between the equipment and receiver.
- Connect the equipment into an outlet on a circuit different from that to which the receiver is needed.
- Consult the dealer or an experienced radio/TV technician for help.



**MADE IN CHINA**



**5+**  
MADE IN CHINA

**RAPID RACER**  
Radio Control Vehicle

**INSTRUCTION MANUAL**

**\*IMPORTANT:** IF VEHICLE DOES NOT RESPOND PROPERLY, PLEASE CHARGE BATTERIES IN VEHICLE AND REPLACE BATTERIES IN CONTROLLER (4-AA NOT INCLUDED).

**\*\* NOTE: THE MANUFACTURER IS NOT RESPONSIBLE FOR ANY RADIO OR TV INTERFERENCE CAUSED BY UNAUTHORIZED MODIFICATIONS TO THIS EQUIPMENT. SUCH MODIFICATIONS COULD VOID THE USER'S AUTHORITY TO OPERATE THE EQUIPMENT.**

**WARNING:** Changes or modifications to this unit not expressly approved by the party responsible for compliance could void the user's authority to operate the equipment.

This device complies with Part 15 of the FCC Rules. Operation is subject to the following two conditions:  
 1. This device may not cause harmful interference, and  
 2. This device must accept any interference received, including interference that may cause undesired operation.

**DO NOT MIX ALKALINE, STANDARD (CARBON-ZINC), OR RECHARGEABLE BATTERIES.**

**DO NOT MIX OLD AND NEW BATTERIES.**

**DO NOT DISPOSE OF BATTERIES IN FIRE, BATTERIES MAY EXPLODE OR LEAK.**

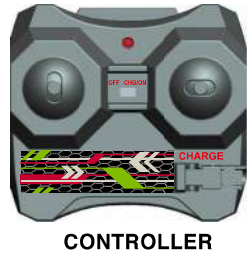
**REQUIRES 4-AA BATTERIES IN CONTROLLER (NOT INCLUDED).**

COLORS AND DECORATIONS MAY VARY. KEEP CONTENT DETAILS FOR FUTURE REFERENCE.

## CONTENT LIST



**VEHICLE**  
(RALLY CAR or RALLY TRUCK)



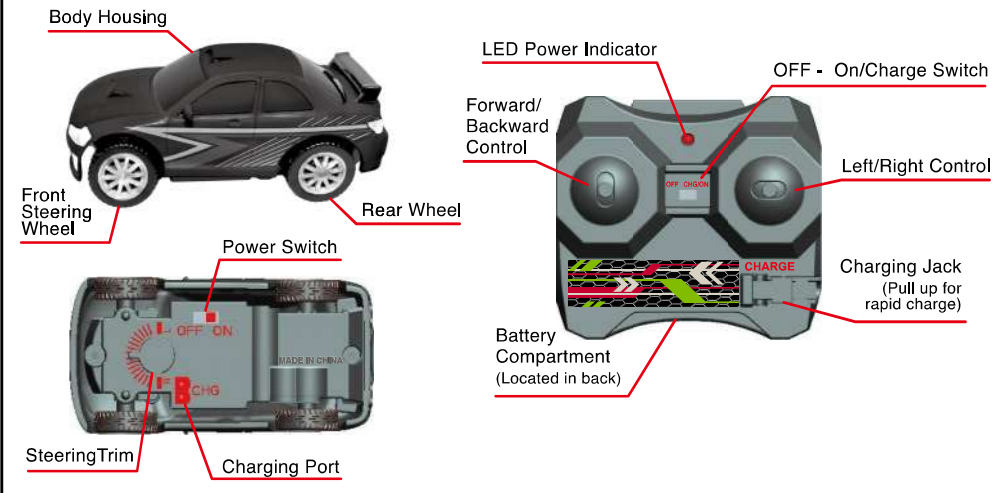
**CONTROLLER**

To prevent damage, the contents of the package listed are properly packed and may be out of plain sight. Please remove all contents in packaging.

**CAUTION:**  
DO NOT MODIFY TOY IN ANY WAY. ADULT SUPERVISION IS ADVISED!

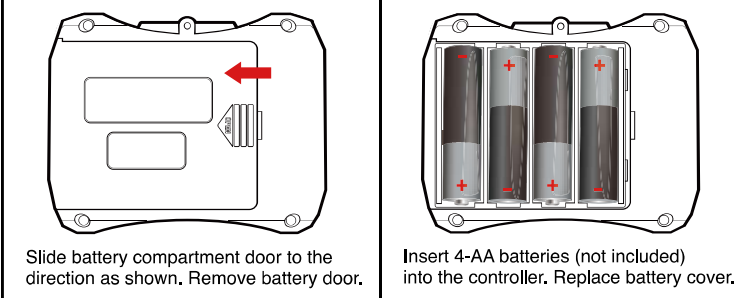
## GETTING TO KNOW YOUR VEHICLE

Diagram #1



## CONTROLLER BATTERY INSTALLATION

Diagram #2



DO NOT MIX ALKALINE, STANDARD (CARBON ZINC) OR RECHARGEABLE BATTERIES

DO NOT MIX OLD AND NEW BATTERIES

DO NOT DISPOSE OF BATTERIES IN FIRE, BATTERIES MAY EXPLODE OR LEAK.

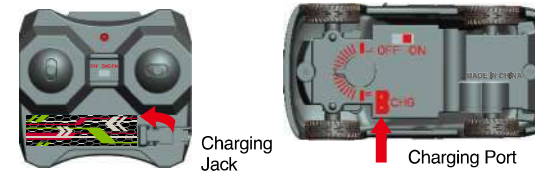
### PLEASE NOTE:

- Make sure batteries are inserted correctly (+ or -) into the controller.
  - If the vehicle does not respond properly, please replace the alkaline batteries in controller or recharge vehicle battery.
- Remember to take out all batteries from the controller if vehicle will not be used for a long period.

## CHARGING YOUR VEHICLE

Diagram #3

### To charge vehicle:



- Turn controller switch to ON/CHG (LED Power Indicator should be lit).
- Turn the vehicle power switch to OFF.
- Pull charging jack out on the controller. Connect the charging port at the bottom of the vehicle.
- LED power indicator should be blinking while charging.
- When the LED power indicator is solid red, the vehicle is fully charged.

**NOTE:** CHARGING USUALLY TAKES ABOUT 15 MINUTES FOR A 15 MINUTE RUN TIME. DO NOT CHARGE MORE THAN THIS. NEW BATTERIES ARE REQUIRED ON THE CONTROLLER ONCE RUN TIME START TO DECREASE. WHEN THE BATTERIES ARE LOW, THE LED POWER INDICATOR WILL BEGIN FLASHING.

**NOTE:** AFTER 10 MINUTES OF INACTIVITY, THE CONTROLLER AND VEHICLE WILL GO INTO SLEEP MODE. ONCE IN SLEEP MODE, YOU MUST TURN THE VEHICLE OFF AND ON AGAIN, AND GO THROUGH LINKING PROCEDURE (SEE BELOW SECTION).

### REMEMBER:

Before recharging the battery, wait 10-15 minutes to let the battery cool down.  
Never leave unattended while charging.

## DANGER!

NEVER INSERT ANY SHARP OBJECTS, PINS OR SCREWS INTO THE VEHICLE AS THIS MAY PUNCTURE THE INTERNAL BATTERY.

### Caution:

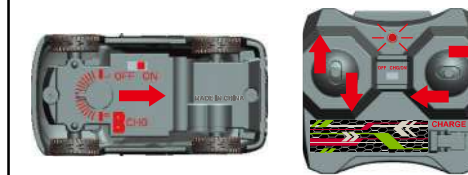
- Make sure to always use new or fully charged batteries in controller.
- Do not operate the vehicle if it becomes damaged in any way.
- Try not to crash vehicle as it may cause damage.
- Check the area is clear of any obstacles before operating.
- Adult supervision is always recommended.
- Never operate near animals. Keep vehicle away from fingers, hair, eyes, and other body parts. Stay away from obstacles and electrical hazards.

### Warning:

- Non-rechargeable batteries are not to be recharged.
- Rechargeable batteries are only to be charged under adult supervision.
- Rechargeable batteries are to be removed from the toy before being charged.
- Different types of batteries or new and used batteries are not to be mixed.
- Batteries are to be inserted with correct polarity.
- Exhausted batteries are to be removed from the toy.
- The supply terminals are not to be short-circuited.

## HOW TO LINK YOUR VEHICLE

Diagram #4



- Switch vehicle to ON position.
- Turn controller switch to ON/CHG. The LED power indicator should blink fast.
- When connection is established, the LED power indicator will be solid red.
- To check if the vehicle and controller are linked, slowly move the forward/backward or left/right control stick. Once the vehicle is responsive, it is ready to operate.
- If the vehicle does not respond, turn both power switch in controller and vehicle to OFF and repeat above steps 1 and 2.

## OPERATING YOUR VEHICLE

Diagram #5

### Using the vehicle:

- Switch vehicle to ON position.
- Turn controller switch to ON/CHG.
- Place the vehicle on the ground and use the forward/ backward or left/right control stick to maneuver.
- If the vehicle does not respond, see above section on how to link your vehicle.
- If vehicle pulls to one side or the other, simply adjust the steering trim located at the bottom of the vehicle.
- When done operating, return both vehicle and controller switch to OFF position.
- When not being used for an extended amount of time, remove batteries on the controller.

### DANGER!

NEVER TOUCH THE WHEELS WHEN THEY ARE TURNING.  
NEVER INSERT ANY SHARP OBJECTS, PINS OR SCREWS INTO THE VEHICLE AS THIS MAY PUNCTURE THE MOTOR OR BATTERY!

