

Quick Start Guide

wireless power bank



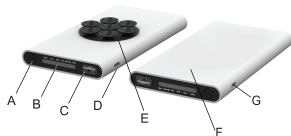
FULLY CHARGE BEFORE FIRST USE

Charge your portable devices with this convenient 4000 mAh emergency charger. Use the charging cable that came with your device to power up.

WHAT'S INCLUDED

1. Wireless Portable Charger
2. Micro USB Cable
3. Manual

GETTING TO KNOW YOUR CHARGER



CONTROLS

- A.ON/OFF Switch
- B.Power Display
- C.USB Output Port
- D.Micro USB Recharge Port
- E.Wireless Output
- F.Wireless Input
- G.Type-C Input Port

SPECIFICATIONS

1. Battery Capacity: 4000 mAh
2. Input:DC 5V /2A
3. Output:DC 5V/2.1A
- 4.Wireless Output: 5V/1A Max
- 5.Wireless Input: 5V/0.75A Max

CHARGING YOUR PORTABLE DEVICES

STEP 1: Push power button to turn on charger (double press to turn off)

STEP 2: Charge your device via charging cable or wirelessly.

- Charging Cable: Plug your cable into the USB port of the power bank and connect the other end of the cable to your device.

- Wirelessly: Place your device centered on the suction cups to charge wirelessly.

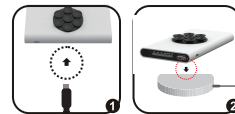


RECHARGING THE PORTABLE CHARGER

Option 1: Charge your portable charger via charging cable. You can charge your charger with a Micro USB or Type-C cable.

Option 2: Charge your portable charger wirelessly by placing the "Charge Powerbank" imprint side down onto a wireless charging pad.

NOTE: Power will display 25%, 50%, 75%, 100% when charge and discharge .



FCC Statement

Changes or modifications not expressly approved by the party responsible for compliance could void the user's authority to operate the equipment.

This equipment has been tested and found to comply with the limits for a Class B digital device, pursuant to Part 15 of the FCC Rules. These limits are designed to provide reasonable protection against harmful interference in a residential installation. This equipment generates uses and can radiate radio frequency energy and, if not installed and used in accordance with the instructions, may cause harmful interference to radio communications. However, there is no guarantee that interference will not occur in a particular installation. If this equipment does cause harmful interference to radio or television reception, which can be determined by turning the equipment off and on, the user is encouraged to try to correct the interference by one or more of the following measures:

- Reorient or relocate the receiving antenna.
- Increase the separation between the equipment and receiver.
- Connect the equipment into an outlet on a circuit different from that to which the receiver is connected.
- Consult the dealer or an experienced radio/TV technician for help

This device complies with part 15 of the FCC rules. Operation is subject to the following two conditions (1) this device may not cause harmful interference, and (2) this device must accept any interference received, including interference that may cause undesired operation.