

Battery Powered / Wireless / **S5W**
Active Loudspeaker System

Quick Start Guide



aurender
THE FUTURE OF SOUND

STEP 1: In the Box

S5W (Left and Right) Speakers, Remote control, USB dongle, Android USB-OTG cable, DC 24V adapter (x 2), Antenna (x 2), and Quick Start Guide



Speaker(L)



Speaker(R)



Android USB-OTG cable



Remote control



USB dongle



DC 24V adapter (x2)



Antenna (x2)

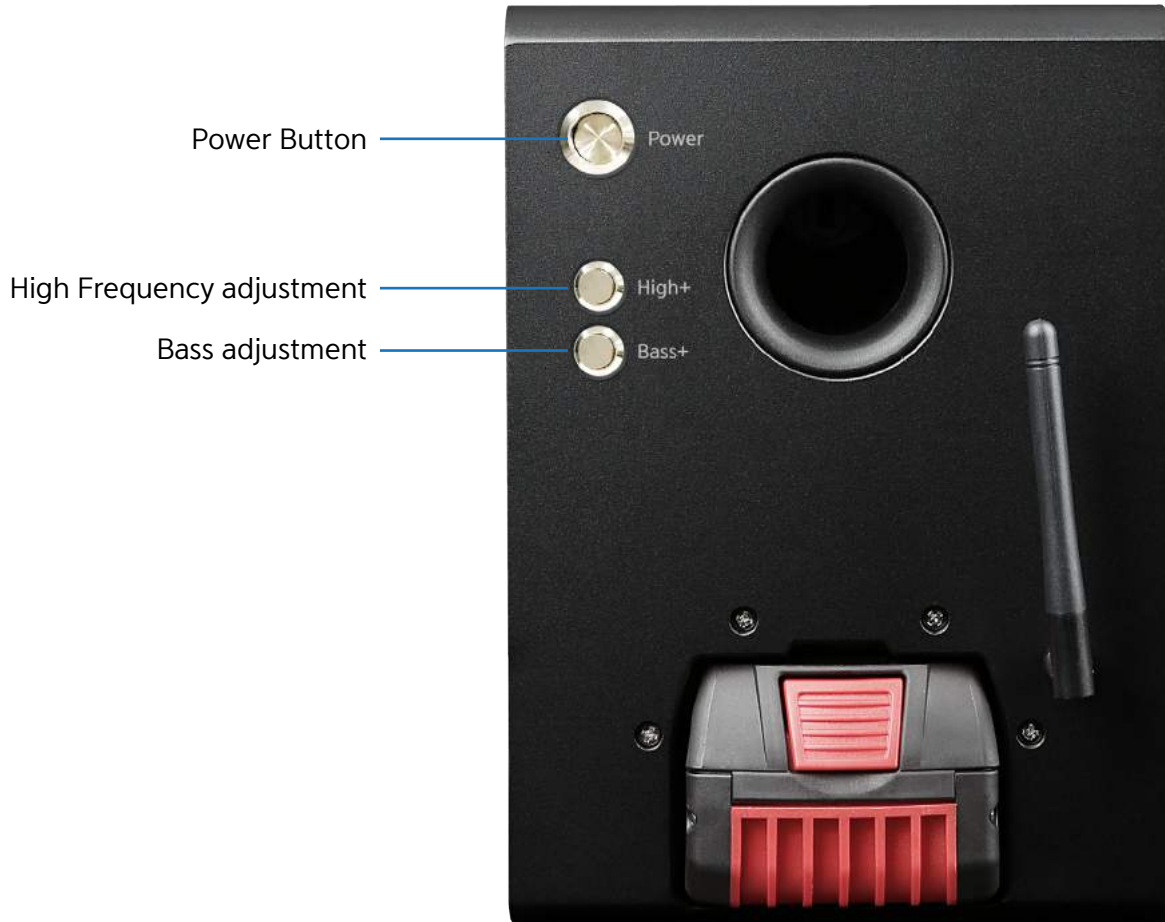


Quick Start Guide

* Batteries, a battery charger, or an Apple camera kit are not included and must be purchased separately.

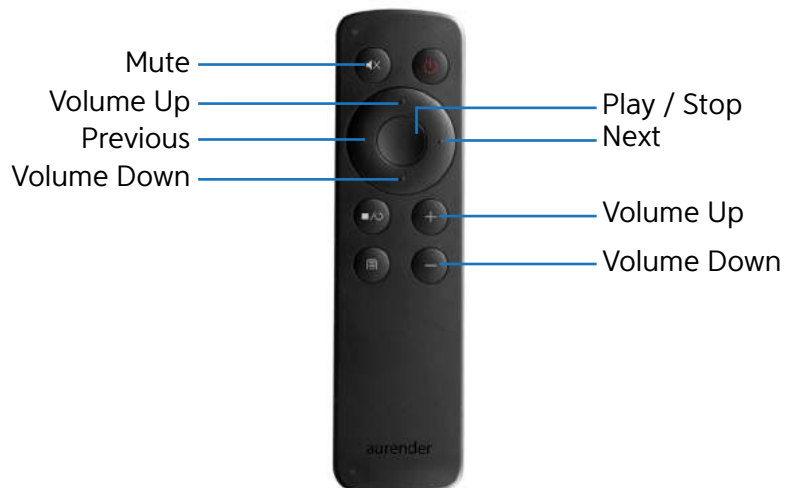
STEP 2: Setup

Speaker Rear



* The battery is not included, must purchase separately.

Remote



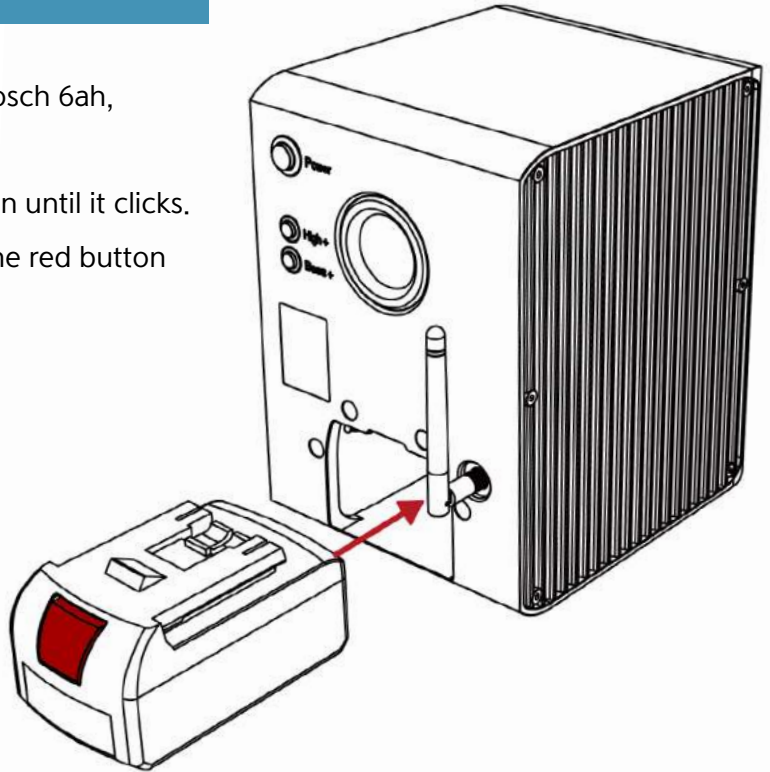
The speaker will activate when remote buttons are pressed (the LED will blink).

STEP 2: Setup

1. The position of the speakers is indicated by the L (Left) or R (Right) label located on the rear. Place the speakers appropriately, connect the power adapters or insert the batteries, and turn the power on using the power button.

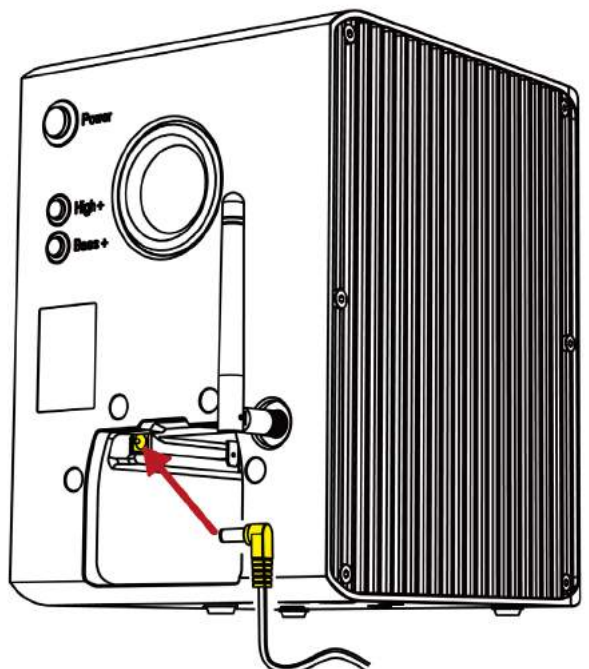
Using Battery Power

- The recommended battery is the Bosch 6ah, 18V BAT622 Lithium Ion Battery.
- When inserting the battery, press it in until it clicks.
- When removing the battery, press the red button on the battery and it will release.



When using the power adapter

- When using the power supply (DC adapter), connect the power cable as shown in the image:
- Do not insert battery when using the AC power adapter.



STEP 2: Setup

2. Connect the USB dongle to a USB port on your smartphone or computer.

When using the USB dongle with a smartphone, you will need one of the cables shown below:



Android USB-OTG cable



Apple USB Camera Kit cable
(purchase separately)

Precautions

1. If the speaker is installed within 39in (1m) of a wireless router, there may be radio interference.
2. The smartphone used must have a stable connection ie: not loose, for best performance.
3. Certain models of smartphones may not be supported.
4. Reduce volume on smartphone before playing music to avoid a sudden loud noise burst which can cause damage to the speaker. It is recommended to set the volume to a moderate level, play music, and adjust to the appropriate volume level afterwards.

STEP 3: Operation

Front LED display




- Green : Battery capacity is sufficient
- Red: Battery charging is required
- Repeated blinking Green: Either reception is lost, or the USB dongle is awaiting a signal from the source.

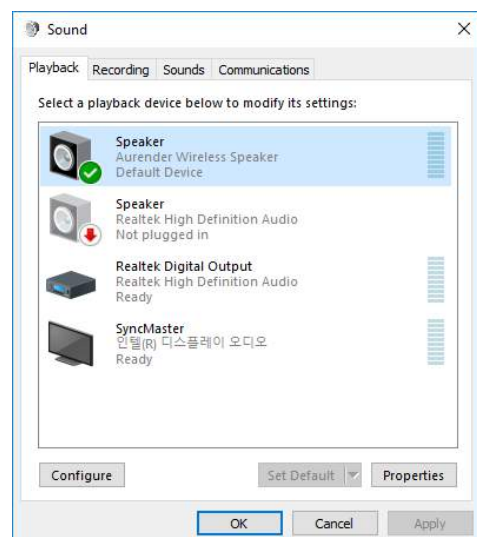
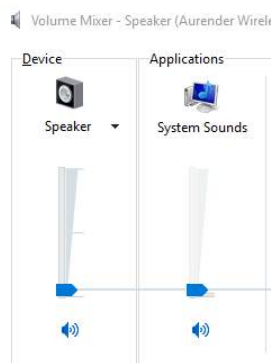
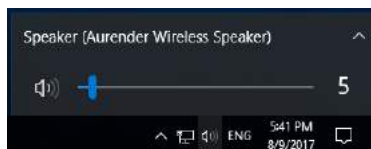
Using on a laptop/PC

When you insert a transmitting dongle into a USB port, it is recognized automatically by Windows, Mac OS X, or Linux OS and can be used immediately.

Using in Windows OS


Click on the speaker icon  in the lower right corner, press the mixer to select “Aurender Wireless Speaker” from the available devices, or select “Aurender Wireless Speaker” using Control Panel (Start> Control Panel> Sound menu) and select "Default Device".

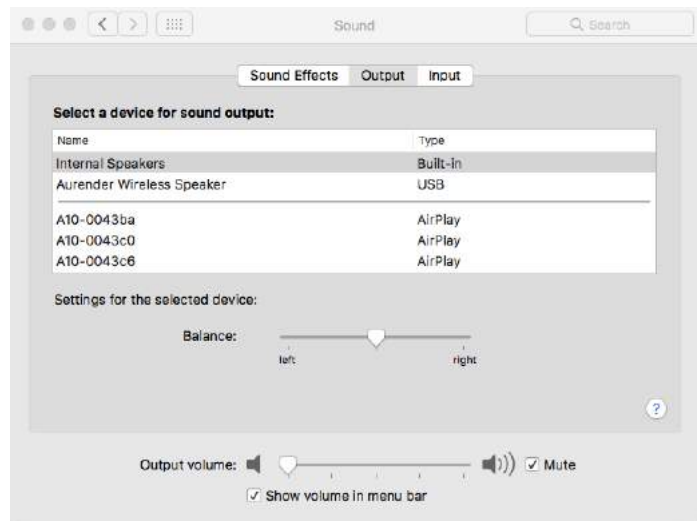
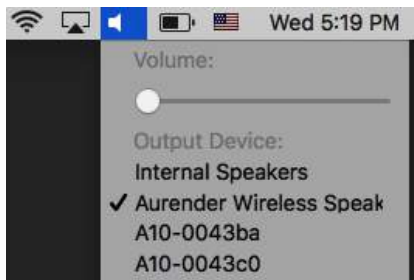
Note: When connecting to the computer for the first time, the volume is set to 50, so please adjust it to 5 ~ 10.



STEP 3: Operation

Using with Mac OSX

Select the Aurender Wireless Speaker by clicking  on the speaker icon located on the top right of the menu bar, while holding down the “alt/option” key. Alternatively, you can choose “Aurender Wireless Speaker” using System Preferences (System Preferences> Sound> Output menu: Select a device : Aurender Wireless Speaker)



Using with iPhone/iPad

Use the Apple USB Camera Kit to connect the USB dongle. Play music on your iPhone / iPad and the sound will output to the S5W wireless speakers.



USB Dongle



Apple USB Camera Kit cable
(purchase separately)

STEP 3: Operation

Using with Android

Use the Android USB-OTG cable to connect the USB dongle. Play music on your Android smartphone and the sound will output to the S5W wireless speakers.

* Recommended Android App : USB Audio Player Pro



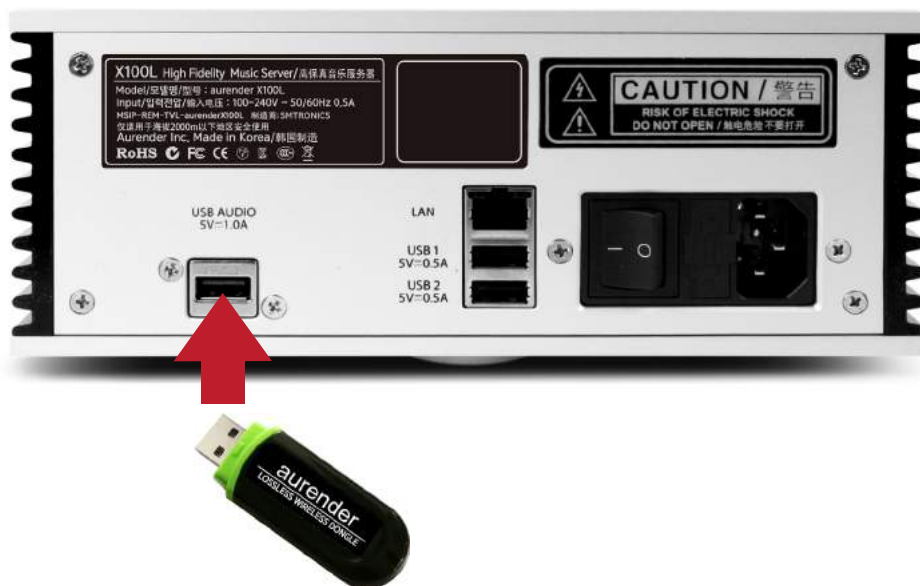
USB Dongle



Android USB-OTG cable

Using with an Aurender music server

If you would like to use the S5W with an Aurender music server, simply insert the USB Dongle into the Aurender's USB audio port. The Aurender must have system software version 4.9.3 or 5.9.3 and iPad Conductor App version 2.1.115 or later in order to work properly.



USB Dongle

SPECIFICATION

Power Supply	DC24V/2A adaptor or Bosch battery 18V/6Ah
Input	Wireless Audio Stream from USB dongle
Tweeter	1 inch, 4 ohm dome tweeter
Mid-Woofer	4.5 inch, 8 ohm woofer
Bass Load	Bass reflex
Acoustic Sensitivity	85.5dB at 2.83V/1m
Freq Range	2406 ~ 2476 MHz
Crossover	Digital Crossover 2.0 KHz 4th. order
Amplifier	Built-in, 2x50 W amplifier
Size/Weight	220mm(h) x 156mm(w) x 185mm(d) / 5.2 kg
Accessory	Transmitter USB dongle / Manual / DC Power adaptor / Remote Ctrl.
Battery (with Bosch 18V/6Ah)	Continuous playback time: 50 hours (playback time may vary depending on volume / sound source) IDLE:> 30 days

"This device can be operated in at least one Member State without infringing applicable requirements on the use of radio spectrum."

FCC ID : 2A02TAURENDERS5W

This device complies with part 15 of the FCC Rules. Operation is subject to the following two conditions: (1) This device may not cause harmful interference, and (2) this device must accept any interference received, including interference that may cause undesired operation.

This equipment has been tested and found to comply with the limits for a Class B digital device, pursuant to part 15 of the FCC Rules. These limits are designed to provide reasonable protection against harmful interference in a residential installation. This equipment generates, uses and can radiate radio frequency energy and, if not installed and used in accordance with the instructions, may cause harmful interference to radio communications. However, there is no guarantee that interference will not occur in a particular installation. If this equipment does cause harmful interference to radio or television reception, which can be determined by turning the equipment off and on, the user is encouraged to try to correct the interference by one or more of the following measures:

Reorient or relocate the receiving antenna.

Increase the separation between the equipment and receiver.

Connect the equipment into an outlet on a circuit different from that to which the receiver is connected.

Consult the dealer or an experienced radio/TV technician for help.

Changes or modifications not expressly approved by the party responsible for compliance could void the user's authority to operate the equipment.

This device complies with RF exposure requirement.

Caution(Product: Speaker)

This device should be installed and operated with minimum 20 cm between the radiator and your body.

Customer Service : support@arenders.com

Arenders America Inc.
2519 W. Woodland Dr. Anaheim, CA 92801 USA

(Korea) Arender Inc.
#1212, Obiz Tower, 126, Beolmal-ro, Dongan-gu, Anyang-si
Gyeonggi-do, South Korea / ZIP 14057

iPad, Airport Extreme are trademarks of Apple Inc.
Windows is a trademark of Microsoft Inc.

All registered trademarks belong to their respective owners.

CBB00-0033

aurender

THE FUTURE OF SOUND