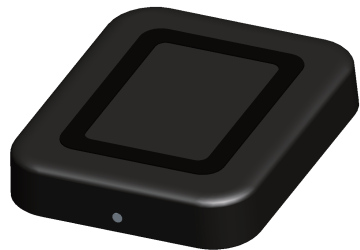


# Wireless Charger

Model:56021-01

## User Guide



### Thank you for purchasing and using this product!

Please read this Operation Instruction carefully and keep it properly before using this product.

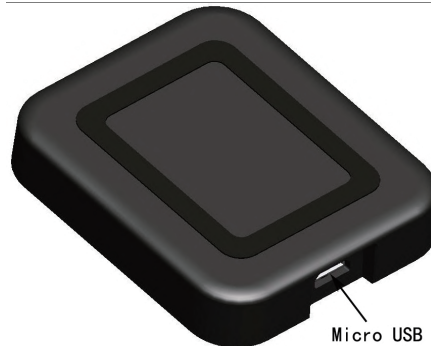
### Product Specification

.Input:5V/ 1.5A  
.Output:5V/0.5A  
.Working Power:2.5W  
.Working Distance:3mm  
.Charging Efficiency:70%  
.Standard:Qi  
.Quality:Quality and meet CE/FCC/ROHS  
.Operation frequency:124.38kHz-206.46kHz  
.H-field:21.27dBμA/m at 3m  
.Hardware:56021-01-RevA  
.Software:56021-01-RevA

### Application Devices

Compatible with Peregrine

FCC ID:2AO24-56021-01



### ⚠ Attention

1. Please keep the charger away from water or other liquid.
2. If you need to clean the charger, please make sure it is not connected power supply.
3. Using Environment temperature remains -20~50℃

Hereby, Sharewater declares that the radio equipment type smartwatch wireless charger is in compliance with Directive 2014/53/EU. The full text of the EU declaration of conformity is available at the following internet address: [www.sharewater.com](http://www.sharewater.com)

This equipment has been tested and found to comply with the limits for a WPC device, pursuant to Part 15 of the FCC Rules.

These limits are designed to provide reasonable protection against harmful interference in a residential installation.

### ⚠ Caution

Changes or modifications not expressly approved by the party responsible for compliance could void the user's authority to operate the product.

**Note:** This equipment has been tested and found to comply with the limits for a wireless power charger, pursuant to Part 15 of the FCC Rules. These limits are designed to provide reasonable protection against harmful interference in a residential installation. This equipment generates, uses and can radiate radio frequency energy and, if not installed and used in accordance with the instructions, may cause harmful interference to radio communications. However, there is no guarantee that interference will not occur in a particular installation. If this equipment does cause harmful interference to radio or television reception, which can be determined by turning the equipment off and on, the user is encouraged to try to correct the interference by one or more of the following measures:

- Reorient or relocate the receiving antenna.
- Increase the separation between the equipment and receiver.
- Connect the equipment into an outlet on a circuit different from that to which the receiver is connected.
- Consult the dealer or an experienced radio/TV technician for help.

This equipment complies with FCC radiation exposure limits set forth for an uncontrolled environment. This equipment should be installed and operated with minimum distance 20cm between the radiator and your body. This transmitter must not be co-located or operating in conjunction with any other antenna or transmitter.

### Manufacturer Information

Name:Shearwater Research Inc

Address:Unit 250 13155 Delf Place Richmond

BC Canada V6V2A2

Importer Information

Name:FINISTERRE UK LIMITED

Address:UNIT 6 WHEAL KITTY WORKSHOPS

ST. AGNES,CORNWALL, UK,TR5 0RD

This device complies with Part 15 of the FCC Rules. Operation is subject to the following two conditions: (1) this device may not cause harmful interference, and (2) this device must accept any interference received, including interference that may cause undesired operation.

