

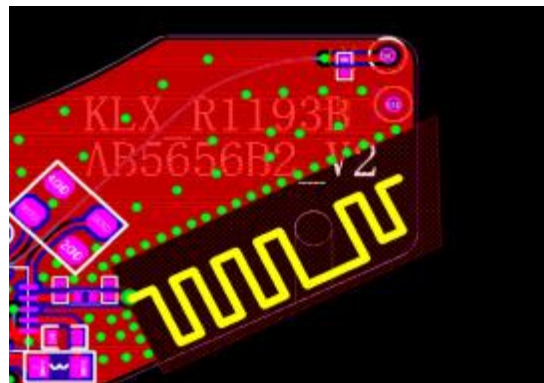
Product specification

Quick Reference Date

	Antenna module on the system board	
Frequenc Range	2400 ~ 2500GHz	
Ant. Port Input Pwr. (dBm)	0 (Typ. BT class 2 output power)	
Tot. Rad. Pwr. (dBm)	-1.2 (Input pwr – loss pwr)	
Peak EIRP(dBm)	1.2	
Directivity (dBi)	2.69(all direction antenna)	
Efficiency (dB)	30.88%	
Gain (dBi)	1.2 (Avg Gain XY-plane)	
Maximum Power (dBm)	1.2 (XY-plane)	
Minimum Power)	-4(XY-plane)	
Avg. Power (dBm)	-0.5(XY-plane)	
Input Impedence(ohm)	50	
Polarization Type	Vertical & Horizontal	
V. S.W. R	< 1.4	

All the technical data and information contained herein are subject to change without prior notice

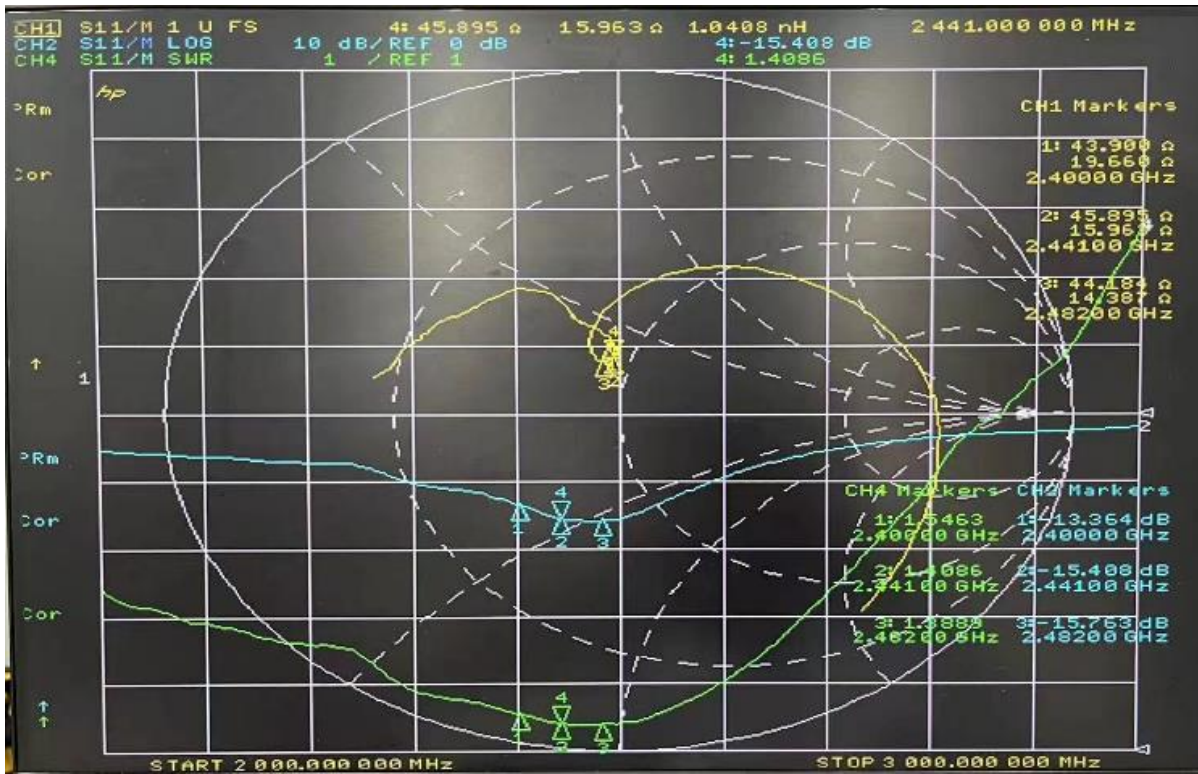
Antenna Layout & module on the system board



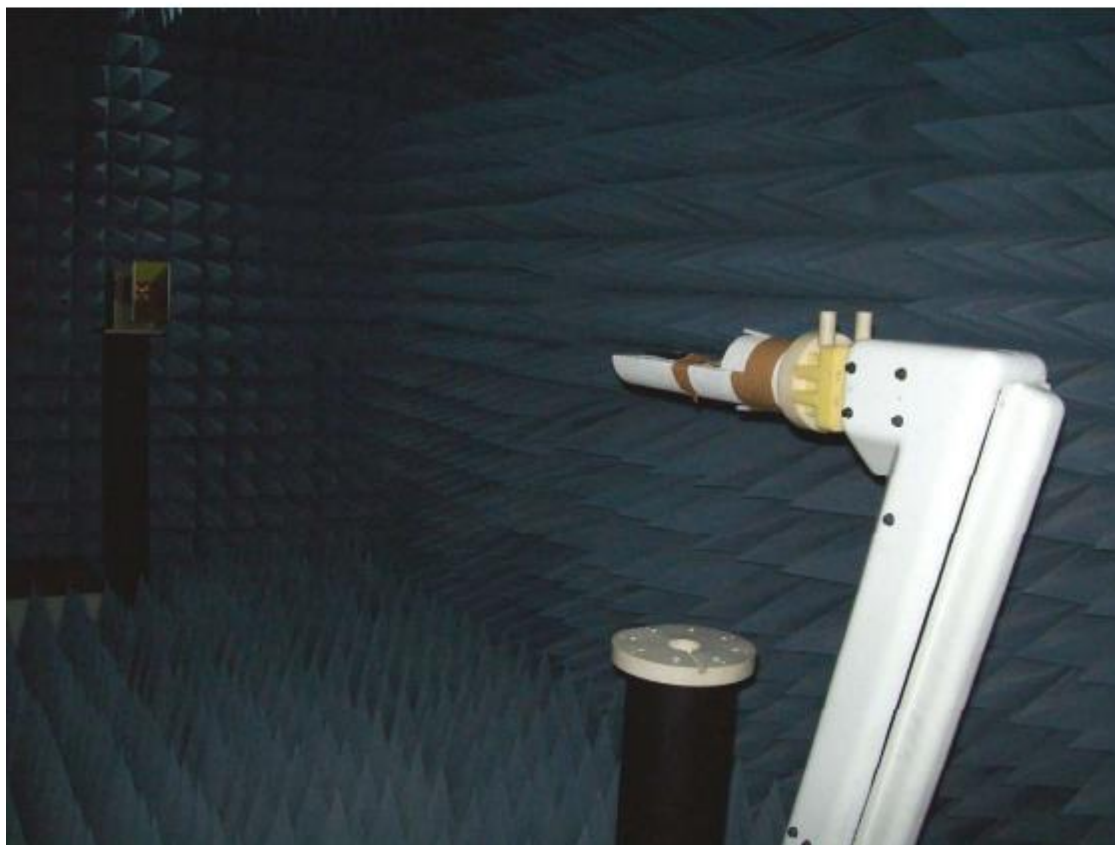
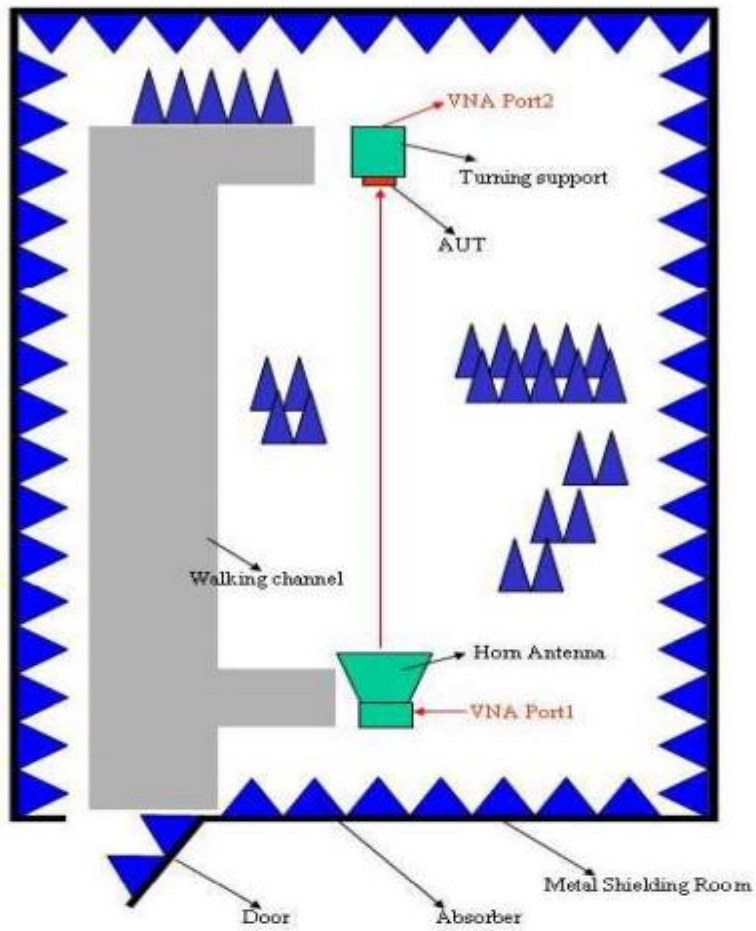
Antenna Gain

Frequency	Effic	Percen	Gain
2400	-5.95	25.4%	-0.01
2410	-5.59	27.6%	0.57
2420	-5.6	27.53%	0.75
2430	-5.25	29.85%	1.29
2440	-5.53	27.97%	1.78
2450	-5.25	29.88%	2.25
2460	-5.26	29.77%	2.54
2470	-5.13	30.69%	2.69
2480	-5.1	30.88%	2.51
2490	-5.12	30.75%	2.48
2500	-5.3	29.49%	2.18

Return Loss



The Environment of Antenna Radiation Pattern



3D radiation pattern diagram

