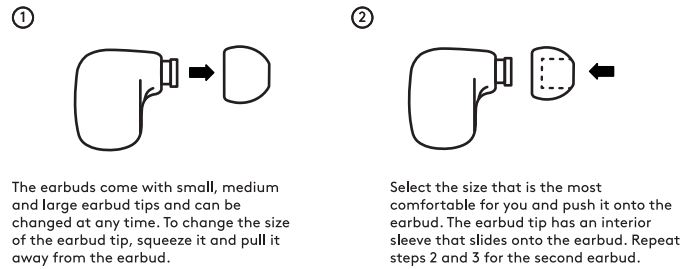


front
12 inch

earbud tips



The earbuds come with small, medium and large earbud tips and can be changed at any time. To change the size of the earbud tip, squeeze it and pull it away from the earbud.

Select the size that is the most comfortable for you and push it onto the earbud. The earbud tip has an interior sleeve that slides onto the earbud. Repeat steps 2 and 3 for the second earbud.

charging earbuds

- Place both earbuds back into the case
- Charging is complete when lights turn off
- Full charge requires approximately 2 hours

charging case

- Plug USB-C end of charger into the back of the case
- Plug USB end into a power supply of at least DC 5V1A **warning:** please use UL compliant power supply
- Full charge requires approximately 2 hours and will provide 20 hours of earbud use
- Charging is complete when all 4 LEDs are solid white

IPX4 water resistance

- The earbuds are resistant to sweat which means they're perfect for workouts **note:** the charging case does not have the same rating and should not be used in the same conditions

single earbud use

- After pairing to your device remove either earbud from the case to enter single earbud use

troubleshooting

- If the earbuds aren't working correctly place them into the case with the lid open and reset them
- If the earbuds won't turn on, recharge the battery and try again
- If the earbuds won't charge, make sure the power supply works, is 5V>1A, not damaged and that the case is charged
- If the earbuds still won't charge, make sure the charge pins are clear of debris as this may cause a connection issue; if they are use a soft dry cloth to clean them
- If the earbuds make no sound or do not show as an available device, make sure they are not paired, if so unpair the device and repair to the desired device

need some help?

Can't get it to pair? Have a question or comment?



call us at: 1-833-TGT-Tech or: 1-833-848-8324

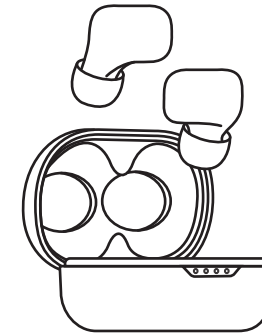
safety

- Do not use near any water source
 - Do not modify or repair this device
 - Do not use chemical detergents to clean your device, use a soft dry cloth
- WARNING:** The battery (battery or batteries or battery pack) shall not be exposed to excessive heat such as sunshine, fire or the like

heyday

FCC ID: 3A025-TWS10 Model: TWS10 Input: 5V=1A Earbud Battery Capacity: 3.7V/40mAh/0.148Wh Case Battery Capacity: 3.7V/300mAh/1.11Wh Made in China
This device complies with Part 15 of the FCC rules. Operation is subject to the following two conditions: 1) this device may not cause harmful interference, and 2) this device must accept any interference received, including interference that may cause undesired operation. **Warning:** Changes or modifications to this unit not expressly approved by the party responsible for compliance could void the user's authority to operate the equipment.
NOTE: This equipment has been tested and found to comply with the limits for a Class B digital device, pursuant to Part 15 of the FCC Rules. These limits are designed to provide reasonable protection against harmful interference in a residential installation. This equipment generates, uses and can radiate radio frequency energy and, if not installed and used in accordance with the instructions, may cause harmful interference to radio communications. However, there is no guarantee that interference will not occur in a particular installation. If this equipment does cause harmful interference to radio or television reception, which can be determined by turning the equipment off and on, the user is encouraged to try to correct the interference by one or more of the following measures:
• Reorient or relocate the receiving antenna.
• Increase the separation between the equipment and receiver.
• Connect the equipment into an outlet on a circuit different from that to which the receiver is connected.
• Consult the dealer or an experienced radio/TV technician for help.
Target Corp. Mpls, MN, 55403 Phone: 1-612-304-6073
For qualified repair specialists requesting repair information and parts please contact the original manufacturer at customersupport@gemfindyours.com

welcome!



hey! welcome to your Heyday™ true wireless earbuds. let's get you set up.

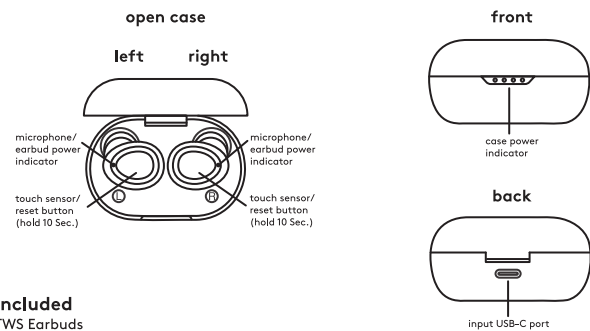
3.6 inch

page 5

page 6

cover

earbuds



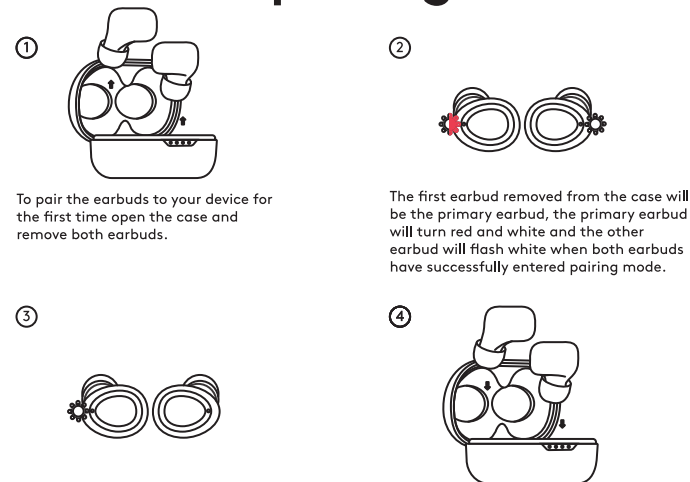
included

- TWS Earbuds
- TWS Earbud Case
- USB-C Charging Cable
- Small, Medium, and Large Earbud Tips

indicators

- Earbud Rapid Flashing Red/White - Pairing mode
- Earbud Solid White and then Fade - Paired
- Earbud Breathing Red - Low power
- Earbud Solid Red - Charging
- Earbud No Light - Charging complete
- Case One Light - 25% charged
- Case Two Lights - 50% charged
- Case Three Lights - 75% charged
- Case Four Lights - 100% charged
- Ascending Tones - Power on
- Descending Tones - Power off
- Three Rapid Tones - Ready to pair
- Single Chime - Paired
- Two Rapid Dings - Low battery

pairing



To pair the earbuds to your device for the first time open the case and remove both earbuds.

The first earbud removed from the case will be the primary earbud, the primary earbud will turn red and white and the other earbud will flash white when both earbuds have successfully entered pairing mode.

Use the Bluetooth settings on your device to pair with HEYDAY EARBUD 10. When the earbuds have successfully paired, the primary earbud will turn white for 5 seconds and then fade.

To reset to factory settings place the earbuds in the case and hold the touch sensor on both earbuds for 10 seconds; the earbuds will turn off and flash red and white 3 times. After resetting start the pairing process at step 1.

page 2

page 3

touch controls

quick tip: the touch sensor is located in the center of the earbud, be sure to touch here so inputs register



left earbud

or

right earbud

- ▶▶ - play/pause
- ◻ - answer/end call

- 1 tap

- ▶▶ - play/pause
- ◻ - answer/end call

- ◀◀ - prev. song*
- ◉ - reject call

- hold 2 sec.

- ▶▶ - next song*
- ◉ - reject call

- ◉◉ - voice assist

- 2 taps

- ◉◉ - voice assist

* - indicates that the left and right earbud have a different function

page 4