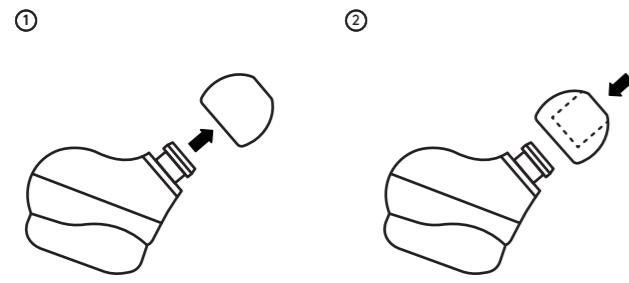


6.42 inch

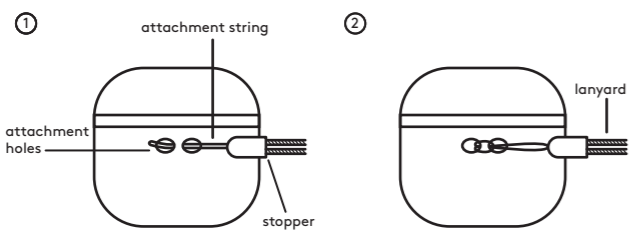
## earbud tips



The earbuds come with small, medium and large earbud tips and can be changed at any time. To change the size of the earbud tip, squeeze it and pull it away from the earbud.

Select the size that is the most comfortable for you and push it onto the earbud. The earbud tip has an interior sleeve that slides onto the earbud. Repeat steps 1 and 2 for the second earbud.

## attach a lanyard



There are attachment holes on the side of the earbud case that can be used to attach a lanyard. Thread the attachment string through one of the holes to the other hole and then pull through until you've reached the stopper.

Thread the lanyard through the opening of the attachment string and then pull through to tighten and create a knot.

page 5

front

12 inch

- ANC (Active Noise-Canceling)/AMB (Ambient)**
- Press the left earbud button twice after turning the earbuds on to enter ANC mode (Active Noise-Cancellation); this is indicated with two ascending tones
  - The peak that ANC mode reduces outside noise is at least 23dB so you can listen without distraction
  - Press the left earbud button two more times while in ANC mode to enter AMB mode (Ambient); this is indicated by two high tones
  - AMB lets in high frequency sounds so you can still hear announcements
  - Pressing the left earbud two more times while in AMB mode will turn OFF AMB mode and is indicated with two descending tones
- charging earbuds**
- Place both earbuds back into the case
  - Charging is complete when lights turn off
  - Full charge of the earbuds requires approximately 1.5 hours and will provide 6 hours of use
- charging case**
- Plug USB-C end of charger into the back of the case
  - Plug USB end into a power supply of at least DC 5V/1A **warning:** please use UL compliant power supply
  - Full charge of the case requires approximately 2 hours and will provide 20 hours of earbud use
  - Charging complete when case charging indicator are solid white
- IPX4 water resistance**
- The earbuds are resistant to sweat which means they're perfect for workouts **note:** the charging case does not have the same rating and should not be used in the same conditions
- single earbud use**
- After pairing to your device remove either earbud from the case to enter single earbud use **Note:** ANC/AMB modes will not work when using a single earbud

- troubleshooting**
- If the earbuds are not working place them into the case with the lid open and reset them
  - If the earbuds won't turn on, recharge the battery and try again
  - If the earbuds won't charge, make sure the power supply works, is 5V/1A, not damaged and that the case is charged
  - If the earbuds still won't charge, make sure the charge pins are clear of debris as this may cause a connection issue; if they are use a soft dry cloth to clean them
  - If the earbuds make no sound or do not show as an available device, make sure they are not paired, if so unpair the device and repair to the desired device

**need some help?**  
Can't get it to pair? Have a question or comment?  
call us at: 877-698-4885 or: 877-MyTgTech online at: TargetTechSupport.com

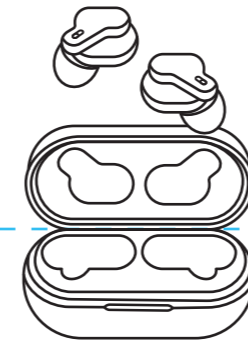
**safety**

- Do not use near any water source
- Do not modify or repair this device
- Do not use chemical detergents to clean your device, use a soft dry cloth

**WARNING:** The battery (battery or batteries or battery pack) shall not be exposed to excessive heat such as sunshine, fire or the like

**heyday**  
FCC ID: 2AC0198 Heyday Model: HEYDAY Case Battery Capacity: 3.7V/300mAh/1100mAh  
This device complies with Part 15 of the FCC rules. Operation is subject to the following two conditions: (1) this device may not cause harmful interference, and (2) this device must accept any interference received, including interference that may cause undesired operation.  
**Warning:** Changes or modifications to this unit not approved by the party responsible for compliance could void the user's authority to operate the equipment.  
**NOTE:** This equipment has been tested and found to comply with the limits for Class B digital device, pursuant to Part 15 of the FCC Rules. These limits are designed to provide reasonable protection against harmful interference in a residential setting. This equipment generates, uses and can radiate radio frequency energy and, if not installed and used in accordance with the instructions, may cause harmful interference to radio communications.  
**However, there is no guarantee that interference will not occur in a particular installation. If this equipment does cause harmful interference to radio or television reception, which can be determined by turning the equipment off and on, the user is encouraged to try to correct the interference by one or more of the following measures:**  
• Reorient or relocate the receiving antenna.  
• Increase the separation between the equipment and receiver.  
• Connect the equipment to an electrical outlet on a circuit different from that to which the receiver is connected.  
• Consult the dealer or an experienced radio/TV technician for help.  
Heyday Case, Heyday, HEYDAY, HEYDAY are trademarks of Heyday Inc. © 2024 Heyday Inc.  
For qualified repair specialists requesting repair information and parts please contact the original manufacturer at customersupport@heyday.com

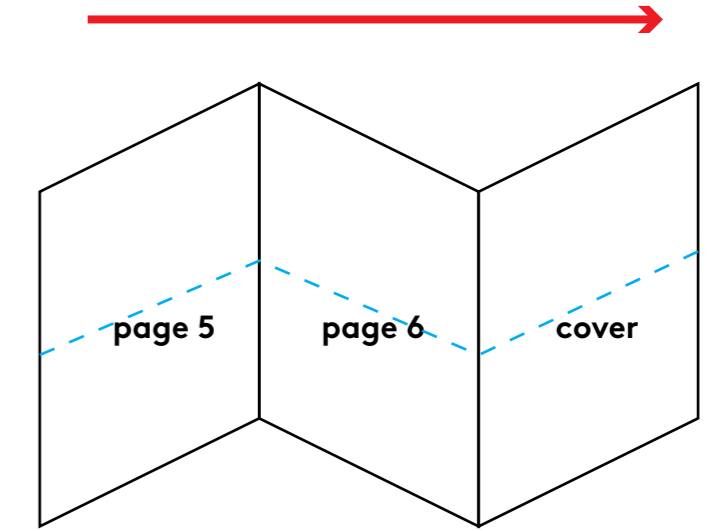
## welcome!



hey! welcome to your Heyday™ true wireless earbuds. let's get you set up.

DO NOT PRINT

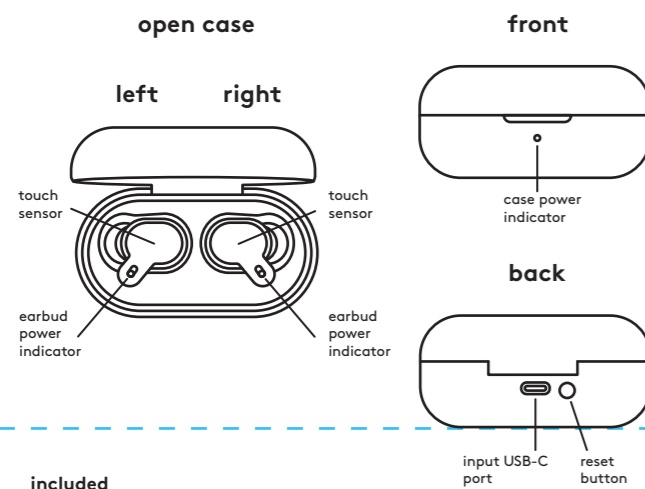
how to fold



page 6

cover

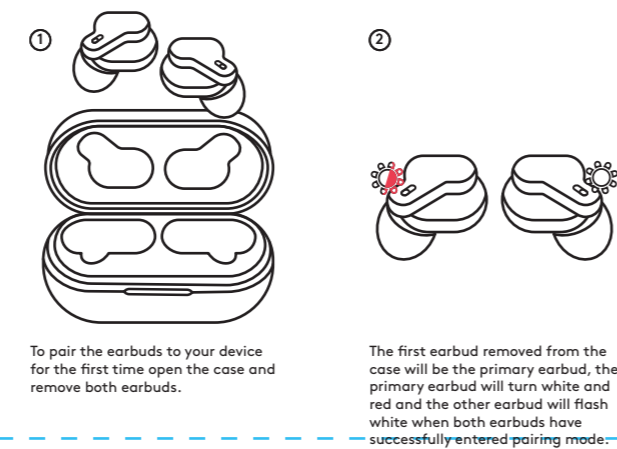
## earbuds



- included**
- TWS Active Noise Canceling Earbuds
  - TWS Earbud Case
  - USB-C Charging Cable
  - Small, Medium, and Large Earbud Tips
- not included**
- Lanyard
- indicators**
- Earbud Rapid Flashing Red and White - Pairing mode
  - Earbud Flashes White and Fades - Paired
  - Earbud Breathing Red - Low power
  - Earbud Solid Red - Charging
  - Earbud No Light - Charging complete
  - Case Charging Indicator Flashing White - Charging
  - Case Charging Indicator Solid White - Charging complete
- ANC/AMB indicators**
- Two Ascending Tones - ANC ON
  - Two High Tones - Ambient ON
  - Two Descending Tones - Ambient OFF

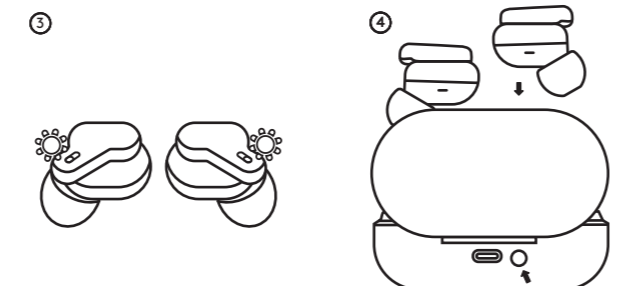
page 2

## pairing



To pair the earbuds to your device for the first time open the case and remove both earbuds.

The first earbud removed from the case will be the primary earbud, the primary earbud will turn white and red and the other earbud will flash white when both earbuds have successfully entered pairing mode.



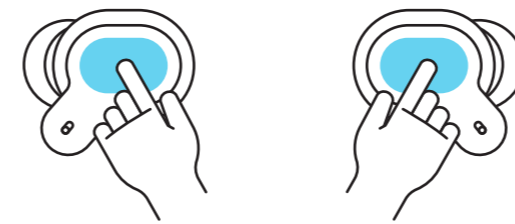
Use the Bluetooth settings on your device to pair with HEYDAY EARBUD 09. When the earbuds have successfully paired you will hear a chime and the light will turn white for five seconds and then fade.

To reenter pairing put both earbuds back into the charging case. Leave the charging case lid open and hold the reset button on the back for 3 seconds; the earbuds will rapid flash white and red twice and the case power indicators will rapid flash white twice as well. To reset the factory settings hold for 6 seconds; earbuds flash white and red and the power indicators in case will rapid flash white for 3 times. After reentering pairing or resetting start the pairing process at step 1.

page 3

## touch controls

quick tip: the touch sensor is located in the center of the earbud, be sure to touch here so inputs register



- |                      |                |                      |
|----------------------|----------------|----------------------|
| <b>left earbud</b>   | <b>or</b>      | <b>right earbud</b>  |
| ▶▶▶ - play/pause     | • 1 tap        | ▶▶▶ - play/pause     |
| ◻ - answer/end call  | • hold 2 secs. | ◻ - answer/end call  |
| ◀ - prev. song*      | • 2 taps       | ▶▶▶ - next song*     |
| ◻ - reject call      |                | ◻ - reject call      |
| ••• - ANC mode*      |                | ••• - voice assist** |
| ••• - AMB mode*      |                |                      |
| ••• - ANC off*       |                |                      |
| ••• - voice assist** |                |                      |

\* - indicates that the left and right earbud have a different function  
\*\* - indicates that this only works when using a single earbud

page 4