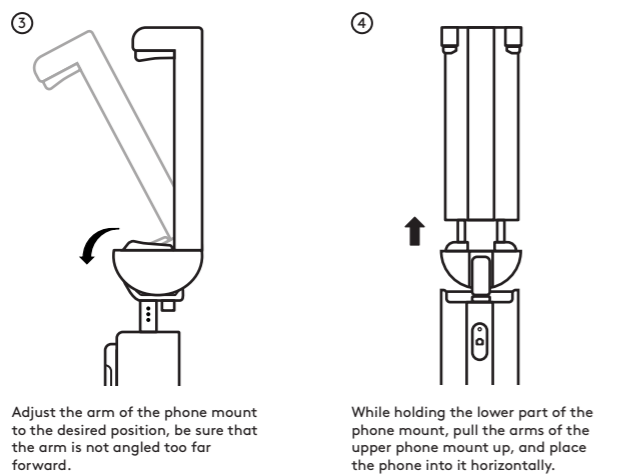
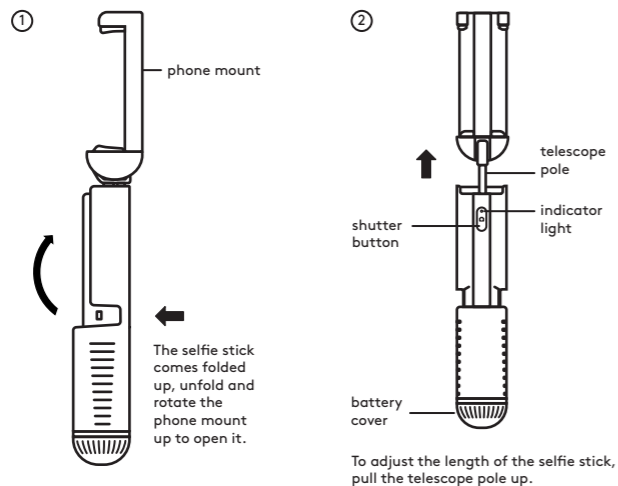


■ Pantone Black C

□ Cut Line

4 in

selfie stick



front

included

- Selfie stick

light indicators

- Flashing white rapidly - ready to pair
- Solid white - paired
- Flashing white slowly - low battery

shutter button

- Be sure to remove the protective film on the battery compartment before using, then press and hold the shutter button to power on
- The indicator light will flash white rapidly when the selfie stick is ready to pair
- Use the bluetooth settings on your phone to pair with "HEYDAY REMOTE 02"
- The selfie stick is connected when the indicator light turns solid white
- Open the camera on your phone and use the shutter button on the selfie stick to take pictures
- The selfie stick will automatically shut off after 10 minutes of inactivity; hold the shutter button to turn the selfie remote off
- If the indicator light is flashing white slowly the battery is low, replace the CR1632 battery

installation tips

- To avoid damaging your phone, make sure that your phone is placed horizontally into the mount; the phone mount is not meant to hold phones vertically
- Always be aware of your surroundings; do not use the selfie stick in potentially dangerous situations such as driving, walking, or situations that require your full attention

need some help?

Selfie stick won't pair? Have a question or comment?



call us at: 877-698-4883 or: 877-MyTgtTech



online at: TargetTechSupport.com

⚠ WARNING

- Chemical Burn Hazard. Keep batteries away from children. Do not ingest the battery.
- This product contains a coin/button cell battery. If the coin/button cell battery is swallowed, it can cause severe internal burns in just 2 hours and can lead to death.
- Keep new and used batteries away from children.
- If the battery compartment does not close securely, stop using the product and keep it away from children.
- If you think batteries might have been swallowed or placed inside any part of the body, seek immediate medical attention.

Battery Warning:

- Insert the battery in the proper direction as indicated by positive (+) and negative (-) markings in the battery holder.
- Remove a depleted battery promptly and recycle or dispose of it in accordance with Local and National Disposal Regulations.
- If a battery leaks, remove it and recycle or dispose of it in accordance with battery manufacturer's instructions and Local and National Disposal Regulations. If fluid from the battery comes into contact with skin or clothes, flush with water immediately.
- Remove the battery if your device is to be stored for an extended period of time without being used.

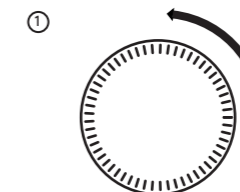
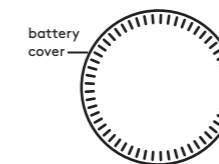
heyday

FCC ID: 2AC25-551 Selfie Remote Model: SS1 Made in China
 This device complies with Part 15 of the FCC rules. Operation is subject to the following two conditions: 1) this device may not cause harmful interference, and 2) this device must accept any interference received, including interference that may cause undesired operation.
 Warning: Changes or modifications to this unit not expressly approved by the party responsible for compliance could void the user's authority to operate the equipment.
 NOTE: This equipment has been tested and found to comply with the limits for a Class B digital device, pursuant to Part 15 of the FCC Rules. These limits are designed to provide reasonable protection against harmful interference in a residential installation. This equipment generates, uses and can radiate radio frequency energy and, if not installed and used in accordance with the instructions, may cause harmful interference to radio communications. However, there is no guarantee that interference will not occur in a particular installation. If this equipment does cause harmful interference to radio or television reception, which can be determined by turning the equipment off and on, the user is encouraged to try to correct the interference by one or more of the following measures:
 • Reorient or relocate the receiving antenna.
 • Increase the separation between the equipment and receiver.
 • Connect the equipment into an outlet on a circuit different from that to which the receiver is connected.
 • Consult the dealer or an experienced radio/TV technician for help.
 This device has been evaluated to meet general RF exposure requirement. The device can be used in portable exposure condition without restriction.
 Target Corp., Mpls, MN, 55403 Phone: 1-812-304-6073
 For qualified repair specialists requesting repair information and parts please contact the original manufacturer at customersupport@gemfindyour.com

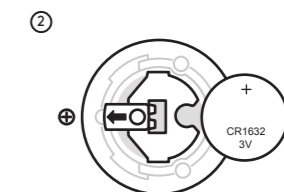
back

battery installation

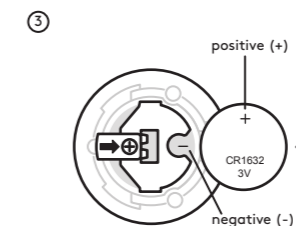
bottom



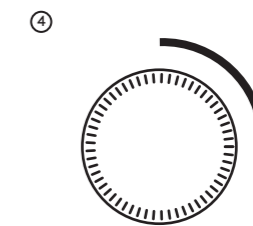
If the shutter button is not working or the indicator light is flashing white slowly, you will need to replace the battery. First, rotate the battery cover counterclockwise to the unlock position.



Next, use a screwdriver to remove the screw and remove the old battery.



Insert the new battery in the proper direction as indicated by positive (+) and negative (-) symbols. tighten the screw.



Replace the battery cover and rotate the batter cover clockwise to the lock position.

front