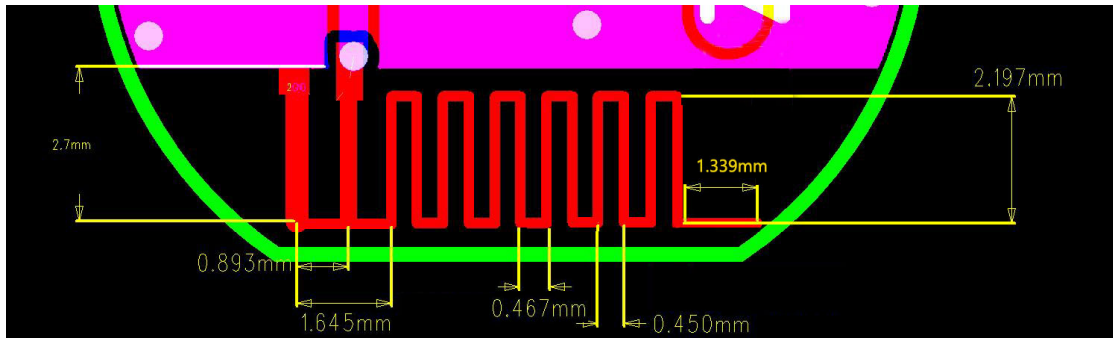


Antenna specification

1. Dimension

Antenna dimension show as the picture blow, 0.8mm of FR4 epoxy with 2 layers of 0.035mm copper.

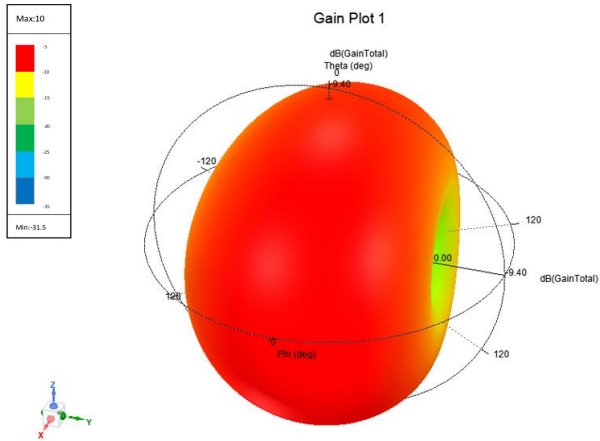


2. Gain and efficiency

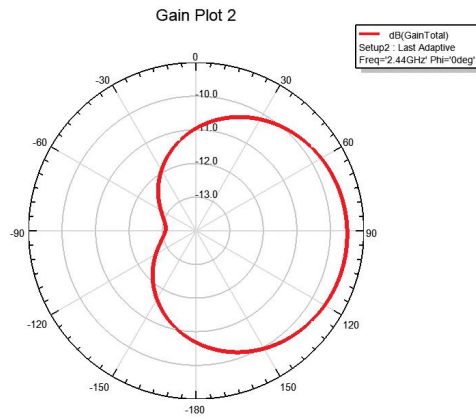
① Gain total

Freq [GHz]	dBi(PeakGain) []
2.3	-9.798180041
2.32	-9.734420103
2.34	-9.673493886
2.36	-9.614428416
2.38	-9.557725155
2.4	-9.503877726
2.42	-9.452798827
2.44	-9.404655732
2.46	-9.359659396
2.48	-9.317805078
2.5	-9.27870909

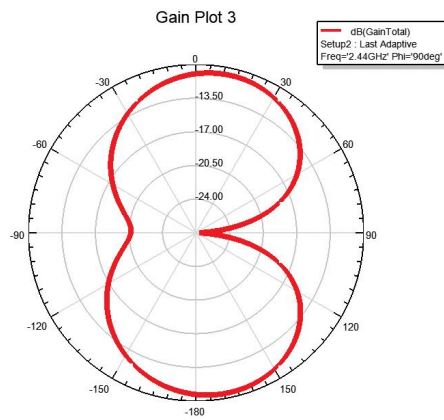
② Radiation patton
3D Radiation patton



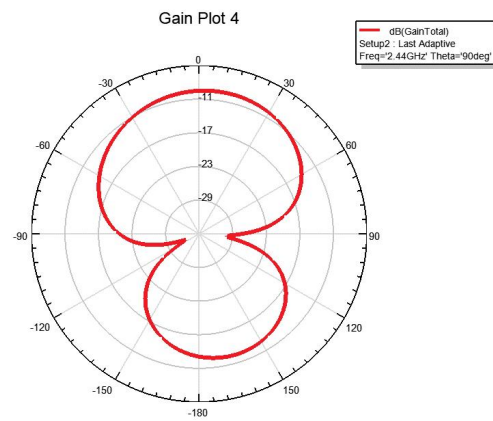
1D Radiation patton
Freq = 2.44GHz, Phi = 0deg



Freq = 2.44GHz, Phi = 90deg



Freq = 2.44GHz, Theta = 90deg



3. Antenna model: PCB ANT

4. Manufacturer: Hongji Intelligent

5. Test site: Room 401, Building 15, No. 498 Guo Shoujing Road, Pudong New Area, Shanghai

Testers: 赵晨阳