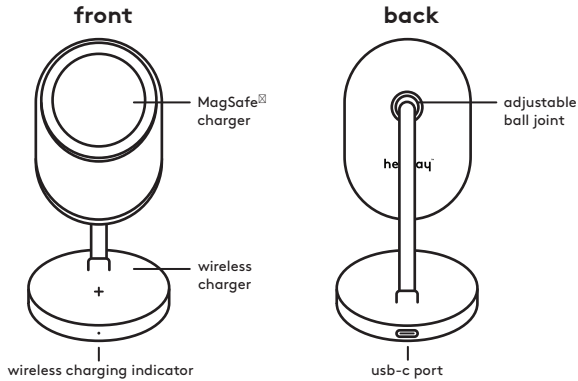


4 in

## MagSafe + Wireless charger Stand



### quick tips

- The device should stick firmly when MagSafe<sup>®</sup> charging
- Thick cases as well as some materials can interfere with MagSafe<sup>®</sup>/wireless charging
- This is a high speed magnetic charging stand, make the most of the charger by using the Power Delivery wall plug that was packaged with it; using a different power source may charge your device at a slower speed

### included

- Wireless charger with MagSafe<sup>®</sup> charger
- USB-C to USB-C charging cable
- Power Delivery wall plug

### indicators - wireless charger only

- Solid Red - Charging your device
- Solid White - Fully charged
- Flashing Red - Foreign object detection, pieces of metal or other materials may cause overheating and damage your charger or device; remove them immediately

### charging - set up

- Place the charging stand on a sturdy flat surface
- Connect the Power Delivery wall plug to the wall outlet using the USB-C cable
- If you need to use a different power source make sure it is a USB power supply of DC 9V 3.0A minimum **warning:** please use UL compliant power supply (note: this product does not support the Quick Charge protocol; it is recommended that users choose a PD charger with no less than 20W for power supply)
- Use the adjustable ball joint to easily adjust the MagSafe<sup>®</sup> charger to your preferred viewing angle

### charging - MagSafe<sup>®</sup>

- Place your MagSafe<sup>®</sup> compatible device onto the MagSafe<sup>®</sup> charger; the device will stick to the charging stand and the screen will indicate that it is charging (note: MagSafe<sup>®</sup> compatible device can be placed vertically or horizontally)
- Remove credit cards or any card with a magnetic strip to prevent damage to the cards before charging
- Charge time will vary by device

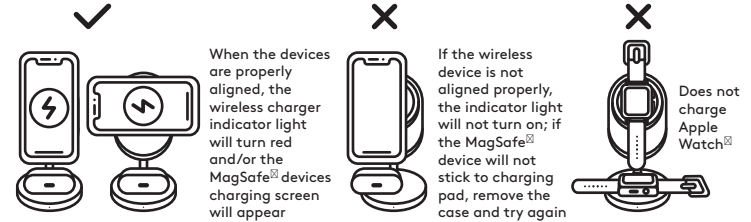
### charging - earbud case

- Place your earbud case onto the wireless charger, face up, and align the center of the case with the cross on the wireless charger or the device may not charge
- Ensure that the earbud case lid is closed
- Wireless charging indicator light will turn solid red to indicate it is charging
- Charge time will vary by device

front

### troubleshooting

- If you're having issues charging use the tips below to help:



When the devices are properly aligned, the wireless charger indicator light will turn red and/or the MagSafe<sup>®</sup> devices charging screen will appear

If the wireless device is not aligned properly, the indicator light will not turn on; if the MagSafe<sup>®</sup> device will not stick to charging pad, remove the device from charging pad, and try again

Does not charge Apple Watch<sup>®</sup>

- Double check that the USB-C cable and Power Delivery wall plug are plugged in
- Certain cases may interfere with MagSafe<sup>®</sup>/wireless charging; remove the cases for best results
- Double check the placement of the devices on the chargers; for best results, the center of the devices should be on the center of the chargers
- MagSafe<sup>®</sup> charging is compatible with iPhone<sup>®</sup> 12 and newer as well as other Qi-enabled devices; please consult your device's user manual if you are unsure if your device is compatible
- Wireless earbud case charging is compatible with AirPods<sup>®</sup> with Wireless Charging Case, AirPods Pro<sup>®</sup> and other Qi-enabled devices; please consult your devices user manual if you are unsure if your device is compatible

### need some help?

Can't get it to charge? Just have a question?



call us at: 877-698-4883 or 877-MyTgtTech



e-mail us at: TargetTechSupport.com

6.8 in

### safety

- Remove credit cards and other cards with magnetic strips to prevent damage to the cards
- Keep the charger away from heat and direct sunlight
- Do not modify or repair this device
- Do not use in high temperatures or extreme weather
- Do not use chemical detergents to clean your device, use a soft dry cloth
- Immediately unplug it from its power source if it gets wet
- Remove the protective film on the Power Delivery wall plug before using

### heyday

FCC ID: 2A023-QIC44 Model: QIC44 Input: DCPW/3.0A phone charging Output 1: MagSafe Charger 15W Output 2: AirPods Charger 5W Made in Vietnam

This device complies with Part 15 of the FCC rules. Operation is subject to the following two conditions: 1) this device may not cause harmful interference, and 2) this device must accept any interference received, including interference that may cause undesired operation. Warning: Changes or modifications to this unit not expressly approved by the party responsible for compliance could void the user's authority to operate the equipment.

NOTE: This equipment has been tested and found to comply with the limits for a Class B digital device, pursuant to Part 15 of the FCC Rules. These limits are designed to provide reasonable protection against harmful interference in a residential installation. This equipment generates, uses and can radiate radio frequency energy and, if not installed and used in accordance with the instructions, may cause harmful interference to radio communications.

However, there is no guarantee that interference will not occur in a particular installation. If this equipment does cause harmful interference to radio or television reception, which can be determined by turning the equipment off and on, the user is encouraged to try to correct the interference by one or more of the following measures:

- Reorient or relocate the receiving antenna.
- Increase the separation between the equipment and receiver.
- Connect the equipment into an outlet on a circuit different from that to which the receiver is connected.
- Consult the dealer or an experienced radio/TV technician for help.

This equipment complies with FCC radiation exposure limits set forth for an uncontrolled environment. This equipment should be installed and operated with minimum distance 20cm between the radiator and your body. This transmitter must not be co-located or operating in conjunction with any other antenna or transmitter.  
Target Corp. Mpls. MN, 55403 Phone: 612-304-6073

back