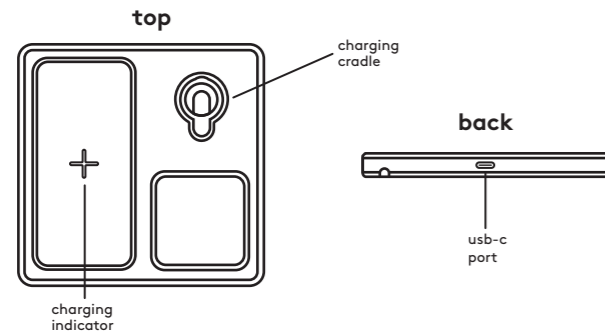


■ Pantone Black C

□ Cut Line

## wireless charging station



### quick tips

- Alignment matters - centering the device on the charging surface ensures the fastest and most efficient charge
- Thick phone cases as well as some materials can interfere with the ability to charge
- This is a high speed wireless charger. Make the most of the charger by using the USB-C cable and Quick Charge 3.0 wall plug that were packaged with it. Using a different power source may charge your device at a slower speed.

### included

- Wireless charger
- USB-A to USB-C charging cable
- Quick Charge 3.0 wall plug

### indicators

- Solid Red - Charging your device
- Solid White - Fully charged
- \* Flashing Red - Foreign object detection, pieces of metal or other materials may cause overheating and damage your charger or phone. Remove them immediately

### charging

- Place the charger on a sturdy flat surface
- Connect the quick charger 3.0 wall plug to the wall outlet using the USB-C cable
- If you need to use a different power source make sure it is a USB power supply of DC 9V 2A minimum **warning:** please use UL compliant power supply
- Place your Qi-enabled device onto the wireless charger and align the device with the center of the charging surface or the device will not charge
- Remove credit cards or any card with a magnetic strip to prevent damage to the cards before charging
- Charge time will vary by device

front

4 in

### setting up the cradle

- See the additional page for help setting up the charging cradle

### troubleshooting

- Double check that the USB-C cable and quick charger 3.0 wall plug are plugged in
- Certain phone cases may interfere with wireless charging. Remove the phone case for best results.
- Double check the placement of the device on the wireless charger. For best results, the center of the device should be on the center of the wireless charger
- Wireless charging is compatible with iPhone 8 and newer as well as other Qi-enabled devices. Please consult your devices user manual if you are unsure if your device is compatible.

### need some help?

Can't get it to charge? Just have a question?



call us at: 877-698-4883 or: 877-MyTgtTech e-mail us at: TargetTechSupport.com



### safety

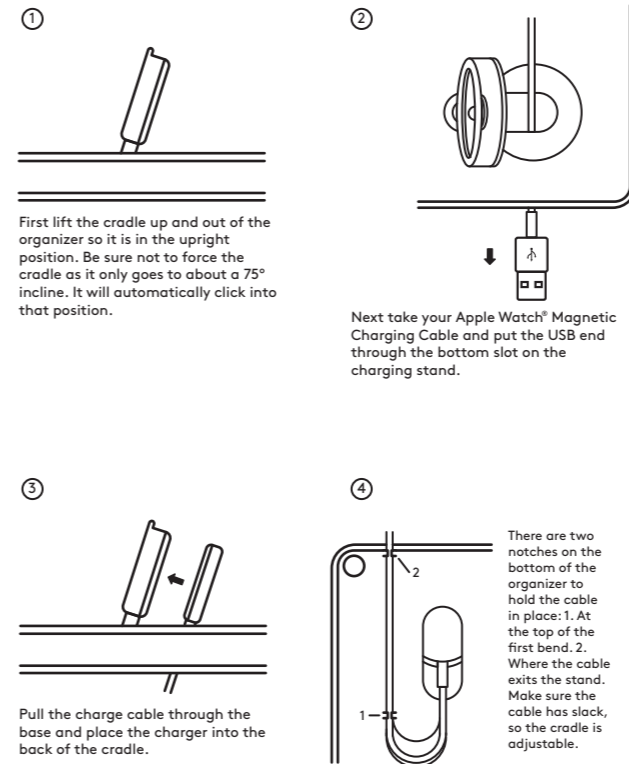
- Remove credit cards and other cards with magnetic strips to prevent damage to the cards
- Keep the charger away from heat and direct sunlight
- Do not modify or repair this device
- Do not use in high temperatures or extreme weather
- Do not use chemical detergents to clean your device, use a soft dry cloth
- Immediately unplug it from its power source if it gets wet
- Remove the protective film on the Quick Charge 3.0 wall plug before using

### heyday™

FCC ID: 2A023-GIC38 Model: GIC38 Input: DC 5V/2A 9V/1.7A 12V/1.25A Output: 10W Max Made in China  
This device complies with Part 15 of the FCC rules. Operation is subject to the following two conditions: 1) this device may not cause harmful interference, and 2) this device must accept any interference received, including interference that may cause undesired operation.  
Warning: Changes or modifications to this unit not expressly approved by the party responsible for compliance could void the user's authority to operate the equipment.  
NOTE: This equipment has been tested and found to comply with the limits for a Class B digital device, pursuant to Part 15 of the FCC Rules. These limits are designed to provide reasonable protection against harmful interference in a residential installation. This equipment generates, uses and can radiate radio frequency energy and, if not installed and used in accordance with the instructions, may cause harmful interference to radio communications.  
However, there is no guarantee that interference will not occur in a particular installation. If this equipment does cause harmful interference to radio or television reception, which can be determined by turning the equipment off and on, the user is encouraged to try to correct the interference by one or more of the following measures:  
• Reorient or relocate the receiving antenna.  
• Increase the separation between the equipment and receiver.  
• Connect the equipment into an outlet on a circuit different from that to which the receiver is connected.  
• Consult the dealer or an experienced radio/TV technician for help.  
This equipment complies with FCC radiation exposure limits set forth for an uncontrolled environment. This equipment should be installed and operated with minimum distance 20cm between the radiator and your body. This transmitter must not be co-located or operating in conjunction with any other antenna or transmitter.  
Target Corp. Mpls. MN. 55403 Phone: 612-304-6073

back

## charging cradle



front

4 in

### installation tips

- If you're having issues getting the cradle to the upright position, try pushing from the bottom side of the base
- Take care when removing the charger from the cradle, as too much force may damage the stand

### need some help?

Can't get the cradle upright? Have a question or comment?



call us at: 877-698-4883 or: 877-MyTgtTech online at: TargetTechSupport.com



5.6 in

back

Target Corp. Mpls. MN. 55403 Phone: 1-612-304-6073