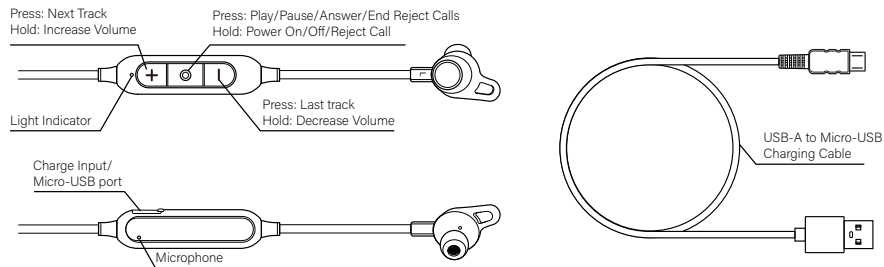


BLUETOOTH WIRELESS EARBUDS INSTRUCTIONS Cut Line

Material: 105gsm double side art paper(C2S).
Color: Black + pantone cool gray 8c
Surface coating : glossy varnish.

6.25 INCHES

ATRIX BLUETOOTH WIRELESS EARBUDS USER GUIDE



Need Help?

Have any questions or comments? Need help getting set up? Contact us at <https://care.gamestop.com>

What's Included

- Bluetooth Wireless Earbuds
- USB-A to Micro-USB Charging Cable (cable does not transfer data)
- Small, Medium, and Large Earbud Tips

Indicators

- Rapid Flashing Red and Blue - Pairing mode
- Breathing Blue - Paired
- Flashing Red - Low Power
- Solid Red - Charging
- Solid Blue - Charging complete

Pairing

Pairing:

- Hold the center button until the indicator is rapidly flashing red and blue.
- Use the Bluetooth settings on your phone to pair with Atrix Wireless Earbuds.
- The earbuds are connected when the indicator light is breathing blue.
- Once you are paired with a device it will automatically re-connect the next time you turn it on if it's in range with the device and Bluetooth mode is switched on.

Re-enter Pairing:

- To re-enter pairing mode disconnect from your device using the Bluetooth menu on your device.

Phone Calls

- Press the center button to answer/end incoming calls.
- Double press the center button to open the voice assist.
- Triple press the center button to dial last incoming call.

Charging

- Plug the micro end of charging cable into the earbuds and plug the USB end into a USB power supply of DC 5V 500mA minimum. Warning: please use UL compliant power supply.
- Charging is complete when the indicator light turns solid blue.
- Full charge requires approximately 1-2 hours.

Troubleshooting

- If the earbuds are not working correctly, turn them on/off to reset.
- If the earbuds won't turn on, recharge the battery and try again.
- If the earbuds won't charge, make sure the power supply works, is 5V>500mA, and not damaged.
- If the earbuds make no sound or do not show as an available device, make sure they are not paired, if so unpair the device and repair the desired device.

FCC ID: 2A023-GSEAB96 Model: GSEAB96
Input: 5V ≈ 500mA

Important Safety Instructions

WARNING

When using this product, basic precautions should always be followed, including the following:

- Read these instructions carefully.
- All cautions and warnings should be followed.
- Protect equipment from humidity.
- Do not use chemical detergents to clean your device, use a soft dry cloth.
- To avoid damage from electrical peaks unplug the device when it is not in use.

If one of the following situations arise, equipment has to be checked by qualified service personnel:

- Liquid has penetrated into the equipment.
- Equipment has been exposed to humidity.
- Equipment has been dropped and/or is damaged.
- Equipment has obvious sign of breakage.
- Equipment does not work well or you cannot get it working according to user's manual.

SAVE THESE INSTRUCTIONS

This device complies with Part 15 of the FCC rules. Operation is subject to the following two conditions: 1) this device may not cause harmful interference, and 2) this device must accept any interference received, including interference that may cause undesired operation.

WARNING

Changes or modifications to this unit not expressly approved by the party responsible for compliance could void the user's authority to operate the equipment.

NOTE: This equipment has been tested and found to comply with the limits for a Class B digital device, pursuant to Part 15 of the FCC Rules. These limits are designed to provide reasonable protection against harmful interference in a residential installation. This equipment generates, uses and can radiate radio frequency energy and, if not installed and used in accordance with the instructions, may cause harmful interference to radio communications.

However, there is no guarantee that interference will not occur in a particular installation. If this equipment does cause harmful interference to radio or television reception, which can be determined by turning the equipment off and on, the user is encouraged to try to correct the interference by one or more of the following measures:

- Reorient or relocate the receiving antenna.
- Increase the separation between the equipment and receiver.
- Connect the equipment into an outlet on a circuit different from that to which the receiver is connected.
- Consult the dealer or an experienced radio/TV technician for help.

Made in China

ATRIX.
Geeknet, Inc. 625 Westport Pkwy, Grapevine, TX 76051
Phone: 855-474-7717

6.5 INCHES