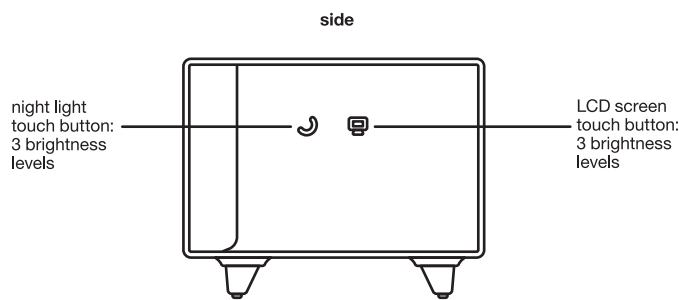
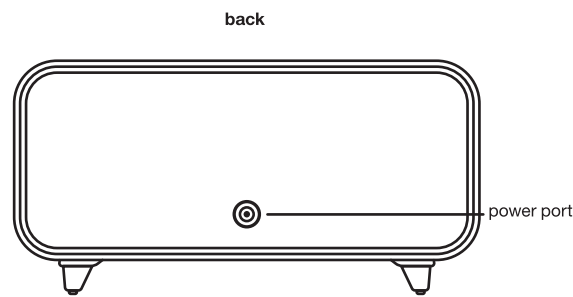
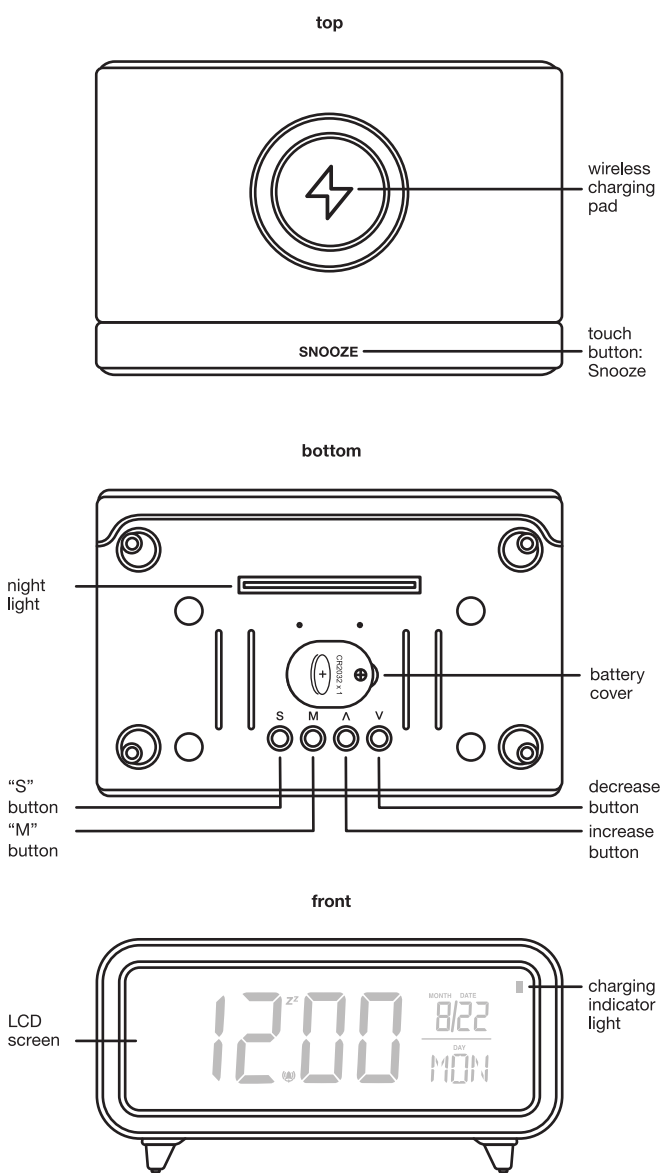


4 in



# alarm clock with wireless charging



### Before you get started:

- Be careful when positioning the alarm clock, avoid edges of surfaces so it does not fall.
- When wireless charging placement matters, be sure to place your wireless compatible device in the center of the charger.
- Thicker cases as well as some materials may interfere with the ability to wirelessly charge.
- Not all phones can wirelessly charge. If you are unsure if your phone has this capability refer to the manufacturer's user manual.
- If you are using a case that doubles as a wallet be sure to remove credit cards, IDs, and anything with a magnetic strip before charging as they may become damaged.

### included

- Alarm clock with wireless charging
- Wall adapter with cable

### indicators

- Solid Red - Charging your device
- Solid Green - Fully charged
- Flashing Red - Foreign object detection, pieces of metal or other materials may cause overheating and damage your alarm clock, phone; remove them immediately.

### set up

- Place the alarm clock onto a flat, sturdy surface.
- Plug the cable of the adapter into the power port on the back of the alarm clock.
- Plug the opposite end of the adapter cable into a grounded wall outlet.
- If you need to use a different power source make sure it is a power supply of DC 12V 1A. Warning: please use UL compliant power supply.
- The LCD screen will turn on automatically, the wireless charging indicator light will flash one time as well.

### charging

- Place your Qi-enabled device onto the wireless charger and align the device with the center of the charging surface or the device will not charge.
- Remove credit cards or any card with a magnetic strip to prevent damage to the cards before charging.
- The charging phone allows for wireless charging up to 5W.
- Charge time will vary by device.

front

### alarm clock

- When using the alarm clock for the first time be sure to remove the protective film from the battery compartment. The battery is a back up and the clock function will work if power is lost; time will not be displayed. The clock won't need to be reset when power is restored. The alarm clock uses a CR2032 battery, if it is not working replace the battery.
- Press the "S" button on the bottom of the alarm clock to enter the time : Press the button repeatedly to cycle adjusting the hour, minute, year, month, and date.
- Press "A" to increase time and press "V" to decrease time.
- Press "M" to enter the alarm and snooze settings. Press "A,V" to set and close the alarm. Then press "S" to enter the hour, minute, and snooze of your alarm.
- You can set snooze times from 5, 10, 15, 20, 25, 30 minutes.
- When the alarm clock goes, press any button on the bottom to stop the alarm clock. If you do not shut the alarm off, it will automatically stop after a minute.
- Press the snooze button on top of the alarm to use the snooze function. When using the snooze function the "Z" on the face of the clock will illuminate.
- When the clock is at its main function press "A" to switch from a 12 hour and 24 hour clock.

### troubleshooting:

- If the charger is not working double check that the power supply is plugged into the alarm clock and a grounded wall outlet.
  - Certain phone cases may interfere with wireless charging. Remove phone case for best results.
  - Double check the placement of the device on the wireless charger. For best results, the center of the device should be on the center of the charger.
  - Wireless charging is compatible with iPhone® 8 and newer phones as well as other Qi-enabled devices. Please consult your devices user manual if you are unsure if your device is compatible.
- Note: Apple Watch® is not compatible with this device.

### Need some help?

Can't get it to charge or set up the alarm clock? Have a question or comment?

Call us at: 877-698-4883 or: 877-mytgtech Online at: targettechsupport.com

### Safety

- do not use near any water source
- do not modify or repair this device
- do not use in high temperatures or extreme weather
- do not use chemical detergents to clean your device, use a soft dry cloth
- do not drop the product and do not expose it to any major shocks
- do not operate the product outside the power limits given in the specifications
- protect the product from moisture and overheating and use it in dry rooms only
- as with all electrical devices, this device should be kept out of the reach of children

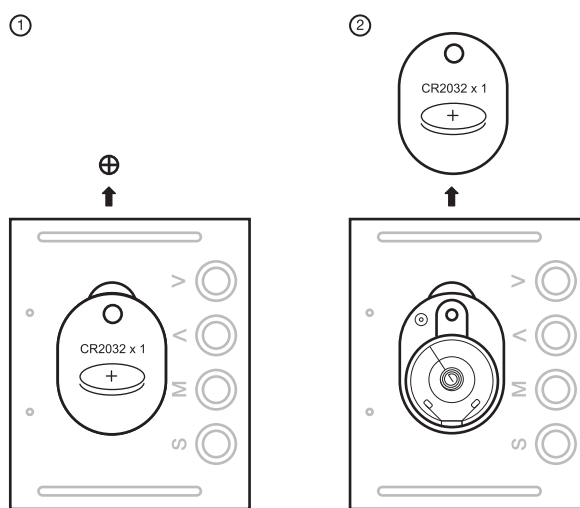
### WARNING

- Chemical Burn Hazard. Keep batteries away from children. Do not ingest the battery.
- The alarm clock contains a coin/button cell battery. If the coin/button cell battery is swallowed, it can cause severe internal burns in just 2 hours and can lead to death.
- Keep new and used batteries away from children.
- If the battery compartment does not close securely, stop using the product and keep it away from children.
- If you think batteries might have been swallowed or placed inside any part of the body, seek immediate medical attention.

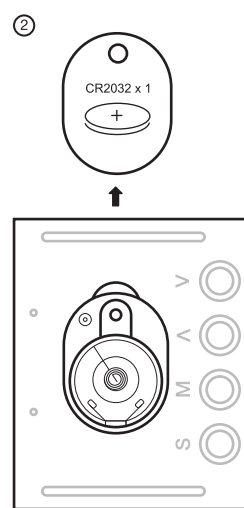
### Battery Warning:

- Insert the battery in the proper direction as indicated by positive (+) and negative (-) markings in the battery holder.
- Remove a depleted battery promptly and recycle or dispose of it in accordance with Local and National Disposal Regulations.
- If a battery leaks, remove it and recycle or dispose of it in accordance with battery manufacturer's instructions and Local and National Disposal Regulations. If fluid from the battery comes into contact with skin or clothes, flush with water immediately.
- Remove the battery if your device is to be stored for an extended period of time without being used.

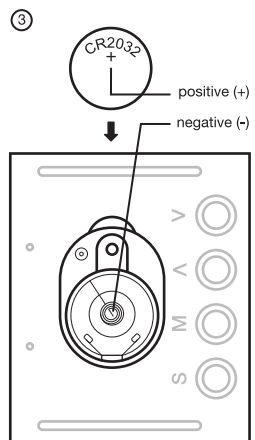
# battery installation



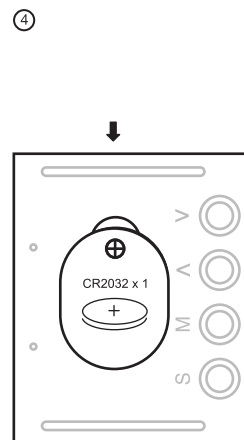
If you unplug the alarm clock from the wall adapter and it is not working, you will need to replace the battery. First, Use a screwdriver to remove the screw from battery cover.



Next, remove the battery cover and the old battery from the alarm clock.



Insert a new battery in the proper direction as indicated by positive (+) and negative (-) symbols.



After the battery is properly inserted, replace the battery cover and slide the cover closed and tighten the screw.

FCC ID: 2A023-CLKCSC Model: CLKCSC Input: 12V 1.5A Max. wireless charger output: 5W Max. wall adapter Input: 100-240V-50/60Hz 0.4A. Output: 12V 1.5A Made in China  
 This device complies with Part 15 of the FCC rules. Operation is subject to the following two conditions: 1) this device may not cause harmful interference, and 2) this device must accept any interference received, including interference that may cause undesired operation.  
 Warning: Changes or modifications to this unit not expressly approved by the party responsible for compliance could void the user's authority to operate the equipment.  
 NOTE: This equipment has been tested and found to comply with the limits for a Class B digital device, pursuant to Part 15 of the FCC Rules. These limits are designed to provide reasonable protection against harmful interference in a residential installation. This equipment generates, uses and can radiate radio frequency energy and, if not installed and used in accordance with the instructions, may cause harmful interference to radio communications.  
 However, there is no guarantee that interference will not occur in a particular installation. If this equipment does cause harmful interference to radio or television reception, which can be determined by turning the equipment off and on, the user is encouraged to try to correct the interference by one or more of the following measures:  
 • Reorient or relocate the receiving antenna.  
 • Increase the separation between the equipment and receiver.  
 • Connect the equipment into an outlet on a circuit different from that to which the receiver is connected.  
 • Consult the dealer or an experienced radio/TV technician for help.  
 This equipment complies with FCC radiation exposure limits set forth for an uncontrolled environment. This equipment should be installed and operated with minimum distance 20cm between the radiator and your body. This transmitter must not be co-located or operating in conjunction with any other antenna or transmitter.  
 Target Corp. Mktg. Mktg. 5640 Phone: 1-877-698-4883

back