

troubleshooting

- Double check that the USB-C charging cable and car charger are plugged in
- Certain phone cases may interfere with wireless charging. Remove the phone case for best results
- Double check the placement of the device on the wireless charger. For best results, the center of the device should be on the center of the wireless charger
- Wireless charging is compatible with iPhone 8 and newer as well as other Qi-enabled devices. Please consult your devices user manual if you are unsure if your device is compatible

need some help?

Can't get it to charge? Just have a question?

call us at: 877-698-4883 or: 877-MyTgtTech e-mail us at: TargetTechSupport.com

safety

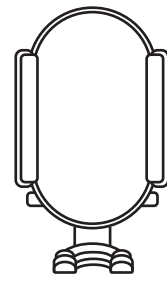
- Remove credit cards and other cards with magnetic strips to prevent damage to the cards
- Keep the charger away from heat and direct sunlight
- Do not modify or repair this device
- Do not use in high temperatures or extreme weather
- Do not use chemical detergents to clean your device, use a soft dry cloth
- Immediately unplug it from its power source if it gets wet



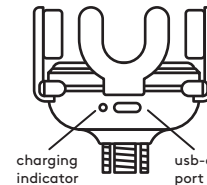
FCC ID: 2A023-CAB66 Model: CAB66 Input: 9V/2A 12V/1.5A Output: 10W Max Made in China  
 This device complies with Part 15 of the FCC rules. Operation is subject to the following two conditions: 1) this device may not cause harmful interference, and 2) this device must accept any interference received, including interference that may cause undesired operation.  
 Warning: Changes or modifications to this unit not expressly approved by the party responsible for compliance could void the user's authority to operate the equipment.  
 NOTE: This equipment has been tested and found to comply with the limits for a Class B digital device, pursuant to Part 15 of the FCC Rules. These limits are designed to provide reasonable protection against harmful interference in a residential installation. This equipment generates, uses and can radiate radio frequency energy and, if not installed and used in accordance with the instructions, may cause harmful interference to radio communications.  
 However, there is no guarantee that interference will not occur in a particular installation. If this equipment does cause harmful interference to radio or television reception, which can be determined by turning the equipment off and on, the user is encouraged to try to correct the interference by one or more of the following measures:  
 • Reorient or relocate the receiving antenna.  
 • Increase the separation between the equipment and receiver.  
 • Connect the equipment into an outlet on a circuit different from that to which the receiver is connected.  
 • Consult the dealer or an experienced radio/TV technician for help.  
 This equipment complies with FCC radiation exposure limits set forth for an uncontrolled environment. This equipment should be installed and operated with minimum distance 20cm between the radiator and your body. This transmitter must not be co-located or operating in conjunction with any other antenna or transmitter.  
 Target Corp. Mpls, MN, 55403 Phone: 612-354-6075

# charging car mount

front



bottom



quick tips

- Alignment matters - centering the device on the charging surface ensures the fastest and most efficient charge
- Thick phone cases as well as some materials can interfere with the ability to charge
- This is a high speed wireless charger. Make the most of the charger by using the USB-C charging cable and car charger that were packaged with it. Using a different power source may charge your device at a slower speed.

included

- Wireless charging car mount
- USB-C charging cable
- Car Charger

indicators

- Solid Red - Charging your device
- Solid White - Fully charged
- Flashing Red - Foreign object detection, pieces of metal or other materials may cause overheating and damage your charger or phone. Remove them immediately.

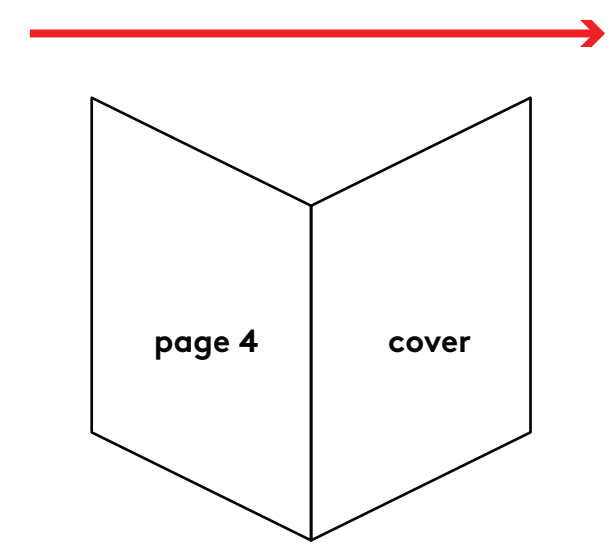
charging

- Follow the assembly instructions and make sure the mount is secure and in the desired position
- Plug the car charger into the aux outlet and connect to the car mount using the USB-C charging cable
- If you need to use a different power source make sure it is a USB power supply of DC 9V 2A minimum **warning:** please use UL compliant power supply
- Place your Qi-enabled device onto the wireless charger and align the device with the center of the charging surface or the device will not charge
- Remove credit cards or any card with a magnetic strip to prevent damage to the cards before charging
- Charge time will vary by device

5.6 in

DO NOT PRINT

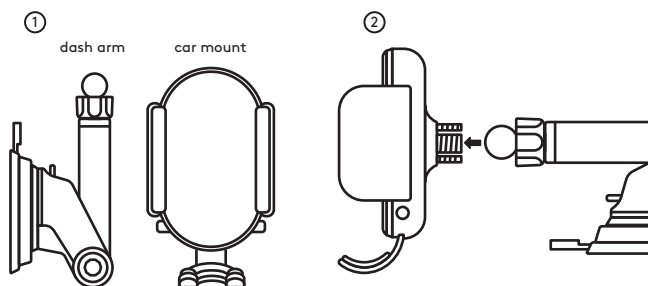
how to fold



page 4

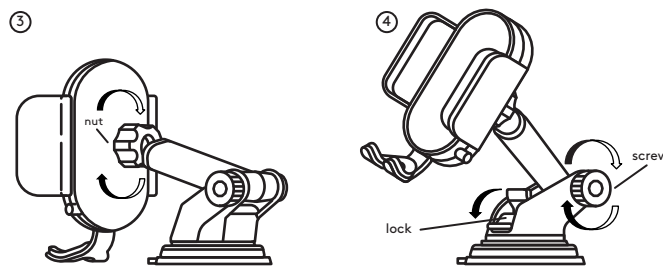
cover

# installation



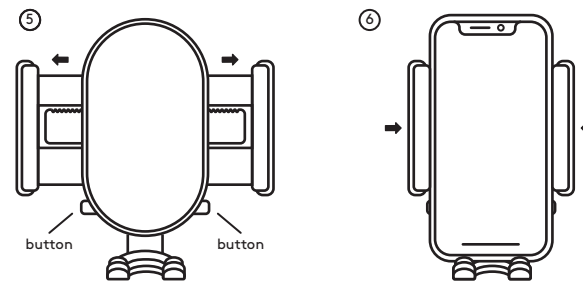
The car mount comes in two separate pieces and requires some assembly.

To assemble insert the ball joint on the dash arm into the back of the car mount. Be sure not to press too hard so you do not damage either part of the mount.



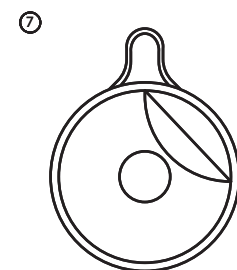
Twist the nut on the on the dash arm to attach it to the car mount. Be sure to twist the nut all the way onto the mount or it will not stay up right when the phone is inserted.

Clean the dash board or window and place the assembled mount onto it. Press down the lock under the arm to lock the suction. Then adjust the dash arm and tighten the screw to lock it into the desired position.



To open the mount press the two buttons on the bottom of the car mount at the same time. The arms will automatically span out.

Place your phone into the mount and press the arms in to secure it. If you need to adjust or remove your phone follow step 5.



Certain surfaces may cause issues with the suction lock. If you're having issues use the mounting plate to create a smooth surface. To use it, clean the desired surface, remove the adhesive backing, press on the desired location, and wait 3-5 minutes before use. Follow step 4 to mount.

installation tips

- If the mount won't stay upright be sure that the dash arm is fully screwed into the mount
- If you can't remove the dash arm, make sure the lock is flipped up and use the tabs on the suction cup to help break the seal
- If the suction cup is having issues sticking, it may need to be cleaned. Rinse under cold water to wash away any debris and refresh the sticky gel. Wait for it to dry before use.

**warning:** Driving while distracted is dangerous. Do not use your phone while your vehicle is in motion. Check your states laws on window and dash mounts to ensure you're not breaking them.

5.6 in