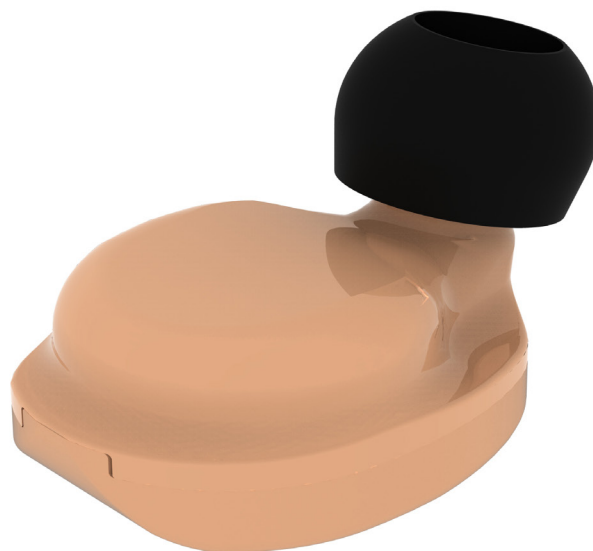


INEAR

User Guide



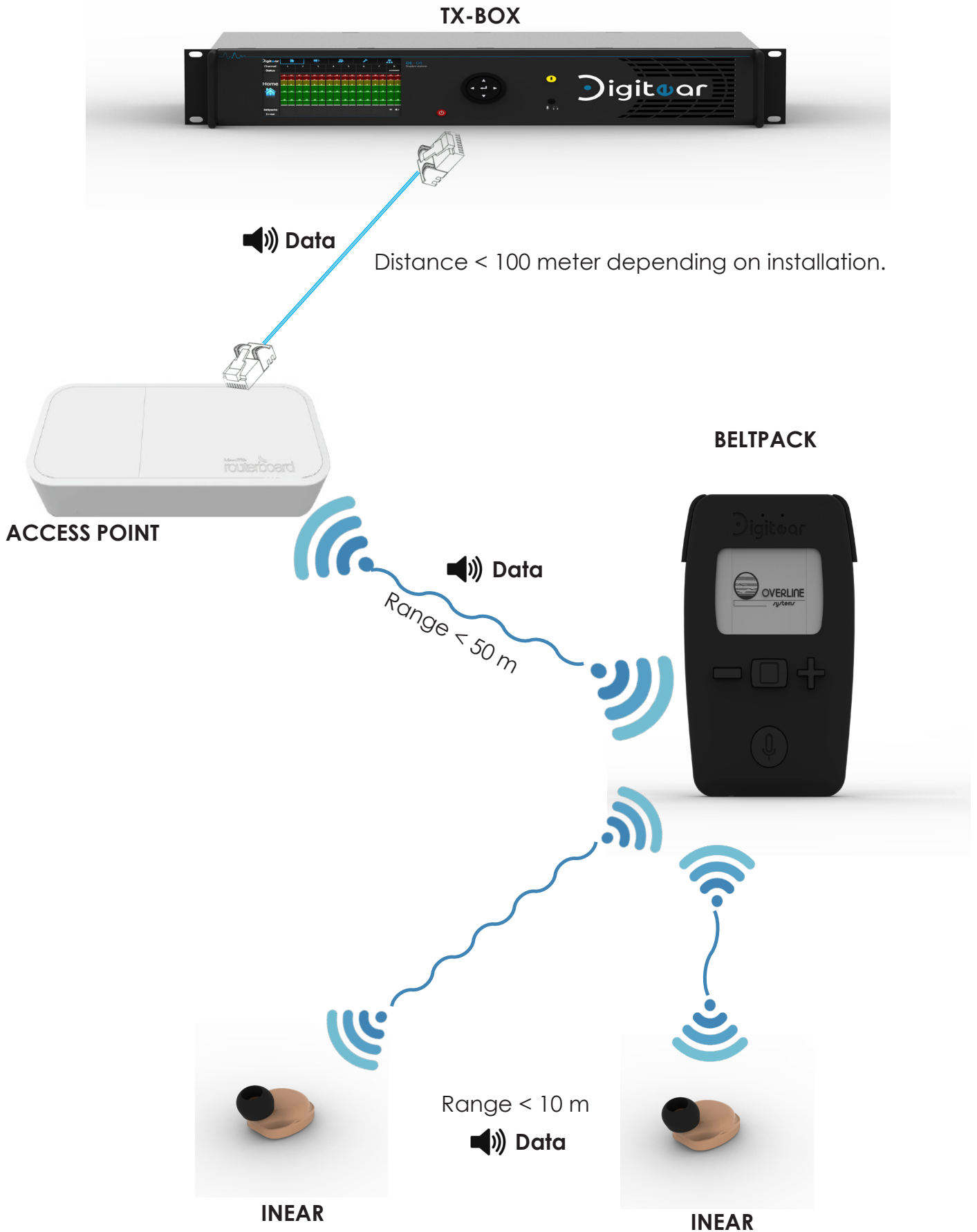
CE
FCC ID : 2ANZJDENR1
IC : 23304-DENR1

DE-NR INEAR

CONTENTS

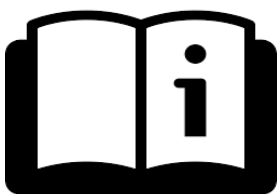
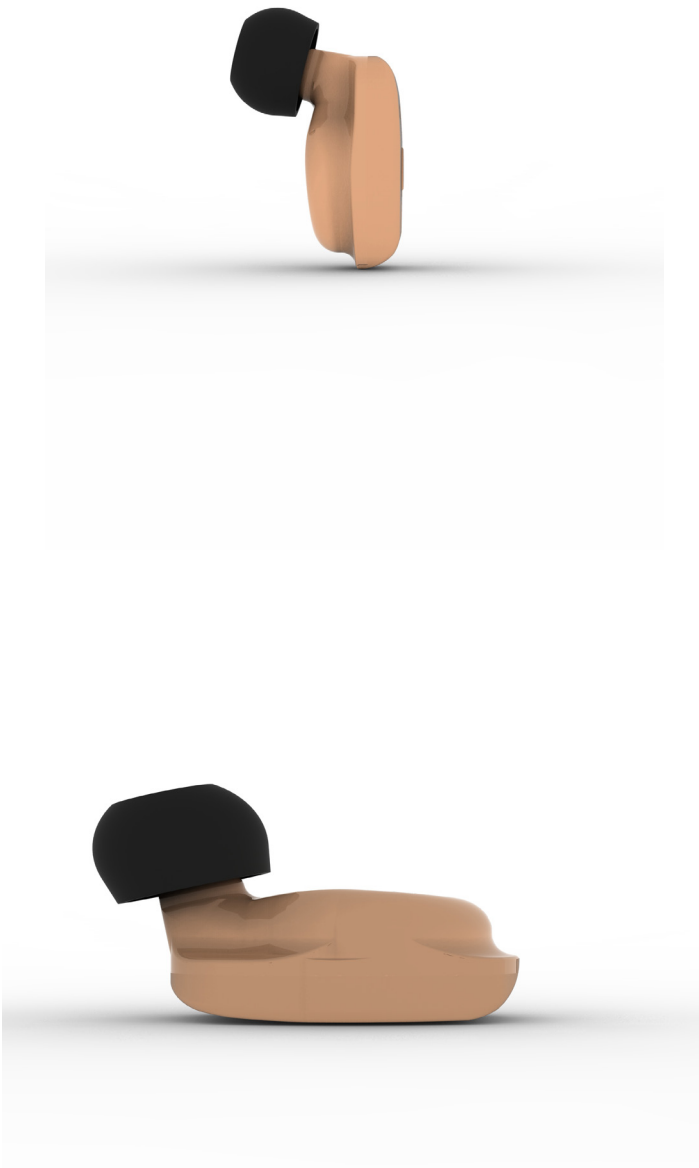
1 - DESCRIPTION OF THE SYSTEM	3
2 - OVERVIEW	4
3 - LIST OF SUPPLIED ACCESSORIES	5
4 - INEAR DESCRIPTION	5
5 - OPERATION INEAR	6
6 - TECHNICAL FEATURES	8
7 - TECHNICAL TROUBLESHOOTING	9
8 - WARRANTY	10
9 - REGULATORY COMPLIANCE	11

1 - DESCRIPTION OF THE SYSTEM



2 - OVERVIEW

A wireless in-ear design, which receives the digital audio stream from the BELTPACK.



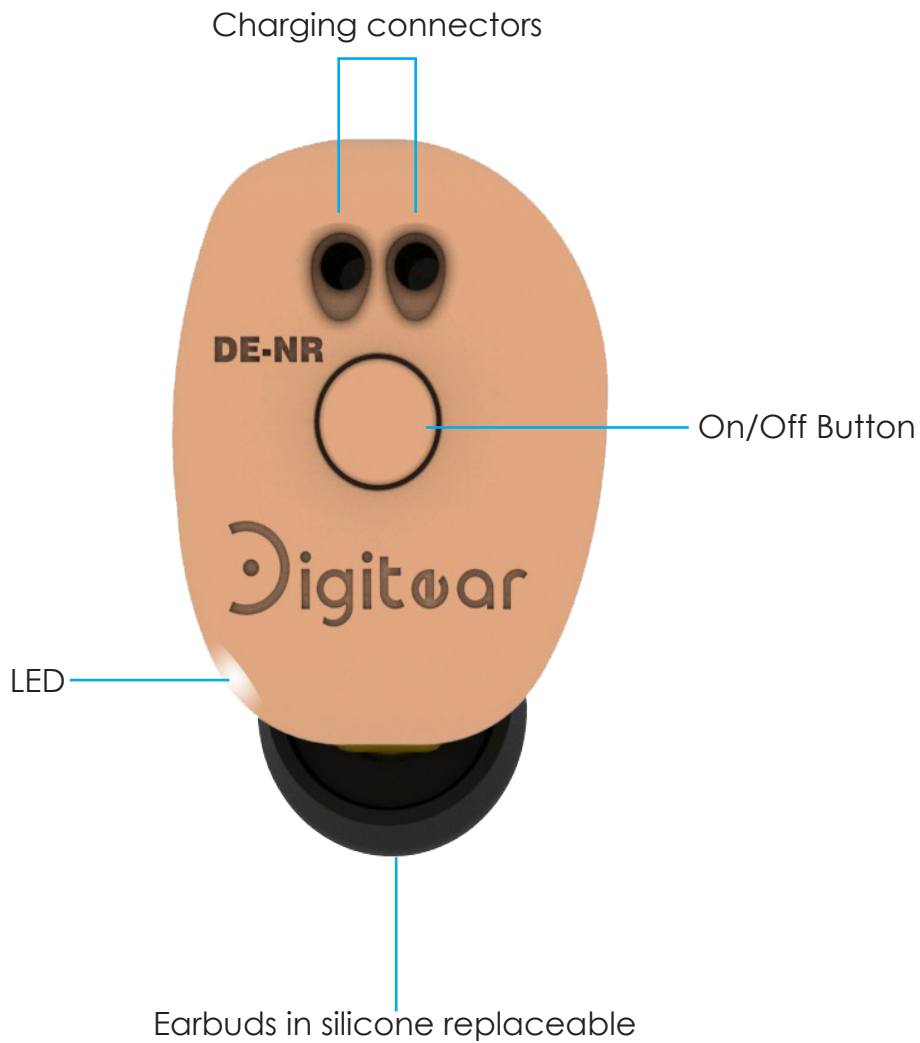
User Guide available to download from www.digitear.eu

3 - LIST OF SUPPLIED ACCESSORIES

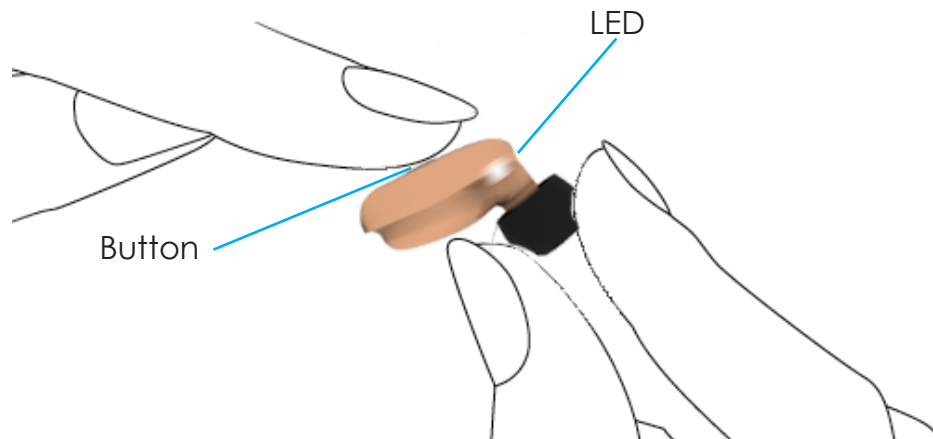


Replacement ear buds x3

4 - INEAR DESCRIPTION



5 - OPERATION INEAR



The wireless INEAR has a LED which indicates delivering multiple information to the user.

“Discoverable” mode :

The INEAR is enabled to be visible for all BELTPACK. Press and hold the INEAR button for 6 seconds in order to start the discoverable mode. This mode is used to pair an INEAR with a BELTPACK.

The LED will flash :

If the INEAR is already paired to a BELTPACK when it is switched on, it will be in “Connectable” mode.

- Fast flashing for 120 seconds.

If the INEAR is not paired to a BELTPACK when it is switched on, it will be in "Discoverable" mode.

Operating as Connectable :

The INEAR was recently paired, and integrated in the BELTPACK.

It will be identified and connected automatically by the BELTPACK. If it does not automatically connect to the BELTPACK, it is because it is not paired.

The LED will flash :

- Two rapid flashes.
- Followed by a two-second pause.
- Two rapid flashes.

Charge operation :

When the INEAR is charging, the LED provides information about the state of charge.

Charging :

-Two flashing pulses each 2 seconds..

Charge 100% :

- The LED turns off completely.

Operation Flashing:

By activating the "Find IE" menu of the BELTPACK, the LED indicates that the INEAR is connected.

The LED will flash :

- Quick flash
- Pause.
- Quick flash

The cycle will be repeated during 11 seconds.

Power OFF Operation:

To turn off the INEAR, press the button for at least 2.5s.

The LED will flash :

LED remains alight for 1 second and then it turns off..

Alive Mode Operation:

If the INEAR is connected and turned on, then no light signal is visible.

In order to check the INEAR status, just press the button shortly. A quick flash will indicate its operation status.

Technical notes

- When a battery autonomy is low a beep sounds every minute in order to indicate the low battery status of the INEAR. There is now only 15 minutes of autonomy left.
- A paired INEAR connects automatically to the BELTPACK if it is located within its range.
- The pairing procedure is explained in the BELTPACK user guide.
- In order to utilize the dual stream (see BELTPACK User Guide), a second INEAR must be paired. The one that is already paired must be switched off. The second INEAR will then be paired. Then the first INEAR can be re-turned on and both INEARs can be used in the dual stream mode.

6 - TECHNICAL FEATURES

Audio

Codec	APTX
Resolution	16-bit / 44 kHz
SNR	92 dB
Bandwidth	0,1 .. 14 kHz

Radio

Version	Bluetooth 4.2
Class	Class 1
Range of frequencies	2400 MHz - 2483 MHz
Open field range	<10 meters

Battery

Type	CP1254A3 CoinPower 60mAh
Operating life	110 minutes in continuous operation./ approx 6 h in Eco Mode
Recharging	2 hours, more than 300 recharge cycles
Nominal voltage (DC)	3.7 V
Operating conditions	5 °C to 45 °C

Materials

Exterior materials	ABS-PC
Weight	4 g
Size	(19.5x15x9) mm
Earbuds material	Silicone

7 - TECHNICAL TROUBLESHOOTING

- Does not turn 'ON' despite pressing :
 - > Restart a charge cycle
 - > Check that the charging process is flashing
 - > Contact the technical support
- The sound is too low :
 - > Adjust the volume from the BELTPACK
 - > Increase the level of the input signal of the TxBox
 - > Contact the technical support
- The INEAR does not connect:
 - > Check whether it is the right BELTPACK
 - > Repeat the pairing operation (see the BELTPACK User Manual)
 - > Contact the technical support
- The INEAR does not charge :
 - > Clean the charging contacts of the INEAR and the Charger Box
 - > Contact the technical support

8 - WARRANTY

Elements NOT covered by the guarantee.

This warranty covers only defects in parts and manufacturing of the product. This warranty does not cover:

- Periodic maintenance and repair or replacement of parts as a result of normal wear and tear.
- Transportation costs and the risks associated with the sending and retrieval of the product by the final customer
- Any adaptation of the product which would be necessary for the purpose of complying with the technical or safety standards applicable in a country other than that for which the product was originally designed and manufactured;
- Consumable elements (elements which are intended to be replaced periodically during the life of the product, for example ear tips, batteries-beyond 12 months to date of purchase-, connecting cables, etc.);
- Damage or defects in the product resulting from:
 - Improper use or installation of the product (use or installation not in accordance with the use to which the product is intended, installation or use not in accordance with the Digitear instructions or the technical or safety standards in force in the country where it is used, etc.)
 - Maintenance of the product not in accordance with the Digitear instructions or negligence in the maintenance of the product.
 - Improper handling or mistreatment of the product (false maneuvers, fall, shock, immersion, etc.) or an improper environment (poor ventilation, vibration, exposure to moisture, excessive heat, contact with sand or any Other substance, improper power supply, etc.)
 - The use of the product with a product (hardware or software), consumable, accessory or peripheral not compatible or defective, an adaptation of the product for the purpose of complying with the technical or safety standards applicable in a country other than that for which the product was originally designed and manufactured;
 - A modification or repair of the product not carried out by a service provider approved by Overline Systems
 - Cases of force majeure, sinister (fire, flood, etc.), lightning, etc.
- Produit: DIGITEAR (TX-BOX, Charger Box, BELTPACK, INEAR)

Warranty Period:

24 months parts and labor in workshop

Battery: 12 months (starting from the date of purchase)

ACCESS POINT: Covered by the original manufacturer's warranty.

No sole accessory will be accepted or repaired by our repair centers.

9 - REGULATORY COMPLIANCE

- Any changes or modifications made to this equipment not expressly approved by OVERLINE Systems may void the authorization to operate this equipment.

Item (HVIN) : DE-NR INEAR
Type identification : DE-NR-001
PMN : Digtear

CE

This product complies to the following requirements :

Radio :
ETSI EN 300328 V2.1.1

Electromagnetic compatibility :
ETSI EN 301 489-1 V2.2.0 (DRAFT)
ETSI EN 301 489-17 V3.2.0 (DRAFT)

Safety :
IEC 62368-1: 2014 (2.Edition) and Cor. 1: 2015
EN 62368-1: 2014/AC: 2015/A11: 2017

RF exposure :
EN 50666:2013/AC:2014
EN 62209-2 (2010)
1999/519/EC

DoC available : www.digtear.eu

FCC ID : 2ANZJDENR1
IC : 23304-DENR1

This product complies to the following requirements :

47 CFR Part 15
RSS-247 Issue 2
RSS-Gen Issue 4

NOTICE: This device complies with Part 15 of the FCC Rules and with Industry Canada licence-exempt RSS standard(s).

Operation is subject to the following two conditions:

- this device may not cause harmful interference, and
- this device must accept any interference received, including interference that may cause undesired operation.

RF exposure :
IEEE 1528-2013
RSS-102 Issue 5

Radiofrequency radiation exposure Information:

- This equipment complies with FCC radiation exposure limits set forth for an uncontrolled environment. This transmitter must not be co-located or operating in conjunction with any other antenna or transmitter.

Radiofrequency radiation exposure Information:

- The radiated output power of the device is far below the FCC radio frequency exposure limits. Nevertheless, the device shall be used in such a manner that the potential for human contact during normal operation is minimized.