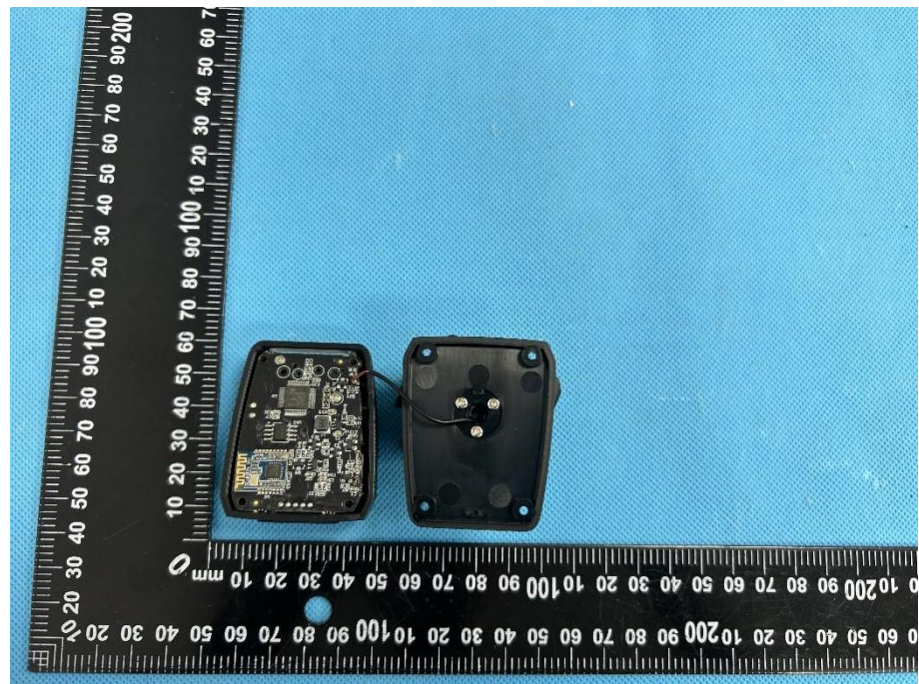


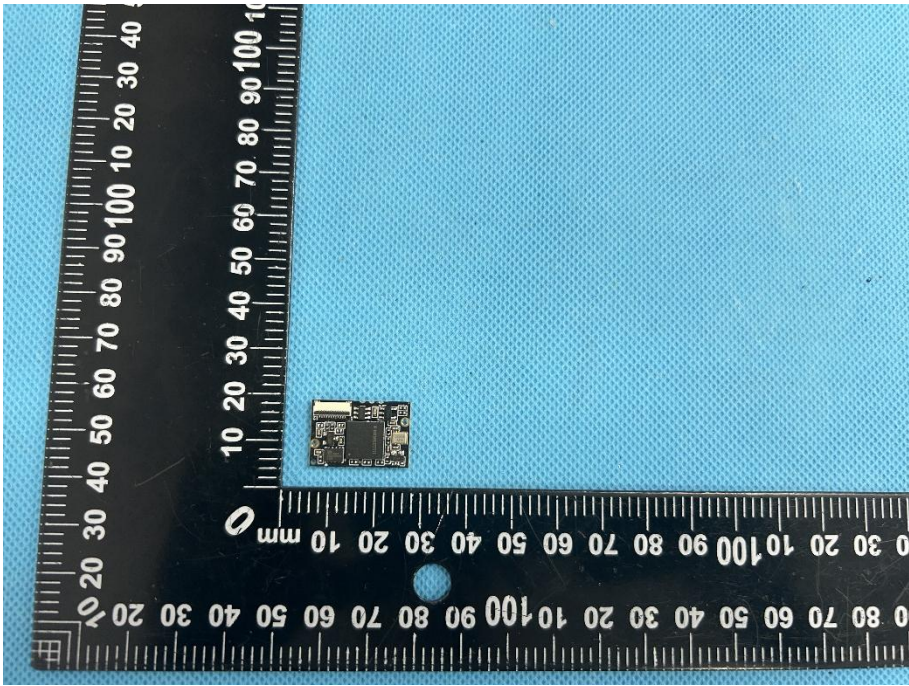
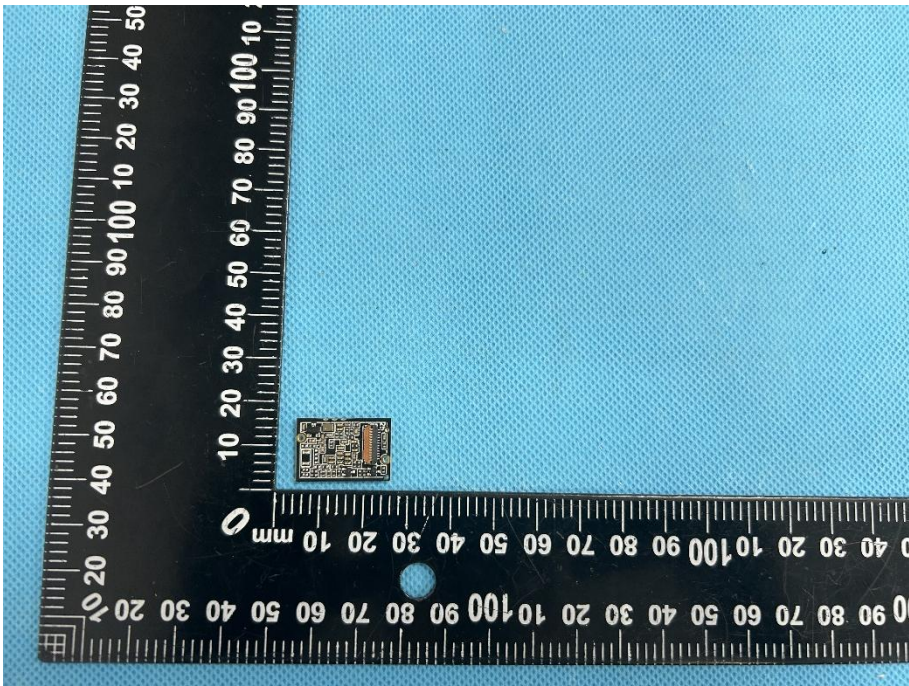
EXHIBIT 3 - EUT INTERNAL PHOTOGRAPHS

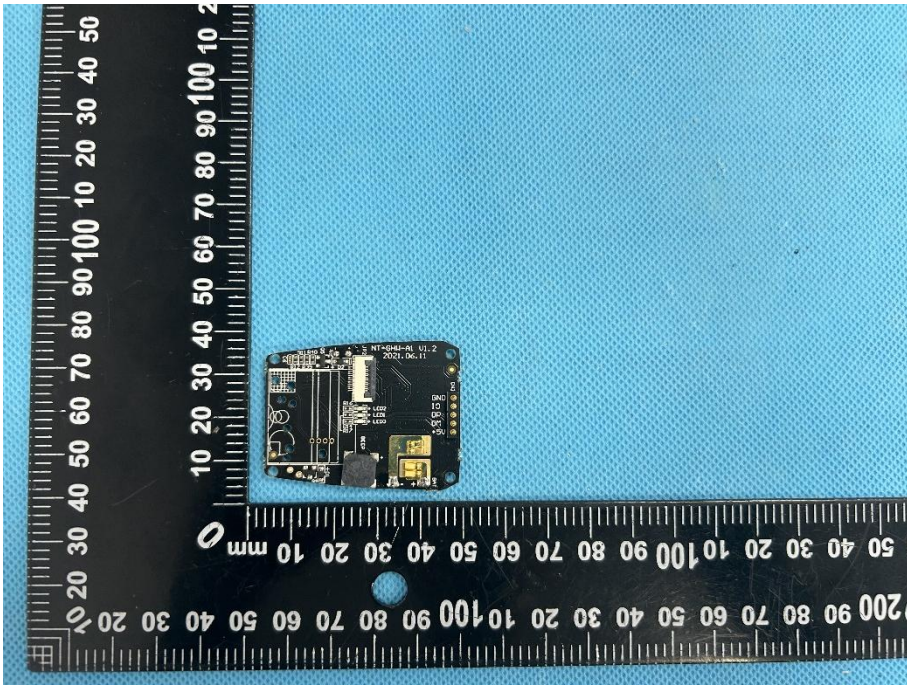
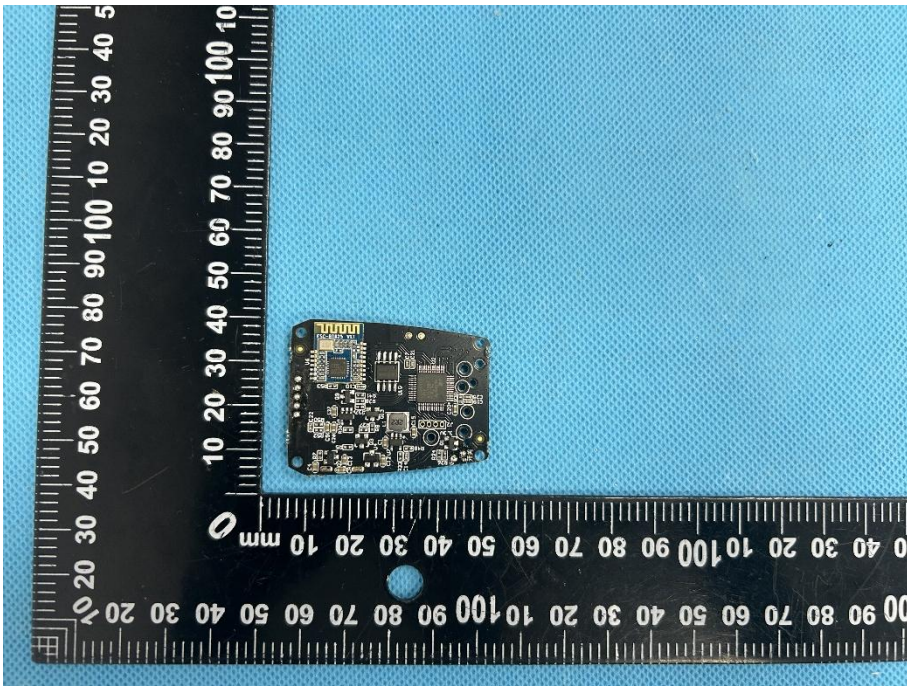
**EUT Housing and
Board View 1**

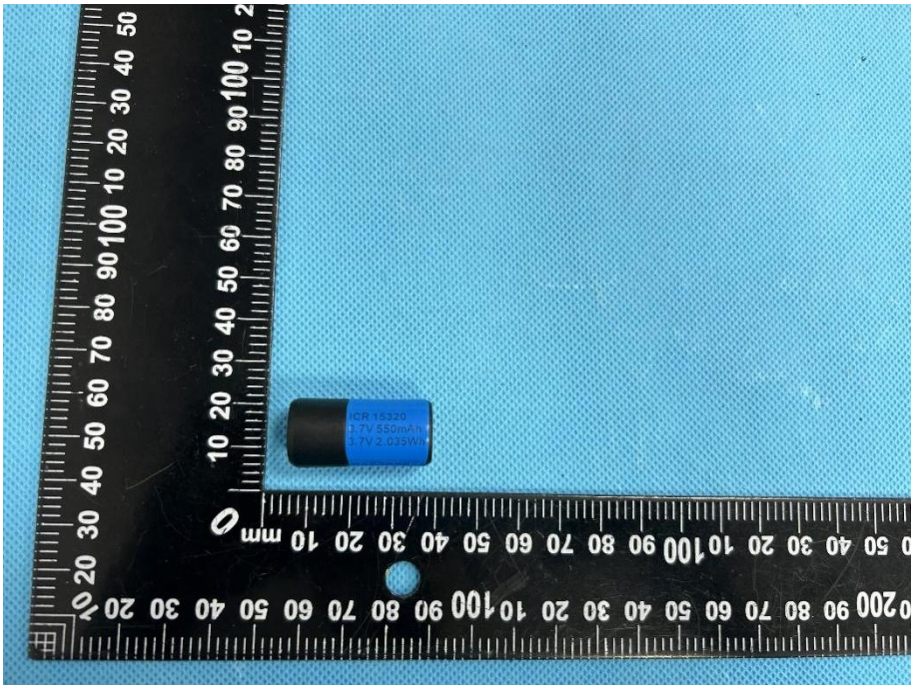
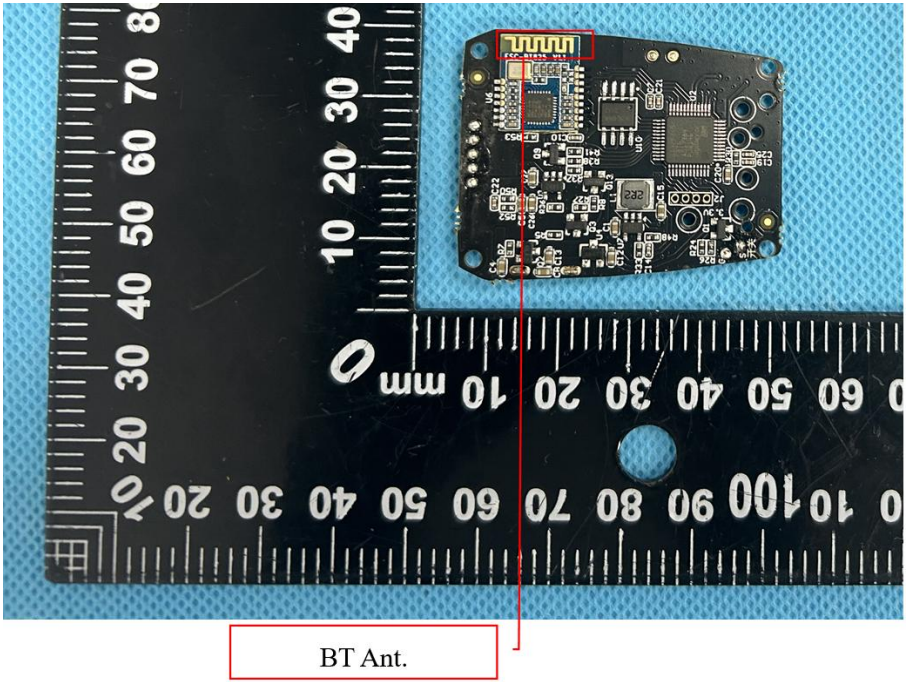


**EUT Housing and
Board View 2**



<p>Solder Board-Component View 1</p>	 A photograph of a small, square, gold-colored solder board component. The component is positioned on a blue textured surface. A black L-shaped ruler is placed next to it for scale. The ruler has white markings in millimeters and centimeters. The component is located approximately at the 10 mm mark on the vertical ruler and the 30 mm mark on the horizontal ruler.
<p>Solder Board-Component View 2</p>	 A photograph of the same solder board component from a different perspective. The component is positioned on a blue textured surface. A black L-shaped ruler is placed next to it for scale. The ruler has white markings in millimeters and centimeters. The component is located approximately at the 10 mm mark on the vertical ruler and the 30 mm mark on the horizontal ruler.

<p>Solder Board-Component View 3</p>	 A photograph showing a small, rectangular, black PCB component. The component is positioned on a blue textured surface. A black L-shaped ruler is placed around the component for scale. The ruler has white markings in millimeters and centimeters. The component is oriented vertically, with its longer side parallel to the ruler's vertical edge. The component has various components on its surface, including a large chip, several smaller components, and a connector on the right side. The text "NT-044-A1 V1.2" and "2021.06.11" is visible on the component.
<p>Solder Board-Component View 4</p>	 A photograph showing the same small, rectangular, black PCB component from a different perspective. The component is positioned on a blue textured surface. A black L-shaped ruler is placed around the component for scale. The ruler has white markings in millimeters and centimeters. The component is oriented vertically, with its longer side parallel to the ruler's vertical edge. The component has various components on its surface, including a large chip, several smaller components, and a connector on the left side. The text "NT-044-A1 V1.2" and "2021.06.11" is visible on the component.

<p>Solder Board-Component View 5</p>	
<p>Antenna View</p>	 <p>BT Ant.</p>