

## TE580PD Quick Start Guide



Thanks for choosing our product!

This Quick Start Guide Only applicable to: **TE580PD**.

Before using the product, please read the Quick Start Guide to fully benefit from it.

### ● Note

- Before using the product, please read the Quick Guide to fully benefit from it.
- This product involves constant upgrading and/or improvement, our company reserves the right to change the specifications of software and/or hardware mentioned in this operating guide without any prior notice. The product specifications and information mentioned in the operating guide are for reference only.
- All pictures in this manual are for reference only

### ● Check list

- Please check the following accessories before you discard the packing material. Please contact your local dealer immediately if there is anything missed or damaged.

Accessories	Quantity
TE580PD	1
Antenna	1
USB Data Cable	1
Battery	1
Charger	1
Quick Start Guide	1

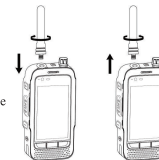
### 1. Overview of TE580PD



### 2. Installation of Antenna and SIM card

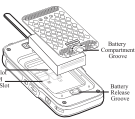
How to attach the antenna:

1. Insert the screw into the screw hole
2. Turn the antenna clockwise to fasten it on the device.



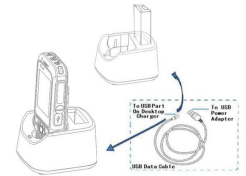
How to attach the Sim card:

1. Anticlockwise the switch of battery cover, open it and remove battery
2. Insert the SIM card as shown in the picture
3. Insert the SD card into the slot as shown in the picture
4. Put back the battery and the battery cover and press the cover firmly before clockwise the switch



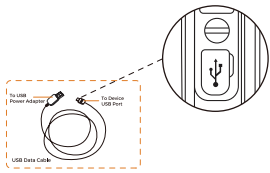
### 3. Charging the Battery

#### ● Using Desktop Charger



Connect the Desktop Charger and the Power Adapter using the USB Data Cable.

● **Charging with USB port**



Connect the phone and power adapter using the USB Data Cable

● **LED indicator light**

Operating state	Indication
Battery Low	Red (Blinking)
Charging	Red (Steady)
Full charged or nearly full charged	Green (Steady)

**Important:**

Do not use the above two charging methods simultaneously. Battery must be fully charged before first use.

**4. Basic operations**

● **Startup**

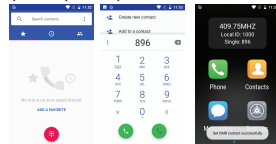
Press the power on button for 3 seconds, the device will start up.

● **Shut Down**

Press the power off button for 3 seconds, then tap the "Power off" menu to shut down the device.

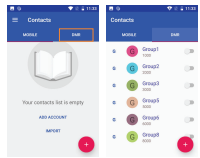
● **Individual Call**

An individual call is a call from an individual device to another individual device. All of the devices are identified by ID, it can be input in dial pad. Then press PTT button to transmit voice to this ID.



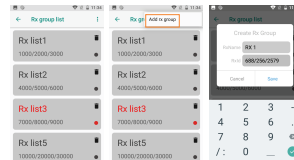
● **Group Call**

Select a group contact in "Contacts" app then press PTT button to call this group.



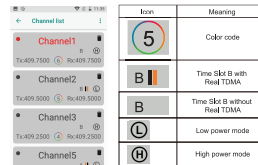
● **Rx List Settings**

Go to "Settings – Network & Internet – DMR – DMR parameters modify – Rx group list" to set up current Rx List. The device only performs the group voice call in the current activated Rx List.



● **Channel Viewing**

Go to "Settings – Network & Internet – DMR – DMR parameters modify – Channel list" to view and set up current Channel List. It is also possible to switch the channel by turn the rotate knob.



● **Local ID**

Go to "Settings – Network & Internet – DMR – DMR parameters modify – Local ID" to set up current Local ID. This ID is for this device itself, other device can make a call to this device by the Local ID.

● **Volume**

Go to "Settings – Network & Internet – DMR – DMR parameters modify – Volume" to turn up and down the volume.

● **Mic Gain**

Go to "Settings – Network & Internet – DMR – DMR parameters modify – Mic gain" to turn up and down the Mic Gain.

● **Mode Switching**

Go to "Settings – Network & Internet – DMR – DMR mode modify" to switch the modes, there are two modes:

● **DMR mode:**

In this mode, the DMR function is activated, the device can receive and transmit DMR signal, the PTT button is dedicated for DMR app.

● **POC mode:**

In this mode, the DMR function is disabled, the device can not receive and transmit DMR signal, it is better when only POC is needed, it can save power and avoid mis-operation.

**5. Caution**

● Risk of explosion, fire or chemical burns if battery is disassembled, crushed, stricken, trampled, short-circuited, incinerated or exposed to high temperature over 60°C.

● Do not hold the device by the antenna, as it may reduce the device performance and life span of the antenna.

● Don't use damaged or weeping battery. Keep the battery dry and not reachable for children. Use the supplied adapter or docking station to charge.

● Replace the battery with battery supplied by the original factory, or it will bring uncertain harm to the device.

● Properly dispose of defective batteries in accordance with local regulations.

● To know more details about above operations, please refer to [www.telosystems.com](http://www.telosystems.com) or contact with us [support@telosystems.com](mailto:support@telosystems.com); Tel: +86-755-86950766.



## FCC Statement

### **15.19 Labeling requirements.**

This device complies with part 15 of the FCC Rules. Operation is subject to the following two conditions: (1) This device may not cause harmful interference, and (2) this device must accept any interference received, including interference that may cause undesired operation.

### **15.21 Information to user.**

Any Changes or modifications not expressly approved by the party responsible for compliance could void the user's authority to operate the equipment.

### **15.105 Information to user.**

This equipment has been tested and found to comply with the limits for a Class B digital device, pursuant to Part 15 of the FCC Rules. These limits are designed to provide reasonable protection against harmful interference in a residential installation. This equipment generates uses and can radiate radio frequency energy and, if not installed and used in accordance with the instructions, may cause harmful interference to radio communications. However, there is no guarantee that interference will not occur in a particular installation. If this equipment does cause harmful interference to radio or television reception, which can be determined by turning the equipment off and on, the user is encouraged to try to correct the interference by one or more of the following measures:

- Reorient or relocate the receiving antenna.
- Increase the separation between the equipment and receiver.
- Connect the equipment into an outlet on a circuit different from that to which the receiver is connected.
- Consult the dealer or an experienced radio/TV technician for help.

### **Specific Absorption Rate (SAR) information:**

This product meets the government's requirements for exposure to radio waves. The guidelines are based on standards that were developed by independent scientific organizations through periodic and thorough evaluation of scientific studies. The standards include a substantial safety margin designed to assure the safety of all persons regardless of age or health.

This device was tested for typical body-worn operations with 10mm and 25mm from front of face. The use of belt clips, holsters and similar accessories should not contain metallic components in its assembly. The use of accessories that do not satisfy these requirements may not comply with FCC RF exposure requirements, and should be avoided.

### **Body-worn Operation**

This device was tested for typical body-worn operations. To comply with RF exposure requirements, a minimum separation distance of 10mm for body must be maintained between the user's body, including the antenna. Third-party belt-clips, holsters, and similar accessories used by this device should not contain any metallic components. Body-worn accessories that do not meet these requirements may not comply with RF exposure requirements and should be avoided. Use only the supplied or an approved antenna.

### **Dedicated network part**

This radio is designed for and classified as "Occupational/Controlled Use Only", meaning it must be used only during the course of employment by individuals aware of the hazards, and the ways to minimize such hazards; NOT intended for use in an General population/ uncontrolled environment.

- DO NOT operate the radio without a proper antenna attached, as this may damage the radio and may also cause you to exceed RF exposure limits. A proper antenna is the antenna supplied with this radio by the manufacturer or an antenna specifically authorized by the manufacturer for use with this radio.

- DO NOT transmit for more than 50% of total radio use time, more than 50% of the time can cause RF exposure compliance requirements to be exceeded.

- This transmitter may operate with the antenna(s) documented in this filing in Push-to-Talk and body-worn configurations.

RF exposure compliance is limited to the specific belt-clip and accessory configurations as documented in this filing and the separation distance between user and the device or its antenna shall be at least 25 mm.

