

120.00 mm

100.00 mm

USE MANUAL

Product Name: Bluetooth Wireless Speaker
Model: TL-100, TL-100A, TL-200, TL-300, TL-500



Manufacture: Shenzhen KeSiDong Electronic Technology Co., Ltd.

Thank you for your purchase, please read the user guide carefully before using Desk Lamp Bluetooth Speaker. In order to ensure the best use performance, please plug USB charging cable (included) into computer USB interface which can be normal power supply or power adapter which output voltage is 5V to charge desk lamp. The red indicator is on when charging, it is off when the battery is fully charged, charging time is about 4-5 hours. Please keep this manual for future reference.

PRODUCT DESCRIPTION

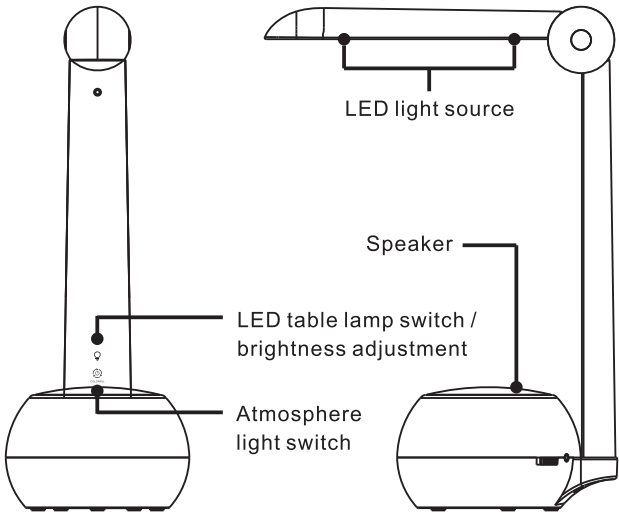
This product is multifunctional, LED eye-protection lamp, colorful atmosphere lights and Bluetooth speaker. Soft and colorful atmosphere lamp, clear Bluetooth speaker sound quality, it can be used for local lighting in study room, bedroom, office and other work areas. Professional optical design, anti-glare, not dazzling. One touch key can control three levels dimming, simple and generous, meet different brightness requirement. Our desk lamp is made of high-quality super-bright LED, soft color temperature, high efficiency, long lifetime, energy saving and environmental protection.

PACKAGE CONTENTS

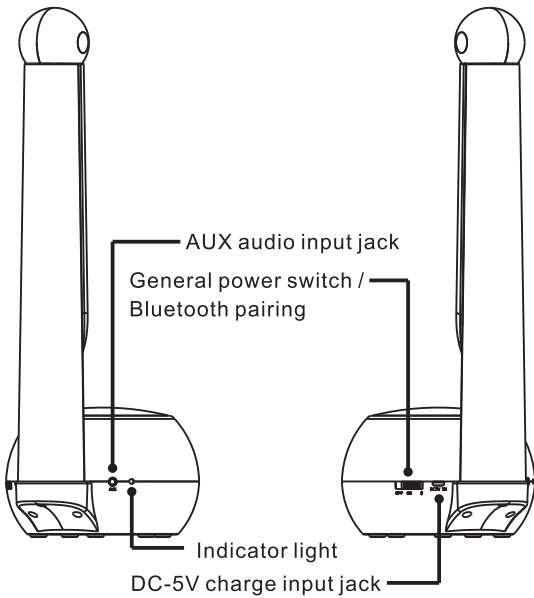
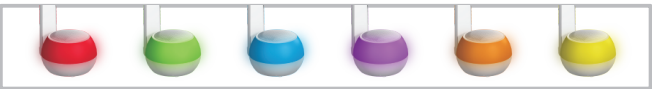
- 1 x LED Desk Lamp Bluetooth Speaker
- 1 x User Manual
- 1 x USB Charging Cable
- 1 x Audio Input Cable

USE GUIDANCE

- Atmosphere light switch
- LED table lamp switch / brightness adjustment
- LED light source
- AUX audio input jack
- DC-5V charge input jack
- Indicator light
- General power switch / Bluetooth pairing



COLOR ATMOSPHERE LAMP



MAIN FUNCTION

- Bluetooth Audio: Bluetooth 4.1, Bluetooth transmission range is 10m.
- AUX Audio Input: 3.5mm stereo audio input interface, easily connect computers, digital players, smart phone and other devices.
- Bluetooth Connection Method: Open the device power switch, dial to the Bluetooth file, the device go into the Bluetooth mode when the indicator light blinks blue. Turn on phone's Bluetooth function, search the device name "TL-100" in Bluetooth list, click the device name to connect (If there need to enter password, the password: 0000). The device that is successfully connected will automatically connect when Bluetooth is turned on again.
- Colorful Atmosphere Light Operation: Open power switch, short press to turn on atmosphere light, and then press for changing light color, followed by: Red-Green- Blue-Purple-Orange-Yellow-Circle-Off.
- Desk Lamp Operation: Open power switch, short press to turn on LED desk lamp, short press again to control brightness, there are three brightness you can select.
- Please use USB / 5V power supply, LED light is red when charging, when full charging after 4-5 hours the LED red light is off.

- ⚠ When the device power is low, it will voice prompts and automatically shut down. When use again, please dial power switch to "OFF" to shut down the device, fully charging, then re-open the device.
- ⚠ When not use, please dial the power switch to "OFF" to shut down the device, avoiding built-in battery power exhausted.

TECHNICAL SPECIFICATIONS

Luminance level: 3 levels dimming (Low/Middle/High)
Brightness: 200LM
Color Temperature: 4000-5500K+Colorful Atmosphere LED
Maximum Illumination: >900LUX(35cm)
Color Rendering Index: >80%
Battery voltage: lithium battery 3.7V/2000mA h
Charging Input: DC-5V 2200mA
Wattage: 4.5W
Bluetooth Version: V4.2+EDR
Bluetooth Protocol: A2DP1.2
Bluetooth Frequency: 2.4GHZ-2.48GHZ
Bluetooth Audio Output Power: 3W
System Frequency Response: 100Hz-20KHz
Signal-to-noise Ratio: ≥ 75dB
Total Harmonic Distortion: ≤ 1% (1W 1KHz)

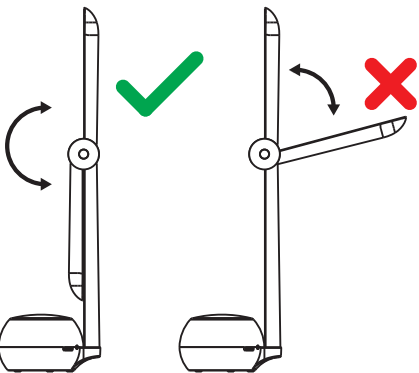
SAFETY PRECAUTIONS

- Warning: To prevent the accident occurrence of threatens personal safety like lamp damage, electric shock, fire, please strictly follow the instruction to operate, not modify lamp and replace parts by your own.
- Do not use over rated voltage range power supply (rated charge voltage of DC5V).
 - Do not use power supply witch output voltage does not match requirement to charge the product.
 - Do not place product in unstable place.
 - Do not place product in flammable damp place.

MAINTENANCE TIPS

- In order to maintain you and your family' body mind health, and extend the product's life, please do not enjoy music in large volume environment for a long time.
- When error occurred, please unplug the USB plug, turn off the power, to prevent important internal devices damage.
- Do not place the product in damp, high temperature, oil and other harsh environments, to avoid direct sunlight and rain.
- When there is dirt in product surface, please do not use corrosive or organic solvent cleaning, use a damp cloth with little detergent to wipe it.
- The battery charging time is about 4-5 hours.
- Do not disassemble the product without authorization, when error occurred, please contact the product distributor to overhaul.

TABLE LAMP ADJUSTMENT ANGEL AND PRECAUTIONS



Note: When using the product, please use it as above, beyond angle range will lead to product damage.

FCC Caution.

This device complies with part 15 of the FCC Rules. Operation is subject to the following two conditions:

- (1) This device may not cause harmful interference, and
- (2) this device must accept any interference received, including interference that may cause undesired operation.

Any Changes or modifications not expressly approved by the party responsible for compliance could void the user's authority to operate the equipment.

Note: This equipment has been tested and found to comply with the limits for a Class B digital device, pursuant to part 15 of the FCC Rules. These limits are designed to provide reasonable protection against harmful interference in a residential installation. This equipment generates uses and can radiate radio frequency energy and, if not installed and used in accordance with the instructions, may cause harmful interference to radio communications. However, there is no guarantee that interference will not occur in a particular installation. If this equipment does cause harmful interference to radio or television reception, which can be determined by turning the equipment off and on, the user is encouraged to try to correct the interference by one or more of the following measures:

- Reorient or relocate the receiving antenna.
- Increase the separation between the equipment and receiver.
- Connect the equipment into an outlet on a circuit different from that to which the receiver is connected.
- Consult the dealer or an experienced radio/TV technician for help.

The device has been evaluated to meet general RF exposure requirement. The device can be used in portable exposure condition without restriction.