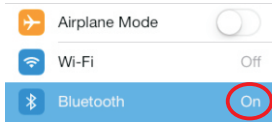
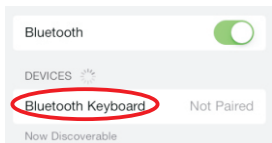


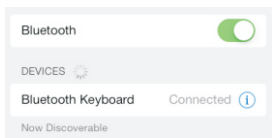
(2)



(3)



(4)



(5)

### Troubleshooting

- If the keyboard is not working with the Tablet PC (or other Bluetooth devices) make sure:
  - 1) The Bluetooth function on the iPad (or other Bluetooth devices) is enabled.
  - 2) The Bluetooth keyboard is within 33 feet of the iPad.
  - 3) The passkey is entered correctly.
  - 4) Make sure the keyboard is charged, recharge if low.
  - 5) If the pairing between the keyboard and tablet PC is failed or wrong character and typing delayed. Please do pairing again with the following procedures:
    - Delete all the Bluetooth device on the tablet PC
    - Switch off the Bluetooth function on the tablet PC
    - Reboot the tablet PC
    - Switch on Bluetooth function on your tablet pc and pair again

### Product Specifications

- 1) Transmit Range: up to 10 meters
- 2) Range of Frequency: 2.4GHz Spectrum
- 3) Operating Voltage: 3.7Vdc (powered by Li-ion)
- 4) Operation current: <5mA
- 5) Standby current: 1.0mA
- 6) Sleep current: <0.1mA

- This device complies with Part 15 of the FCC Rules: Operation is subject to the following two conditions:
  1. This device may not cause harmful interference and
  2. This device must accept any interference that is received, including any interference that may cause undesired operation.

# User Guide

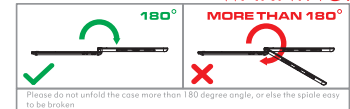
## Wireless Keyboard

Product Name:Bluetooth Wireless Keyboard

Model:K765,K760, K761, K762, K763, K766, K768, K769

Manufacture: Shenzhen KeSiDong Electronic Technology Co., Ltd.

**WARNING:**



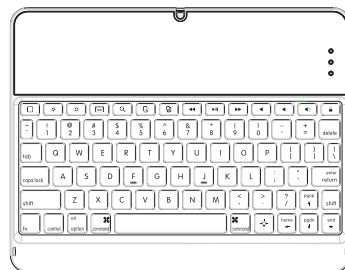
**Caution:** To properly operate this product, please read the user manual thoroughly.

### Schematic diagram

### Installation and removal

- 1) Removing back protective piece. Hold Tablet PC on both sides (picture) gently push back cover off the Tablet PC with thumb (back piece held in place by two tabs.)
- 2) Proceed to "peel" cover away from Tablet PC
- 3) Take Tablet PC out
- 4) Take Tablet PC out upwards.

### Keyboard



### Using

- 1) Open the protective case
- 2) 180 degrees rotate protective case
- 3) 360 degrees rotate
- 4) Adjust the rotation axis angle



### Welcome

Congratulations on your selection for this wireless Bluetooth keyboard case. This ultra slim keyboard case is manufactured with the highest quality materials to compliment your Tablet PC. This is an ideal accessory for transportation, working, and much more!

### Overview

- |                    |              |             |
|--------------------|--------------|-------------|
| ☐ Main screen/Esc  | ⏪ Prev/Track | 📄 Copy      |
| ☼ Brightness -     | ⏩ Play/pause | 📄 Paste     |
| ☼ Brightness +     | ⏪ Next/Track | fn Function |
| 🖱 Virtual Keyboard | 🔇 Mute       | ⌘ Command   |
| 🔍 Search           | 🔇 Volume -   | 🔗 Pair      |
| 🔒 Lock screen      | 🔇 Volume +   | 💡 Backlight |

- fn+pgup: Page Up    fn+pgdn: Page Down  
fn+home: Home    fn+end: End

1. Low battery alarm.
2. 30 seconds without key press, the backlight will be off automatically.
3. 10 minutes without key press, the keyboard will sleep into power saving mode.
4. The backlight function will be off automatically when it is low battery.
5. Three levels backlight brightness: low-medium-high off.
6. Press (☼+☼) or (☼+☼) to adjust the color.
7. Seven colors backlight.  
(green-blue-white-yellow-purple-cyan blue-red)

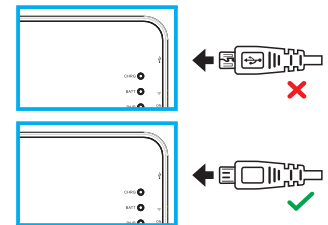
### Meaning to LED light colors

- Blue LED blinking: Pairing
- Red LED on: Charging
- Green LED on: Battery is fully charged
- Green LED blinking: Low in Battery

### Charging and pairing

- Step 1: Recharging the keyboard
1. The keyboard arrives partial charged  
Before first use, charge the keyboard fully.  
(Solid green LED)

2. To charge the keyboard:
  - a) Locate micro-USB cable from the package or use your own.
  - b) Plug in the micro-USB (small tip) into the keyboard and the other end into a USB port.  
(Recommend: 5V/1A input)



3. After the first full charge, it should take at least 2 hours to recharge fully from low power.

- Step 2: Pairing your Bluetooth Keyboard to the Tablet PC Bluetooth-Enabled Device
- Before you can use your keyboard with the Tablet PC, you must first pair the devices together via wireless Bluetooth. Fortunately, you only have to perform the pairing process once.

1. Enable Bluetooth in Tablet PC Settings.
2. Turn on the keyboard, press the "📶" button (Blue BT will begin flashing)
3. From Tablet PC Bluetooth settings, "Bluetooth keyboard" will appear. Tap "Bluetooth keyboard" on the Tablet PC
4. Your Tablet PC should show that it is paired if successful.



(1)

FCC Caution.

This device complies with part 15 of the FCC Rules. Operation is subject to the following two conditions:

- (1) This device may not cause harmful interference, and
- (2) this device must accept any interference received, including interference that may cause undesired operation.

Any Changes or modifications not expressly approved by the party responsible for compliance could void the user's authority to operate the equipment.

Note: This equipment has been tested and found to comply with the limits for a Class B digital device, pursuant to part 15 of the FCC Rules. These limits are designed to provide reasonable protection against harmful interference in a residential installation. This equipment generates uses and can radiate radio frequency energy and, if not installed and used in accordance with the instructions, may cause harmful interference to radio communications. However, there is no guarantee that interference will not occur in a particular installation. If this equipment does cause harmful interference to radio or television reception, which can be determined by turning the equipment off and on, the user is encouraged to try to correct the interference by one or more of the following measures:

- Reorient or relocate the receiving antenna.
- Increase the separation between the equipment and receiver.
- Connect the equipment into an outlet on a circuit different from that to which the receiver is connected.
- Consult the dealer or an experienced radio/TV technician for help.

The device has been evaluated to meet general RF exposure requirement. The device can be used in portable exposure condition without restriction.