

Portable Wireless Speaker

Model: KS-186 ISB408B

Important Safety Instructions

- Read these Instructions.
- Keep these Instructions.
- Heed all Warnings.
- Follow all instructions.
- Do not use this apparatus near water.
- Clean only with a dry cloth.
- Do not block any ventilation openings. Install in accordance with the manufacturer's instructions.
- Do not install near any heat sources such as radiators, heat registers, stoves, or other apparatus (including amplifiers) that produce heat.
- Do not defeat the safety purpose of the polarized or grounding-type plug. A polarized plug has two blades with one wider than the other. A grounding type plug has two blades and a third grounding prong. The wide blade or the third prong are provided for your safety. When the provided plug does not fit into your outlet, consult an electrician for replacement of the obsolete outlet.
- Protect the power cord from being walked on or pinched particularly at plugs, convenience receptacles, and the point where they exit from the apparatus.
- Only use attachments/accessories specified by the manufacturer.
- Unplug this apparatus during lightning storms or when unused for long periods of time.
- Refer all servicing to qualified service personnel. Servicing is required when the apparatus has been damaged in any way, such as power-supply cord or plug is damaged, liquid has been spilled or objects have fallen into the apparatus, the apparatus has been exposed to rain or moisture, does not operate normally, or has been dropped.
- Use only with a cart, stand, tripod, bracket, or table specified by the manufacturer, or sold with the apparatus. When a cart is used, use caution when moving the cart/apparatus combination to avoid injury from tip-over.



FCC Warnings

Warning: Changes or modifications to this unit not expressly approved by the party responsible for compliance could void the user's authority to operate the equipment.

NOTE: This equipment has been tested and found to comply with the limits for a Class B digital device, pursuant to Part 15 of the FCC Rules. These limits

are designed to provide reasonable protection against harmful interference in a residential installation. This equipment generates, uses, and can radiate radio frequency energy and, if not installed and used in accordance with the instructions, may cause harmful interference to radio communications. However, there is no guarantee that interference will not occur in a particular installation. If this equipment does cause harmful interference to radio or television reception, which can be determined by turning the equipment off and on, the user is encouraged to try to correct the interference by one or more of the following measures:

- Reorient or relocate the receiving antenna.
 - Increase the separation between the equipment and receiver.
 - Connect the equipment into an outlet on a circuit different from that to which the receiver is connected.
 - Consult the dealer or an experienced radio/TV technician for help.
- This device complies with Part 15 of the FCC rules. Operation is subjected to the following two conditions:

- (1) this device may not cause harmful interference, and
- (2) this device must accept any interference received, including interference that may cause undesired operation.

Additional Warnings and Precautions

- **CAUTION: TO PREVENT ELECTRIC SHOCK, MATCH WIDE BLADE OF PLUG TO WIDE SLOT, FULLY INSERT.**
- Mains plug is used as disconnect device and it should remain readily operable during intended use. In order to disconnect the apparatus from the mains completely, the mains plug should be disconnected from the mains socket outlet completely.
- **WARNING: Shock hazard - Do Not Open.**
- **CAUTION: Use of controls or adjustments or performance of procedures other than those specified may result in hazardous radiation exposure.**
- **WARNING: Changes or modifications to this unit not expressly approved by the party responsible for compliance could void the user's authority to operate the equipment.**
- **WARNING: Do not place this unit directly onto furniture surfaces with any type of soft, porous, or sensitive finish. As with any rubber compound made with oils, the feet could cause marks or staining where the feet reside. We recommend using a protective barrier such as a cloth or a piece of glass between the unit and the surface to reduce the risk of damage and/or staining.**
- **WARNING: Do not ingest battery, chemical burn hazard.**

- Battery shall not be exposed to excessive heat such as sunshine, fire or the like.
- Lithium batteries, like all rechargeable batteries, are recyclable and should be recycled or disposed of according to state and local guidelines. They should never be disposed of in normal household waste and they should never be incinerated, as they might explode. Contact your local government for disposal or recycling practices in your area.



WARNING: To reduce the risk of electric shock, do not remove cover (or back). No user-serviceable parts inside. Refer servicing to qualified service personnel.



The exclamation point within an equilateral triangle is intended to alert the user to the presence of important operating and maintenance (servicing) instructions in the literature accompanying the appliance.



The lightning flash with arrowhead symbol, within an equilateral triangle, is intended to alert the user to the presence of un-insulated "dangerous voltage" within the product's enclosure that may be of sufficient magnitude to constitute a risk of electric shock to persons.



This symbol indicates that this product incorporates double insulation between hazardous mains voltage and user accessible parts.



WARNING: This product can expose you to chemicals including lead, which is known to the State of California to cause cancer. For more information go to: www.P65Warnings.ca.gov This product meets and complies with all Federal regulations.

Overview

Features

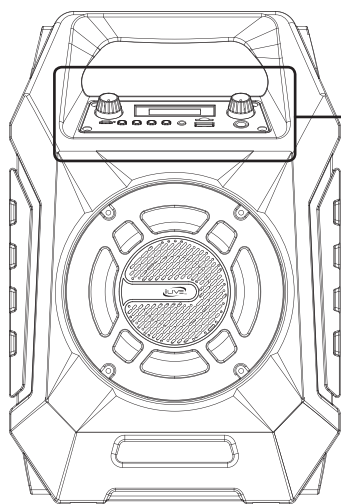
- Bluetooth wireless - range 60 ft.
- Single 5.25" speaker
- Built-in speaker and amplifier
- LED light effects
- Digital FM radio - up to 30 memory presets
- Microphone input
- 3.5mm Aux In
- USB port - supports MP3 file format
- SD memory card port - supports MP3 file format
- DC power: Micro-USB to USB cable (included)
- Built-in rechargeable battery
- Battery life: approx. 3 hrs playtime

Includes

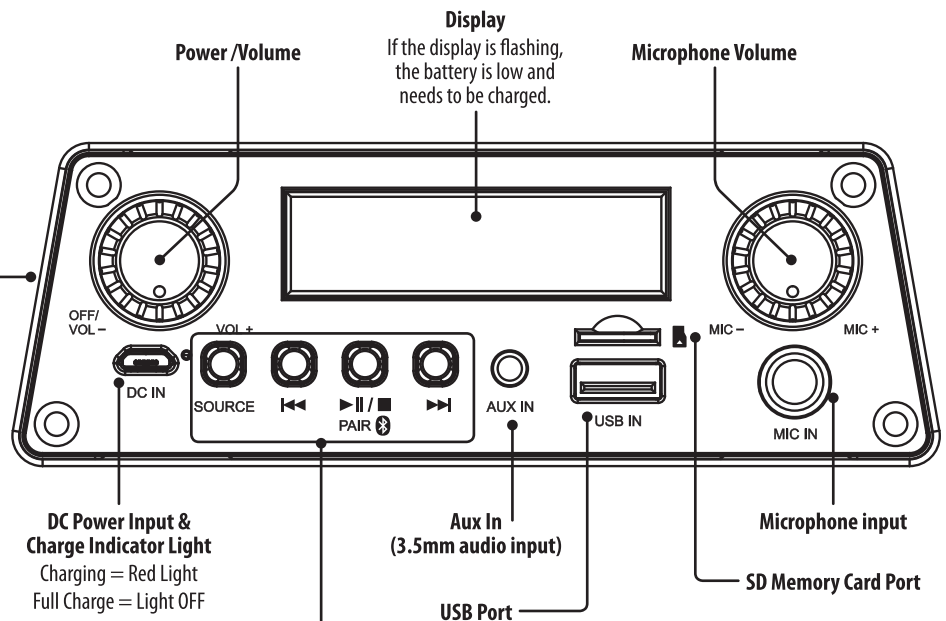
- 3.5mm audio cable
- Micro-USB to USB power cable
- User's Guide

Light Effects

The lights on the speakers will flash randomly while music is playing.



Front View



Controls

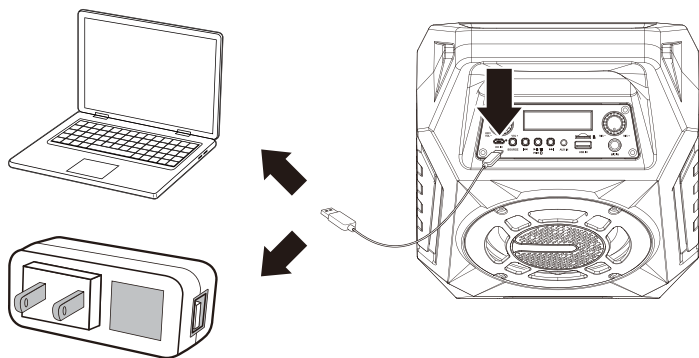
Source Press to change audio source.	Play / Pause / Stop / Pair Press once to play/pause audio (BLUETOOTH/CARD/USB). Press and hold to stop audio (CARD/USB). Press and hold to begin pairing (BLUETOOTH MODE).
Skip Rev/Fwd Press to skip audio track.	

See back for FM radio controls.

Charging the Battery

Requires a Micro-USB to USB cable (included). Charge fully before use.

1. When the speaker's battery is low, the display will begin flashing. Using a **Micro-USB to USB** cable (included), connect the **DC Power Input** on the speaker to the USB port of a powered on computer or USB power adapter (not included).



Bluetooth Wireless

Pairing & Playing Audio

After initial pairing, the unit will stay paired unless unpaired manually by the user or erased due to a reset of the device. If your device should become unpaired or you find it is unable to connect, repeat the steps listed here.

1. Press the **Source** button to select **Bluetooth Mode**. The **pairing indicator** ("bt" on the display) will begin slowly flashing.
2. Press and hold **PAIR** to begin pairing. The **pairing indicator** ("bt" on the display) will begin quickly flashing. *Remain within 3 feet of the unit.*
3. Using the controls on your Bluetooth device, scan for and select **ISB408** in your Bluetooth settings to pair. If your device requests a password, enter the default password **0000**. *Refer to the user's manual for your specific device for instructions on pairing and connecting Bluetooth devices.*
4. When successfully paired, the **pairing indicator** ("bt" on the display) will turn solid and an audible chime will sound from the unit.
5. Use the controls on the connected device to select and begin playing audio. Audio played through the connected Bluetooth device will now be heard through the speaker. Use the controls on the speaker or the connected device to play, pause, and adjust volume.

FM Radio

Radio Reception

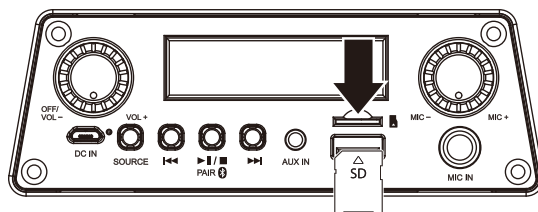
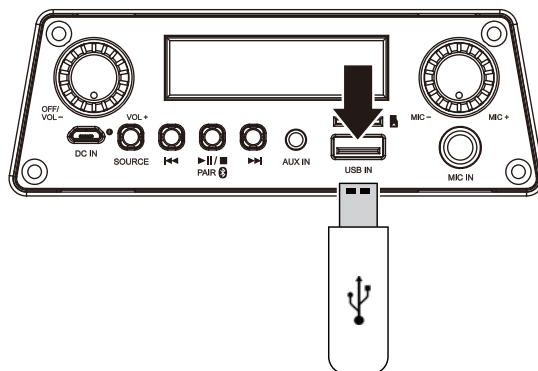
An FM receiver is built into the speaker. Adjust the position of the unit to improve FM radio reception.

Radio Tuning and Saving Station Presets

- Press the **Source** button to switch to **FM Radio Mode**. *The display will show the station frequency, Ex: 101.1.*
- Press and hold **PAIR** to scan and save radio stations automatically. Radio stations will be assigned a "Pxx" number automatically.
- Press **PAIR** to go to P01 and cycle through saved stations.
- Press and hold **PAIR** to tune the frequency manually.

SD Memory Cards & USB Drives

1. Load a SD memory card or USB drive into the appropriate port.
2. The speaker will automatically switch to **USB Mode** ("USB" on the display) or **SD Card Mode** ("CARD" on the display).
3. Use the controls on the speaker to select and play audio from the connected drive.



Aux In

Requires a 3.5mm audio cable (not included).

1. Connect a 3.5mm audio cable to the **Aux In** on the unit and the **audio output/headphone jack** on an audio device.
2. The speaker will automatically switch to **Line In Mode** ("LINE" on the display).
3. Use the controls on the connected device to select and play audio.

