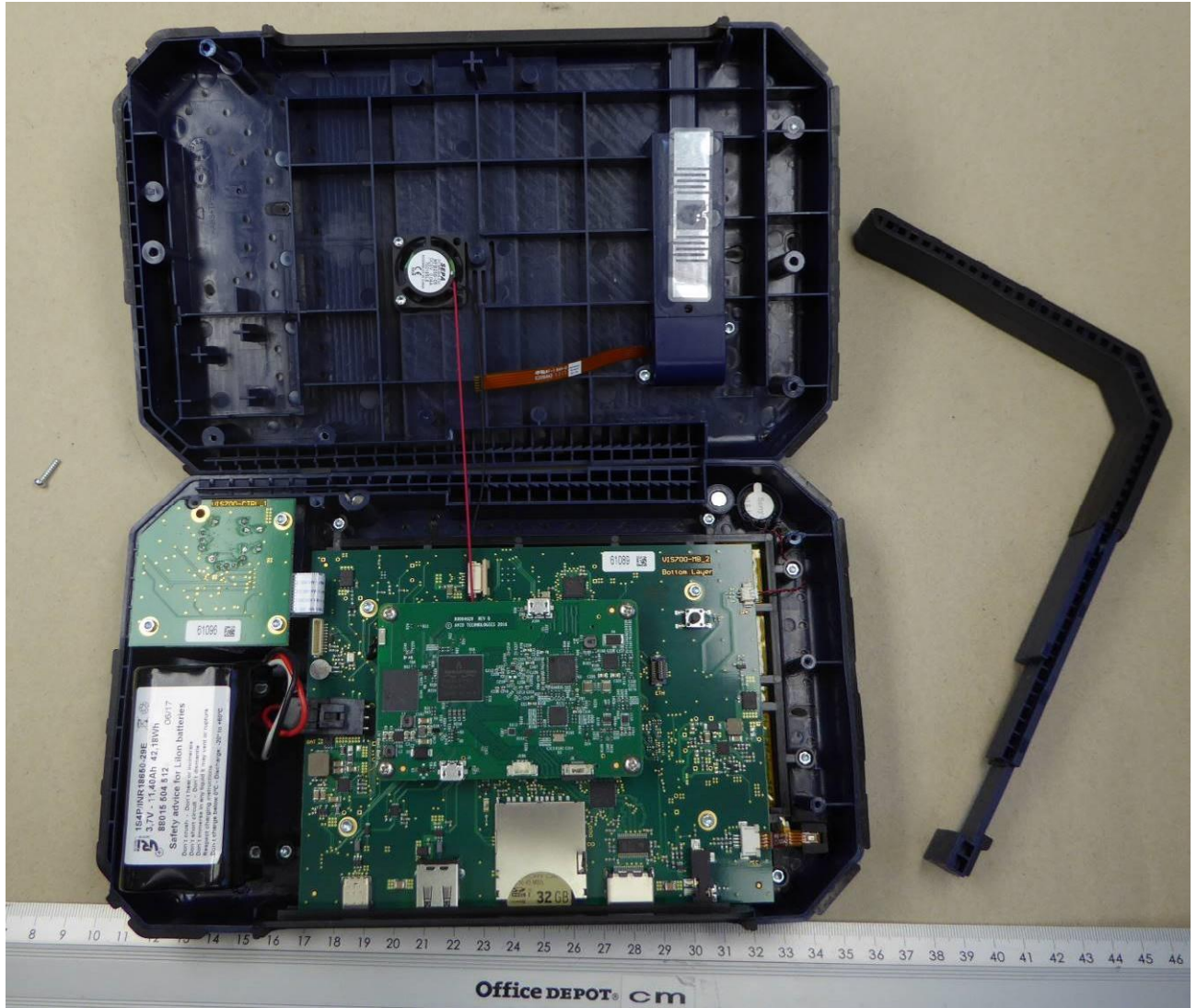
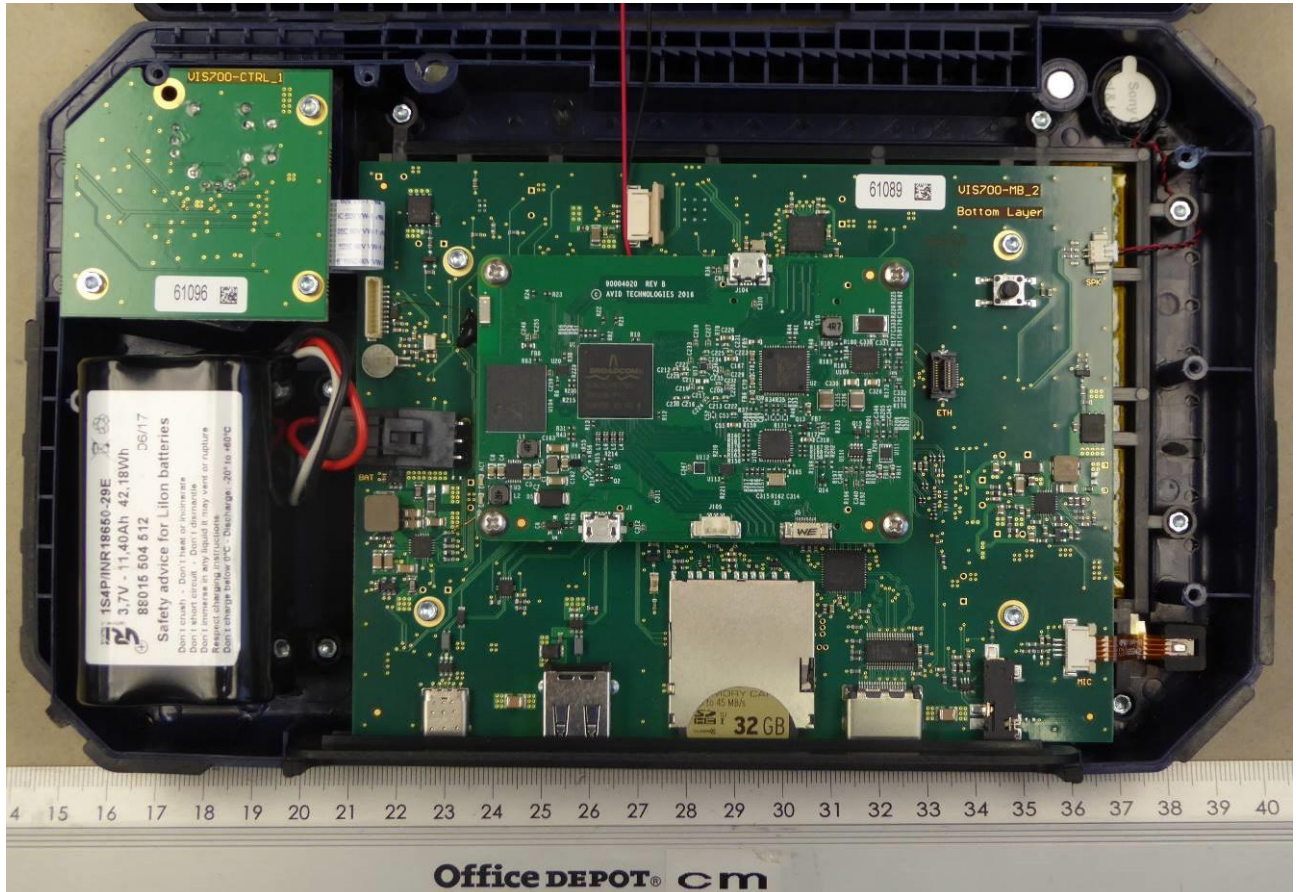


ANNEX C: INTERNAL PHOTOGRAPHS



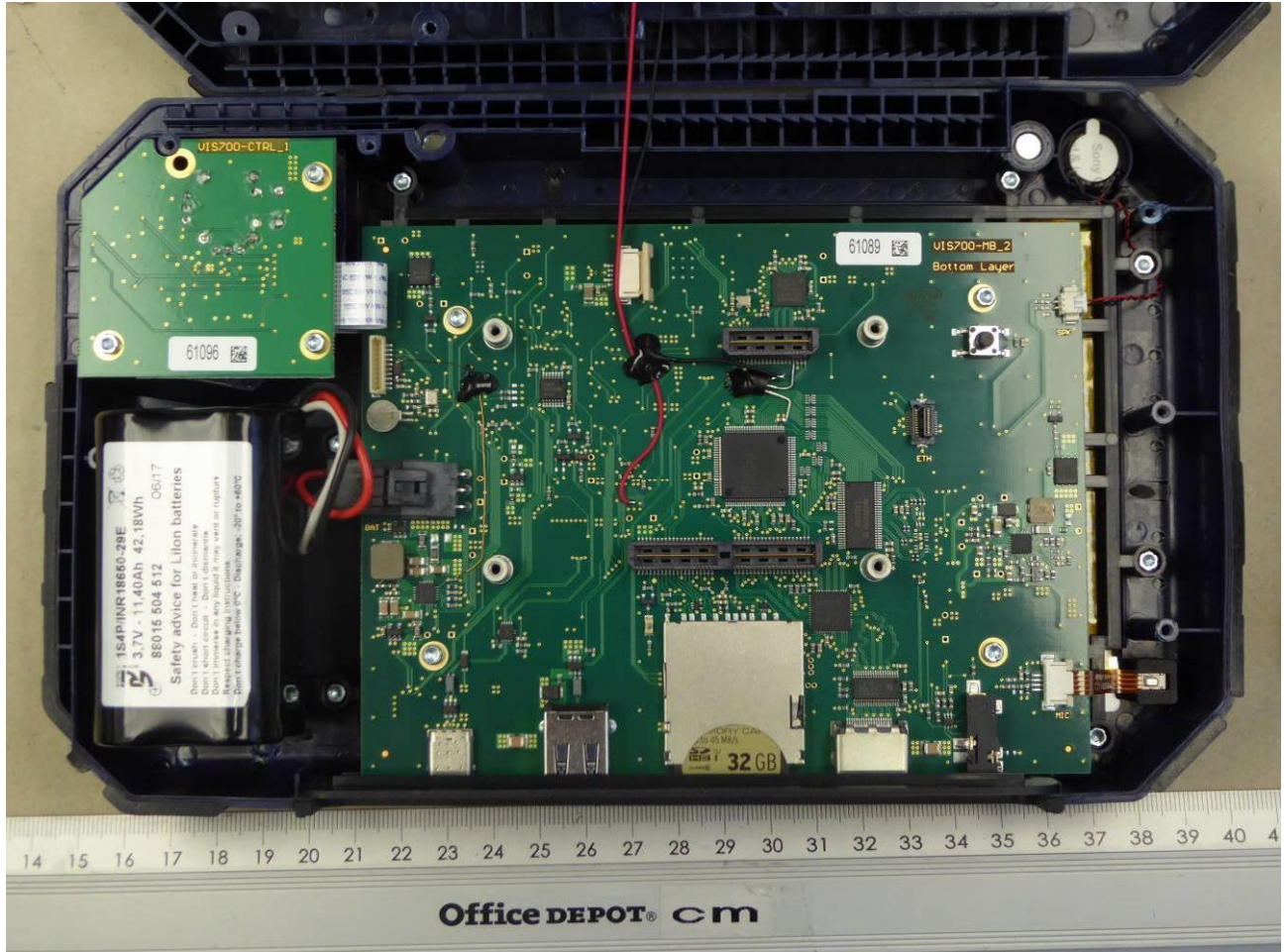
180488_radio_14.jpg: EUT – inside view 1

ANNEX C: INTERNAL PHOTOGRAPHS



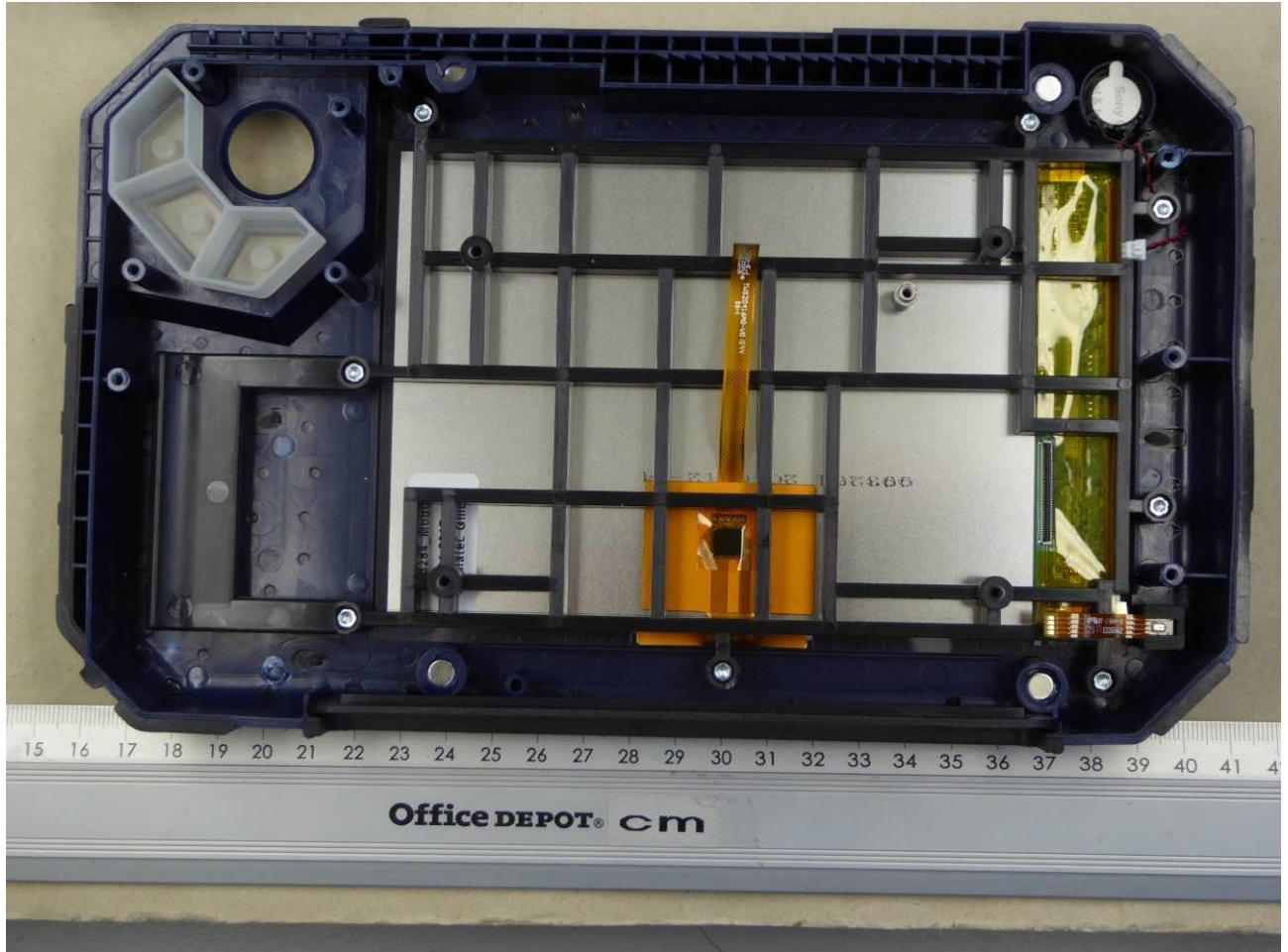
180488_radio_15.jpg: EUT – inside view with radio PCB

ANNEX C: INTERNAL PHOTOGRAPHS



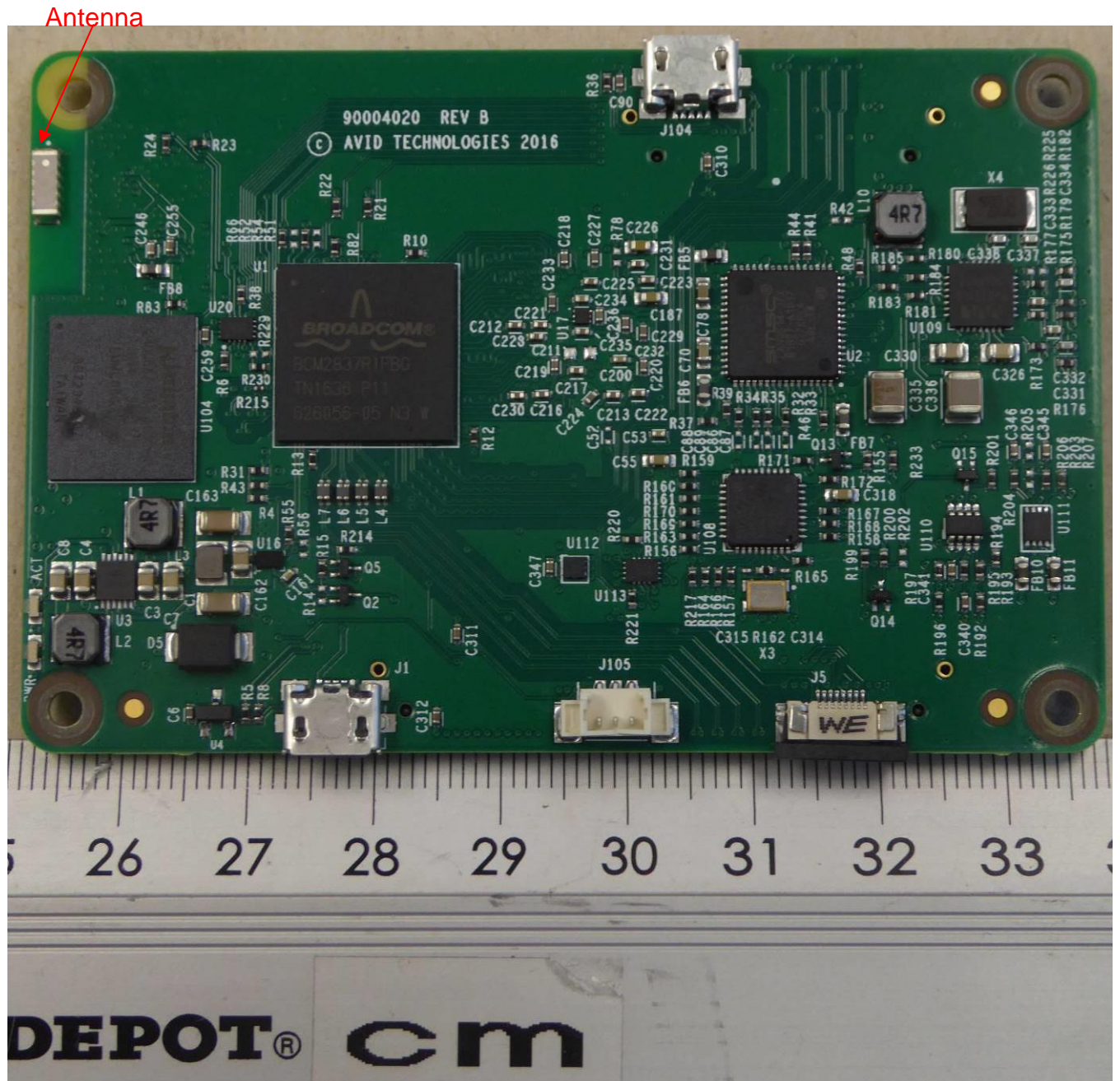
180488_radio_16.jpg: EUT – inside view without radio PCB

ANNEX C: INTERNAL PHOTOGRAPHS



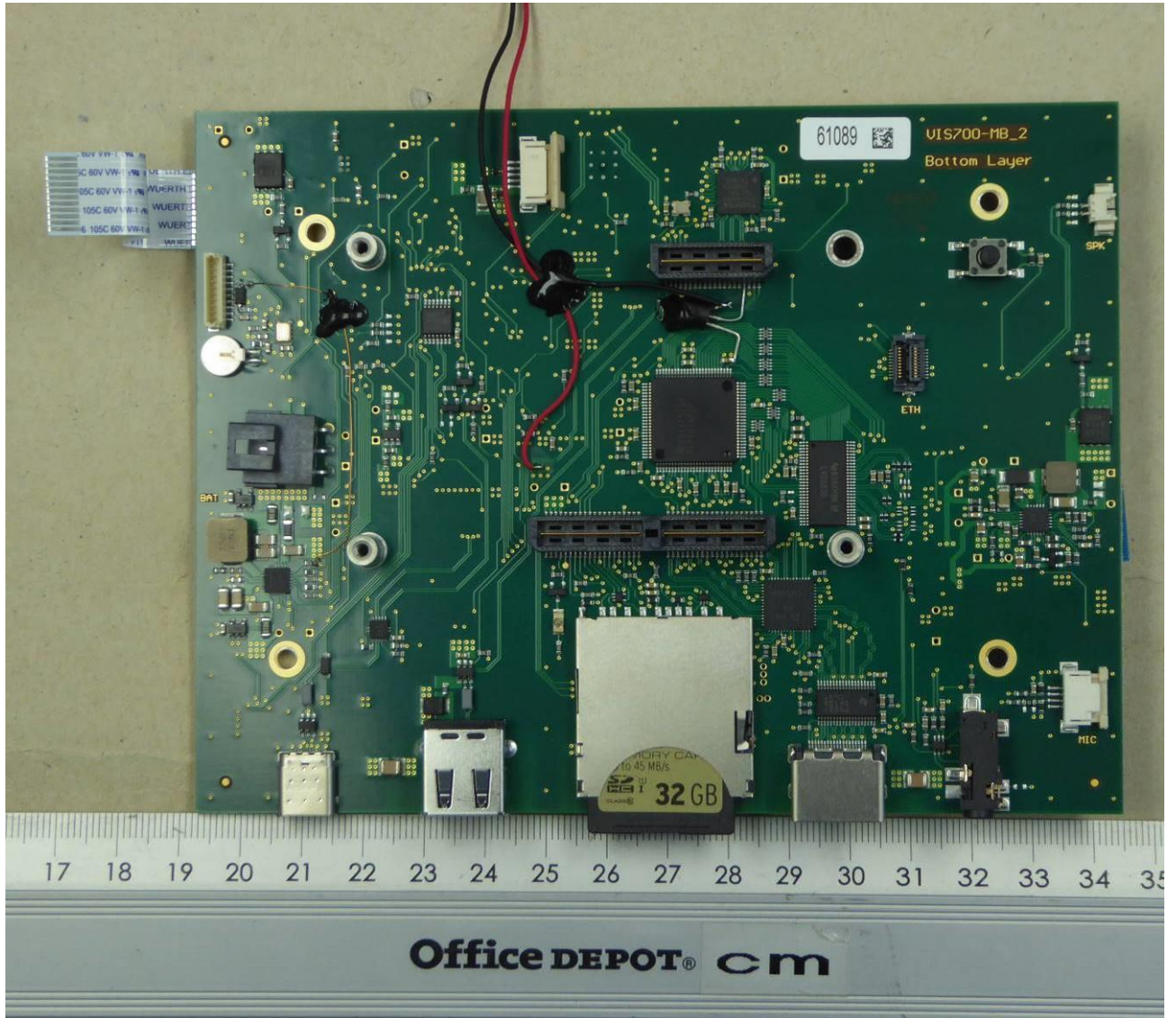
180488_radio_17.jpg: EUT – inside view all PCBs removed

ANNEX C: INTERNAL PHOTOGRAPHS



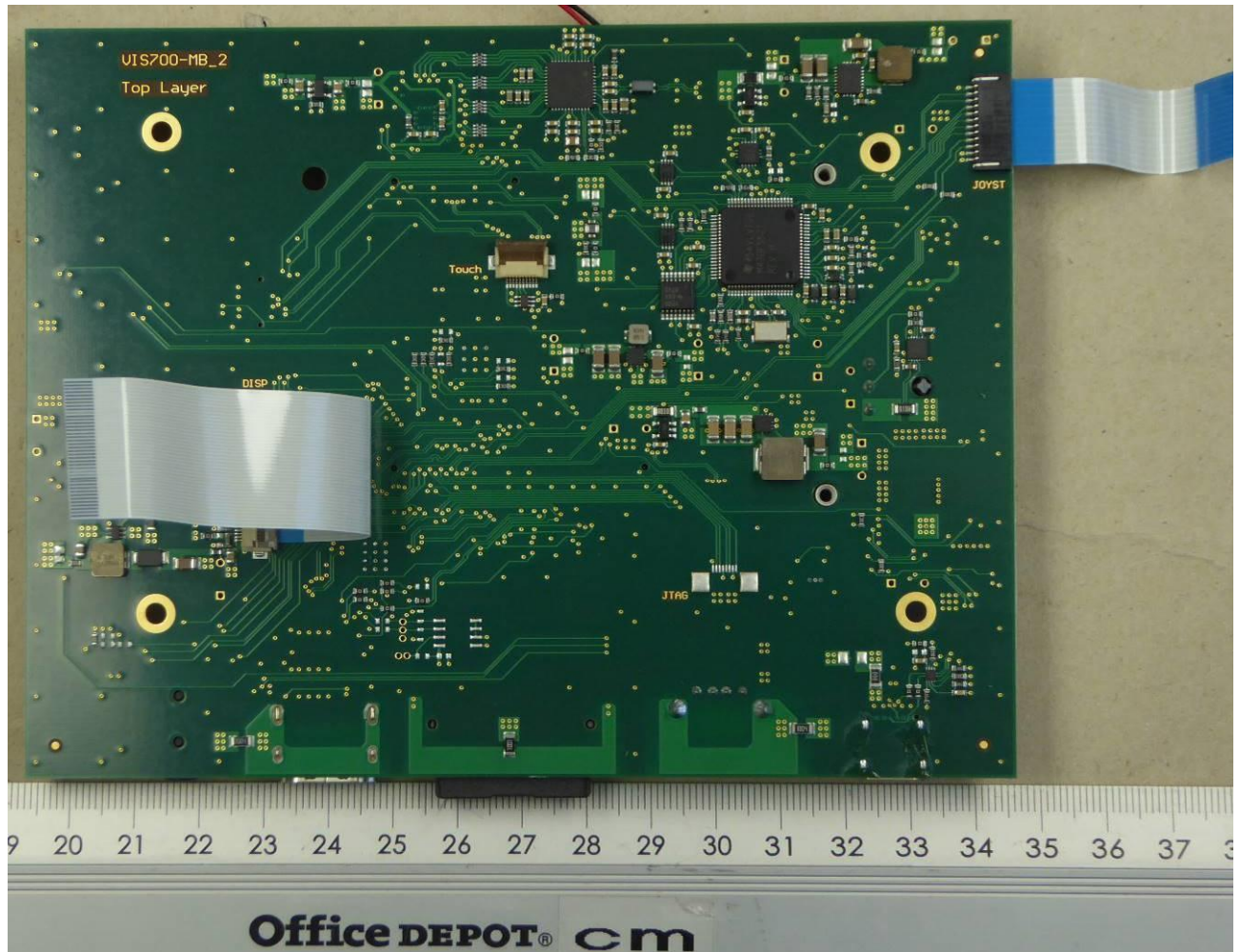
180488_radio_18.jpg: Radio PCB top view

ANNEX C: INTERNAL PHOTOGRAPHS



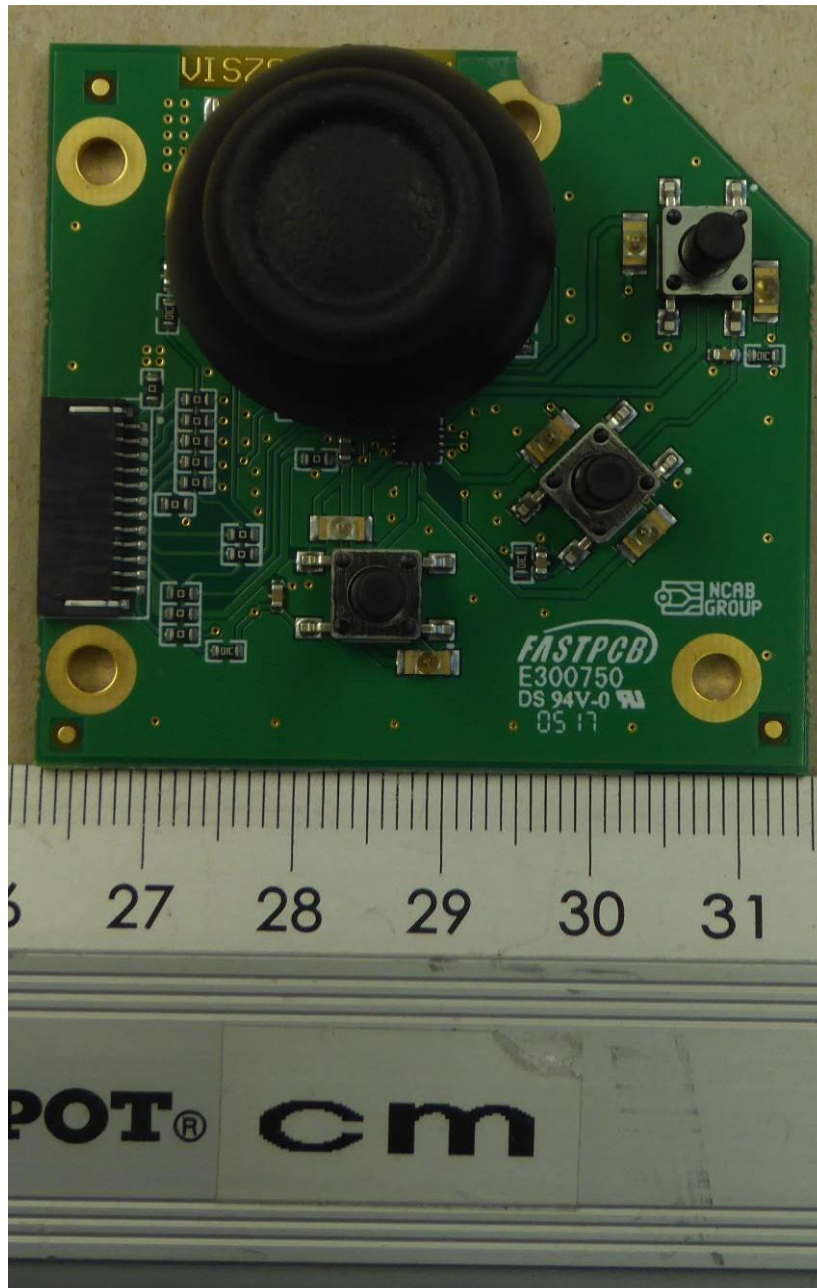
180488_radio_20.jpg: Main PCB – top view

ANNEX C: INTERNAL PHOTOGRAPHS



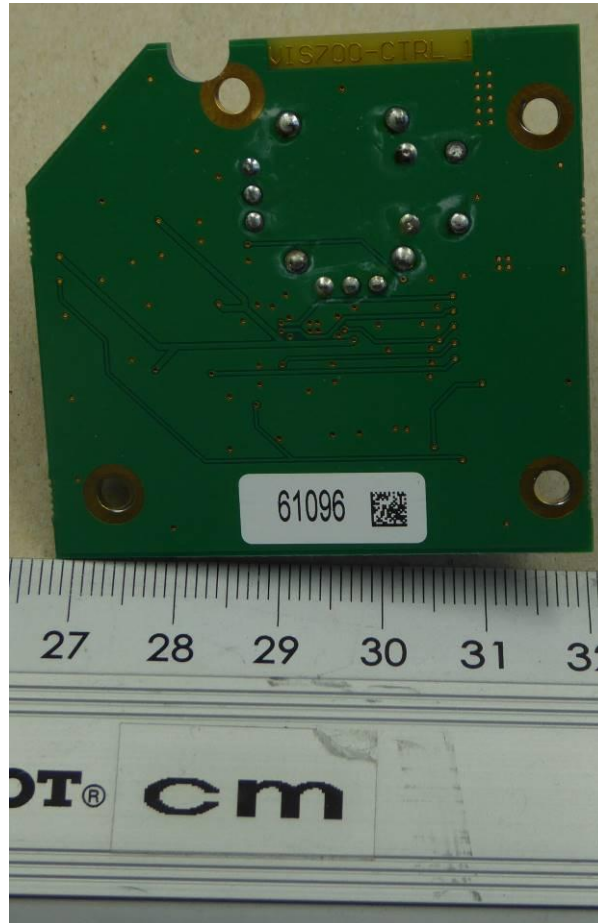
180488_radio_21.jpg: Main PCB – bottom view

ANNEX C: INTERNAL PHOTOGRAPHS



180488_radio_22.jpg: "Joystick" PCB top view

ANNEX C: INTERNAL PHOTOGRAPHS



180488_radio_23.jpg: "Joystick" PCB bottom view