

CAMERA AUTO-ACTIVATION SYSTEM

User Guide

7280CAS | 7360CAS

Safariland® and VIEVU® have developed proprietary Camera Auto-activation System technology to automatically activate a VIEVU LE4 camera any time a firearm is drawn from a connected Safariland 7TS™ holster.



SAFARILAND®
VIEVU®

Together, We Save Lives.™

SYSTEM INCLUDES:

- A. Safariland® Duty Retention Holster
 - 7360 7TS™ SLS Mid-Ride Level II Retention™ Holster
 - or-
 - 7360 7TS™ ALS®/SLS Hi- Ride Level III Retention™ Holster
- B. VIEVU® LE4 Camera
- C. USB Cradle and Cable
- D. Holster Cable
- E. Battery Tube
- F. Camera Clip Locking Spacer
- G. 1 CR123A Battery (not shown)



CAMERA CLIP INSTALLATION:

1. Remove metal clip from the back of the VIEVU LE4 camera with a #1 Phillips Screwdriver (Fig 1).
2. Locate the camera locking spacer kit supplied with your holster (Fig 2).
3. Place the camera locking spacer into the square recess in the back of the camera housing with the smooth side facing up (Fig 3).
4. Place the spring clip supplied with the LE4 camera onto the camera locking spacer (Fig 4). Choose vertical or horizontal mount (Fig 5) placement.
5. Install the supplied screw, securing the spring clip, locking spacer and LE4 camera together (Fig 6). The clip is functional (Fig 7).

CONNECT HOLSTER TO CAMERA:

6. Completely remove the rubber USB cover from bottom of camera.
7. Extend USB holster's USB cable and insert into port in bottom of camera (Fig 6).
8. Gently slide the LE4 camera into USB cradle. Snap into place (Fig 7).



WARNING:

Camera must first be connected to USB cable (Fig 2) before camera is seated in cradle (Fig 3) or damage to USB port may occur.

Connect USB cable to holster cable by twisting connector on male holster cable with connector on female cable (Fig 8) until arrows are aligned in locked position (Fig 9).

1. To avoid battery usage during storage and shipping, make sure the cap on the bottom of the battery tube is not on tight. Twist to tighten (Fig 10).
2. When battery tube is properly activated, four lights blink; one (1) red and three (3) blue (Fig 11).

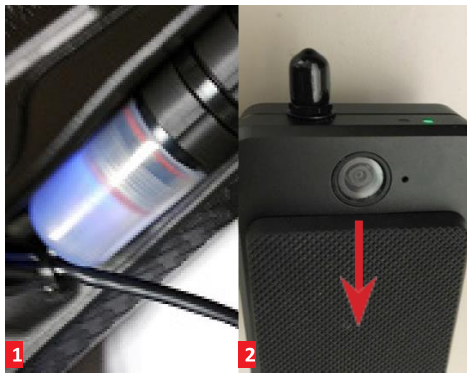


CAMERA ACTIVATION OPERATION

RECORDING VIDEO – PRERECORD BUFFER:

The LE4 camera includes the ability to buffer video and add it to the video file when the record switch activated. This will allow you to capture video for 30 seconds prior to when the record switch is activated. The prerecord buffer can be deactivated in the VIEVU Solution or VERIPATROL™ software.

1. Press and hold ON/OFF button on side of camera for 3 seconds (Fig 1). LED light (Fig 2) blinks blue when turning on.
2. LED light turns solid red or blinks red when enabling the prerecord.



TO START RECORDING:

1. Obtain your normal shooting grip on holster and draw the weapon. The LED light in the battery tube blinks blue (Fig 1).
2. The LED status light on the camera blinks green, indicating the camera is recording (Fig 2).

NOTE: To manually activate the camera, slide record switch down (Fig 2).

TO STOP RECORDING

1. Move slide switch down and wait 3 seconds (Fig 1).
2. Slide record switch up (Fig 2).
3. LED light turns back red (Fig 3).

NOTE: Wait 3 to 4 seconds before drawing the weapon



TO REPLACE BATTERIES:

1. Unscrew battery cap located at the base of holster (Fig 1).
2. Insert (1) CR123A battery with positive (+) side first (Fig 2).
3. Replace battery cap and twist to tighten (Fig 2).
4. When battery tube is properly activated, the lights will flash (1) red and (2) blue. This signal indicates the CAS3 holster is ready to be paired to a Motorola APX6000 or APX8000 radio.

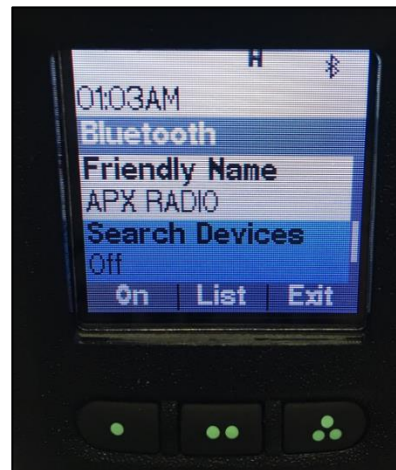
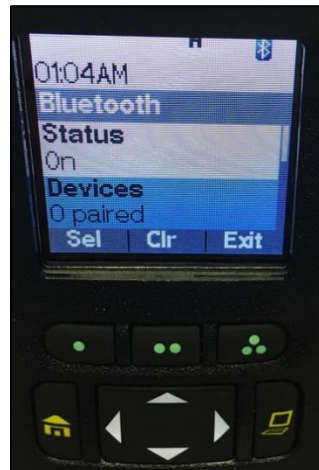
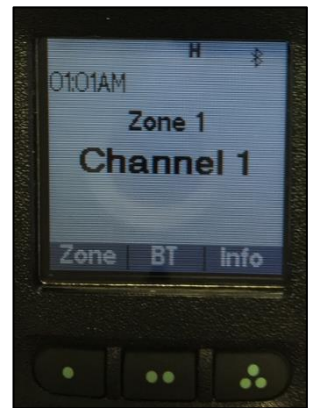
*Battery life approx. 30 days.

Note: Battery is running low and needs to be replaced when steady red LED light appears in battery tube.

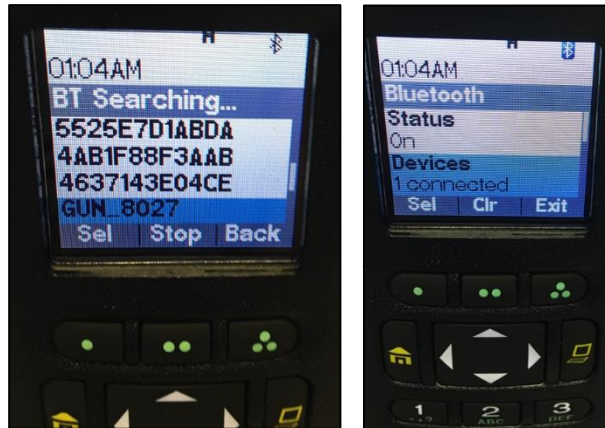


CONNECTING TO CAS3 HOLSTERS TO THE MOTOROLA APX6000 OR APX8000 RADIOS:

- A. Upon powering up the Motorola APX6000 or APX8000 radios the device will boot finishing on the following screen. The first step is to pair the CAS3 holster with the Bluetooth™ radio in the APX radio. Press the center button with the two green dots to begin this step.
- B. After pressing, the screen will change to the following screen. Note no device is paired. Using the downward arrow scroll down to the menu item **Search Devices**. By pressing the button with the single green dot the APX radio will begin searching for all Bluetooth™ devices.



- C. Using the up and down arrows scroll through the list of Bluetooth™ devices until GUN_XXXX is found. XXXX is a unique four digit code for your CAS3 holster. Once highlighted press the button with the single green dot selecting it to be paired. Once paired the APX radio screen will change to show one device connected. By pressing the single green dot button once again you can confirm your holster is connected.



- D. Using the up and down arrows scroll through the list of Bluetooth™ devices until GUN_XXXX is found. XXXX is a unique four digit code for your CAS3 holster. Once highlighted press the button with the single green dot selecting it to be paired. Once paired the APX radio screen will change to show one device connected. By pressing the single green dot button once again you can confirm your holster is connected.



CAMERA LED LIGHT STATUS:



- **Fast Blink Blue:** Camera is turning **ON**.
- **Solid Red:** Camera is **ON**. Prerecord buffer is **OFF**.
- **Slow Blink Red:** Camera is **ON**. Prerecord buffer is **ON**. Camera is recording video to the prerecord buffer.
- **Slow Blink Green:** Camera is recording video & audio.
- **Fast Blink Yellow:** Camera is low on battery or memory is almost full. Camera is recording video & audio.
- **Solid Yellow:** Camera is not recording. Battery is depleted or memory is full.
- **Slow Blink White:** Camera installing firmware
- **Solid Blue:** Camera connected to Multi-Dock & in queue to download
- **Slow Blink Blue:** Camera downloading video to Multi-Dock.

CHARGING LIGHT:

- **Solid Green & Blink Red:** Connected to USB & battery charging
- **Solid Green:** Battery fully charged
- **Solid Green & Solid Red:** Connected to USB & fully charged.



WARNINGS:

- System is water-resistant, but system **MUST NOT** be submerged in water.
 - Do not force camera into USB cradle – gently snap into place.
 - Camera must be charged before the start of every shift.
 - Prior to shift – make certain all equipment is securely in position and functioning.
 - When camera is being updated in dock, **DO NOT** turn the camera **OFF** or disconnect it from power or the dock. Firmware update may fail and cause camera to become un-responsive.
- *Potential camera failure if user disconnects from the power source while firmware is updating.

Warnings about Radio Waves

Safariland® Holsters with CAS™ Technology contain a radio transceivers (a transmitter and a receiver per unit) which transmits in the 2402MHz to 2480MHz frequency range. Safariland® LCC designed and manufactured the CAS™ Technology to not to exceed the emission limits for exposure to Radio Frequency (RF) energy set forth by law according to the Federal Communications Commission (FCC) from the government of United States of America.

The Radio Frequency energy limits from the FCC are part of comprehensive guidelines and established permitted levels of RF energy for the general population. The guidelines are based on standards that were developed by independent organizations through periodic and thorough scientific studies. The standards encompass and include safety margins which are designed to assure the safety of all people, regardless of age and health when properly operating the equipment. As with any RF transmitter and/or receiver, before a device is available for sale to the public, it must be tested and certified to the FCC that the device does not exceed the limits established by the government-adopted requirements for safe exposures.

Any changes or modifications not expressly approved by Safariland® LCC will void the product warranty and will immediately void the user's authority to operate the equipment.

This equipment has been tested and found to comply with the limits for a Class B digital device, pursuant to part 15 of the FCC Rules. These limits are designed to provide reasonable protection against harmful interference in a residential installation. This equipment generates, uses and can radiate radio frequency energy and, if not installed and used in accordance with the instructions, may cause harmful interference to radio communications. However, there is no guarantee that interference will not occur in a particular installation. If this equipment does cause harmful interference to radio or television reception, which can be determined by turning the equipment off and on, the user is encouraged to try to correct the interference by one or more of the following measures:

- Reorient or relocate the receiving antenna.
- Increase the separation between the equipment and receiver.
- Connect the equipment into an outlet on a circuit different from that to which the receiver is connected.
- Consult the dealer or an experienced radio/TV technician for help.

For more information or help please contact Safariland® Customer service through either +1(800)347-1200 or our website www.safariland.com.

**THE SAFARILAND
GROUP**

3120 E. Mission Blvd., Ontario, CA 91761
Customer Care: 800-347-1200 (USA Only) or 909-923-7300
©Safariland, LLC 2017