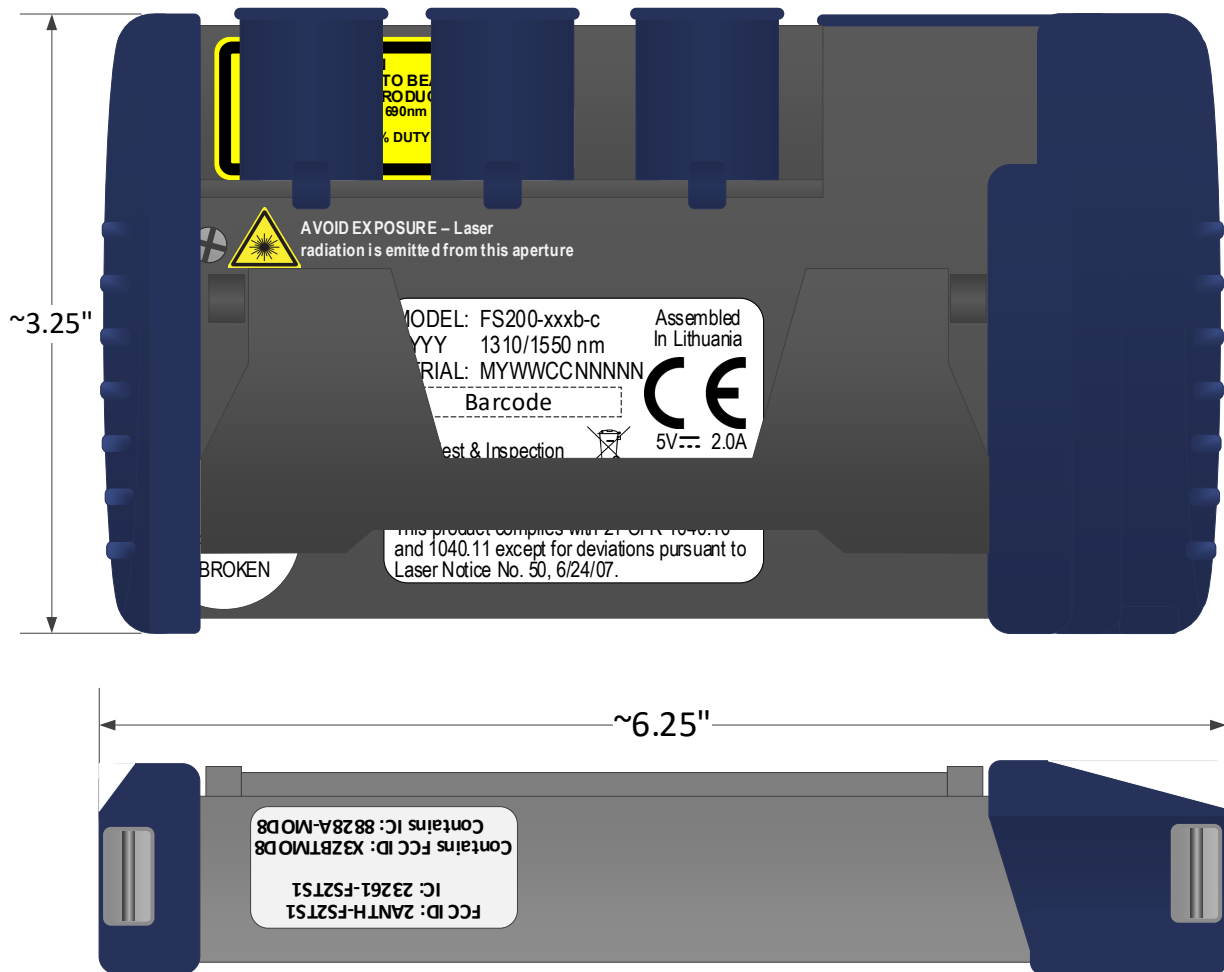


1AFL FlexScan FS200 & TS100 Product Labels and Locations
04/04/2022



The above is an example drawing of FlexScan FS200. The TS100 is identical to the FS200 except for the boots on the end of case.

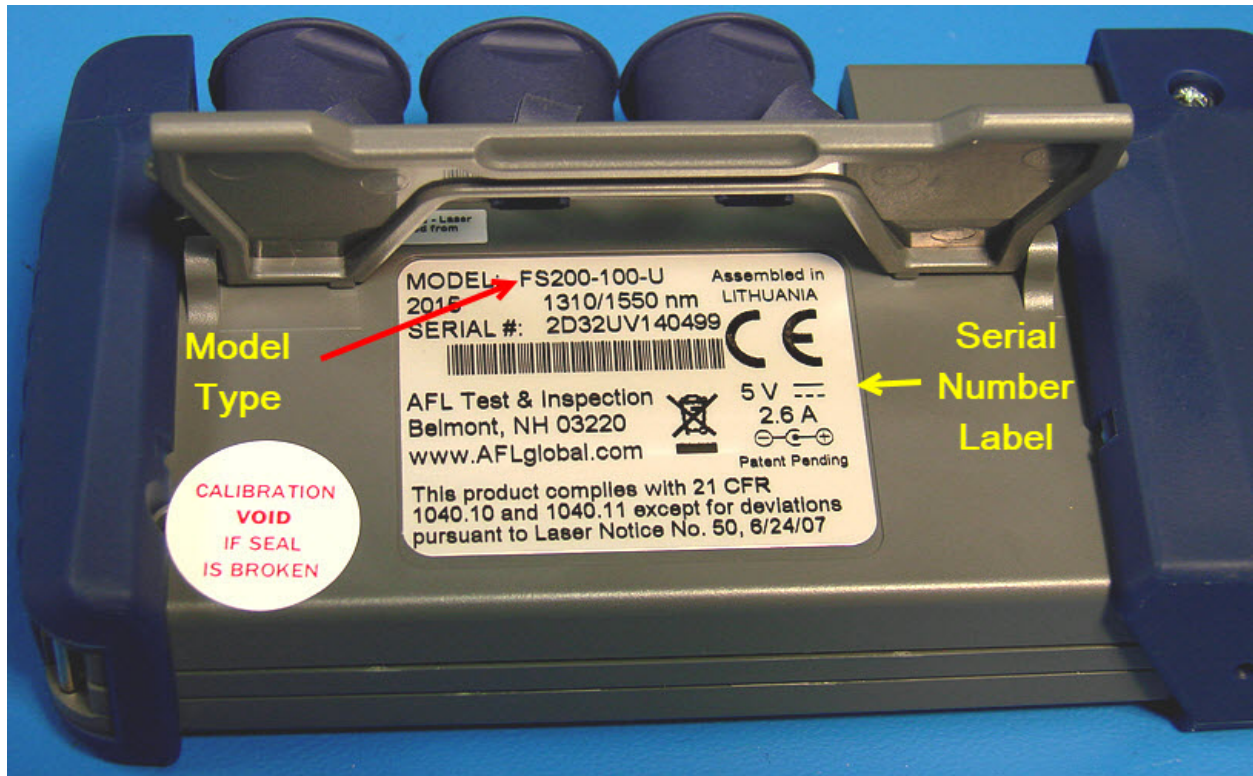


The above is an example drawing of FlexScan FS200. The TS100 is identical to the FS200 except for the boots on the end of case.

Actual product labels:

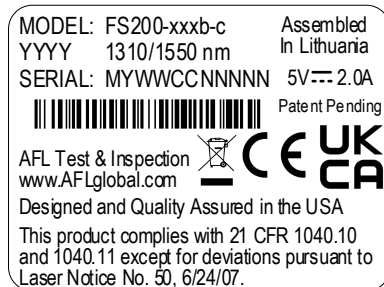
FS200	TS100
FCC ID: 2ANTH-FS2TS1	FCC ID: 2ANTH-FS2TS1
IC: 23261-FS2TS1	IC: 23261-FS2TS1
Contains FCC ID: X3ZBTMOD8	Contains FCC ID: X3ZBTMOD8
Contains IC: 8828A-MOD8	Contains IC: 8828A-MOD8

Standard FCC ID/IC label for FS200 & TS100

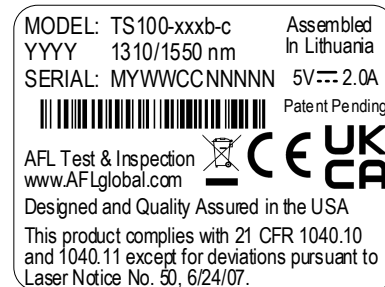


The above shows the location of the serial number/model type/CE/FDA certification label. This is the same location on both the FS200 and TS100.

The labels shown below are for the individual FS200 and TS100 models. Some of the FS200 labels show older models that are still in service, have the Bluetooth module and CC3200-based WiFi transceiver, though the installed firmware does not support the WiFi function. Enabling WiFi would require a firmware update.



FS200 Serial Number Label



TS100 Serial Number Label

FS200 Serial Number Label Key	TS100 Serial Number Label Key
YYYY: Year of manufacture (e.g. '2017')	YYYY: Year of manufacture (e.g. '2020')
Configuration: Wavelengths:	Configuration: Wavelengths:
FS200-50 1550 nm	TS100-60 1550 nm
FS200-60 1650 nm	TS100-70 1650 nm
FS200-100 1310/1550 nm	TS100-100 1310/1550 nm
FS200-300 1310/1550 nm	b = hardware version:
FS200-303 1310/1550/1625 nm	absent = original hardware
FS200-304 1310/1550/1650 nm	B = Updated P2 filter
b = hardware version:	c = 'U' (UPC OTDR/OLS connector)
absent = original hardware	c = 'A' (APC OTDR/OLS connector)
'B' = Mar-2017 PCB	Serial Number: MYWWCCNNNNN where:
'C' = Jun-2019 PCB w/ improved APD protection	M = Multiplier (2)
c = 'U' (UPC OTDR/OLS connector)	Y = year character (A=2012, B=2013, etc.)
c = 'A' (APC OTDR/OLS connector)	WW = Week no.
Serial Number: MYWWCCNNNNN where:	CC = Product code
M = Multiplier (2)	NNNNN = accumulating consecutive #
Y = year character (A=2012, B=2013, etc.)	
WW = Week no.	
CC = Product code	
NNNNN = sequential quantity	