

# W4 Wireless Security Camera System Quick Start Guide

Thanks for your purchase at ZOSI.

This quick start guide will guide you through the initial installation and related settings. In addition to following this guide, please visit (<https://zositech.com/>) for more installation videos, tips and detailed information.

If you have any problems about our products, please visit our online support center (<support.zositech.com>) or contact us before returning.

Production designation: Wireless IP Camera  
Model: ZG1883M  
Manufacture Name: Ansjer Electronics Co.,Ltd

ZOSI Technology Co., Ltd.  
3/F, Taitan Industrial Park,  
Xiangzhou District, Zhuhai, Guangdong 519000, China

NOTE: This equipment has been tested and found to comply with the limits for a Class B digital device, pursuant to part 15 of the FCC Rules. These limits are designed to provide reasonable protection against harmful interference in a residential installation. This equipment generates uses and can radiate radio frequency energy and, if not installed and used in accordance with the instructions, may cause harmful interference to radio communications.

However, there is no guarantee that interference will not occur in a particular installation. If this equipment does cause harmful interference to radio or television reception, which can be determined by turning the equipment off and on, the user is encouraged to try to correct the interference by one or more of the following measures:

- Reorient or relocate the receiving antenna.
- Increase the separation between the equipment and receiver.
- Connect the equipment into an outlet on a circuit different from that to which the receiver is connected.
- Consult the dealer or an experienced radio/TV technician for help

Changes or modifications not expressly approved by the party responsible for compliance could void the user's authority to operate the equipment.

This device complies with Part 15 of the FCC Rules. Operation is subject to the following two conditions:

(1) this device may not cause harmful interference, and (2) this device must accept any interference received, including interference that may cause undesired operation.

RF Exposure Warning Statements:

This equipment complies with FCC radiation exposure limits set forth for an uncontrolled environment. This equipment shall be installed and operated with minimum distance 20cm between the radiator & body.

# Contents

What's in the Box .....	02
Gallery & Specs .....	03
How the System Works .....	04
How to Connect the System .....	04
Camera Installation Steps .....	05
Installation Tips .....	06
Hard Drive Installation .....	06
Remote View Settings (App) .....	07
Remote View Settings (AVSS Client) .....	10
New Camera Pairing .....	15
Warranty and Customer Service .....	16

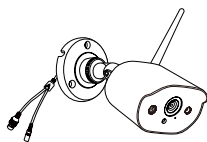
This device contains licence-exempt transmitter(s)/receiver(s) that comply with Innovation, Science and Economic Development Canada's licence-exempt RSS(s). Operation is subject to the following two conditions:

- (1) This device may not cause interference.
- (2) This device must accept any interference, including interference that may cause undesired operation of the device.

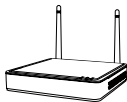
L'émetteur/récepteur exempt de licence contenu dans le présent appareil est conforme aux CNR d'Innovation, Sciences et Développement économique Canada applicables aux appareils radio exempts de licence. L'exploitation est autorisée aux deux conditions suivantes :

- (1) L' appareil ne doit pas produire de brouillage;
- (2) L' appareil doit accepter tout brouillage radioélectrique subi, même si le brouillage est susceptible d' en compromettre le fonctionnement.

## 01 What's in the Box



4\*Camera



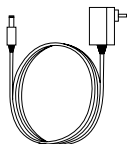
1\*NVR



4\*Mounting  
Template



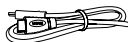
4\*Warning  
Sticker



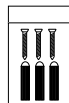
1\*12V/2A NVR  
Power Adapter  
4\*12V/1A Camera  
Power Adapter



1\*1m Ethernet Cable



1\*HDMI Cable



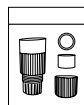
4\*Mounting  
Screw Bag



1\*Quick Start  
Guide



1\*Mouse



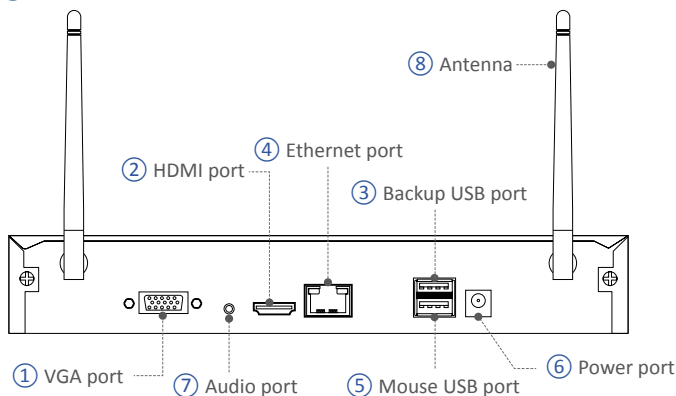
1\*Waterproof Lid

**NOTE:** there are 4pcs camera kit and 8pcs camera kit. The amount of cameras, 12V/1A camera power adapters, mounting templates, mounting screw bags and warning stickers will be the same as the camera kit you purchase. For waterproof lid, there is 1pc for the 4-camera kit and 2pcs for the 8-camera kit.

## 02 Gallery & Specs

### 2.1 Network Video Recorder

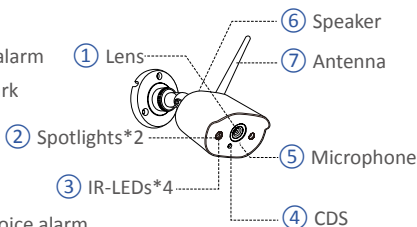
- ① VGA port: connect monitor with VGA port to NVR via VGA cable
- ② HDMI port: connect monitor with HDMI port to NVR via HDMI cable
- ③ Backup USB port: insert USB drive for backup or system upgrade
- ④ Ethernet port: connect router or switch to NVR via Ethernet cable
- ⑤ Mouse USB port: connect to mouse
- ⑥ Power port: connect to power supply
- ⑦ Audio port: audio signal output
- ⑧ Antenna: transmit wireless signal



**NOTE:** NVR with hard drive support 24/7 recording.

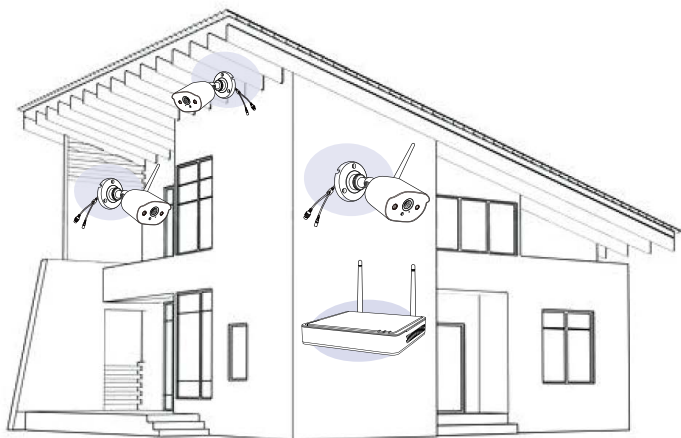
### 2.2 Camera

- ① Lens: capture image and video
- ② Spotlights: illumination and light alarm
- ③ IR-LEDs: provide night vision in dark environment
- ④ CDS: day and night auto switch
- ⑤ Microphone: for voice intercom
- ⑥ Speaker: for voice intercom and voice alarm
- ⑦ Antenna: transmit wireless signal



## 03 How the System Works

The wireless NVR system consists of two parts. One is the NVR connected to the monitor, and the other is the IP cameras installed. Both NVR and IPC need independent power supply to work. Users can watch the real-time video captured by each IPC on the monitor. These images will also be saved in NVR for later playback at any time.

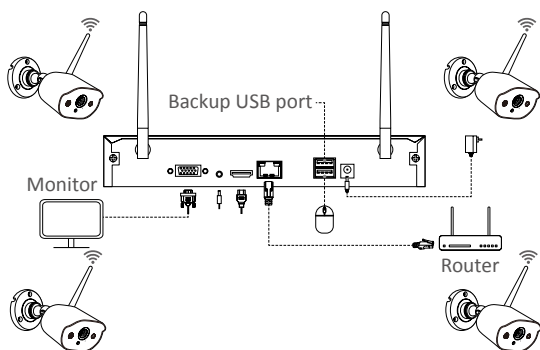


## 04 How to Connect the System

To ensure that the product can work normally, we recommend that you connect the whole system before installation to see if there is any damage during transportation.

How to connect the system:

1. Connect NVR to router using a network cable.
2. Connect monitor to NVR via HDMI or VGA port(VGA cable is not included).
3. Connect the included USB mouse to the top USB port of NVR.
4. Connect NVR to power supply (12V power adapter)
5. After the system starts, connect camera to the system (maximum support 8 channels).
6. The monitor will display live video of the camera.



## 05 Camera Installation Steps

1. Screw the antenna onto the camera. Please keep the antenna vertical for best reception.

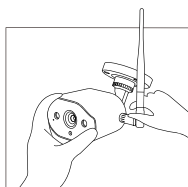
**Note:** fold the camera bracket before installing the antenna so you can easily install the antenna as shown in the picture.

2. Drill a hole on the wall according to mounting template, and insert wall plugs into the hole.

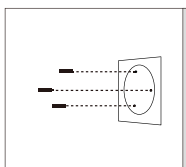
3. Align the mounting hole of the camera with the wall plugs, and then tighten screws into the wall plugs.

4. Loosen the bracket screw and adjust the camera to a proper angle.

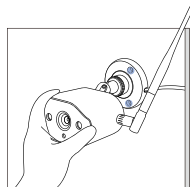
5. Tighten the screws.



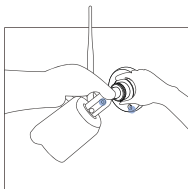
1. Mount the antenna



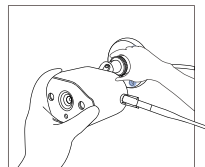
2. Insert wall plugs into the holes



3. Install the camera



4. Adjust the angle



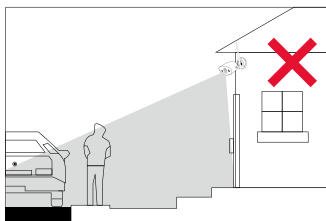
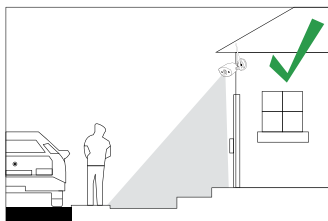
5. Tighten screws

## 06 Installation Tips

Please refer to the picture down below for the ideal installation.

It is recommended to place the camera at least 7 feet (2.1m) above the ground and tilted slightly downward towards the monitoring area, excluding any high-traffic areas. (E.g. sidewalks or roadways).

1. Ensure that the camera's view is open and free of obstructions.
2. Place the camera at no more than 20 feet (6.1m) to ensure that the area you want to monitor is within the field of view.
3. Install the camera within the receiving range of the recorder (refer to the camera specifications).
4. The camera can be used outdoors (protection rating IP66).



## 07 Hard Drive Installation

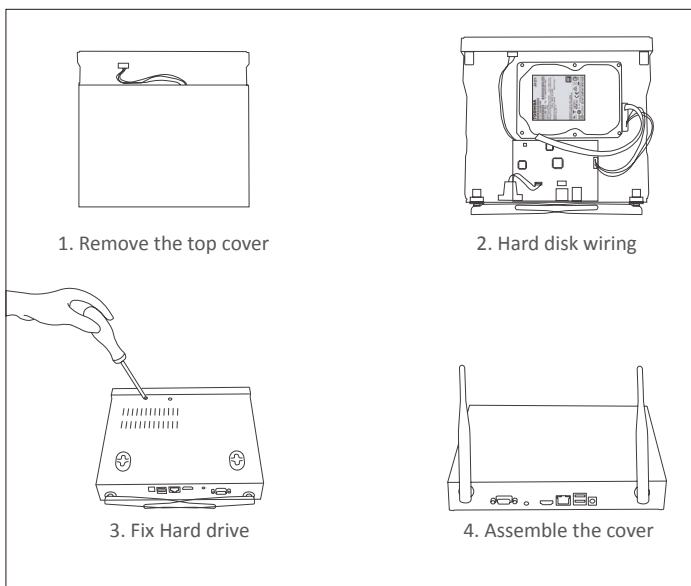
Some camera kits may not contain hard drives, depending on the camera kit you purchase. This kit support most 3.5" HDD.

**NOTE:** Please skip this step if your recorder has a pre-installed hard drive.

1. Power off the NVR, unscrew and remove the top cover of recorder.
2. Connect the power cable and data cable of the hard drive to the corresponding ports in the recorder.
3. Put the hard disk into the recorder. All wires should cross up over the hard drive.
4. Hold the hard disk and the NVR, gently turn it over and line up the holes on the hard disk with the holes on the NVR. Use a Phillips screwdriver, screw the included screws into the holes. Assemble the cover.

You need to format the hard drive before recording. Right click mouse> Main Menu> Hard Disk Management> select Hard Disk> Format> Apply.





## 08 Remote View Settings (App)



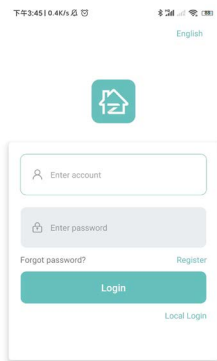
ZOSI



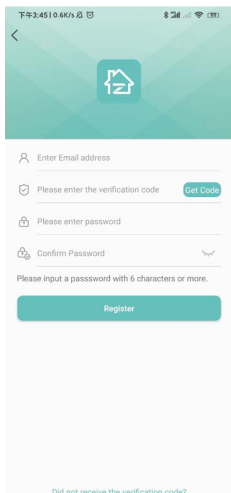
APP (IOS/Android)

### 8.1 Run the App

1. Install ZOSI Smart App. Open the App and enter the login page, enter your account and password to log in.
2. If you don't have an account yet, please tap Register, enter your email and get the verification code. And then set a password, tap Register to finish the registration.
3. Get to the main page and click the "+" in the middle to add device.
4. Select DVR -Wireless recorder.



Login

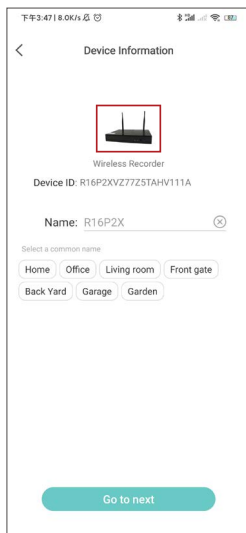
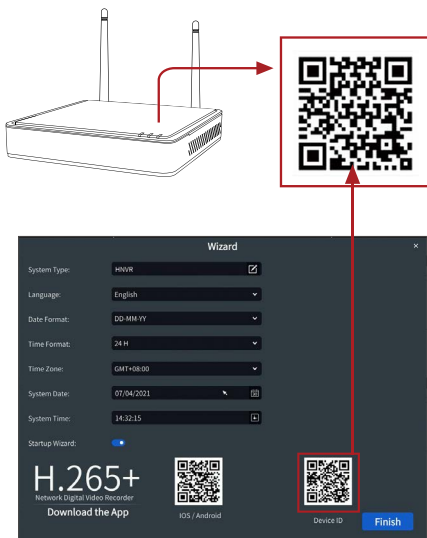


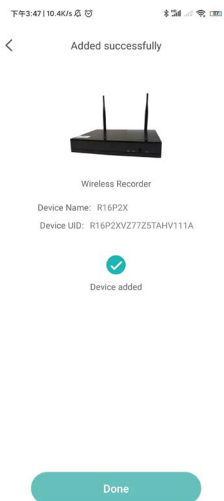
Register



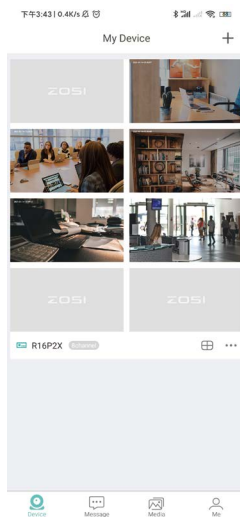
Add device icon

5. Scan the QR code or manually enter the ID number to add device.





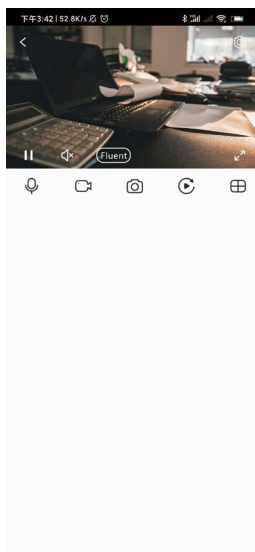
Register



Add device icon

## 8.2 Two-way Audio

Enter the channel, long press the audio icon to start voice intercom.



Device list

10

## 09 Remote View Settings (AVSS Client)

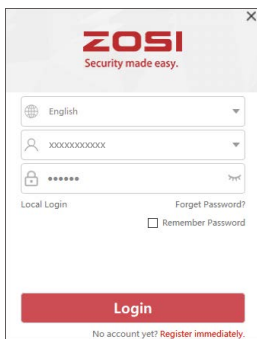
AVSS PC client can be applied to DVR/NVR/IPC monitoring, with functions such as live view, device management, and remote video playback etc..

Make sure that the device has completed the network configuration before adding device on PC client. Download and install the AVSS client, follow the steps below to start setup. Official Download: [www.nsst.com/www.zositech.com](http://www.nsst.com/www.zositech.com).

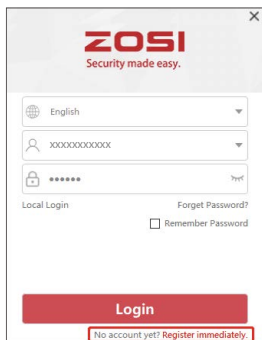
### 9.1 Login

Install and open AVSS PC client, select the language and click Login.

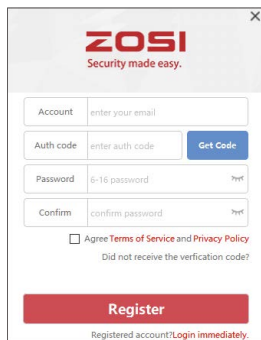
Please register an account first if you don't have one. It is recommended to log in with the account of ZOSI Smart App, or choose local login (no account and password is required).



### 9.2 Register



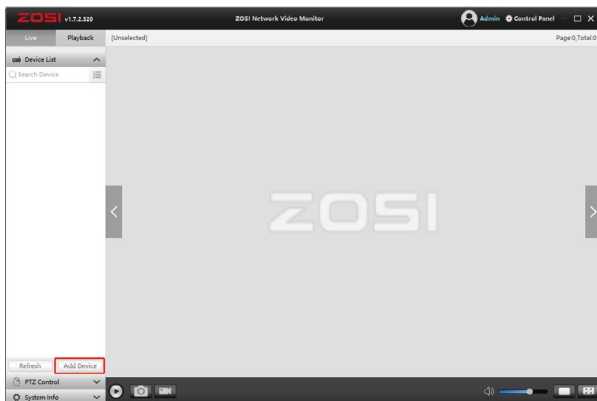
1. Click Register Now to enter the registration page



2. Enter the unregistered account and password to sign in

## 9.3 Device Management

### 9.3.1 Click Add Device below the device list to add device information



Select device type: NVR/DVR/IPC, etc., enter the device name, device ID or instant identifier ID (Drag the device QR code or sharing code into the QR Code Identification Zone), user name, device password and channel amount, and then click Confirm to save the setup.

**NOTE:** The default user name is "admin", the default password of IPC is "admin", NVR/DVR does not need to enter a password, the number of camera channels should be the number of cameras, the default is 1.

Device Management	
<b>+ Add Device</b>	
	Edit Device
	Device Config
	Search Device

**Device Info**

Device Type: IPC

Device Name: TZWC8

Device ID: I2WLC55AH8MV18MV1111A

Channel No.: 1

**Device Login**

User Name: admin

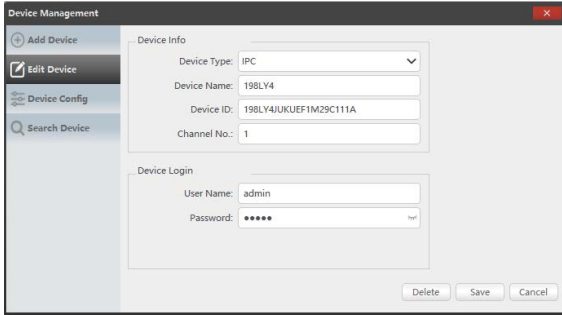
Password: \*\*\*\*\*

**QR Code Identification Zone**

Save Cancel

### 9.3.2 Edit Device

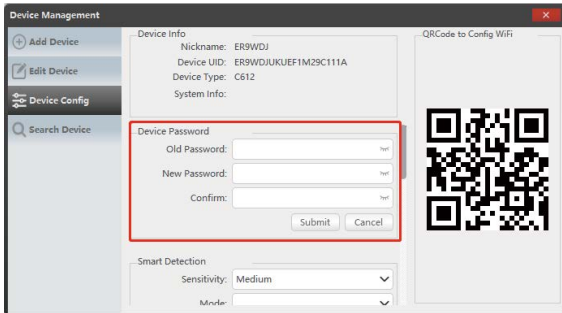
Modify the device type, device name, device ID, channel number, login user name and password, and save the modification.



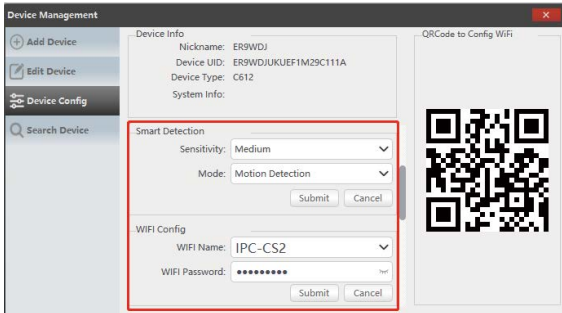
### 9.3.3 Device Configuration

Get to the device configuration.

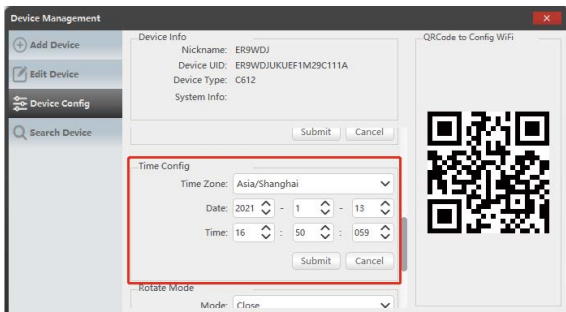
1. Modify the login password of the device



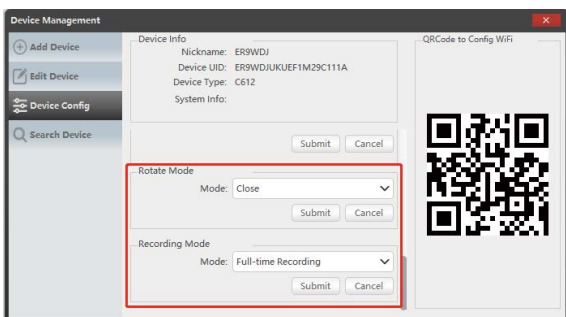
2. Set up intelligent detection, WiFi



### 3. Date and time



### 4. Mirror mode and recording mode.



Click Submit to apply after modifications.

### 9.3.4 Search Device

The device and AVSS client are connected to the same LAN, and the AVSS client can search out the information of the device.

The screenshot shows the 'Device Management' window with the 'Search Device' tab selected. It displays a table with the following data:

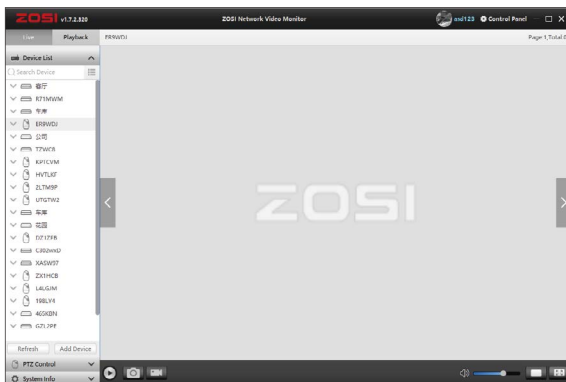
No.	UID	System Version	Type	Channel	IP address	Port
1	19K.PJD4FDDVA75WR111A				192.168.60.214	43959
2	ER9W/DJUKUEF1M29C111A				192.168.60.68	48523
3	CU7CCBF884MMCDJ1111A				192.168.60.98	49511
4	LH7E63LH26S/947G111A				192.168.60.5	43012

## 9.4 Live View

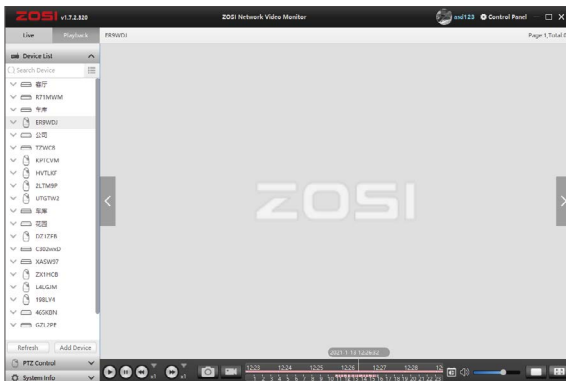
Select channel to watch live streaming.

## 9.5 Video Playback

Click Playback, select device, channel, date, time, click the play icon to start replaying recorded footage.



Live View



Playback

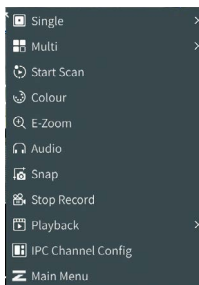


## 10 New Camera Pairing

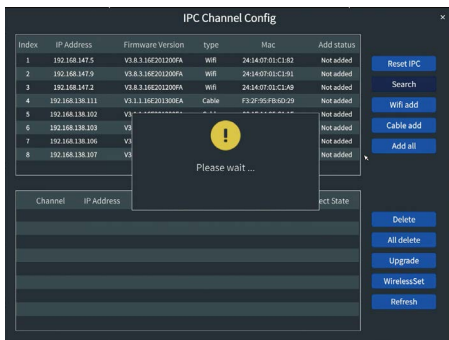
The cameras have been paired before leaving the factory, NVR will automatically display video after powering on the camera system. It is recommended that users conduct a power-on test before installation to ensure that each camera can work normally. If it fails, please contact our customer service.

If you want to add a new camera or reset the camera, please follow the following steps. Take out the camera, install the antenna, connect NVR and camera with a network cable. Make sure that NVR can display normally on the monitor, and then perform the following operations:

1. Right click the mouse, the main menu will come out.
2. Select and enter **IPC Channel Config** page.



3. Click the Search on the IPC Channel Config page to search for the corresponding IPC.



4. Double-click the searched cameras, or tick the camera and click **WiFi Add**. The status of IPC connected shows at the bottom of the page, and the corresponding monitoring video will display.

**IPC Channel Config**

Index	IP Address	Firmware Version	type	Mac	Add status
1	192.168.147.4	V3.8.3.16E201200FA	Wifi	24:14:07:01:C1:97	Not added
2	192.168.147.2	V3.8.3.16E201200FA	Wifi	24:14:07:01:C1:A8	Not added
3	192.168.147.6	V3.8.3.16E201200FA	Wifi	24:14:07:01:C1:7D	Not added
4	192.168.147.3	V3.8.3.16E201200FA	Wifi	24:14:07:01:C1:83	Not added
5	192.168.147.9	V3.8.3.16E201200FA	Wifi	24:14:07:01:C1:91	Not added
6	192.168.147.7	V3.8.3.16E201200FA	Wifi	24:14:07:01:C1:A1	Not added
7	192.168.147.5	V3.8.3.16E201200FA	Wifi	24:14:07:01:C1:82	Not added

Channel	IP Address	Firmware Version	type	Mac	Connect State

Reset IPC  
 Search  
 Wifi add  
 Cable add  
 Add all  
 Delete  
 All delete  
 Upgrade  
 WirelessSet  
 Refresh

**NOTE:** If all eight IPC channels have been connected and you need to connect other cameras, then you will need to delete one or more channels to add other cameras.

**IPC Channel Config**

Index	IP Address	Firmware Version	type	Mac	Add status
1	192.168.147.9	V3.8.3.16E201200FA	Wifi	24:14:07:01:C1:91	Not added
2	192.168.147.8	V3.8.3.16E201200FA	Wifi	24:14:07:01:C1:7D	Added
3	192.168.147.7	V3.8.3.16E201200FA	Wifi	24:14:07:01:C1:A1	Not added
4	192.168.147.4	V3.8.3.16E201200FA	Wifi	24:14:07:01:C1:97	Added
5	192.168.138.111	V3.1.1.16E201300EA	Cable	F3:2F:95:FB:6D:29	Not added
6	192.168.138.106	V3.1.1.16E201300EA	Cable	8B:7C:72:02:42:80	Not added
7	192.168.138.103	V3.1.1.16E201300EA	Cable	D9:53:F9:AD:08:80	Added
8	192.168.138.102	V3.1.1.16E201300EA	Cable	08:1F:14:95:C1:1F	Not added

Channel	IP Address	Firmware Version	type	Mac	Connect State
<input type="checkbox"/> 01	192.168.147.4	V3.8.3.16E201200FA	Wifi	24:14:07:01:C1:97	Connected
<input checked="" type="checkbox"/> 04	192.168.147.8	V3.8.3.16E201200FA	Wifi	24:14:07:01:C1:7D	Connected
<input type="checkbox"/> 05	192.168.147.3	V3.8.3.16E201200FA	Wifi	24:14:07:01:C1:83	Connected
<input type="checkbox"/> 06	192.168.147.2	V3.8.3.16E201200FA	Wifi	24:14:07:01:C1:A8	Connected
<input type="checkbox"/> 07	192.168.147.5	V3.8.3.16E201200FA	Wifi	24:14:07:01:C1:82	Connected
<input checked="" type="checkbox"/> 08	192.168.138.103	V3.1.1.16E201300EA	Ca-	D9:53:F9:AD:08:80	Connected

Reset IPC  
 Search  
 Wifi add  
 Cable add  
 Add all  
 Delete  
 All delete  
 Upgrade  
 WirelessSet  
 Refresh

## **11** Warranty & Customer Service

Please kindly note that product failures caused by the following conditions are not covered by the warranty:

1. Product failure due to accident, negligence, disaster, improper operation or misoperation.
2. Improper working environment or conditions, such as defaults due to power failure, ambient temperature, lightning strikes, etc..
3. The product has been repaired by a maintenance not authorized by the manufacturer.
4. Product purchased over 12 months from its original purchase date.
5. The product must be purchased from ZOSI official website or authorized dealer to enjoy warranty service.