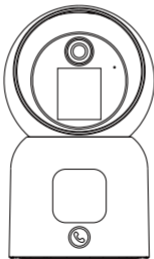


**ZOSI**

# C519M Wireless IP Camera Quick Start Guide



For more information, please visit [https:// www.zositech.com](https://www.zositech.com)  
Support Email: [service@zositech.com](mailto:service@zositech.com)

# What's in the Box



Camera



Power Adapter



Mounting Screw Bag



Mounting Plate



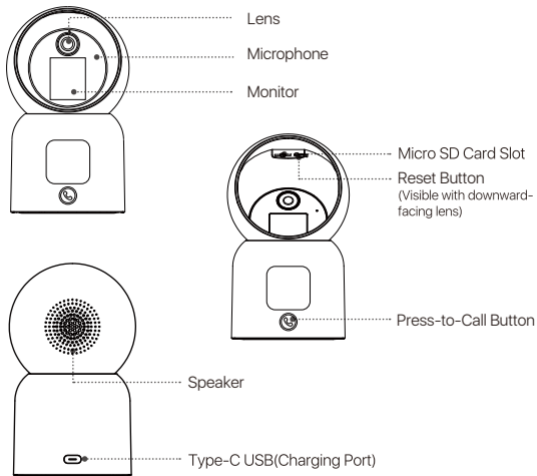
Mounting Template



Quick Start Guide

NOTE: The number of accessories varies with the camera model you purchased.

# Camera Structure Diagram



# Features

## Live Feed

Watch the camera's live video in real-time through Zosi Smart App. Adjust the camera's image quality, control its pan/tilt function to change the viewing angle, capture screenshots and record monitoring footage, and make a two-way communication.

## Two-Way Video Calling

The camera facilitates video call via press on the button or hand gesture. It seamlessly connects with the mobile App, and incoming call notifications are instantly delivered to your phone, allowing for two-way video communication, ensuring instant conversations with your family.

## Infrared Night Vision

The camera can automatically switch to night vision mode based on changes in the surrounding lighting conditions. It is equipped with built-in infrared lights that ensure clear visibility even in dark environments.

## Video Playback

There are two recording storage options: Micro SD card and cloud storage. You can either install a Micro SD card or subscribe to a cloud storage plan to playback recorded footage.

## Smart Detection

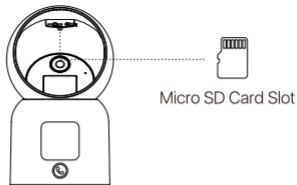
Detect motion or human presence and promptly send alarm notifications to the app, allowing you to check out at any time.

## Human Tracking

With built-in AI person detection algorithm, the camera automatically tracks and follows human objects within the monitoring area, keeping the subject in focus wherever they go.

# Installing a Micro SD Card

Make sure the camera is powered off. Lift the camera head upward to access the SD card slot. Insert the Micro SD card with the contact side facing upward. NOTE: When installing or removing the Micro SD card, make sure to power off the camera before proceeding to prevent damage to the Micro SD card. Please use Micro SD cards produced by reputable manufacturers. The device only supports the Fat32 format, so make sure the format of the MicroSD card installed is Fat32 before installation and use. It is recommended to use a Micro SD card with a minimum read/write speed of U1/Class 10.



## Device Startup

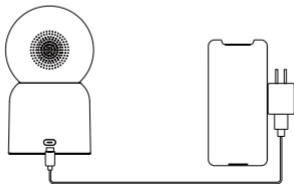
Connect the power cord to the Type-C charging port on the back of the camera, and the camera will automatically turn on.

Indicator light: Slow flashing indicates the device is not connected.

Fast flashing indicates the device is in a call.

Steady light indicates the device is connected.

NOTE: The camera will rotate automatically during the boot process. Do not manually adjust the camera forcefully. Self-checking will take approximately half a minute.



# App Installation

1. Scan the QR code below to download free Zosi Smart App on your phone. (Both Android and Apple systems can scan to download, and also can search and download in App Store or Google Store.)



Zosi Smart



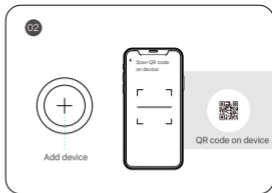
Android/IOS



App Operation Video

# Add Device

1. Open Zosi Smart App and follow the prompts to register and log in.
2. Tap "+" to add a device. Follow the in-app instructions to complete the network settings and addition of the device.



## Installation Notes

1. Please confirm that the device has been added to the App before installation.
2. The camera can be installed flat, ceiling or wall mounted, it is recommended to place it in a place with a wide viewing angle.

### Ceiling/Wall-mounted Notes

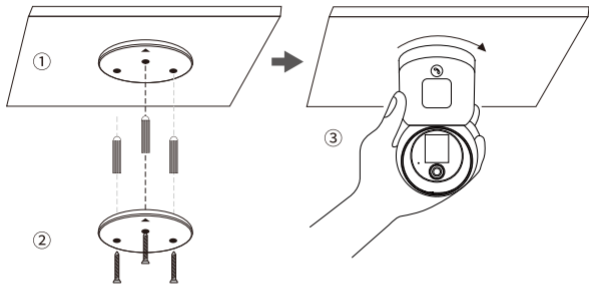
1. Drill holes in the wall according the mounting hole template and insert the plastic wall plugs.
2. Insert the setscrews and fix the bracket.
3. Install the camera on the bracket and tighten it after adjusting the camera angle.



## **Precautions for Installation and Use**

1. Please use the power adapter that comes with this product to power the device. (Using the different power adapter or the power adapter not in accordance with the instructions may cause damage to the device.)
2. This product cannot be installed outdoors. (Including but not limited to corridors, eaves, and covered courtyards.)
3. Indoors installation needs to be kept away from humid or high temperature environment.
4. Avoid direct sunlight for a long time when using this product.
5. Install and use this product in compliance with national and regional electrical safety regulations.
6. In order to improve the user experience, the APP will be updated and upgraded from time to time, the specific operations will slightly different, please follow the APP guidelines.

## Diagram of Wall-mounted/Ceiling Installation



1. Drill holes according to the mounting template, and insert the anchors into the holes.
  2. Tighten the screws to secure the mounting plate in place.
  3. To secure the camera, align the camera with the mounting plate, and turn the camera clockwise to lock into place.
- NOTE: To remove the camera from the plate, just turn the camera counterclockwise.

# AVSS

Download and install Zosi AVSS Client, and following this guide to complete installation. Official download link: <https://www.zositech.com/app/>, double-click "AVSS" icon, choose language and click log in. Note: It is recommended to log in with the account of Zosi Smart App to avoid multiple accounts using. Local login (No account and password required)

Please scan the QR code below to watch the AVSS operation video.



## FAQ

Q: Why is the device offline?

A: Please check whether the device is connected to the network and whether the router is functioning properly for internet access. Also, ensure that the router is enabled to automatically obtain an IP address.

Q: Why can't I find video recording files?

A: Please check if the Micro SD card is damaged and if the date you are searching for has valid recorded files. Additionally, verify that the system time settings on the device are correct.

Q : Does the camera support motion detection and image capture?

A : It captures images automatically when people, cars, are detected or when there is a change in detected images. Users can also manually capture images using our ZOSI Smart APP.

## Notification of Compliance

### Simplified EU Declaration of Conformity

ZOSI declares that the device is in compliance with the essential requirements and other relevant provisions of Directive 2014/53/EU.



### Correct Disposal of this Product

This marking indicates that this product cannot be disposed with other household wastes throughout the EU. To prevent possible harm to the environment or human health from uncontrolled waste disposal and promote the sustainable reuse of material resources, please recycle it responsibly. To return your used device, please visit the Return and Collection System or contact the retailer from whom the product was purchased. They can take this product away for environmentally safe recycling.

5G wifi indoor use only.

NOTE: This equipment has been tested and found to comply with the limits for a Class B digital device, pursuant to part 15 of the FCC Rules. These limits are designed to provide reasonable protection against harmful interference in a residential installation. This equipment generates, uses and can radiate radio frequency energy and, if not installed and used in accordance with the instructions, may cause harmful interference to radio communications. However, there is no guarantee that interference will not occur in a particular installation. If this equipment does cause harmful interference to radio or television reception, which can be determined by turning the equipment off and on, the user is encouraged to try to correct the interference by one or more of the following measures:

- Reorient or relocate the receiving antenna.
- Increase the separation between the equipment and receiver.
- Connect the equipment into an outlet on a circuit different from that to which the receiver is connected.
- Consult the dealer or an experienced radio/TV technician for help

Changes or modifications not expressly approved by the party responsible for compliance could void the user's authority to operate the equipment.

This device complies with Part 15 of the FCC Rules. Operation is subject to the following two conditions:

(1) this device may not cause harmful interference, and (2) this device must accept any interference received, including interference that may cause undesired operation.

#### RF Exposure Warning Statements:

This equipment complies with FCC radiation exposure limits set forth for an uncontrolled environment. This equipment shall be installed and operated with minimum distance 20cm between the radiator & body.

This device contains licence-exempt transmitter(s)/receiver(s) that comply with Innovation, Science and Economic Development Canada's licence-exempt RSS(s). Operation is subject to the following two conditions:

- (1) This device may not cause interference.
- (2) This device must accept any interference, including interference that may cause undesired operation of the device.

L'émetteur/récepteur exempt de licence contenu dans le présent appareil est conforme aux CNR d'Innovation, Sciences et Développement économique Canada applicables aux appareils radio exempts de licence. L'exploitation est autorisée aux deux conditions suivantes :

- (1) L'appareil ne doit pas produire de brouillage;
- (2) L'appareil doit accepter tout brouillage radioélectrique subi, même si le brouillage est susceptible d'en compromettre le fonctionnement.

#### Radio Frequency Exposure Statement for IC

This equipment complies with IC exposure limits set forth for an uncontrolled environment. The device can be used in portable exposure conditions. This equipment shall be installed and operated with minimum distance 20cm between the radiator & body.

Cet équipement est conforme aux limites d'exposition IC établies pour un environnement non contrôlé. L'appareil peut être utilisé dans des conditions d'exposition portables. Cet équipement doit être installé et utilisé avec une distance minimale de 20 cm entre le radiateur et le corps.

# ZOSI



[www.zositech.com](http://www.zositech.com)

Support Email: [service@zositech.com](mailto:service@zositech.com)

Facebook: <https://www.facebook.com/ZosiTechnology/>

Whatsapp: +1-866-841-6932

UK Whatsapp: +86 18675610962

Responsible Party:

Company name :Loocam Technology LLC

Address: 2205 Hutton Dr, Unit 100, Carrollton TX 75006

Tel: 657-223-3477

E-mail: [lavenderl@loocam.com](mailto:lavenderl@loocam.com)

Copyright © 2023 ZOSI Technology Co., Ltd.

No part of this publication may be reproduced in any way without the written permission of ZOSI. The information in this publication is believed to be accurate in all respects. ZOSI assumes no responsibility for any consequences resulting from their use. As our products require continuous improvement, ZOSI reserves the right to modify product designs, specifications and prices without notice and without any obligation. All rights reserved, and ZOSI reserves the final interpretation right of this manual.



**RoHS**