
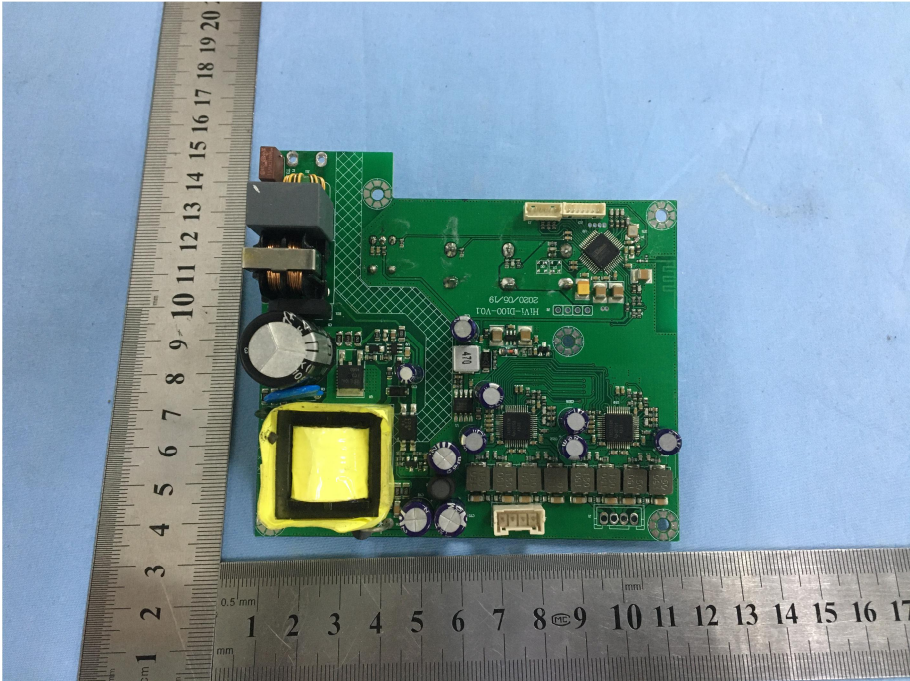
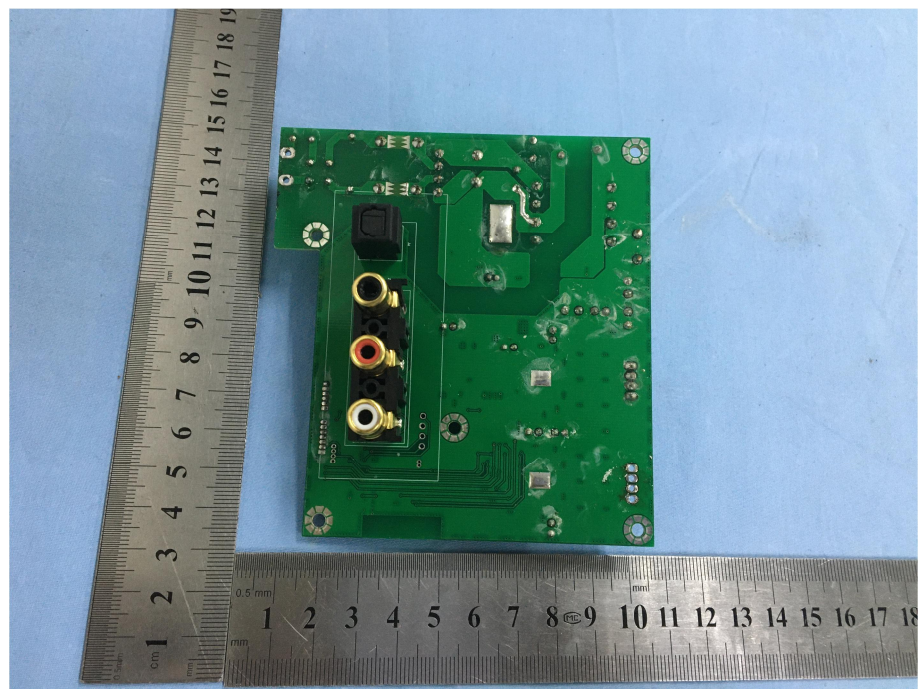


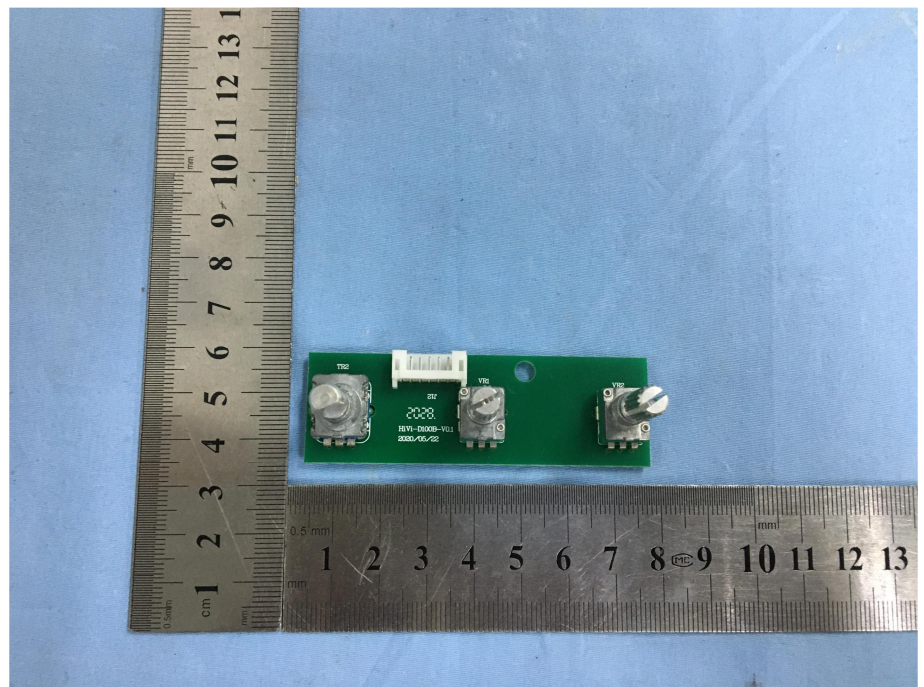
EXHIBIT 3 - EUT INTERNAL PHOTOGRAPHS

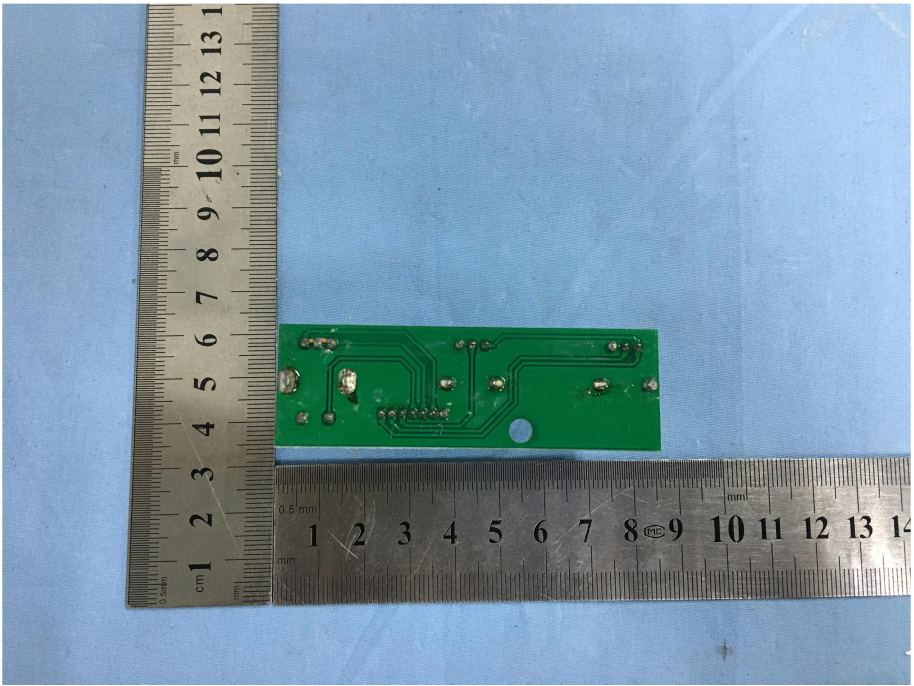
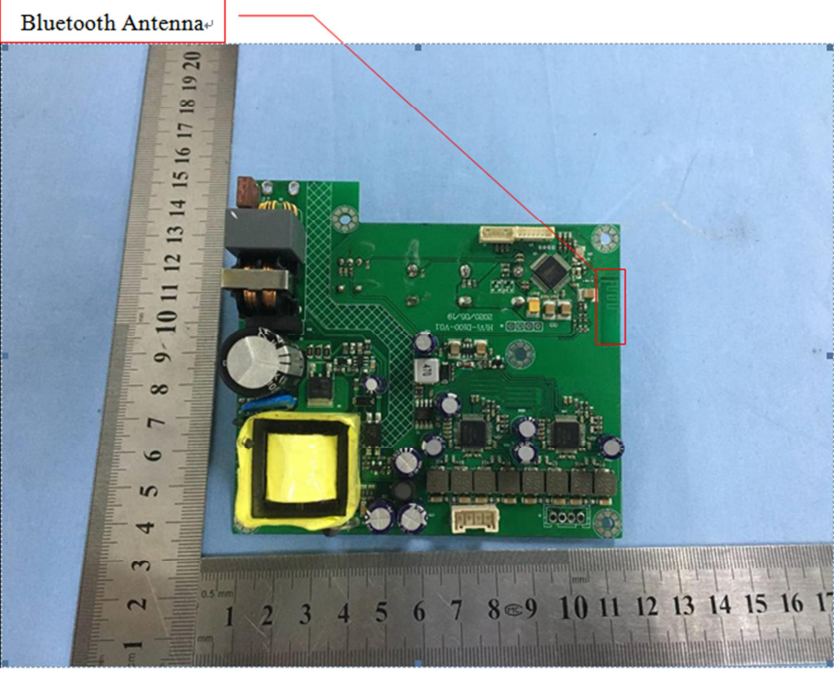
<p>EUT Housing and Board View 1</p>	 A photograph showing the internal components of an EUT housed in a dark wood-grain enclosure. A green PCB is mounted inside, featuring a yellow transformer, a black speaker, and various electronic components. A black power cord is connected to the board. A metal ruler is placed vertically on the left and horizontally at the bottom for scale.
<p>Solder Board-Component View 1</p>	 A close-up photograph of the green PCB components. It shows a yellow transformer, a black speaker, and several electrolytic capacitors. A metal ruler is placed vertically on the left and horizontally at the bottom for scale.

**Solder
Board-Component View
2**



**Solder
Board-Component View
3**



<p style="text-align: center;">Solder Board-Component View 4</p>	 <p>A photograph showing a small green printed circuit board (PCB) component with several solder joints. The component is placed on a blue surface next to a metal ruler for scale. The ruler shows centimeter and millimeter markings, with the component spanning approximately 6 cm in length.</p>
<p style="text-align: center;">Antenna View</p>	 <p>A photograph showing a larger green PCB assembly with various components, including a yellow antenna. A red box highlights a specific area on the board, and a red line points from the text "Bluetooth Antenna" to this area. A metal ruler is visible at the bottom for scale, showing centimeter and millimeter markings.</p>