



## TEST REPORT

Product Name: Hoverboard Heroes  
FCC ID: 2ANSF-HH  
Trademark: N/A  
Model Number: ODY-101HH, ODY-102HH, ODY-103HH  
Prepared For: SHENZHEN BESUNVO TECHNOLOGY CO. LTD  
Address: 4th Floor, Building 11, Baoke Industrial Park, Langkou Community, Dalang Street, Longhua District, Shenzhen. China  
Manufacturer: SHENZHEN BESUNVO TECHNOLOGY CO. LTD  
Address: 4th Floor, Building 11, Baoke Industrial Park, Langkou Community, Dalang Street, Longhua District, Shenzhen. China  
Prepared By: Shenzhen CTB Testing Technology Co., Ltd.  
Address: 1&2/F., Building A, No.26, Xinh Road, Xinqiao, Xinqiao Street, Bao'an District, Shenzhen, Guangdong, China  
Sample Received Date: Apr. 02, 2024  
Sample tested Date: Apr. 02, 2024 to Apr. 12, 2024  
Issue Date: Apr. 12, 2024  
Report No.: CTB240412080RFX  
Test Standards: FCC Part15.249  
ANSI C63.10:2013  
Test Results: PASS  
Remark: This is 2.4GHz radio test report.

Compiled by:

Reviewed by:

Approved by:

Zhou kui

Arron Liu



Zhou Kui

Arron Liu

Bin Mei / Director

Note: If there is any objection to the inspection results in this report, please submit a written report to the company within 15 days from the date of receiving the report. The test report is effective only with both signature and specialized stamp. This result(s) shown in this report refer only to the sample(s) tested. Without written approval of Shenzhen CTB Testing Technology Co., Ltd. this report can't be reproduced except in full. The tested sample(s) and the sample information are provided by the client. "\*" indicates the testing items were fulfilled by subcontracted lab. "#" indicates the items are not in CNAS accreditation scope.

## TABLE OF CONTENT

Test Report Declaration	Page
<b>1. VERSION</b> .....	3
<b>2. TEST SUMMARY</b> .....	4
<b>3. MEASUREMENT UNCERTAINTY</b> .....	5
<b>4. PRODUCT INFORMATION AND TEST SETUP</b> .....	6
4.1 Product Information .....	6
4.2 Test Setup Configuration .....	6
4.3 Support Equipment .....	6
4.4 Channel List .....	7
4.5 Test Mode .....	7
4.6 Test Environment .....	7
<b>5. TEST FACILITY AND TEST INSTRUMENT USED</b> .....	8
5.1 Test Facility .....	8
5.2 Test Instrument Used .....	8
<b>6. AC POWER LINE CONDUCTED EMISSION</b> .....	10
6.1 Block Diagram Of Test Setup .....	10
6.2 Limit .....	10
6.3 Test procedure .....	10
6.4 Test Result .....	12
<b>7. RADIATED SPURIOUS EMISSION</b> .....	13
7.1 Block Diagram Of Test Setup .....	13
7.2 Limit .....	13
7.3 Test procedure .....	14
7.4 Test Result .....	15
<b>8. BAND EDGE AND RF CONDUCTED SPURIOUS EMISSIONS</b> .....	20
8.1 Block Diagram Of Test Setup .....	20
8.2 Limit .....	20
8.3 Test procedure .....	21
8.4 Test Result .....	22
<b>9. BANDWIDTH TEST</b> .....	23
9.1 Block Diagram Of Test Setup .....	23
9.2 Limit .....	23
9.3 Test procedure .....	23
9.4 Test Result .....	23
<b>10. ANTENNA REQUIREMENT</b> .....	25
<b>11. EUT PHOTOGRAPHS</b> .....	26
<b>12. EUT TEST SETUP PHOTOGRAPHS</b> .....	31

(Note: N/A means not applicable)

1. VERSION

Report No.	Issue Date	Description	Approved
CTB240412080RFX	Apr. 12, 2024	Original	Valid

**2. TEST SUMMARY**

The Product has been tested according to the following specifications:

<b>Standard Section</b>	<b>Test Item</b>	<b>Judgment</b>	<b>Remark</b>
<b>15.207</b>	<b>Conducted Emission</b>	<b>N/A</b>	
<b>15.215</b>	<b>20dB Bandwidth</b>	<b>PASS</b>	
<b>15.249</b>	<b>Fundamental &amp;Radiated Spurious Emission Measurement</b>	<b>PASS</b>	
<b>15.205</b>	<b>Band Edge Emission</b>	<b>PASS</b>	
<b>15.203</b>	<b>Antenna Requirement</b>	<b>PASS</b>	

Remark:

Test according to ANSI C63.10-2013.

### 3. MEASUREMENT UNCERTAINTY

Where relevant, the following measurement uncertainty levels have been estimated for tests performed on the Product as specified in CISPR 16-4-2. This uncertainty represents an expanded uncertainty expressed at approximately the 95% confidence level using a coverage factor of k=2.

Item	Uncertainty
Occupancy bandwidth	54.3kHz
Conducted output power Above 1G	0.9dB
Conducted output power below 1G	0.9dB
Power Spectral Density , Conduction	0.9dB
Conduction spurious emissions	2.0dB
Out of band emission	2.0dB
3m chamber Radiated spurious emission(9KHz-30MHz)	4.8dB
3m chamber Radiated spurious emission(30MHz-1GHz)	4.6dB
3m chamber Radiated spurious emission(1GHz-18GHz)	5.1dB
3m chamber Radiated spurious emission(18GHz-40GHz)	3.4dB
humidity uncertainty	5.5%
Temperature uncertainty	0.63°C
frequency	1×10 <sup>-7</sup>
Conducted Emission (150KHz-30MHz)	3.2 dB
Radiated Emission(30MHz ~ 1000MHz)	4.8 dB
Radiated Emission(1GHz ~6GHz)	4.9 dB

**4. PRODUCT INFORMATION AND TEST SETUP**

4.1 Product Information

Model(s): ODY-101HH, ODY-102HH, ODY-103HH

Model Description: All the model are the same circuit and RF module, only for model name. Test sample model: ODY-101HH

Hardware Version: V1.0

Software Version: V1.0

Operation Frequency: 2405-2475MHz

Type of Modulation: GFSK

Antenna installation: Internal Antenna

Antenna Gain: 0.17dBi

Ratings: DC 3V by battery(Remote control)

4.2 Test Setup Configuration

See test photographs attached in EUT TEST SETUP PHOTOGRAPHS for the actual connections between Product and support equipment.

4.3 Support Equipment

Item	Equipment	Mfr/Brand	Model/Type No.	Series No.	Note
1.	Adapter	JIYIN	JY-05100C	/	/

**Notes:**

1. All the equipment/cables were placed in the worst-case configuration to maximize the emission during the test.
2. Grounding was established in accordance with the manufacturer's requirements and conditions for the intended use.

#### 4.4 Channel List

CH No.	Frequency (MHz)	CH No.	Frequency (MHz)	CH No.	Frequency (MHz)
0	2405	1	2440	2	2475

#### 4.5 Test Mode

All test mode(s) and condition(s) mentioned were considered and evaluated respectively by performing full tests, the worst data were recorded and reported.

Test mode	Low channel	Middle channel	High channel
Transmitting GFSK	2405MHz	2440MHz	2475MHz

#### 4.6 Test Environment

Humidity(%):	54
Atmospheric Pressure(kPa):	101
Normal Voltage(DC):	3V
Normal Temperature(°C)	23
Low Temperature(°C)	0
High Temperature(°C)	40

## 5. TEST FACILITY AND TEST INSTRUMENT USED

### 5.1 Test Facility

All measurement facilities used to collect the measurement data are located at 1&2F., Building A, No. 26, Xinh Road, Xinqiao, Xinqiao Street, Bao'an District, Shenzhen, Guangdong, China. The site and apparatus are constructed in conformance with the requirements of ANSI C63.4 and CISPR 16-1-1 other equivalent standards.

### 5.2 Test Instrument Used

No.	Equipment	Manufacturer	Type No.	Serial No.	Firmware Version	Calibrated until
1	Spectrum Analyzer	Agilent	N9020A	MY52090073	A.14.16	2024.07.05
2	Power Sensor	Agilent	U2021XA	MY56120032	/	2024.07.05
3	Power Sensor	Agilent	U2021XA	MY56120034	/	2024.07.05
4	Communication test set	R&S	CMW500	108058	V3.5.80	2024.07.05
5	Spectrum Analyzer	KEYSIGHT	N9020A	MY51289897	A.14.16	2024.07.05
6	Signal Generator	Agilent	N5181A	MY50140365	A.01.60	2024.07.05
7	Vector signal generator	Agilent	N5182A	MY47420195	A.01.87	2024.07.05
8	Communication test set	Agilent	E5515C	MY50102567	B.19.07 (E1962B)	2024.07.06
9	2.4 GHz Filter	Shenxiang	MSF2400-24 83.5MS-1154	20181015001	/	2024.07.05
10	5 GHz Filter	Shenxiang	MSF5150-58 50MS-1155	20181015001	/	2024.07.06
11	Filter	Xingbo	XBLBQ-DZA 120	190821-1-1	/	2024.07.06
12	BT&WI-FI Automatic test software	Microwave	MTS8000	Ver. 2.0.0.0	/	/
13	Rohde & Schwarz SFU Broadcast Test System	R&S	SFU	101017	/	2024.10.30
14	Temperature humidity chamber	Hongjing	TH-80CH	DG-15174	/	2024.07.05
15	234G Automatic test software	Microwave	MTS8200	Ver. 2.0.0.0	/	/
16	966 chamber	C.R.T.	966	/	/	2024.08.11
17	Receiver	R&S	ESPI	100362	RF_ATTEN_7 (104489/003)	2024.07.05
18	Amplifier	HP	8447E	2945A02747	/	2024.07.05
19	Amplifier	Agilent	8449B	3008A01838	/	2024.07.05
20	TRILOG Broadband Antenna	Schwarzbeck	VULB 9168	00869	/	2024.07.08
21	Double Ridged Broadband Horn	Schwarzbeck	BBHA9120D	01911	/	2024.07.08



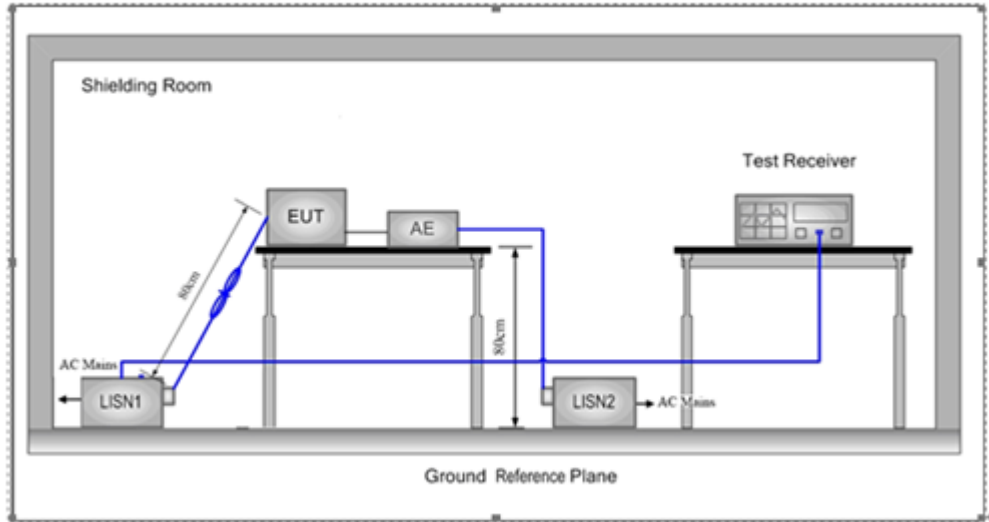
Antenna						
22	EMI test software	Fala	EZ-EMC	FA-03A2 RE	/	/
23	Loop Antenna	Schwarzbeck	FMZB 1519B	1519B-224	/	2024.07.08
24	loop antenna	ZHINAN	ZN30900A	GTS534	/	/
25	40G Horn antenna	A/H/System	SAS-574	588	/	2024.10.30
26	Amplifier	AEROFLEX	Aeroflex	097	/	2024.07.05

Continuous disturbance						
No.	Equipment	Manufacturer	Model No.	Serial No.	Firmware Version	Calibrated until
1	LISN	ROHDE&SCHWARZ	ESH3-Z5	100318	/	2024.07.05
2	Pulse limiter	ROHDE&SCHWARZ	ESH3Z2	357881052	/	2024.07.05
3	EMI TEST RECEIVER	ROHDE&SCHWARZ	ESCI	100428/003	V4.42.SP3	2024.07.05
4	Coaxial cable	ZDECL	Z302S-NJ-SM AJ-12M	18091905	/	2024.07.05
5	ISN	Schwarzbeck	NTFM8158	183	/	2024.07.05
6	Communication test set	Agilent	E5515C	MY50102567	B.19.07 (E1962B)	2024.07.05
7	Communication test set	R&S	CMW500	108058	V3.5.80	2024.07.05
8	EZ-EMC	Frad	EMC-con3A1.1	/	/	/

Radiated emission						
No.	Equipment	Manufacturer	Model No.	Serial No.	Firmware Version	Calibrated until
1	Double Ridged Broadband Horn Antenna	Schwarzbeck	BBHA 9120 D	01911	/	2024.07.08
2	TRILOG Broadband Antenna	Schwarzbeck	VULB 9168	00869	/	2024.07.08
3	Amplifier	Agilent	8449B	3008A01838	/	2024.07.05
4	Amplifier	HP	8447E	2945A02747	/	2024.07.05
5	EMI TEST RECEIVER	ROHDE&SCHWARZ	ESCI	100428/003	V4.42.SP3	2024.07.05
6	Coaxial cable	ETS	RFC-SNS-100-N MS-80 NI	/	/	2024.07.05
7	Coaxial cable	ETS	RFC-SNS-100-N MS-20 NI	/	/	2024.07.05
8	Coaxial cable	ETS	RFC-SNS-100-S MS-20 NI	/	/	2024.07.05
9	Coaxial cable	ETS	RFC-NNS-100- NMS-300 NI	/	/	2024.07.05
10	Communication test set	Agilent	E5515C	MY50102567	B.19.07 (E1962B)	2024.07.05
11	Communication test set	R&S	CMW500	108058	V3.5.80	2024.07.05
12	EZ-EMC	Frad	EMC-con3A1.1	/	/	/

## 6. AC POWER LINE CONDUCTED EMISSION

### 6.1 Block Diagram Of Test Setup



### 6.2 Limit

**Table 4 - AC power-line conducted emissions limits**

Frequency (MHz)	Conducted limit (dB $\mu$ V)	
	Quasi-peak	Average
0.15 - 0.5	66 to 56 <sup>Note 1</sup>	56 to 46 <sup>Note 1</sup>
0.5 - 5	56	46
5 - 30	60	50

**Note 1:** The level decreases linearly with the logarithm of the frequency.

\* Decreasing linearly with the logarithm of the frequency

### 6.3 Test procedure

- 1) The mains terminal disturbance voltage test was conducted in a shielded room.
- 2) The EUT was connected to AC power source through a LISN 1 (Line Impedance Stabilization Network) which provides a  $50\Omega/50\mu\text{H} + 5\Omega$  linear impedance. The power cables of all other units of the EUT were connected to a second LISN 2, which was bonded to the ground reference plane in the same way as the LISN 1 for the unit being measured. A multiple socket outlet strip was used to connect multiple power cables to a single LISN provided the rating of the LISN was not exceeded.
- 3) The tabletop EUT was placed upon a non-metallic table 0.8m above the ground reference plane. And for floor-standing arrangement, the EUT was placed on the horizontal ground reference plane,
- 4) The test was performed with a vertical ground reference plane. The rear of the EUT shall be 0,4 m from the vertical ground reference plane. The vertical ground reference plane was bonded to the horizontal ground reference plane. The LISN 1 was placed 0,8 m from the boundary of the unit under test and bonded to a ground reference plane for LISNs mounted on top of the ground reference plane.

This distance was between the closest points of the LISN 1 and the EUT. All other units of the EUT and associated equipment was at least 0,8 m from the LISN 2.

- 5) In order to find the maximum emission, the relative positions of equipment and all of the interface cables must be changed according to ANSI C63.10 on conducted measurement.
- 6) All modes were tested at AC 120V and 240V, only the worst result of AC 120V 60Hz was reported.
- 7) If a EUT received DC power from the USB Port of Notebook PC, the PC's adapter received AC120V/60Hz power through a Line Impedance Stabilization Network (LISN) which supplied power source and was grounded to the ground plane.

#### 6.4 Test Result

N/A

NOTE: This EUT is powered by DC power only, this test item is not applicable.

## 7. RADIATED SPURIOUS EMISSION

### 7.1 Block Diagram Of Test Setup

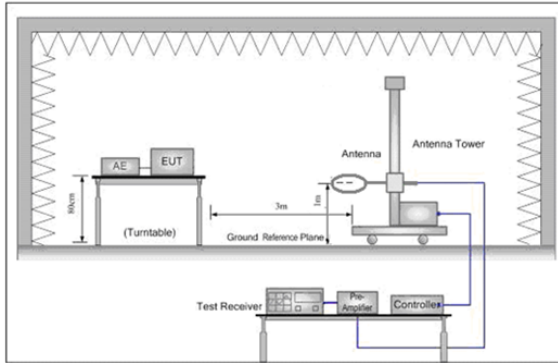


Figure 1. Below 30MHz

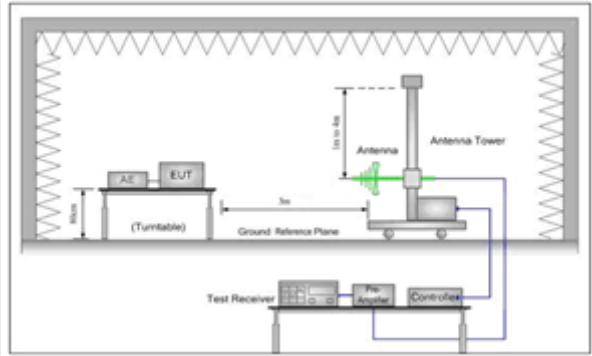
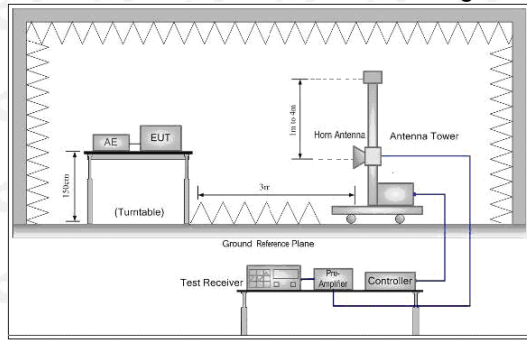


Figure 2. 30MHz to 1GHz



### 7.2 Limit

Spurious Emissions:

Frequency	Field strength (microvolt/meter)	Limit (dB $\mu$ V/m )	Remark	Measurement distance (m)
0.009MHz-0.490MHz	2400/F(kHz)	-	-	300
0.490MHz-1.705MHz	24000/F(kHz)	-	-	30
1.705MHz-30MHz	30	-	-	30
30MHz-88MHz	100	40.0	Quasi-peak	3
88MHz-216MHz	150	43.5	Quasi-peak	3
216MHz-960MHz	200	46.0	Quasi-peak	3
960MHz-1GHz	500	54.0	Quasi-peak	3
Above 1GHz	500	54.0	Average	3

Note: 15.35(b), Unless otherwise specified, the limit on peak radio frequency emissions is 20dB above the maximum permitted average emission limit applicable to the equipment under test. This peak limit applies to the total peak emission level radiated by the device.

7.3 Test procedure

**Below 1GHz test procedure as below:**

- a.The EUT was placed on the top of a rotating table 0.8 meters above the ground at a 3 meter semi-anechoic chamber. The table was rotated 360 degrees to determine the position of the highest radiation.
- b.The EUT was set 3 meters away from the interference-receiving antenna, which was mounted on the top of a variable-height antenna tower.
- c.The antenna height is varied from one meter to four meters above the ground to determine the maximum value of the field strength. Both horizontal and vertical polarizations of the antenna are set to make the measurement.
- d.For each suspected emission, the EUT was arranged to its worst case and then the antenna was tuned to heights from 1 meter to 4 meters (for the test frequency of below 30MHz, the antenna was tuned to heights 1 meter) and the rota table table was turned from 0 degrees to 360 degrees to find the maximum reading.
- e.The test-receiver system was set to Peak Detect Function and Specified Bandwidth with Maximum Hold Mode.
- f.If the emission level of the EUT in peak mode was 10dB lower than the limit specified, then testing could be stopped and the peak values of the EUT would be reported. Otherwise the emissions that did not have 10dB margin would be re-tested one by one using peak, quasi-peak or average method as specified and then reported in a data sheet.

**Above 1GHz test procedure as below:**

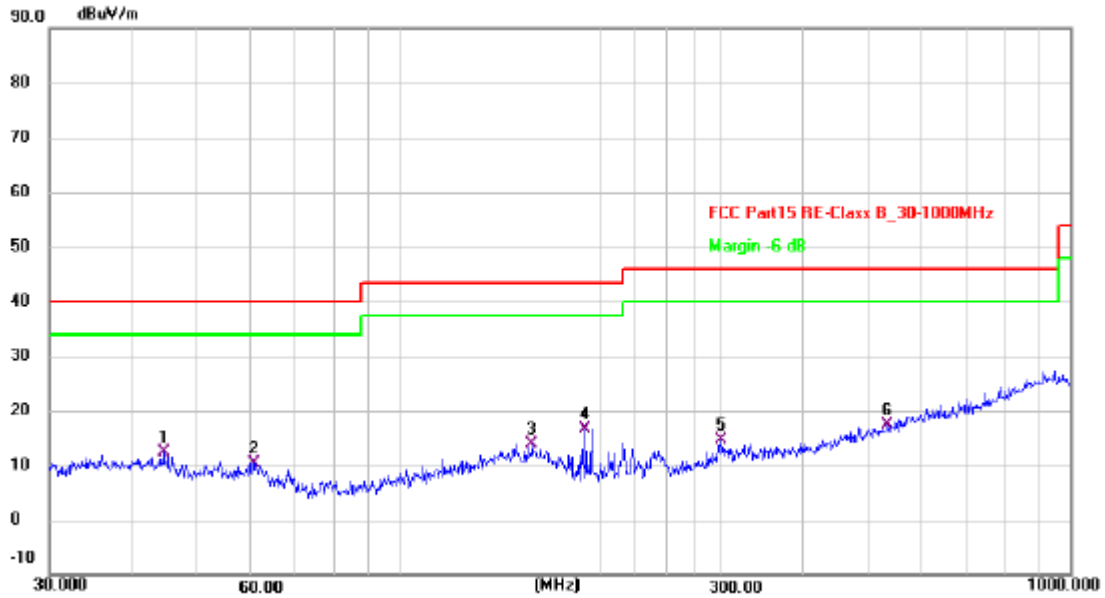
- g.Different between above is the test site, change from Semi- Anechoic Chamber to fully Anechoic Chamber and change form table 0.8 meter to 1.5 meter( Above 18GHz the distance is 1 meter and table is 1.5 meter).
- h.Test the EUT in the lowest channel ,the middle channel ,the Highest channel
- j.Repeat above procedures until all frequencies measured was complete.
- j. Full battery is used during test

Receiver set:

Frequency	Detector	RBW	VBW	Remark
0.009MHz-0.090MHz	Peak	10kHz	30KHz	Peak
0.009MHz-0.090MHz	Average	10kHz	30KHz	Average
0.090MHz-0.110MHz	Quasi-peak	10kHz	30KHz	Quasi-peak
0.110MHz-0.490MHz	Peak	10kHz	30KHz	Peak
0.110MHz-0.490MHz	Average	10kHz	30KHz	Average
0.490MHz -30MHz	Quasi-peak	10kHz	30kHz	Quasi-peak
30MHz-1GHz	Quasi-peak	120 kHz	300KHz	Quasi-peak
Above 1GHz	Peak	1MHz	3MHz	Peak
	Peak	1MHz	10Hz	Average

### 7.4 Test Result

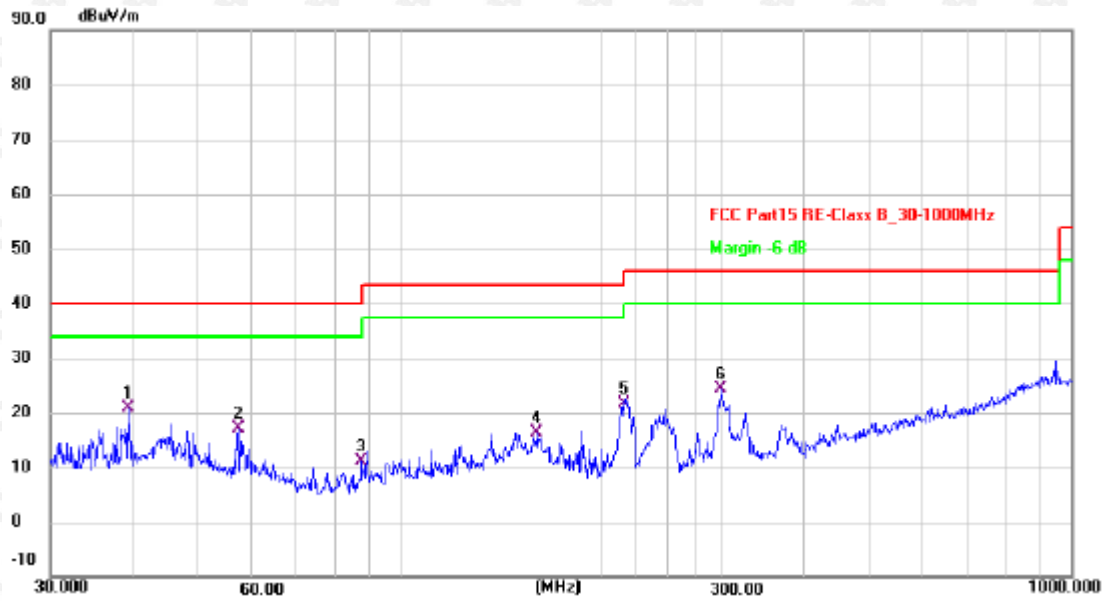
Below 1GHz Test Results:  
Antenna polarity: H



No.	Frequency (MHz)	Reading (dBuV)	Factor (dB/m)	Level (dBuV/m)	Limit (dBuV/m)	Margin (dB)	Detector
1	44.4307	26.62	-14.36	12.26	40.00	-27.74	QP
2	60.7043	25.81	-15.45	10.36	40.00	-29.64	QP
3	157.5588	26.61	-12.64	13.97	43.50	-29.53	QP
4 *	189.0743	32.81	-16.18	16.63	43.50	-26.87	QP
5	301.4223	27.61	-12.98	14.63	46.00	-31.37	QP
6	531.9634	24.80	-7.32	17.48	46.00	-28.52	QP

Remark: Factor = Cable lose + Antenna factor - Pre-amplifier; Margin = Measurement – Limit

Antenna polarity: V



No.	Frequency (MHz)	Reading (dBuV)	Factor (dB/m)	Level (dBuV/m)	Limit (dBuV/m)	Margin (dB)	Detector
1 *	39.1615	34.57	-13.66	20.91	40.00	-19.09	QP
2	57.3923	32.35	-15.28	17.07	40.00	-22.93	QP
3	87.4176	29.52	-18.43	11.09	40.00	-28.91	QP
4	159.7844	29.17	-12.67	16.50	43.50	-27.00	QP
5	215.2678	37.65	-16.12	21.53	43.50	-21.97	QP
6	300.3672	37.41	-13.00	24.41	46.00	-21.59	QP

Remark: Factor = Cable lose + Antenna factor - Pre-amplifier; Margin = Measurement – Limit



CH Low (2405MHz)  
Horizontal:

Frequency (MHz)	Meter Reading (dBμV)	Factor (dB)	Emission Level (dBμV/m)	Limits (dBμV/m)	Margin (dB)	Detector Type
2405.00	100.20	-5.84	94.36	114	-19.64	peak
2405.00	92.38	-5.84	86.54	94	-7.46	AVG
4810.00	58.44	-3.64	54.80	74	-19.20	peak
4810.00	49.70	-3.64	46.06	54	-7.94	AVG
7215.00	59.31	-0.95	58.36	74	-15.64	peak
7215.00	48.75	-0.95	47.80	54	-6.20	AVG

Remark: Factor = Antenna Factor + Cable Loss – Pre-amplifier.

Vertical:

Frequency (MHz)	Meter Reading (dBμV)	Factor (dB)	Emission Level (dBμV/m)	Limits (dBμV/m)	Margin (dB)	Detector Type
2405.00	101.09	-5.84	95.25	114	-18.75	peak
2405.00	92.33	-5.84	86.49	94	-7.51	AVG
4810.00	58.14	-3.64	54.50	74	-19.50	peak
4810.00	47.61	-3.64	43.97	54	-10.03	AVG
7215.00	60.69	-0.95	59.74	74	-14.26	peak
7215.00	50.99	-0.95	50.04	54	-3.96	AVG

Remark: Factor = Antenna Factor + Cable Loss – Pre-amplifier.

CH Middle (2440MHz)  
Horizontal:

Frequency	Meter Reading	Factor	Emission Level	Limits	Margin	Detector Type
(MHz)	(dB $\mu$ V)	(dB)	(dB $\mu$ V/m)	(dB $\mu$ V/m)	(dB)	
2440.00	97.30	-5.71	91.59	114	-22.41	peak
2440.00	91.23	-5.71	85.52	94	-8.48	AVG
4880.00	55.40	-3.51	51.89	74	-22.11	peak
4880.00	45.28	-3.51	41.77	54	-12.23	AVG
7320.00	56.25	-0.82	55.43	74	-18.57	peak
7320.00	47.29	-0.82	46.47	54	-7.53	AVG

Remark: Factor = Antenna Factor + Cable Loss – Pre-amplifier.

Vertical:

Frequency	Meter Reading	Factor	Emission Level	Limits	Margin	Detector Type
(MHz)	(dB $\mu$ V)	(dB)	(dB $\mu$ V/m)	(dB $\mu$ V/m)	(dB)	
2440.00	98.27	-5.71	92.56	114	-21.44	peak
2440.00	92.58	-5.71	86.87	94	-7.13	AVG
4880.00	55.52	-3.51	52.01	74	-21.99	peak
4880.00	45.35	-3.51	41.84	54	-12.16	AVG
7320.00	57.74	-0.82	56.92	74	-17.08	peak
7320.00	46.74	-0.82	45.92	54	-8.08	AVG

Remark: Factor = Antenna Factor + Cable Loss – Pre-amplifier.

CH High (2475MHz)  
Horizontal:

Frequency	Meter Reading	Factor	Emission Level	Limits	Margin	Detector Type
(MHz)	(dBµV)	(dB)	(dBµV/m)	(dBµV/m)	(dB)	
2475.00	98.91	-5.65	93.26	114	-20.74	peak
2475.00	91.99	-5.65	86.34	94	-7.66	AVG
4950.00	54.78	-3.43	51.35	74	-22.65	peak
4950.00	46.50	-3.43	43.07	54	-10.93	AVG
7425.00	55.94	-0.75	55.19	74	-18.81	peak
7425.00	46.52	-0.75	45.77	54	-8.23	AVG

Remark: Factor = Antenna Factor + Cable Loss – Pre-amplifier.

Vertical:

Frequency	Meter Reading	Factor	Emission Level	Limits	Margin	Detector Type
(MHz)	(dBµV)	(dB)	(dBµV/m)	(dBµV/m)	(dB)	
2475.00	97.25	-5.65	91.60	114	-22.40	peak
2475.00	91.00	-5.65	85.35	94	-8.65	AVG
4950.00	55.51	-3.43	52.08	74	-21.92	peak
4950.00	45.93	-3.43	42.50	54	-11.50	AVG
7425.00	56.76	-0.75	56.01	74	-17.99	peak
7425.00	46.08	-0.75	45.33	54	-8.67	AVG

Remark: Factor = Antenna Factor + Cable Loss – Pre-amplifier.

Remark:

- (1) Measuring frequencies from 9KHz to the 25 GHz.
- (2). All modes of GFSK were test at Low, Middle, and High channel, only the worst result of GFSK Low Channel was reported for below 1GHz test.
- (3). For BT above 1GHz test all modes of GFSK were test at Low, Middle, and High channel, only the worst result of GFSK Low Channel was reported.
- (4). By preliminary testing and verifying three axis (X, Y and Z) position of EUT transmitted status, it was found that “Z axis” position was the worst, and test data recorded in this report.
- (5). Radiated emission test from 9kHz to 10th harmonic of fundamental was verified, and no emission found except system noise floor in 9kHz to 30MHz and not recorded in this report.

## 8. BAND EDGE AND RF CONDUCTED SPURIOUS EMISSIONS

### 8.1 Block Diagram Of Test Setup

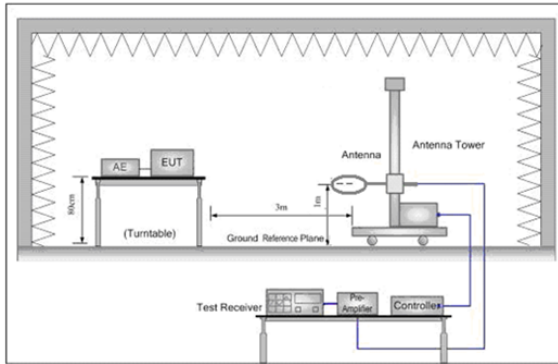


Figure 1. Below 30MHz

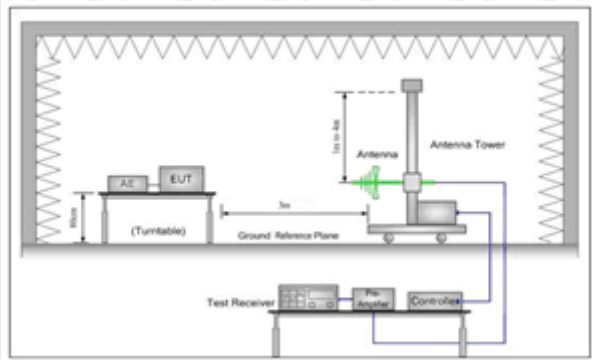
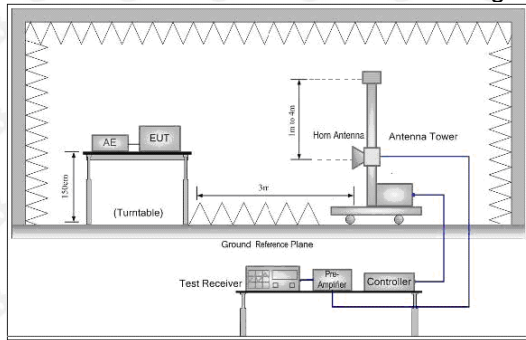


Figure 2. 30MHz to 1GHz



### 8.2 Limit

Spurious Emissions:

Frequency	Field strength (microvolt/meter)	Limit (dB $\mu$ V/m )	Remark	Measurement distance (m)
0.009MHz-0.490MHz	2400/F(kHz)	-	-	300
0.490MHz-1.705MHz	24000/F(kHz)	-	-	30
1.705MHz-30MHz	30	-	-	30
30MHz-88MHz	100	40.0	Quasi-peak	3
88MHz-216MHz	150	43.5	Quasi-peak	3
216MHz-960MHz	200	46.0	Quasi-peak	3
960MHz-1GHz	500	54.0	Quasi-peak	3
Above 1GHz	500	54.0	Average	3

Note: 15.35(b), Unless otherwise specified, the limit on peak radio frequency emissions is 20dB above the maximum permitted average emission limit applicable to the equipment under test. This peak limit applies to the total peak emission level radiated by the device.

8.3 Test procedure

- a.The EUT was placed on the top of a rotating table 0.8 meters above the ground at a 3 meter semi-anechoic chamber. The table was rotated 360 degrees to determine the position of the highest radiation.
- b.The EUT was set 3 meters away from the interference-receiving antenna, which was mounted on the top of a variable-height antenna tower.
- c.The antenna height is varied from one meter to four meters above the ground to determine the maximum value of the field strength. Both horizontal and vertical polarizations of the antenna are set to make the measurement.
- d.For each suspected emission, the EUT was arranged to its worst case and then the antenna was tuned to heights from 1 meter to 4 meters (for the test frequency of below 30MHz, the antenna was tuned to heights 1 meter) and the rota table table was turned from 0 degrees to 360 degrees to find the maximum reading.
- e.The test-receiver system was set to Peak Detect Function and Specified Bandwidth with Maximum Hold Mode.
- f.If the emission level of the EUT in peak mode was 10dB lower than the limit specified, then testing could be stopped and the peak values of the EUT would be reported. Otherwise the emissions that did not have 10dB margin would be re-tested one by one using peak, quasi-peak or average method as specified and then reported in a data sheet.

Frequency	Detector	RBW	VBW	Remark
2310MHz-2400MHz	peak	1MHz	3MHz	peak
2483.5MHz-2500MHz	peak	1MHz	3MHz	peak

## 8.4 Test Result

 CH Low:  
 Horizontal:

No.	Frequency	Reading	Correct	Result	Limit	Margin	Remark
	(MHz)	(dBuV/m)	Factor(dB/m)	(dBuV/m)	(dBuV/m)	(dB)	
1	2310.2068	30.15	-4.35	25.80	54	-28.20	peak
2	2344.0418	28.61	-4.30	24.30	54	-29.70	peak
3	2378.1116	27.86	-4.48	23.38	54	-30.62	peak
4	2389.8789	25.95	-4.94	21.00	54	-33.00	peak
5	2439.9639	26.62	-3.90	22.72	54	-31.28	peak

Vertical:

No.	Frequency	Reading	Correct	Result	Limit	Margin	Remark
	(MHz)	(dBuV/m)	Factor(dB/m)	(dBuV/m)	(dBuV/m)	(dB)	
1	2310.1567	28.50	-4.29	24.21	54	-29.79	peak
2	2344.0285	30.41	-4.29	26.12	54	-27.88	peak
3	2378.064	27.96	-4.47	23.49	54	-30.51	peak
4	2389.9901	26.09	-4.93	21.16	54	-32.84	peak
5	2440.0023	27.58	-3.92	23.66	54	-30.34	peak

 CH High:  
 Horizontal:

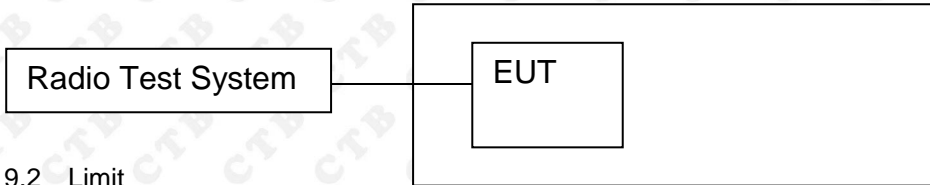
No.	Frequency	Reading	Correct	Result	Limit	Margin	Remark
	(MHz)	(dBuV/m)	Factor(dB/m)	(dBuV/m)	(dBuV/m)	(dB)	
1	2484.1899	30.47	-4.30	26.17	54	-27.83	peak
2	2488.9711	33.97	-4.33	29.64	54	-24.36	peak
3	2490.1897	32.18	-4.46	27.72	54	-26.28	peak
4	2493.5151	29.48	-4.91	24.57	54	-29.43	peak
5	2495.8799	28.62	-3.96	24.66	54	-29.34	peak

Vertical:

No.	Frequency	Reading	Correct	Result	Limit	Margin	Remark
	(MHz)	(dBuV/m)	Factor(dB/m)	(dBuV/m)	(dBuV/m)	(dB)	
1	2484.0152	30.86	-4.29	26.57	54	-27.43	peak
2	2489.069	31.72	-4.34	27.39	54	-26.61	peak
3	2490.4954	33.22	-4.44	28.78	54	-25.22	peak
4	2493.2883	30.49	-4.93	25.55	54	-28.45	peak
5	2495.9384	28.96	-3.94	25.02	54	-28.98	peak

## 9. BANDWIDTH TEST

### 9.1 Block Diagram Of Test Setup



### 9.2 Limit

FCC Part15 (15.249) , Subpart C			
Section	Test Item	Frequency Range (MHz)	Result
15.249	Bandwidth	2402-2483.5	PASS

### 9.3 Test procedure

1. Set resolution bandwidth (RBW) = 1-5% or DTS BW, not to exceed 100 kHz.
2. Set the video bandwidth (VBW)  $\geq 3 \times$  RBW.
3. Detector = Peak.
4. Trace mode = max hold.
5. Sweep = auto couple.
6. Allow the trace to stabilize.
7. Measure the maximum width of the emission that is constrained by the frequencies associated with the two outermost amplitude points (upper and lower) that are attenuated by 20 dB relative to the maximum level measured in the fundamental emission.

### 9.4 Test Result

Test Mode	Frequency (MHz)	20dB Bandwidth (MHz)	Result
GFSK	Low channel	1.255	PASS
	Mid channel	1.212	PASS
	High channel	1.249	PASS

Note: All modes of operation were Pre-scan and the worst-case emissions are reported.

Test Graph:

<p>GFSK Low channel</p>	<p>Agilent Spectrum Analyzer - Occupied BW</p> <p>Center Freq 2.405000000 GHz</p> <p>Center Freq: 2.405000000 GHz</p> <p>Trig: Free Run</p> <p>Avg Hold: 100/100</p> <p>Radio Std: None</p> <p>#IFGain:Low</p> <p>#Atten: 30 dB</p> <p>Radio Device: BTS</p> <p>Ref Offset 7.07 dB</p> <p>Ref 27.07 dBm</p> <p>10 dB/div</p> <p>Log</p> <p>Center 2.405 GHz</p> <p>#Res BW 30 kHz</p> <p>#VBW 100 kHz</p> <p>Span 3 MHz</p> <p>Sweep 3.2 ms</p> <p>Occupied Bandwidth 1.1674 MHz</p> <p>Total Power 5.76 dBm</p> <p>Transmit Freq Error 16.395 kHz</p> <p>OBW Power 99.00 %</p> <p>x dB Bandwidth 1.255 MHz</p> <p>x dB -20.00 dB</p>	
<p>GFSK Mid channel</p>	<p>Agilent Spectrum Analyzer - Occupied BW</p> <p>Center Freq 2.440000000 GHz</p> <p>Center Freq: 2.440000000 GHz</p> <p>Trig: Free Run</p> <p>Avg Hold: 100/100</p> <p>Radio Std: None</p> <p>#IFGain:Low</p> <p>#Atten: 30 dB</p> <p>Radio Device: BTS</p> <p>Ref Offset 7.13 dB</p> <p>Ref 27.13 dBm</p> <p>10 dB/div</p> <p>Log</p> <p>Center 2.44 GHz</p> <p>#Res BW 30 kHz</p> <p>#VBW 100 kHz</p> <p>Span 3 MHz</p> <p>Sweep 3.2 ms</p> <p>Occupied Bandwidth 1.1614 MHz</p> <p>Total Power 5.53 dBm</p> <p>Transmit Freq Error 10.690 kHz</p> <p>OBW Power 99.00 %</p> <p>x dB Bandwidth 1.212 MHz</p> <p>x dB -20.00 dB</p>	
<p>GFSK High channel</p>	<p>Agilent Spectrum Analyzer - Occupied BW</p> <p>Center Freq 2.475000000 GHz</p> <p>Center Freq: 2.475000000 GHz</p> <p>Trig: Free Run</p> <p>Avg Hold: 100/100</p> <p>Radio Std: None</p> <p>#IFGain:Low</p> <p>#Atten: 30 dB</p> <p>Radio Device: BTS</p> <p>Ref Offset 7.16 dB</p> <p>Ref 27.16 dBm</p> <p>10 dB/div</p> <p>Log</p> <p>Center 2.475 GHz</p> <p>#Res BW 30 kHz</p> <p>#VBW 100 kHz</p> <p>Span 3 MHz</p> <p>Sweep 3.2 ms</p> <p>Occupied Bandwidth 1.1612 MHz</p> <p>Total Power 4.99 dBm</p> <p>Transmit Freq Error 14.180 kHz</p> <p>OBW Power 99.00 %</p> <p>x dB Bandwidth 1.249 MHz</p> <p>x dB -20.00 dB</p>	



**10. ANTENNA REQUIREMENT**

15.203 requirement:

An intentional radiator shall be designed to ensure that no antenna other than that furnished by the responsible party shall be used with the device. The use of a permanently attached antenna or of an antenna that uses a unique coupling to the intentional radiator, the manufacturer may design the unit so that a broken antenna can be replaced by the user, but the use of a standard antenna jack or electrical connector is prohibited.

15.247(b) (4) requirement:

The conducted output power limit specified in paragraph (b) of this section is based on the use of antennas with directional gains that do not exceed 6 dBi. Except as shown in paragraph (c) of this section, if transmitting antennas of directional gain greater than 6 dBi are used, the conducted output power from the intentional radiator shall be reduced below the stated values in paragraphs (b)(1), (b)(2), and (b)(3) of this section, as appropriate, by the amount in dB that the directional gain of the antenna exceeds 6 dBi.

**EUT Antenna:**

The antenna is Interna Antenna. The best case gain of the antenna is 0.17dBi.

## 11. EUT PHOTOGRAPHS

### External Photos EUT Photo 1



### EUT Photo 2



EUT Photo 3



EUT Photo 4



EUT Photo 5



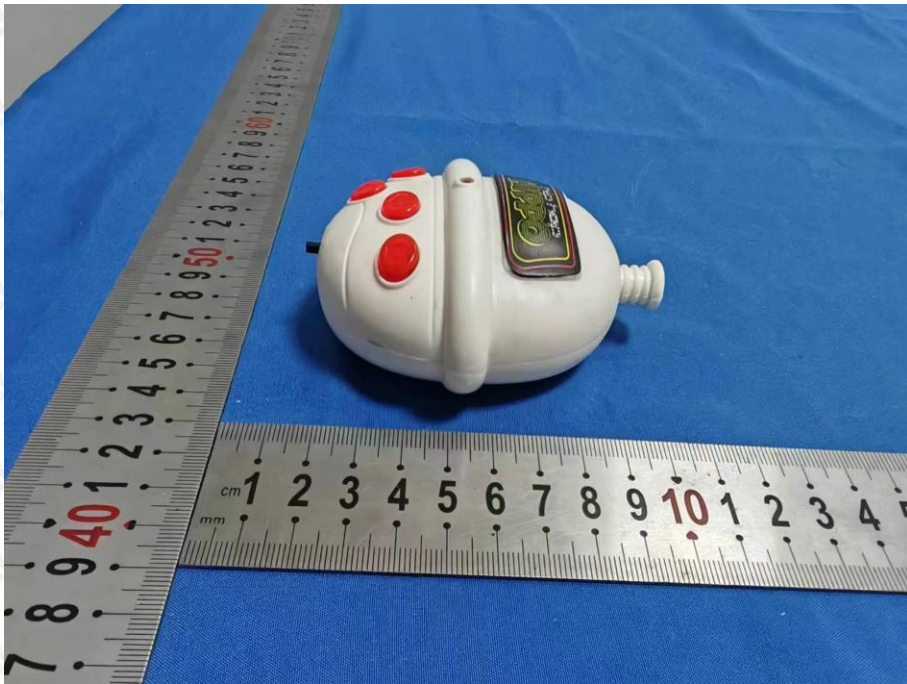
EUT Photo 6



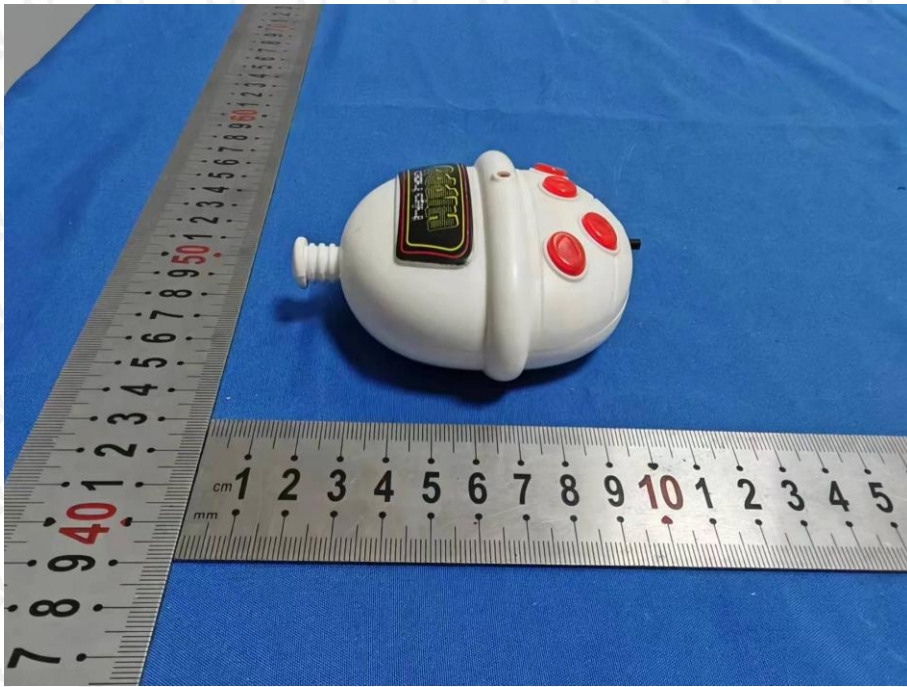
EUT Photo 7



EUT Photo 8

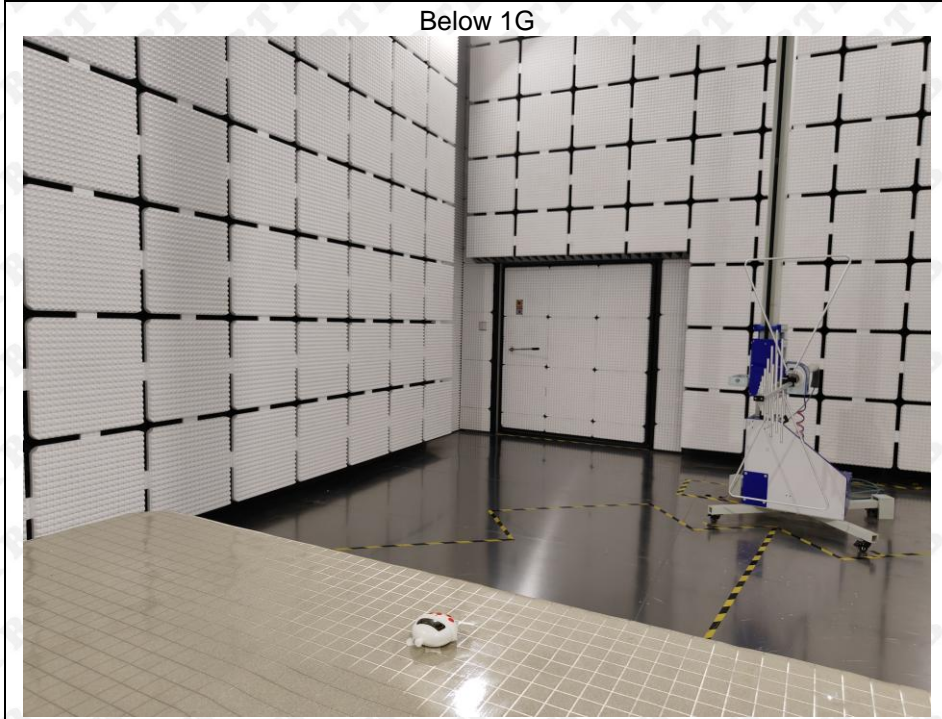


EUT Photo 8



## 12. EUT TEST SETUP PHOTOGRAPHS

### Radiated Emissions



\*\*\*\*\* END OF REPORT \*\*\*\*\*