

FCC SAR EVALUATION REPORT

**In accordance with the requirements of
FCC 47 CFR Part 2(2.1093), ANSI/IEEE C95.1-1992 and
IEEE Std 1528-2013**

Product Name : 3G MOBILE PHONE

Trademark : GEOTEL, HX, HUAXIA, BLULORY

Model Name : S8

Serial Model : A9, S7, J8 pro, J7 pro, J7 prime, S8 edge, A3,
NOTE

Report No. : SER171103801001E

FCC ID : 2ANR9-S8

Prepared for

MEITU ELECTRONICS LIMITED

FLAT A&B, 2/F, GEMFAIR COMMERCIAL BUILDING, NO:555-557

CANTON KLN, HK

Prepared by

Shenzhen NTEK Testing Technology Co., Ltd.

1/F, Building E, Fenda Science Park, Sanwei Community, Xixiang Street,

Bao'an District, Shenzhen 518126 P.R. China.

Tel.: +86-755-6115 6588 Fax.: +86-755-6115 6599

Website: <http://www.ntek.org.cn>

TEST RESULT CERTIFICATION

Applicant's name: MEITU ELECTRONICS LIMITED
Address.....: FLAT A&B, 2/F, GEMFAIR COMMERCIAL BUILDING, NO:555-557
CANTON KLN, HK
Manufacturer's Name.....: HUI ZHONG Electronic Technology co.,Ltd. Of Dongguan city
Address.....: 2F of Building,No.9, Lihe Street Liheng Village Committee, Qingxi
Town, Dongguan City

Product description

Product name.....: 3G MOBILE PHONE
Trademark: GEOTEL, HX, HUAXIA, BLULORY
Model and/or type reference .: S8
Serial Model: A9, S7, J8 pro, J7 pro, J7 prime, S8 edge, A3, NOTE
FCC 47 CFR Part 2(2.1093)
ANSI/IEEE C95.1-1992
Standards: IEEE Std 1528-2013
Published RF exposure KDB procedures

This device described above has been tested by NTEK. In accordance with the measurement methods and procedures specified in IEEE Std 1528-2013 and KDB 865664 D01. Testing has shown that this device is capable of compliance with localized specific absorption rate (SAR) specified in FCC 47 CFR Part 2(2.1093) and ANSI/IEEE C95.1-1992. The test results in this report apply only to the tested sample of the stated device/equipment. Other similar device/equipment will not necessarily produce the same results due to production tolerance and measurement uncertainties.

This report shall not be reproduced except in full, without the written approval of NTEK, this document may be altered or revised by NTEK, personal only, and shall be noted in the revision of the document.

Date of Test

Date (s) of performance of tests: Nov. 06, 2017 ~ Nov. 17, 2017
Date of Issue: Dec. 01, 2017
Test Result.....: **Pass**

Prepared By : Cheng Jiawen
(Test Engineer) (Cheng Jiawen)

Approved By : Sam. Chen
(Lab Manager) (Sam Chen)

※ ※ Revision History ※ ※

REV.	DESCRIPTION	ISSUED DATE	REMARK
Rev.1.0	Initial Test Report Release	Dec. 01, 2017	Cheng Jiawen

TABLE OF CONTENTS

1. General Information	6
1.1. RF exposure limits	6
1.2. Statement of Compliance.....	7
1.3. EUT Description	8
1.4. Test specification(s)	9
1.5. Ambient Condition	9
2. SAR Measurement System	10
2.1. SATIMO SAR Measurement Set-up Diagram	10
2.2. Robot	11
2.3. E-Field Probe	12
2.3.1. E-Field Probe Calibration.....	12
2.4. SAM phantoms	13
2.4.1. Technical Data	13
2.5. Device Holder	15
2.6. Test Equipment List	16
3. SAR Measurement Procedures	18
3.1. Power Reference.....	18
3.2. Area scan & Zoom scan	18
3.3. Description of interpolation/extrapolation scheme	20
3.4. Volumetric Scan	20
3.5. Power Drift	20
4. System Verification Procedure.....	21
4.1. Tissue Verification.....	21
4.1.1. Tissue Dielectric Parameter Check Results	22
4.2. System Verification Procedure	23
4.2.1. System Verification Results	24
5. SAR Measurement variability and uncertainty	25
5.1. SAR measurement variability	25
5.2. SAR measurement uncertainty.....	25
6. RF Exposure Positions	26
6.1. Ear and handset reference point.....	26
6.2. Definition of the cheek position	26
6.3. Definition of the tilt position.....	28
6.4. Body Worn Accessory	28
6.5. Wireless Router Devices.....	29
7. RF Output Power	30
7.1. Maximum Tune-up Limit	30
7.2. GSM Conducted Power	31
7.3. WCDMA Conducted Power.....	31

7.4. WLAN & Bluetooth Output Power	34
7.4.1. Output Power Results Of WLAN	34
7.4.2. Output Power Results Of Bluetooth	34
8. Antenna Location.....	35
9. Stand-alone SAR test exclusion	36
10. SAR Results	37
10.1. SAR measurement results	37
10.1.1. SAR measurement Result of GSM850.....	38
10.1.2. SAR measurement Result of GSM1900.....	39
10.1.3. SAR measurement Result of WCDMA Band V.....	40
10.1.4. SAR measurement Result of WCDMA Band II.....	41
10.1.5. SAR measurement Result of WLAN 2.4G.....	42
10.2. Simultaneous Transmission Possibilities.....	43
10.3. SAR Summation Scenario	44
11. Appendix A. Photo documentation.....	48
12. Appendix B. System Check Plots	54
13. Appendix C. Plots of High SAR Measurement	61
14. Appendix D. Calibration Certificate.....	72

1. General Information

1.1. RF exposure limits

(A).Limits for Occupational/Controlled Exposure (W/kg)

Whole-Body	Partial-Body	Hands, Wrists, Feet and Ankles
0.4	8.0	20.0

(B).Limits for General Population/Uncontrolled Exposure (W/kg)

Whole-Body	Partial-Body	Hands, Wrists, Feet and Ankles
0.08	1.6	4.0

NOTE: **Whole-Body SAR** is averaged over the entire body, **partial-body SAR** is averaged over any 1 gram of tissue defined as a tissue volume in the shape of a cube. **SAR for hands, wrists, feet and ankles** is averaged over any 10 grams of tissue defined as a tissue volume in the shape of a cube.

Occupational/Controlled Environments:

Are defined as locations where there is exposure that may be incurred by people who are aware of the potential for exposure, (i.e. as a result of employment or occupation).

General Population/Uncontrolled Environments:

Are defined as locations where there is the exposure of individuals who have no knowledge or control of their exposure.

NOTE
HEAD AND TRUNK LIMIT
1.6 W/kg
APPLIED TO THIS EUT

1.2. Statement of Compliance

The maximum results of Specific Absorption Rate (SAR) found during testing for S8 are as follows.

Band	Max Reported SAR Value(W/kg)			Max. SAR Summation
	1-g Head	1-g Body-Worn (Separation distance of 10mm)	1-g Hot spot (Separation distance of 10mm)	
GSM 850	0.196	0.463	0.463	1.128
GSM 1900	0.032	0.892	0.892	
WCDMA Band V	0.114	0.227	0.227	
WCDMA Band II	0.047	0.148	0.148	
WLAN 2.4G	0.130	0.236	0.236	

NOTE: The Max. SAR Summation is calculated based on the same configuration and test position. This device is in compliance with Specific Absorption Rate (SAR) for general population/uncontrolled exposure limits (1.6 W/kg) specified in FCC 47 CFR Part 2(2.1093) and ANSI/IEEE C95.1-1992, and had been tested in accordance with the measurement methods and procedures specified in IEEE Std 1528-2013 & KDB 865664 D01.

1.3. EUT Description

Device Information			
Product Name	3G MOBILE PHONE		
Trade Name	GEOTEL, HX, HUAXIA, BLULORY		
Model Name	S8		
Serial Model	A9, S7, J8 pro, J7 pro, J7 prime, S8 edge, A3, NOTE		
FCC ID	2ANR9-S8		
Device Phase	Identical Prototype		
Exposure Category	General population / Uncontrolled environment		
Antenna	FPCB Antenna		
Battery Information	DC 3.8V, 2450mAh		
Device Operating Configurations			
Supporting Mode(s)	GSM 850/1900, WCDMA Band V/II, WLAN 2.4G, Bluetooth		
Test Modulation	GSM(GMSK), WCDMA(QPSK), WLAN(DSSS/OFDM), Bluetooth(GFSK, $\pi/4$ -DQPSK, 8DPSK)		
Device Class	B		
Operating Frequency Range(s)	Band	Tx (MHz)	Rx (MHz)
	GSM 850	824-849	869-894
	GSM 1900	1850-1910	1930-1990
	WCDMA Band V	824-849	869-894
	WCDMA Band II	1850-1910	1930-1990
	WLAN 2.4G	2412-2462	
	Bluetooth	2402-2480	
GPRS Multislot Class(12)	Max Number of Timeslots in Uplink		4
	Max Number of Timeslots in Downlink		4
	Max Total Timeslot		5
HSDPA UE Category	14		
HSUPA UE Category	6		
Power Class	4, tested with power level 5(GSM 850)		
	1, tested with power level 0(GSM 1900)		
	3, tested with power control “all 1”(WCDMA Band V)		
	3, tested with power control “all 1”(WCDMA Band II)		
Test Channels (low-mid-high)	128-189-251(GSM 850)		
	512-661-810(GSM 1900)		
	4132-4182-4233(WCDMA Band V)		
	9262-9400-9538(WCDMA Band II)		
	802.11 b/g/n:1-6-11(WLAN 2.4G)		

1.4. Test specification(s)

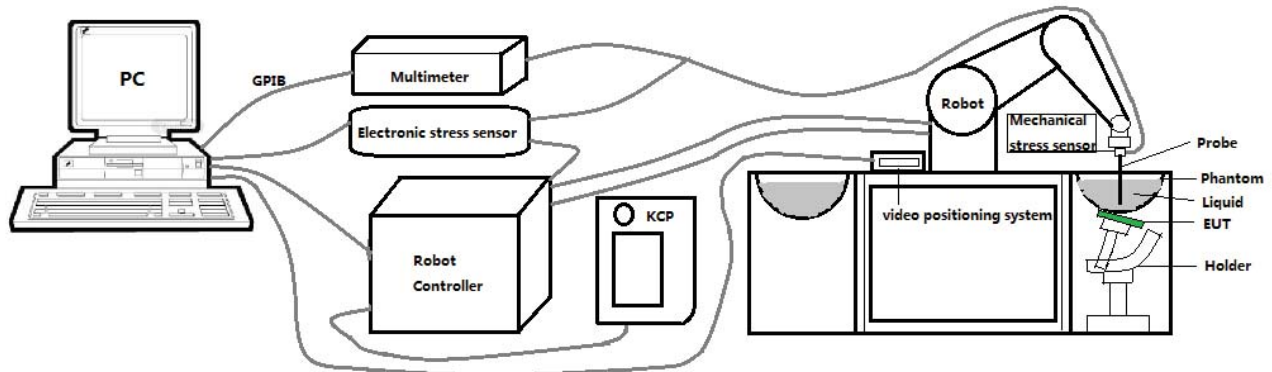
FCC 47 CFR Part 2(2.1093)
ANSI/IEEE C95.1-1992
IEEE Std 1528-2013
KDB 865664 D01 SAR measurement 100 MHz to 6 GHz
KDB 865664 D02 RF Exposure Reporting
KDB 447498 D01 General RF Exposure Guidance
KDB 248227 D01 802.11 Wi-Fi SAR
KDB 941225 D01 3G SAR Procedures
KDB 941225 D06 Hotspot SAR
KDB 648474 D04 Handset SAR

1.5. Ambient Condition

Ambient temperature	20°C – 24°C
Relative Humidity	30% – 70%

2. SAR Measurement System

2.1. SATIMO SAR Measurement Set-up Diagram



These measurements were performed with the automated near-field scanning system OPENSAR from SATIMO. The system is based on a high precision robot (working range: 901 mm), which positions the probes with a positional repeatability of better than ± 0.03 mm. The SAR measurements were conducted with dosimetric probe (manufactured by SATIMO), designed in the classical triangular configuration and optimized for dosimetric evaluation.

The first step of the field measurement is the evaluation of the voltages induced on the probe by the device under test. Probe diode detectors are nonlinear. Below the diode compression point, the output voltage is proportional to the square of the applied E-field; above the diode compression point, it is linear to the applied E-field. The compression point depends on the diode, and a calibration procedure is necessary for each sensor of the probe.

The Keithley multimeter reads the voltage of each sensor and send these three values to the PC. The corresponding E field value is calculated using the probe calibration factors, which are stored in the working directory. This evaluation includes linearization of the diode characteristics. The field calculation is done separately for each sensor. Each component of the E field is displayed on the "Dipole Area Scan Interface" and the total E field is displayed on the "3D Interface"

2.2. Robot

The SATIMO SAR system uses the high precision robots from KUKA. For the 6-axis controller system, the robot controller version (KUKA) from KUKA is used. The KUKA robot series have many features that are important for our application:



- High precision (repeatability ± 0.03 mm)
- High reliability (industrial design)
- Jerk-free straight movements
- Low ELF interference (the closed metallic construction shields against motor control fields)

2.3. E-Field Probe

This E-field detection probe is composed of three orthogonal dipoles linked to special Schottky diodes with low detection thresholds. The probe allows the measurement of electric fields in liquids such as the one defined in the IEEE and CENELEC standards.

For the measurements the Specific Dosimetric E-Field Probe SN 08/16 EPGO287 with following specifications is used



- Dynamic range: 0.01-100 W/kg
 - Tip Diameter : 2.5 mm
 - Distance between probe tip and sensor center: 1 mm
 - Distance between sensor center and the inner phantom surface: 2 mm (repeatability better than ± 1 mm).
 - Probe linearity: ± 0.08 dB
 - Axial isotropy: < 0.25 dB
 - Hemispherical Isotropy: < 0.50 dB
 - Calibration range: 650MHz to 5900MHz for head & body simulating liquid.
 - Lower detection limit: 7mW/kg
- Angle between probe axis (evaluation axis) and surface normal line: less than 30° .

2.3.1. E-Field Probe Calibration

Each probe needs to be calibrated according to a dosimetric assessment procedure with accuracy better than $\pm 10\%$. The spherical isotropy shall be evaluated and within ± 0.25 dB. The sensitivity parameters (Norm X, Norm Y, and Norm Z), the diode compression parameter (DCP) and the conversion factor (Conv F) of the probe are tested. The calibration data can be referred to appendix D of this report.

2.4. SAM phantoms

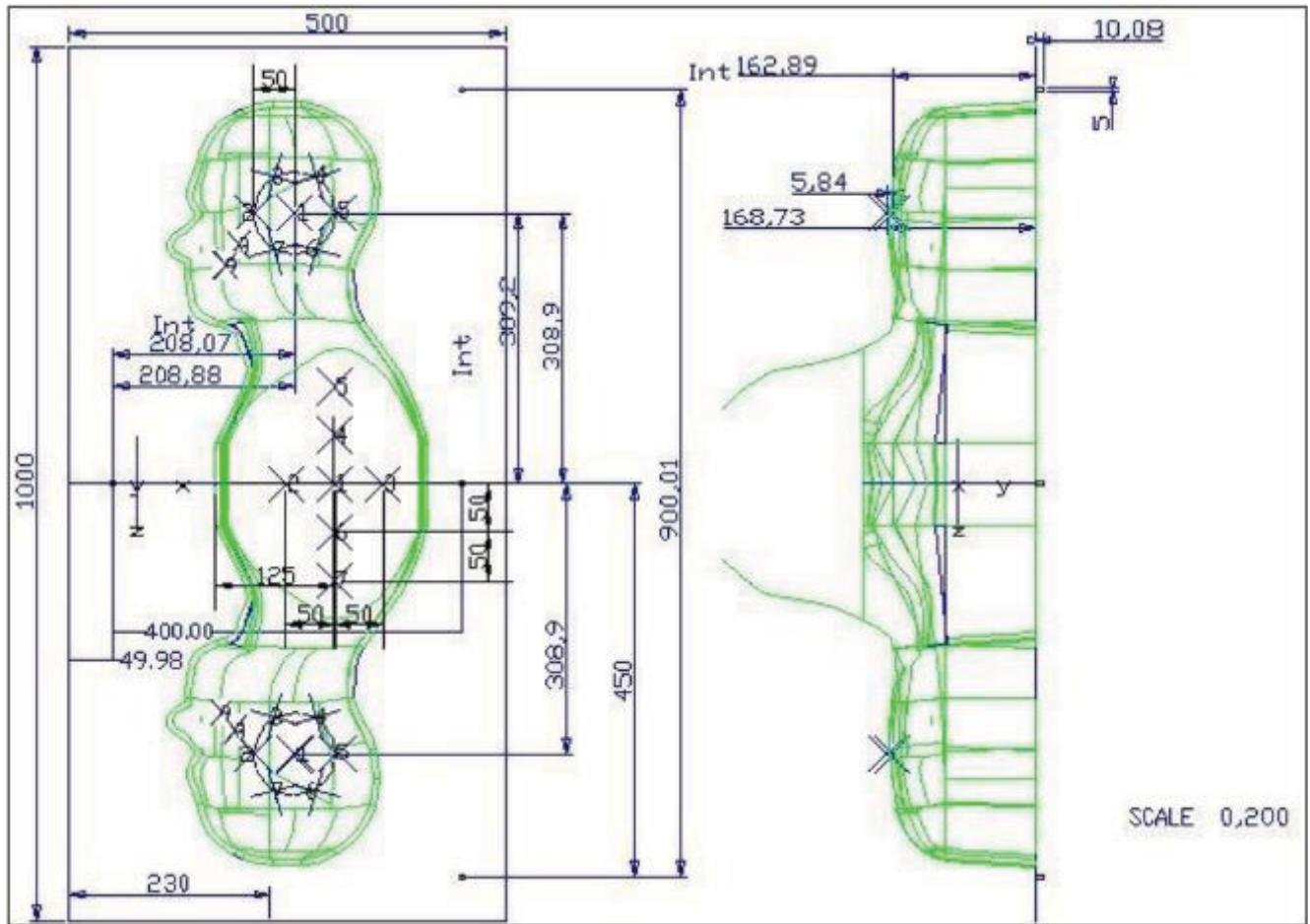
Photo of SAM phantom SN 16/15 SAM119



The SAM phantom is used to measure the SAR relative to people exposed to electro-magnetic field radiated by mobile phones.

2.4.1. Technical Data

Serial Number	Shell thickness	Filling volume	Dimensions	Positionner Material	Permittivity	Loss Tangent
SN 16/15 SAM119	2 mm \pm 0.2 mm	27 liters	Length:1000 mm Width:500 mm Height:200 mm	Gelcoat with fiberglass	3.4	0.02

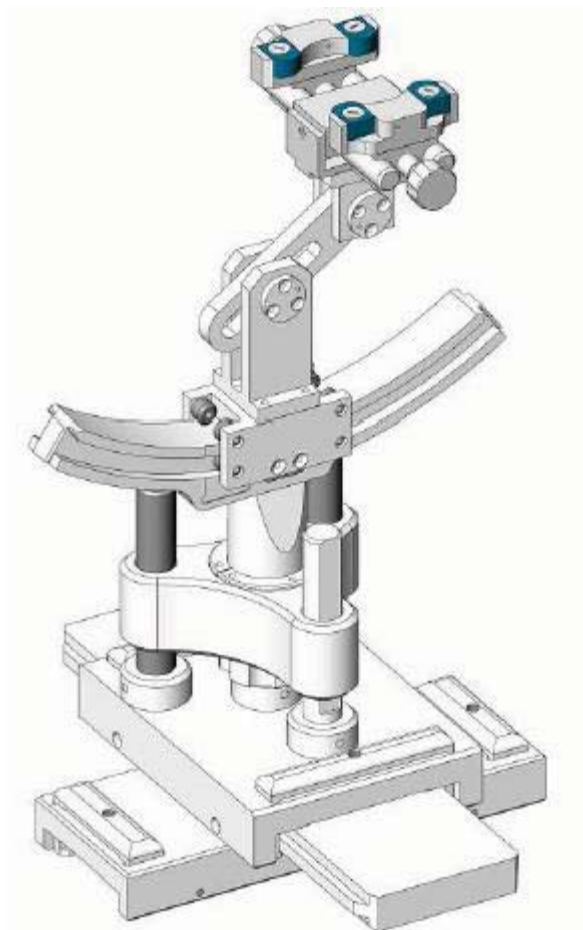


Serial Number	Left Head		Right Head		Flat Part	
SN 16/15 SAM119	2	2.02	2	2.08	1	2.09
	3	2.05	3	2.06	2	2.06
	4	2.07	4	2.07	3	2.08
	5	2.08	5	2.08	4	2.10
	6	2.05	6	2.07	5	2.10
	7	2.05	7	2.05	6	2.07
	8	2.07	8	2.06	7	2.07
	9	2.08	9	2.06	-	-

The test, based on ultrasonic system, allows measuring the thickness with an accuracy of 10 µm.

2.5. Device Holder

The positioning system allows obtaining cheek and tilting position with a very good accuracy. In compliance with CENELEC, the tilt angle uncertainty is lower than 1 degree.



Serial Number	Holder Material	Permittivity	Loss Tangent
SN 16/15 MSH100	Delrin	3.7	0.005

2.6. Test Equipment List

This table gives a complete overview of the SAR measurement equipment.

Devices used during the test described are marked ☒

	Manufacturer	Name of Equipment	Type/Model	Serial Number	Calibration	
					Last Cal.	Due Date
<input checked="" type="checkbox"/>	MVG	E FIELD PROBE	SSE2	SN 08/16 EPGO287	Sep. 18, 2017	Sep. 17, 2018
<input type="checkbox"/>	MVG	450 MHz Dipole	SID450	SN 03/15 DIP 0G450-345	Apr. 06, 2015	Apr. 05, 2018
<input type="checkbox"/>	MVG	750 MHz Dipole	SID750	SN 03/15 DIP 0G750-355	Apr. 06, 2015	Apr. 05, 2018
<input checked="" type="checkbox"/>	MVG	835 MHz Dipole	SID835	SN 03/15 DIP 0G835-347	Apr. 06, 2015	Apr. 05, 2018
<input type="checkbox"/>	MVG	900 MHz Dipole	SID900	SN 03/15 DIP 0G900-348	Apr. 06, 2015	Apr. 05, 2018
<input type="checkbox"/>	MVG	1800 MHz Dipole	SID1800	SN 03/15 DIP 1G800-349	Apr. 06, 2015	Apr. 05, 2018
<input checked="" type="checkbox"/>	MVG	1900 MHz Dipole	SID1900	SN 03/15 DIP 1G900-350	Apr. 06, 2015	Apr. 05, 2018
<input type="checkbox"/>	MVG	2000 MHz Dipole	SID2000	SN 03/15 DIP 2G000-351	Apr. 06, 2015	Apr. 05, 2018
<input checked="" type="checkbox"/>	MVG	2450 MHz Dipole	SID2450	SN 03/15 DIP 2G450-352	Apr. 06, 2015	Apr. 05, 2018
<input type="checkbox"/>	MVG	2600 MHz Dipole	SID2600	SN 03/15 DIP 2G600-356	Apr. 06, 2015	Apr. 05, 2018
<input type="checkbox"/>	MVG	5000 MHz Dipole	SWG5500	SN 13/14 WGA 33	Apr. 06, 2015	Apr. 05, 2018
<input checked="" type="checkbox"/>	MVG	Liquid measurement Kit	SCLMP	SN 21/15 OCPG 72	NCR	NCR
<input checked="" type="checkbox"/>	MVG	Power Amplifier	N.A	AMPLISAR_28/14_003	NCR	NCR
<input checked="" type="checkbox"/>	KEITHLEY	Millivoltmeter	2000	4072790	NCR	NCR
<input checked="" type="checkbox"/>	R&S	Universal radio communication tester	CMU200	117858	Aug. 07, 2017	Aug. 06, 2018
<input type="checkbox"/>	R&S	Wideband radio communication tester	CMW500	103917	Oct. 26, 2017	Oct. 25, 2018
<input checked="" type="checkbox"/>	HP	Network Analyzer	8753D	3410J01136	Aug. 07, 2017	Aug. 06, 2018

<input checked="" type="checkbox"/>	Agilent	PSG Analog Signal Generator	E8257D	MY51110112	Aug. 07, 2017	Aug. 06, 2018
<input checked="" type="checkbox"/>	Agilent	Power meter	E4419B	MY45102538	Aug. 07, 2017	Aug. 06, 2018
<input checked="" type="checkbox"/>	Agilent	Power sensor	E9301A	MY41495644	Aug. 07, 2017	Aug. 06, 2018
<input checked="" type="checkbox"/>	Agilent	Power sensor	E9301A	US39212148	Aug. 07, 2017	Aug. 06, 2018
<input checked="" type="checkbox"/>	MCLI/USA	Directional Coupler	CB11-20	0D2L51502	Aug. 07, 2017	Aug. 06, 2018

3. SAR Measurement Procedures

The measurement procedures are as follows:

<Conducted power measurement>

- (a) For WWAN power measurement, use base station simulator to configure EUT WWAN transmission in conducted connection with RF cable, at maximum power in each supported wireless interface and frequency band.
- (b) Read the WWAN RF power level from the base station simulator.
- (c) For Wi-Fi/BT power measurement, use engineering software to configure EUT Wi-Fi/BT continuously transmission, at maximum RF power in each supported wireless interface and frequency band.
- (d) Connect EUT RF port through RF cable to the power meter, and measure Wi-Fi/BT output power.

<SAR measurement>

- (a) Use base station simulator to configure EUT WWAN transmission in radiated connection, and engineering software to configure EUT Wi-Fi/BT continuously transmission, at maximum RF power, in the highest power channel.
- (b) Place the EUT in the positions as Appendix A demonstrates.
- (c) Set scan area, grid size and other setting on the OPENSAR software.
- (d) Measure SAR results for the highest power channel on each testing position.
- (e) Find out the largest SAR result on these testing positions of each band.
- (f) Measure SAR results for other channels in worst SAR testing position if the reported SAR of highest power channel is larger than 0.8 W/kg.

According to the test standard, the recommended procedure for assessing the peak spatial-average SAR value consists of the following steps:

- (a) Power reference measurement
- (b) Area scan
- (c) Zoom scan
- (d) Power drift measurement

3.1. Power Reference

The Power Reference Measurement and Power Drift Measurements are for monitoring the power drift of the device under test in the batch process. The minimum distance of probe sensors to surface determines the closest measurement point to phantom surface. This distance cannot be smaller than the distance of sensor calibration points to probe tip as defined in the probe properties.

3.2. Area scan & Zoom scan

The area scan is a 2D scan to find the hot spot location on the DUT. The zoom scan is a 3D scan above the hot spot to calculate the 1g and 10g SAR value.

Measurement of the SAR distribution with a grid of 8 to 16 mm * 8 to 16 mm and a constant distance to

the inner surface of the phantom. Since the sensors cannot directly measure at the inner phantom surface, the values between the sensors and the inner phantom surface are extrapolated. With these values the area of the maximum SAR is calculated by an interpolation scheme. Around this point, a cube of 30 * 30 * 30 mm or 32 * 32 * 32 mm is assessed by measuring 5 or 8 * 5 or 8 * 4 or 5 mm. With these data, the peak spatial-average SAR value can be calculated.

From the scanned SAR distribution, identify the position of the maximum SAR value, in addition identify the positions of any local maxima with SAR values within 2 dB of the maximum value that will not be within the zoom scan of other peaks; additional peaks shall be measured only when the primary peak is within 2 dB of the SAR compliance limit (e.g., 1 W/kg for 1,6 W/kg 1 g limit, or 1,26 W/kg for 2 W/kg, 10 g limit).

Area scan & Zoom scan scan parameters extracted from FCC KDB 865664 D01 SAR measurement 100 MHz to 6 GHz.

			≤ 3 GHz	> 3 GHz
Maximum distance from closest measurement point (geometric center of probe sensors) to phantom surface			5 ± 1 mm	$\frac{1}{2} \cdot \delta \cdot \ln(2) \pm 0.5$ mm
Maximum probe angle from probe axis to phantom surface normal at the measurement location			$30^\circ \pm 1^\circ$	$20^\circ \pm 1^\circ$
Maximum area scan spatial resolution: Δx_{Area} , Δy_{Area}			≤ 2 GHz: ≤ 15 mm 2 – 3 GHz: ≤ 12 mm	3 – 4 GHz: ≤ 12 mm 4 – 6 GHz: ≤ 10 mm
			When the x or y dimension of the test device, in the measurement plane orientation, is smaller than the above, the measurement resolution must be \leq the corresponding x or y dimension of the test device with at least one measurement point on the test device.	
Maximum zoom scan spatial resolution: Δx_{Zoom} , Δy_{Zoom}			≤ 2 GHz: ≤ 8 mm 2 – 3 GHz: ≤ 5 mm*	3 – 4 GHz: ≤ 5 mm* 4 – 6 GHz: ≤ 4 mm*
Maximum zoom scan spatial resolution, normal to phantom surface	uniform grid: $\Delta z_{Zoom}(n)$		≤ 5 mm	3 – 4 GHz: ≤ 4 mm 4 – 5 GHz: ≤ 3 mm 5 – 6 GHz: ≤ 2 mm
	graded grid	$\Delta z_{Zoom}(1)$: between 1 st two points closest to phantom surface	≤ 4 mm	3 – 4 GHz: ≤ 3 mm 4 – 5 GHz: ≤ 2.5 mm 5 – 6 GHz: ≤ 2 mm
		$\Delta z_{Zoom}(n>1)$: between subsequent points	$\leq 1.5 \cdot \Delta z_{Zoom}(n-1)$	
Minimum zoom scan volume	x, y, z		≥ 30 mm	3 – 4 GHz: ≥ 28 mm 4 – 5 GHz: ≥ 25 mm 5 – 6 GHz: ≥ 22 mm

Note: δ is the penetration depth of a plane-wave at normal incidence to the tissue medium; see draft standard IEEE P1528-2011 for details.

* When zoom scan is required and the *reported* SAR from the *area scan based 1-g SAR estimation* procedures of KDB 447498 is ≤ 1.4 W/kg, ≤ 8 mm, ≤ 7 mm and ≤ 5 mm zoom scan resolution may be applied, respectively, for 2 GHz to 3 GHz, 3 GHz to 4 GHz and 4 GHz to 6 GHz.

3.3. Description of interpolation/extrapolation scheme

The local SAR inside the phantom is measured using small dipole sensing elements inside a probe body. The probe tip must not be in contact with the phantom surface in order to minimise measurements errors, but the highest local SAR will occur at the surface of the phantom.

An extrapolation is used to determine this highest local SAR values. The extrapolation is based on a fourth-order least-square polynomial fit of measured data. The local SAR value is then extrapolated from the liquid surface with a 1 mm step.

The measurements have to be performed over a limited time (due to the duration of the battery) so the step of measurement is high. It could vary between 5 and 8 mm. To obtain an accurate assessment of the maximum SAR averaged over 10 grams and 1 gram requires a very fine resolution in the three dimensional scanned data array.

3.4. Volumetric Scan

The volumetric scan consists to a full 3D scan over a specific area. This 3D scan is useful for multi Tx SAR measurement. Indeed, it is possible with OpenSAR to add, point by point, several volumetric scan to calculate the SAR value of the combined measurement as it is defined in the standard IEEE1528 and IEC62209.

3.5. Power Drift

All SAR testing is under the EUT install full charged battery and transmit maximum output power. In OpenSAR measurement software, the power reference measurement and power drift measurement procedures are used for monitoring the power drift of EUT during SAR test. Both these procedures measure the field at a specified reference position before and after the SAR testing. The software will calculate the field difference in V/m. If the power drifts more than $\pm 5\%$, the SAR will be retested.

4. System Verification Procedure

4.1. Tissue Verification

The following tissue formulations are provided for reference only as some of the parameters have not been thoroughly verified. The composition of ingredients may be modified accordingly to achieve the desired target tissue parameters required for routine SAR evaluation.

Ingredients (% of weight)	Head Tissue							
Frequency Band (MHz)	750	835	900	1800	1900	2000	2450	2600
Water	34.40	34.40	34.40	55.36	55.36	57.87	57.87	57.87
NaCl	0.79	0.79	0.79	0.35	0.35	0.16	0.16	0.16
1,2-Propanediol	64.81	64.81	64.81	0.00	0.00	0.00	0.00	0.00
Triton X-100	0.00	0.00	0.00	30.45	30.45	19.97	19.97	19.97
DGBE	0.00	0.00	0.00	13.84	13.84	22.00	22.00	22.00
Ingredients (% of weight)	Body Tissue							
Frequency Band (MHz)	750	835	900	1800	1900	2000	2450	2600
Water	50.30	50.30	50.30	69.91	69.91	71.88	71.88	71.88
NaCl	0.60	0.60	0.60	0.13	0.13	0.16	0.16	0.16
1,2-Propanediol	49.10	49.10	49.10	0.00	0.00	0.00	0.00	0.00
Triton X-100	0.00	0.00	0.00	9.99	9.99	19.97	19.97	19.97
DGBE	0.00	0.00	0.00	19.97	19.97	7.99	7.99	7.99

4.1.1. Tissue Dielectric Parameter Check Results

The simulating liquids should be checked at the beginning of a series of SAR measurements to determine if the dielectric parameters are within the tolerances of the specified target values. The measured conductivity and relative permittivity should be within $\pm 5\%$ of the target values.

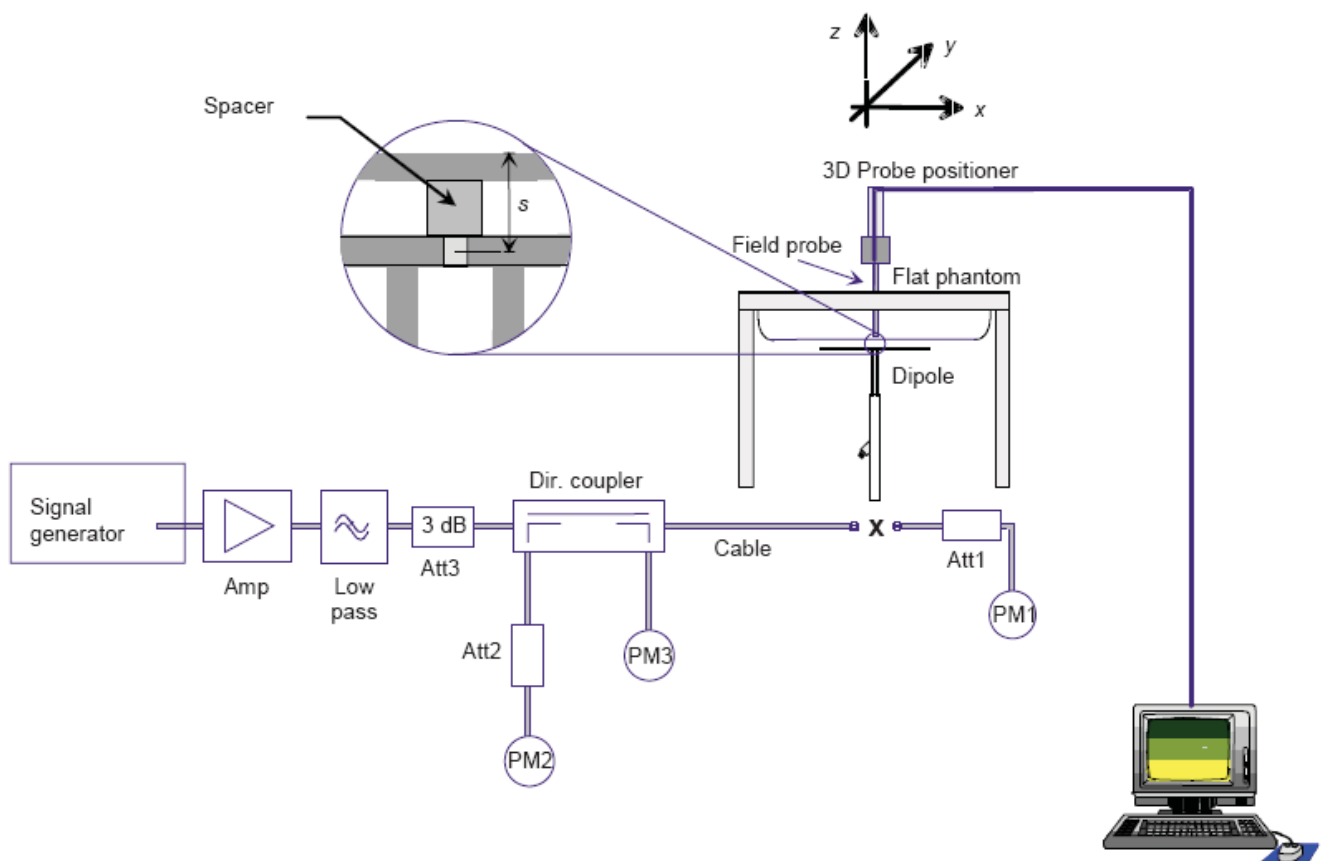
Tissue Type	Measured Frequency (MHz)	Target Tissue		Measured Tissue		Liquid Temp.	Test Date
		$\epsilon_r (\pm 5\%)$	σ (S/m) ($\pm 5\%$)	ϵ_r	σ (S/m)		
Head 850	835	41.50 (39.43~43.57)	0.90 (0.86~0.94)	42.85	0.89	21.6 °C	Nov. 17, 2017
Body 850	835	55.20 (52.44~57.96)	0.97 (0.92~1.01)	55.23	0.99	21.4 °C	Nov. 16, 2017
Head 1900	1900	40.00 (38.00~42.00)	1.40 (1.33~1.47)	39.40	1.43	21.5 °C	Nov. 06, 2017
Body 1900	1900	53.30 (50.64~55.96)	1.52 (1.44~1.59)	53.41	1.56	21.3 °C	Nov. 07, 2017
Head 2450	2450	39.20 (37.24~41.16)	1.80 (1.71~1.89)	39.42	1.78	21.1 °C	Nov. 09, 2017
Body 2450	2450	52.70 (50.07~55.33)	1.95 (1.85~2.04)	52.28	1.96	21.4 °C	Nov. 10, 2017

NOTE: The dielectric parameters of the tissue-equivalent liquid should be measured under similar ambient conditions and within 2 °C of the conditions expected during the SAR evaluation to satisfy protocol requirements.

4.2. System Verification Procedure

The system verification is performed for verifying the accuracy of the complete measurement system and performance of the software. The dipole is connected to the signal source consisting of signal generator and amplifier via a directional coupler, N-connector cable and adaption to SMA. It is fed with a power of 100mW (below 5GHz) or 100mW (above 5GHz). To adjust this power a power meter is used. The power sensor is connected to the cable before the system verification to measure the power at this point and do adjustments at the signal generator. At the outputs of the directional coupler both return loss as well as forward power are controlled during the system verification to make sure that emitted power at the dipole is kept constant. This can also be checked by the power drift measurement after the test (result on plot).

The system verification is shown as below picture:



4.2.1. System Verification Results

Comparing to the original SAR value provided by SATIMO, the verification data should be within its specification of $\pm 10\%$. Below table shows the target SAR and measured SAR after normalized to 1W input power. The table below indicates the system performance verification can meet the variation criterion and the plots can be referred to Appendix B of this report.

System Verification	Target SAR (1W) ($\pm 10\%$)		Measured SAR (Normalized to 1W)		Liquid Temp.	Test Date
	1-g (W/Kg)	10-g (W/Kg)	1-g (W/Kg)	10-g (W/Kg)		
835MHz Head	9.56 (8.60~10.51)	6.22 (5.60~6.84)	10.10	6.56	21.6 °C	Nov. 17, 2017
835MHz Body	9.48 (8.53~10.42)	6.29 (5.66~6.91)	9.73	6.38	21.4 °C	Nov. 16, 2017
1900MHz Head	39.70 (35.73~43.67)	20.50 (18.45~22.55)	40.73	21.11	21.5 °C	Nov. 06, 2017
1900MHz Body	38.43 (34.59~42.27)	20.34 (18.31~22.37)	39.45	20.42	21.3 °C	Nov. 07, 2017
2450MHz Head	52.40 (47.16~57.64)	24.00 (21.60~26.40)	51.48	24.09	21.1 °C	Nov. 09, 2017
2450MHz Body	49.32 (44.39~54.25)	22.89 (20.60~25.17)	50.53	23.61	21.4 °C	Nov. 10, 2017

5. SAR Measurement variability and uncertainty

5.1. SAR measurement variability

Per KDB865664 D01 SAR measurement 100 MHz to 6 GHz, SAR measurement variability must be assessed for each frequency band, which is determined by the SAR probe calibration point and tissue-equivalent medium used for the device measurements. The additional measurements are repeated after the completion of all measurements requiring the same head or body tissue-equivalent medium in a frequency band. The test device should be returned to ambient conditions (normal room temperature) with the battery fully charged before it is re-mounted on the device holder for the repeated measurement(s) to minimize any unexpected variations in the repeated results.

- 1) Repeated measurement is not required when the original highest measured SAR is < 0.80 W/kg; steps 2) through 4) do not apply.
- 2) When the original highest measured SAR is ≥ 0.80 W/kg, repeat that measurement once.
- 3) Perform a second repeated measurement only if the ratio of largest to smallest SAR for the original and first repeated measurements is > 1.20 or when the original or repeated measurement is ≥ 1.45 W/kg ($\sim 10\%$ from the 1-g SAR limit).
- 4) Perform a third repeated measurement only if the original, first or second repeated measurement is ≥ 1.5 W/kg and the ratio of largest to smallest SAR for the original, first and second repeated measurements is > 1.20 .

5.2. SAR measurement uncertainty

Per KDB865664 D01 SAR Measurement 100 MHz to 6 GHz, when the highest measured 1-g SAR within a frequency band is < 1.5 W/kg, the extensive SAR measurement uncertainty analysis described in IEEE Std 1528-2013 is not required in SAR reports submitted for equipment approval. The equivalent ratio (1.5/1.6) is applied to extremity and occupational exposure conditions.

6. RF Exposure Positions

6.1. Ear and handset reference point

Figure 6.1.1 shows the front, back, and side views of the SAM phantom. The center-of-mouth reference point is labeled “M”, the left ear reference point (ERP) is marked “LE”, and the right ERP is marked “RE”.

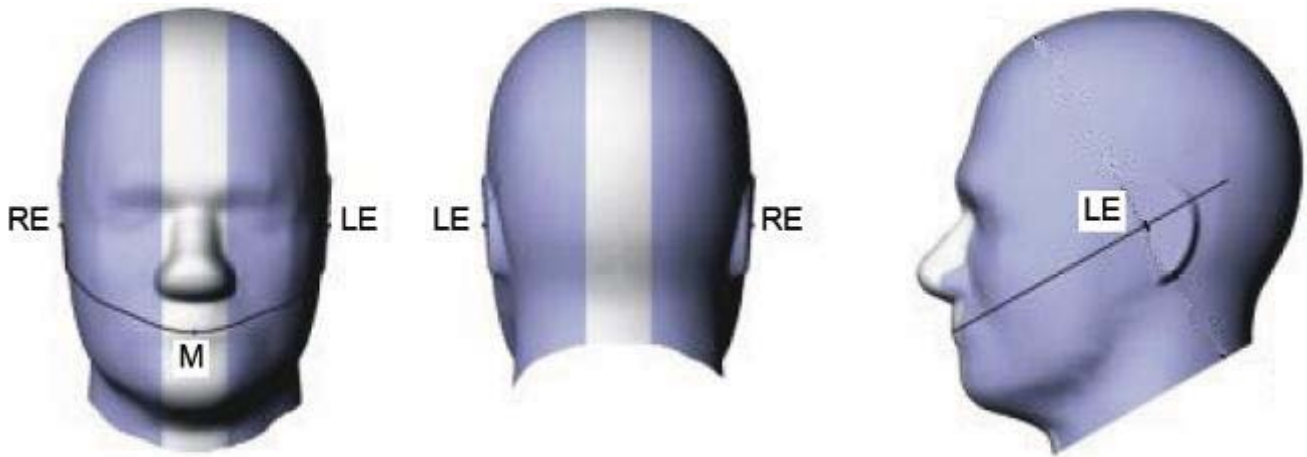


Fig 6.1.1 Front, back, and side views of SAM phantom

6.2. Definition of the cheek position

1. Define two imaginary lines on the handset, the vertical centerline and the horizontal line. The vertical centerline passes through two points on the front side of the handset: the midpoint of the width w_t of the handset at the level of the acoustic output (point A in Figure 6.2.1 and Figure 6.2.2), and the midpoint of the width w_b of the bottom of the handset (point B). The horizontal line is perpendicular to the vertical centerline and passes through the center of the acoustic output (see Figure 6.2.1). The two lines intersect at point A. Note that for many handsets, point A coincides with the center of the acoustic output; however, the acoustic output may be located elsewhere on the horizontal line. Also note that the vertical centerline is not necessarily parallel to the front face of the handset (see Figure 6.2.2), especially for clamshell handsets, handsets with flip covers, and other irregularly-shaped handsets.
2. Position the handset close to the surface of the phantom such that point A is on the (virtual) extension of the line passing through points RE and LE on the phantom (see Figure 6.2.3), such that the plane defined by the vertical centerline and the horizontal line of the handset is approximately parallel to the sagittal plane of the phantom.
3. Translate the handset towards the phantom along the line passing through RE and LE until handset point A touches the pinna at the ERP
4. While maintaining the handset in this plane, rotate it around the LE-RE line until the vertical centerline is in the plane normal to the plane containing B-M and N-F lines, i.e., the Reference Plane.
5. Rotate the handset around the vertical centerline until the handset (horizontal line) is parallel to the N-F line.

6. While maintaining the vertical centerline in the Reference Plane, keeping point A on the line passing through RE and LE, and maintaining the handset contact with the pinna, rotate the handset about the N-F line until any point on the handset is in contact with a phantom point below the pinna on the cheek. See Figure 6.2.3. The actual rotation angles should be documented in the test report.

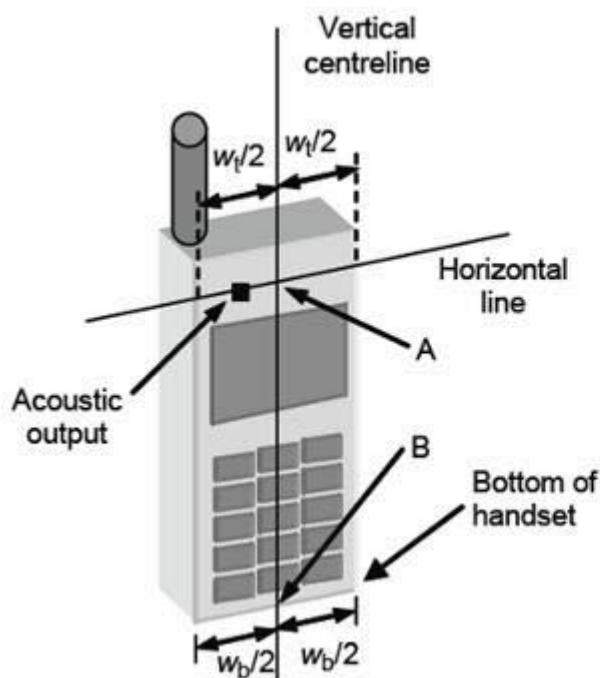


Fig 6.2.1 Handset vertical and horizontal reference lines—"fixed case"

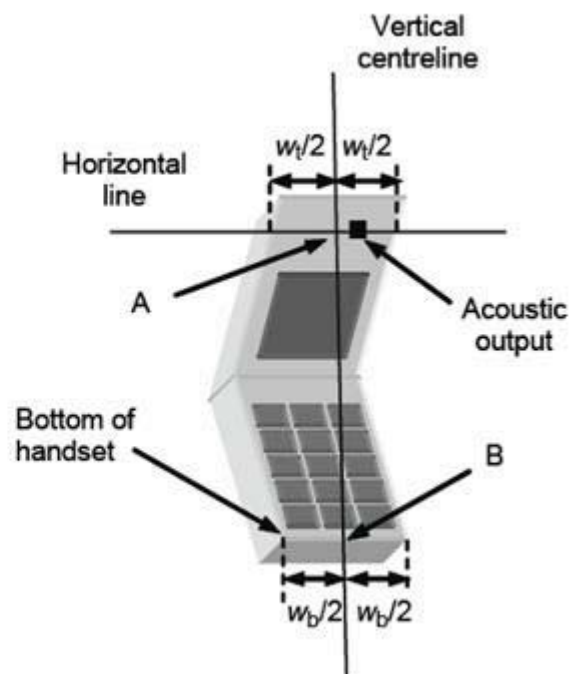


Fig 6.2.2 Handset vertical and horizontal reference lines—"clam-shell case"

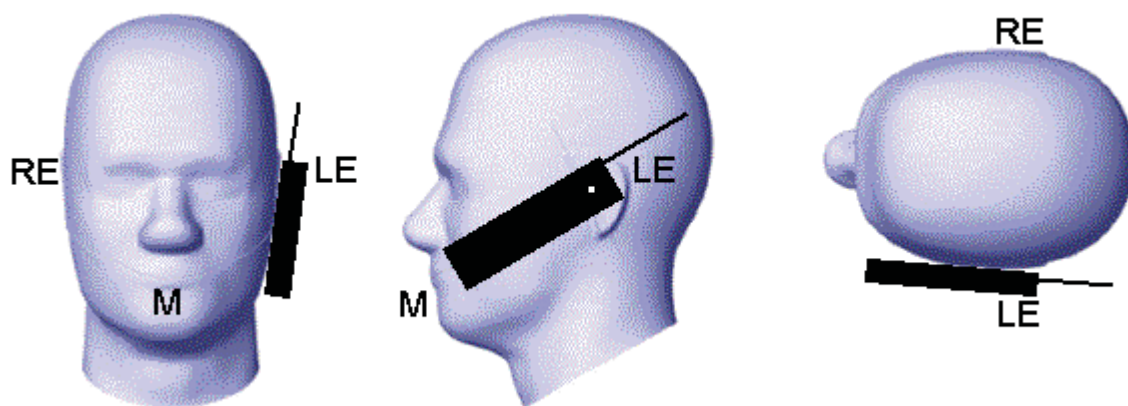


Fig 6.2.3 cheek or touch position. The reference points for the right ear (RE), left ear (LE), and mouth (M), which establish the Reference Plane for handset positioning, are indicated.

6.3. Definition of the tilt position

1. While maintaining the orientation of the handset, retract the handset parallel to the reference plane far enough away from the phantom to enable a rotation of the device by 15 degree.
2. Rotate the Handset around the horizontal line by 15 degree (see Figure 6.3.1).
3. While maintaining the orientation of the handset, move the handset towards the phantom on a line passing through RE and LE until any part of the handset touches the ear. The tilt position is obtained when the contact is on the pinna. If the contact is at any location other than the pinna, e.g., the antenna with the back of the phantom head, the angle of the handset shall be reduced. In this case, the tilt position is obtained if any part of the handset is in contact with the pinna as well as a second part of the handset is in contact with the phantom, e.g., the antenna with the back of the head.

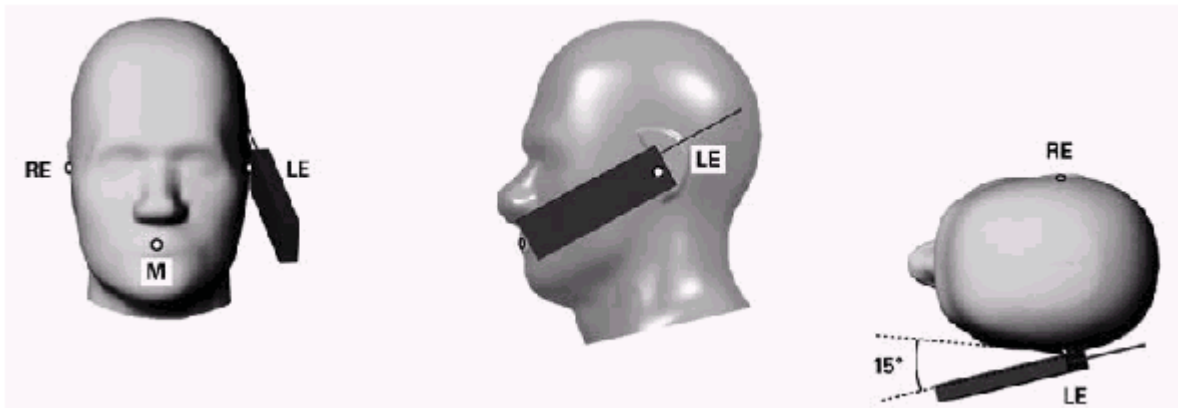


Figure 6.3.1 – Tilt position of the wireless device on the left side of SAM

6.4. Body Worn Accessory

1. Body-worn operating configurations are tested with the belt-clips and holsters attached to the device and positioned against a flat phantom in a normal use configuration (see Figure 6.4.1). Per KDB 648474 D04, body-worn accessory exposure is typically related to voice mode operations when handsets are carried in body-worn accessories. The body-worn accessory procedures in FCC KDB 447498 D01 should be used to test for body-worn accessory SAR compliance, without a headset connected to it. This enables the test results for such configuration to be compatible with that required for hotspot mode when the body-worn accessory test separation distance is greater than or equal to that required for hotspot mode, when applicable. When the reported SAR for body-worn accessory, measured without a headset connected to the handset is $< 1.2 \text{ W/kg}$, the highest reported SAR configuration for that wireless mode and frequency band should be repeated for that body-worn accessory with a handset attached to the handset.
2. Accessories for body-worn operation configurations are divided into two categories: those that do not contain metallic components and those that do contain metallic components and those that do contain metallic components. When multiple accessories that do not contain metallic components are supplied with the device, the device is tested with only the accessory that dictates the closest

spacing to the body. Then multiple accessories that contain metallic components are test with the device with each accessory. If multiple accessories share an identical metallic component (i.e. the same metallic belt-clip used with different holsters with no other metallic components) only the accessory that dictates the closest spacing to the body is tested.

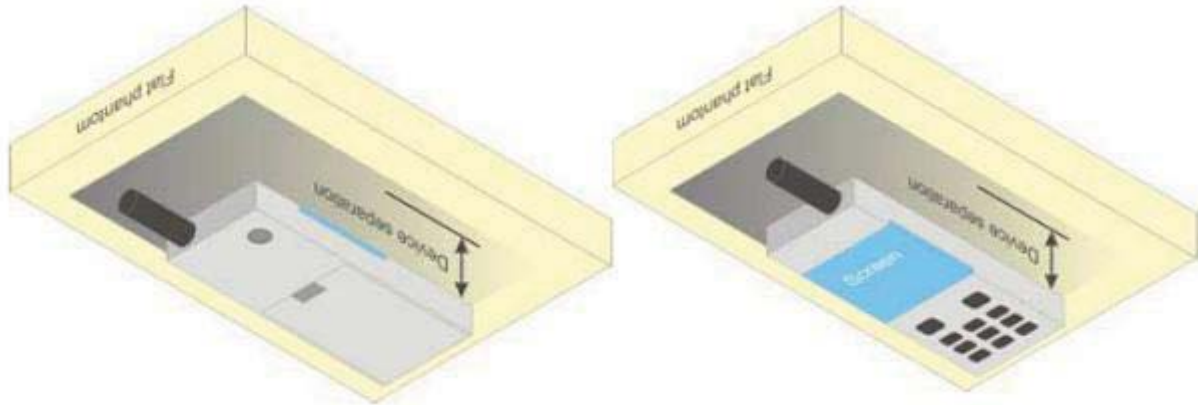


Figure 6.4.1 – Test positions for body-worn devices

6.5. Wireless Router Devices

Some battery-operated handsets have the capability to transmit and receive user through simultaneous transmission of WI-FI simultaneously with a separate licensed transmitter. The FCC has provided guidance in FCC HDB Publication 941225 D06 where SAR test considerations for handsets ($L \times W \geq 9 \text{ cm} \times 5 \text{ cm}$) are based on a composite test separation distance of 10mm from the front, back and edges of the device containing transmitting antennas within 2.5cm of their edges, determined from general mixed use conditions for this type of devices. Since the hotspot SAR results may overlap with the body-worn accessory SAR requirements, the more conservative configurations can be considered, thus excluding some body-worn accessory SAR tests.

When the user enables the personal wireless router functions for the handset, actual operations include simultaneous transmission of both the WI-FI transmitter and another licensed transmitter. Both transmitters often do not transmit at the same transmitting frequency and thus cannot be evaluated for SAR under actual use conditions due to the limitations of the SAR assessment probes. Therefore, SAR must be evaluated for each frequency transmission and mode separately and spatially summed with the WI-FI transmitter according to FCC KDB Publication 447498 D01 publication procedures. The “Portable Hotspot” feature on the handset was NOT activated during SAR assessments, to ensure the SAR measurements were evaluated for a single transmission frequency RF signal at a time.

7. RF Output Power

7.1. Maximum Tune-up Limit

Band	Mode	The Tune-up Maximum Power (Customer Declared)(dBm)	Range	Measured Maximum Output Power(dBm)
GSM 850	GSM (GMSK)	30±1	29~31	30.87
	GPRS(GMSK, 1 Tx slot)	30±1	29~31	30.52
	GPRS(GMSK, 2 Tx slot)	29±1	28~30	29.73
	GPRS(GMSK, 3 Tx slot)	27±1	26~28	27.93
	GPRS(GMSK, 4 Tx slot)	26±1	25~27	26.73
GSM 1900	GSM (GMSK)	29±1	28~30	29.22
	GPRS(GMSK, 1 Tx slot)	29±1	28~30	29.27
	GPRS(GMSK, 2 Tx slot)	28±1	27~29	28.59
	GPRS(GMSK, 3 Tx slot)	26±1	25~27	26.89
	GPRS(GMSK, 4 Tx slot)	25±1	24~26	25.81
WCDMA Band V	RMC 12.2Kbps	21±1	20~22	21.96
	HSDPA Subtest-1	21±1	20~22	21.90
	HSDPA Subtest-2	21±1	20~22	21.89
	HSDPA Subtest-3	21±1	20~22	21.88
	HSDPA Subtest-4	21±1	20~22	21.90
	HSUPA Subtest-1	20±1	19~21	20.45
	HSUPA Subtest-2	20±1	19~21	20.39
	HSUPA Subtest-3	20±1	19~21	20.37
	HSUPA Subtest-4	20±1	19~21	20.43
	HSUPA Subtest-5	21±1	20~22	21.89
WCDMA Band II	RMC 12.2Kbps	21±1	20~22	21.96
	HSDPA Subtest-1	21±1	20~22	21.96
	HSDPA Subtest-2	21±1	20~22	21.91
	HSDPA Subtest-3	21±1	20~22	21.92
	HSDPA Subtest-4	21±1	20~22	21.95
	HSUPA Subtest-1	20±1	19~21	20.28
	HSUPA Subtest-2	20±1	19~21	20.19
	HSUPA Subtest-3	20±1	19~21	20.25
	HSUPA Subtest-4	20±1	19~21	20.28
	HSUPA Subtest-5	21±1	20~22	21.89
WLAN 2.4G	802.11b	16±1	15~17	16.8
	802.11g	15±1	14~16	15.0
	802.11n-HT20	15±1	14~16	15.0

	802.11n-HT40	15±1	14~16	14.2
Bluetooth	BDR+EDR	1M	2±1	1~3
		2M	-2±1	-3~-1
		3M	-2±1	-3~-1
	BLE	-5.5±1	-6.5~-4.5	-4.99

7.2. GSM Conducted Power

Refer to KDB 447498 D01, the maximum output power (including tune-up tolerance) channel is used for SAR testing and for further SAR test reduction. Therefore, the EUT was set in GSM850 GPRS (4TS) and GSM1900 GPRS (4TS).

Band GSM850	Burst-Averaged output Power (dBm)				Frame-Averaged output Power (dBm)			
Tx Channel	Tune-up	128	189	251	Tune-up	128	189	251
Frequency (MHz)	(dBm)	824.2	836.4	848.8	(dBm)	824.2	836.4	848.8
GSM (GMSK)	31.00	30.87	30.83	30.78	21.97	21.84	21.80	21.75
GPRS(GMSK, 1 TS)	31.00	30.48	30.52	30.41	21.97	21.45	21.49	21.38
GPRS(GMSK, 2 TS)	30.00	29.73	29.70	29.65	23.98	23.71	23.68	23.63
GPRS(GMSK, 3 TS)	28.00	27.91	27.84	27.93	23.74	23.65	23.58	23.67
GPRS(GMSK, 4 TS)	27.00	26.73	26.64	26.59	23.99	23.72	23.63	23.58
Band GSM1900	Burst-Averaged output Power (dBm)				Frame-Averaged output Power (dBm)			
Tx Channel	Tune-up	512	661	810	Tune-up	512	661	810
Frequency (MHz)	(dBm)	1850.2	1880.0	1909.8	(dBm)	1850.2	1880.0	1909.8
GSM (GMSK)	30.00	28.73	29.14	29.22	20.97	19.70	20.11	20.19
GPRS(GMSK, 1 TS)	30.00	28.65	29.12	29.27	20.97	19.62	20.09	20.24
GPRS(GMSK, 2 TS)	29.00	27.94	28.35	28.59	22.98	21.92	22.33	22.57
GPRS(GMSK, 3 TS)	27.00	26.46	26.75	26.89	22.74	22.20	22.49	22.63
GPRS(GMSK, 4 TS)	26.00	25.21	25.55	25.81	22.99	22.20	22.54	22.80

Note: The frame-averaged power is linearly scaled the maximum burst averaged power over 8 time slots.

The calculated method are shown as below:

Frame-averaged power = Maximum burst averaged power (1 TS) - 9.03 dB

Frame-averaged power = Maximum burst averaged power (2 TS) - 6.02 dB

Frame-averaged power = Maximum burst averaged power (3 TS) - 4.26 dB

Frame-averaged power = Maximum burst averaged power (4 TS) - 3.01 dB

7.3. WCDMA Conducted Power

The following tests were conducted according to the test requirements outlines in 3GPP TS 34.121 specification. A summary of these settings are illustrated below:

1. Release99 Setup Configuration

Mode	Subtest	Rel99
WCDMA General Settings	Loopback Mode	Test Mode 1

	Rel99 RMC	12.2kbps RMC
	Power Control Algorithm	Algorithm2
	β_c/β_d	8/15

2. HSDPA Setup Configuration

	Mode	HSDPA	HSDPA	HSDPA	HSDPA
	Subtest	1	2	3	4
WCDMA General Settings	Loopback Mode	Test Mode 1			
	Rel99 RMC	12.2kbps RMC			
	HSDPA FRC	H-Set1			
	Power Control Algorithm	Algorithm 2			
	β_c	2/15	12/15	15/15	15/15
	β_d	15/15	15/15	8/15	4/15
	Bd (SF)	64			
	β_c/β_d	2/15	12/15	15/8	15/4
	β_{hs}	4/15	24/15	30/15	30/15
HSDPA Specific Settings	D_{ACK}	8			
	D_{NAK}	8			
	DCQI	8			
	Ack-Nack repetition factor	3			
	CQI Feedback (Table 5.2B.4)	4ms			
	CQI Repetition Factor (Table 5.2B.4)	2			
	$A_{hs} = \beta_{hs}/\beta_c$	30/15			

3. HSUPA Setup Configuration

	Mode	HSUPA	HSUPA	HSUPA	HSUPA	HSUPA
	Subtest	1	2	3	4	5
WCDMA General Settings	Loopback Mode	Test Mode 1				
	Rel99 RMC	12.2kbps RMC				
	HSDPA FRC	H-Set1				
	HSUPA Test	HSUPA Loopback				
	Power Control Algorithm	Algorithm2				
	β_c	11/15	6/15	15/15	2/15	15/15
	β_d	15/15	15/15	9/15	15/15	15/15
	β_{ec}	209/225	12/15	30/15	2/15	24/15
	β_c/β_d	11/15	6/15	15/9	2/15	15/15
	β_{hs}	22/15	12/15	30/15	4/15	30/15
	β_{ed}	1309/225	94/75	47/15 47/15	56/75	134/15
HSDPA Specific Settings	CM (dB)	1.0	3.0	2.0	3.0	1.0
	D_{ACK}	8				
	D_{NAK}	8				
	DCQI	8				
	Ack-Nack repetition factor	3				
	CQI Feedback (Table 5.2B.4)	4ms				
	CQI Repetition Factor (Table 5.2B.4)	2				
HSUPA Specific Settings	$A_{hs} = \beta_{hs}/\beta_c$	30/15				
	D E-DPCCH	6	8	8	5	7
	DHARQ	0	0	0	0	0
	AG Index	20	12	15	17	21
	ETFCI (from 34.121 Table C.11.1.3)	75	67	92	71	81
	Associated Max UL Data Rate kbps	242.1	174.9	482.8	205.8	308.9

4. WCDMA Conducted Power Results

- 1) Refer to KDB 941225 D01, SAR for Head / Hotspot / Body-worn exposure is measured using a 12.2 kbps RMC with TPC bits configured to all "1's".
- 2) Refer to KDB 941225 D01, RMC 12.2kbps setting is used to evaluate SAR. If the maximum output power and tune-up tolerance specified for production units in HSDPA / HSUPA is $\leq \frac{1}{4}$ dB higher than RMC 12.2Kbps or when the highest reported SAR of the RMC12.2Kbps is scaled by the ratio of specified maximum output power and tune-up tolerance of HSDPA / HSUPA to RMC12.2Kbps and the adjusted SAR is ≤ 1.2 W/kg, SAR measurement is not required for HSDPA / HSUPA.

Band	WCDMA Band V			
Tx Channel	Tune-up	4132	4182	4233
Frequency (MHz)		826.4	836.4	846.6
RMC 12.2Kbps	22.00	21.87	21.96	21.90
HSDPA Subtest-1	22.00	21.82	21.90	21.71
HSDPA Subtest-2	22.00	21.81	21.89	21.76
HSDPA Subtest-3	22.00	21.85	21.88	21.75
HSDPA Subtest-4	22.00	21.76	21.90	21.70
HSUPA Subtest-1	21.00	20.31	20.45	20.34
HSUPA Subtest-2	21.00	20.31	20.39	20.32
HSUPA Subtest-3	21.00	20.28	20.37	20.35
HSUPA Subtest-4	21.00	20.25	20.43	20.29
HSUPA Subtest-5	22.00	21.81	21.89	21.76
Band	WCDMA Band II			
Tx Channel	Tune-up	9262	9400	9538
Frequency (MHz)		1852.4	1880	1907.6
RMC 12.2Kbps	22.00	21.96	21.80	21.66
HSDPA Subtest-1	22.00	21.96	21.77	21.59
HSDPA Subtest-2	22.00	21.91	21.77	21.57
HSDPA Subtest-3	22.00	21.92	21.74	21.55
HSDPA Subtest-4	22.00	21.95	21.75	21.56
HSUPA Subtest-1	21.00	20.28	20.17	20.09
HSUPA Subtest-2	21.00	20.19	20.15	20.10
HSUPA Subtest-3	21.00	20.25	20.16	20.09
HSUPA Subtest-4	21.00	20.28	20.21	20.12
HSUPA Subtest-5	22.00	21.89	21.76	21.52

7.4. WLAN & Bluetooth Output Power

7.4.1. Output Power Results Of WLAN

The output power of WLAN is as following:

Mode	Channel	Frequency (MHz)	Tune-up	Output Power (dBm)
802.11b	1	2412	17.0	16.8
	6	2437	17.0	16.6
	11	2462	17.0	16.6
802.11g	1	2412	16.0	14.9
	6	2437	16.0	14.5
	11	2462	16.0	15.0
802.11n (HT20)	1	2412	16.0	14.4
	6	2437	16.0	15.0
	11	2462	16.0	14.6
802.11n (HT40)	3	2422	16.0	14.1
	6	2437	16.0	14.2
	9	2452	16.0	14.1

7.4.2. Output Power Results Of Bluetooth

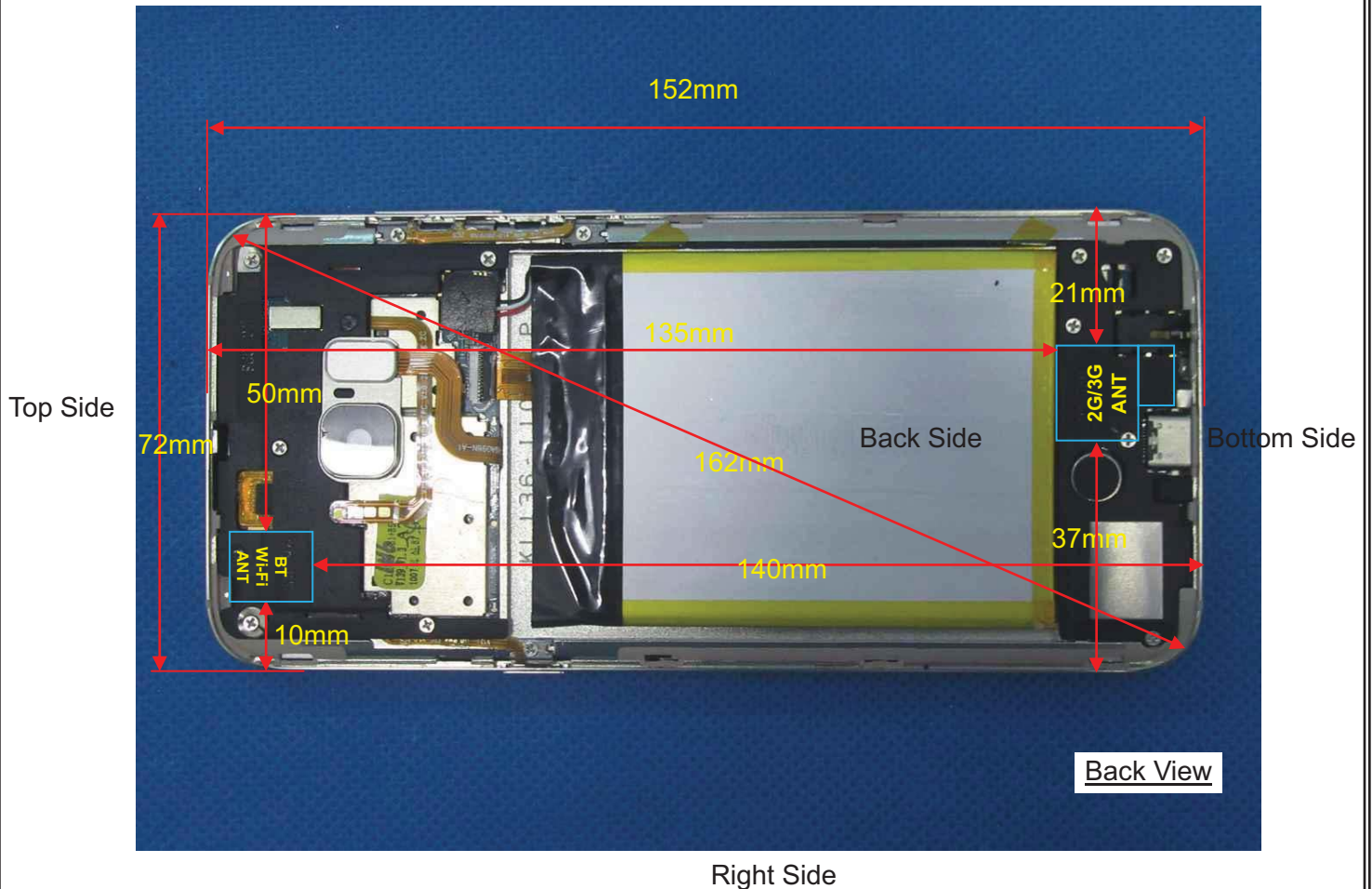
The output power of Bluetooth is as following:

BDR+EDR	Output Power (dBm)				
	Data Rates	Tune-up	Channel		
			0CH	39CH	78CH
	1M	3.00	2.33	2.83	2.49
	2M	-1.00	-2.32	-1.71	-1.82
	3M	-1.00	-2.08	-1.45	-1.56

BLE	Channel	Tune-up	Output Power (dBm)
	0CH	-4.50	-6.11
	19CH	-4.50	-6.17
	39CH	-4.50	-4.99

8. Antenna Location

Left Side



Right Side

Distance of the Antenna to the EUT surface/edge						
Antennas	Front Side	Back Side	Left Side	Right Side	Top Side	Bottom Side
WWAN Main	≤ 25mm	≤ 25mm	≤ 25mm	>25mm	>25mm	≤ 25mm
WLAN & BT	≤ 25mm	≤ 25mm	>25mm	≤ 25mm	≤ 25mm	>25mm
Positions for SAR tests						
Antennas	Front Side	Back Side	Left Side	Right Side	Top Side	Bottom Side
WWAN Main	Yes	Yes	Yes	NO	NO	Yes
WLAN & BT	Yes	Yes	NO	Yes	Yes	NO

9. Stand-alone SAR test exclusion

Refer to FCC KDB 447498D01, the 1-g SAR and 10-g SAR test exclusion thresholds for 100 MHz to 6 GHz at test separation distances ≤ 50 mm are determined by:

$[(\text{max. power of channel, including tune-up tolerance, mW})/(\text{min. test separation distance, mm})] \cdot [\sqrt{f_{\text{(GHz)}}}] \leq 3.0$ for 1-g SAR and ≤ 7.5 for 10-g extremity SAR, where:

- $f_{\text{(GHz)}}$ is the RF channel transmit frequency in GHz
- Power and distance are rounded to the nearest mW and mm before calculation
- The result is rounded to one decimal place for comparison

When the minimum test separation distance is < 5 mm, a distance of 5 mm is applied to determine SAR test exclusion.

Mode	P_{max} (dBm)	P_{max} (mW)	Distance (mm)	f (GHz)	Calculation Result	SAR Exclusion threshold	SAR test exclusion
Bluetooth	3	2	5	2.480	0.63	3	Yes

NOTE: Standalone SAR test exclusion for Bluetooth. The maximum tune-up tolerance limit of the BDR+EDR mode more than the BLE mode. So we only estimated the BDR+EDR mode based on the maximum tune-up output power. The BLE mode is represented by the BDR+EDR mode estimated results.

When standalone SAR test exclusion applies to an antenna that transmits simultaneously with other antennas, the standalone SAR must be estimated according to following to determine simultaneous transmission SAR test exclusion:

$[(\text{max. power of channel, including tune-up tolerance, mW})/(\text{min. test separation distance, mm})] \cdot [\sqrt{f_{\text{(GHz)}}}/x] \text{ W/kg}$ for test separation distances $\leq 50\text{mm}$, where $x = 7.5$ for 1-g SAR and $x = 18.75$ for 10-g SAR.

When the minimum test separation distance is < 5 mm, a distance of 5 mm is applied to determine SAR test exclusion.

Mode	Position	P_{max} (dBm)	P_{max} (mW)	Distance (mm)	f (GHz)	x	Estimated SAR (W/Kg)
Bluetooth	Head	3	2	5	2.480	7.5	0.084
Bluetooth	Body-Worn	3	2	10	2.480	7.5	0.042
Bluetooth	Hot spot	3	2	10	2.480	7.5	0.042

NOTE: Estimated SAR calculation for Bluetooth. The maximum tune-up tolerance limit of the BDR+EDR mode more than the BLE mode. So we only estimated the BDR+EDR mode based on the maximum tune-up output power. The estimated SAR for the BLE mode is represented by the BDR+EDR mode estimated results.

10. SAR Results

10.1. SAR measurement results

General Notes:

- 1) Refer to KDB447498 D01, all measurement SAR results are scaled to the maximum tune-up tolerance limit to demonstrate compliant.
- 2) Refer to KDB447498 D01, testing of other required channels within the operating mode of a frequency band is not required when the reported 1-g or 10-g SAR for the mid-band or highest output power channel is: ≤ 0.8 W/kg or 2.0 W/kg, for 1-g or 10-g respectively, when the transmission band is ≤ 100 MHz. When the maximum output power variation across the required test channels is $> \frac{1}{2}$ dB, instead of the middle channel, the highest output power channel must be used.
- 3) Refer to KDB865664 D01, for each frequency band, repeated SAR measurement is required only when the measured SAR is ≥ 0.8 W/Kg; if the deviation among the repeated measurement is $\leq 20\%$, and the measured SAR < 1.45 W/Kg, only one repeated measurement is required.
- 4) Refer to KDB648474 D04, SAR is evaluated without a headset connected to the device. When the standalone reported Body-Worn SAR is ≤ 1.2 W/kg, no additional SAR evaluations using a headset are required.
- 5) Refer to KDB865664 D02, SAR plot is only required for the highest measured SAR in each exposure configuration, wireless mode and frequency band combination; Plots are also required when the measured SAR is > 1.5 W/kg, or > 7.0 W/kg for occupational exposure. The published RF exposure KDB procedures may require additional plots; for example, to support SAR to peak location separation ratio test exclusion and/or volume scan post-processing(Refer to appendix C for details).

10.1.1. SAR measurement Result of GSM850

Test Position of Head	Test channel /Freq.	Test Mode	SAR Value (W/kg)		Power Drift (±5%)	Conducted power (dBm)	Tune-up power (dBm)	Scaled SAR 1g (W/Kg)
			1g	10g				
Left Cheek	128/824.2	GPRS(GMSK 4TS)	0.156	0.119	1.64	26.73	27.00	0.166
Left Tilt 15 Degree	128/824.2	GPRS(GMSK 4TS)	0.101	0.073	-1.89	26.73	27.00	0.107
Right Cheek	128/824.2	GPRS(GMSK 4TS)	0.184	0.133	3.69	26.73	27.00	0.196
Right Tilt 15 Degree	128/824.2	GPRS(GMSK 4TS)	0.127	0.083	-1.52	26.73	27.00	0.135

NOTE: Head SAR test results of GSM850.

Test Position of Body-Worn with 10mm	Test channel /Freq.	Test Mode	SAR Value (W/kg)		Power Drift (±5%)	Conducted power (dBm)	Tune-up power (dBm)	Scaled SAR 1g (W/Kg)
			1g	10g				
Front Side	128/824.2	GPRS(GMSK 4TS)	0.435	0.304	0.38	26.73	27.00	0.463
Back Side	128/824.2	GPRS(GMSK 4TS)	0.414	0.281	-1.65	26.73	27.00	0.441

NOTE: Body-Worn SAR test results of GSM850

Test Position of Hotspot with 10mm	Test channel /Freq.	Test Mode	SAR Value (W/kg)		Power Drift (±5%)	Conducted power (dBm)	Tune-up power (dBm)	Scaled SAR 1g (W/Kg)
			1g	10g				
Front Side	128/824.2	GPRS(GMSK 4TS)	0.435	0.304	0.38	26.73	27.00	0.463
Back Side	128/824.2	GPRS(GMSK 4TS)	0.414	0.281	-1.65	26.73	27.00	0.441
Left Side	128/824.2	GPRS(GMSK 4TS)	0.243	0.151	-2.16	26.73	27.00	0.259
Bottom Side	128/824.2	GPRS(GMSK 4TS)	0.191	0.108	-3.13	26.73	27.00	0.203

NOTE: Hotspot SAR test results of GSM850

10.1.2. SAR measurement Result of GSM1900

Test Position of Head	Test channel /Freq.	Test Mode	SAR Value (W/kg)		Power Drift (±5%)	Conducted power (dBm)	Tune-up power (dBm)	Scaled SAR 1g (W/Kg)
			1g	10g				
Left Cheek	810/1909.8	GPRS(GMSK 4TS)	0.031	0.018	-1.73	25.81	26.00	0.032
Left Tilt 15 Degree	810/1909.8	GPRS(GMSK 4TS)	0.019	0.009	2.13	25.81	26.00	0.020
Right Cheek	810/1909.8	GPRS(GMSK 4TS)	0.022	0.006	2.84	25.81	26.00	0.023
Right Tilt 15 Degree	810/1909.8	GPRS(GMSK 4TS)	0.016	0.005	-1.54	25.81	26.00	0.017

NOTE: Head SAR test results of GSM1900

Test Position of Body-Worn with 10mm	Test channel /Freq.	Test Mode	SAR Value (W/kg)		Power Drift (±5%)	Conducted power (dBm)	Tune-up power (dBm)	Scaled SAR 1g (W/Kg)
			1g	10g				
Front Side	810/1909.8	GPRS(GMSK 4TS)	0.533	0.266	-0.98	25.81	26.00	0.557
Back Side	810/1909.8	GPRS(GMSK 4TS)	0.854	0.512	-0.81	25.81	26.00	0.892
Back Side - Repeated	810/1909.8	GPRS(GMSK 4TS)	0.846	0.501	-2.11	25.81	26.00	0.884
Back Side	512/1850.2	GPRS(GMSK 4TS)	0.716	0.382	-1.09	25.21	26.00	0.859
Back Side	661/1880	GPRS(GMSK 4TS)	0.689	0.364	-2.28	25.55	26.00	0.764

NOTE: Body-Worn SAR test results of GSM1900

Test Position of Hotspot with 10mm	Test channel /Freq.	Test Mode	SAR Value (W/kg)		Power Drift (±5%)	Conducted power (dBm)	Tune-up power (dBm)	Scaled SAR 1g (W/Kg)
			1g	10g				
Front Side	810/1909.8	GPRS(GMSK 4TS)	0.533	0.266	-0.98	25.81	26.00	0.557
Back Side	810/1909.8	GPRS(GMSK 4TS)	0.854	0.512	-0.81	25.81	26.00	0.892
Back Side - Repeated	810/1909.8	GPRS(GMSK 4TS)	0.846	0.501	-2.11	25.81	26.00	0.884
Left Side	810/1909.8	GPRS(GMSK 4TS)	0.368	0.224	1.16	25.81	26.00	0.384
Bottom Side	810/1909.8	GPRS(GMSK 4TS)	0.749	0.398	-0.85	25.81	26.00	0.782
Back Side	512/1850.2	GPRS(GMSK 4TS)	0.716	0.382	-1.09	25.21	26.00	0.859
Back Side	661/1880	GPRS(GMSK 4TS)	0.689	0.364	-2.28	25.55	26.00	0.764

NOTE: Hotspot SAR test results of GSM1900

10.1.3. SAR measurement Result of WCDMA Band V

Test Position of Head	Test channel /Freq.	Test Mode	SAR Value (W/kg)		Power Drift (±5%)	Conducted power (dBm)	Tune-up power (dBm)	Scaled SAR 1g (W/Kg)
			1g	10g				
Left Cheek	4182/836.4	RMC12.2K	0.084	0.048	3.51	21.96	22.00	0.085
Left Tilt 15 Degree	4182/836.4	RMC12.2K	0.038	0.020	-1.05	21.96	22.00	0.038
Right Cheek	4182/836.4	RMC12.2K	0.113	0.082	-3.07	21.96	22.00	0.114
Right Tilt 15 Degree	4182/836.4	RMC12.2K	0.046	0.025	-1.14	21.96	22.00	0.046

NOTE: Head SAR test results of WCDMA Band V

Test Position of Body-Worn with 10mm	Test channel /Freq.	Test Mode	SAR Value (W/kg)		Power Drift (±5%)	Conducted power (dBm)	Tune-up power (dBm)	Scaled SAR 1g (W/Kg)
			1g	10g				
Front Side	4182/836.4	RMC12.2K	0.224	0.133	-2.64	21.96	22.00	0.226
Back Side	4182/836.4	RMC12.2K	0.225	0.147	3.61	21.96	22.00	0.227

NOTE: Body-Worn SAR test results of WCDMA Band V

Test Position of Hotspot with 10mm	Test channel /Freq.	Test Mode	SAR Value (W/kg)		Power Drift (±5%)	Conducted power (dBm)	Tune-up power (dBm)	Scaled SAR 1g (W/Kg)
			1g	10g				
Front Side	4182/836.4	RMC12.2K	0.224	0.133	-2.64	21.96	22.00	0.226
Back Side	4182/836.4	RMC12.2K	0.225	0.147	3.61	21.96	22.00	0.227
Left Side	4182/836.4	RMC12.2K	0.086	0.053	-1.17	21.96	22.00	0.087
Bottom Side	4182/836.4	RMC12.2K	0.152	0.082	1.66	21.96	22.00	0.153

NOTE: Hotspot SAR test results of WCDMA Band V

10.1.4. SAR measurement Result of WCDMA Band II

Test Position of Head	Test channel /Freq.	Test Mode	SAR Value (W/kg)		Power Drift (±5%)	Conducted power (dBm)	Tune-up power (dBm)	Scaled SAR 1g (W/Kg)
			1g	10g				
Left Cheek	9262/1852.4	RMC12.2K	0.038	0.018	-1.20	21.96	22.00	0.038
Left Tilt 15 Degree	9262/1852.4	RMC12.2K	0.019	0.008	-1.05	21.96	22.00	0.019
Right Cheek	9262/1852.4	RMC12.2K	0.047	0.018	-4.29	21.96	22.00	0.047
Right Tilt 15 Degree	9262/1852.4	RMC12.2K	0.019	0.009	-1.54	21.96	22.00	0.019

NOTE: Head SAR test results of WCDMA Band II

Test Position of Body-Worn with 10mm	Test channel /Freq.	Test Mode	SAR Value (W/kg)		Power Drift (±5%)	Conducted power (dBm)	Tune-up power (dBm)	Scaled SAR 1g (W/Kg)
			1g	10g				
Front Side	9262/1852.4	RMC12.2K	0.133	0.064	4.42	21.96	22.00	0.134
Back Side	9262/1852.4	RMC12.2K	0.147	0.075	4.84	21.96	22.00	0.148

NOTE: Body-Worn SAR test results of WCDMA Band II

Test Position of Hotspot with 10mm	Test channel /Freq.	Test Mode	SAR Value (W/kg)		Power Drift (±5%)	Conducted power (dBm)	Tune-up power (dBm)	Scaled SAR 1g (W/Kg)
			1g	10g				
Front Side	9262/1852.4	RMC12.2K	0.133	0.064	4.42	21.96	22.00	0.134
Back Side	9262/1852.4	RMC12.2K	0.147	0.075	4.84	21.96	22.00	0.148
Left Side	9262/1852.4	RMC12.2K	0.086	0.046	1.15	21.96	22.00	0.087
Bottom Side	9262/1852.4	RMC12.2K	0.105	0.057	-2.16	21.96	22.00	0.106

NOTE: Hotspot SAR test results of WCDMA Band II

10.1.5. SAR measurement Result of WLAN 2.4G

Test Position of Head	Test channel /Freq.	Test Mode	SAR Value (W/kg)		Power Drift (±5%)	Conducted power (dBm)	Tune-up power (dBm)	Scaled SAR 1g (W/Kg)
			1g	10g				
Left Cheek	1/2412	802.11 b	0.124	0.052	-4.48	16.80	17.00	0.130
Left Tilt 15 Degree	1/2412	802.11 b	0.049	0.021	-1.16	16.80	17.00	0.051
Right Cheek	1/2412	802.11 b	0.056	0.022	1.12	16.80	17.00	0.059
Right Tilt 15 Degree	1/2412	802.11 b	0.046	0.019	2.30	16.80	17.00	0.048

NOTE: Head SAR test results of WLAN 2.4G

Test Position of Body-Worn with 10mm	Test channel /Freq.	Test Mode	SAR Value (W/kg)		Power Drift (±5%)	Conducted power (dBm)	Tune-up power (dBm)	Scaled SAR 1g (W/Kg)
			1g	10g				
Front Side	1/2412	802.11 b	0.039	0.028	2.14	16.80	17.00	0.041
Back Side	1/2412	802.11 b	0.225	0.100	-0.20	16.80	17.00	0.236

NOTE: Body-Worn SAR test results of WLAN 2.4G

Test Position of Hotspot with 10mm	Test channel /Freq.	Test Mode	SAR Value (W/kg)		Power Drift (±5%)	Conducted power (dBm)	Tune-up power (dBm)	Scaled SAR 1g (W/Kg)
			1g	10g				
Front Side	1/2412	802.11 b	0.039	0.028	2.14	16.80	17.00	0.041
Back Side	1/2412	802.11 b	0.225	0.100	-0.20	16.80	17.00	0.236
Right Side	1/2412	802.11 b	0.032	0.022	-1.16	16.80	17.00	0.034
Top Side	1/2412	802.11 b	0.045	0.029	-1.57	16.80	17.00	0.047

NOTE: Hotspot SAR test results of WLAN 2.4G

10.2. Simultaneous Transmission Possibilities

The Simultaneous Transmission Possibilities of this device are as below:

No.	Configuration	Head	Body	Hotspot	Note
1	GSM(Voice) + WLAN 2.4GHz(data)	Yes	Yes	n/a	
2	WCDMA(Voice) + WLAN 2.4GHz(data)	Yes	Yes	n/a	
3	GSM(Voice) + BT(data)	Yes	Yes	n/a	
4	WCDMA(Voice) + BT(data)	Yes	Yes	n/a	
5	GPRS(data) + WLAN 2.4GHz(data)	Yes	Yes	Yes	2.4GHz Hotspot
6	WCDMA(data) + WLAN 2.4GHz(data)	Yes	Yes	Yes	2.4GHz Hotspot
7	GPRS(data) + BT(data)	Yes	Yes	Yes	BT Tethering
8	WCDMA(data) + BT(data)	Yes	Yes	Yes	BT Tethering

NOTE:

- 1) This device supported VoIP in GPRS and WCDMA(e.g. 3rd party VoIP).
- 2) This device WLAN 2.4GHz supports Hotspot operation.
- 3) WLAN 2.4GHz and BT share the same antenna, and cannot transmit simultaneously.
- 4) EUT will choose each GSM and WCDMA according to the network signal condition; therefore, they will not operate simultaneously at any moment.
- 5) The Scaled SAR summation is calculated based on the same configuration and test position.

10.3. SAR Summation Scenario

Per KDB 447498 D01, simultaneous transmission SAR is compliant if,

- 1) Scalar SAR summation $< 1.6\text{W/kg}$.
- 2) $\text{SPLSR} = (\text{SAR}_1 + \text{SAR}_2)^{1.5} / (\text{min. separation distance, mm})$, and the peak separation distance is determined from the square root of $[(x_1 - x_2)^2 + (y_1 - y_2)^2 + (z_1 - z_2)^2]$, where (x_1, y_1, z_1) and (x_2, y_2, z_2) are the coordinates of the extrapolated peak SAR locations in the zoom scan. If $\text{SPLSR} \leq 0.04$, simultaneously transmission SAR measurement is not necessary.

Test Position		Scaled SAR _{MAX}		Σ 1-g SAR (W/Kg)	SPLSR	Remark
		GSM 850	WLAN 2.4G			
Head	Left Cheek	0.166	0.130	0.296	n/a	n/a
	Left Tilt 15 Degree	0.107	0.051	0.159	n/a	n/a
	Right Cheek	0.196	0.059	0.254	n/a	n/a
	Right Tilt 15 Degree	0.135	0.048	0.183	n/a	n/a
Body-Worn	Front Side	0.463	0.041	0.504	n/a	n/a
	Back Side	0.441	0.236	0.676	n/a	n/a
Hotspot	Front Side	0.463	0.041	0.504	n/a	n/a
	Back Side	0.441	0.236	0.676	n/a	n/a
	Left Side	0.259	n/a	0.259	n/a	n/a
	Right Side	n/a	0.034	0.034	n/a	n/a
	Top Side	n/a	0.047	0.047	n/a	n/a
	Bottom Side	0.203	n/a	0.203	n/a	n/a

NOTE: 1-g SAR Simultaneous Tx Combination of GSM850 and WLAN 2.4G.

Test Position		Scaled SAR _{MAX}		Σ 1-g SAR (W/Kg)	SPLSR	Remark
		GSM 1900	WLAN 2.4G			
Head	Left Cheek	0.032	0.130	0.162	n/a	n/a
	Left Tilt 15 Degree	0.020	0.051	0.071	n/a	n/a
	Right Cheek	0.023	0.059	0.082	n/a	n/a
	Right Tilt 15 Degree	0.017	0.048	0.065	n/a	n/a
Body-Worn	Front Side	0.557	0.041	0.598	n/a	n/a
	Back Side	0.892	0.236	1.128	n/a	n/a
Hotspot	Front Side	0.557	0.041	0.598	n/a	n/a
	Back Side	0.892	0.236	1.128	n/a	n/a
	Left Side	0.384	n/a	0.384	n/a	n/a
	Right Side	n/a	0.034	0.034	n/a	n/a
	Top Side	n/a	0.047	0.047	n/a	n/a
	Bottom Side	0.782	n/a	0.782	n/a	n/a

NOTE: 1-g SAR Simultaneous Tx Combination of GSM1900 and WLAN 2.4G.

Test Position		Scaled SAR _{MAX}		Σ 1-g SAR (W/Kg)	SPLSR	Remark
		WCDMA Band V	WLAN 2.4G			
Head	Left Cheek	0.085	0.130	0.215	n/a	n/a
	Left Tilt 15 Degree	0.038	0.051	0.090	n/a	n/a
	Right Cheek	0.114	0.059	0.173	n/a	n/a
	Right Tilt 15 Degree	0.046	0.048	0.095	n/a	n/a
Body-Worn	Front Side	0.226	0.041	0.267	n/a	n/a
	Back Side	0.227	0.236	0.463	n/a	n/a
Hotspot	Front Side	0.226	0.041	0.267	n/a	n/a
	Back Side	0.227	0.236	0.463	n/a	n/a
	Left Side	0.087	n/a	0.087	n/a	n/a
	Right Side	n/a	0.034	0.034	n/a	n/a
	Top Side	n/a	0.047	0.047	n/a	n/a
	Bottom Side	0.153	n/a	0.153	n/a	n/a

NOTE: 1-g SAR Simultaneous Tx Combination of WCDMA Band V and WLAN 2.4G.

Test Position		Scaled SAR _{MAX}		Σ 1-g SAR (W/Kg)	SPLSR	Remark
		WCDMA Band II	WLAN 2.4G			
Head	Left Cheek	0.038	0.130	0.168	n/a	n/a
	Left Tilt 15 Degree	0.019	0.051	0.070	n/a	n/a
	Right Cheek	0.047	0.059	0.106	n/a	n/a
	Right Tilt 15 Degree	0.019	0.048	0.067	n/a	n/a
Body-Worn	Front Side	0.134	0.041	0.175	n/a	n/a
	Back Side	0.148	0.236	0.384	n/a	n/a
Hotspot	Front Side	0.134	0.041	0.175	n/a	n/a
	Back Side	0.148	0.236	0.384	n/a	n/a
	Left Side	0.087	n/a	0.087	n/a	n/a
	Right Side	n/a	0.034	0.034	n/a	n/a
	Top Side	n/a	0.047	0.047	n/a	n/a
	Bottom Side	0.106	n/a	0.106	n/a	n/a

NOTE: 1-g SAR Simultaneous Tx Combination of WCDMA Band II and WLAN 2.4G.

Test Position		Scaled SAR _{MAX}		Σ 1-g SAR (W/Kg)	SPLSR	Remark
		GSM 850	BT			
Head	Left Cheek	0.166	0.084	0.250	n/a	n/a
	Left Tilt 15 Degree	0.107	0.084	0.191	n/a	n/a
	Right Cheek	0.196	0.084	0.280	n/a	n/a
	Right Tilt 15 Degree	0.135	0.084	0.219	n/a	n/a
Body-Worn	Front Side	0.463	0.042	0.505	n/a	n/a
	Back Side	0.441	0.042	0.482	n/a	n/a
Hotspot	Front Side	0.463	0.042	0.505	n/a	n/a
	Back Side	0.441	0.042	0.482	n/a	n/a
	Left Side	0.259	n/a	0.259	n/a	n/a
	Right Side	n/a	0.042	0.042	n/a	n/a
	Top Side	n/a	0.042	0.042	n/a	n/a
	Bottom Side	0.203	n/a	0.203	n/a	n/a

NOTE: 1-g SAR Simultaneous Tx Combination of GSM850 and BT

Test Position		Scaled SAR _{MAX}		Σ 1-g SAR (W/Kg)	SPLSR	Remark
		GSM 1900	BT			
Head	Left Cheek	0.032	0.084	0.116	n/a	n/a
	Left Tilt 15 Degree	0.020	0.084	0.104	n/a	n/a
	Right Cheek	0.023	0.084	0.107	n/a	n/a
	Right Tilt 15 Degree	0.017	0.084	0.101	n/a	n/a
Body-Worn	Front Side	0.557	0.042	0.599	n/a	n/a
	Back Side	0.892	0.042	0.934	n/a	n/a
Hotspot	Front Side	0.557	0.042	0.599	n/a	n/a
	Back Side	0.892	0.042	0.934	n/a	n/a
	Left Side	0.384	n/a	0.384	n/a	n/a
	Right Side	n/a	0.042	0.042	n/a	n/a
	Top Side	n/a	0.042	0.042	n/a	n/a
	Bottom Side	0.782	n/a	0.782	n/a	n/a

NOTE: 1-g SAR Simultaneous Tx Combination of GSM1900 and BT

Test Position		Scaled SAR _{MAX}		Σ 1-g SAR (W/Kg)	SPLSR	Remark
		WCDMA Band V	BT			
Head	Left Cheek	0.085	0.084	0.169	n/a	n/a
	Left Tilt 15 Degree	0.038	0.084	0.122	n/a	n/a
	Right Cheek	0.114	0.084	0.198	n/a	n/a
	Right Tilt 15 Degree	0.046	0.084	0.130	n/a	n/a
Body-Worn	Front Side	0.226	0.042	0.268	n/a	n/a
	Back Side	0.227	0.042	0.269	n/a	n/a
Hotspot	Front Side	0.226	0.042	0.268	n/a	n/a
	Back Side	0.227	0.042	0.269	n/a	n/a
	Left Side	0.087	n/a	0.087	n/a	n/a
	Right Side	n/a	0.042	0.042	n/a	n/a
	Top Side	n/a	0.042	0.042	n/a	n/a
	Bottom Side	0.153	n/a	0.153	n/a	n/a

NOTE: 1-g SAR Simultaneous Tx Combination of WCDMA Band V and BT

Test Position		Scaled SAR _{MAX}		Σ 1-g SAR (W/Kg)	SPLSR	Remark
		WCDMA Band II	BT			
Head	Left Cheek	0.038	0.084	0.122	n/a	n/a
	Left Tilt 15 Degree	0.019	0.084	0.103	n/a	n/a
	Right Cheek	0.047	0.084	0.131	n/a	n/a
	Right Tilt 15 Degree	0.019	0.084	0.103	n/a	n/a
Body-Worn	Front Side	0.134	0.042	0.176	n/a	n/a
	Back Side	0.148	0.042	0.190	n/a	n/a
Hotspot	Front Side	0.134	0.042	0.176	n/a	n/a
	Back Side	0.148	0.042	0.190	n/a	n/a
	Left Side	0.087	n/a	0.087	n/a	n/a
	Right Side	n/a	0.042	0.042	n/a	n/a
	Top Side	n/a	0.042	0.042	n/a	n/a
	Bottom Side	0.106	n/a	0.106	n/a	n/a

NOTE: 1-g SAR Simultaneous Tx Combination of WCDMA Band II and BT

11. Appendix A. Photo documentation

Table of contents
Test Facility
Product Photo
Test Positions
Liquid depth

Test Facility

Measurement System SATIMO



Product Photo

Front View



Back View



Reference Line



n/a

n/a

Test Positions

Left Cheek



Left Tilt 15 Degree



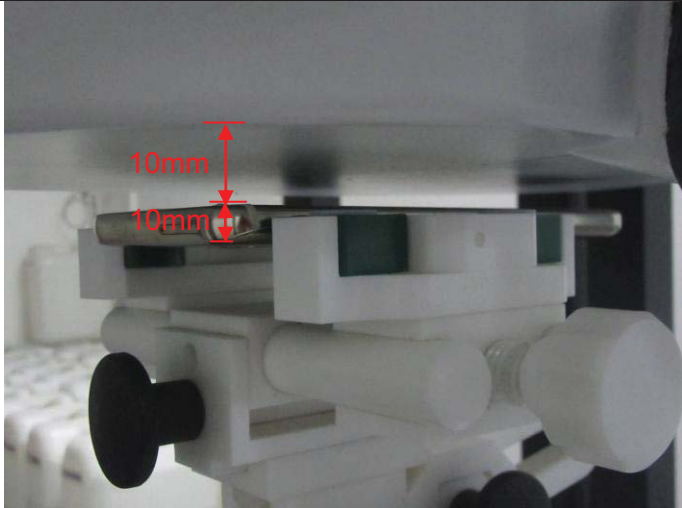
Right Cheek



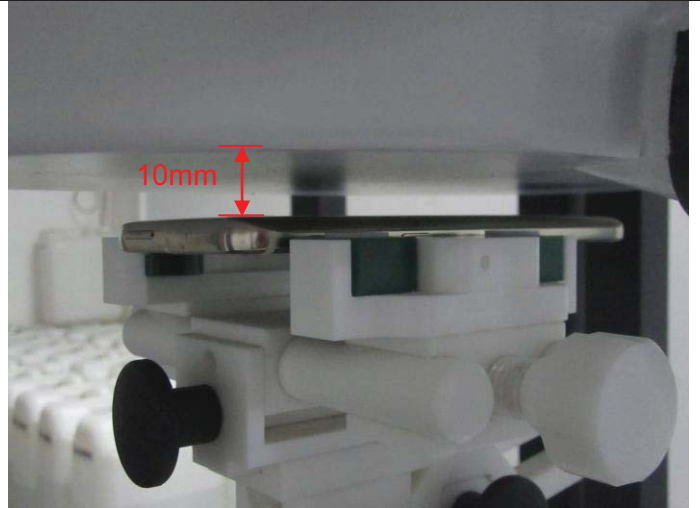
Right Tilt 15 Degree



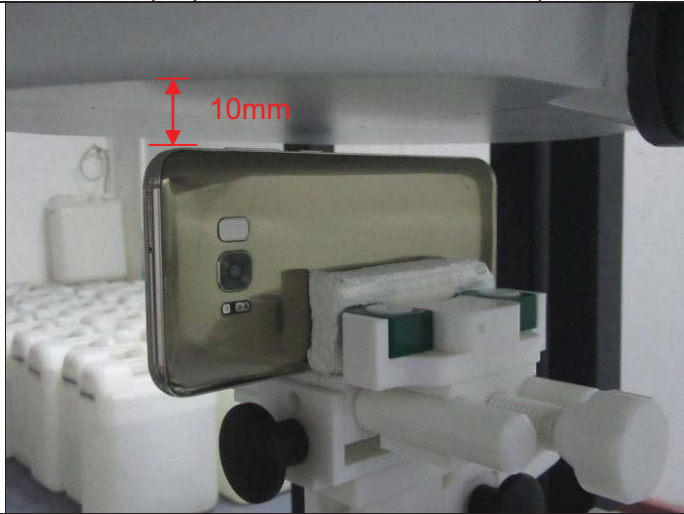
Front Side
(Separation distance of 10mm)



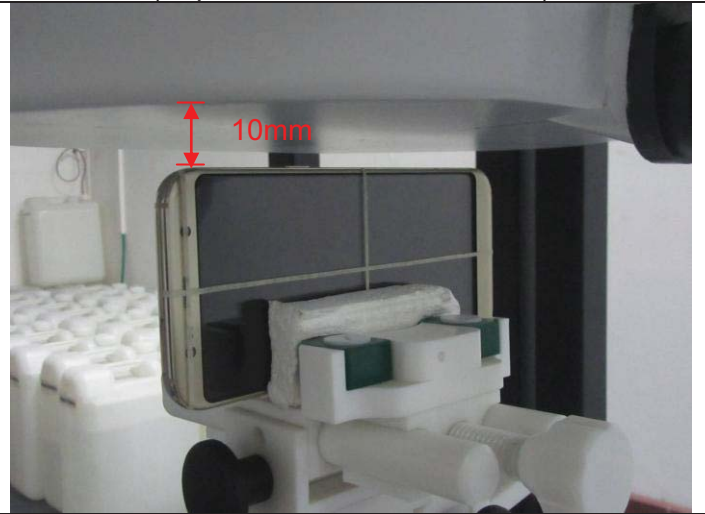
Back Side
(Separation distance of 10mm)



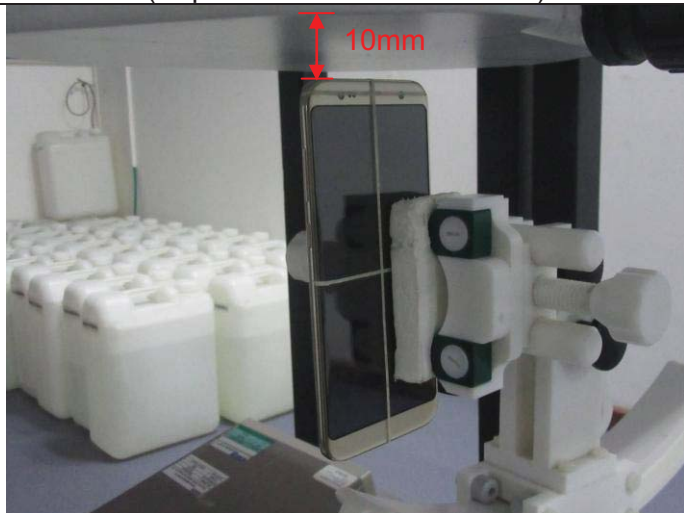
Left Side
(Separation distance of 10mm)



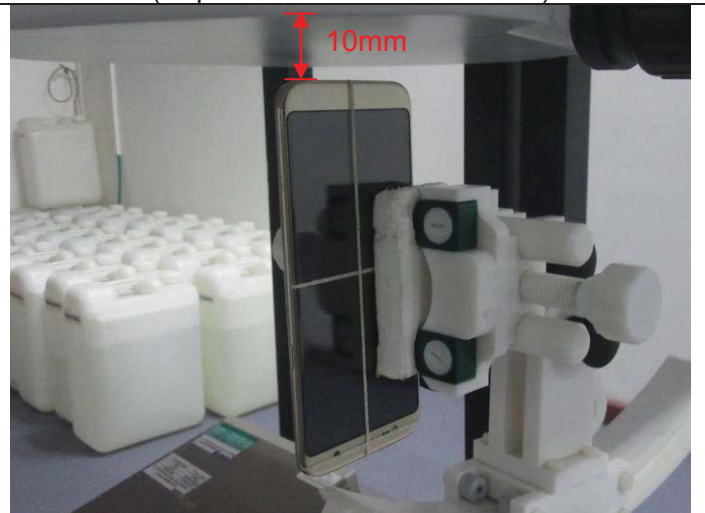
Right Side
(Separation distance of 10mm)



Top Side
(Separation distance of 10mm)



Bottom Side
(Separation distance of 10mm)



Liquid depth

Head 850MHz depth (15.3cm)



Body 850MHz depth (15.2cm)



Head 1900MHz depth (15.4cm)



Body 1900MHz depth (15.2cm)



Head 2450MHz depth (15.1cm)



Body 2450MHz depth (15.3cm)

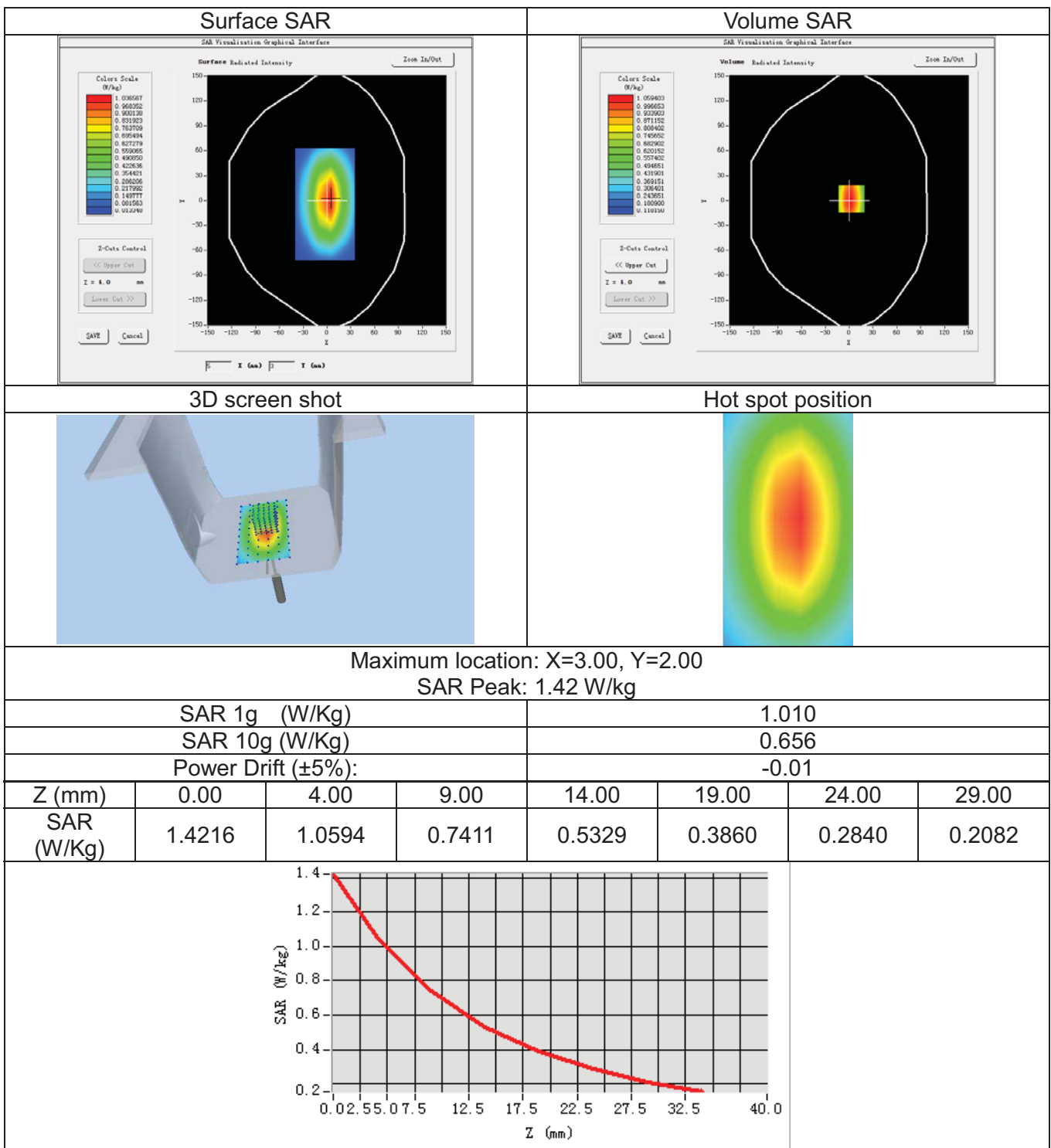


12. Appendix B. System Check Plots

Table of contents
System Performance Check - SID835 - Head
System Performance Check - SID835 - Body
System Performance Check - SID1900 - Head
System Performance Check - SID1900 - Body
System Performance Check - SID2450 - Head
System Performance Check - SID2450 - Body

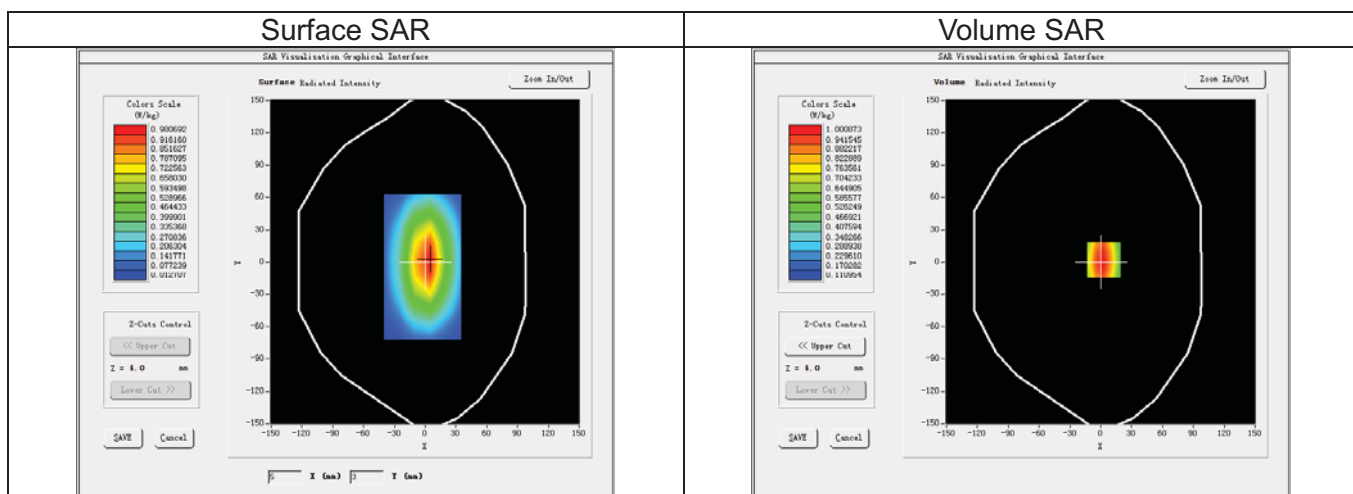
System Performance Check - SID835-Head

Date of measurement:	Nov. 17, 2017
Signal:	Communication System: CW; Frequency: 835.00MHz; Duty Cycle: 1:1.00
ConvF:	1.48
Liquid Parameters:	Relative permittivity (real part): 42.85; Conductivity (S/m): 0.89;
Device Position:	Dipole
Area Scan:	dx=15mm dy=15mm, h=5.00mm
Zoom Scan:	5x5x7, dx=8mm dy=8mm dz=5mm, h=5.00mm



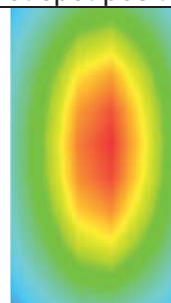
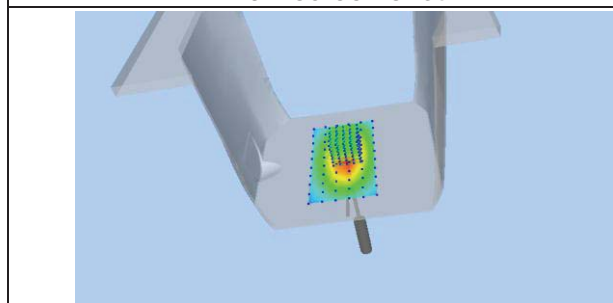
System Performance Check - SID835-Body

Date of measurement:	Nov. 16, 2017
Signal:	Communication System: CW; Frequency: 835.00MHz; Duty Cycle: 1:1.00
ConvF:	1.53
Liquid Parameters:	Relative permittivity (real part): 55.23; Conductivity (S/m): 0.99;
Device Position:	Dipole
Area Scan:	dx=15mm dy=15mm, h=5.00mm
Zoom Scan:	5x5x7, dx=8mm dy=8mm dz=5mm, h=5.00mm



3D screen shot

Hot spot position

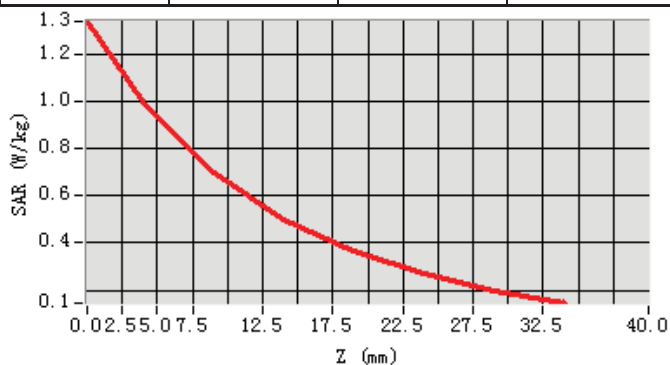


Maximum location: X=3.00, Y=2.00

SAR Peak: 1.35 W/kg

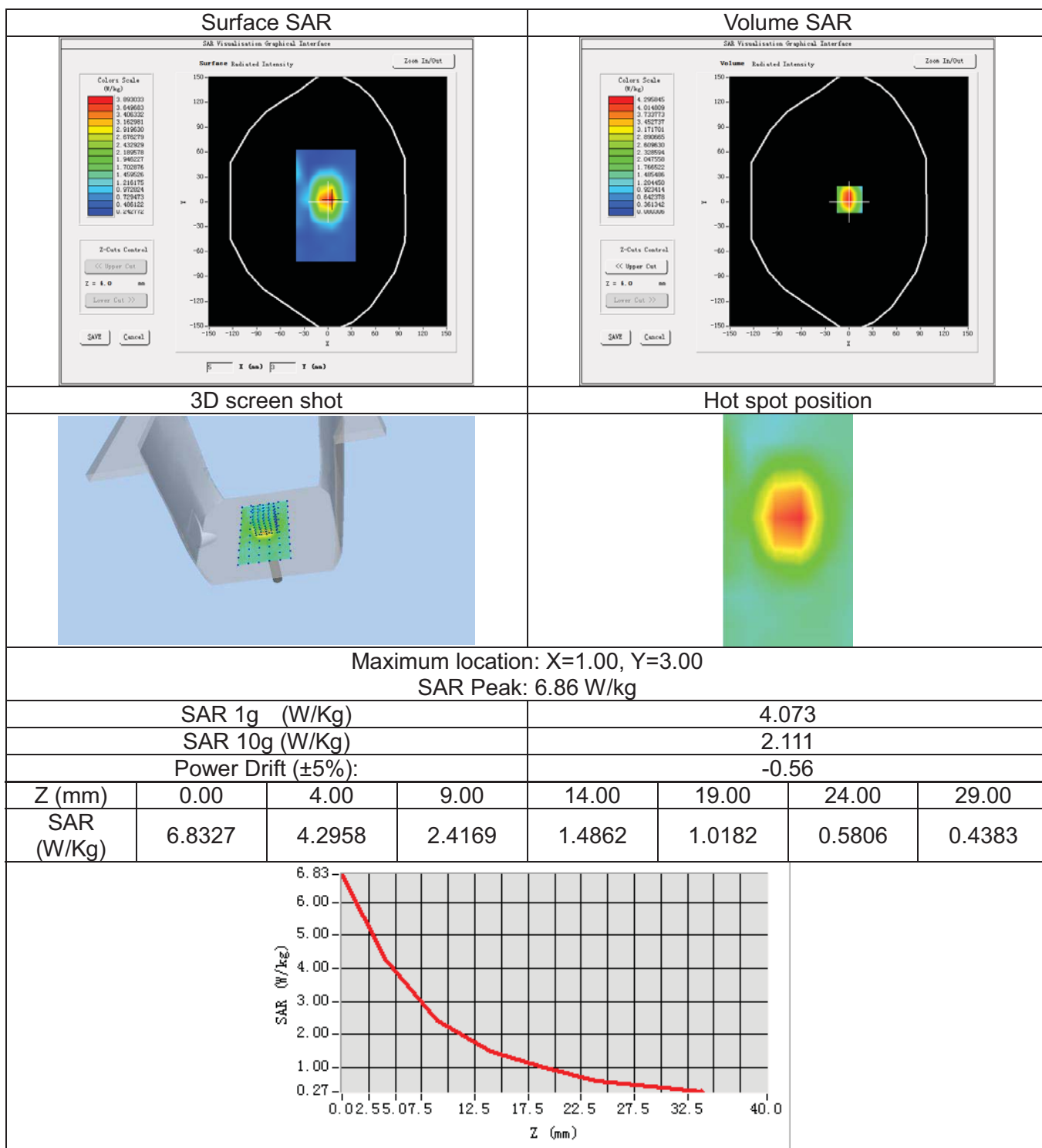
SAR 1g (W/Kg)	0.973
SAR 10g (W/Kg)	0.638
Power Drift (±5%):	-0.09

Z (mm)	0.00	4.00	9.00	14.00	19.00	24.00	29.00
SAR (W/Kg)	1.3419	1.0009	0.7010	0.5026	0.3648	0.2672	0.1958



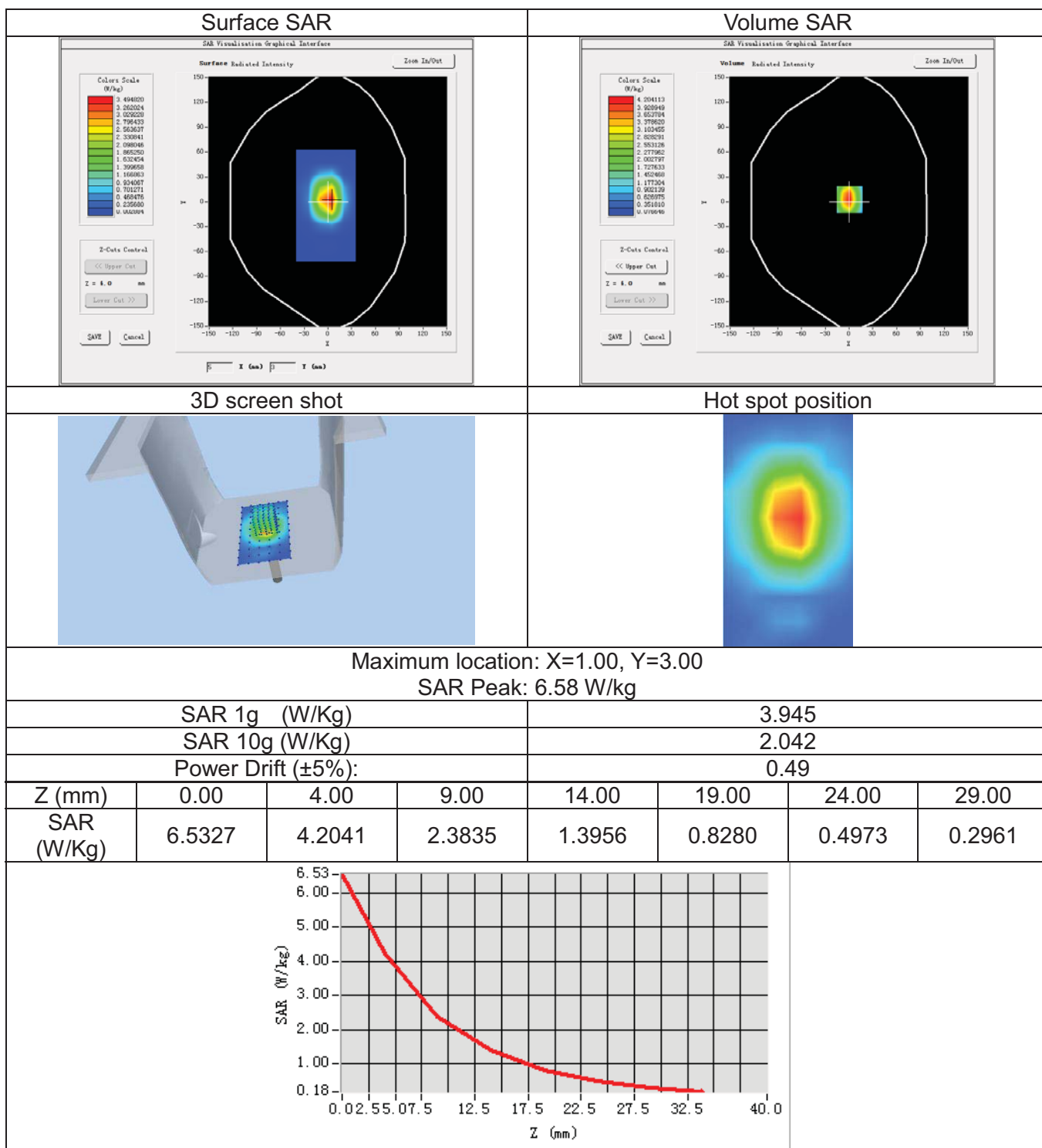
System Performance Check - SID1900-Head

Date of measurement:	Nov. 06, 2017
Signal:	Communication System: CW; Frequency: 1900.00MHz; Duty Cycle: 1:1.00
ConvF:	2.00
Liquid Parameters:	Relative permittivity (real part): 39.40; Conductivity (S/m): 1.43;
Device Position:	Dipole
Area Scan:	dx=15mm dy=15mm, h=5.00mm
Zoom Scan:	5x5x7, dx=8mm dy=8mm dz=5mm, h=5.00mm



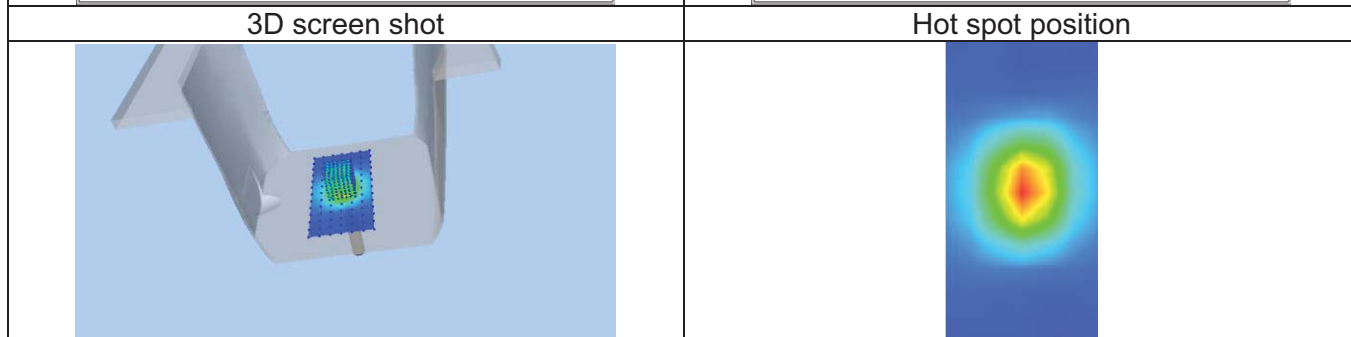
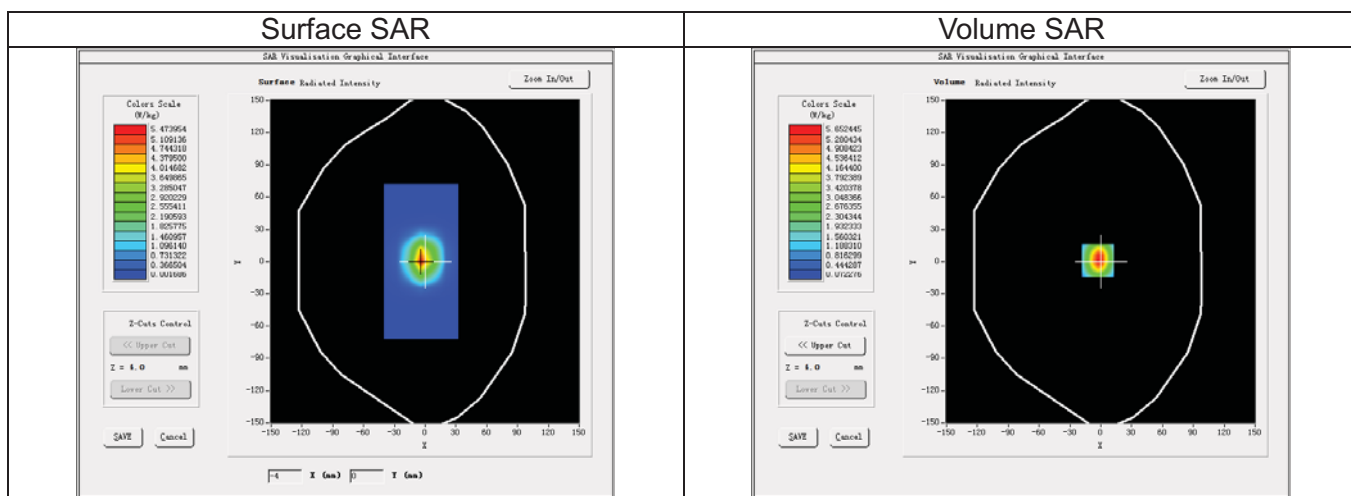
System Performance Check - SID1900-Body

Date of measurement:	Nov. 07, 2017
Signal:	Communication System: CW; Frequency: 1900.00MHz; Duty Cycle: 1:1.00
ConvF:	2.07
Liquid Parameters:	Relative permittivity (real part): 53.41; Conductivity (S/m): 1.56;
Device Position:	Dipole
Area Scan:	dx=15mm dy=15mm, h=5.00mm
Zoom Scan:	5x5x7, dx=8mm dy=8mm dz=5mm, h=5.00mm



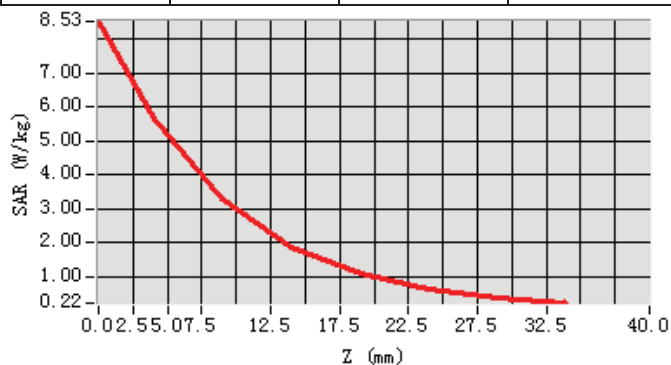
System Performance Check - SID2450-Head

Date of measurement:	Nov. 09, 2017
Signal:	Communication System: CW; Frequency: 2450.00MHz; Duty Cycle: 1:1.00
ConvF:	2.18
Liquid Parameters:	Relative permittivity (real part): 39.42; Conductivity (S/m): 1.78;
Device Position:	Dipole
Area Scan:	dx=12mm dy=12mm, h=5.00mm
Zoom Scan:	7x7x7, dx=5mm dy=5mm dz=5mm, h=5.00mm



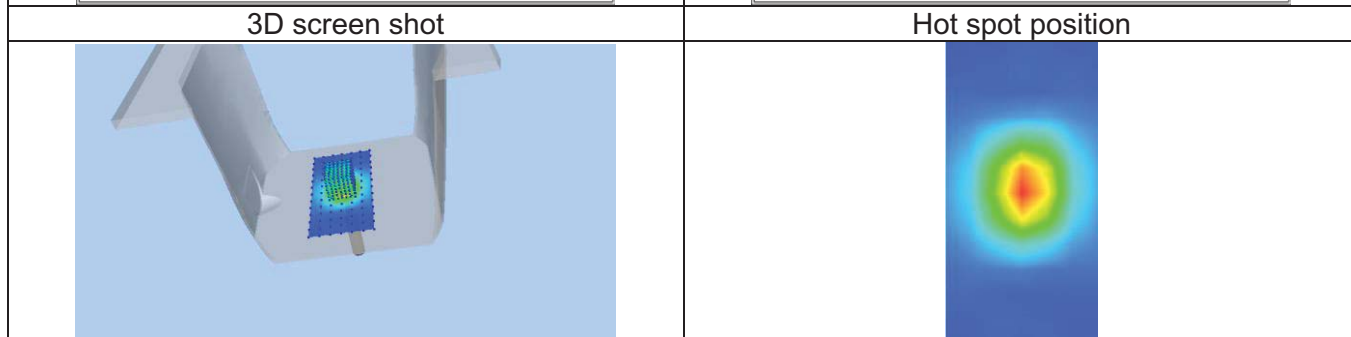
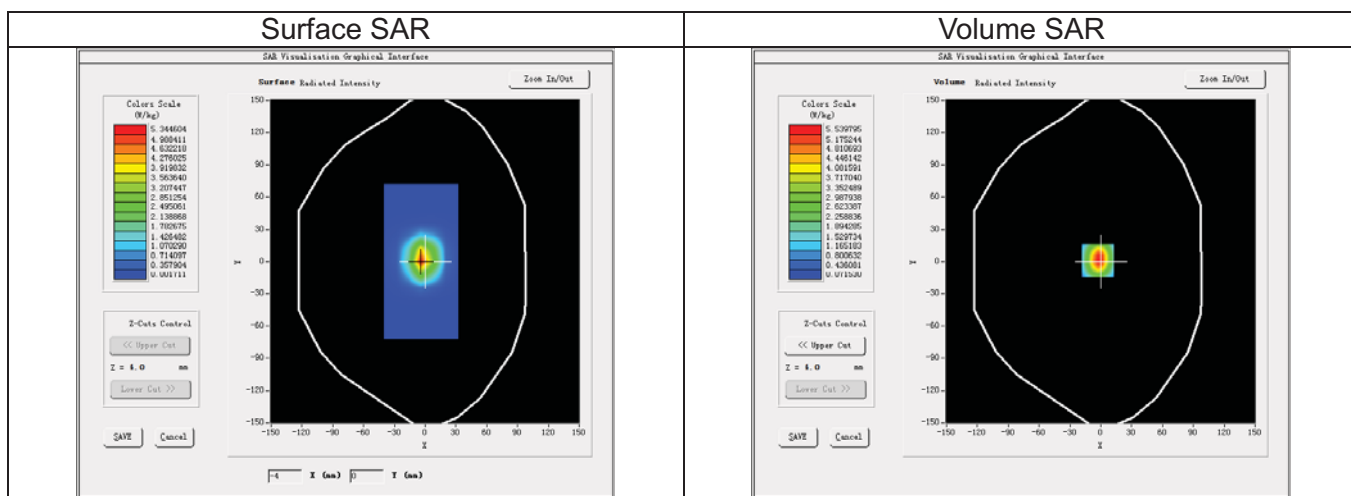
Maximum location: X=-3.00, Y=1.00
SAR Peak: 8.60 W/kg

SAR 1g (W/Kg)	5.148						
SAR 10g (W/Kg)	2.409						
Power Drift (±5%):	0.43						
Z (mm)	0.00	4.00	9.00	14.00	19.00	24.00	29.00
SAR (W/Kg)	8.5344	5.6524	3.2910	1.8603	1.0840	0.6327	0.3696



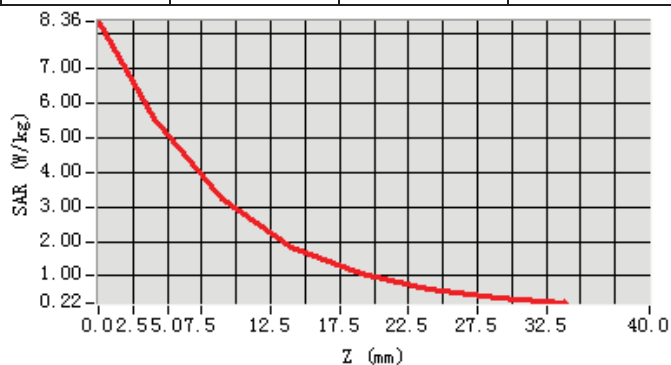
System Performance Check - SID2450-Body

Date of measurement:	Nov. 10, 2017
Signal:	Communication System: CW; Frequency: 2450.00MHz; Duty Cycle: 1:1.00
ConvF:	2.27
Liquid Parameters:	Relative permittivity (real part): 52.28; Conductivity (S/m): 1.96;
Device Position:	Dipole
Area Scan:	dx=12mm dy=12mm, h=5.00mm
Zoom Scan:	7x7x7, dx=5mm dy=5mm dz=5mm, h=5.00mm



Maximum location: X=-3.00, Y=1.00
SAR Peak: 8.42 W/kg

SAR 1g (W/Kg)	5.053						
SAR 10g (W/Kg)	2.361						
Power Drift (±5%):	0.19						
Z (mm)	0.00	4.00	9.00	14.00	19.00	24.00	29.00
SAR (W/Kg)	8.3588	5.5398	3.2309	1.8344	1.0720	0.6228	0.3641

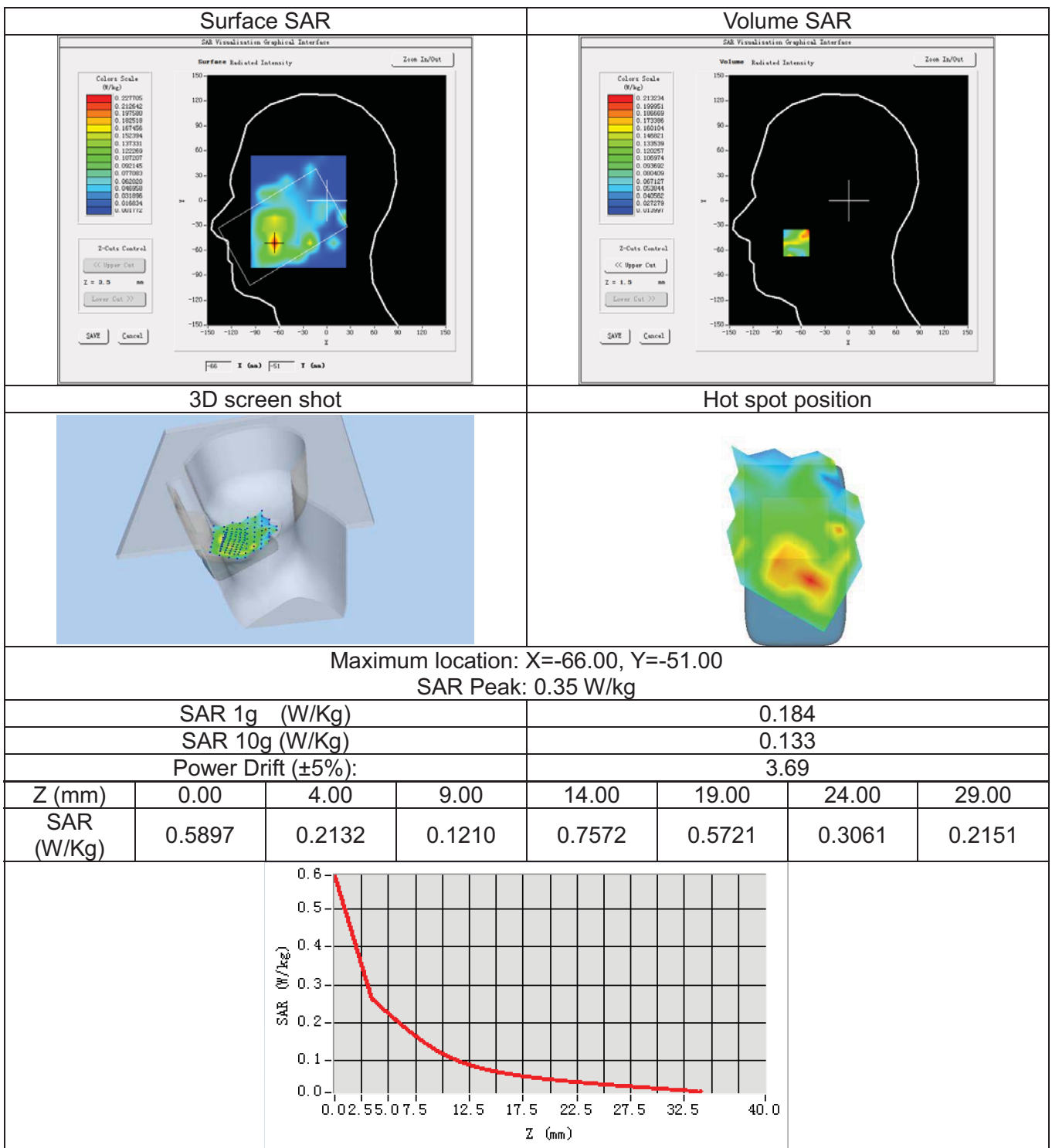


13. Appendix C. Plots of High SAR Measurement

Table of contents
GSM 850 Head
GSM 850 Body
GSM 1900 Head
GSM 1900 Body
WCDMA Band V Head
WCDMA Band V Body
WCDMA Band II Head
WCDMA Band II Body
WLAN 2.4G Head
WLAN 2.4G Body

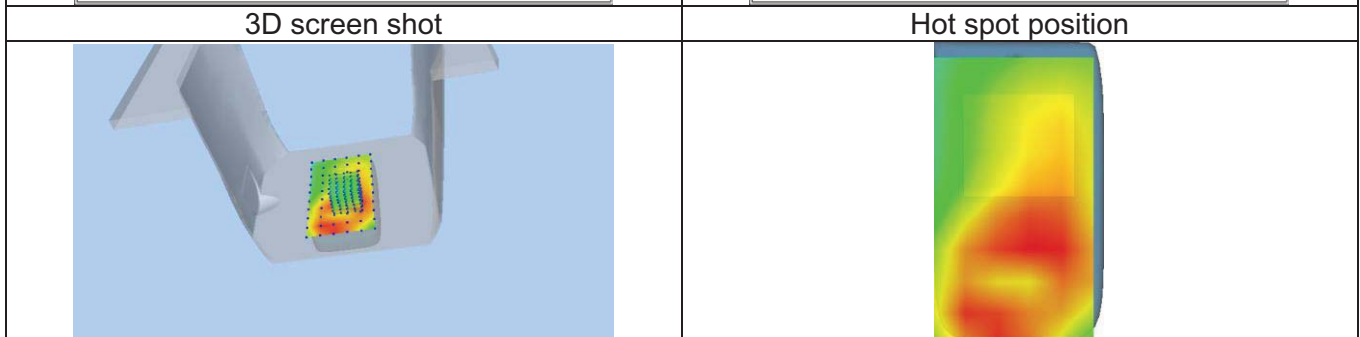
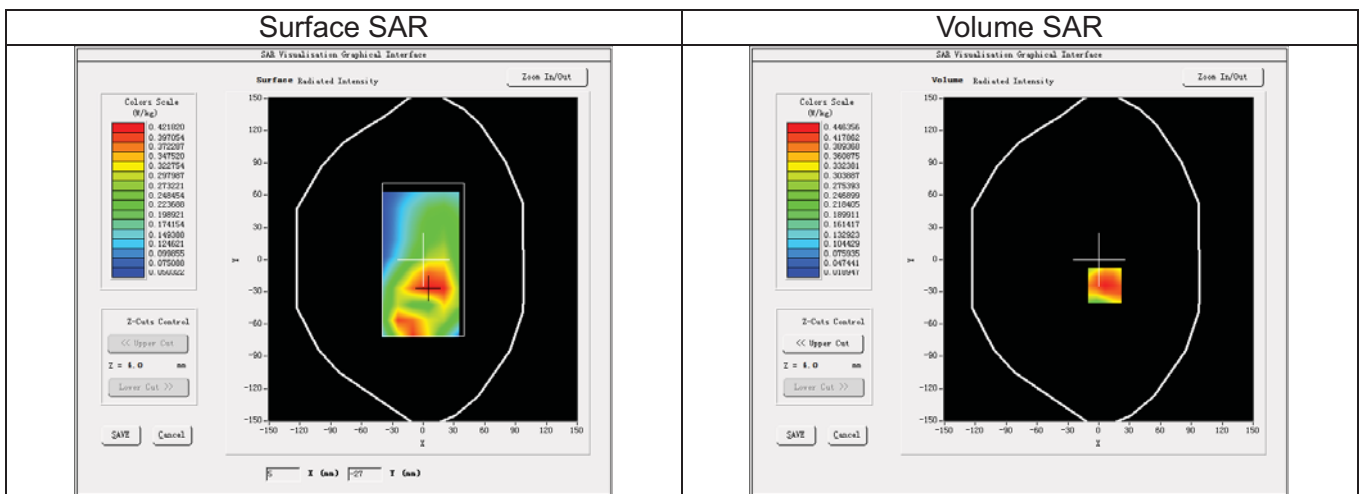
GSM850_GPRS(GMSK 4TS)_Ch128_Right Cheek

Date of measurement:	Nov. 17, 2017
Signal:	Communication System: GPRS(GMSK 4TS); Frequency: 824.20MHz; Duty Cycle: 1:2.08
ConvF:	1.48
Liquid Parameters:	Relative permittivity (real part): 42.97; Conductivity (S/m): 0.88;
Device Position:	Cheek
Area Scan:	dx=15mm dy=15mm, h=5.00mm
Zoom Scan:	5x5x7, dx=8mm dy=8mm dz=5mm, h=5.00mm



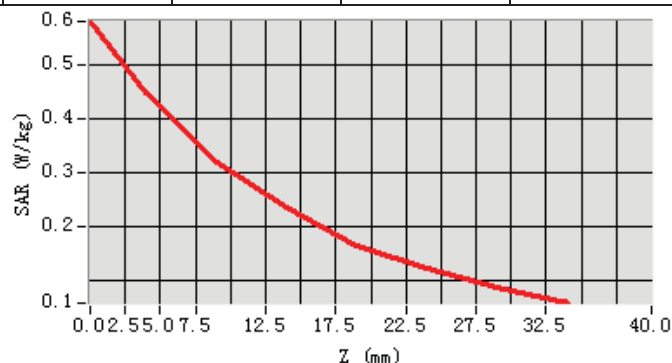
GSM850_GPRS(GMSK 4TS)_Ch128_Front Side_10mm

Date of measurement:	Nov. 16, 2017
Signal:	Communication System: GPRS(GMSK 4TS); Frequency: 824.20MHz; Duty Cycle: 1:2.08
ConvF:	1.53
Liquid Parameters:	Relative permittivity (real part): 55.27; Conductivity (S/m): 0.97;
Device Position:	Body
Area Scan:	dx=15mm dy=15mm, h=5.00mm
Zoom Scan:	5x5x7, dx=8mm dy=8mm dz=5mm, h=5.00mm



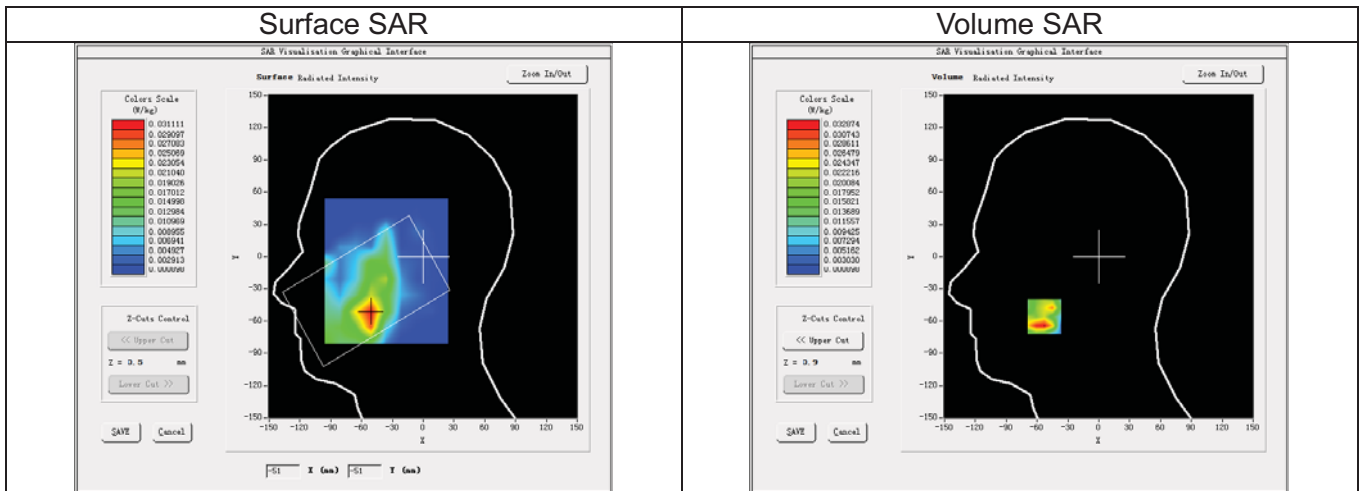
Maximum location: X=6.00, Y=-24.00
SAR Peak: 0.60 W/kg

SAR 1g (W/Kg)		0.435					
SAR 10g (W/Kg)		0.304					
Power Drift (±5%):		0.38					
Z (mm)	0.00	4.00	9.00	14.00	19.00	24.00	29.00
SAR (W/Kg)	0.5805	0.4464	0.3181	0.2330	0.1640	0.1200	0.0857



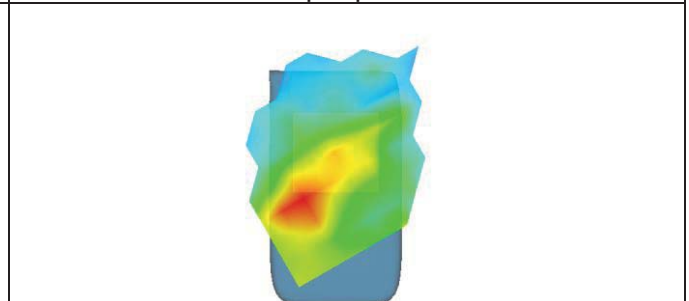
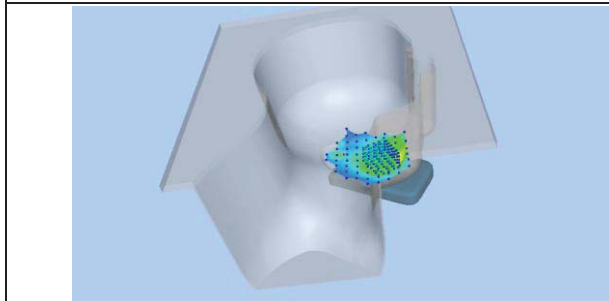
GSM1900_GPRS(GMSK 4TS)_Ch810_Left Cheek

Date of measurement:	Nov. 06, 2017
Signal:	Communication System: GPRS(GMSK 4TS); Frequency: 1909.80MHz; Duty Cycle: 1:2.08
ConvF:	2.00
Liquid Parameters:	Relative permittivity (real part): 39.36; Conductivity (S/m): 1.43;
Device Position:	Cheek
Area Scan:	dx=15mm dy=15mm, h=5.00mm
Zoom Scan:	5x5x7, dx=8mm dy=8mm dz=5mm, h=5.00mm



3D screen shot

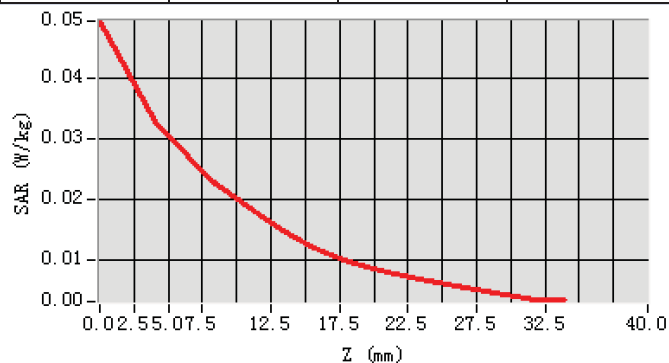
Hot spot position



Maximum location: X=-53.00, Y=-56.00

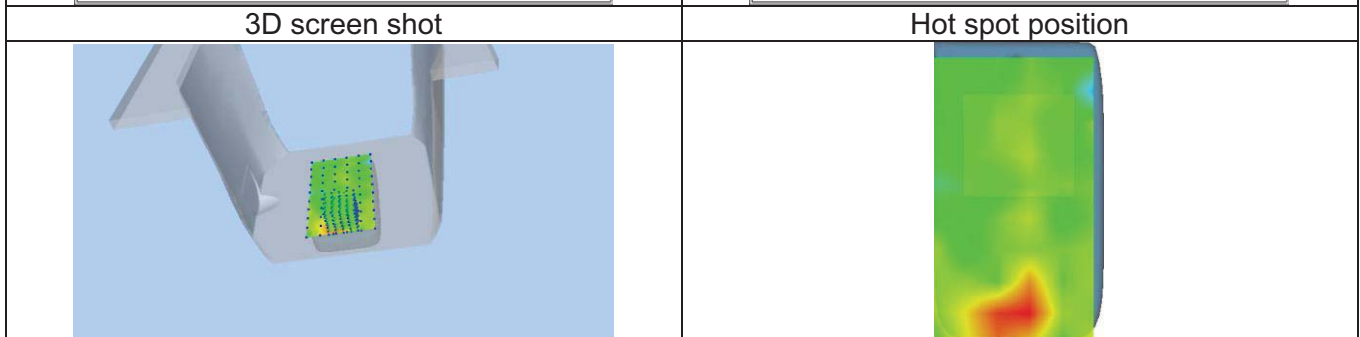
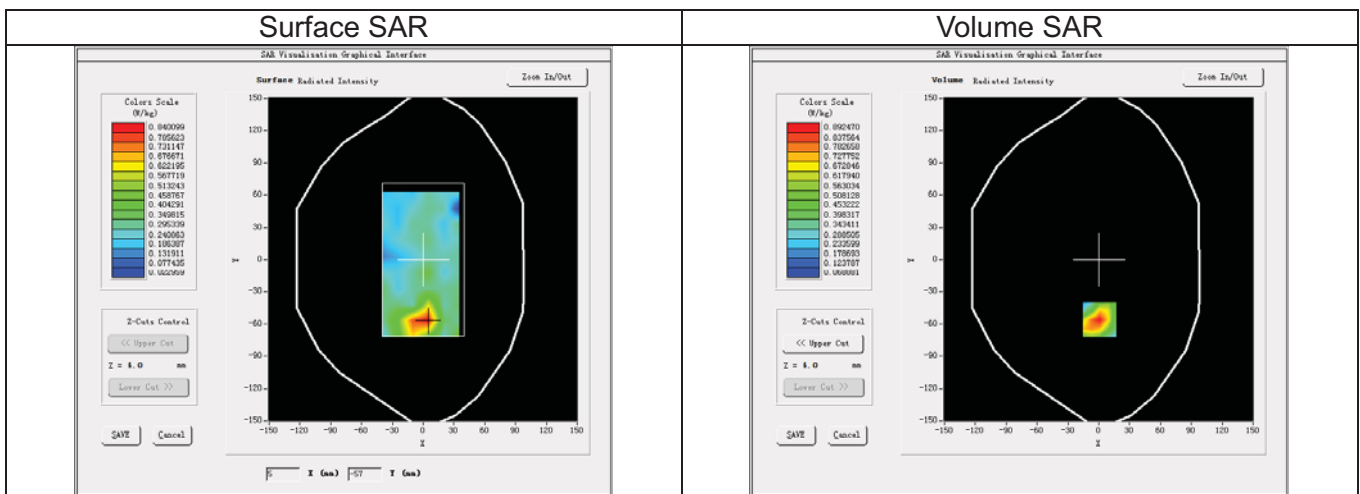
SAR Peak: 0.07 W/kg

SAR 1g (W/Kg)	0.031						
SAR 10g (W/Kg)	0.018						
Power Drift (±5%):	-1.73						
Z (mm)	0.00	4.00	9.00	14.00	19.00	24.00	29.00
SAR (W/Kg)	0.0494	0.0329	0.0213	0.0141	0.0089	0.0063	0.0045



GSM1900_GPRS(GMSK 4TS)_Ch810_Back Side_10mm

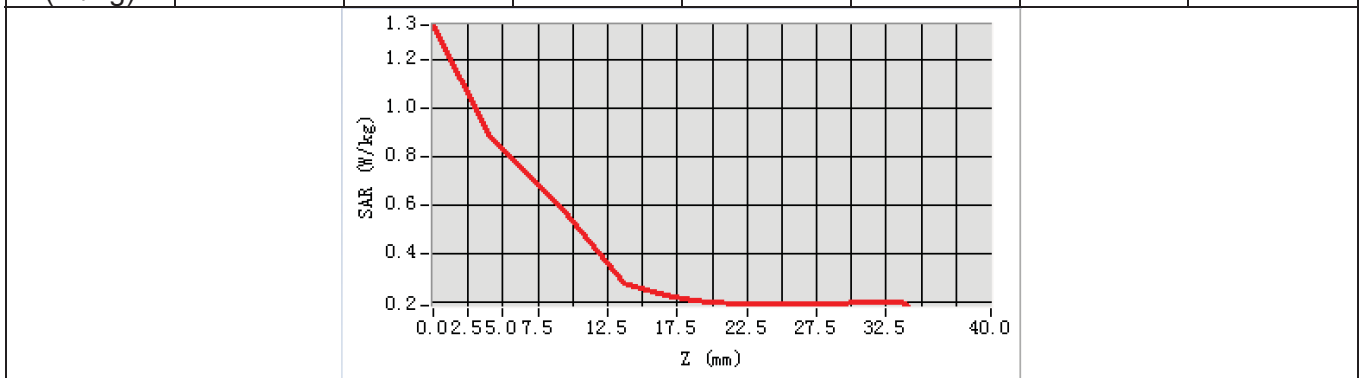
Date of measurement:	Nov. 07, 2017
Signal:	Communication System: GPRS(GMSK 4TS); Frequency: 1909.80MHz; Duty Cycle: 1:2.08
ConvF:	2.07
Liquid Parameters:	Relative permittivity (real part): 53.40; Conductivity (S/m):1.57;
Device Position:	Body
Area Scan:	dx=15mm dy=15mm, h=5.00mm
Zoom Scan:	5x5x7, dx=8mm dy=8mm dz=5mm, h=5.00mm



Maximum location: X=1.00, Y=-56.00
SAR Peak: 1.42 W/kg

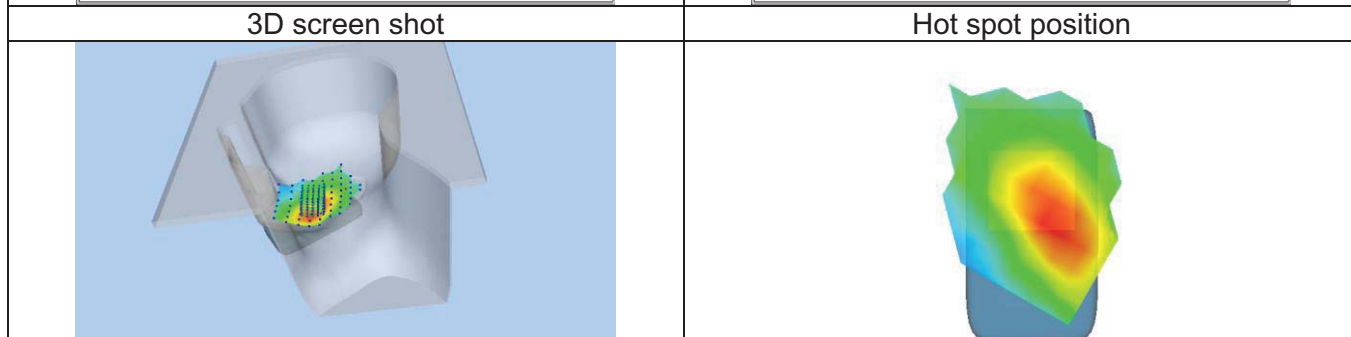
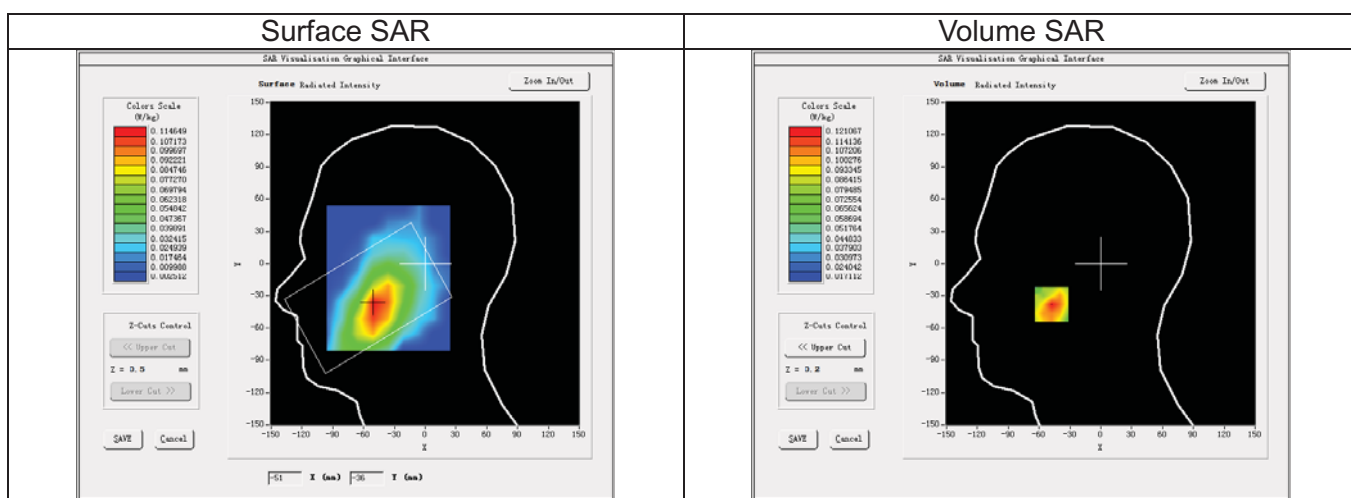
SAR 1g (W/Kg)	0.854
SAR 10g (W/Kg)	0.512
Power Drift (±5%):	-0.81

Z (mm)	0.00	4.00	9.00	14.00	19.00	24.00	29.00
SAR (W/Kg)	1.3395	0.8925	0.5939	0.2536	0.2099	0.1696	0.1333



WCDMA Band V_RMC 12.2Kbps_Ch4182_Right Cheek

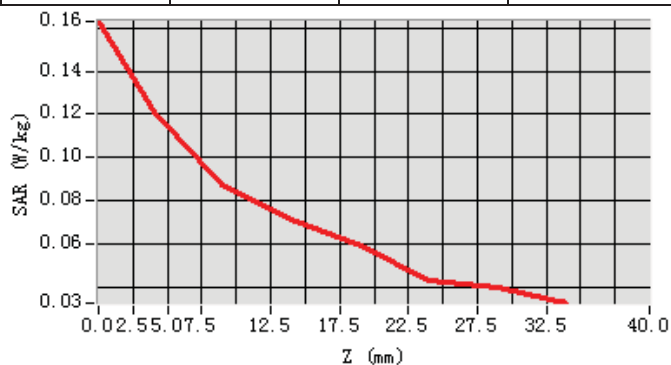
Date of measurement:	Nov. 17, 2017
Signal:	Communication System: WCDMA-FDD(WCDMA); Frequency: 836.4MHz; Duty Cycle: 1:1.00
ConvF:	1.48
Liquid Parameters:	Relative permittivity (real part): 42.81; Conductivity (S/m): 0.89;
Device Position:	Cheek
Area Scan:	dx=15mm dy=15mm, h=5.00mm
Zoom Scan:	5x5x7, dx=8mm dy=8mm dz=5mm, h=5.00mm



Maximum location: X=-48.00, Y=-38.00

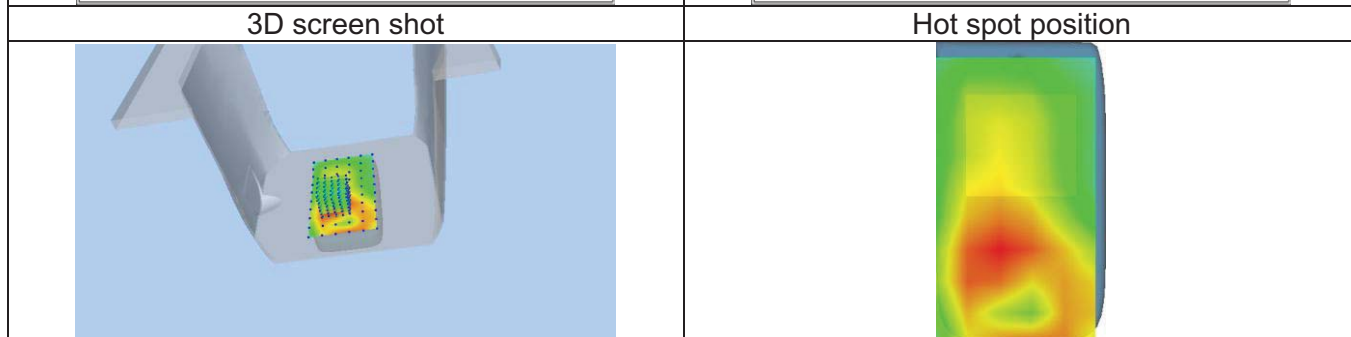
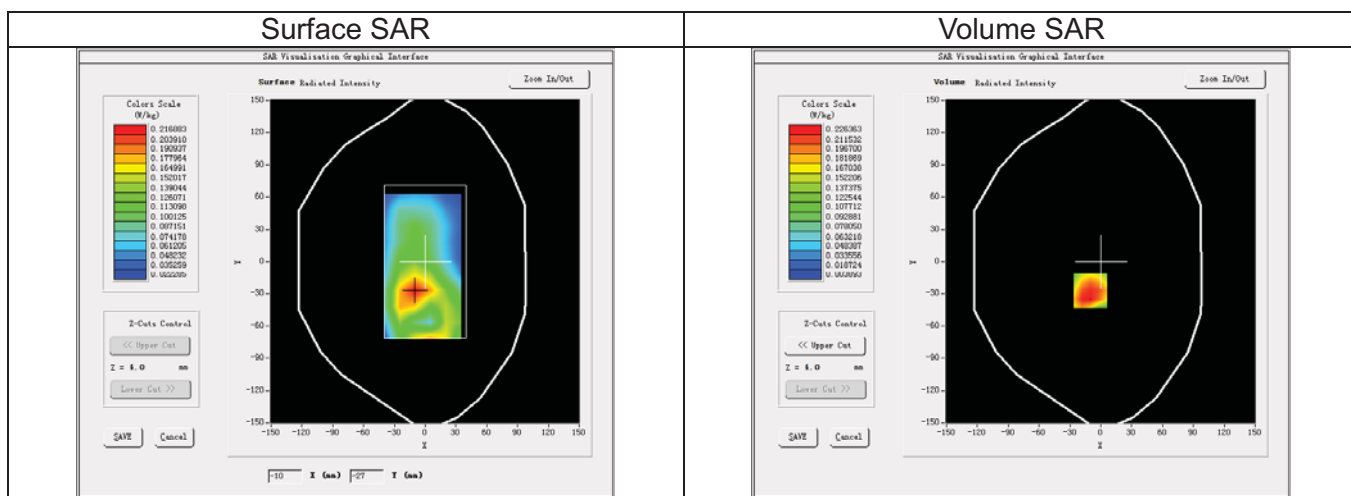
SAR Peak: 0.16 W/kg

SAR 1g (W/Kg)	0.113						
SAR 10g (W/Kg)	0.082						
Power Drift (±5%):	-3.07						
Z (mm)	0.00	4.00	9.00	14.00	19.00	24.00	29.00
SAR (W/Kg)	0.1630	0.1211	0.0876	0.0717	0.0594	0.0432	0.0399



WCDMA Band V_RMC 12.2Kbps_Ch4182_Back Side_10mm

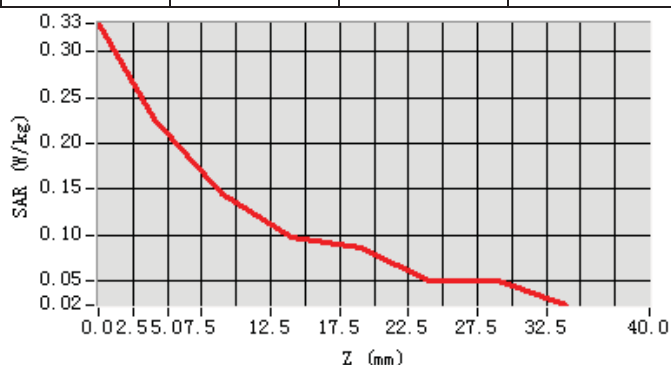
Date of measurement:	Nov. 16, 2017
Signal:	Communication System: WCDMA-FDD(WCDMA); Frequency: 836.40MHz; Duty Cycle: 1:1.00
ConvF:	1.53
Liquid Parameters:	Relative permittivity (real part): 55.19; Conductivity (S/m): 0.99;
Device Position:	Body
Area Scan:	dx=15mm dy=15mm, h=5.00mm
Zoom Scan:	5x5x7, dx=8mm dy=8mm dz=5mm, h=5.00mm



Maximum location: X=-10.00, Y=-27.00

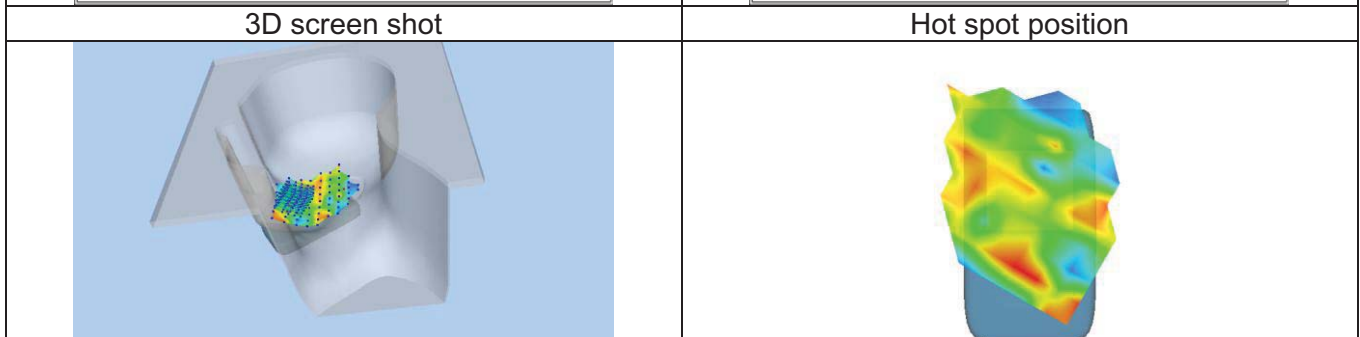
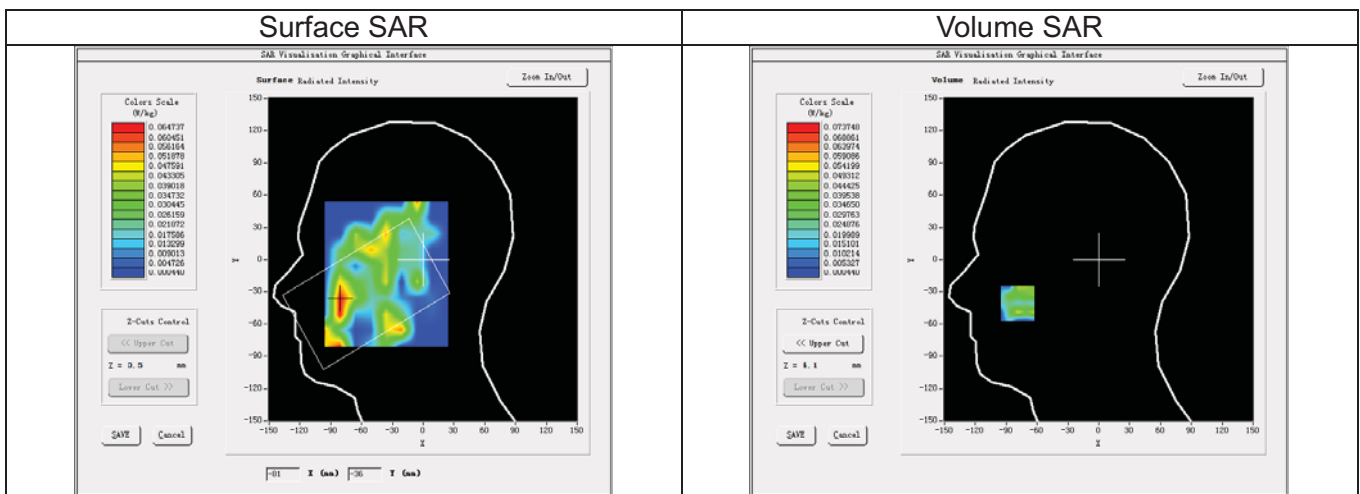
SAR Peak: 0.32 W/kg

SAR 1g (W/Kg)	0.225						
SAR 10g (W/Kg)	0.147						
Power Drift (±5%):	3.61						
Z (mm)	0.00	4.00	9.00	14.00	19.00	24.00	29.00
SAR (W/Kg)	0.3306	0.2264	0.1453	0.0983	0.0862	0.0511	0.0505



WCDMA Band II_RMC 12.2Kbps_Ch9262_Right Cheek

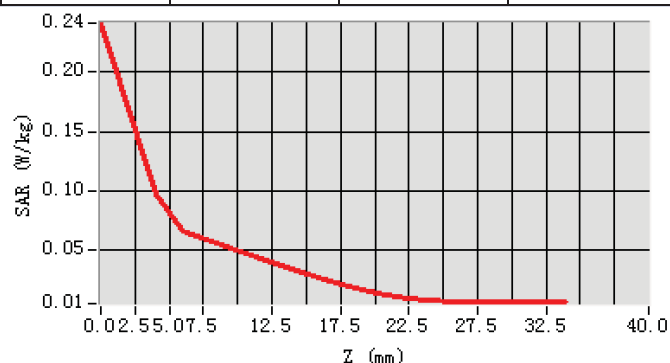
Date of measurement:	Nov. 06, 2017
Signal:	Communication System: WCDMA-FDD(WCDMA); Frequency: 1852.40MHz; Duty Cycle: 1:1.00
ConvF:	2.00
Liquid Parameters:	Relative permittivity (real part): 39.61; Conductivity (S/m): 1.40;
Device Position:	Cheek
Area Scan:	dx=15mm dy=15mm, h=5.00mm
Zoom Scan:	5x5x7, dx=8mm dy=8mm dz=5mm, h=5.00mm



Maximum location: X=-79.00, Y=-41.00

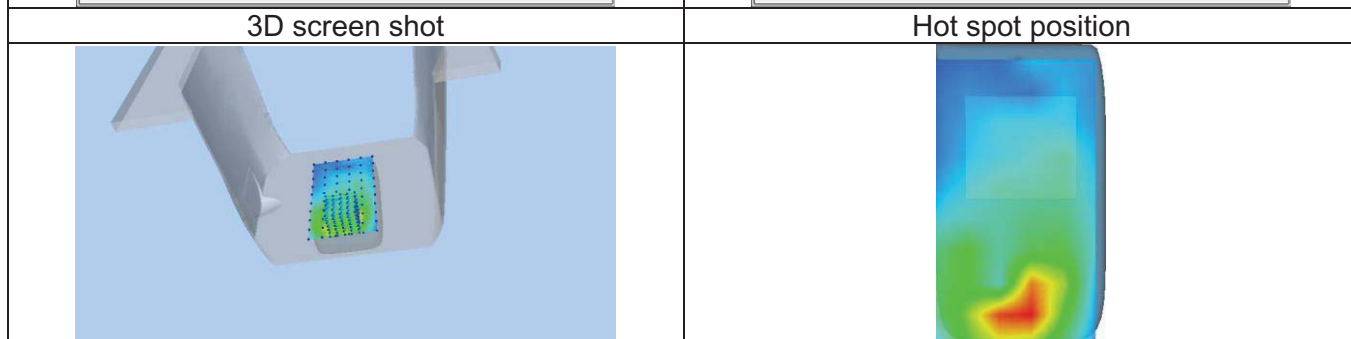
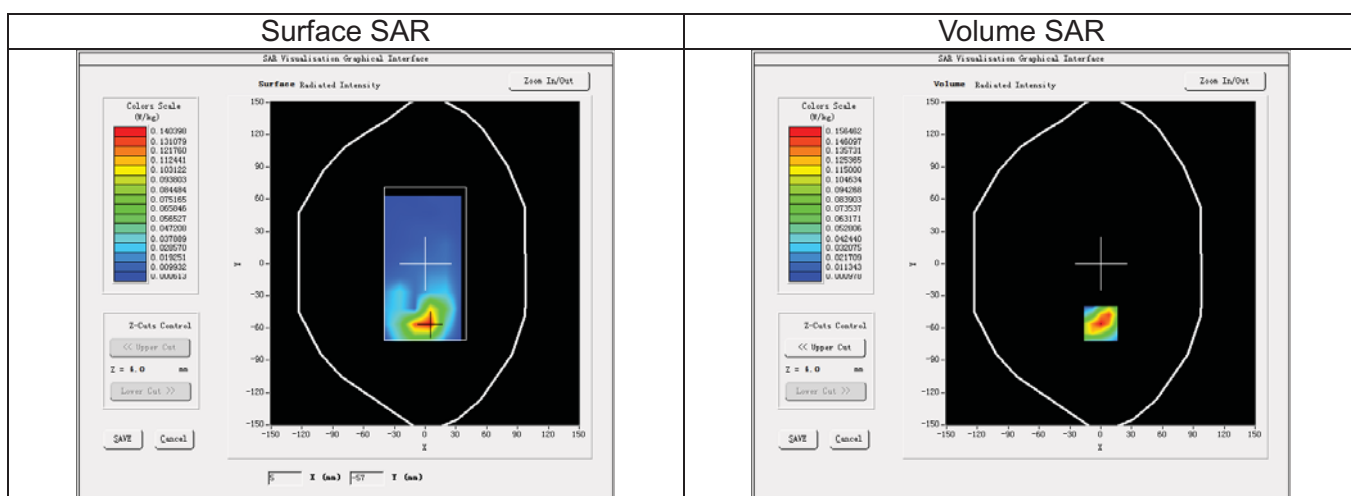
SAR Peak: 0.13 W/kg

SAR 1g (W/Kg)		0.047					
SAR 10g (W/Kg)		0.018					
Power Drift (±5%):		-4.29					
Z (mm)	0.00	4.00	9.00	14.00	19.00	24.00	29.00
SAR (W/Kg)	0.2413	0.0971	0.0522	0.0340	0.0172	0.0121	0.0105



WCDMA Band II_RMC 12.2Kbps_Ch9262_Back Side_10mm

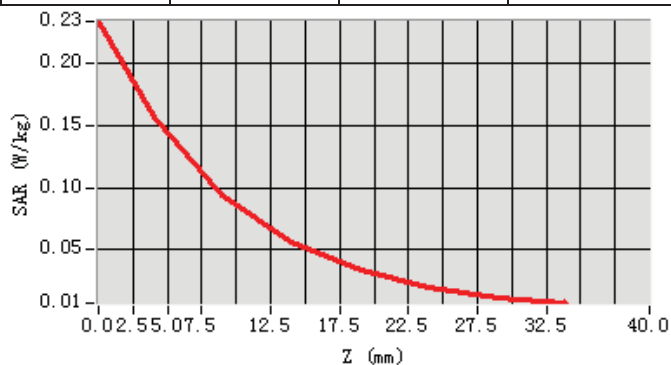
Date of measurement:	Nov. 07, 2017
Signal:	Communication System: WCDMA-FDD(WCDMA); Frequency: 1852.40MHz; Duty Cycle: 1:1.00
ConvF:	2.07
Liquid Parameters:	Relative permittivity (real part): 53.60; Conductivity (S/m): 1.53;
Device Position:	Body
Area Scan:	dx=15mm dy=15mm, h=5.00mm
Zoom Scan:	5x5x7, dx=8mm dy=8mm dz=5mm, h=5.00mm



Maximum location: X=0.00, Y=-56.00

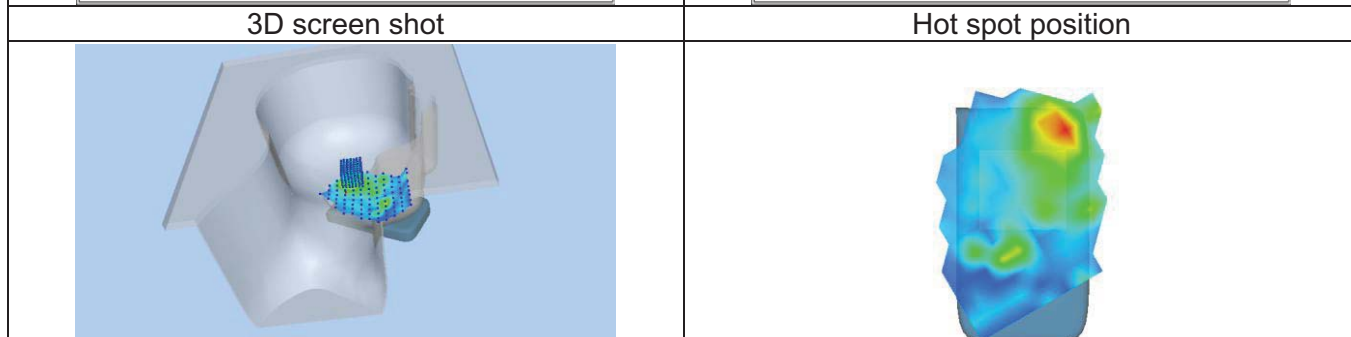
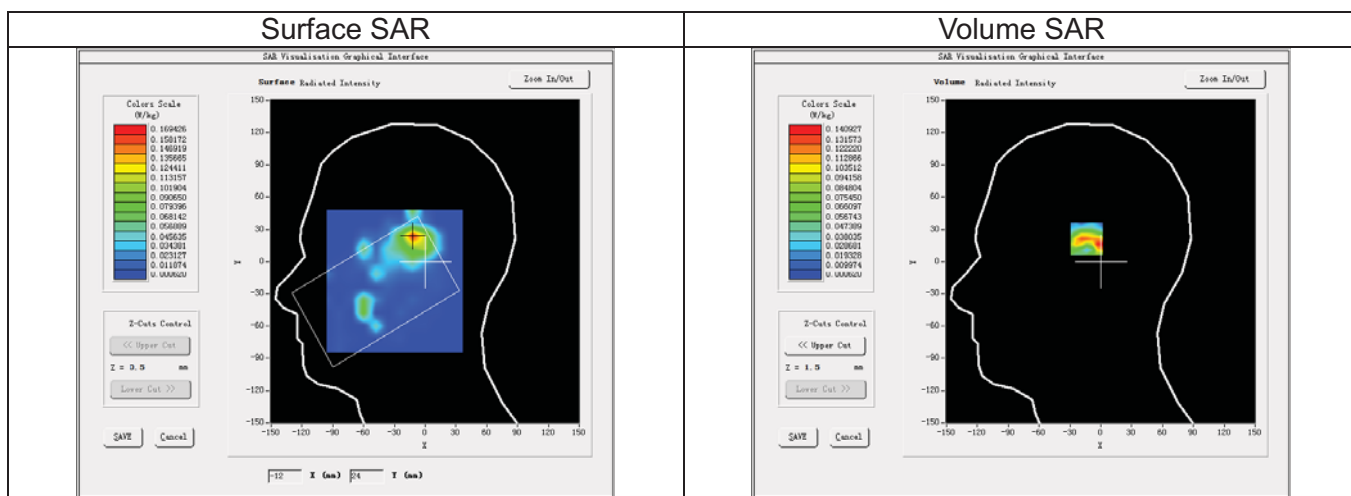
SAR Peak: 0.25 W/kg

SAR 1g (W/Kg)		0.147					
SAR 10g (W/Kg)		0.075					
Power Drift (±5%):		4.84					
Z (mm)	0.00	4.00	9.00	14.00	19.00	24.00	29.00
SAR (W/Kg)	0.2330	0.1565	0.0933	0.0560	0.0335	0.0200	0.0121



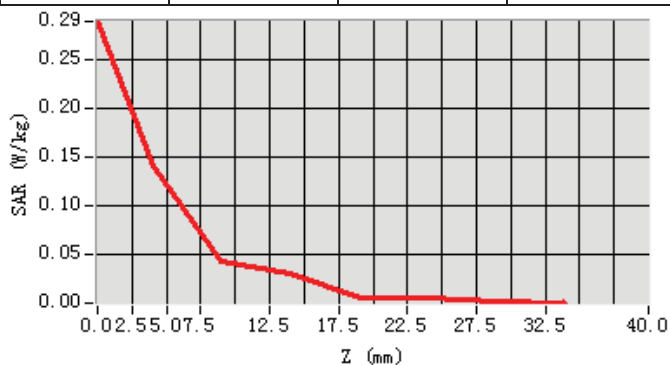
WLAN 2.4G_802.11b_Ch1_Left Cheek

Date of measurement:	Nov. 09, 2017
Signal:	Communication System: WLAN 802.11a/b/g/n/ac; Frequency: 2412.00MHz; Duty Cycle: 1:1.00
ConvF:	2.18
Liquid Parameters:	Relative permittivity (real part): 39.51; Conductivity (S/m): 1.75;
Device Position:	Cheek
Area Scan:	dx=12mm dy=12mm, h=5.00mm
Zoom Scan:	7x7x7, dx=5mm dy=5mm dz=5mm, h=5.00mm



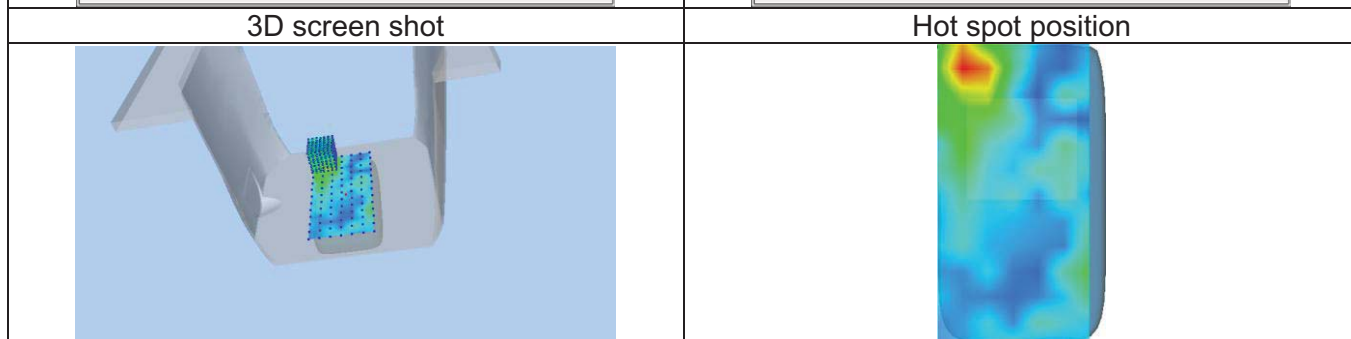
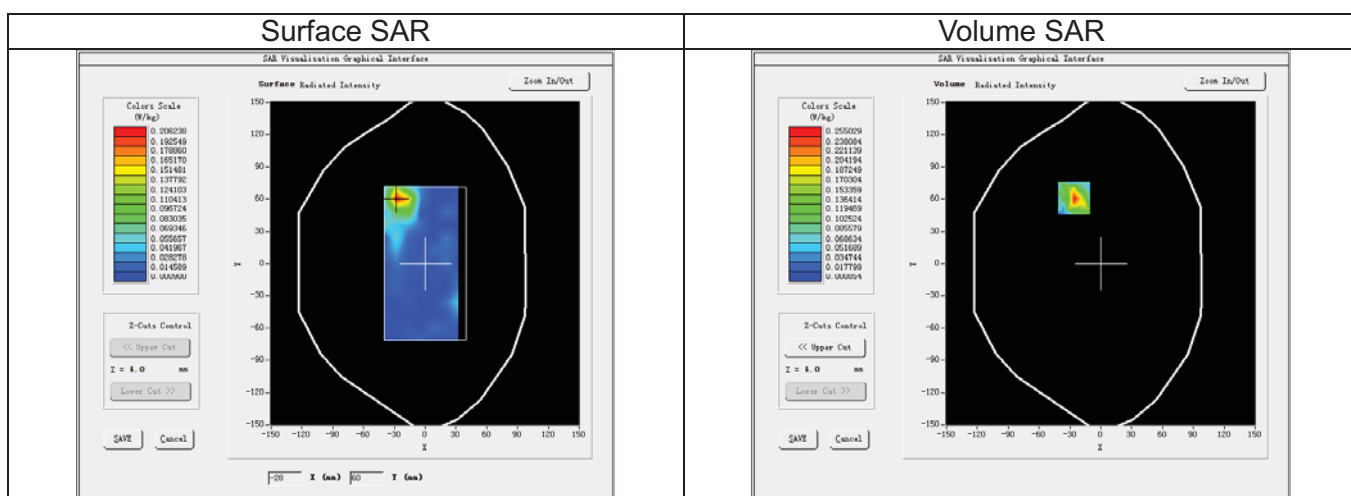
Maximum location: X=-12.00, Y=23.00
SAR Peak: 0.25 W/kg

SAR 1g (W/Kg)	0.124						
SAR 10g (W/Kg)	0.052						
Power Drift (±5%):	-4.48						
Z (mm)	0.00	4.00	9.00	14.00	19.00	24.00	29.00
SAR (W/Kg)	0.2888	0.1409	0.0429	0.0312	0.0058	0.0057	0.0026



WLAN 2.4G_802.11b_Ch1_Back Side_10mm

Date of measurement:	Nov. 10, 2017
Signal:	Communication System: WLAN 802.11a/b/g/n/ac; Frequency: 2412.00MHz; Duty Cycle: 1:1.00
ConvF:	2.27
Liquid Parameters:	Relative permittivity (real part): 52.48; Conductivity (S/m): 1.91;
Device Position:	Body
Area Scan:	dx=12mm dy=12mm, h=5.00mm
Zoom Scan:	7x7x7, dx=5mm dy=5mm dz=5mm, h=5.00mm



Maximum location: X=-26.00, Y=61.00

SAR Peak: 0.55 W/kg

SAR 1g (W/Kg)	0.225						
SAR 10g (W/Kg)	0.100						
Power Drift (±5%):	-0.20						
Z (mm)	0.00	4.00	9.00	14.00	19.00	24.00	29.00
SAR (W/Kg)	0.5564	0.2550	0.0952	0.1037	0.0625	0.0523	0.0070

