



**WI-FI SECURITY DOME CAMERA**  
**QUICK START GUIDE**  
ENGLISH

# WELCOME!

Congratulations on your latest purchase and welcome to the Q-See family. This guide includes everything you will need to help get your camera up and running right out of the box. We are excited to have you on board and thank you for choosing Q-See!



# WHAT'S INCLUDED



**Also included:** 1 power supply & 1 weather seal (seal is for custom installs)

# FEATURES



## **BEST IN CLASS**

Setting the resolution bar higher than 1080p



## **NIGHT VISION**

See what's happening in pitch dark



## **EASY SETUP**

Less fuss, more monitoring



## **MOTION ALERT**

Get alerts about important activity



## **MICRO SD CARD SUPPORT**

Internal back up memory for video storage



## **ADD-ON**

Expand your current surveillance system with ease

# GET CONNECTED

Find the desired location for your camera to be placed. If you are going to be mounting the camera, please use the included mounting hardware to secure the camera firmly to the wall. **Please make sure to go through all steps and test the system completely before mounting the cameras.**

- Slide the included rubber grommet onto the antenna stem of the camera
- Screw the supplied Wi-Fi antenna on to the dome camera
- Plug in the included power supply to a surge protector and plug in the power supply to the Wi-Fi dome camera.

You are now ready to setup the camera. Once the camera is plugged in you may see a red LED power indicator ● light up. Later when connected to Wi-Fi this LED should turn green ●.





# STEP 1

## REGISTRATION

Before installing, please register your device on the Q-See Support Portal at [www.q-see.com/register](http://www.q-see.com/register) to receive critical updates and support for your system. Registering will also help us to assist you with any technical or warranty issues if ever necessary.

**Please be sure to keep a record of your model number(s) and to save this guide, as you will need this information if you are ever in need of technical or warranty support.**

**NOTE:** Your username and password used to register your device are not the same as those you use to log in to your system. Please write down your username, password, and model number(s) in the spaces provided below:

Username: \_\_\_\_\_

Password: \_\_\_\_\_

Model #: \_\_\_\_\_




# STEP 2

## DOWNLOAD & INSTALL THE QC VIEW APP

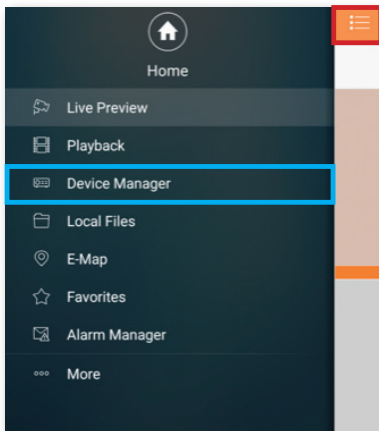
**NOTE: Ensure that your mobile device is connected to the Wi-Fi network you wish to use for your camera.**



Download the **QC** View App from the App Store on your mobile device. Once the App has been installed select the **Menu**  button in the top left corner, followed by [Device Manager](#).

**NOTE:** If you already have a Wi-Fi NVR this camera will automatically try to connect to it. Start using the NVR quick start guide to complete setup. If you would like to use this as a standalone device, disconnect or power off your Wi-Fi NVR before proceeding.

*\*All screenshots in guide are from QC View app on iOS.*



# STEP 3

## ADD A NEW DEVICE

In Device Manager, Click “+” to add a new device. Select “**Wi-Fi configuration**” and create a name for your camera. Tap the **QR code icon** in the SN field and then scan the QR code located on the back camera panel (see photo below). Once the QR code has been scanned, complete the remaining username and password fields and hit next:

**Username:** admin  
**Password:** admin

A screenshot of a mobile application's "WiFi configuration" screen. The screen has an orange header with a back arrow and the title "WiFi configuration". Below the header are several rows of configuration options:

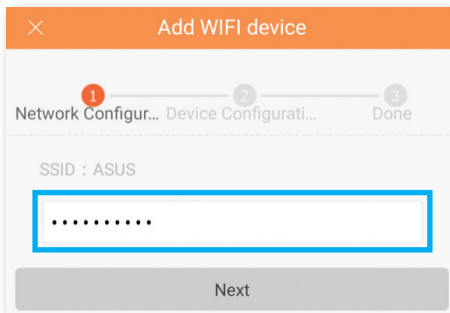
- Name:** WiFi Camera
- SN:** 1M04B4DYAZ00014. To the right of the SN field is a QR code icon, which is highlighted with a red square.
- Username:** admin
- Password:** ..... This row and the Username row are enclosed in a blue rectangular border.
- Live Preview:** Extra >
- Playback:** Extra >

At the bottom of the screen is a grey button labeled "Next".

# STEP 4

## ADD A WI-FI DEVICE

Configure the network settings by entering the [password](#) of your Wi-Fi network.



×

Add WIFI device

1 Network Configur... 2 Device Configurati... 3 Done

SSID : ASUS

.....

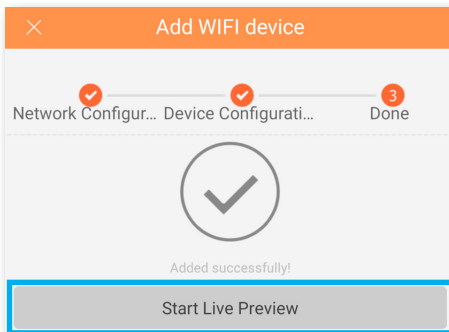
Next

**NOTE:** The Wi-Fi network should be the same one used by your mobile device.

# STEP 5

## START LIVE PREVIEW

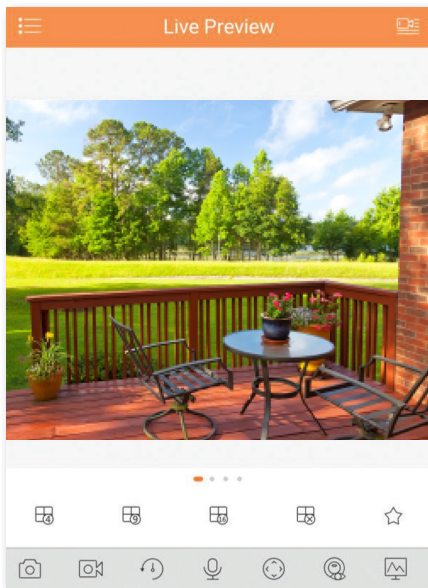
Once your Device has been added successfully, select [Start Live Preview](#) to view the feed from your camera.



# STEP 6

## VIEW THE LIVE VIDEO FEED

Your camera has been set up successfully. You can now access your camera feed anytime and anywhere using the QC View App.

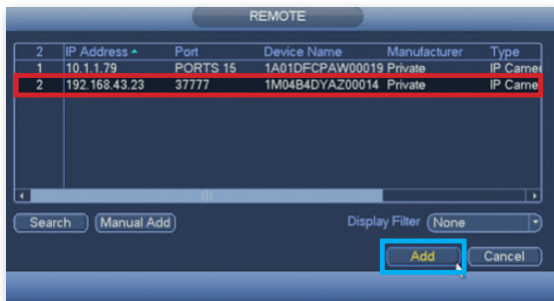


# STEP 7

## ADD TO AN EXISTING QC NVR SYSTEM

If you would like to add this camera to your existing QC Series NVR, login to your NVR and go to Remote Devices. **Select your camera** from the device list and click **Add**. The camera feed will appear on your NVR. The NVR has to be connected to the same network as your mobile device for the initial setup process.

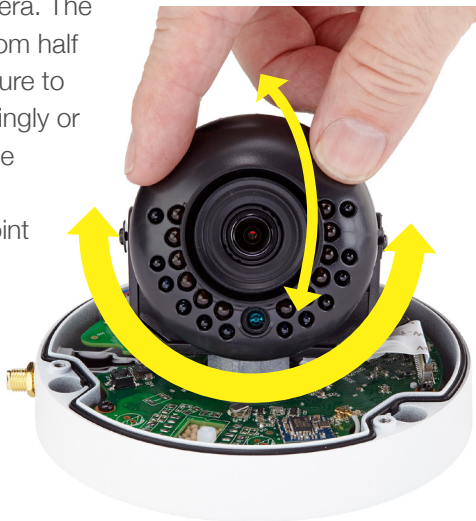
Visit [www.q-see.com/support](http://www.q-see.com/support) to verify if your system is compatible.



*\*This screenshot is from a QC Series NVR.*

# LENS ADJUSTMENT

The lens of your dome camera can be adjusted based on where you are mounting it by gently loosening its screw and rotating the angle and orientation of the camera. The LEDs denote the bottom half of the camera so be sure to rotate the lens accordingly or the camera view will be sideways. The center blue sensor should point directly down when mounted.



# ADDITIONAL FEATURES

## RESET BUTTON

The reset button on your dome camera is located under the lens cover that can be removed with the included wrench. If you wish to change the existing Wi-Fi network to a different network, while the camera is powered on, hold the reset button for 15 seconds and setup your camera again.



## MEMORY SLOT

The micro SD memory card slot is located under the lens cover that can be removed with the included wrench. Slide the slot open, place in a memory card, close the slot and lock the card into position. Some units will include an SD card.





## NETWORK CABLE

Please do not worry about the additional network cable on your dome camera. This network cable can alternatively be used to hard-wire the camera using an Ethernet cable instead of a Wi-Fi connection. Please make sure that this cable is never exposed to moisture.



# WARRANTY & SUPPORT

Q-See is always here to answer your questions and take your valued suggestions. Visit us at [www.q-see.com/support](http://www.q-see.com/support) for 24/7 online support and access to our Support Portal.

**DISCLAIMER:** Although Q-See has made every effort to ensure that the information in this guide was correct at the time of printing, Q-See does not assume any liability to any party for any loss, damage, or disruption caused by any errors, omissions, or typos that may occur.

## Regulatory Information

### FCC Information

This device complies with Part 15 of the FCC Rules. Operation is subject to the following two conditions:

- (1) This device may not cause harmful interference, and
- (2) This device must accept any interference received, including interference that may cause undesired operation.

Attention that changes or modification not expressly approved by the party responsible for compliance could void the user's authority to operate the equipment.

**Note:** This product has been tested and found to comply with the limits for a Class B digital device, pursuant to Part 15 of the FCC Rules. These limits are designed to provide reasonable protection against harmful interference in a residential installation. This product generates, uses, and can radiate radio frequency energy and, if not installed and used in accordance with the instructions, may cause harmful interference to radio communications. However, there is no guarantee that interference will not occur in a particular installation. If this product does cause harmful interference to radio or television reception, which can be determined by turning the equipment off and on, the user is encouraged to try to correct the interference by one or more of the following measures:

- Reorient or relocate the receiving antenna.
- Increase the separation between the equipment and receiver.
- Connect the equipment into an outlet on a circuit different from that to which the receiver is connected.
- Consult the dealer or an experienced radio/TV technician for help.

This equipment should be installed and operated with a minimum distance 20cm between the radiator and your body.

1.2.51.32.Tgz001-000

Check online at [www.Q-See.com](http://www.Q-See.com) for more information on our terms of service.



Qsee®  
Life in Focus

GQCWD-E-V2

Rev. 5/1/17, QCW4, QCK81, QC826, QC838, QC838B, QC838E, QC858,  
QC8116, QC8816, QC8832, QC8916, QC8932