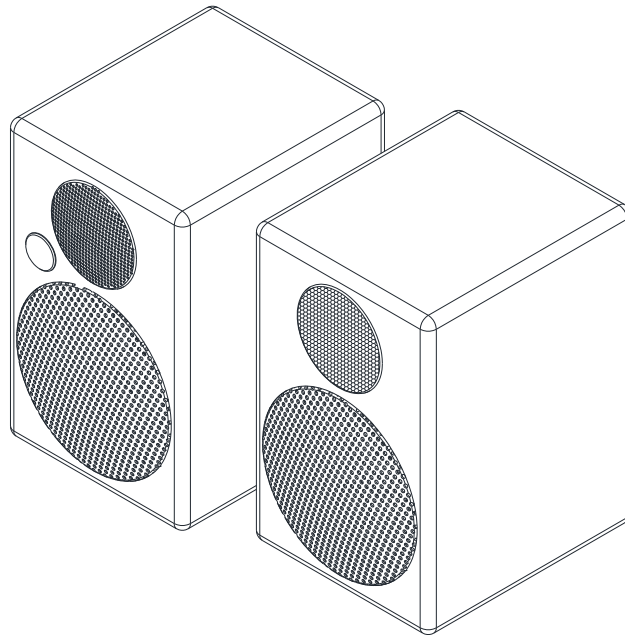


TAPS1L



USER MANUAL

TAPS1L



Contents

02	CONTENTS
03	SAFETY
04	INFORMATION
05	FRONT AND REAR PANELS
06	REMOTE CONTROL
07	CONNECTING YOUR SPEAKERS
08	BLUETOOTH FUNCTION
09	USE WITH IPOD/MP3 PLAYER
10	CONNECT TV, DVD, CONSOLE, PC
11	LIMITED WARRANTY
12	PHONO
	SPECIFICATIONS

TAPS1L

Congratulations on your new TAPS1L ACTIVE MONITORS.
Please take a moment to read this manual.
Enjoy

Safety

Safety Instructions

Please store this instruction manual for future reference.

- Do not use this product near water or moisture. Clean only with a dry cloth. Unplug this product from the wall outlet before cleaning.
- Place the unit on a solid surface. Do not block any ventilation openings.
- Do not put it in a closed bookcase or a cabinet that may keep air from flowing through its ventilation openings.
- Do not install near any heat sources, such as radiators, heat registers, stoves or other appliances that produce heat.
- Protect the power cord from being walked on or pinched, particularly at plugs and the point where they exit from the product.
- Servicing is required when the product has been damaged. Do not attempt to service this product yourself. Opening or removing covers may expose you to dangerous voltages or other hazards. Please contact the manufacturer to be referred to an authorized service center near you.
- To prevent risk of fire or electric shock, avoid over loading wall outlets, extension cords, or integral convenience receptacles.
- Do not let objects or liquids enter the product.
- Use proper power sources. Plug the product into a proper power source, as described in the operating instructions or as marked on the product.



TAPS1L



Information

Unpacking

These speakers were carefully tested and inspected during production and before packaging and shipping. After unpacking please check for any damage. It is rare that a unit is damaged during shipping, but if this does happen contact your retailer immediately.

We recommend that you keep the original carton and packing material for future shipping.

Recommended Speaker Setup

Correct speaker placement has a huge impact on sound quality. There are many different theories, but all rooms and tastes are different so it's impossible to specify a correct placement. We do suggest you experiment with a few different locations see what is best for you.

For the best bass response on, we recommend that you keep a minimum distance of 20–25 cm between the speakers and the rear wall. For height, position the speakers with the tweeters at eye level of your most common listening position.

Speaker Conditioning and Break-in

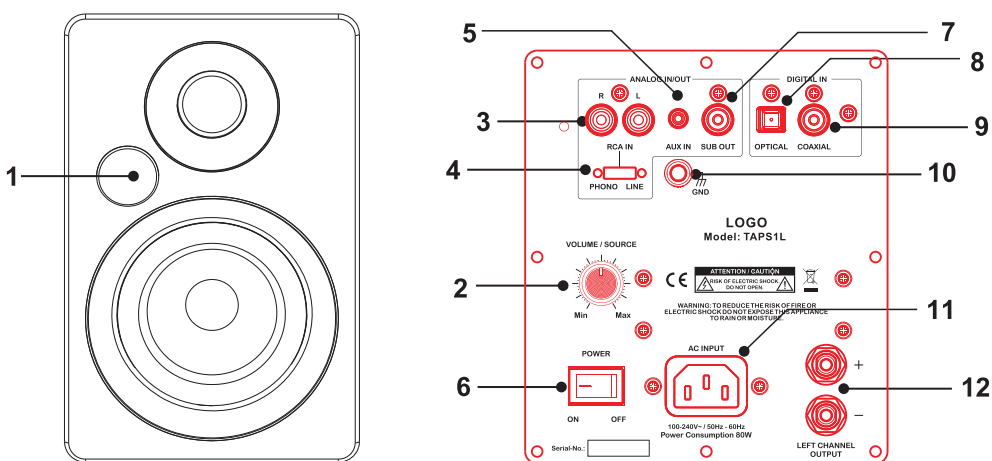
Although a break-in period is not required, we recommend that you play between 24 to 48 hours of music through the speakers before doing any critical listening or speaker placement.

Speaker Cleaning

We don't recommend using any solvents or cleaners on cabinets or speaker drive units. Just wipe down with a soft, dry cloth.

TAPS1L

Front and Rear panels



1 Status LEDs & IR Receiver Window:

- Red: Standby or Auto-Standby (after 30 minutes without playing)
- Blinking RED: Mute
- White: Optical/Coaxial Input
- Green: RCA Input (Phono/Aux Input)
- Orange: 3.5 Jack Input (Aux In)
- Blue: Bluetooth

2 Volume Up/Down & Input Select:

Short push to toggle inputs, long push to Pair

3 RCA Input:

4 RCA Input Switch (Phono/Aux):

5 3.5 Jack Input (Aux In)

6 Power On / Off:

7 SUB Out:

8 Optical Digital Audio Input:

9 Coaxial Input

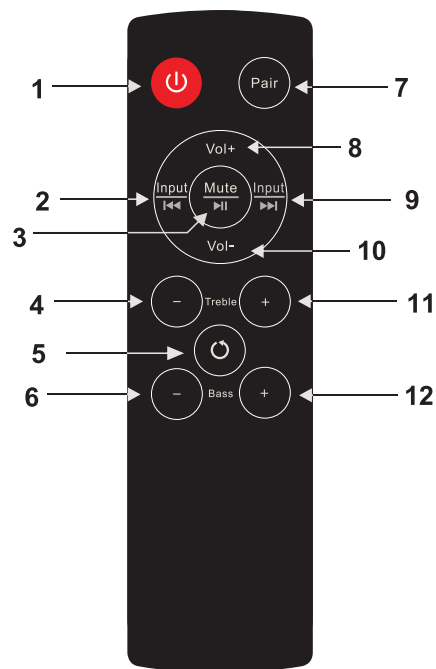
10 Ground Screw Terminal:

11 AC Input:

12 Left Speaker Output:

TAPS1L

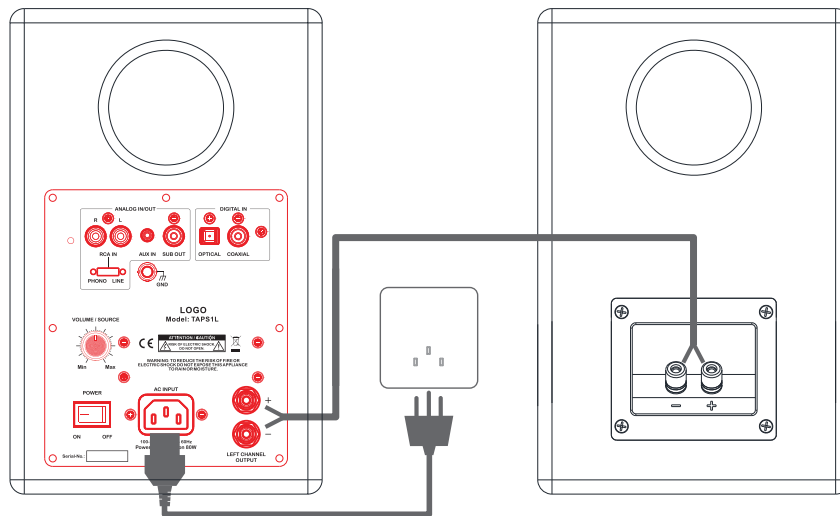
Remote control



- | | |
|---|--|
| 1. Standby | 8. Volume button
Press "+", then volume will increase; |
| 2. Input - (Short press) /
Previous (Long press) | 9. Input + (Short press) /
Next (Long press) |
| 3. Mute button - (Short press) /
Play/Pause (Long press) | 10. Volume button
Press "-", then volume will decrease; |
| 4. Treble - | 11. Treble + |
| 5. Reset
Reset the EQ | 12. Bass + |
| 6. Bass - | |
| 7. Pair: Bluetooth pair | |

TAPS1L

Connecting your speakers



STEP 1

Connect the RED (+) and BLACK (-) terminals from the left speaker to the corresponding terminals on the right speaker using the included speaker cable. Insulation on cable must be stripped on all ends.

Note: Because this system is self-powered, do not connect the speaker terminals to the speaker outputs of a stereo receiver.

STEP 2

Connect the power cord into the left speaker and the other end into the wall outlet.

TAPS1L

Connection via Bluetooth

Pairing your smartphone / mac / pc / mobile device with your TAPS1L: If you have a Bluetooth enabled audio device, such as smarthphone, music player, computer, tablet and you are connecting it with your TAPS1L for the first time, you should pair as follows:

- 1.Power on your TAPS1L and wait for 3 seconds.
- 2.Press “ Input + / Input - ” on remote control and switch to Bluetooth input mode. (You can also choose Bluetooth input mode by pressing the Input mode selector button on the rear panel of your TAPS1L). Once you have done so, the blue indicator will start flashing. If not, please check whether there is any other Bluetooth device connected with your TAPS1L and turn off such other Bluetooth device.
- 3.Press " Pair " onremote or press the knob on rear panel about 3 seconds.than,the blue indicator will flash quickly.
- 4.Select the Bluetooth function on your smartphone/mobile device and then search for new Bluetooth devices until the name “TAPS1L” appears on your screen. Select “TAPS1L” to pair with your smartphone/mobile device. If your smartphone/mobile device asks for a pairing code please enter “0000” or “1234”.
- 5.If pairing is successful and the TAPS1L is connected to your smartphone/ mobile device, the blue indicator will stay on and will stop flashing. Pairing is now complete.
- 6.Once paired all you have to do to pair again is to select the TAPS1L on your list of Bluetooth devices specified on your smartphone/mobile device and the TAPS1L will automatically connect to your smartphone/mobile device.

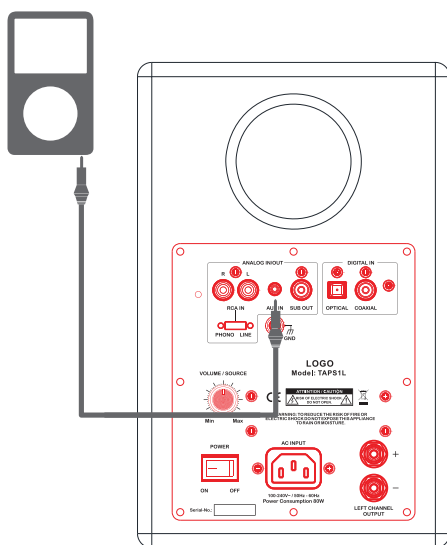
Operating Bluetooth function

- 1.Select the Bluetooth Input mode on your TAPS1L by pressing the “ Input + / Input - ” button on the remote control or by pressing “the input mode selector button” on the front panel of your TAPS1L.
- 2.If you have already paired your smartphone/mobile device to your TAPS1L, select the Bluetooth setting on your smartphone/mobile device and select “TAPS1L” which appears on your list of Bluetooth devices. Your TAPS1L will automatically connect to your smartphone/mobile device.
- 3.If your Bluetooth audio device supports the AVRCP agreement, you can use your remote control to select “PREV ⏮ /PLAY/PAUSE ⏸ /NEXT ⏭” on your smartphone/ mobile device.

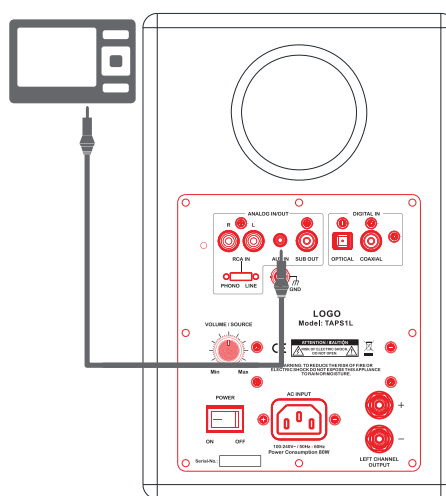
TAPS1L

Use with iPod/MP3 player

A



B



CONFIGURATION A(for use with iPod):

Connect the 3.5mm mini jack audio cable from iPod headphone jack to the AUDIO IN jack on the rear panel of TAPS1L.

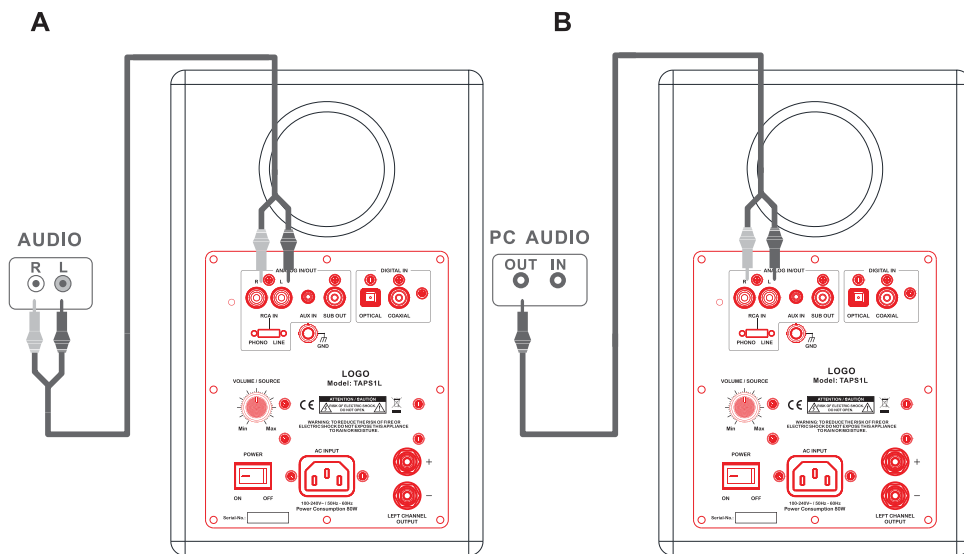
CONFIGURATION B(all products with 3.5mm mini jack outputs):

Connect the STEREO INPUT L/R from any audio source with RCA L/R audio outputs. Connect the 3.5mm mini jack audio cable from 3.5mini jack output to the AUDIO IN jack on the rear panel.

Attention: When connecting audio cables the power switch be tuned OFF. After connecting alle cables the power can be tuned ON and the system is now ready to use.

TAPS1L

Connect TV, DVD, console, PC



CONFIGURATION A(TV,DVD,CD-RCA stereo plugs):

Connect the RCA L/R to your TV,DVD etc.and the RCA L/R to the Stereo Input on rear panel of the TAPS1L.

Note that most newer TV remotes can control the TAPS1L active speaker volume if connected to variable TV audio out.

CONFIGURATION B(PC):

Connect the mini jack to your PC and the RCA L/R to the Stereo Input on rear panel of the TAPS1L.

TAPS1L

Limited Warranty

Dear Customer,

This product has been designed and manufactured to the highest quality standards, however if something goes wrong with this product, and the country distributor warrants free replacement parts or repair by the official distributor.

This limited warranty is valid for the original owner for a period of two years from the date of purchase, it is not transferable.

What is covered by the limited warranty :

The limited warranty covers all production and material defects of the product, except for the damages stated below.

What is not covered by the limited warranty :

Damages caused by packing and transport

Defects caused by accidents, misuse, normal wear and tear, mis-maintenance, voltage variation and overloading.

Damages caused by incorrect installation or operation
Damages caused by modification or repair by a nonauthorised service centre and use of non-original spare parts

Other damages due to conditions beyond the supplier's control such as fire, rain, stroke of lightning, war and other force majeure events

How to claim parts or repair under warranty :

To have your product serviced under warranty, you must contact the dealer from where you bought the product.

You will need to produce this warranty booklet completed and stamped by your dealer on the date of purchase. Alternatively, you will need the original sales invoice or other proof of ownership and date of purchase.

The supplier is liable only to repair or replace defective parts of products and the supplier is not responsible for indirect losses or damages arising from the use of the product.

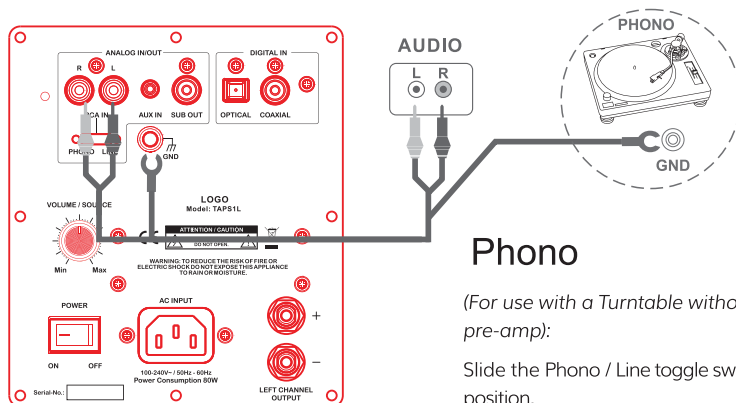
Transportation costs for servicing are not covered by the warranty.

A service repair or replacement cannot exceed the value of the product under warranty, in no event shall the supplier be responsible or liable for special, incidental, consequential or indirect damages.

Dealer name and stamp:

Date of purchase:

TAPS1L



Phono

(For use with a Turntable without built-in phono pre-amp):

Slide the Phono / Line toggle switch to the Phono position.

Connect the RCA L/R from your turntable to the RCA L/R Inputs on rear panel of the TAPS1L

Connect the Ground wire from the turntable to the GND on rear panel of the TAPS1L

Press RCA on the TAPS1L remote.

Specifications

Tweeter:	1 inch soft-dome
Woofer:	5inch Paper cone
Nominal impedance:	4 Ohm
Sensitivity 2.83V(1W/1M):	85dB
Power Output:	40W x 2
Frequency Response:	60Hz-20KHz
Crossover System:	2-way
Amplifier Type:	Class D
Inputs:	1 x RCA&Phono, 1 x 3.5mm stereo, 1x Optical, 1x Bluetooth
Outputs:	1xSub Woofer
Amplifier Input Sensitivity:	480mV(Line RCA)
Frequency Range:	20Hz-20KHZ @ +/- 3dB
THD (1W@1KHz):	<0.1%
Dimensions:	175mmx200mmx272mm
Net Weight / gross weight:	7.7Kg / 8.5Kg

FCC Statement

This equipment has been tested and found to comply with the limits for a Class B digital device, pursuant to Part 15 of the FCC Rules. These limits are designed to provide reasonable protection against harmful interference in a residential installation. This equipment generates uses and can radiate radio frequency energy and, if not installed and used in accordance with the instructions, may cause harmful interference to radio communications. However, there is no guarantee that interference will not occur in a particular installation. If this equipment does cause harmful interference to radio or television reception, which can be determined by turning the equipment off and on, the user is encouraged to try to correct the interference by one or more of the following measures:

- Reorient or relocate the receiving antenna.
- Increase the separation between the equipment and receiver.
- Connect the equipment into an outlet on a circuit different from that to which the receiver is connected.
- Consult the dealer or an experienced radio/TV technician for help.

This device complies with part 15 of the FCC Rules. Operation is subject to the following two conditions: (1) This device may not cause harmful interference, and (2) this device must accept any interference received, including interference that may cause undesired operation.

Changes or modifications not expressly approved by the party responsible for compliance could void the user's authority to operate the equipment.

This equipment complies with FCC radiation exposure limits set forth for an uncontrolled environment. This equipment should be installed and operated with minimum distance 20cm between the radiator & your body.

IC warning

This device complies with Industry Canada licence-exempt RSS standard(s).

Operation is subject to the following two conditions: (1) This device may not cause interference, and (2) This device must accept any interference, including interference that may cause undesired operation of the device.

Le présent appareil est conforme aux CNR d'Industrie Canada applicables aux appareils radio exempts de licence. L'exploitation est autorisée aux deux conditions suivantes:

- (1) l'appareil ne doit pas produire de brouillage, et
- (2) l'utilisateur de l'appareil doit accepter tout brouillage radioélectrique subi, même si le brouillage est susceptible d'en compromettre le fonctionnement .

changes or modifications not expressly approved by the party responsible for compliance could void the user's authority to operate the equipment.

This equipment complies with IC radiation exposure limits set forth for an uncontrolled environment.