

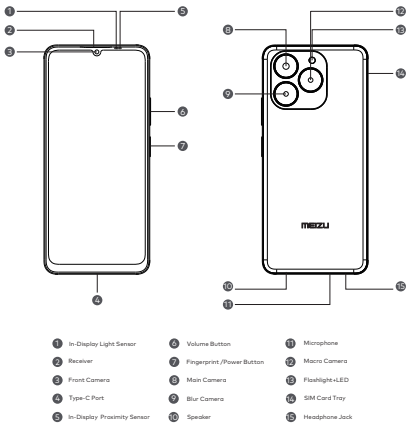
Quick start guide

M411H

This guide will introduce you to the mobile and its essential features.  
Please visit Meizu's official website for more information.

MEIZU

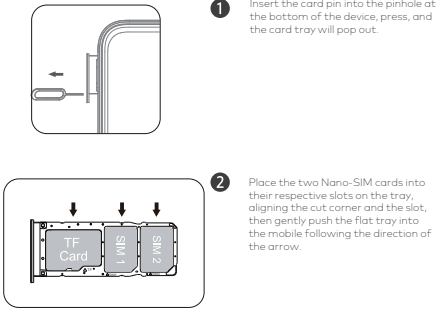
Mobile Appearance



Important Notifications

1. Power Button Instructions:
- After powering on, press and hold the power button for 0.5s to activate the Voice Assistant;
  - For initial startup, press and hold the power button for 5s. After powering on, press and hold the power button for 3s to access the power off/restart interface;
  - If the mobile phone is acting abnormally, please press and hold the power button continuously. This will force the phone to power off and then restart.
2. The rear cover and battery are non-removable. Please do not attempt to remove them yourself. If you need a replacement, please contact MEIZU after-sales service or your authorised local MEIZU representative.

SIM Card Installation (SIM card supports 2G/3G/4G)



- Switch between primary/accessory SIM cards in Settings when using dual SIM cards;
- Please use a standard Nano-SIM (contact your operator for a standard card). Cut or non-standard Nano-SIM cards may result in the device's malfunctioning;
- Damage to the device due to the use of non-standard Nano-SIM cards, incorrect installation, or incorrect SIM card tray installation will cause the warranty to become void.

Specifications

Product model		M411H
Main screen parameter		6.74"
Dimension		77.4mm*167.8mm*9.1mm
Battery		5850mAh/22.64Wh(Min) 6000mAh/23.22Wh(Typ)
Camera		50 Megapixels +2 Megapixels +0.8 Megapixels Rear 8 Megapixels Front
Operating temperature		0°C-35°C
SAR Values	CE SAR	0.751W/Kg(Head) 1.451W/Kg(Body)
	FCC SAR	1.06 W/Kg(Head) 0.99 W/Kg(Body)

Radio Waves Specifications

Radio	Frecuencia	Potencia de Salida Máxima
GSM	850MHz/900MHz	33.5 dBm
	1800MHz/1900MHz	30.5 dBm
WCDMA	Bandas 1/5/8	24.5 dBm
	Bandas 2/4	23.5 dBm
LTE FDD	Bandas 1/2/4/7/20/28/66	24.0 dBm
	Bandas 3/5/8/12/17/18/19/26	24.5 dBm
LTE TDD	Bandas 40	24.5 dBm
	Bandas 38/41	24.5 dBm
Bluetooth	2,400GHz-2,4835GHz	5dBm(EIRP)
WiFi 2.4G	2,400GHz-2,4835GHz	12dBm(EIRP)
Wifi 5G	5,150GHz-5,350GHz	11dBm(EIRP)
	5,470GHz-5,725GHz	11dBm(EIRP)
	5,725GHz-5,850GHz	11dBm(EIRP)