

Front



# Wireless Welcome Doorbell

Model:KS-SF20R-WLS10

SF20R (Receiver)

WLS10 (infrared curtain)

## Instructions



### FCC WARNING

This device complies with part 15 of the FCC Rules. Operation is subject to the following two conditions: (1) this device may not cause harmful interference, and (2) this device must accept any interference received, including interference that may cause undesired operation. Any changes or modifications not expressly approved by the party responsible for compliance could void the user's authority to operate the equipment. NOTE: This equipment has been tested and found to comply with the limits for a Class B digital device, pursuant to Part 15 of the FCC Rules. These limits are designed to provide reasonable protection against harmful interference in a residential installation. This equipment generates, uses and can radiate radio frequency energy and, if not installed and used in accordance with the instructions, may cause harmful interference to radio communications. However, there is no guarantee that interference will not occur in a particular installation. If this equipment does cause harmful interference to radio or television reception, which can be determined by turning the equipment off and on, the user is encouraged to try to correct the interference by one or more of the following measures: -- Reorient or relocate the receiving antenna. -- Increase the separation between the equipment and receiver. -- Connect the equipment into an outlet on a circuit different from that to which the receiver is connected. -- Consult the dealer or an experienced radio/TV technician for help. To maintain compliance with FCC's RF Exposure guidelines, this equipment should be installed and operated with minimum distance between 20cm the radiator your body: Use only the supplied antenna.



FCC ID: 2ANPS-KSSF20R



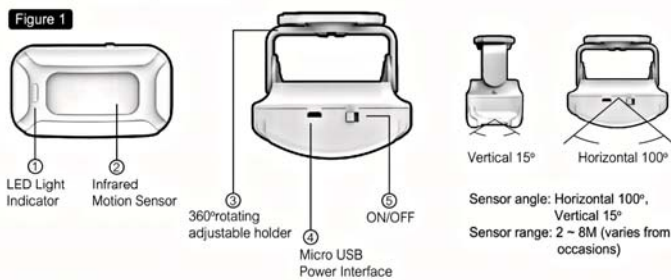
### Features

- Shop Keeper in day time, anti-theft in the night, welcome /doorbell /alarm / color lights/ lighting 5in1 multi-function.
- Remote transmission range up to 280M/918ft in the open space.
- 8 chord music chip, 40mm big horn,36 chime melodies, remember your last set melody and volume level once powered off.
- Colorful LED lights, adjustable brightness, distinguish multiple entrances by different colors.
- 4 stages adjustable volume (Loud/High/Middle/Low) from 113-25dB.
- Receiver can learn from up to 32 wireless sensors like PIR motion, magnetic or vibration sensor as well as up to 8 remote controllers.

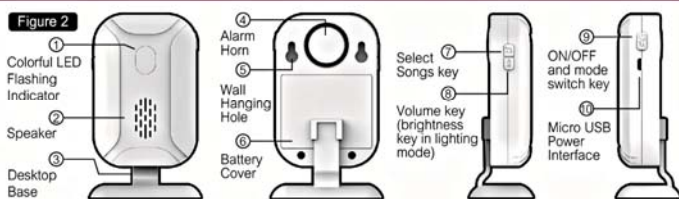
Application: shops, Commercial Complex, Luxury hotels, offices, factories, homes, villas, driveways, walking paths , Supermarkets ,restaurants etc.

## 1. Description of Structure

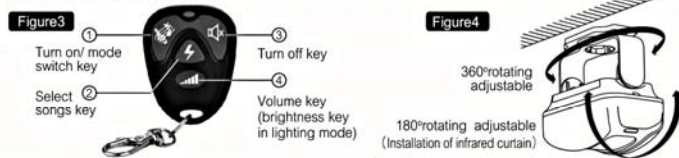
### 1.1 Infrared Curtain (Transmitter)



### 1.2 Receiver



### 1.3 Remote controller (optional)



Back

## 2. Function Description

### 2.1 Batteries and Power

- 2.1.1 3\*AAA alkaline batteries for PIR Transmitter, 3\* AA for Receiver, please note the negative and positive.
- 2.1.2 You will hear short "DU" and see LED colorful lights flashing after loading the batteries for receiver. Load the batteries, turn on the transmitter, the blue LED indicator will be on for 5 seconds.
- 2.1.3 Alkaline batteries are recommended, other types will shorten standby time and lower the alarm volume. Micro USB is alternative for power supply; battery supply will be automatically cut off if AC power, and can be standby power supply if power off.

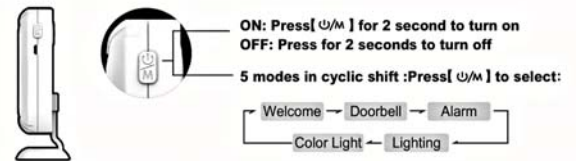
### 2.2 Installation

- 2.2.1 Install the transmitter in the ceiling or aisle of the entrance where customers and intruder go back and forth. Installation by screws will be more firm than double-sided tap which requires tidy and smooth surface.
  - \* The transmitter detects the infrared signal range released from the human temperature of 37℃, please take the 1.4(Figure 4) for installation adjustment reference.
  - \* The transmitter is used for indoor only; please do not keep it exposed to the sun and rain. Had better not install it in the areas of air-conditional, fan which change the environment temperature.
- 2.2.2 Place the receiver with the desktop base on the desk, or fix it on the wall with the screws.
- 2.2.3 After installation, press the receiver ON/OFF button to enter into welcome reminder mode, test the wireless transmission distance, adjust angle of the transmitter. Try to ensure that the people come in from different position can be detected by repeating tests.

### 2.3 Operational Description:

2.3.1 The transmitter and receiver have been programmed in factory.

Figure 5



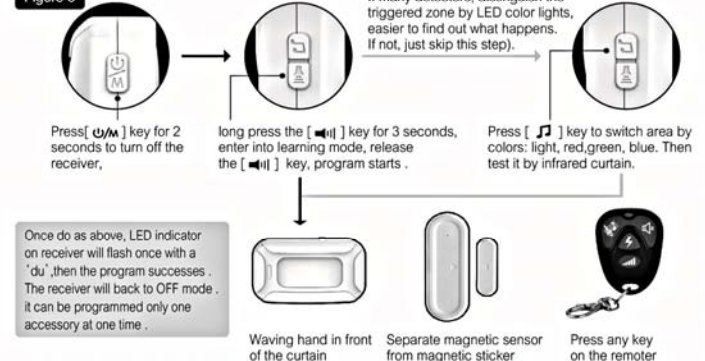
### 2.3.2 5 Modes with 5 functions :

|  | Welcome   | Doorbell                                 | Alarm   | Color light                    | Lighting                                  |
|--|---|--|---|--------------------------------|---|
| Model reminder                             | Play Welcome song, Color lights flashing  | Play current song, Color lights flashing | DiDiDi 3 times, Red light                       | No sound Color lights flashing | No sound, LED lights are on for 2 seconds |
| Sound effect if triggering the transmitter | "DingDong" +selected Welcome song   | Selected song                            | Alarm for 30 seconds; or super loud single tone | ---                            | ---                                       |
| Light effect if triggering transmitter     | LED lights colors vary depending on the programmed areas  |  |   |                                | white light will be on for 2 minutes      |
| [J] Selection songs key                    | Cyclic 5 welcome songs for option   | Cyclic 36 welcome songs alternative      | Option for 'Alarm' or 'super loud single tone'  | No function                    |   |
| [M] Volume key                             | 4 levels volume   |  |   | 4 levels brightness            |   |
| Instruction of remote control              | 4 buttons on remote control ,short press Turn-Off button to turn off the receiver   |  |   |                                |   |
| Disarm and mute interrupt function         | Disarm function: If in Alarm Mode, it will alarm for 30 seconds, press the receiver power button, or short press remote turn-off button to disarm or switch off. Mute interrupt function: when triggering the alarm in Doorbell Mode and Lighting Mode, it will play songs or LED lights will be lighting, short press any key (except turn-off button on remote control) can end the corresponding mode. |  |   |                                |   |

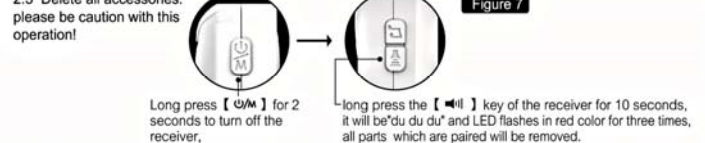
### 2.4 Program accessories (infrared curtain, magnet sensor, vibration sensor etc.) or remote control

If add vibration, infrared, magnetic detector, or remote control, do the program. Note: Each color can be programmed with 8 wireless sensors, in total 32 by 4 colors. There is no any relation between remote control and colors. Up to 8 remote control can be programmed, if over certain amount, the latter will cover the former.

Figure 6



### 2.5 Delete all accessories: please be caution with this operation!



## 3. Low Battery Indication

- 3.1 Infrared curtain: It is in low battery if LED flashes once every 3 seconds. Please replace the battery in time.
- 3.2 Receiver: If you hear the low battery indication sound when it is in application, please replace the battery in time, or all functions cannot be realized.
- 3.3 LED indicator gets darker or wireless range gets shorter, please replace the battery in time.

## 4. Parameters

- 4.1 Power Supply: 3\*AAA alkaline for PIR Transmitter or Micro USB 3\* AA for Receiver or Micro USB
- 4.2 Battery Lifespan: 5-7 months (based on 30 times per day)
- 4.3 Working Frequency: 433.92 MHz
- 4.4 Working Temperature: -10℃ ~ 60℃
- 4.5 Operating Humidity: < 80%
- 4.6 Storage Temperature: -20℃ ~ +70℃