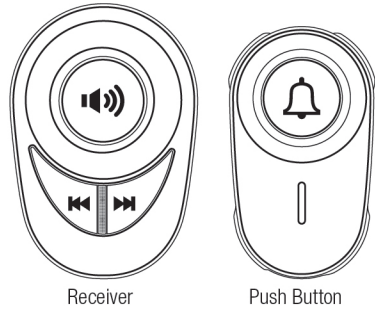


4202002502 V1.1

Long Range Wireless Doorbell

- * Waterproof
- * Long range
- * Low temperature resistance

KS-DB04
User Manual



Receiver Push Button
FCC ID: 2ANPS-KS-DB04
Note: Pictures for reference only, subject to our available products.

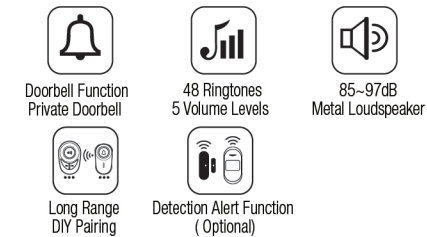
FCC Warning

This device complies with Part 15 of the FCC Rules. Operation is subject to the following two conditions:
(1) This device may not cause harmful interference, and (2) this device must accept any interference received, including interference that may cause undesired operation.

NOTE 1: This equipment has been tested and found to comply with the limits for a Class B digital device, pursuant to part 15 of the FCC Rules. These limits are designed to provide reasonable protection against harmful interference in a residential installation. This equipment generates uses and can radiate radio frequency energy and, if not installed and used in accordance with the instructions, may cause harmful interference to radio communications. However, there is no guarantee that interference will not occur in a particular installation. If this equipment does cause harmful interference to radio or television reception, which can be determined by turning the equipment off and on, the user is encouraged to try to correct the interference by one or more of the following measures:
- Reorient or relocate the receiving antenna.

- Increase the separation between the equipment and receiver.
- Connect the equipment into an outlet on a circuit different from that to which the receiver is connected.
- Consult the dealer or an experienced radio/TV technician for help.

NOTE 2: Any changes or modifications to this unit not expressly approved by the party responsible for compliance could void the user's authority to operate the equipment.

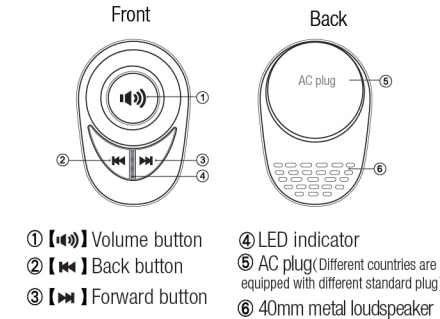


Product Feature

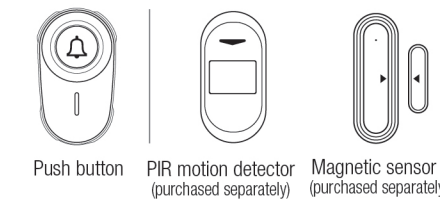
- Oval design, elegant and generous.
- Easy to select ringtone with the forward and back button.
- Loud and melodious ringtone is made over the metal loudspeaker
- Up to 3~5 years battery life (10 times per day).
- Light-weight push button, can be installed in the mounting bracket or be used as call button with a lanyard (lanyard is optional).
- Push button is waterproof, dustproof and low temperature resistant, suitable for outdoor use, no worry rain and snow weather.
- Advanced wireless technology, long transmission distance (measured city square 110 meters, river 400 meters), suitable for tall villas or heavy anti-theft doors.
- More features: power-off memory, private buttons, low power consumption, can add **PIR motion detectors /magnetic sensors**.
- Application: homes, villas, schools, companies, hospitals and other places, used as wireless doorbells or call reminders.

1. Physical Structure

1.1 Receiver



1.2 Transmitter



2. Installation and Use

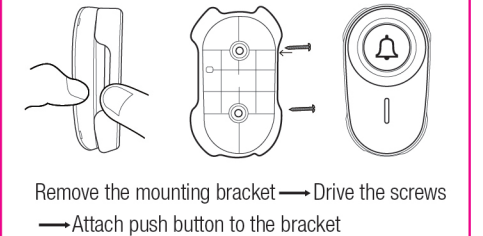
2.1 Installation

2.1.1 Placing push button around eye-level on either side of your door frame. Please choose a clean surface. If your door is a metal door, we recommended you to install the push button on the wall but not on the metal door.



2.1.2 Installation with self-adhesive tapes. Choose a clean and smooth surface, wipe the surface you are attaching the push button with a clean cloth before the installation. Take out the mounting bracket, attach the included self-adhesive tape on the back of push button, then attach push button to the selected surface. Press and hold for 30 seconds and then release to ensure cohesion.

2.1.3 Installation with screws.
Diagram of opening transmitter and installing screws:



2.1.4 Choose a socket of your home to install the receiver, then test and set. The factory default setting is the highest volume level.

反面

2.2 Function Setting

2.2.1 Press the [Back/Forward] forward/back button to select ringtone, it has 48 ringtones. Every time you press the [Back/Forward] forward/back button, the tune will change. Stop pressing the [Back/Forward] forward/back button when you hear the tune you want.

Tip: If you want to quickly back to the first tune, you could unplug the receiver, press and hold the [Forward] forward button then plug into the socket again, the receiver will make 'Di' sound and restore factory default settings.

2.2.2 Press [Volume] volume button to set the volume levels. Stop pressing the volume button when the volume you want. It has 5 volume levels: 4,3,2,1 and silent (only indicator light blinking).

2.3 Daily Use

2.3.1 Normal doorbell function: The receiver will ring the tune you selected if someone pressed the push button. (**Note:** indicator light blinking if you set it in silent mode)

2.3.2 Private doorbell function: The receiver will ring the tune you selected when pairing if someone pressed the push button. The tune will not changed by pressing the [Back/Forward] forward/back button.

2.3.3 Detection alert function: can add **PIR motion detectors/magnetic sensors** (package NOT included), the PIR motion detector/magnetic sensor triggered the receiver will light up and ring.

2.4 Pairing Method

One receiver and one transmitter set have been paired when we sent out. If you want to add more transmitters or receivers, please see the following pairing method.

Normal doorbell pairing method:

- 1.) Press and hold the [Volume] volume button about 3s until the receiver makes 'Du' sound and the LED lights on.
- 2.) Press the push button (or trigger **PIR motion detectors/magnetic sensors**), receiver makes 'Du' to prompt pairing is successful.

Private doorbell pairing method:

If there is a door for family members to enter and exit, you can set a private doorbell function and select "specific ringtone" to remind the owner. The pairing method as following:

- 1.) Press the [Back/Forward] forward/back button to select ringtone firstly.
- 2.) Press and hold the [Back/Forward] forward/back button about 3s until the receiver makes 'Du' sound and the LED lights on.
- 3.) Press the push button (or trigger **PIR motion detectors/magnetic sensors**), receiver makes 'Du' to prompt pairing is successful. **Note:** If you use this method, the tune will NOT changed by pressing the [Back/Forward] forward/back button.

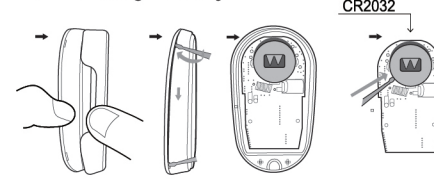
Tip: It supports up to 32 private doorbell settings corresponding to 32 sounds; it is recommended that select the alarm sound for the **PIR motion detectors /magnetic sensors** so it becomes a 2-in-1 function of doorbell and alarm.

Note: Only one transmitter can be paired at a time. If you need to pair more than one transmitters, please repeat the above pairing method. Each receiver can pair up to 32 transmitters. If you need one push button to pair with multiple receivers, please repeat the above pairing method to pair this one button with multiple receivers.

Delete all pairings:

Press and hold the [Volume] volume button about 10s until the receiver makes 'Du' sound and the LED stops blinking.

How to change battery:



- 1.) Remove the mounting bracket
- 2.) Pried at the gap with a small flat blade tool then slide up and down to open
- 3.) Push out the battery with flat blade tool then replace CR2032 battery (ensure the positive and negative polarity of the battery is correct)

Note:

1. Please replace the battery strictly in accordance with the model requirements in the manual to avoid the risk of explosion;
2. Please place the replaced battery in a safe area and away from children's reach to avoid burns and other risks caused by accidental ingestion.

3. Technical Parameters

- 3.1 Doorbell Volume: 85-97 dB
- 3.2 Working Frequency: 433.92±0.5MHz
Wireless Range: about 400 m in open space, about 110 m in city square, and about 20 to 80 m indoor with some obstacles.
- 3.3 AC Voltage of Receiver: 80V ~ 275V.
Receiver standby power consumption: 100 m W (about 0.8 KW.h a year)
- 3.4 Push Button Battery: CR2032
Batter Life: transmit 20,000 times, about 3~5 years battery life (10 times per day)
- 3.7 Working Environment Temperature:
Receiver: -20~70 C Push button: -40~70 C
- 3.6 Working Environment Humidity
Receiver: <90% RH Push button: <95% RH
- 3.7 Storage Temperature:
Receiver: -20~70 C Push button: -40~70 C

4. Note and Troubleshooting

4.1 Notes

4.1.1 Effectively prolong the product life by correctly using this product.

4.1.2. Non-professionals should not open and repair it, in order to avoid destroying precision electronic components.

4.2 Troubleshooting

Please follow the self-inspection below. If you can't solve the problem, please contact customer service for assistance:

4.2.1 Receiver does not ring:

1) Make sure the receiver plug in the socket well, and make sure the correct batteries (CR2032) is installed with the correct polarity;

2) Make sure the receiver is NOT in mute mode. Press the volume button to set the mute mode off;

3) Reconnect the doorbell. See "2.4 Pairing Method".

4.2.2 Range is reduced:

1) Metal structures can reduce the range. Don't mount the the receiver or push button on or near metal structures.

2) Water tank motor, router and computer with strong interference signals. Don't plug the receiver nearby them.

3) Radio passes through obstacles such as walls by diffraction and the transmission distance will be shortened. Please move the receiver closer to the push button.