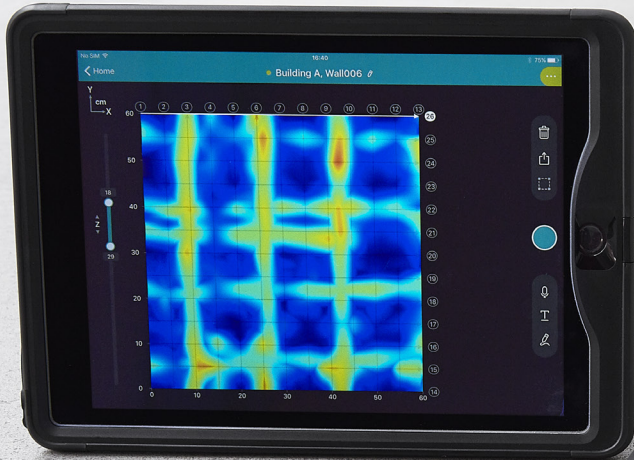


proceq



Proceq GPR Live

Quick Start Guide & Product Certificates

Kurzanleitung & Produktzertifikate

Guide de Prise en Main & Certificats de produits

Guida Breve & Certificati di prodotto

Guía de Inicio Rápido & Certificados del producto

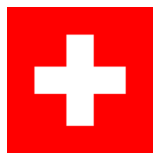
Guia de Início Rápido & Certificados do produto

Краткое руководство & Сертификаты продукта

クイックスタートガイド & 製品証明書

快速入门指南 & 产品证书

빠른 시작 안내서 & 제품 인증서



SWISS MADE



A



B



C



D



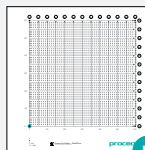
E



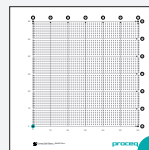
F



G



H



I



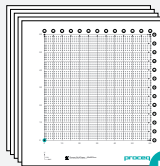
J



K



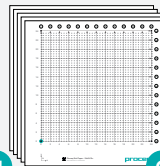
L



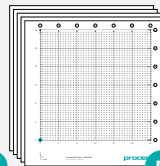
M



N



O



P

Scope of Delivery

Proceq GPR Live 393 10 x00

- A** Carrying case
- B** Proceq GPR Live probe
- C** Wrist loop
- D** Proceq Live Wi-Fi module
- E** Battery complete
- F** Power supply
- G** Chalk
- H** Proceq grid paper 60x60/5 cm
- I** Proceq grid paper 60x60/10 cm
- J** Quick start guide and product certificates

Optional Accessories

- K** Device tablet holder 393 40 100
- L** Telescopic rod with tablet holder 393 40 200

Proceq grid papers (set of 5)

- M** 60x60/5 cm 393 20 001S
- N** 60x60/10 cm 393 20 002S
- O** 24x24/2 inch 393 20 011S
- P** 24x24/4 inch 393 20 012S

Getting Started

Congratulations on your purchase of Proceq GPR Live. This instrument has been manufactured to highest Swiss quality standards. For complete instructions and safe handling information, watch the tutorials in the Proceq GPR Live app or visit www.proceq.com/downloads.

Step 1 Prepare the scan car



Insert the battery into the handle. Before first use, fully charge the battery using the power supply provided (2 hours). The LED is green when charging and switches off once finished. Orange LED

indicates that the battery is almost fully charged, but the temperature limit has been exceeded. Wait for the charging to continue or use the battery. Red LED indicates that the temperature limit has been exceeded (wait) or that the AA batteries have not been inserted correctly (unplug, check and re-connect).



Connect the Proceq Live Wi-Fi module to the right USB port on the back of the probe. Turn on the instrument by pushing the silver button. The instrument is now ready to be connected to the iOS device.

Step 2 Install the app



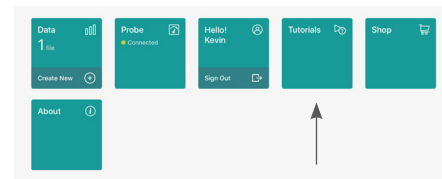
Install the Proceq GPR Live app from the App Store on your compatible iOS device. Create your account in the app or on live2.proceq.com.

Step 3 Probe verification and connection



Connect the iOS device to the internet and launch the Proceq GPR Live app. Sign in with your account and then tap on the "Probe" tile. On the "Device Information" screen, tap the "Scan" button to begin QR code recognition, and then follow the on-screen instructions. A "Successful Registration" message will appear. QR Code verification is only required once for initial set-up. Subsequently, proceed to the iOS Wi-Fi settings to connect to the Proceq GPR network. The app will inform you if new probe firmware becomes available. Perform the upgrade by tapping on the "Probe" tile when the probe is connected.

For detailed instructions on set-up, measuring and handling, watch the tutorial videos by tapping on the "Tutorials" tile on the app home screen.



Declaration of Conformity

Product: Proceq GPR Live
 Models: Basic / Pro / Unlimited
 Proceq Part Number: 393 10 x00
 Manufacturer: Proceq SA
 Address: Ringstrasse 2, 8603 Schwerzenbach,
 Switzerland

We confirm that the Proceq GPR Live instrument conforms with the following directives and standards:

Health: EN 62479:2010
 Safety standards: EN 61010-1:2010
 Laser classification: EN 60825-1:2014
 IP classification: IP 54
 Battery directive: 2006/66/EC
 Restriction of hazardous substances (RoHS): 2011/65/EC
 Radio equipment directive: 2014/53/EU (RED)
 Draft ETSI EN 301 489-1 v. 2.2.0
 Draft ETSI EN 301 489-33 v 2.2.0
 EN 61326-1:2013
 ETSI EN 302 066 v 2.1.1

Radio compatibility:

The conformity is based on all essential and specific radio test suites for that radio equipment category identified by the involved Notified Body. The notified body IMQ S.p.A. (identification number 0051) performed the EU-type examination in compliance with Annex III Module B of the 2014/53/EU Directive and issued the EU-type examination Certificate No. 0051-RED-0043.

This device complies with Part 15 of the FCC Rules and RSS-220 of IC. Operation is subject to the following two conditions: (1) this device may not cause harmful interference, and (2) this device must accept any interference received, including interference that may cause undesired operation. Changes or modifications not expressly approved by the party responsible for compliance could void the user's authority to operate the equipment.

Schwerzenbach, 31.08.2017



Patrick Waller
 Head of Supply Chain



FCC ID: 2ANPE-PQLIVE
 IC: xxxxx-PQLIVE

Swiss made Declaration

Product: Proceq GPR Live
 Models: Basic / Pro / Unlimited
 Proceq Part Number: 393 10 x00

We confirm that the Proceq GPR Live instrument was developed and manufactured in Switzerland and fulfills the requirements needed for the declaration "Made in Switzerland" or "Swiss Made."

The requirements for industrial products are in detail specified in the National Swiss Trademark Protection Statute (Art.47-50, MSchG) covering goods and services.



SWISS MADE

Schwerzenbach, 31.08.2017



Patrick Waller
 Head of Supply Chain

Proceq Europe

Ringstrasse 2
CH-8603 Schwerzenbach
Switzerland
Phone +41 43 355 38 00
Fax +41 43 355 38 12
info-europe@proceq.com

Proceq UK Ltd.

Bedford i-lab, Priory Business Park
Stannard Way
Bedford MK44 3RZ
United Kingdom
Phone +44 123 483 45 15
info-uk@proceq.com

Proceq USA, Inc.

117 Corporation Drive
Aliquippa, PA 15001
U.S.A.
Phone +1 724 512 03 30
Fax +1 724 512 03 31
info-usa@proceq.com

Proceq Asia Pte Ltd

1 Fusionopolis Way
#20-02 Connexis South Tower
Singapore 138632
Phone +65 638 239 66
Fax +65 638 233 07
info-asia@proceq.com

Proceq Rus LLC

Ul. Optikov 4
korp. 2, lit. A, Office 410
197374 St. Petersburg
Russia
Phone +7 812 448 35 00
Fax +7 812 448 35 89
info-russia@proceq.com

Proceq Middle East

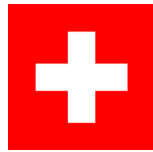
P. O. Box 8365, SAIF Zone,
Sharjah, United Arab Emirates
Phone +971 6 557 8505
Fax +971 6 557 8606
info-middleeast@proceq.com

Proceq SAO Ltd.

Rua Paes Leme, 136, cj 610
Pinheiros, São Paulo
Brasil Cep. 05424-010
Phone +55 11 3083 38 89
info-southamerica@proceq.com

Proceq China

Unit B, 19th Floor
Five Continent International Mansion, No. 807
Zhao Jia Bang Road
Shanghai 200032
Phone +86 21 631 774 79
Fax +86 21 631 750 15
info-china@proceq.com



SWISS MADE

proceq